



འབྲུག་གྲོག་མེ་ལམ་འཛིན།

Bhutan Power Corporation Ltd.
Bhutan Power System Operator
Thimphu: Bhutan



Message No.: Enter your message number
From: Shift In-charge, Control Room

Date: 14-Jun-19
Time: 11:13

To
Chief Executive Officer, BPC. Email: stobjey@bpc.bt
Director, O&MD, DGPC. Email: director.umd@drukgreen.com
General Manager, TD, BPC. Email: ktobgye@bpc.bt
General Manager, DCSD, BPC. Email: sandeeprai@bpc.bt

Sub: **Load Generation Balance Report of Yesterday (13-Jun-2019).**

Hours (BST)	Forecast		Actual		Hours (BST)	Forecast		Actual	
	Generation	Load	Generation	Load		Generation	Load	Generation	Load
0:00	675.20	248.60	673.88	245.09	12:00	675.20	257.80	648.75	273.91
0:15	675.20	251.50	675.66	248.14	12:15	675.20	255.80	687.36	284.77
0:30	675.20	258.10	673.28	253.44	12:30	675.20	278.30	686.78	286.48
0:45	675.20	256.30	674.61	263.66	12:45	675.20	276.10	686.91	281.80
1:00	675.20	251.00	674.17	262.01	13:00	675.20	277.30	685.16	280.66
1:15	675.20	257.20	675.17	242.94	13:15	675.20	253.60	722.55	274.05
1:30	675.20	256.60	671.86	253.29	13:30	675.20	252.60	720.63	273.07
1:45	675.20	255.70	669.06	253.81	13:45	675.20	256.50	718.55	274.57
2:00	675.20	267.90	664.66	261.72	14:00	675.20	248.20	720.97	262.91
2:15	675.20	258.90	671.58	258.99	14:15	675.20	248.60	707.38	266.34
2:30	675.20	260.90	671.50	256.90	14:30	675.20	250.40	706.09	260.83
2:45	675.20	259.10	671.17	255.86	14:45	675.20	251.80	703.52	257.55
3:00	675.20	258.70	671.66	256.99	15:00	675.20	250.40	706.00	256.51
3:15	675.20	269.30	671.91	257.22	15:15	675.20	251.00	704.66	260.35
3:30	675.20	270.10	670.63	254.95	15:30	675.20	257.90	703.89	259.80
3:45	675.20	262.00	669.58	254.11	15:45	675.20	255.20	704.83	263.88
4:00	675.20	260.80	668.44	256.71	16:00	675.20	253.60	706.33	264.63
4:15	675.20	267.20	672.80	258.55	16:15	675.20	252.10	711.72	257.14
4:30	675.20	269.20	632.20	260.56	16:30	675.20	261.60	705.14	245.14
4:45	675.20	269.30	633.98	264.64	16:45	675.20	260.00	708.11	243.46
5:00	675.20	272.00	633.42	267.56	17:00	675.20	260.70	712.56	252.77
5:15	675.20	271.40	631.31	273.08	17:15	675.20	265.60	711.72	249.23
5:30	675.20	279.10	632.80	272.77	17:30	675.20	270.80	719.23	239.30
5:45	675.20	284.50	635.00	294.77	17:45	675.20	274.80	716.64	239.18
6:00	675.20	290.60	634.03	295.55	18:00	675.20	284.50	715.23	254.55
6:15	675.20	295.30	634.16	301.09	18:15	675.20	291.80	743.06	275.14
6:30	675.20	298.90	633.31	289.15	18:30	675.20	293.80	742.73	271.46
6:45	675.20	297.00	631.47	298.91	18:45	675.20	288.70	742.59	284.07
7:00	675.20	296.40	628.09	296.19	19:00	675.20	288.30	741.19	283.98
7:15	675.20	292.80	630.92	286.58	19:15	675.20	284.60	781.41	298.40
7:30	675.20	282.90	632.33	277.77	19:30	675.20	279.00	740.36	309.30
7:45	675.20	283.00	632.19	273.01	19:45	675.20	277.20	741.34	302.16
8:00	675.20	277.20	630.75	270.52	20:00	675.20	276.50	741.78	305.02
8:15	675.20	275.40	630.69	271.19	20:15	675.20	275.80	741.50	300.52
8:30	675.20	267.70	627.00	261.42	20:30	675.20	275.00	740.19	305.07
8:45	675.20	263.90	633.09	267.03	20:45	675.20	270.90	741.02	305.95
9:00	675.20	264.60	635.14	263.40	21:00	675.20	267.10	739.78	301.66
9:15	675.20	265.30	638.28	259.37	21:15	675.20	259.90	739.91	289.48
9:30	675.20	264.40	639.17	258.13	21:30	675.20	263.10	796.91	289.21
9:45	675.20	257.40	640.94	260.26	21:45	675.20	262.60	740.28	283.40
10:00	675.20	257.40	639.83	263.79	22:00	675.20	262.40	738.91	281.46
10:15	675.20	251.90	642.80	267.99	22:15	675.20	257.90	724.39	276.60
10:30	675.20	256.80	643.66	266.16	22:30	675.20	264.50	697.58	272.97
10:45	675.20	255.00	643.25	273.42	22:45	675.20	254.50	694.92	263.23
11:00	675.20	250.40	642.31	267.55	23:00	675.20	253.60	694.41	265.24
11:15	675.20	258.40	646.03	259.34	23:15	675.20	249.20	655.45	269.88
11:30	675.20	254.20	646.02	269.84	23:30	675.20	252.30	656.66	248.31
11:45	675.20	257.30	649.56	268.50	23:45	675.20	249.40	656.00	261.12

Yours faithfully
Karma Choden

Coincidental peak load of Day(Last year):	
293.06 MW	13-Jun-18
Maximum Load till date:	
399.35	27-Dec-18



འབྲུག་གྲོག་མེ་ལས་འཛིན།

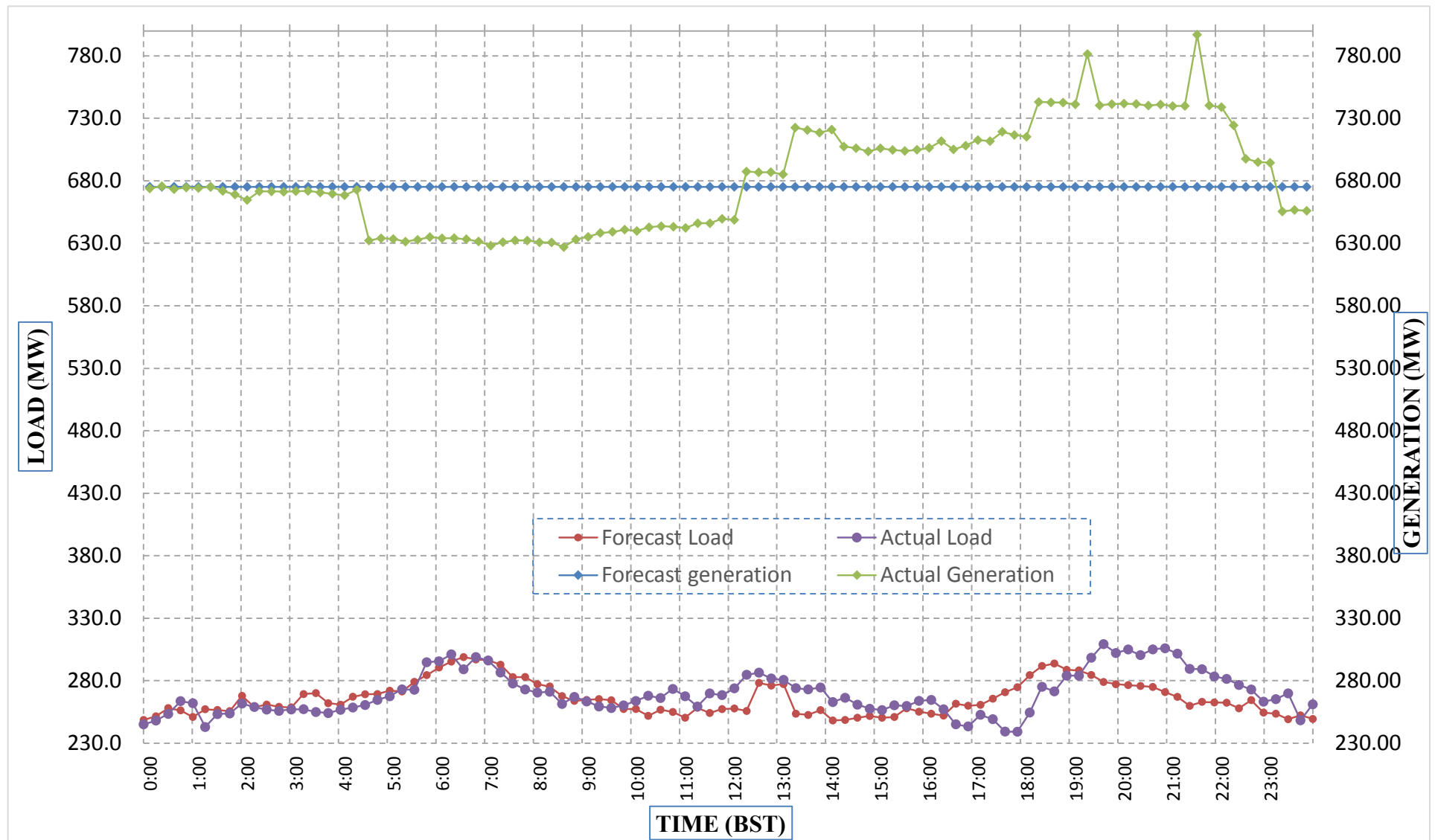
Bhutan Power Corporation Ltd.
 Bhutan Power System Operator
 Thimphu: Bhutan



Message No.: Enter your message number
 From: Shift In-charge, Control Room

Date: 14-Jun-19
 Time: 11:13

Forecast Generation & Load with Actual Generation & Load (13-Jun-2019).



Yours faithfully,
 Karma Choden

	MW	Coincidental peak load of Day(Last year):	
Peak Co-incident Generation(13-Jun-2019).	796.91	293.06 MW	13-Jun-18
Peak Co-incident Load(13-Jun-2019).	309.30	Maximum Load till date:	
		399.35	27-Dec-18

Telephone: +975-02335631; Fax: +975-02335632; Email: bhutansystemoperator@bpc.bt; www.bpc.bt



ཕྱག་ལུགས་ལྷན་ཁུངས་ལྷན་ཁུངས་།

Bhutan Power Corporation Ltd.
Bhutan Power System Operator
Thimphu: Bhutan



Message No.: Enter your message number
From: Shift In-charge, Control Room

Date: 14-Jun-19
Time: 11:13

To
Chief Executive Officer, BPC. Email: stobjey@bpc.bt
Director, O&MD, DGPC. Email: director.umd@drukgreen.com
General Manager, TD, BPC. Email: ktobgye@bpc.bt
General Manager, DCSD, BPC. Email: sandeeprai@bpc.bt

Sub: Load Generation Balance Report of Today (14-Jun-2019).

Hours (BST)	Forecast		Actual	
	Generation	Load	Generation	Load
0:00	707.90	250.30	658.38	260.02
0:15	707.90	253.30	658.31	257.09
0:30	707.90	258.80	659.11	256.27
0:45	707.90	256.70	658.31	251.26
1:00	707.90	251.60	660.88	250.57
1:15	707.90	257.80	653.36	256.37
1:30	707.90	257.00	652.98	253.68
1:45	707.90	255.70	650.80	243.69
2:00	707.90	267.80	650.58	258.70
2:15	707.90	259.40	637.41	255.26
2:30	707.90	261.40	634.66	256.36
2:45	707.90	259.30	634.44	262.37
3:00	707.90	259.50	635.16	251.57
3:15	707.90	270.00	594.88	252.86
3:30	707.90	271.00	596.05	255.04
3:45	707.90	262.10	597.25	255.81
4:00	707.90	261.60	598.23	253.21
4:15	707.90	269.10	600.22	247.64
4:30	707.90	271.20	598.91	259.47
4:45	707.90	271.20	597.94	252.16
5:00	707.90	274.20	598.25	263.59
5:15	707.90	273.40	559.72	271.51
5:30	707.90	280.50	559.69	284.50
5:45	707.90	285.90	560.78	290.57
6:00	707.90	292.50	560.13	296.06
6:15	707.90	297.30	560.73	301.63
6:30	707.90	300.30	561.48	309.12
6:45	707.90	298.40	559.63	297.79
7:00	707.90	297.50	558.77	294.98
7:15	707.90	293.90	561.23	284.23
7:30	707.90	284.60	566.13	277.28
7:45	707.90	284.50	584.28	276.27
8:00	707.90	278.50	585.39	277.42
8:15	707.90	277.40	583.50	278.22
8:30	707.90	269.70	585.03	276.93
8:45	707.90	264.80	586.67	268.39
9:00	707.90	265.60	586.08	269.40

Coincidental peak load of Day(Last year):	
283.02 MW	14-Jun-18

299.75	
399.35	27-Dec-18

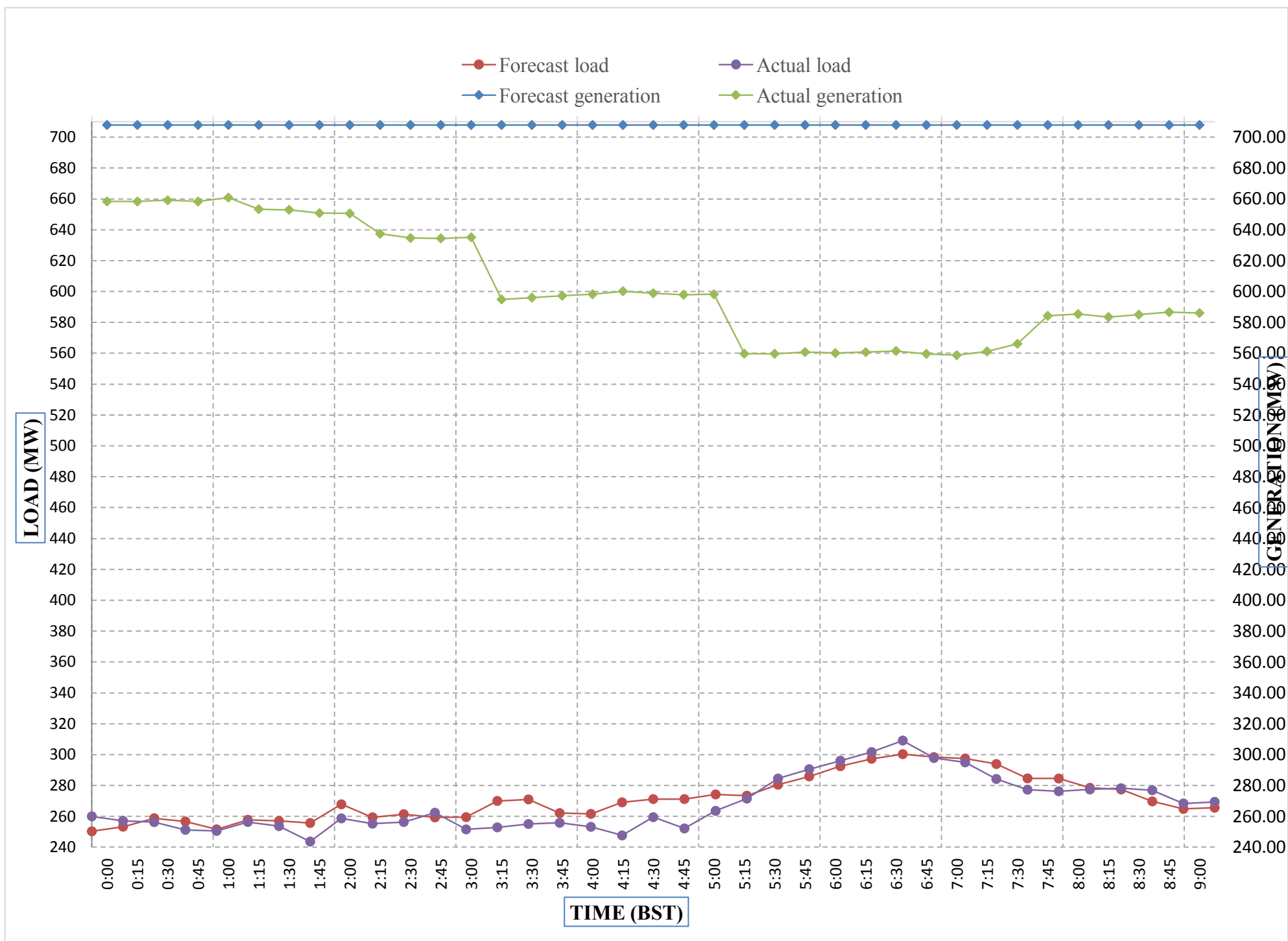
Yours faithfully,
Karma Choden



Message No.: Enter your message number
From: Shift In-charge, Control Room

14-Jun-19
11:13

Forecast Generation & Load with Actual Generation & Load of Today from 00:00hrs to 09:00hrs(14-Jun-2019).



Yours faithfully
 Karma Choden

Coincidental peak load of Day(Last year):	
283.02 MW	14-Jun-18

Maximum Load till date:	
399.35	27-Dec-18



འབྲུག་གྲོག་ལེ་ལས་འཛིན།
Bhutan Power Corporation Ltd.
Bhutan Power System Operator
 Thimphu: Bhutan



Message No.: Enter your message number **Date:** 14-Jun-19
From: Shift In-charge, Control Room **Time:** 11:13

To
 Chief Executive Officer, BPC. Email: stobjey@bpc.bt
 Director, O&MD, DGPC. Email: director.umd@drukgreen.com
 General Manager, TD, BPC. Email: ktobgye@bpc.bt
 General Manager, DCSD, BPC. Email: sandeeprai@bpc.bt

Sub: Load Generation Balance Report of Tomorrow (15-Jun-2019).

Hours (BST)	Forecast		Hours (BST)	Forecast	
	Generation	Load		Generation	Load
0:00	570.00	248.90	12:00	570	257.90
0:15	570.00	251.80	12:15	570	256.20
0:30	570.00	257.20	12:30	570	278.40
0:45	570.00	254.50	12:45	570	275.70
1:00	570.00	250.10	13:00	570	276.90
1:15	570.00	255.40	13:15	570	253.20
1:30	570.00	255.00	13:30	570	251.90
1:45	570.00	253.60	13:45	570	256.30
2:00	570.00	265.50	14:00	570	247.30
2:15	570.00	256.50	14:15	570	248.10
2:30	570.00	257.60	14:30	570	250.20
2:45	570.00	255.70	14:45	570	251.60
3:00	570.00	257.30	15:00	570	251.70
3:15	570.00	266.80	15:15	570	250.80
3:30	570.00	267.00	15:30	570	257.80
3:45	570.00	259.70	15:45	570	256.10
4:00	570.00	257.50	16:00	570	254.30
4:15	570.00	265.00	16:15	570	254.40
4:30	570.00	266.90	16:30	570	259.00
4:45	570.00	267.80	16:45	570	262.30
5:00	570.00	272.20	17:00	570	263.10
5:15	570.00	271.90	17:15	570	267.40
5:30	570.00	279.10	17:30	570	269.20
6:45	570.00	283.10	17:45	570	275.40
6:00	570.00	291.00	18:00	570	283.00
6:15	570.00	296.20	18:15	682.2	290.50
6:30	570.00	299.40	18:30	682.2	292.60
6:45	570.00	296.30	18:45	682.2	286.20
7:00	570.00	297.90	19:00	682.2	285.70
7:15	570.00	294.20	19:15	682.2	281.00
7:30	570.00	284.40	19:30	682.2	277.00
7:45	570.00	284.70	19:45	682.2	275.40
8:00	570.00	278.40	20:00	682.2	274.50
8:15	570.00	276.10	20:15	682.2	273.80
8:30	570.00	267.40	20:30	682.2	273.40
8:45	570.00	263.60	20:45	682.2	270.30
9:00	570.00	264.50	21:00	682.2	260.70
9:15	570.00	265.20	21:15	682.2	254.50
9:30	570.00	264.40	21:30	682.2	257.50
9:45	570.00	260.80	21:45	682.2	256.70
10:00	570.00	259.10	22:00	682.2	257.80
10:15	570.00	250.70	22:15	682.2	254.60
10:30	570.00	256.40	22:30	682.2	261.80
10:45	570.00	255.60	22:45	682.2	250.60
11:00	570.00	250.90	23:00	640.3	250.50
11:15	570.00	258.20	23:15	570	244.80
11:30	570.00	253.80	23:30	570	249.50
11:45	570.00	257.60	23:45	570	246.20

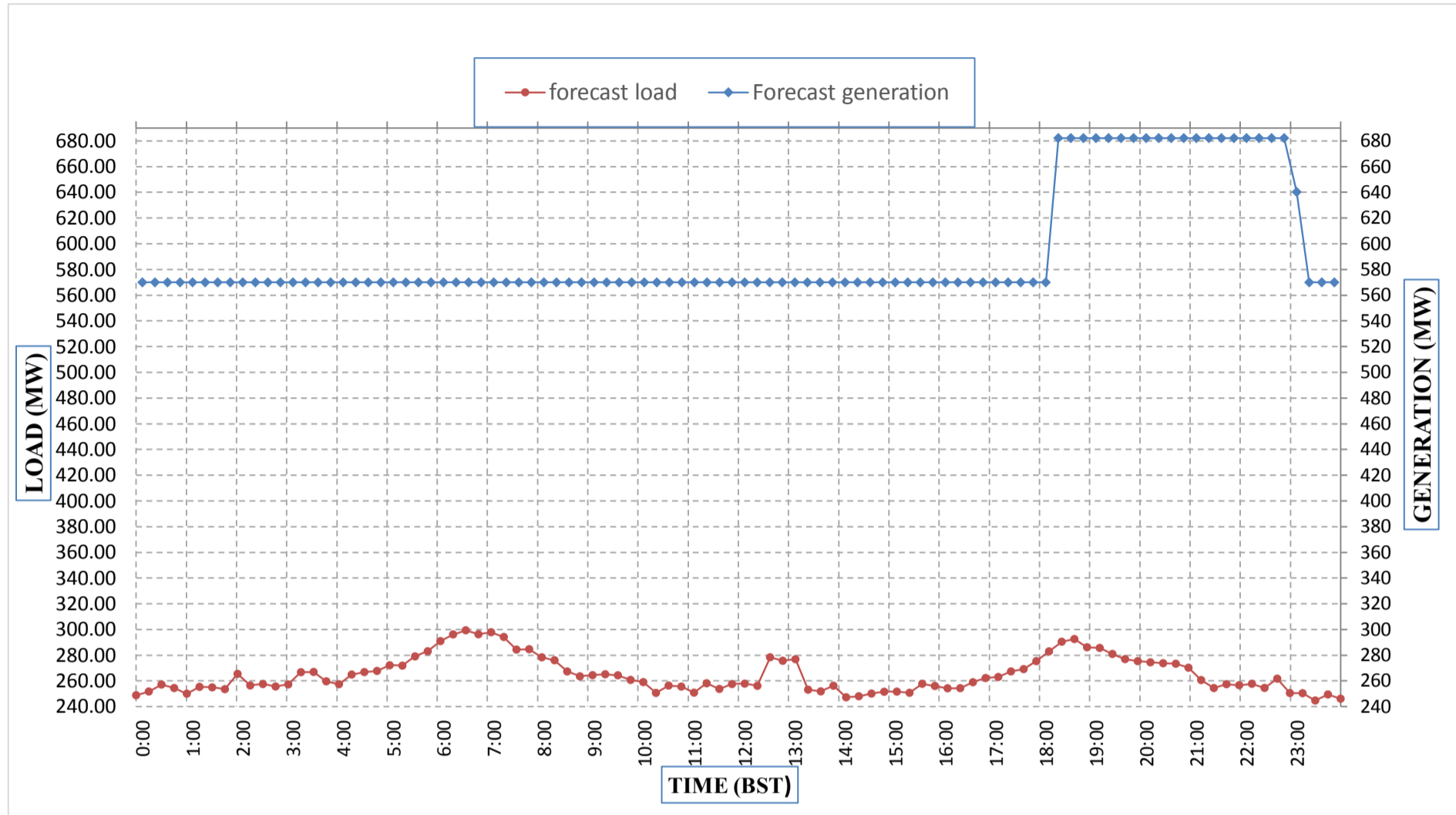
Yours faithfully,
 Karma Choden



Message No.: Enter your message number
From: Shift In-charge, Control Room

Date: 14-Jun-19
Time: 11:13

Forecast Generation & Load Forecast for Tomorrow (15-Jun-2019).



Yours faithfully,
 Karma Choden

	MW
Scheduled Peak Generation(15-Jun-2019).	682.20
Forecast Peak Load(15-Jun-2019).	299.40



འབྲུག་རྒྱལ་ཁོག་གི་འགན་ཁུར་ལྷན་ཁག་།

Bhutan Power Corporation Ltd.
Bhutan Power System Operator
Thimphu: Bhutan



Message No.: Enter your message number
From: Shift In-charge, Control Room

Date: 14-Jun-19
Time: 11:13

To
Chief Executive Officer, BPC. Email: stobjey@bpc.bt
Director, O&MD, DGPC. Email: director.umd@drukgreen.com
General Manager, TD, BPC. Email: ktobje@bpc.bt
General Manager, DCSD, BPC. Email: sandeeprai@bpc.bt

Sub: Forecast Generation and Actual Generation of Dagachhu (13-Jun-2019).

Hours (BST)	Actual Frequency	Forecast Generation	Actual Generation	Hours (BST)	Actual Frequency	Forecast Generation	Actual Generation
0:00		30.00	18.68	12:00		30.00	21.43
0:15		30.00	18.67	12:15		30.00	21.45
0:30		30.00	19.45	12:30		30.00	21.43
0:45		30.00	19.45	12:45		30.00	21.43
1:00		30.00	20.02	13:00		30.00	21.43
1:15		30.00	19.99	13:15		30.00	21.42
1:30		30.00	20.54	13:30		30.00	21.42
1:45		30.00	20.54	13:45		30.00	21.42
2:00		30.00	20.55	14:00		30.00	21.43
2:15		30.00	20.54	14:15		30.00	21.44
2:30		30.00	20.55	14:30		30.00	20.83
2:45		30.00	20.54	14:45		30.00	20.00
3:00		30.00	21.06	15:00		30.00	19.99
3:15		30.00	21.05	15:15		30.00	20.00
3:30		30.00	20.78	15:30		30.00	18.74
3:45		30.00	20.79	15:45		30.00	18.71
4:00		30.00	20.24	16:00		30.00	18.71
4:15		30.00	20.25	16:15		30.00	18.73
4:30		30.00	18.72	16:30		30.00	18.73
4:45		30.00	20.52	16:45		30.00	18.72
5:00		30.00	20.53	17:00		30.00	18.73
5:15		30.00	20.53	17:15		30.00	18.73
5:30		30.00	20.53	17:30		30.00	24.15
6:45		30.00	23.66	17:45		30.00	21.45
6:00		30.00	23.67	18:00		30.00	21.42
6:15		30.00	23.10	18:15		30.00	21.44
6:30		30.00	23.09	18:30		30.00	21.44
6:45		30.00	23.08	18:45		30.00	21.43
7:00		30.00	22.26	19:00		30.00	21.43
7:15		30.00	22.27	19:15		30.00	20.05
7:30		30.00	22.79	19:30		30.00	21.34
7:45		30.00	22.79	19:45		30.00	21.26
8:00		30.00	22.80	20:00		30.00	20.07
8:15		30.00	22.81	20:15		30.00	20.03
8:30		30.00	22.80	20:30		30.00	20.02
8:45		30.00	22.80	20:45		30.00	20.00
9:00		30.00	22.82	21:00		30.00	20.01
9:15		30.00	22.81	21:15		30.00	20.02
9:30		30.00	22.80	21:30		30.00	20.02
9:45		30.00	22.82	21:45		30.00	20.00
10:00		30.00	22.81	22:00		30.00	20.01
10:15		30.00	22.80	22:15		30.00	20.01
10:30		30.00	22.83	22:30		30.00	19.23
10:45		30.00	22.81	22:45		30.00	19.23
11:00		30.00	22.81	23:00		30.00	19.22
11:15		30.00	21.42	23:15		30.00	19.22
11:30		30.00	21.42	23:30		30.00	19.23
11:45		30.00	21.44	23:45		30.00	19.21

Note: DHP frequency not available from site(system crashed)

Yours faithfully,

Karma Choden

#



འབྲུག་གྲོག་མེ་ལས་འཛིན།

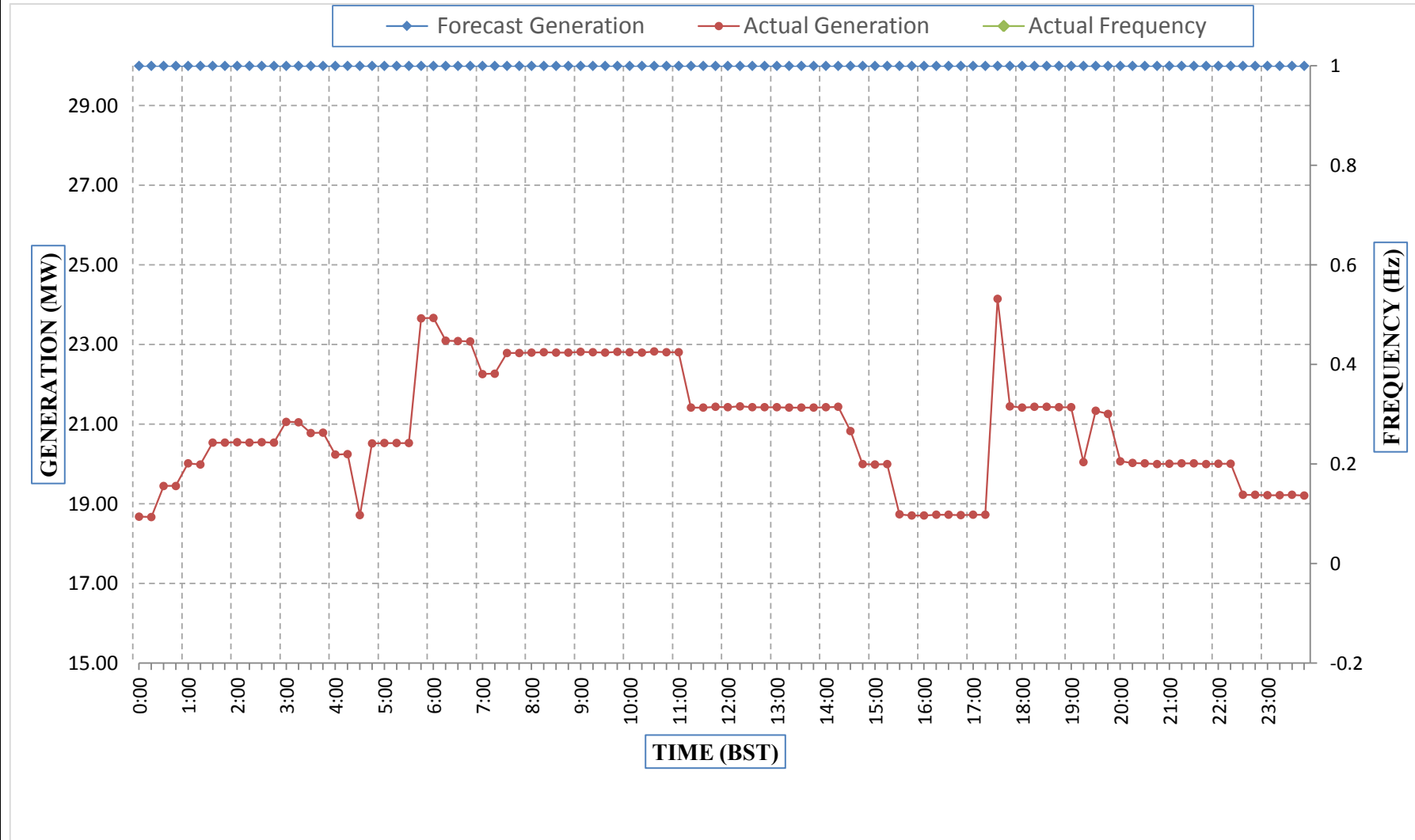
Bhutan Power Corporation Ltd.
Bhutan Power System Operator
Thimphu: Bhutan



Message No.: Enter your message number
From: Shift In-charge, Control Room

Date: 14-Jun-19
Time: 11:13

Forecast Generation & Actual Generation of Dagachhu(13-Jun-2019).



Yours faithfully,
Karma Choden