



འབྲུག་གྲོག་མེ་ལམ་འཛིན།

Bhutan Power Corporation Ltd.  
Bhutan Power System Operator  
Thimphu: Bhutan



Message No.: Enter your message number  
From: Shift In-charge, Control Room

Date: 8-Feb-19  
Time: 11:38

To  
Managing Director, BPC. Email: gemtshering@bpc.bt  
Director, O&MD, DGPC. Email: director.umd@drukgreen.com  
General Manager, TD, BPC. Email: ktobgye@bpc.bt  
General Manager, DCSD, BPC. Email: sandeeprai@bpc.bt

Sub: **Load Generation Balance Report of Yesterday (07-Feb-2019).**

Hours (BST)	Forecast		Actual		Hours (BST)	Forecast		Actual	
	Generation	Load	Generation	Load		Generation	Load	Generation	Load
0:00	218.80	264.00	243.92	254.98	12:00	218.8	276.20	271.65	281.60
0:15	218.80	267.00	244.73	252.65	12:15	218.8	274.10	269.68	274.82
0:30	218.80	272.80	244.35	249.13	12:30	218.8	277.70	270.23	273.50
0:45	218.80	270.30	238.60	249.11	12:45	218.8	275.60	271.45	267.34
1:00	218.80	265.40	240.22	245.68	13:00	218.8	276.20	271.42	265.68
1:15	218.80	270.90	243.04	248.51	13:15	218.8	269.70	241.38	262.13
1:30	218.80	268.90	244.74	248.66	13:30	218.8	268.00	240.70	263.48
1:45	218.80	267.70	245.69	244.35	13:45	218.8	271.60	238.39	260.21
2:00	218.80	279.90	245.94	248.84	14:00	218.8	263.80	239.03	257.13
2:15	218.80	271.20	245.06	246.70	14:15	218.8	264.80	239.97	254.81
2:30	218.80	273.00	243.79	245.94	14:30	218.8	266.20	241.16	246.88
2:45	218.80	270.30	242.99	245.77	14:45	218.8	266.90	241.97	240.42
3:00	218.80	272.70	243.89	246.10	15:00	218.8	265.50	240.67	243.68
3:15	218.80	283.50	244.33	241.95	15:15	218.8	265.60	230.12	240.19
3:30	218.80	283.50	245.67	244.13	15:30	218.8	273.10	230.00	244.20
3:45	218.80	275.80	244.38	247.27	15:45	218.8	270.80	230.03	240.24
4:00	218.80	275.80	245.15	242.98	16:00	218.8	269.90	285.09	186.69
4:15	218.80	282.70	245.00	245.41	16:15	218.8	269.40	231.95	235.45
4:30	218.80	284.60	243.79	239.02	16:30	218.8	279.20	231.73	242.86
4:45	218.80	284.60	244.93	240.98	16:45	218.6	279.70	231.13	245.22
5:00	218.80	288.60	244.63	239.24	17:00	268.8	282.50	231.64	243.27
5:15	218.80	287.60	241.74	235.42	17:15	268.8	290.20	231.02	259.45
5:30	218.80	296.90	234.72	236.83	17:30	268.8	293.10	230.84	273.36
5:45	218.80	302.40	234.05	244.80	17:45	268.8	303.60	230.55	270.41
6:00	218.80	309.20	234.44	250.68	18:00	303.8	317.20	237.78	282.88
6:15	218.80	316.30	233.17	254.84	18:15	303.8	327.20	296.88	310.17
6:30	218.80	322.00	232.50	262.80	18:30	303.8	332.60	306.74	315.05
6:45	218.80	321.20	232.32	276.84	18:45	303.8	326.80	311.48	319.71
7:00	218.80	322.10	232.09	289.16	19:00	303.8	324.30	308.84	323.64
7:15	218.80	319.80	252.98	284.50	19:15	303.8	319.80	310.00	325.07
7:30	218.80	312.10	252.57	293.62	19:30	303.8	312.60	309.34	319.49
7:45	218.80	311.60	269.88	295.38	19:45	303.8	308.80	310.38	319.54
8:00	218.80	305.00	269.89	284.20	20:00	303.8	306.20	311.88	318.36
8:15	218.80	302.20	270.16	278.75	20:15	303.8	304.80	310.63	320.48
8:30	218.80	293.60	269.65	275.60	20:30	303.8	303.90	313.88	319.30
8:45	218.80	289.60	269.84	276.52	20:45	295.2	299.50	314.03	315.81
9:00	218.80	288.60	270.02	282.00	21:00	284.3	293.60	313.77	312.72
9:15	218.80	286.50	270.41	285.64	21:15	284.3	284.00	315.13	309.87
9:30	218.80	285.90	270.38	282.82	21:30	284.3	285.10	313.93	308.74
9:45	218.80	277.90	269.48	283.85	21:45	284.3	283.70	313.87	303.61
10:00	218.80	277.00	270.92	285.74	22:00	268.8	281.30	313.50	288.84
10:15	218.80	272.50	269.38	287.91	22:15	272.8	276.00	305.16	285.66
10:30	218.80	277.10	269.61	278.31	22:30	272.8	280.80	300.62	278.45
10:45	218.80	275.90	271.09	274.53	22:45	269	270.90	300.44	272.52
11:00	218.80	271.40	271.45	274.52	23:00	222.8	270.20	300.52	268.00
11:15	218.80	279.10	271.84	270.66	23:15	222.8	263.70	271.48	254.33
11:30	218.80	273.90	270.61	269.18	23:30	222.8	265.80	260.34	251.76
11:45	218.80	276.90	271.70	272.51	23:45	222.8	262.70	260.12	247.28

Yours faithfully  
Karma Yangden

Coincidental peak load of Day(Last year):	
370.40MW	7-Feb-18
Maximum Load till date:	
399.35 MW	27-Dec-18



འབྲུག་རྒྱལ་ཁོ་ལས་འཛིན།

Bhutan Power Corporation Ltd.

Bhutan Power System Operator

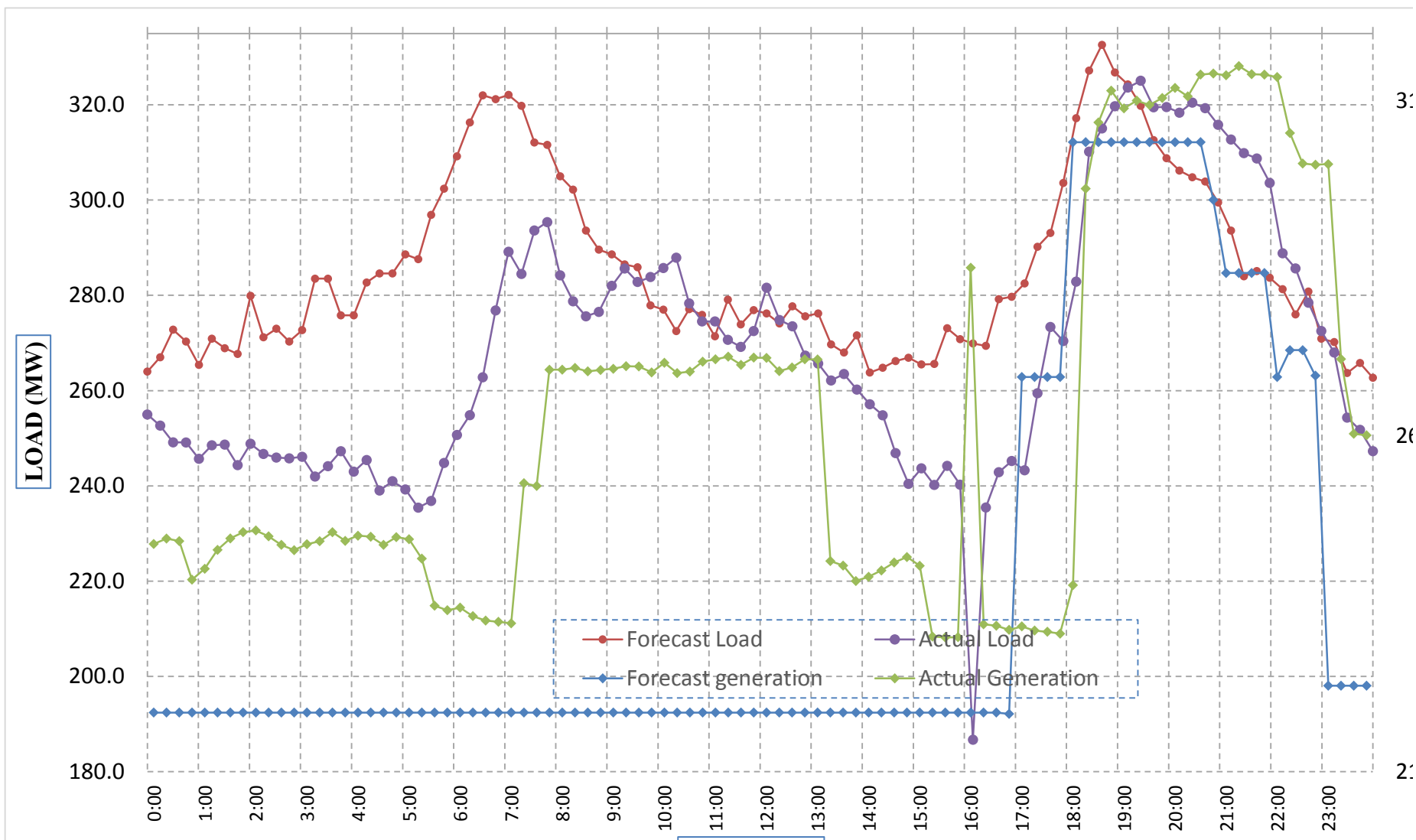
Thimphu: Bhutan



Message No.: Enter your message number  
From: Shift In-charge, Control Room

Date: 6-Feb-2019  
Time: 11:20

Forecast Generation & Load with Actual Generation & Load (05-Feb-2019).





ཕྱག་ལུགས་ལྷན་ཁུངས་ལེ་སྐོར་ལྷན་ཁུངས་།

Bhutan Power Corporation Ltd.  
Bhutan Power System Operator  
Thimphu: Bhutan



Message No.: Enter your message number  
From: Shift In-charge, Control Room

Date: 8-Feb-19  
Time: 11:38

To  
Managing Director, BPC. Email: gemtshering@bpc.bt  
Director, O&MD, DGPC. Email: director.umd@drukgreen.com  
General Manager, TD, BPC. Email: thinleygyeltshen@bpc.bt  
General Manager, DCSD, BPC. Email: sandeeprai@bpc.bt

Sub: Load Generation Balance Report of Today (08-Feb-2019).

Hours (BST)	Forecast		Actual	
	Generation	Load	Generation	Load
0:00	222.70	263.30	259.02	250.05
0:15	222.70	266.00	258.20	253.95
0:30	222.70	271.50	256.76	245.64
0:45	222.70	268.80	258.25	245.39
1:00	222.70	264.40	257.48	251.82
1:15	222.70	269.80	257.80	247.31
1:30	222.70	268.70	257.47	247.46
1:45	222.70	266.90	257.50	241.63
2:00	222.70	280.00	257.22	248.63
2:15	222.70	270.90	258.30	242.55
2:30	222.70	272.90	256.21	243.13
2:45	222.70	271.40	254.37	241.07
3:00	222.70	273.10	254.53	240.98
3:15	222.70	283.90	251.16	229.32
3:30	222.70	283.90	250.87	229.84
3:45	222.70	276.60	250.79	231.39
4:00	222.70	276.50	250.13	232.57
4:15	222.70	283.50	250.43	234.92
4:30	222.70	285.10	249.64	233.70
4:45	222.70	285.40	248.85	231.61
5:00	222.70	290.20	250.48	236.90
5:15	222.70	289.60	250.34	243.07
5:30	222.70	298.60	250.46	246.70
5:45	222.70	303.30	251.44	238.68
6:00	222.70	309.70	250.30	248.82
6:15	222.70	316.90	251.26	251.46
6:30	222.70	322.80	250.70	255.47
6:45	222.70	322.60	250.66	261.54
7:00	222.70	322.00	251.29	265.30
7:15	222.70	318.60	251.57	274.26
7:30	222.70	310.80	251.31	278.51
7:45	222.70	310.80	251.50	273.84
8:00	222.70	303.70	250.68	264.99
8:15	222.70	300.50	249.90	265.24
8:30	222.70	292.00	249.50	271.95
8:45	222.70	287.60	248.08	271.03
9:00	222.70	287.70	247.70	274.74

Yours faithfully,  
Karma Yangden

Coincidental peak load of Day(Last year):	
356.50 MW	8-Feb-18
345.24 MW	
399.35 MW	27-Dec-18



འབྲུག་ཤོག་མེ་ལས་འཛིན།

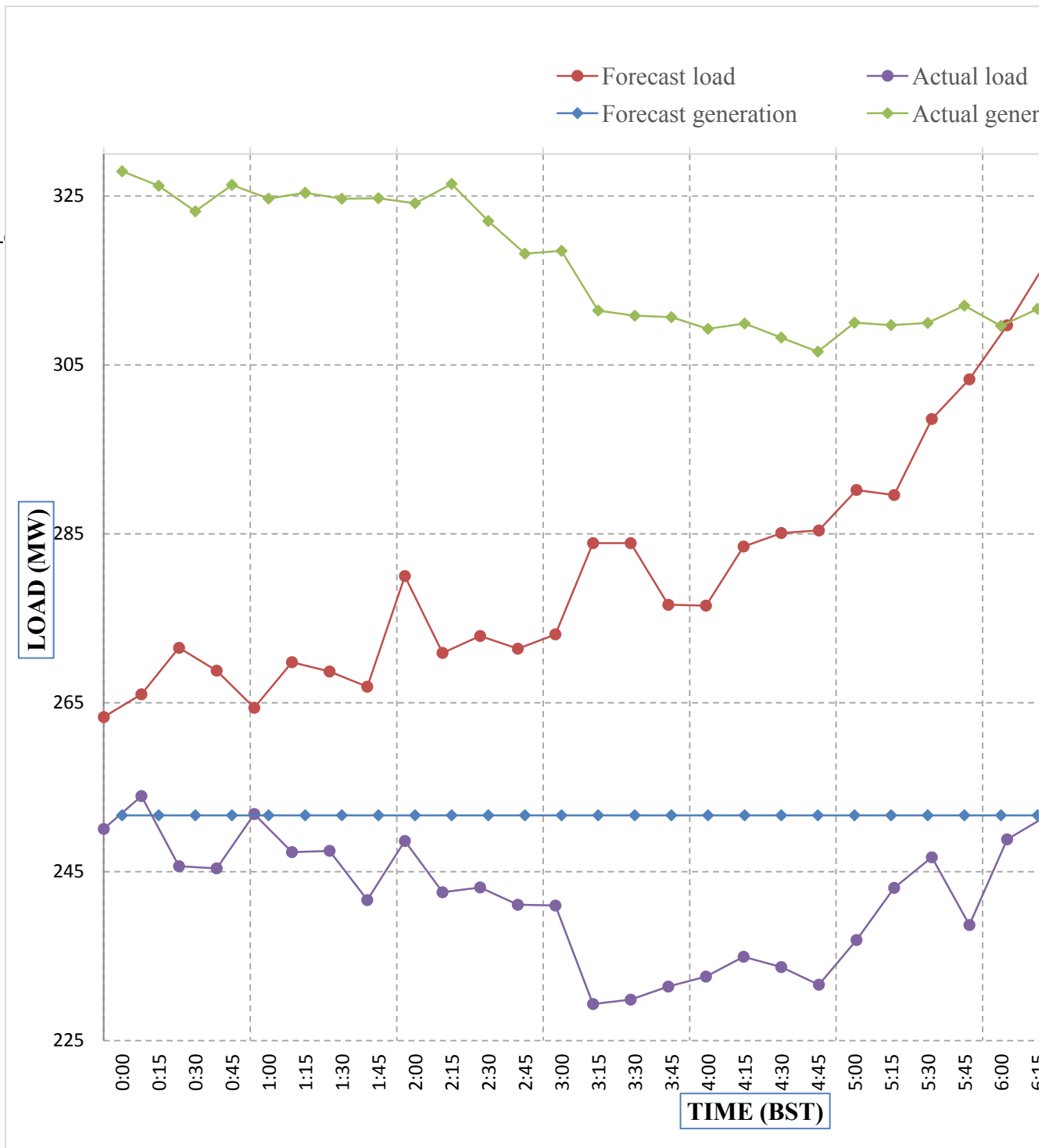
Bhutan Power Corporation Ltd.

Bhutan Power System Operator

Thimphu: Bhutan

Message No.: Enter your message number
From: Shift In-charge, Control Room

Forecast Generation & Load with Actual Generation & Load of Today from 00:00hr





འབྲུག་གྲོགས་ལེན་ལྷན་ཁག་།  
**Bhutan Power Corporation Ltd.**  
**Bhutan Power System Operator**  
 Thimphu: Bhutan



**Message No.:** Enter your message number **Date:** 8-Feb-19  
**From:** Shift In-charge, Control Room **Time:** 11:38

**To**  
 Managing Director, BPC. Email: gemtshering@bpc.bt  
 Director, O&MD, DGPC. Email: director.umd@drukgreen.com  
 General Manager, TD, BPC. Email: ktobgye@bpc.bt  
 Advisor, BPC. Email: bharrattamang@bpc.bt

**Sub:** Load Generation Balance Report of Tomorrow (09-Feb-2019).

Hours (BST)	Forecast		Hours (BST)	Forecast	
	Generation	Load		Generation	Load
0:00	227.60	263.50	12:00	222.9	277.90
0:15	227.60	265.90	12:15	222.9	276.60
0:30	227.60	270.50	12:30	222.9	278.70
0:45	227.60	267.30	12:45	222.9	275.90
1:00	227.60	263.40	13:00	222.9	276.40
1:15	227.60	268.50	13:15	222.9	270.20
1:30	227.60	267.60	13:30	222.9	270.20
1:45	227.60	265.70	13:45	222.9	272.40
2:00	227.60	278.60	14:00	222.9	263.60
2:15	227.60	270.00	14:15	222.9	264.00
2:30	227.60	271.60	14:30	222.9	261.40
2:45	227.60	270.20	14:45	222.9	262.90
3:00	227.60	273.10	15:00	222.9	263.30
3:15	227.60	282.90	15:15	222.9	261.60
3:30	227.60	282.90	15:30	222.9	268.50
3:45	227.60	277.00	15:45	222.9	268.20
4:00	227.60	275.10	16:00	222.9	267.70
4:15	227.60	282.10	16:15	222.9	268.10
4:30	227.60	282.60	16:30	222.9	276.40
4:45	227.60	283.80	16:45	222.9	276.90
5:00	222.90	287.60	17:00	222.9	280.70
5:15	222.90	288.20	17:15	222.9	286.70
5:30	222.90	297.20	17:30	222.9	288.10
6:45	222.90	302.20	17:45	222.9	297.90
6:00	222.90	311.10	18:00	336.8	310.20
6:15	222.90	318.30	18:15	336.8	322.10
6:30	222.90	324.60	18:30	336.8	328.30
6:45	222.90	323.60	18:45	336.8	320.90
7:00	222.90	325.90	19:00	336.8	319.40
7:15	222.90	322.40	19:15	336.8	313.70
7:30	222.90	313.70	19:30	336.8	308.20
7:45	222.90	314.10	19:45	336.8	304.90
8:00	222.90	306.20	20:00	336.8	301.60
8:15	222.90	301.70	20:15	336.8	300.50
8:30	222.90	292.10	20:30	336.8	298.00
8:45	222.90	288.90	20:45	336.8	293.30
9:00	222.90	289.30	21:00	336.8	281.70
9:15	222.90	288.40	21:15	336.8	273.90
9:30	222.90	287.70	21:30	336.8	276.50
9:45	222.90	282.40	21:45	336.8	274.70
10:00	222.90	280.90	22:00	298	273.90
10:15	222.90	272.50	22:15	298	269.20
10:30	222.90	278.80	22:30	298	276.40
10:45	222.90	278.80	22:45	298	265.30
11:00	222.90	273.40	23:00	227.6	265.40
11:15	222.90	280.10	23:15	227.6	257.00
11:30	222.90	274.80	23:30	227.6	260.90
11:45	222.90	278.30	23:45	227.6	257.10

Yours faithfully,  
 Kinley Wangmo



འབྲུག་གྲོག་མེ་ལས་འཛིན།

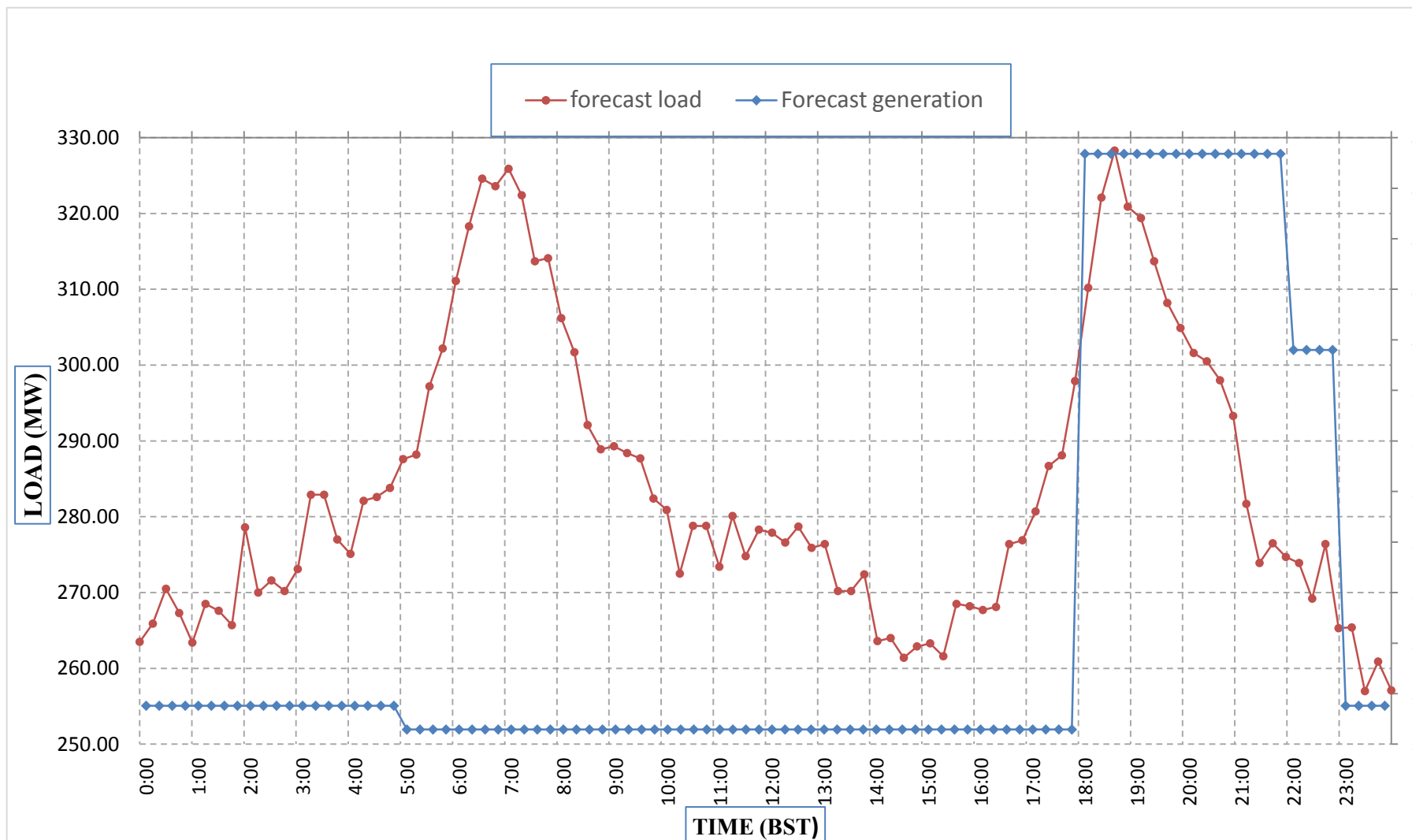
Bhutan Power Corporation Ltd.  
Bhutan Power System Operator  
Thimphu: Bhutan



Message No.: Enter your message number  
From: Shift In-charge, Control Room

Date: 6-Feb-19  
Time: 11:23

### Forecast Generation & Load Forecast for Tomorrow (07-Feb-2019).







འབྲུག་གི་འཕུལ་གྲུབ་ལས་འཁུར་ལྷན་ཁག་།

Bhutan Power Corporation Ltd.  
Bhutan Power System Operator  
Thimphu: Bhutan



Message No.: Enter your message number  
From: Shift In-charge, Control Room

Date: 8-Feb-19  
Time: 11:38

To  
Managing Director, BPC. Email: gemtshering@bpc.bt  
Director, O&MD, DGPC. Email: director.umd@drukgreen.com  
General Manager, TD, BPC. Email: ktobgye@bpc.bt  
Advisor, BPC. Email: bharattamang@bpc.bt

Sub: Forecast Generation and Actual Generation of Dagachhu (07-Feb-2019).

Hours (BST)	Actual Frequency	Forecast Generation	Actual Generation	Hours (BST)	Actual Frequency	Forecast Generation	Actual Generation
0:00	50.02	15.00	15.42	12:00	50.01	15.00	15.44
0:15	50.04	15.00	15.42	12:15	50.07	15.00	15.48
0:30	50.03	15.00	15.42	12:30	50.03	15.00	15.47
0:45	49.97	15.00	15.44	12:45	50.08	15.00	15.42
1:00	49.99	15.00	15.41	13:00	50.05	15.00	15.41
1:15	49.94	15.00	15.43	13:15	50.08	15.00	15.40
1:30	50.01	15.00	15.44	13:30	50.15	15.00	15.42
1:45	49.98	15.00	15.44	13:45	50.04	15.00	13.23
2:00	49.91	15.00	15.41	14:00	49.96	15.00	15.42
2:15	49.98	15.00	15.44	14:15	50.01	15.00	15.61
2:30	49.98	15.00	15.44	14:30	50.03	15.00	15.61
2:45	50.04	15.00	15.43	14:45	49.98	15.00	15.60
3:00	50.01	15.00	15.41	15:00	49.97	15.00	15.60
3:15	50.05	15.00	15.40	15:15	49.98	15.00	15.62
3:30	50.03	15.00	15.42	15:30	49.96	15.00	15.63
3:45	50.02	15.00	15.41	15:45	49.94	15.00	15.62
4:00	50.07	15.00	15.44	16:00	49.94	15.00	15.61
4:15	50.04	15.00	15.22	16:15	49.99	15.00	15.62
4:30	49.97	15.00	15.21	16:30	50.05	15.00	15.62
4:45	50.02	15.00	15.25	16:45	50.02	15.00	15.62
5:00	50.03	15.00	15.21	17:00	49.99	15.00	15.63
5:15	50.02	15.00	12.42	17:15	49.97	15.00	15.60
5:30	50.00	15.00	15.72	17:30	49.93	15.00	15.54
6:45	50.00	15.00	15.75	17:45	49.93	15.00	15.47
6:00	50.00	15.00	15.74	18:00	49.94	15.00	15.51
6:15	50.05	15.00	15.75	18:15	49.94	15.00	15.52
6:30	50.06	15.00	15.71	18:30	49.99	15.00	15.51
6:45	50.02	15.00	15.73	18:45	49.98	15.00	15.53
7:00	50.02	15.00	15.73	19:00	50.03	15.00	15.51
7:15	49.99	15.00	15.71	19:15	50.00	15.00	15.53
7:30	50.03	15.00	15.76	19:30	50.06	15.00	15.52
7:45	50.04	15.00	15.70	19:45	50.04	15.00	15.52
8:00	50.02	15.00	15.78	20:00	50.05	15.00	15.54
8:15	50.06	15.00	15.73	20:15	50.02	15.00	15.52
8:30	50.06	15.00	15.41	20:30	50.04	15.00	15.23
8:45	50.06	15.00	15.42	20:45	50.03	15.00	15.24
9:00	50.07	15.00	15.23	21:00	49.99	15.00	15.22
9:15	50.05	15.00	15.24	21:15	49.98	15.00	15.25
9:30	50.03	15.00	15.43	21:30	49.93	15.00	15.22
9:45	50.05	15.00	15.40	21:45	50.01	15.00	15.22
10:00	50.06	15.00	15.45	22:00	50.00	15.00	15.24
10:15	50.08	15.00	15.45	22:15	50.02	15.00	15.43
10:30	50.03	15.00	15.41	22:30	49.96	15.00	15.43
10:45	50.08	15.00	15.41	22:45	50.06	15.00	15.44
11:00	50.06	15.00	15.41	23:00	50.04	15.00	14.23
11:15	50.06	15.00	15.41	23:15	50.06	15.00	14.24
11:30	49.99	15.00	15.31	23:30	50.05	15.00	14.25
11:45	50.03	15.00	15.32	23:45	50.08	15.00	15.42

Note:  
Yours faithfully,  
Karma Yangden



འབྲུག་གྲོག་མེ་ལས་འཛིན།

Bhutan Power Corporation Ltd.  
Bhutan Power System Operator  
Thimphu: Bhutan



Message No.: Enter your message number  
From: Shift In-charge, Control Room

Date: 6-Feb-19  
Time: 11:23

Forecast Generation & Actual Generation of Dagachhu(05-Feb-2019).

