



ཕྱག་ལུག་གི་མཉམ་ལས་འཛིན།

Bhutan Power Corporation Ltd.
Bhutan Power System Operator
Thimphu: Bhutan



Message No.: Enter your message number
From: Shift In-charge, Control Room

Date: 29-Apr-18
Time: 10:35

To
Managing Director, BPC. Email: gemtshering@bpc.bt
Director, O&MD, DGPC. Email: director.umd@drukgreen.com
General Manager, TD, BPC. Email: ktobgye@bpc.bt
General Manager, DCSD, BPC. Email: sandeeprai@bpc.bt

Sub: **Load Generation Balance Report of Yesterday (28-Apr-2018).**

Hours (BST)	Forecast		Actual		Hours (BST)	Forecast		Actual	
	Generation	Load	Generation	Load		Generation	Load	Generation	Load
0:00	328.8	243.00	339.64	251.35	12:00	320.70	254.00	345.23	285.80
0:15	328.8	243.10	339.63	253.25	12:15	320.70	250.80	345.80	284.37
0:30	328.8	240.10	341.13	253.91	12:30	320.70	251.40	345.88	284.81
0:45	328.8	240.00	341.22	249.32	12:45	320.70	254.10	344.77	281.86
1:00	328.8	242.00	339.85	246.41	13:00	320.70	251.10	344.95	262.68
1:15	327.8	244.60	340.47	245.15	13:15	320.70	228.60	345.30	253.87
1:30	327.8	242.10	341.20	239.84	13:30	320.70	247.40	344.72	252.06
1:45	327.8	240.30	341.25	237.37	13:45	320.70	248.30	345.05	260.70
2:00	327.8	241.90	341.25	242.08	14:00	320.70	219.40	359.09	267.35
2:15	327.8	241.20	340.52	245.15	14:15	319.60	217.90	358.57	265.71
2:30	327.8	240.50	341.48	245.41	14:30	319.60	219.70	358.20	266.04
2:45	327.8	237.00	340.50	240.79	14:45	319.60	220.00	357.79	270.38
3:00	327.8	235.40	341.23	246.50	15:00	319.60	221.50	357.49	266.02
3:15	329.8	236.60	340.64	231.43	15:15	319.60	220.90	343.86	274.76
3:30	329.8	237.50	341.30	243.81	15:30	319.60	214.20	347.91	269.45
3:45	329.8	243.20	340.91	246.29	15:45	319.60	224.00	348.33	273.52
4:00	329.8	245.00	341.96	244.46	16:00	319.60	231.80	348.80	271.69
4:15	329.8	244.90	340.94	244.77	16:15	321.70	231.70	344.80	273.98
4:30	329.8	243.90	340.13	245.64	16:30	321.70	234.40	345.16	271.88
4:45	329.8	245.40	340.63	248.44	16:45	321.70	235.50	343.99	274.59
5:00	329.8	247.80	342.52	248.98	17:00	321.70	240.10	345.85	276.40
5:15	329.8	250.30	340.17	252.59	17:15	310.90	249.60	345.18	278.66
5:30	329.8	258.30	340.80	260.77	17:30	310.90	258.70	343.88	279.43
5:45	329.8	273.30	341.13	268.86	17:45	310.90	262.00	344.27	281.89
6:00	329.8	278.30	340.05	278.42	18:00	310.90	269.90	345.36	293.56
6:15	339.8	281.00	340.22	278.86	18:15	315.30	275.70	343.15	300.25
6:30	339.8	283.10	339.95	289.15	18:30	319.70	278.00	352.04	298.29
6:45	339.8	289.50	340.84	293.34	18:45	319.70	293.80	351.50	305.46
7:00	339.8	266.40	340.95	288.85	19:00	319.70	303.20	353.09	312.64
7:15	339.8	242.40	340.22	290.50	19:15	329.40	304.60	356.68	316.37
7:30	339.8	263.00	340.14	291.11	19:30	329.40	299.90	354.20	317.76
7:45	339.8	278.70	339.98	281.86	19:45	329.40	296.50	352.11	306.65
8:00	339.8	274.00	339.46	280.09	20:00	329.40	293.90	354.77	307.53
8:15	340.8	274.70	343.88	287.15	20:15	329.60	293.70	352.88	305.88
8:30	332.6	271.40	341.24	277.26	20:30	329.60	288.80	353.61	300.71
8:45	332.6	267.90	341.41	283.79	20:45	329.60	282.50	352.13	301.23
9:00	332.6	265.40	338.92	291.38	21:00	329.60	277.20	351.96	293.92
9:15	332.6	265.10	340.09	287.74	21:15	329.60	262.00	353.02	293.90
9:30	332.6	264.00	339.38	289.74	21:30	329.60	268.10	349.90	288.63
9:45	332.6	253.00	339.32	286.55	21:45	329.60	266.90	352.02	287.69
10:00	332.6	253.30	334.19	287.62	22:00	329.60	243.80	352.88	283.13
10:15	320.7	252.10	324.02	284.95	22:15	329.60	251.50	349.76	276.34
10:30	320.7	251.10	284.68	272.61	22:30	329.60	249.70	351.81	272.97
10:45	320.7	249.80	329.72	264.21	22:45	329.60	243.80	351.51	270.59
11:00	320.7	249.90	344.49	262.35	23:00	329.60	243.70	352.91	262.39
11:15	320.7	251.10	343.91	259.99	23:15	329.60	241.50	349.07	255.18
11:30	320.7	252.60	345.43	268.98	23:30	329.60	237.80	352.81	258.97
11:45	320.7	255.10	345.72	265.84	23:45	329.60	237.90	351.59	255.56

Yours faithfully
Pema Lhamo

Coincidental peak load of Day(Last year):	
316.4	28-Apr-17
Maximum Load till date:	
375.23 MW	24-Feb-18



འབྲུག་གྲོག་མེ་ལས་འཛིན།

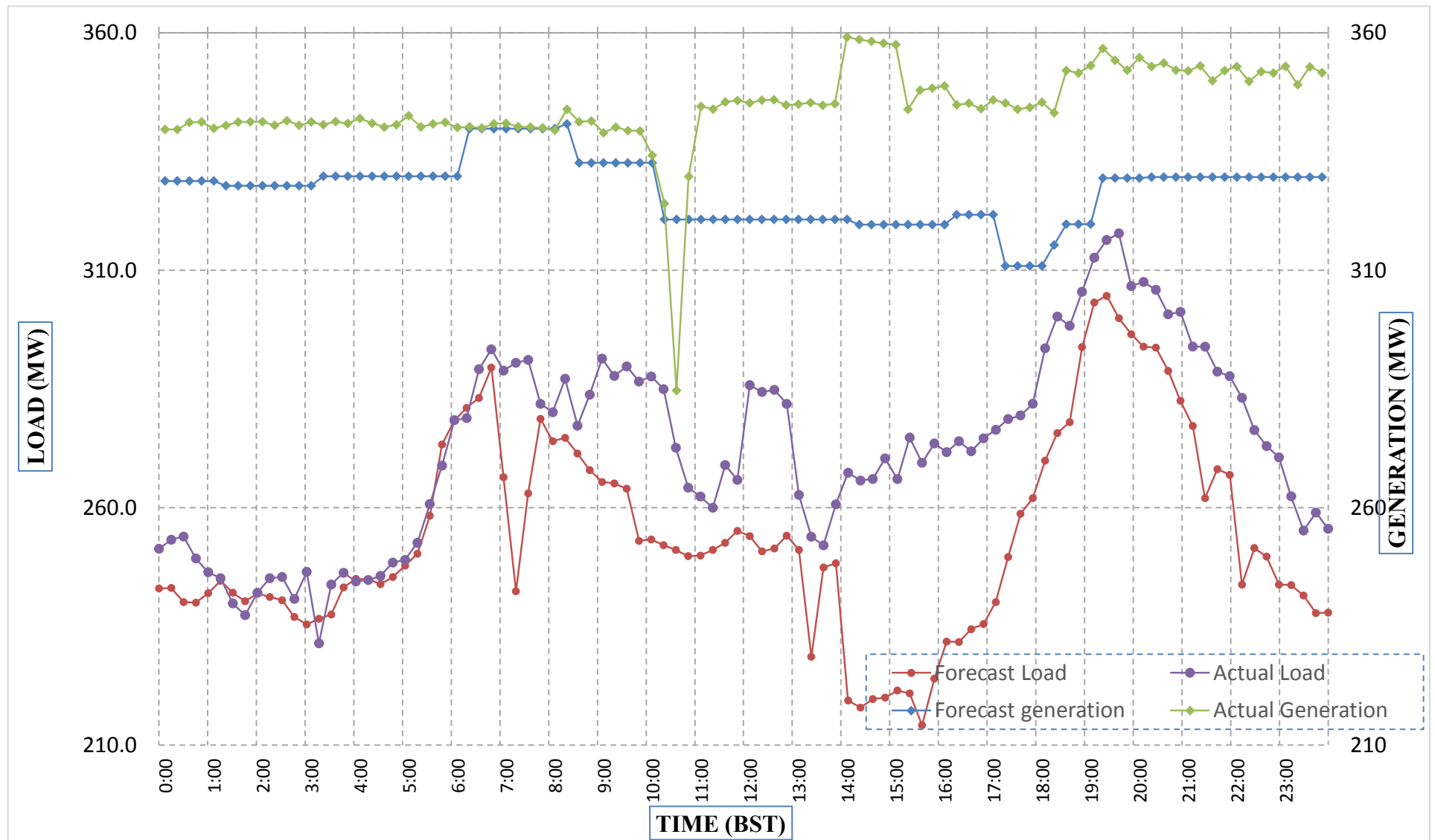
Bhutan Power Corporation Ltd.
 Bhutan Power System Operator
 Thimphu: Bhutan



Message No.: Enter your message number
 From: Shift In-charge, Control Room

Date: 29-Apr-18
 Time: 10:00

Forecast Generation & Load with Actual Generation & Load (28-Apr-2018).



Yours faithfully,
 Pema Lhamo

	MW	Coincidental peak load of Day(Last year):	
Peak Co-incident Generation(28-Apr-2018).	359.09	316.4	28-Apr-17
Peak Co-incident Load(28-Apr-2018).	317.76		
		Maximum Load till date:	
		375.23 MW	24-Feb-18

Telephone: +975-02335631; Fax: +975-02335632; Email: bhutansystemoperator@bpc.bt; www.bpc.bt



ཕྱག་ལུགས་ལྷན་ཁུངས་ལེ་སྐོར་ལྷན་ཁུངས་།

Bhutan Power Corporation Ltd.
Bhutan Power System Operator
Thimphu: Bhutan



Message No.: Enter your message number
From: Shift In-charge, Control Room

Date: 29-Apr-18
Time: 10:35

To
Managing Director, BPC. Email: gemtshering@bpc.bt
Director, O&MD, DGPC. Email: director.umd@drukgreen.com
General Manager, TD, BPC. Email: thinleygyeltshen@bpc.bt
General Manager, DCSD, BPC. Email: sandeeprai@bpc.bt

Sub: Load Generation Balance Report of Today (29-Apr-2018).

Hours (BST)	Forecast		Actual	
	Generation	Load	Generation	Load
0:00	342.73	216.86	356.52	259.81
0:15	342.44	216.66	374.49	261.02
0:30	342.02	214.36	371.99	261.77
0:45	345.08	216.28	373.66	260.38
1:00	341.11	209.11	374.10	261.66
1:15	343.34	212.41	370.70	262.99
1:30	342.12	210.18	373.26	254.73
1:45	344.98	207.76	375.46	255.86
2:00	344.15	213.15	376.85	255.29
2:15	344.03	215.88	379.68	249.96
2:30	345.95	207.22	380.94	248.93
2:45	346.41	213.30	378.66	245.29
3:00	344.20	212.51	383.21	254.03
3:15	342.26	213.15	384.70	254.96
3:30	336.98	215.73	388.27	256.07
3:45	338.44	214.50	385.59	259.65
4:00	338.17	222.62	388.05	256.81
4:15	337.77	222.73	386.47	261.12
4:30	337.65	227.54	386.45	259.63
4:45	337.88	217.63	386.15	266.28
5:00	337.73	230.86	384.65	266.02
5:15	337.27	238.43	385.09	266.27
5:30	353.57	249.72	386.47	278.50
5:45	354.24	247.82	381.19	283.31
6:00	355.27	270.27	382.81	287.18
6:15	355.70	268.55	385.28	288.02
6:30	346.42	272.77	385.38	289.53
6:45	346.72	282.70	386.51	293.59
7:00	347.77	286.51	385.91	292.11
7:15	341.56	282.84	385.77	293.55
7:30	342.95	280.02	380.88	293.54
7:45	343.09	269.33	381.52	289.27
8:00	343.06	264.45	382.98	286.64
8:15	327.52	270.13	383.05	288.96
8:30	316.55	253.74	382.69	289.55
8:45	317.03	250.05	380.45	293.48
9:00	316.93	234.72	380.30	296.48

Yours faithfully,
Pema Lhamo

Coincidental peak load of Day(Last year):	
323.83	29-Apr-17

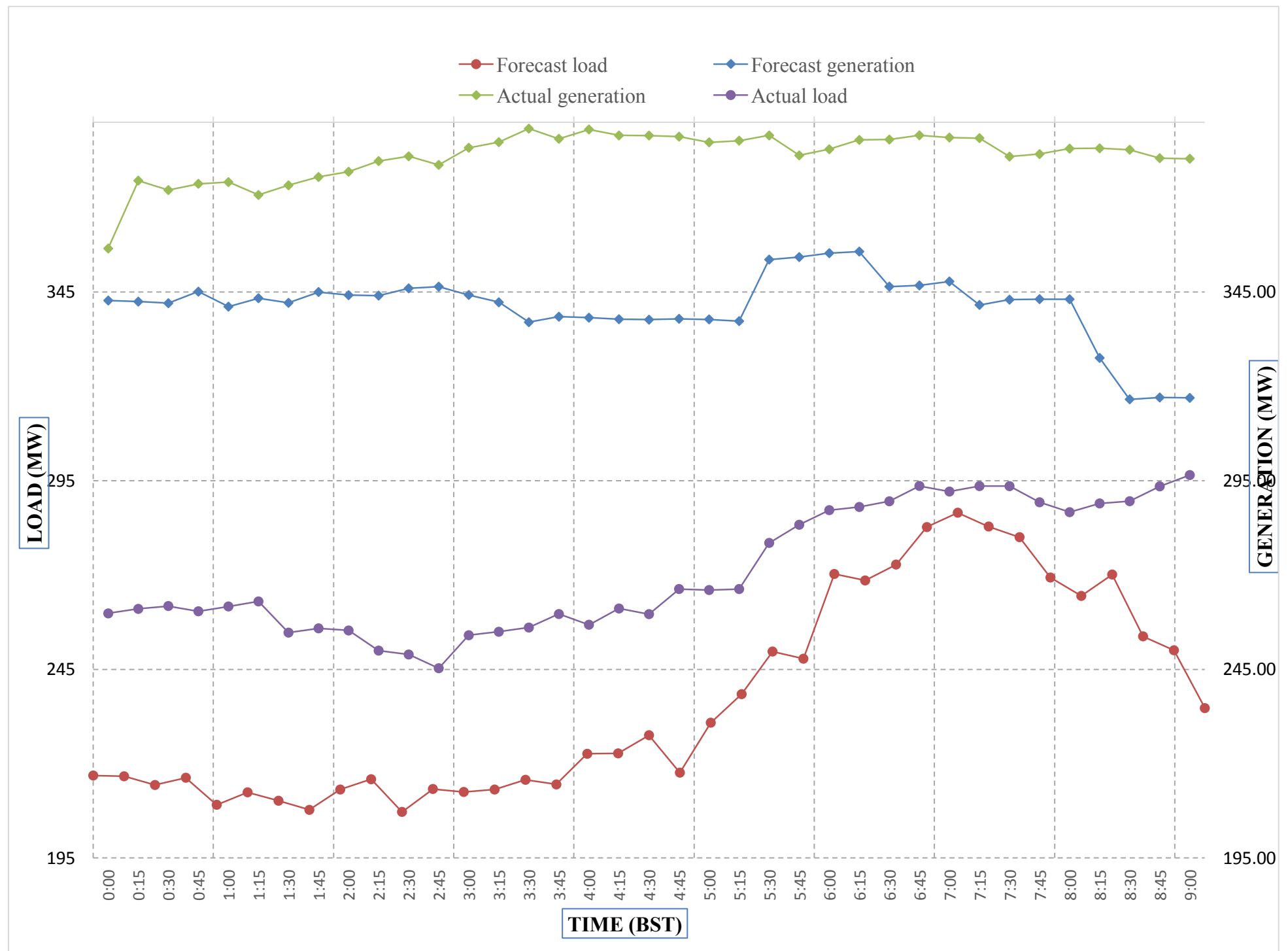
Maximum Load till date:	
375.23 MW	24-Feb-18



Message No.: Enter your message number
 From: Shift In-charge, Control Room

Date: 29-Apr-18
 Time: 10:47

Forecast Generation & Load with Actual Generation & Load of Today from 00:00hrs to 09:00hrs(29-Apr-2018).



Yours faithfully
 Pema Lhamo

Coincidental peak load of Day(Last)	
323.83	29-Apr-17
Maximum Load till date:	
375.23 MW	24-Feb-18



འབྲུག་གྲོག་མེ་ལམ་འཛིན།
Bhutan Power Corporation Ltd.
Bhutan Power System Operator
 Thimphu: Bhutan



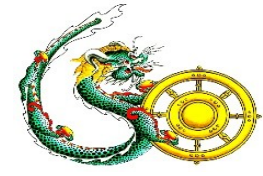
Message No.: Enter your message number **Date:** 29-Apr-18
From: Shift In-charge, Control Room **Time:** 10:35

To
 Managing Director, BPC. Email: gemtshering@bpc.bt
 Director, O&MD, DGPC. Email: director.umd@drukgreen.com
 General Manager, TD, BPC. Email: ktobgye@bpc.bt
 Advisor, BPC. Email: bharattamang@bpc.bt

Sub: Load Generation Balance Report of Tomorrow (30-Apr-2018).

Hours (BST)	Forecast		Hours (BST)	Forecast	
	Generation	Load		Generation	Load
0:00	378.60	243.10	12:00	378.60	266.10
0:15	378.60	244.40	12:15	378.60	263.40
0:30	378.60	241.30	12:30	378.60	264.60
0:45	378.60	241.60	12:45	378.60	265.30
1:00	378.60	240.50	13:00	378.60	254.90
1:15	378.60	242.40	13:15	378.60	240.50
1:30	378.60	241.30	13:30	378.60	251.70
1:45	378.60	236.70	13:45	378.60	257.80
2:00	378.60	239.80	14:00	378.60	240.80
2:15	378.60	239.00	14:15	378.60	244.50
2:30	378.60	239.00	14:30	378.60	247.90
2:45	378.60	237.50	14:45	378.60	244.50
3:00	378.60	236.80	15:00	378.60	244.80
3:15	378.60	233.90	15:15	378.60	245.30
3:30	378.60	239.20	15:30	378.60	243.10
3:45	378.60	242.50	15:45	378.60	250.80
4:00	378.60	245.20	16:00	378.60	252.50
4:15	378.60	245.50	16:15	378.60	254.30
4:30	378.60	247.10	16:30	378.60	253.20
4:45	378.60	244.70	16:45	378.60	257.80
5:00	378.60	248.80	17:00	378.60	260.00
5:15	378.60	254.00	17:15	378.60	267.00
5:30	378.60	260.20	17:30	378.60	274.20
6:45	378.60	273.10	17:45	378.60	276.20
6:00	383.30	283.30	18:00	383.50	283.50
6:15	385.70	285.70	18:15	390.90	290.90
6:30	386.90	286.90	18:30	395.10	295.10
6:45	394.80	294.80	18:45	403.20	303.20
7:00	382.60	282.60	19:00	404.20	312.30
7:15	378.60	271.60	19:15	404.20	318.20
7:30	378.60	276.90	19:30	404.20	313.40
7:45	382.30	282.30	19:45	404.20	310.90
8:00	380.60	280.60	20:00	404.20	306.50
8:15	382.00	282.00	20:15	404.20	306.80
8:30	378.60	276.50	20:30	401.50	301.50
8:45	378.60	277.40	20:45	396.70	296.70
9:00	378.60	273.10	21:00	391.90	291.90
9:15	378.60	276.00	21:15	382.60	282.60
9:30	378.60	274.70	21:30	382.90	282.90
9:45	378.60	268.10	21:45	380.40	280.40
10:00	378.60	266.90	22:00	378.60	264.90
10:15	378.60	266.40	22:15	378.60	265.30
10:30	378.60	260.70	22:30	378.60	262.50
10:45	378.60	259.60	22:45	378.60	259.10
11:00	378.60	257.40	23:00	378.60	255.50
11:15	378.60	259.20	23:15	378.60	252.10
11:30	378.60	262.10	23:30	378.60	250.40
11:45	378.60	260.50	23:45	378.60	252.00

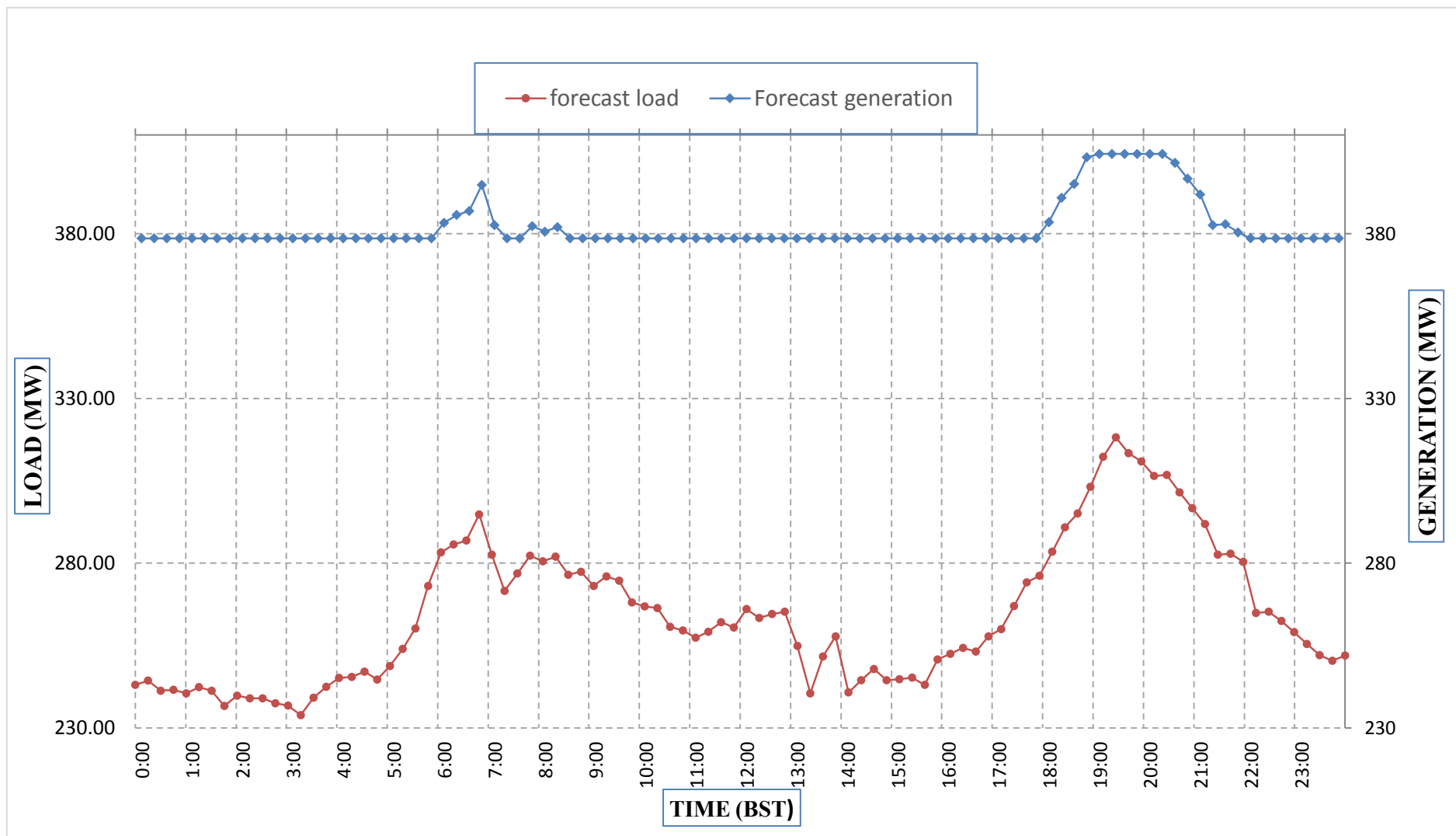
Yours faithfully,
 Pema Lhamo



Message No.: Enter your message number
 From: Shift In-charge, Control Room

Date: 29-Apr-18
 Time: 10:35

Forecast Generation & Load Forecast for Tomorrow (30-Apr-2018).



Yours faithfully,
 Pema Lhamo

	MW
Scheduled Peak Generation(30-Apr-2018).	404.20
Forecast Peak Load(30-Apr-2018).	318.20



འབྲུག་གཞི་རྒྱུ་ལྷན་ཁག་ལྷན་ཁུངས་།

Bhutan Power Corporation Ltd.
Bhutan Power System Operator
Thimphu: Bhutan



Message No.:

Enter your message number

Date: 29-Apr-18

From:

Shift In-charge, Control Room

Time: 10:35

To

Managing Director, BPC. Email: gemtshering@bpc.bt
Director, O&MD, DGPC. Email: director.umd@drukgreen.com
General Manager, TD, BPC. Email: ktobgye@bpc.bt
Advisor, BPC. Email: bharattamang@bpc.bt

Sub:

Forecast Generation and Actual Generation of Dagachhu (28-Apr-2018).

Hours (BST)	Actual Frequency	Forecast Generation	Actual Generation	Hours (BST)	Actual Frequency	Forecast Generation	Actual Generation
0:00	0.00	0.00	0.00	12:00	0.00	0.00	0.00
0:15	0.00	0.00	0.00	12:15	0.00	0.00	0.00
0:30	0.00	0.00	0.00	12:30	0.00	0.00	0.00
0:45	0.00	0.00	0.00	12:45	0.00	0.00	0.00
1:00	0.00	0.00	0.00	13:00	0.00	0.00	0.00
1:15	0.00	0.00	0.00	13:15	0.00	0.00	0.00
1:30	0.00	0.00	0.00	13:30	0.00	0.00	0.00
1:45	0.00	0.00	0.00	13:45	0.00	0.00	0.00
2:00	0.00	0.00	0.00	14:00	0.00	0.00	0.00
2:15	0.00	0.00	0.00	14:15	0.00	0.00	0.00
2:30	0.00	0.00	0.00	14:30	0.00	0.00	0.00
2:45	0.00	0.00	0.00	14:45	0.00	0.00	0.00
3:00	0.00	0.00	0.00	15:00	0.00	0.00	0.00
3:15	0.00	0.00	0.00	15:15	0.00	0.00	0.00
3:30	0.00	0.00	0.00	15:30	0.00	0.00	0.00
3:45	0.00	0.00	0.00	15:45	0.00	0.00	0.00
4:00	0.00	0.00	0.00	16:00	0.00	0.00	0.00
4:15	0.00	0.00	0.00	16:15	0.00	0.00	0.00
4:30	0.00	0.00	0.00	16:30	49.96	0.00	0.00
4:45	0.00	0.00	0.00	16:45	49.92	0.00	0.00
5:00	0.00	0.00	0.00	17:00	49.95	0.00	0.00
5:15	0.00	0.00	0.00	17:15	50.00	0.00	0.00
5:30	0.00	0.00	0.00	17:30	50.02	0.00	0.00
6:45	0.00	0.00	0.00	17:45	50.00	0.00	0.00
6:00	0.00	0.00	0.00	18:00	50.03	0.00	0.00
6:15	0.00	0.00	0.00	18:15	50.07	0.00	0.00
6:30	0.00	0.00	0.00	18:30	49.99	0.00	0.00
6:45	0.00	0.00	0.00	18:45	50.03	0.00	0.00
7:00	0.00	0.00	0.00	19:00	50.01	0.00	0.00
7:15	0.00	0.00	0.00	19:15	49.94	0.00	0.00
7:30	0.00	0.00	0.00	19:30	49.95	0.00	0.00
7:45	0.00	0.00	0.00	19:45	49.96	0.00	0.00
8:00	0.00	0.00	0.00	20:00	50.03	0.00	0.00
8:15	0.00	0.00	0.00	20:15	50.01	0.00	0.00
8:30	0.00	0.00	0.00	20:30	49.98	0.00	0.00
8:45	0.00	0.00	0.00	20:45	50.00	0.00	0.00
9:00	0.00	0.00	0.00	21:00	49.97	0.00	0.00
9:15	0.00	0.00	0.00	21:15	50.00	0.00	0.00
9:30	0.00	0.00	0.00	21:30	50.00	0.00	0.00
9:45	0.00	0.00	0.00	21:45	0.00	0.00	0.00
10:00	0.00	0.00	0.00	22:00	49.98	0.00	0.00
10:15	0.00	0.00	0.00	22:15	49.87	0.00	0.00
10:30	0.00	0.00	0.00	22:30	49.89	0.00	0.00
10:45	0.00	0.00	0.00	22:45	49.86	0.00	0.00
11:00	0.00	0.00	0.00	23:00	49.84	0.00	0.00
11:15	0.00	0.00	0.00	23:15	49.88	0.00	0.00
11:30	0.00	0.00	0.00	23:30	49.88	0.00	0.00
11:45	0.00	0.00	0.00	23:45	49.94	0.00	0.00

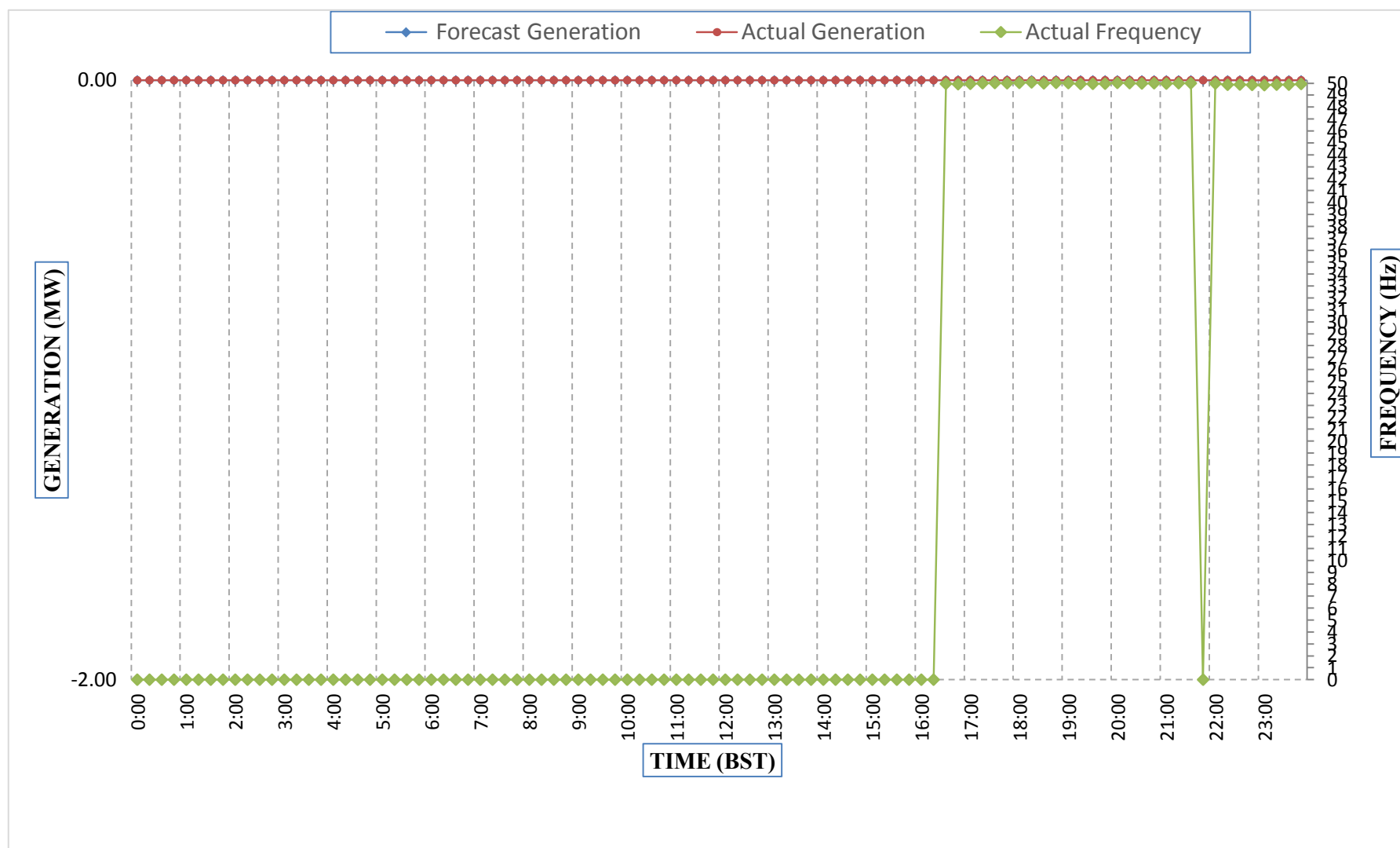
Yours faithfully,
Pema Lhamo



Message No.: Enter your message number
 From: Shift In-charge, Control Room

Date: 29-Apr-18
 Time: 10:35

Forecast Generation & Actual Generation of Dagachhu(28-Apr-2018).



Yours faithfully,
 Pema Lhamo