



འབྲུག་གྲོག་མེ་ལམ་འཛིན།

Bhutan Power Corporation Ltd.
Bhutan Power System Operator
Thimphu: Bhutan



Message No.: Enter your message number
From: Shift In-charge, Control Room

Date: 28-Apr-18
Time: 11:54

To
Managing Director, BPC. Email: gemtshering@bpc.bt
Director, O&MD, DGPC. Email: director.umd@drukgreen.com
General Manager, TD, BPC. Email: ktobgye@bpc.bt
General Manager, DCSD, BPC. Email: sandeeprai@bpc.bt

Sub: **Load Generation Balance Report of Yesterday (27-Apr-2018).**

Hours (BST)	Forecast		Actual		Hours (BST)	Forecast		Actual	
	Generation	Load	Generation	Load		Generation	Load	Generation	Load
0:00	364.9	245.50	342.73	216.86	12:00	356.70	260.60	323.12	260.05
0:15	364.9	245.30	342.44	216.66	12:15	356.70	259.90	324.74	258.65
0:30	364.9	242.20	342.02	214.36	12:30	356.70	260.70	324.30	258.40
0:45	364.9	242.50	345.08	216.28	12:45	356.70	258.10	323.81	255.04
1:00	364.9	242.70	341.11	209.11	13:00	356.70	256.80	324.47	244.30
1:15	364.9	246.40	343.34	212.41	13:15	356.70	252.20	290.80	244.35
1:30	364.9	243.20	342.12	210.18	13:30	356.70	249.50	306.93	249.38
1:45	364.9	243.10	344.98	207.76	13:45	356.70	250.90	324.52	254.99
2:00	364.9	243.60	344.15	213.15	14:00	356.70	214.00	324.87	258.48
2:15	364.9	242.80	344.03	215.88	14:15	356.70	214.60	333.09	266.88
2:30	364.9	241.00	345.95	207.22	14:30	356.70	216.10	332.66	274.10
2:45	364.9	239.70	346.41	213.30	14:45	356.70	223.20	333.42	266.74
3:00	364.9	237.80	344.20	212.51	15:00	356.70	226.20	332.45	262.58
3:15	364.9	239.40	342.26	213.15	15:15	356.70	225.90	333.01	269.21
3:30	364.9	240.80	336.98	215.73	15:30	356.70	223.50	332.98	266.60
3:45	364.9	244.70	338.44	214.50	15:45	356.70	225.40	332.93	273.70
4:00	364.9	244.60	338.17	222.62	16:00	356.70	231.10	333.35	262.05
4:15	364.9	244.50	337.77	222.73	16:15	356.70	234.00	333.76	273.05
4:30	364.9	243.20	337.65	227.54	16:30	356.70	234.80	332.24	276.45
4:45	364.9	245.70	337.88	217.63	16:45	356.70	232.70	332.26	275.51
5:00	364.9	251.60	337.73	230.86	17:00	356.70	241.60	333.33	272.91
5:15	364.9	254.60	337.27	238.43	17:15	356.70	243.30	332.83	272.69
5:30	364.9	265.20	353.57	249.72	17:30	356.70	252.80	333.16	280.27
5:45	364.9	277.00	354.24	247.82	17:45	356.70	259.80	332.13	279.76
6:00	364.9	280.70	355.27	270.27	18:00	364.90	270.20	332.89	282.79
6:15	364.9	284.00	355.70	268.55	18:15	364.90	275.60	332.66	289.57
6:30	364.9	287.20	346.42	272.77	18:30	364.90	280.20	332.48	302.86
6:45	364.9	290.00	346.72	282.70	18:45	364.90	296.20	333.55	290.36
7:00	364.9	284.90	347.77	286.51	19:00	364.90	304.70	329.84	311.19
7:15	364.9	267.80	341.56	282.84	19:15	364.90	305.60	331.00	325.30
7:30	364.9	282.40	342.95	280.02	19:30	364.90	301.80	339.01	319.95
7:45	364.9	281.30	343.09	269.33	19:45	364.90	300.10	338.24	316.05
8:00	356.7	274.90	343.06	264.45	20:00	364.90	295.50	351.70	321.21
8:15	356.7	275.00	327.52	270.13	20:15	364.90	294.70	328.76	306.34
8:30	356.7	271.20	316.55	253.74	20:30	364.90	293.60	346.95	310.63
8:45	356.7	268.80	317.03	250.05	20:45	364.90	284.80	341.93	303.66
9:00	356.7	265.60	316.93	234.72	21:00	364.90	281.40	337.06	293.89
9:15	356.7	265.70	316.73	250.51	21:15	364.90	260.80	335.50	292.54
9:30	356.7	263.80	316.94	253.55	21:30	364.90	274.60	334.59	288.30
9:45	356.7	257.90	316.88	256.68	21:45	364.90	270.30	334.16	280.31
10:00	356.7	256.00	317.29	254.71	22:00	364.90	248.10	334.70	268.88
10:15	356.7	254.60	321.91	252.99	22:15	364.90	260.00	330.75	265.77
10:30	356.7	253.10	323.55	257.59	22:30	364.90	258.30	340.63	264.58
10:45	356.7	254.40	280.62	255.18	22:45	364.90	253.20	340.34	262.41
11:00	356.7	253.30	342.68	258.16	23:00	364.90	251.10	340.85	262.11
11:15	356.7	255.50	332.40	257.98	23:15	364.90	251.30	340.45	249.71
11:30	356.7	258.40	322.09	259.09	23:30	364.90	246.30	339.91	257.46
11:45	356.7	262.50	322.63	254.50	23:45	364.90	247.80	339.92	250.01

Yours faithfully
Pema Lhamo

Coincidental peak load of Day(Last year):	
312.16	27-Apr-17
Maximum Load till date:	
375.23 MW	24-Feb-18



འབྲུག་གྲོག་མེ་ལས་འཛིན།

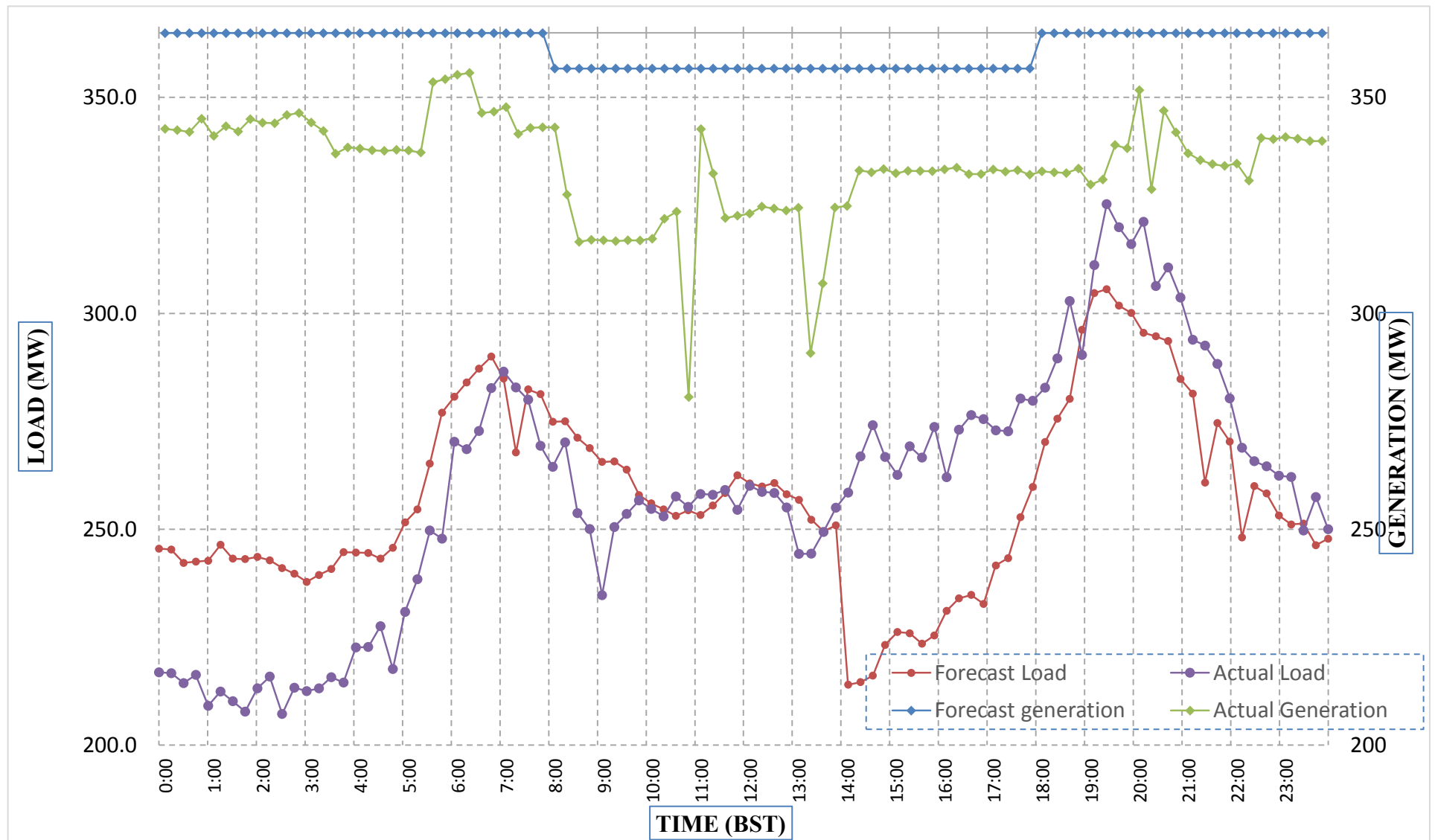
Bhutan Power Corporation Ltd.
 Bhutan Power System Operator
 Thimphu: Bhutan



Message No.: Enter your message number
 From: Shift In-charge, Control Room

Date: 28-Apr-18
 Time: 10:00

Forecast Generation & Load with Actual Generation & Load (27-Apr-2018).



Yours faithfully,
 Pema Lhamo

	MW	Coincidental peak load of Day(Last year):	
Peak Co-incident Generation(27-Apr-2018).	355.70	312.16	27-Apr-17
Peak Co-incident Load(27-Apr-2018).	325.30		
		Maximum Load till date:	
		375.23 MW	24-Feb-18

Telephone: +975-02335631; Fax: +975-02335632; Email: bhutansystemoperator@bpc.bt; www.bpc.bt



ཕྱག་ལུགས་ལྷན་ཁུངས་ལཱ་སྒྲུབ་ལྷན་པོ།

Bhutan Power Corporation Ltd.
Bhutan Power System Operator
Thimphu: Bhutan



Message No.: Enter your message number
From: Shift In-charge, Control Room

Date: 28-Apr-18
Time: 11:54

To
Managing Director, BPC. Email: gemtshering@bpc.bt
Director, O&MD, DGPC. Email: director.omb@drukgreen.com
General Manager, TD, BPC. Email: thinleygyeltshen@bpc.bt
General Manager, DCSD, BPC. Email: sandeeprai@bpc.bt

Sub: Load Generation Balance Report of Today (28-Apr-2018).

Hours (BST)	Forecast		Actual	
	Generation	Load	Generation	Load
0:00	328.80	243.00	339.64	251.35
0:15	328.80	243.10	339.63	253.25
0:30	328.80	240.10	341.13	253.91
0:45	328.80	240.00	341.22	249.32
1:00	328.80	242.00	339.85	246.41
1:15	327.80	244.60	340.47	245.15
1:30	327.80	242.10	341.20	239.84
1:45	327.80	240.30	341.25	237.37
2:00	327.80	241.90	341.25	242.08
2:15	327.80	241.20	340.52	245.15
2:30	327.80	240.50	341.48	245.41
2:45	327.80	237.00	340.50	240.79
3:00	327.80	235.40	341.23	246.50
3:15	329.80	236.60	340.64	231.43
3:30	329.80	237.50	341.30	243.81
3:45	329.80	243.20	340.91	246.29
4:00	329.80	245.00	341.96	244.46
4:15	329.80	244.90	340.94	244.77
4:30	329.80	243.90	340.13	245.64
4:45	329.80	245.40	340.63	248.44
5:00	329.80	247.80	342.52	248.98
5:15	329.80	250.30	340.17	252.59
5:30	329.80	258.30	340.80	260.77
5:45	329.80	273.30	341.13	268.86
6:00	329.80	278.30	340.05	278.42
6:15	339.80	281.00	340.22	278.86
6:30	339.80	283.10	339.95	289.15
6:45	339.80	289.50	340.84	293.34
7:00	339.80	266.40	340.95	288.85
7:15	339.80	242.40	340.22	290.50
7:30	339.80	263.00	340.14	291.11
7:45	339.80	278.70	339.98	281.86
8:00	339.80	274.00	339.46	280.09
8:15	340.80	274.70	343.88	287.15
8:30	332.60	271.40	341.24	277.26
8:45	332.60	267.90	341.41	283.79
9:00	332.60	265.40	338.92	291.38

Yours faithfully,
Pema Lhamo

Coincidental peak load of Day(Last year):	
316.4	28-Apr-17

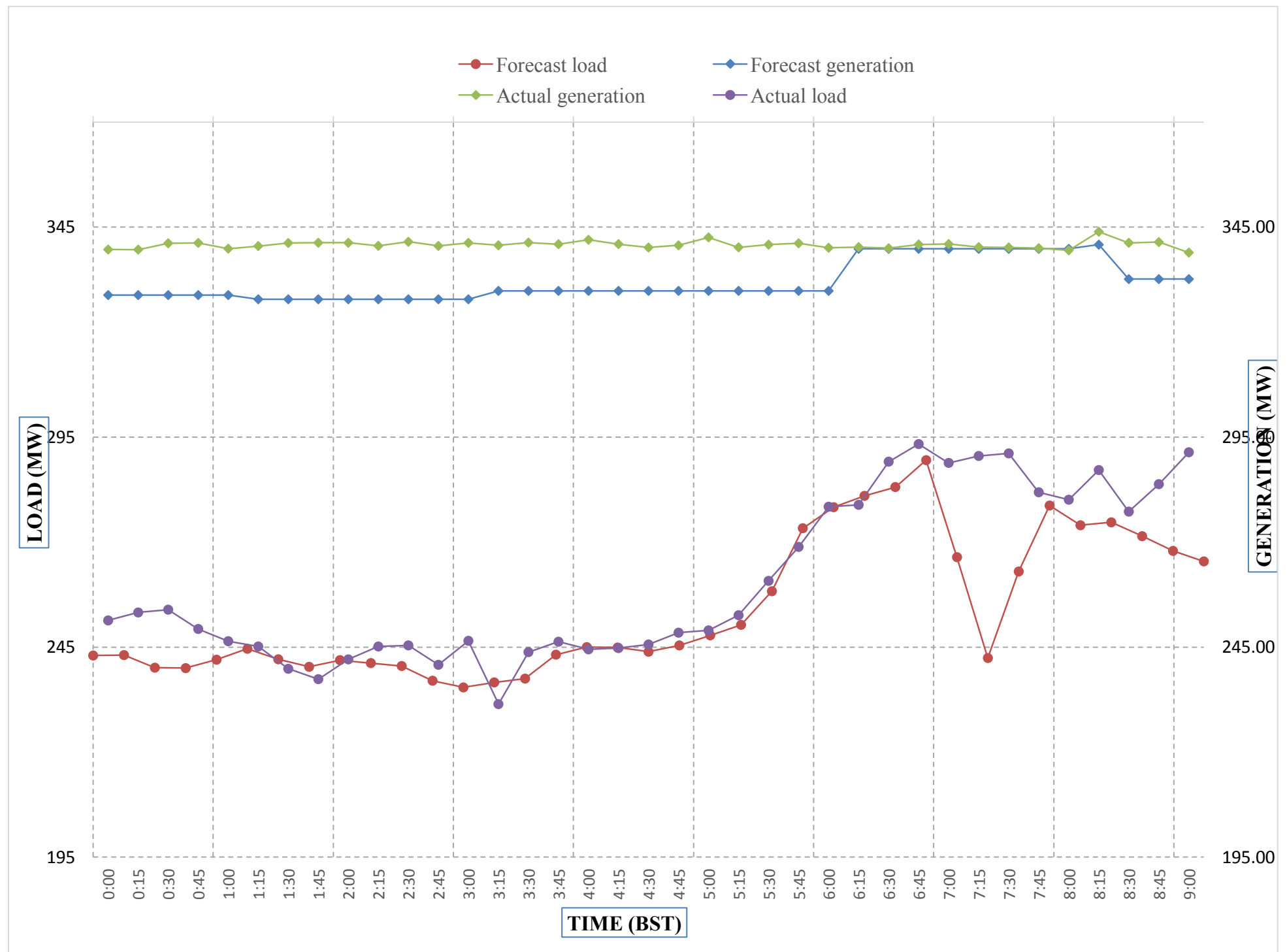
Maximum Load till date:	
375.23 MW	24-Feb-18



Message No.: Enter your message number
From: Shift In-charge, Control Room

Date 28-Apr-18
Time 12:10

Forecast Generation & Load with Actual Generation & Load of Today from 00:00hrs to 09:00hrs(28-Apr-2018).



Yours faithfully
Pema Lhamo

Coincidental peak load of Day(Last)	
316.4	28-Apr-17
Maximum Load till date:	
375.23 MW	24-Feb-18



འབྲུག་གྲོག་ལེ་ལས་འཛིན།
Bhutan Power Corporation Ltd.
Bhutan Power System Operator
 Thimphu: Bhutan



Message No.: Enter your message number **Date:** 28-Apr-18
From: Shift In-charge, Control Room **Time:** 11:54

To
 Managing Director, BPC. Email: gemtshering@bpc.bt
 Director, O&MD, DGPC. Email: director.umd@drukgreen.com
 General Manager, TD, BPC. Email: ktobgye@bpc.bt
 Advisor, BPC. Email: bharattamang@bpc.bt

Sub: Load Generation Balance Report of Tomorrow (29-Apr-2018).

Hours (BST)	Forecast		Hours (BST)	Forecast	
	Generation	Load		Generation	Load
0:00	342.73	216.86	12:00	323.12	260.05
0:15	342.44	216.66	12:15	324.74	258.65
0:30	342.02	214.36	12:30	324.30	258.40
0:45	345.08	216.28	12:45	323.81	255.04
1:00	341.11	209.11	13:00	324.47	244.30
1:15	343.34	212.41	13:15	290.80	244.35
1:30	342.12	210.18	13:30	306.93	249.38
1:45	344.98	207.76	13:45	324.52	254.99
2:00	344.15	213.15	14:00	324.87	258.48
2:15	344.03	215.88	14:15	333.09	266.88
2:30	345.95	207.22	14:30	332.66	274.10
2:45	346.41	213.30	14:45	333.42	266.74
3:00	344.20	212.51	15:00	332.45	262.58
3:15	342.26	213.15	15:15	333.01	269.21
3:30	336.98	215.73	15:30	332.98	266.60
3:45	338.44	214.50	15:45	332.93	273.70
4:00	338.17	222.62	16:00	333.35	262.05
4:15	337.77	222.73	16:15	333.76	273.05
4:30	337.65	227.54	16:30	332.24	276.45
4:45	337.88	217.63	16:45	332.26	275.51
5:00	337.73	230.86	17:00	333.33	272.91
5:15	337.27	238.43	17:15	332.83	272.69
5:30	353.57	249.72	17:30	333.16	280.27
6:45	354.24	247.82	17:45	332.13	279.76
6:00	355.27	270.27	18:00	332.89	282.79
6:15	355.70	268.55	18:15	332.66	289.57
6:30	346.42	272.77	18:30	332.48	302.86
6:45	346.72	282.70	18:45	333.55	290.36
7:00	347.77	286.51	19:00	329.84	311.19
7:15	341.56	282.84	19:15	331.00	325.30
7:30	342.95	280.02	19:30	339.01	319.95
7:45	343.09	269.33	19:45	338.24	316.05
8:00	343.06	264.45	20:00	351.70	321.21
8:15	327.52	270.13	20:15	328.76	306.34
8:30	316.55	253.74	20:30	346.95	310.63
8:45	317.03	250.05	20:45	341.93	303.66
9:00	316.93	234.72	21:00	337.06	293.89
9:15	316.73	250.51	21:15	335.50	292.54
9:30	316.94	253.55	21:30	334.59	288.30
9:45	316.88	256.68	21:45	334.16	280.31
10:00	317.29	254.71	22:00	334.70	268.88
10:15	321.91	252.99	22:15	330.75	265.77
10:30	323.55	257.59	22:30	340.63	264.58
10:45	280.62	255.18	22:45	340.34	262.41
11:00	342.68	258.16	23:00	340.85	262.11
11:15	332.40	257.98	23:15	340.45	249.71
11:30	322.09	259.09	23:30	339.91	257.46
11:45	322.63	254.50	23:45	339.92	250.01

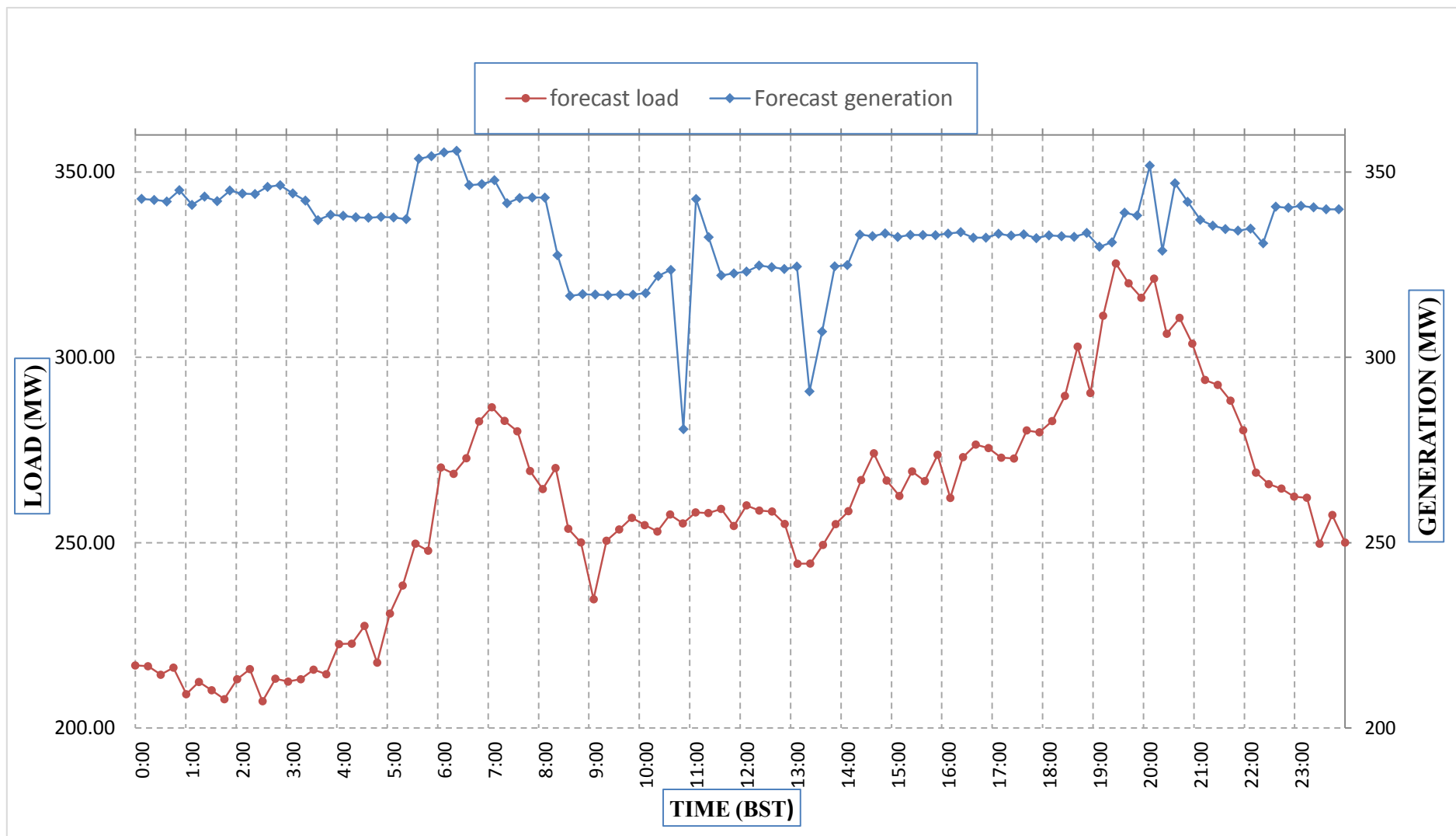
Yours faithfully,
 Pema Lhamo



Message No.: Enter your message number
From: Shift In-charge, Control Room

Date: 28-Apr-18
Time: 11:54

Forecast Generation & Load Forecast for Tomorrow (29-Apr-2018).



Yours faithfully,
Pema Lhamo

	MW
Scheduled Peak Generation(29-Apr-2018).	355.70
Forecast Peak Load(29-Apr-2018).	325.30



ཕྱག་ཇུག་ལོ་ལོ་ལོ་།།

Bhutan Power Corporation Ltd.
Bhutan Power System Operator
Thimphu: Bhutan



Message No.:

Enter your message number

Date: 28-Apr-18

From:

Shift In-charge, Control Room

Time: 11:54

To

Managing Director, BPC. Email: gemtshering@bpc.bt
Director, O&MD, DGPC. Email: director.umd@drukgreen.com
General Manager, TD, BPC. Email: ktobgye@bpc.bt
Advisor, BPC. Email: bharattamang@bpc.bt

Sub:

Forecast Generation and Actual Generation of Dagachhu (27-Apr-2018).

Hours (BST)	Actual Frequency	Forecast Generation	Actual Generation	Hours (BST)	Actual Frequency	Forecast Generation	Actual Generation
0:00	0.00	0.00	0.00	12:00	0.00	0.00	0.00
0:15	0.00	0.00	0.00	12:15	0.00	0.00	0.00
0:30	0.00	0.00	0.00	12:30	0.00	0.00	0.00
0:45	0.00	0.00	0.00	12:45	0.00	0.00	0.00
1:00	0.00	0.00	0.00	13:00	0.00	0.00	0.00
1:15	0.00	0.00	0.00	13:15	0.00	0.00	0.00
1:30	0.00	0.00	0.00	13:30	0.00	0.00	0.00
1:45	0.00	0.00	0.00	13:45	0.00	0.00	0.00
2:00	0.00	0.00	0.00	14:00	0.00	0.00	0.00
2:15	0.00	0.00	0.00	14:15	0.00	0.00	0.00
2:30	0.00	0.00	0.00	14:30	0.00	0.00	0.00
2:45	0.00	0.00	0.00	14:45	0.00	0.00	0.00
3:00	0.00	0.00	0.00	15:00	0.00	0.00	0.00
3:15	0.00	0.00	0.00	15:15	0.00	0.00	0.00
3:30	0.00	0.00	0.00	15:30	0.00	0.00	0.00
3:45	0.00	0.00	0.00	15:45	0.00	0.00	0.00
4:00	0.00	0.00	0.00	16:00	0.00	0.00	0.00
4:15	0.00	0.00	0.00	16:15	0.00	0.00	0.00
4:30	0.00	0.00	0.00	16:30	0.00	0.00	0.00
4:45	0.00	0.00	0.00	16:45	0.00	0.00	0.00
5:00	0.00	0.00	0.00	17:00	0.00	0.00	0.00
5:15	0.00	0.00	0.00	17:15	0.00	0.00	0.00
5:30	0.00	0.00	0.00	17:30	0.00	0.00	0.00
6:45	0.00	0.00	0.00	17:45	0.00	0.00	0.00
6:00	0.00	0.00	0.00	18:00	0.00	0.00	0.00
6:15	0.00	0.00	0.00	18:15	0.00	0.00	0.00
6:30	0.00	0.00	0.00	18:30	0.00	0.00	0.00
6:45	0.00	0.00	0.00	18:45	0.00	0.00	0.00
7:00	0.00	0.00	0.00	19:00	0.00	0.00	0.00
7:15	0.00	0.00	0.00	19:15	0.00	0.00	0.00
7:30	0.00	0.00	0.00	19:30	0.00	0.00	0.00
7:45	0.00	0.00	0.00	19:45	0.00	0.00	0.00
8:00	0.00	0.00	0.00	20:00	0.00	0.00	0.00
8:15	0.00	0.00	0.00	20:15	0.00	0.00	0.00
8:30	0.00	0.00	0.00	20:30	0.00	0.00	0.00
8:45	0.00	0.00	0.00	20:45	0.00	0.00	0.00
9:00	0.00	0.00	0.00	21:00	0.00	0.00	0.00
9:15	0.00	0.00	0.00	21:15	0.00	0.00	0.00
9:30	0.00	0.00	0.00	21:30	0.00	0.00	0.00
9:45	0.00	0.00	0.00	21:45	0.00	0.00	0.00
10:00	0.00	0.00	0.00	22:00	0.00	0.00	0.00
10:15	0.00	0.00	0.00	22:15	0.00	0.00	0.00
10:30	0.00	0.00	0.00	22:30	0.00	0.00	0.00
10:45	0.00	0.00	0.00	22:45	0.00	0.00	0.00
11:00	0.00	0.00	0.00	23:00	0.00	0.00	0.00
11:15	0.00	0.00	0.00	23:15	0.00	0.00	0.00
11:30	0.00	0.00	0.00	23:30	0.00	0.00	0.00
11:45	0.00	0.00	0.00	23:45	0.00	0.00	0.00

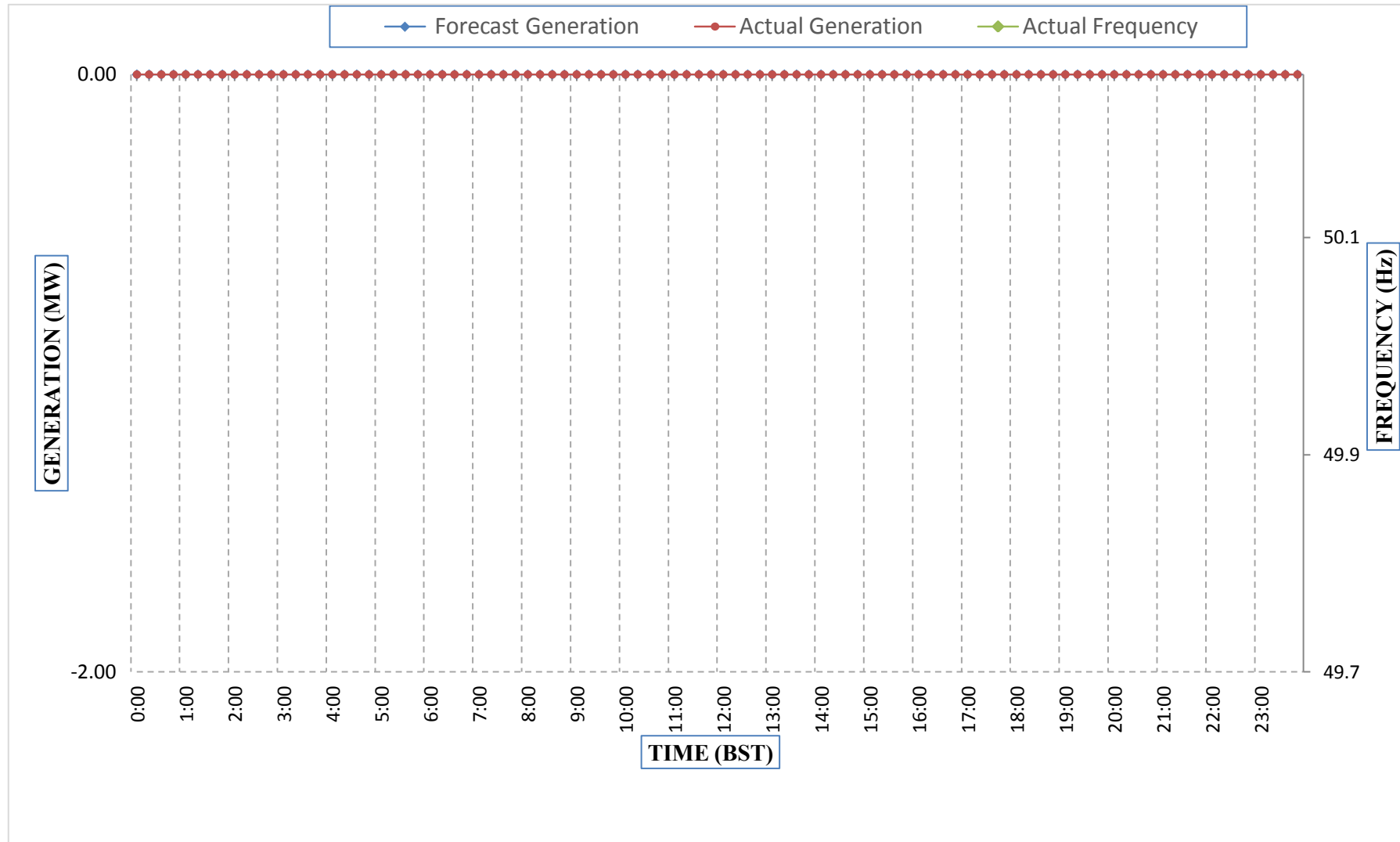
Yours faithfully,
Pema Lhamo



Message No.: Enter your message number
 From: Shift In-charge, Control Room

Date: 28-Apr-18
 Time: 11:54

Forecast Generation & Actual Generation of Dagachhu(27-Apr-2018).



Yours faithfully,
 Pema Lhamo