



འབྲུག་རྒྱལ་ཁོག་སྲིལ་ལམ་འཛིན།

Bhutan Power Corporation Ltd.
Bhutan Power System Operator
Thimphu: Bhutan



Message No.: Enter your message number
From: Shift In-charge, Control Room

Date: 26-Apr-18
Time: 8:11

To
Managing Director, BPC. Email: gemtshering@bpc.bt
Director, O&MD, DGPC. Email: director.umd@drukgreen.com
General Manager, TD, BPC. Email: ktobgye@bpc.bt
General Manager, DCSD, BPC. Email: sandeeprai@bpc.bt

Sub: **Load Generation Balance Report of Yesterday (25-Apr-2018).**

Hours (BST)	Forecast		Actual		Hours (BST)	Forecast		Actual	
	Generation	Load	Generation	Load		Generation	Load	Generation	Load
0:00	393.40	248.10	354.44	238.39	12:00	393.40	268.50	364.59	280.81
0:15	393.40	248.50	354.50	236.43	12:15	393.40	265.50	364.82	283.34
0:30	393.40	247.20	354.22	234.23	12:30	393.40	263.60	364.73	283.95
0:45	393.40	245.20	358.09	233.79	12:45	393.40	262.70	360.53	273.33
1:00	393.40	244.20	356.36	236.99	13:00	393.40	259.80	363.90	270.98
1:15	393.40	246.20	361.47	245.90	13:15	393.40	258.50	364.24	272.34
1:30	393.40	247.00	361.27	247.03	13:30	393.40	249.80	364.51	271.45
1:45	393.40	249.10	381.62	234.93	13:45	393.40	254.70	363.32	264.77
2:00	393.40	247.90	386.30	241.55	14:00	393.40	255.20	362.42	264.77
2:15	393.40	248.10	386.41	242.03	14:15	393.40	256.00	362.64	264.77
2:30	393.40	246.60	386.37	240.64	14:30	393.40	258.00	362.49	264.77
2:45	393.40	241.90	384.40	240.04	14:45	393.40	259.10	362.38	264.77
3:00	393.40	240.30	386.04	231.36	15:00	393.40	257.90	362.31	264.77
3:15	393.40	242.20	385.98	232.04	15:15	393.40	256.80	363.66	264.77
3:30	393.40	245.30	386.06	232.26	15:30	393.40	256.20	363.63	264.77
3:45	393.40	245.30	385.54	243.52	15:45	393.40	256.30	358.67	264.77
4:00	393.40	245.50	383.06	245.02	16:00	393.40	260.80	354.70	264.77
4:15	393.40	245.50	383.21	245.77	16:15	393.40	263.00	353.89	264.77
4:30	393.40	243.60	383.04	246.06	16:30	393.40	262.30	353.89	264.77
4:45	393.40	244.70	385.70	254.85	16:45	393.40	265.30	353.12	264.77
5:00	393.40	249.10	382.71	252.31	17:00	393.40	266.50	353.78	264.77
5:15	393.40	255.70	383.38	250.36	17:15	393.40	268.40	353.29	264.77
5:30	393.40	266.70	383.52	257.07	17:30	393.40	277.10	353.29	264.77
5:45	393.40	276.30	379.55	280.80	17:45	393.40	278.80	361.83	264.77
6:00	393.40	282.30	379.88	281.71	18:00	393.40	285.10	361.81	243.84
6:15	393.40	287.60	379.42	282.56	18:15	393.40	290.90	362.02	253.05
6:30	393.40	290.00	385.71	279.07	18:30	393.40	293.70	361.80	253.14
6:45	393.40	290.50	381.80	290.09	18:45	393.40	304.70	361.97	281.63
7:00	393.40	287.50	382.30	276.06	19:00	393.40	311.30	362.41	293.40
7:15	393.40	288.00	382.30	276.06	19:15	393.40	312.30	362.07	294.16
7:30	393.40	282.30	389.56	285.16	19:30	393.40	306.60	360.90	291.87
7:45	393.40	280.70	393.57	285.58	19:45	393.40	306.60	356.02	290.02
8:00	393.40	274.00	392.83	280.37	20:00	393.40	302.00	356.80	292.60
8:15	393.40	274.40	392.81	278.46	20:15	393.40	302.00	355.91	291.07
8:30	393.40	272.40	392.85	277.74	20:30	393.40	299.40	357.27	292.44
8:45	393.40	271.80	392.68	262.84	20:45	393.40	290.00	356.75	273.38
9:00	393.40	269.00	393.93	267.69	21:00	393.40	287.30	349.56	274.81
9:15	393.40	269.50	393.71	267.67	21:15	393.40	282.60	349.56	274.81
9:30	393.40	269.10	393.84	267.38	21:30	393.40	281.90	349.85	266.71
9:45	393.40	268.90	394.12	258.36	21:45	393.40	274.90	349.98	266.58
10:00	393.40	266.40	389.57	262.47	22:00	393.40	268.60	350.84	253.71
10:15	393.40	261.70	391.84	261.17	22:15	393.40	263.00	345.71	252.13
10:30	393.40	260.20	391.73	260.45	22:30	393.40	259.00	345.72	250.79
10:45	393.40	260.60	393.38	267.06	22:45	393.40	257.40	345.84	245.60
11:00	393.40	262.50	390.30	268.46	23:00	393.40	254.80	345.91	244.74
11:15	393.40	262.90	390.40	272.95	23:15	393.40	254.90	345.79	245.82
11:30	393.40	263.90	390.27	272.93	23:30	393.40	252.10	345.84	238.40
11:45	393.40	268.30	362.52	280.31	23:45	393.40	252.40	345.70	244.71

Yours faithfully
Tshering Choden

Coincidental peak load of Day(Last year):	
331.62	25-Apr-17
Maximum Load till date:	
375.23 MW	24-Feb-18



འབྲུག་གྲོག་མེ་ལས་འཛིན།

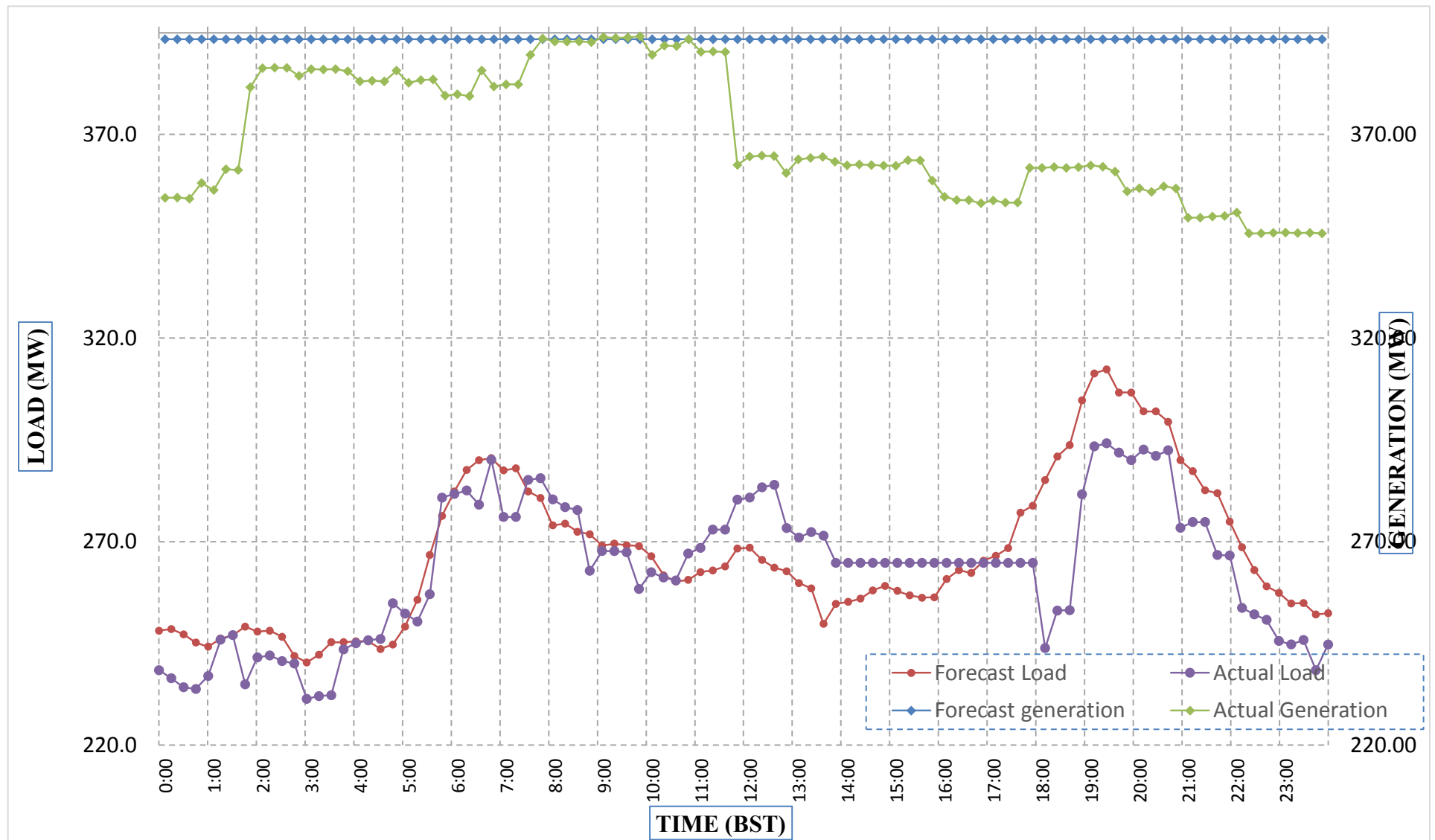
Bhutan Power Corporation Ltd.
 Bhutan Power System Operator
 Thimphu: Bhutan



Message No.: Enter your message number
 From: Shift In-charge, Control Room

Date: 26-Apr-18
 Time: 10:00

Forecast Generation & Load with Actual Generation & Load (25-Apr-2018).



Yours faithfully,
 Tshering Choden

	MW	Coincidental peak load of Day(Last year):	
Peak Co-incident Generation(25-Apr-2018).	394.12	331.62	25-Apr-17
Peak Co-incident Load(25-Apr-2018).	294.16		
		Maximum Load till date:	
		375.23 MW	24-Feb-18

Telephone: +975-02335631; Fax: +975-02335632; Email: bhutansystemoperator@bpc.bt; www.bpc.bt



ཕྱག་ལུགས་ལྷན་ཁག་ལེ་ལས་འཛིན།

Bhutan Power Corporation Ltd.
Bhutan Power System Operator
Thimphu: Bhutan



Message No.: Enter your message number
From: Shift In-charge, Control Room

Date: 26-Apr-18
Time: 8:11

To
Managing Director, BPC. Email: gemtshering@bpc.bt
Director, O&MD, DGPC. Email: director.umd@drukgreen.com
General Manager, TD, BPC. Email: thinleygyeltshen@bpc.bt
General Manager, DCSD, BPC. Email: sandeeprai@bpc.bt

Sub: Load Generation Balance Report of Today (26-Apr-2018).

Hours (BST)	Forecast		Actual	
	Generation	Load	Generation	Load
0:00	378.50	248.50	345.47	237.05
0:15	378.50	249.10	345.57	236.47
0:30	378.50	247.30	345.51	235.84
0:45	378.50	245.50	344.38	227.37
1:00	378.50	245.10	345.82	239.59
1:15	378.50	247.00	345.82	240.38
1:30	378.50	242.80	345.63	240.31
1:45	378.50	245.70	345.30	230.38
2:00	378.50	245.00	345.34	239.55
2:15	378.50	244.00	346.09	237.69
2:30	378.50	242.00	346.35	237.87
2:45	378.50	241.30	346.09	229.62
3:00	378.50	240.90	346.02	220.92
3:15	378.50	242.30	345.88	227.44
3:30	378.50	244.80	345.85	227.61
3:45	378.50	245.60	364.69	239.67
4:00	378.50	245.00	364.55	247.91
4:15	378.50	244.80	364.41	248.53
4:30	378.50	243.10	364.31	248.54
4:45	378.50	243.30	364.77	246.64
5:00	378.50	251.70	364.55	237.04
5:15	378.50	256.00	364.52	238.60
5:30	378.50	268.00	364.51	239.98
5:45	378.50	277.80	364.38	263.89
6:00	378.50	280.60	364.85	276.52
6:15	387.70	285.10	364.67	277.10
6:30	387.70	289.70	364.85	277.38
6:45	387.70	290.10	360.32	295.52
7:00	387.70	288.00	360.08	290.66
7:15	387.70	288.30	360.08	290.66
7:30	387.70	281.70	360.08	290.66
7:45	387.70	279.60	359.62	279.91
8:00	387.70	273.40	359.92	274.79
8:15	387.70	273.80	360.17	273.39
8:30	387.70	269.40	360.05	273.46
8:45	387.70	268.40	361.69	264.14
9:00	387.70	265.00	362.74	266.04

Yours faithfully,
Tshering Choden

Coincidental peak load of Day(Last year):	
323.93	26-Apr-17

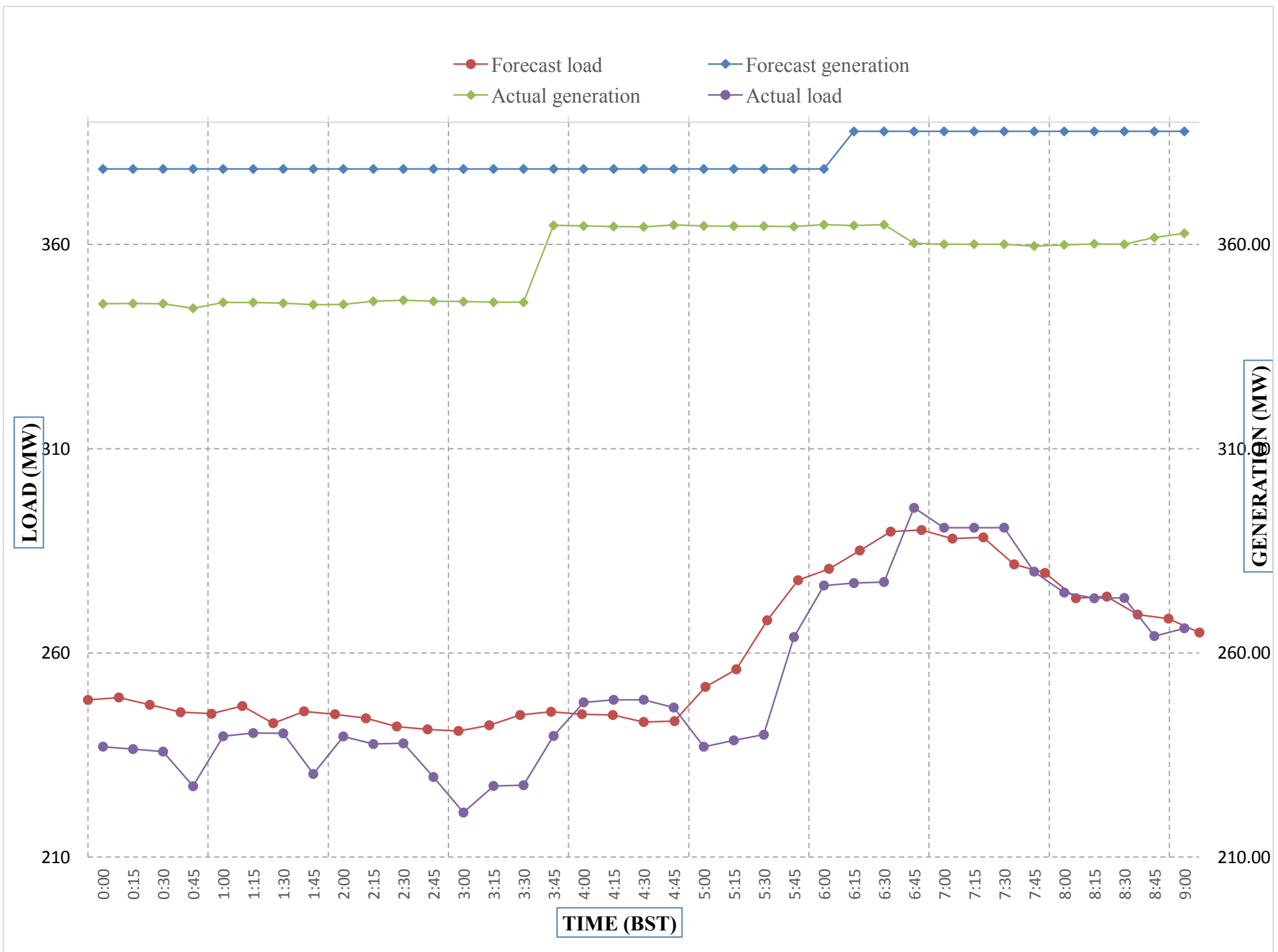
Maximum Load till date:	
375.23 MW	24-Feb-18



Message No.: Enter your message number
 From: Shift In-charge, Control Room

Date: 26-Apr-18
 Time: 10:47

Forecast Generation & Load with Actual Generation & Load of Today from 00:00hrs to 09:00hrs(26-Apr-2018).



Yours faithfully
 Tshering Choden

Coincidental peak load of Day(Last	
323.93	26-Apr-17
Maximum Load till date:	
375.23 MW	24-Feb-18



འབྲུག་གྲོག་མོ་ལས་འཛིན།
Bhutan Power Corporation Ltd.
Bhutan Power System Operator
 Thimphu: Bhutan



Message No.: Enter your message number **Date:** 26-Apr-18
From: Shift In-charge, Control Room **Time:** 8:11

To
 Managing Director, BPC. Email: gemtshering@bpc.bt
 Director, O&MD, DGPC. Email: director.umd@drukgreen.com
 General Manager, TD, BPC. Email: ktobgye@bpc.bt
 Advisor, BPC. Email: bharattamang@bpc.bt

Sub: Load Generation Balance Report of Tomorrow (27-Apr-2018).

Hours (BST)	Forecast		Hours (BST)	Forecast	
	Generation	Load		Generation	Load
0:00	369.10	245.50	12:00	360.90	260.60
0:15	369.10	245.30	12:15	360.90	259.90
0:30	369.10	242.20	12:30	360.90	260.70
0:45	369.10	242.50	12:45	360.90	258.10
1:00	369.10	242.70	13:00	360.90	256.80
1:15	369.10	246.40	13:15	360.90	252.20
1:30	369.10	243.20	13:30	360.90	249.50
1:45	369.10	243.10	13:45	360.90	250.90
2:00	369.10	243.60	14:00	360.90	214.00
2:15	369.10	242.80	14:15	360.90	214.60
2:30	369.10	241.00	14:30	360.90	216.10
2:45	369.10	239.70	14:45	360.90	223.20
3:00	369.10	237.80	15:00	360.90	226.20
3:15	369.10	239.40	15:15	360.90	225.90
3:30	369.10	240.80	15:30	360.90	223.50
3:45	369.10	244.70	15:45	360.90	225.40
4:00	369.10	244.60	16:00	360.90	231.10
4:15	369.10	244.50	16:15	360.90	234.00
4:30	369.10	243.20	16:30	360.90	234.80
4:45	369.10	245.70	16:45	360.90	232.70
5:00	369.10	251.60	17:00	360.90	241.60
5:15	369.10	254.60	17:15	360.90	243.30
5:30	369.10	265.20	17:30	360.90	252.80
6:45	369.10	277.00	17:45	360.90	259.80
6:00	369.10	280.70	18:00	369.10	270.20
6:15	369.10	284.00	18:15	369.10	275.60
6:30	369.10	287.20	18:30	369.10	280.20
6:45	369.10	290.00	18:45	369.10	296.20
7:00	369.10	284.90	19:00	369.10	304.70
7:15	369.10	267.80	19:15	369.10	305.60
7:30	369.10	282.40	19:30	369.10	301.80
7:45	369.10	281.30	19:45	369.10	300.10
8:00	360.90	274.90	20:00	369.10	295.50
8:15	360.90	275.00	20:15	369.10	294.70
8:30	360.90	271.20	20:30	369.10	293.60
8:45	360.90	268.80	20:45	369.10	284.80
9:00	360.90	265.60	21:00	369.10	281.40
9:15	360.90	265.70	21:15	369.10	260.80
9:30	360.90	263.80	21:30	369.10	274.60
9:45	360.90	257.90	21:45	369.10	270.30
10:00	360.90	256.00	22:00	369.10	248.10
10:15	360.90	254.60	22:15	369.10	260.00
10:30	360.90	253.10	22:30	369.10	258.30
10:45	360.90	254.40	22:45	369.10	253.20
11:00	360.90	253.30	23:00	369.10	251.10
11:15	360.90	255.50	23:15	369.10	251.30
11:30	360.90	258.40	23:30	369.10	246.30
11:45	360.90	262.50	23:45	369.10	247.80

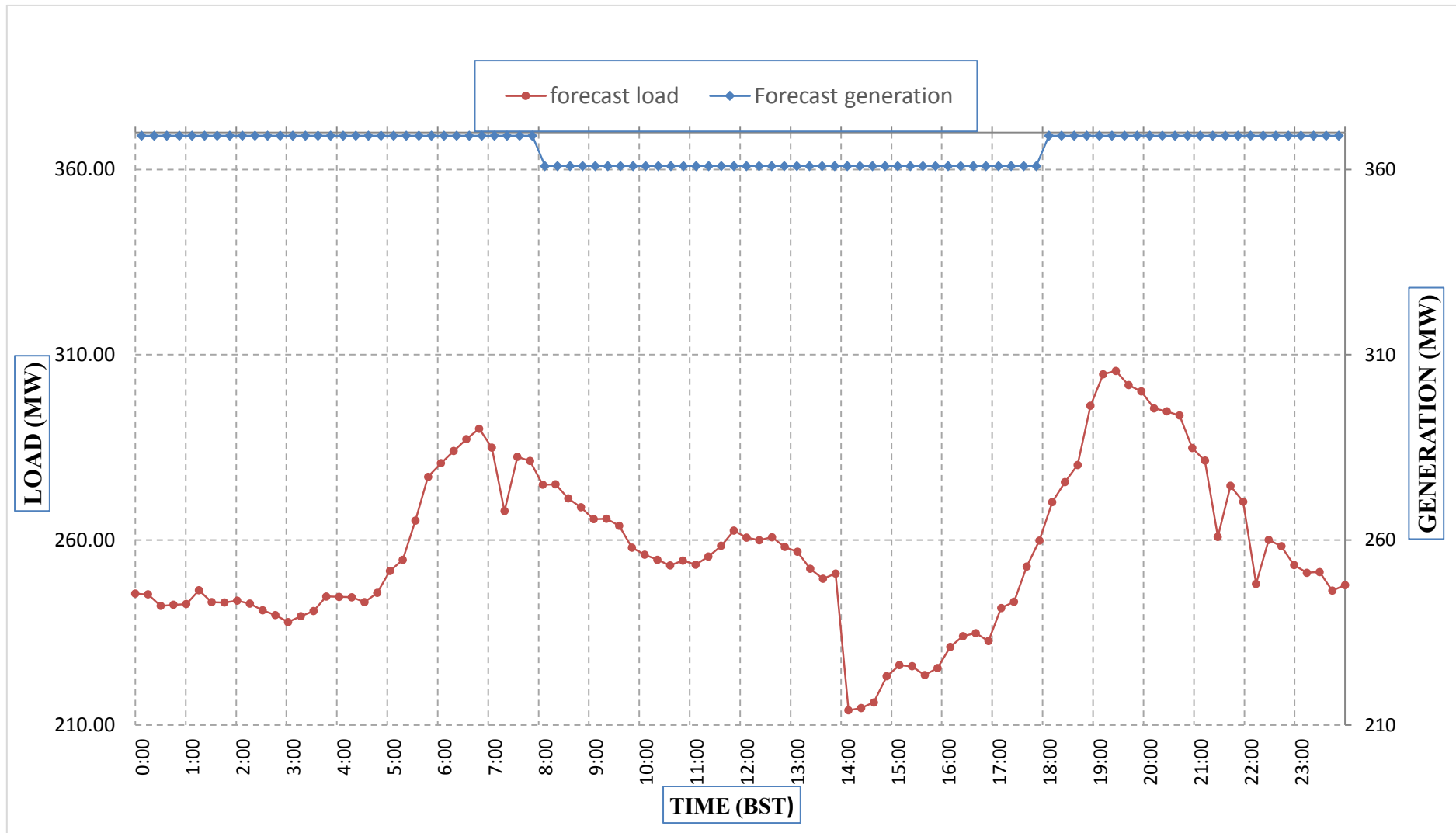
Yours faithfully,
 Tshering Choden



Message No.: Enter your message number
 From: Shift In-charge, Control Room

Date: 26-Apr-18
 Time: 8:11

Forecast Generation & Load Forecast for Tomorrow (27-Apr-2018).



Yours faithfully,
 Tshering Choden

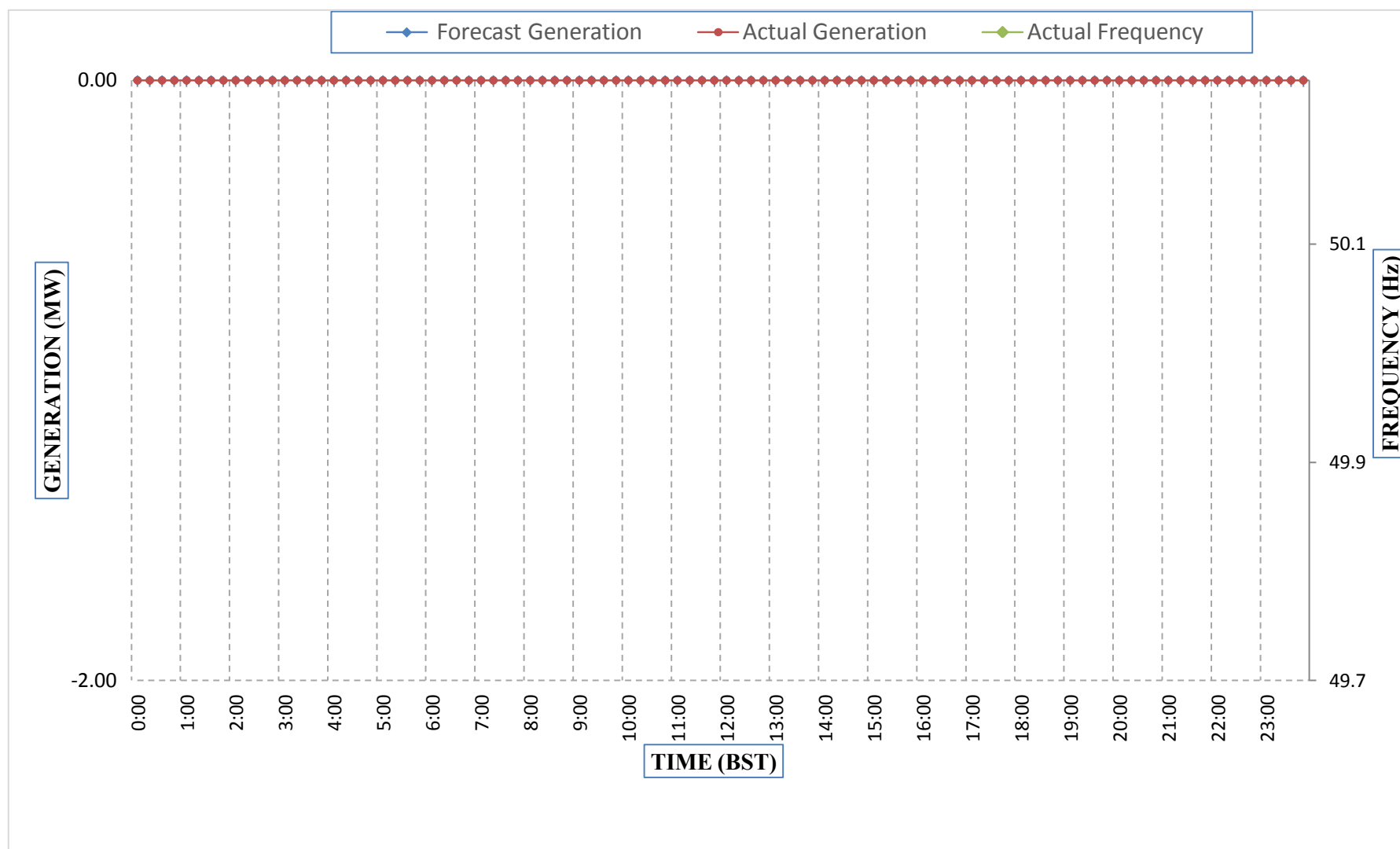
	MW
Scheduled Peak Generation(27-Apr-2018).	369.10
Forecast Peak Load(27-Apr-2018).	305.60



Message No.: Enter your message number
 From: Shift In-charge, Control Room

Date: 26-Apr-18
 Time: 8:11

Forecast Generation & Actual Generation of Dagachhu(25-Apr-2018).



Yours faithfully,
 Tshering Choden