



འབྲུག་རྒྱུ་མེ་ལམ་འཛིན།

Bhutan Power Corporation Ltd.
Bhutan Power System Operator
Thimphu: Bhutan



Message No.: Enter your message number
From: Shift In-charge, Control Room

Date: 21-Apr-18
Time: 11:12

To
Managing Director, BPC. Email: gemtshering@bpc.bt
Director, O&MD, DGPC. Email: director.umd@drukgreen.com
General Manager, TD, BPC. Email: ktobgye@bpc.bt
General Manager, DCSD, BPC. Email: sandeeprai@bpc.bt

Sub: **Load Generation Balance Report of Yesterday (20-Apr-2018).**

Hours (BST)	Forecast		Actual		Hours (BST)	Forecast		Actual	
	Generation	Load	Generation	Load		Generation	Load	Generation	Load
0:00	342.90	260.20	352.30	266.84	12:00	344.90	287.20	338.19	269.30
0:15	342.90	258.70	352.41	262.93	12:15	343.90	285.90	321.84	274.03
0:30	342.90	256.70	350.12	257.84	12:30	343.90	284.20	322.36	265.16
0:45	342.90	259.60	349.16	253.15	12:45	343.90	277.30	337.08	269.11
1:00	342.90	261.60	349.13	247.06	13:00	343.90	273.30	340.36	263.63
1:15	344.90	262.80	349.27	250.39	13:15	342.90	274.10	336.61	254.97
1:30	344.90	262.30	348.45	246.34	13:30	342.90	274.50	337.78	255.62
1:45	344.90	264.50	347.54	241.23	13:45	342.90	274.80	341.04	249.08
2:00	344.90	260.60	347.50	250.51	14:00	342.90	271.20	349.73	262.12
2:15	343.90	261.00	342.93	246.97	14:15	343.90	269.70	342.12	260.14
2:30	343.90	261.80	342.57	248.67	14:30	343.90	273.10	337.60	260.08
2:45	343.90	257.80	340.91	242.14	14:45	343.90	273.10	344.63	258.43
3:00	343.90	259.30	340.52	240.20	15:00	343.90	272.20	354.20	258.89
3:15	345.90	256.20	321.34	241.61	15:15	342.90	265.10	359.02	259.09
3:30	345.90	256.70	320.90	242.08	15:30	342.90	263.90	370.63	264.84
3:45	345.90	255.90	320.23	243.02	15:45	342.90	269.40	358.84	251.48
4:00	345.90	258.40	319.02	243.41	16:00	342.90	277.10	359.80	248.42
4:15	343.90	257.70	320.19	243.08	16:15	341.90	282.40	350.18	250.56
4:30	343.90	256.10	318.63	243.57	16:30	341.90	283.10	352.30	262.55
4:45	343.90	261.50	317.56	245.33	16:45	341.90	288.60	351.51	260.80
5:00	343.90	260.40	318.54	242.87	17:00	341.90	288.50	349.55	267.46
5:15	344.90	266.40	318.72	241.62	17:15	360.20	293.30	351.21	270.27
5:30	344.90	276.70	319.49	249.97	17:30	360.20	292.30	350.94	273.41
5:45	344.90	285.90	319.79	254.36	17:45	360.20	295.10	415.54	279.41
6:00	344.90	290.80	319.34	260.97	18:00	360.20	305.10	414.66	286.28
6:15	352.00	297.50	318.91	266.37	18:15	358.10	306.30	423.48	296.36
6:30	352.00	303.40	320.10	272.50	18:30	358.10	311.70	420.75	298.23
6:45	352.00	303.40	318.94	273.69	18:45	358.10	320.00	421.59	309.16
7:00	351.00	300.20	319.41	279.00	19:00	364.20	327.00	422.16	299.66
7:15	354.00	298.20	318.54	277.04	19:15	359.10	329.40	429.06	300.89
7:30	354.00	292.90	318.14	275.05	19:30	359.10	328.60	480.87	313.13
7:45	354.00	291.10	319.50	277.35	19:45	359.10	324.60	479.97	305.02
8:00	354.00	284.70	319.05	270.07	20:00	359.10	320.40	481.65	305.84
8:15	352.00	279.50	320.31	267.55	20:15	359.10	321.00	480.70	302.51
8:30	352.00	277.20	320.46	268.91	20:30	359.10	312.70	480.43	300.66
8:45	352.00	278.00	318.40	266.71	20:45	359.10	291.10	481.38	294.70
9:00	352.00	277.90	320.12	264.14	21:00	359.10	288.90	480.27	293.94
9:15	351.00	278.00	320.97	268.51	21:15	342.90	292.60	467.70	285.48
9:30	351.00	279.50	322.05	265.58	21:30	342.90	297.30	472.37	275.94
9:45	351.00	278.50	321.07	264.76	21:45	342.90	287.20	471.79	263.60
10:00	351.00	276.20	322.42	266.84	22:00	342.90	283.50	471.71	251.42
10:15	343.90	273.70	324.13	265.38	22:15	342.90	278.80	475.80	245.21
10:30	343.90	279.40	351.82	260.81	22:30	342.90	273.40	522.58	243.21
10:45	343.90	277.50	338.84	261.78	22:45	342.90	267.00	523.13	245.67
11:00	343.90	277.50	340.30	263.86	23:00	342.90	267.40	523.73	233.93
11:15	344.90	280.50	342.39	260.48	23:15	341.90	268.80	523.70	230.77
11:30	344.90	278.50	335.31	258.69	23:30	341.90	266.00	522.70	228.29
11:45	344.90	284.00	336.20	261.77	23:45	341.90	265.40	517.97	227.60

Yours faithfully
Pema Lhamo

Coincidental peak load of Day(Last year):	
311.1	20-Apr-17
Maximum Load till date:	
375.23 MW	24-Feb-18



འབྲུག་གྲོག་མེ་ལས་འཛིན།

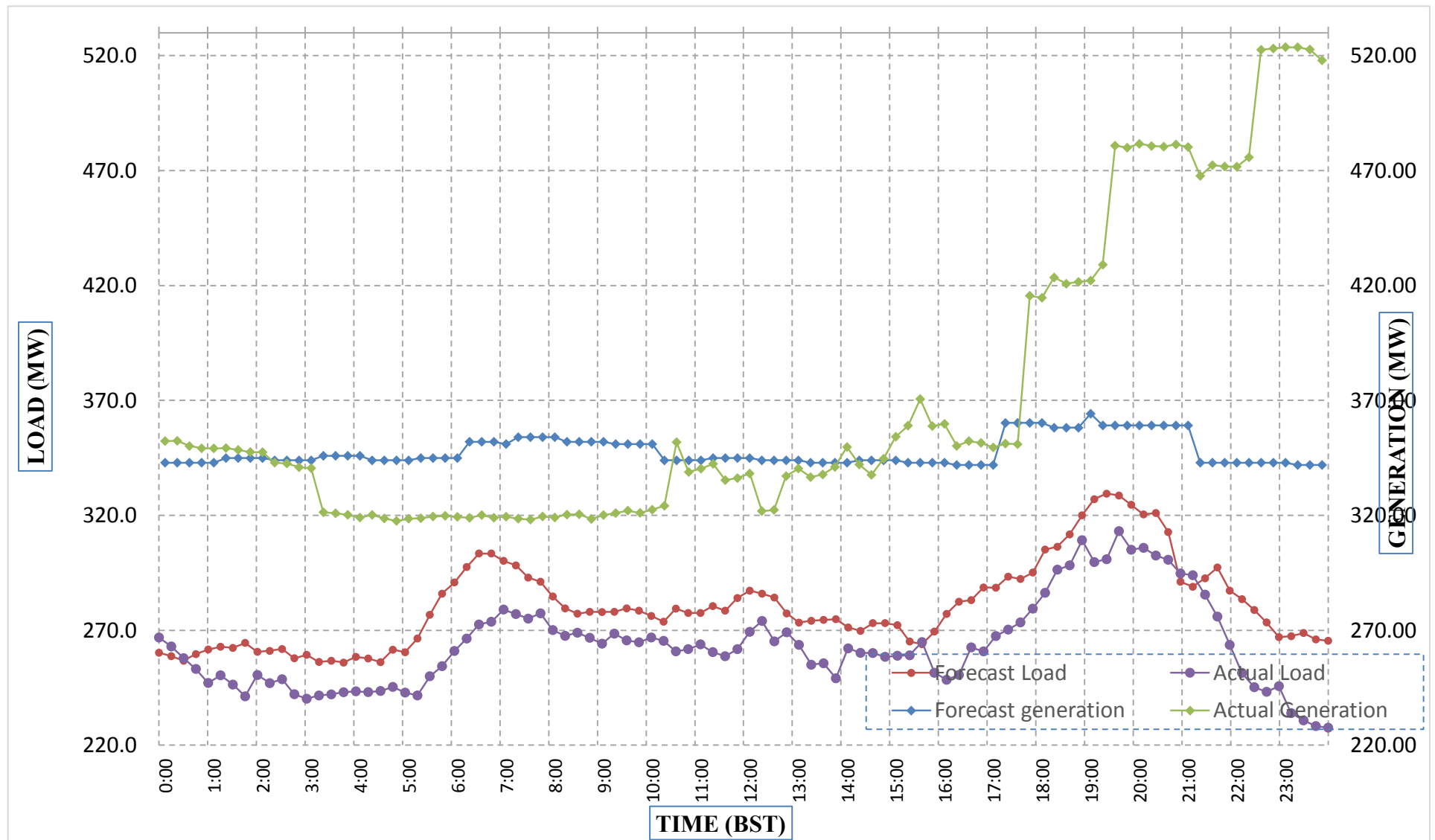
Bhutan Power Corporation Ltd.
 Bhutan Power System Operator
 Thimphu: Bhutan



Message No.: Enter your message number
 From: Shift In-charge, Control Room

Date: 21-Apr-18
 Time: 11:12

Forecast Generation & Load with Actual Generation & Load (20-Apr-2018).



Yours faithfully,
 Pema Lhamo

	MW	Coincidental peak load of Day(Last year):	
Peak Co-incident Generation(20-Apr-2018).	523.73	311.1	20-Apr-17
Peak Co-incident Load(20-Apr-2018).	313.13		
		Maximum Load till date:	
		375.23 MW	24-Feb-18

Telephone: +975-02335631; Fax: +975-02335632; Email: bhutansystemoperator@bpc.bt; www.bpc.bt



ཕྱག་ལུགས་ལྷན་ཁུངས་ལྷན་ཁུངས་།

Bhutan Power Corporation Ltd.
Bhutan Power System Operator
Thimphu: Bhutan



Message No.: Enter your message number
From: Shift In-charge, Control Room

Date: 21-Apr-18
Time: 11:12

To
Managing Director, BPC. Email: gemtshering@bpc.bt
Director, O&MD, DGPC. Email: director.umd@drukgreen.com
General Manager, TD, BPC. Email: thinleygyeltshen@bpc.bt
General Manager, DCSD, BPC. Email: sandeeprai@bpc.bt

Sub: Load Generation Balance Report of Today (21-Apr-2018).

Hours (BST)	Forecast		Actual	
	Generation	Load	Generation	Load
0:00	334.90	259.60	520.94	223.90
0:15	334.90	259.70	518.28	225.00
0:30	334.90	258.40	519.33	222.38
0:45	334.90	257.20	518.75	223.79
1:00	334.90	259.50	513.94	211.39
1:15	334.90	262.90	524.81	218.14
1:30	334.90	263.90	529.81	223.14
1:45	334.90	265.00	531.64	226.36
2:00	334.90	262.70	527.14	226.59
2:15	334.90	262.50	535.55	230.09
2:30	334.90	263.00	537.94	239.38
2:45	334.90	257.40	537.41	242.27
3:00	334.90	259.10	534.77	216.64
3:15	334.90	254.40	537.58	236.96
3:30	334.90	258.60	534.78	241.66
3:45	334.90	260.30	542.73	241.69
4:00	334.90	259.00	550.92	242.96
4:15	334.90	260.70	552.19	229.07
4:30	334.90	260.70	552.27	233.84
4:45	334.90	262.40	548.63	234.44
5:00	334.90	262.70	567.42	239.89
5:15	334.90	268.90	569.52	244.15
5:30	334.90	278.80	568.94	252.06
5:45	334.90	287.50	569.06	265.86
6:00	336.90	292.80	567.56	269.24
6:15	336.90	300.40	566.55	271.88
6:30	336.90	303.80	566.30	276.66
6:45	336.90	307.00	565.80	275.86
7:00	336.90	301.60	536.95	276.33
7:15	336.90	302.70	536.41	280.49
7:30	336.90	298.10	537.22	273.02
7:45	336.90	295.30	537.02	269.53
8:00	336.90	289.50	535.25	268.65
8:15	336.90	285.70	536.28	264.65
8:30	336.90	279.60	533.95	269.73
8:45	336.90	280.80	530.92	265.29
9:00	336.90	280.40	528.73	268.63

Yours faithfully,
Pema Lhamo

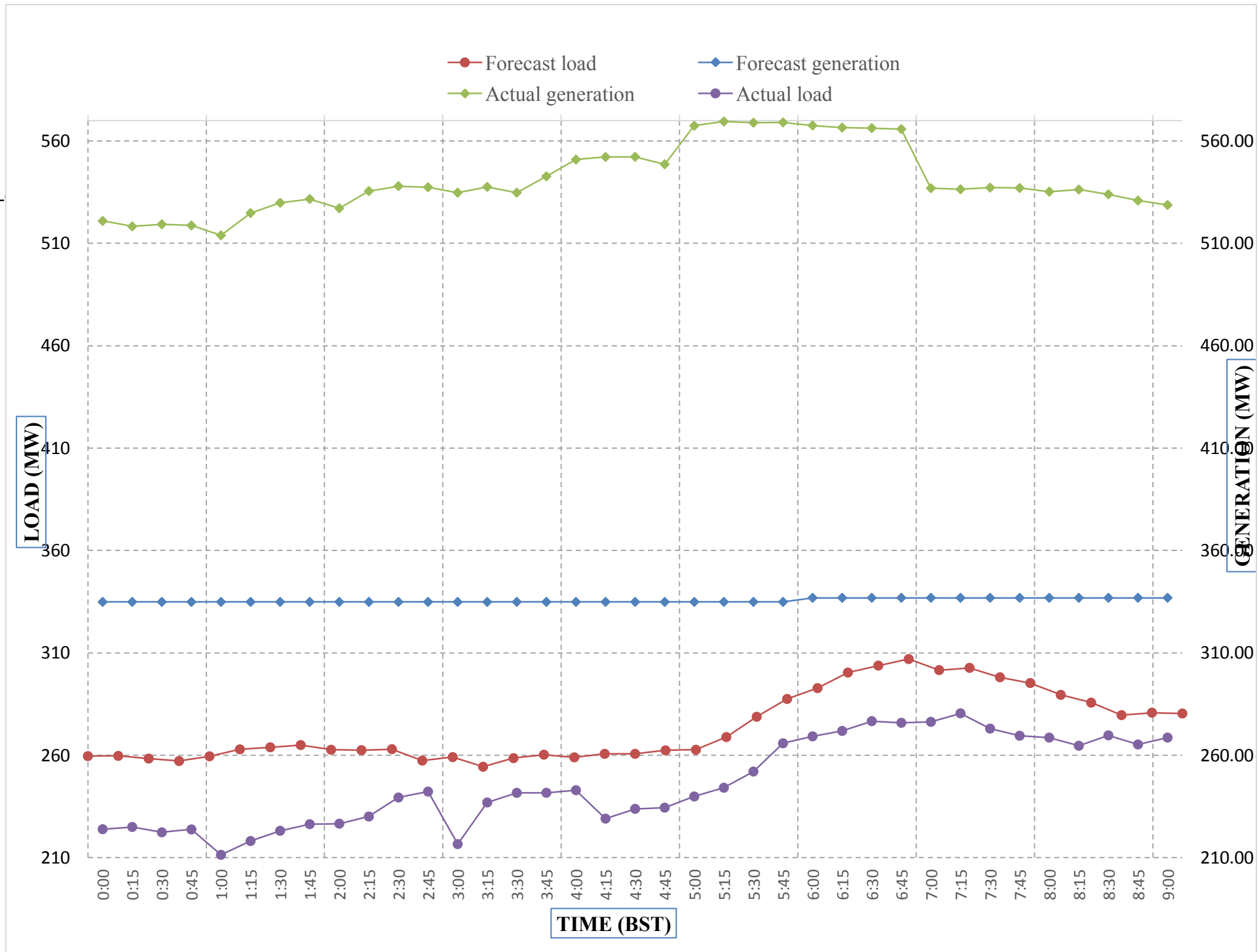
Coincidental peak load of Day(Last year):	
317.81	21-Apr-17
Maximum Load till date:	
375.23 MW	24-Feb-18



Message No.: Enter your message number
 From: Shift In-charge, Control Room

4/5/2018 11:18 21-Apr-18
 4/5/2018 11:18 11:12

Forecast Generation & Load with Actual Generation & Load of Today from 00:00hrs to 09:00hrs(21-Apr-2018).



Yours faithfully
 Pema Lhamo

Coincidental peak load of	
317.81	21-Apr-17
Maximum Load till date:	
375.23 MW	24-Feb-18



འབྲུག་གྲོགས་ལེན་ལྷན་ཁག་།
Bhutan Power Corporation Ltd.
Bhutan Power System Operator
Thimphu: Bhutan



Message No.: Enter your message number **Date:** 21-Apr-18
From: Shift In-charge, Control Room **Time:** 11:12

To
 Managing Director, BPC. Email: gemtshering@bpc.bt
 Director, O&MD, DGPC. Email: director.umd@drukgreen.com
 General Manager, TD, BPC. Email: ktobgye@bpc.bt
 Advisor, BPC. Email: bharrattamang@bpc.bt

Sub: Load Generation Balance Report of Tomorrow (22-Apr-2018).

Hours (BST)	Forecast		Hours (BST)	Forecast	
	Generation	Load		Generation	Load
0:00	405.30	261.50	12:00	405.30	284.90
0:15	405.30	261.30	12:15	405.30	283.80
0:30	405.30	258.40	12:30	405.30	282.50
0:45	405.30	256.80	12:45	405.30	277.00
1:00	405.30	258.40	13:00	405.30	272.50
1:15	405.30	261.20	13:15	405.30	271.30
1:30	405.30	262.70	13:30	405.30	269.90
1:45	405.30	262.70	13:45	405.30	268.20
2:00	405.30	260.80	14:00	405.30	268.20
2:15	405.30	261.40	14:15	405.30	267.20
2:30	405.30	259.70	14:30	405.30	270.40
2:45	405.30	256.90	14:45	405.30	269.90
3:00	405.30	257.20	15:00	405.30	269.30
3:15	405.30	253.00	15:15	405.30	264.60
3:30	405.30	255.80	15:30	405.30	264.30
3:45	405.30	256.60	15:45	405.30	264.50
4:00	405.30	257.40	16:00	405.30	268.70
4:15	405.30	257.70	16:15	405.30	273.80
4:30	405.30	257.10	16:30	405.30	278.00
4:45	405.30	258.30	16:45	405.30	279.80
5:00	405.30	259.30	17:00	409.20	280.20
5:15	405.30	264.40	17:15	409.20	285.20
5:30	405.30	272.20	17:30	409.20	286.40
6:45	405.30	279.80	17:45	409.20	295.30
6:00	409.20	285.20	18:00	409.20	298.10
6:15	409.20	291.70	18:15	409.20	302.30
6:30	409.20	295.60	18:30	409.20	306.20
6:45	409.20	298.50	18:45	409.20	315.90
7:00	409.20	293.90	19:00	409.20	319.00
7:15	409.20	295.80	19:15	409.20	322.60
7:30	409.20	291.80	19:30	409.20	321.40
7:45	409.20	289.80	19:45	409.20	316.70
8:00	409.20	284.40	20:00	409.20	312.90
8:15	409.20	281.60	20:15	409.20	311.90
8:30	409.20	278.10	20:30	409.20	308.60
8:45	409.20	277.50	20:45	409.20	292.00
9:00	409.20	276.90	21:00	405.30	290.20
9:15	409.20	278.00	21:15	405.30	293.90
9:30	409.20	278.20	21:30	405.30	289.60
9:45	409.20	278.30	21:45	405.30	282.50
10:00	409.20	278.00	22:00	405.30	274.40
10:15	409.20	274.00	22:15	405.30	270.60
10:30	405.30	276.60	22:30	405.30	266.40
10:45	405.30	277.80	22:45	405.30	262.60
11:00	405.30	275.60	23:00	405.30	259.40
11:15	405.30	279.90	23:15	405.30	258.70
11:30	405.30	277.90	23:30	405.30	255.50
11:45	405.30	280.60	23:45	405.30	256.80

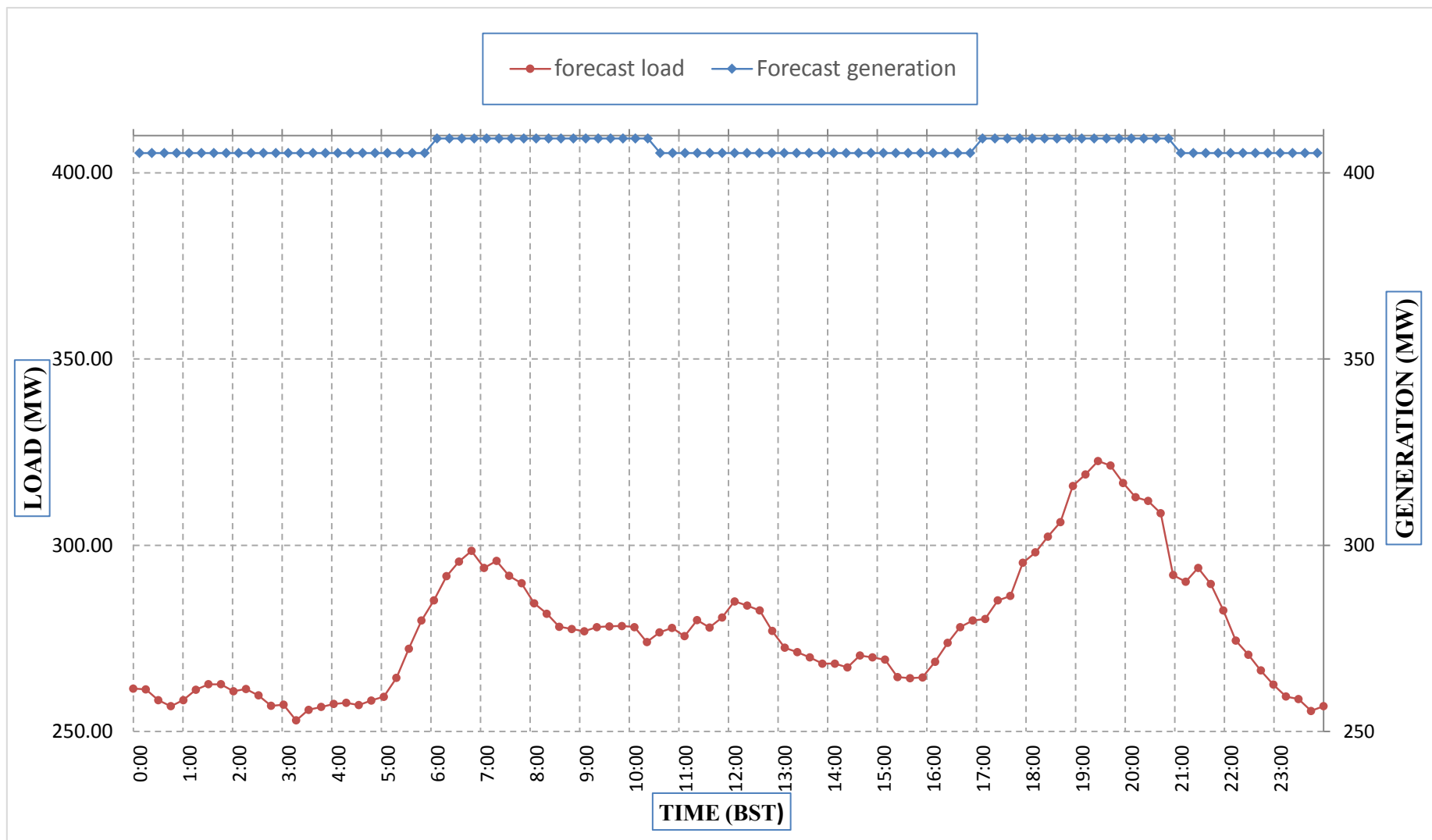
Yours faithfully,
 Pema Lhamo



Message No.: Enter your message number
 From: Shift In-charge, Control Room

Date: 21-Apr-18
 Time: 11:12

Forecast Generation & Load Forecast for Tomorrow (22-Apr-2018).



Yours faithfully,
 Pema Lhamo

	MW
Scheduled Peak Generation(22-Apr-2018).	409.20
Forecast Peak Load(22-Apr-2018).	322.60



འབྲུག་གྲོང་ཁང་གི་ལྷན་ཁག་



Bhutan Power Corporation Ltd.
Bhutan Power System Operator
Thimphu: Bhutan

Message No.: Enter your message number
From: Shift In-charge, Control Room

Date: 21-Apr-18
Time: 11:12

To
Managing Director, BPC. Email: gemtshering@bpc.bt
Director, O&MD, DGPC. Email: director.umd@drukgreen.com
General Manager, TD, BPC. Email: ktobgye@bpc.bt
Advisor, BPC. Email: bharattamang@bpc.bt

Sub: Forecast Generation and Actual Generation of Dagachhu (20-Apr-2018).

Hours (BST)	Actual Frequency	Forecast Generation	Actual Generation	Hours (BST)	Actual Frequency	Forecast Generation	Actual Generation
0:00	49.94	0.00	0.00	12:00	50.07	0.00	0.00
0:15	49.99	0.00	0.00	12:15	50.04	0.00	0.00
0:30	49.96	0.00	0.00	12:30	50.04	0.00	0.00
0:45	49.95	0.00	0.00	12:45	50.07	0.00	0.00
1:00	49.92	0.00	0.00	13:00	50.07	0.00	0.00
1:15	49.92	0.00	0.00	13:15	50.07	0.00	0.00
1:30	49.94	0.00	0.00	13:30	50.03	0.00	0.00
1:45	49.96	0.00	0.00	13:45	50.00	0.00	0.00
2:00	49.98	0.00	0.00	14:00	50.01	0.00	0.00
2:15	49.97	0.00	0.00	14:15	49.96	0.00	0.00
2:30	50.01	0.00	0.00	14:30	49.93	0.00	0.00
2:45	49.99	0.00	0.00	14:45	49.96	0.00	0.00
3:00	49.97	0.00	0.00	15:00	49.99	0.00	0.00
3:15	49.93	0.00	0.00	15:15	50.00	0.00	0.00
3:30	49.96	0.00	0.00	15:30	50.00	0.00	0.00
3:45	50.00	0.00	0.00	15:45	49.99	0.00	0.00
4:00	49.99	0.00	0.00	16:00	49.99	0.00	0.00
4:15	49.98	0.00	0.00	16:15	50.02	0.00	0.00
4:30	49.95	0.00	0.00	16:30	49.97	0.00	0.00
4:45	49.96	0.00	0.00	16:45	49.97	0.00	0.00
5:00	49.97	0.00	0.00	17:00	49.94	0.00	0.00
5:15	50.00	0.00	0.00	17:15	49.96	0.00	0.00
5:30	49.98	0.00	0.00	17:30	49.99	0.00	0.00
6:45	49.95	0.00	0.00	17:45	49.96	0.00	0.00
6:00	50.03	0.00	0.00	18:00	50.01	0.00	0.00
6:15	50.02	0.00	0.00	18:15	49.98	0.00	0.00
6:30	50.00	0.00	0.00	18:30	49.98	0.00	0.00
6:45	50.01	0.00	0.00	18:45	49.98	0.00	0.00
7:00	50.01	0.00	0.00	19:00	49.94	0.00	0.00
7:15	50.04	0.00	0.00	19:15	49.87	0.00	0.00
7:30	50.04	0.00	0.00	19:30	49.82	0.00	0.00
7:45	50.01	0.00	0.00	19:45	49.95	0.00	0.00
8:00	50.03	0.00	0.00	20:00	49.98	0.00	0.00
8:15	50.09	0.00	0.00	20:15	49.98	0.00	0.00
8:30	50.04	0.00	0.00	20:30	49.94	0.00	0.00
8:45	50.03	0.00	0.00	20:45	49.97	0.00	0.00
9:00	50.03	0.00	0.00	21:00	50.01	0.00	0.00
9:15	50.03	0.00	0.00	21:15	49.95	0.00	0.00
9:30	50.02	0.00	0.00	21:30	49.97	0.00	0.00
9:45	50.01	0.00	0.00	21:45	49.93	0.00	0.00
10:00	50.06	0.00	0.00	22:00	49.95	0.00	0.00
10:15	50.05	0.00	0.00	22:15	49.90	0.00	0.00
10:30	50.01	0.00	0.00	22:30	49.87	0.00	0.00
10:45	50.03	0.00	0.00	22:45	49.88	0.00	0.00
11:00	49.98	0.00	0.00	23:00	49.84	0.00	0.00
11:15	50.02	0.00	0.00	23:15	49.93	0.00	0.00
11:30	50.02	0.00	0.00	23:30	49.90	0.00	0.00
11:45	50.03	0.00	0.00	23:45	49.96	0.00	0.00

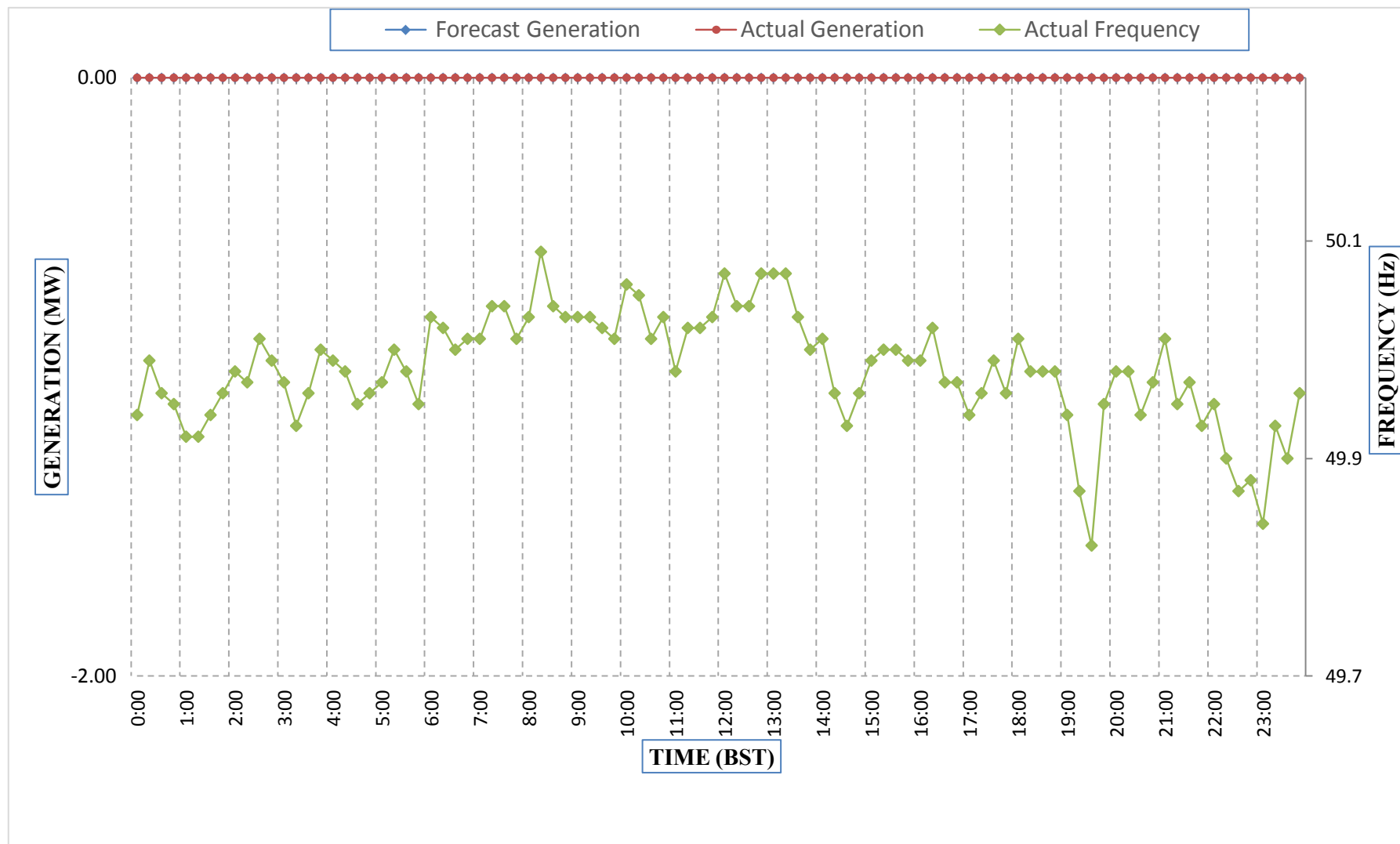
Yours faithfully,
Pema Lhamo



Message No.: Enter your message number
 From: Shift In-charge, Control Room

Date: 21-Apr-18
 Time: 11:12

Forecast Generation & Actual Generation of Dagachhu(20-Apr-2018).



Yours faithfully,
 Pema Lhamo