



འབྲུག་རྒྱལ་ཁོག་གི་ལེན་འཛིན།

Bhutan Power Corporation Ltd.
Bhutan Power System Operator
Thimphu: Bhutan



Message No.: Enter your message number
From: Shift In-charge, Control Room

Date: 19-Apr-18
Time: 11:09

To
Managing Director, BPC. Email: gemtshering@bpc.bt
Director, O&MD, DGPC. Email: director.umd@drukgreen.com
General Manager, TD, BPC. Email: ktobgye@bpc.bt
General Manager, DCSD, BPC. Email: sandeeprai@bpc.bt

Sub: **Load Generation Balance Report of Yesterday (18-Apr-2018).**

Hours (BST)	Forecast		Actual		Hours (BST)	Forecast		Actual	
	Generation	Load	Generation	Load		Generation	Load	Generation	Load
0:00	299.90	262.30	397.02	245.97	12:00	299.90	286.00	411.33	280.70
0:15	299.90	260.60	396.17	248.52	12:15	299.90	284.60	418.05	295.37
0:30	299.90	260.40	399.15	238.56	12:30	299.90	282.40	416.38	294.08
0:45	299.90	265.10	398.41	246.81	12:45	299.90	280.60	411.80	291.41
1:00	299.90	268.80	398.59	249.36	13:00	299.90	278.30	412.43	278.95
1:15	299.90	264.70	398.43	248.38	13:15	299.90	279.20	411.92	277.23
1:30	299.90	264.70	397.73	252.95	13:30	299.90	277.80	413.27	284.12
1:45	299.90	265.70	396.16	254.07	13:45	299.90	275.30	413.71	284.40
2:00	299.90	264.70	396.73	252.11	14:00	299.90	271.90	415.02	277.10
2:15	299.90	268.60	392.84	253.65	14:15	299.90	279.50	412.12	263.30
2:30	299.90	268.10	394.36	250.64	14:30	299.90	281.60	412.82	267.49
2:45	299.90	267.30	393.55	243.61	14:45	299.90	279.00	412.30	265.74
3:00	299.90	263.50	393.02	255.07	15:00	299.90	280.90	413.73	267.02
3:15	299.90	264.80	391.83	241.40	15:15	299.90	266.40	414.76	270.38
3:30	299.90	266.70	391.48	252.60	15:30	299.90	265.00	413.68	269.94
3:45	299.90	265.10	390.46	250.17	15:45	299.90	269.90	415.33	274.02
4:00	299.90	268.30	389.66	245.82	16:00	299.90	278.20	415.38	279.57
4:15	299.90	263.00	390.46	244.77	16:15	299.90	277.20	414.34	292.16
4:30	299.90	262.20	389.80	248.73	16:30	299.90	283.40	415.23	288.78
4:45	299.90	269.80	389.74	253.52	16:45	299.90	290.00	414.71	287.55
5:00	299.90	270.10	387.12	249.30	17:00	299.90	291.60	416.48	289.20
5:15	299.90	274.80	387.53	256.16	17:15	299.90	294.20	415.27	294.15
5:30	299.90	281.80	388.04	265.56	17:30	299.90	297.20	415.24	300.97
5:45	299.90	289.00	386.82	271.23	17:45	299.90	300.70	415.02	305.61
6:00	299.90	293.70	387.00	277.02	18:00	299.90	307.00	414.66	313.70
6:15	299.90	301.00	386.93	279.87	18:15	299.90	308.50	414.42	302.91
6:30	299.90	306.30	386.80	283.10	18:30	299.90	314.10	416.82	323.83
6:45	299.90	309.20	388.32	287.89	18:45	299.90	321.70	416.63	333.66
7:00	299.90	308.70	386.95	283.88	19:00	299.90	327.80	416.63	337.96
7:15	299.90	308.90	391.49	276.78	19:15	299.90	328.30	433.27	344.59
7:30	299.90	301.00	393.34	281.43	19:30	299.90	326.60	436.87	344.38
7:45	299.90	300.10	391.48	273.97	19:45	299.90	324.40	436.37	338.06
8:00	299.90	298.30	391.32	257.74	20:00	299.90	323.30	436.30	337.63
8:15	299.90	291.50	391.51	257.66	20:15	299.90	322.60	436.30	329.95
8:30	299.90	289.40	393.17	252.30	20:30	299.90	315.70	436.09	329.43
8:45	299.90	286.40	391.68	250.39	20:45	299.90	313.50	435.38	322.92
9:00	299.90	287.50	391.69	257.19	21:00	299.90	305.50	436.00	315.09
9:15	299.90	284.70	392.02	254.03	21:15	299.90	305.20	436.63	311.93
9:30	299.90	282.20	391.95	257.28	21:30	299.90	295.50	435.67	314.00
9:45	299.90	279.30	391.84	267.29	21:45	299.90	289.70	435.79	304.02
10:00	299.90	277.20	386.41	258.63	22:00	300.70	285.90	436.11	297.41
10:15	299.90	271.50	387.99	254.89	22:15	300.70	278.60	425.20	292.18
10:30	299.90	276.40	394.44	275.67	22:30	300.70	274.70	425.09	280.14
10:45	299.90	281.10	402.09	277.08	22:45	300.70	270.00	424.76	274.78
11:00	299.90	280.90	401.83	279.40	23:00	291.40	262.90	425.21	282.11
11:15	299.90	283.20	410.80	277.41	23:15	291.40	267.60	425.31	279.04
11:30	299.90	279.20	411.23	274.76	23:30	291.40	266.40	425.44	279.17
11:45	299.90	280.90	412.02	271.81	23:45	291.40	266.70	425.05	270.02

Yours faithfully
Tshering Yangzom

Coincidental peak load of Day(Last year):	
334.23 MW	18-Apr-17
Maximum Load till date:	
375.23 MW	24-Feb-18



འབྲུག་གྲོག་མེ་ལས་འཛིན།

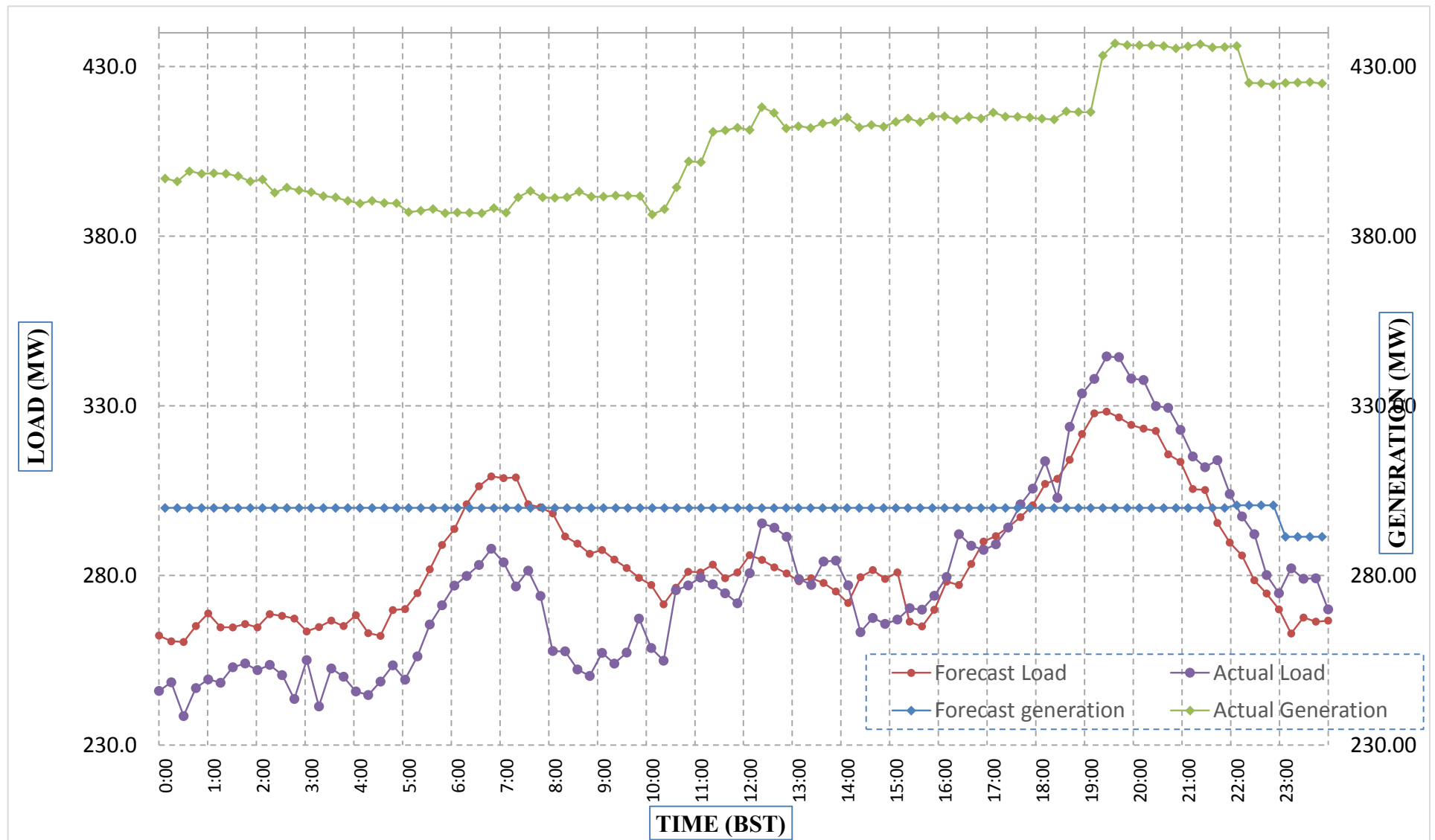
Bhutan Power Corporation Ltd.
 Bhutan Power System Operator
 Thimphu: Bhutan



Message No.: Enter your message number
 From: Shift In-charge, Control Room

Date: 19-Apr-18
 Time: 11:09

Forecast Generation & Load with Actual Generation & Load (18-Apr-2018).



Yours faithfully,
 Tshering Yangzom

	MW	Coincidental peak load of Day(Last year):	
Peak Co-incident Generation(18-Apr-2018).	436.87	334.23 MW	18-Apr-17
Peak Co-incident Load(18-Apr-2018).	344.59	Maximum Load till date:	
		375.23 MW	24-Feb-18

Telephone: +975-02335631; Fax: +975-02335632; Email: bhutansystemoperator@bpc.bt; www.bpc.bt



ཕྱག་ལུགས་ལྷན་ཁག་ལེ་ལས་འཛིན།

Bhutan Power Corporation Ltd.
Bhutan Power System Operator
Thimphu: Bhutan



Message No.: Enter your message number
From: Shift In-charge, Control Room

Date: 19-Apr-18
Time: 8:52

To
Managing Director, BPC. Email: gemtshering@bpc.bt
Director, O&MD, DGPC. Email: director.omb@drukgreen.com
General Manager, TD, BPC. Email: thinleygyeltshen@bpc.bt
General Manager, DCSD, BPC. Email: sandeeprai@bpc.bt

Sub: Load Generation Balance Report of Today (19-Apr-2018).

Hours (BST)	Forecast		Actual	
	Generation	Load	Generation	Load
0:00	397.90	265.30	423.91	267.90
0:15	397.90	263.40	424.16	264.38
0:30	397.90	262.50	424.28	265.55
0:45	397.90	265.50	423.46	260.55
1:00	397.90	265.90	423.97	246.79
1:15	397.90	266.50	423.84	258.94
1:30	397.90	264.80	403.59	263.63
1:45	397.90	267.40	406.06	261.69
2:00	397.90	265.70	403.87	262.75
2:15	397.90	262.90	406.35	265.18
2:30	397.90	264.80	405.90	263.24
2:45	397.90	262.00	406.54	255.82
3:00	397.90	261.20	406.41	247.84
3:15	397.90	260.80	406.36	270.50
3:30	397.90	259.40	407.10	259.76
3:45	397.90	259.90	406.56	270.59
4:00	397.90	262.90	406.48	258.02
4:15	397.90	262.90	406.46	271.33
4:30	397.90	259.20	405.85	266.52
4:45	397.90	263.90	406.84	267.34
5:00	397.90	262.60	404.94	268.63
5:15	397.90	268.80	407.02	271.54
5:30	397.90	279.80	404.54	284.96
5:45	397.90	291.30	403.75	291.73
6:00	409.90	294.90	406.53	302.23
6:15	409.90	302.50	396.73	317.66
6:30	409.90	308.90	394.33	309.05
6:45	409.90	308.20	395.03	320.11
7:00	409.90	307.10	395.16	312.17
7:15	409.90	303.90	395.29	323.81
7:30	409.90	298.50	394.90	322.14
7:45	409.90	296.60	395.25	318.24
8:00	409.90	293.70	395.13	310.21
8:15	409.90	286.30	394.87	305.65
8:30	409.90	285.10	377.07	289.45
8:45	409.90	284.90	377.03	291.52
9:00	409.90	285.90	376.92	289.97

Yours faithfully,
Tshering Yangzom

Coincidental peak load of Day(Last year):	
334.23 MW	19-Apr-17
Maximum Load till date:	
375.23 MW	24-Feb-18



Message No.: Enter your message number
 From: Shift In-charge, Control Room

4/5/2018 11:18 19-Apr-18
 4/5/2018 11:18 8:52

Forecast Generation & Load with Actual Generation & Load of Today from 00:00hrs to 09:00hrs(19-Apr-2018).



Yours faithfully
 Tshering Yangzom

Coincidental peak load of	
334.23 MW	19-Apr-17
Maximum Load till date:	
375.23 MW	24-Feb-18



འབྲུག་གྲོག་མེ་ལམ་འཛིན།
Bhutan Power Corporation Ltd.
Bhutan Power System Operator
Thimphu: Bhutan



Message No.: Enter your message number **Date:** 19-Apr-18
From: Shift In-charge, Control Room **Time:** 11:09

To
 Managing Director, BPC. Email: gemtshering@bpc.bt
 Director, O&MD, DGPC. Email: director.umd@drukgreen.com
 General Manager, TD, BPC. Email: ktobgye@bpc.bt
 Advisor, BPC. Email: bharrattamang@bpc.bt

Sub: Load Generation Balance Report of Tomorrow (20-Apr-2018).

Hours (BST)	Forecast		Hours (BST)	Forecast	
	Generation	Load		Generation	Load
0:00	342.90	260.20	12:00	344.90	287.20
0:15	342.90	258.70	12:15	343.90	285.90
0:30	342.90	256.70	12:30	343.90	284.20
0:45	342.90	259.60	12:45	343.90	277.30
1:00	342.90	261.60	13:00	343.90	273.30
1:15	344.90	262.80	13:15	342.90	274.10
1:30	344.90	262.30	13:30	342.90	274.50
1:45	344.90	264.50	13:45	342.90	274.80
2:00	344.90	260.60	14:00	342.90	271.20
2:15	343.90	261.00	14:15	343.90	269.70
2:30	343.90	261.80	14:30	343.90	273.10
2:45	343.90	257.80	14:45	343.90	273.10
3:00	343.90	259.30	15:00	343.90	272.20
3:15	345.90	256.20	15:15	342.90	265.10
3:30	345.90	256.70	15:30	342.90	263.90
3:45	345.90	255.90	15:45	342.90	269.40
4:00	345.90	258.40	16:00	342.90	277.10
4:15	343.90	257.70	16:15	341.90	282.40
4:30	343.90	256.10	16:30	341.90	283.10
4:45	343.90	261.50	16:45	341.90	288.60
5:00	343.90	260.40	17:00	341.90	288.50
5:15	344.90	266.40	17:15	360.20	293.30
5:30	344.90	276.70	17:30	360.20	292.30
6:45	344.90	285.90	17:45	360.20	295.10
6:00	344.90	290.80	18:00	360.20	305.10
6:15	352.00	297.50	18:15	358.10	306.30
6:30	352.00	303.40	18:30	358.10	311.70
6:45	352.00	303.40	18:45	358.10	320.00
7:00	351.00	300.20	19:00	364.20	327.00
7:15	354.00	298.20	19:15	359.10	329.40
7:30	354.00	292.90	19:30	359.10	328.60
7:45	354.00	291.10	19:45	359.10	324.60
8:00	354.00	284.70	20:00	359.10	320.40
8:15	352.00	279.50	20:15	359.10	321.00
8:30	352.00	277.20	20:30	359.10	312.70
8:45	352.00	278.00	20:45	359.10	291.10
9:00	352.00	277.90	21:00	359.10	288.90
9:15	351.00	278.00	21:15	342.90	292.60
9:30	351.00	279.50	21:30	342.90	297.30
9:45	351.00	278.50	21:45	342.90	287.20
10:00	351.00	276.20	22:00	342.90	283.50
10:15	343.90	273.70	22:15	342.90	278.80
10:30	343.90	279.40	22:30	342.90	273.40
10:45	343.90	277.50	22:45	342.90	267.00
11:00	343.90	277.50	23:00	342.90	267.40
11:15	344.90	280.50	23:15	341.90	268.80
11:30	344.90	278.50	23:30	341.90	266.00
11:45	344.90	284.00	23:45	341.90	265.40

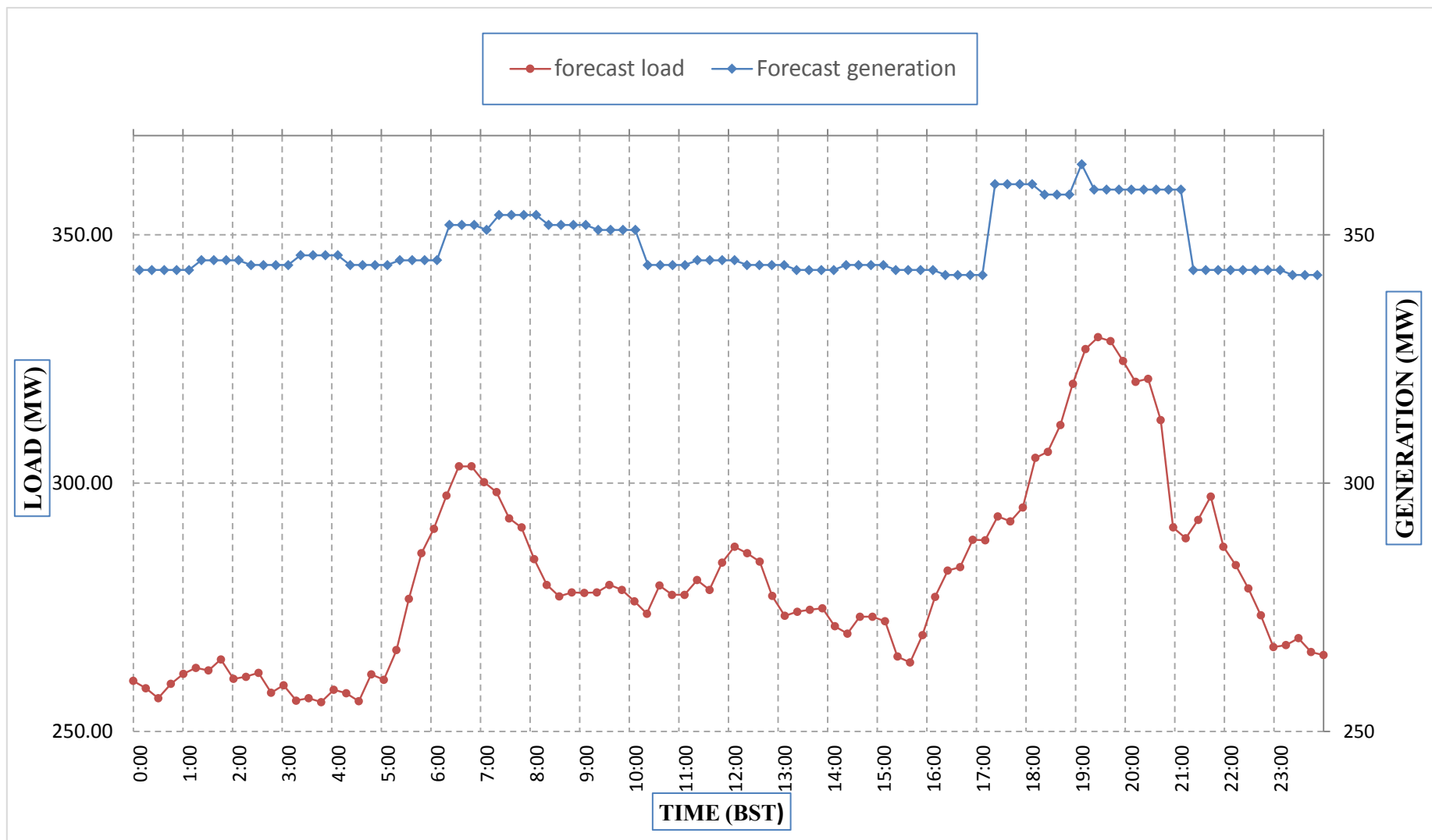
Yours faithfully,
 Tshering Yangzom



Message No.: Enter your message number
From: Shift In-charge, Control Room

Date: 19-Apr-18
Time: 8:52

Forecast Generation & Load Forecast for Tomorrow (20-Apr-2018).



Yours faithfully,
 Tshering Yangzom

	MW
Scheduled Peak Generation(20-Apr-2018).	364.20
Forecast Peak Load(20-Apr-2018).	329.40



འབྲུག་གྲོང་ཁའི་ལས་འདེམས་ལྷན་ཁག་།



Bhutan Power Corporation Ltd.
Bhutan Power System Operator
Thimphu: Bhutan

Message No.: Enter your message number
From: Shift In-charge, Control Room

Date: 19-Apr-18
Time: 11:09

To
Managing Director, BPC. Email: gemtshering@bpc.bt
Director, O&MD, DGPC. Email: director.umd@drukgreen.com
General Manager, TD, BPC. Email: ktobgye@bpc.bt
Advisor, BPC. Email: bharattamang@bpc.bt

Sub: Forecast Generation and Actual Generation of Dagachhu (18-Apr-2018).

Hours (BST)	Actual Frequency	Forecast Generation	Actual Generation	Hours (BST)	Actual Frequency	Forecast Generation	Actual Generation
0:00	49.95	0.00	0.00	12:00	50.03	0.00	0.00
0:15	49.97	0.00	0.00	12:15	50.02	0.00	0.00
0:30	49.97	0.00	0.00	12:30	50.03	0.00	0.00
0:45	49.94	0.00	0.00	12:45	50.03	0.00	0.00
1:00	49.97	0.00	0.00	13:00	50.04	0.00	0.00
1:15	49.99	0.00	0.00	13:15	49.98	0.00	0.00
1:30	49.98	0.00	0.00	13:30	49.93	0.00	0.00
1:45	49.96	0.00	0.00	13:45	49.94	0.00	0.00
2:00	49.89	0.00	0.00	14:00	49.95	0.00	0.00
2:15	49.93	0.00	0.00	14:15	49.94	0.00	0.00
2:30	49.96	0.00	0.00	14:30	49.94	0.00	0.00
2:45	49.99	0.00	0.00	14:45	49.93	0.00	0.00
3:00	49.96	0.00	0.00	15:00	49.92	0.00	0.00
3:15	49.97	0.00	0.00	15:15	49.94	0.00	0.00
3:30	49.97	0.00	0.00	15:30	49.90	0.00	0.00
3:45	49.98	0.00	0.00	15:45	49.91	0.00	0.00
4:00	49.96	0.00	0.00	16:00	49.97	0.00	0.00
4:15	49.94	0.00	0.00	16:15	49.96	0.00	0.00
4:30	49.91	0.00	0.00	16:30	49.91	0.00	0.00
4:45	49.88	0.00	0.00	16:45	49.93	0.00	0.00
5:00	49.90	0.00	0.00	17:00	49.92	0.00	0.00
5:15	49.86	0.00	0.00	17:15	49.97	0.00	0.00
5:30	49.93	0.00	0.00	17:30	50.02	0.00	0.00
6:45	49.97	0.00	0.00	17:45	50.03	0.00	0.00
6:00	49.99	0.00	0.00	18:00	50.03	0.00	0.00
6:15	49.98	0.00	0.00	18:15	49.99	0.00	0.00
6:30	50.03	0.00	0.00	18:30	49.96	0.00	0.00
6:45	50.04	0.00	0.00	18:45	49.99	0.00	0.00
7:00	49.95	0.00	0.00	19:00	49.95	0.00	0.00
7:15	49.98	0.00	0.00	19:15	49.91	0.00	0.00
7:30	50.01	0.00	0.00	19:30	49.90	0.00	0.00
7:45	50.06	0.00	0.00	19:45	50.02	0.00	0.00
8:00	50.03	0.00	0.00	20:00	50.01	0.00	0.00
8:15	49.95	0.00	0.00	20:15	49.97	0.00	0.00
8:30	49.94	0.00	0.00	20:30	49.92	0.00	0.00
8:45	49.94	0.00	0.00	20:45	49.96	0.00	0.00
9:00	49.96	0.00	0.00	21:00	49.95	0.00	0.00
9:15	49.92	0.00	0.00	21:15	49.86	0.00	0.00
9:30	49.97	0.00	0.00	21:30	49.86	0.00	0.00
9:45	49.97	0.00	0.00	21:45	50.00	0.00	0.00
10:00	49.96	0.00	0.00	22:00	49.90	0.00	0.00
10:15	49.99	0.00	0.00	22:15	49.87	0.00	0.00
10:30	50.01	0.00	0.00	22:30	49.91	0.00	0.00
10:45	49.99	0.00	0.00	22:45	49.93	0.00	0.00
11:00	49.99	0.00	0.00	23:00	49.84	0.00	0.00
11:15	50.00	0.00	0.00	23:15	49.88	0.00	0.00
11:30	50.01	0.00	0.00	23:30	49.88	0.00	0.00
11:45	50.03	0.00	0.00	23:45	49.95	0.00	0.00

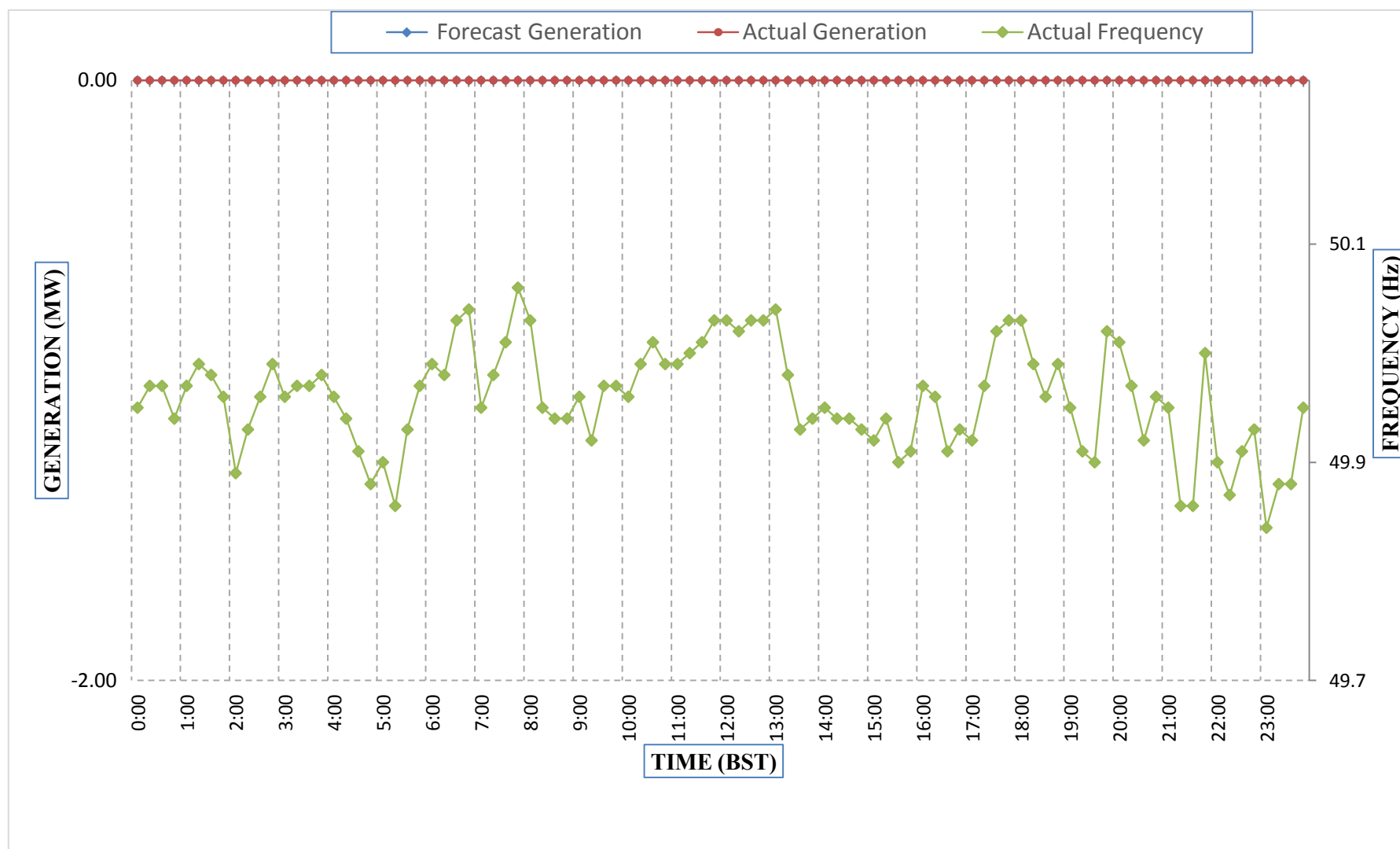
Yours faithfully,
Tshering Yangzom



Message No.: Enter your message number
 From: Shift In-charge, Control Room

Date: 19-Apr-18
 Time: 8:52

Forecast Generation & Actual Generation of Dagachhu(18-Apr-2018).



Yours faithfully,
 Tshering Yangzom