



འབྲུག་རྒྱུ་མེ་ལམ་འཛིན།

Bhutan Power Corporation Ltd.
Bhutan Power System Operator
Thimphu: Bhutan



Message No.: Enter your message number
From: Shift In-charge, Control Room

Date: 18-Apr-18
Time: 11:20

To
Managing Director, BPC. Email: gemtshering@bpc.bt
Director, O&MD, DGPC. Email: director.omb@drukgreen.com
General Manager, TD, BPC. Email: ktobgye@bpc.bt
General Manager, DCSD, BPC. Email: sandeeprai@bpc.bt

Sub: **Load Generation Balance Report of Yesterday (17-Apr-2018).**

Hours (BST)	Forecast		Actual		Hours (BST)	Forecast		Actual	
	Generation	Load	Generation	Load		Generation	Load	Generation	Load
0:00	322.90	262.40	315.02	275.30	12:00	322.90	286.20	316.38	290.41
0:15	322.90	260.70	315.27	267.57	12:15	322.90	284.80	316.48	290.78
0:30	322.90	260.40	315.38	266.35	12:30	322.90	282.60	316.38	285.15
0:45	322.90	265.20	299.77	264.41	12:45	322.90	280.80	315.72	268.35
1:00	322.90	268.90	299.45	265.41	13:00	322.90	278.40	316.82	263.77
1:15	322.90	264.60	302.20	267.18	13:15	322.90	279.40	318.05	259.93
1:30	322.90	264.70	300.76	268.99	13:30	322.90	278.10	320.21	262.11
1:45	322.90	265.70	300.87	270.73	13:45	322.90	275.60	320.39	271.45
2:00	322.90	264.70	300.68	264.98	14:00	322.90	272.10	319.70	275.87
2:15	322.90	268.50	300.47	261.39	14:15	322.90	279.80	320.32	272.63
2:30	322.90	268.00	301.05	256.99	14:30	322.90	281.90	328.33	273.55
2:45	322.90	267.30	307.13	256.52	14:45	322.90	279.20	329.27	274.68
3:00	322.90	263.50	305.22	255.18	15:00	322.90	281.40	327.73	270.15
3:15	322.90	264.80	306.86	248.40	15:15	322.90	266.90	328.27	264.16
3:30	322.90	266.60	305.12	248.30	15:30	322.90	265.60	331.14	260.66
3:45	322.90	265.00	305.98	248.80	15:45	322.90	270.20	350.17	270.95
4:00	322.90	268.30	306.09	252.95	16:00	322.90	278.70	344.23	272.09
4:15	322.90	263.00	307.61	259.27	16:15	322.90	277.40	347.12	278.48
4:30	322.90	262.10	305.48	250.58	16:30	322.90	283.80	346.34	275.59
4:45	322.90	269.70	307.77	251.89	16:45	322.90	290.40	346.33	287.02
5:00	322.90	270.00	308.06	229.14	17:00	322.90	292.00	346.48	284.34
5:15	322.90	275.00	305.59	245.16	17:15	322.90	294.60	360.55	283.55
5:30	322.90	282.10	307.70	260.46	17:30	322.90	297.70	367.74	285.29
5:45	322.90	289.10	304.42	276.78	17:45	322.90	301.20	366.70	298.45
6:00	322.90	293.70	307.05	284.34	18:00	322.90	307.50	366.95	296.06
6:15	322.90	301.00	305.24	292.92	18:15	322.90	309.00	366.86	298.82
6:30	322.90	306.20	304.89	299.41	18:30	322.90	314.80	366.80	299.83
6:45	322.90	309.10	306.45	300.51	18:45	322.90	322.40	366.85	306.18
7:00	322.90	308.80	305.88	298.10	19:00	322.90	328.60	367.01	305.55
7:15	322.90	309.10	306.04	298.22	19:15	322.90	329.00	366.27	308.16
7:30	322.90	301.20	305.69	289.91	19:30	322.90	327.20	365.47	316.88
7:45	322.90	300.40	306.02	292.52	19:45	322.90	325.20	366.79	304.38
8:00	322.90	298.70	306.19	281.99	20:00	322.90	324.00	364.44	292.46
8:15	322.90	291.80	305.23	273.66	20:15	322.90	323.30	383.40	294.81
8:30	322.90	289.80	305.84	276.20	20:30	322.90	316.30	387.98	286.22
8:45	322.90	286.60	304.79	274.71	20:45	322.90	314.10	374.30	214.98
9:00	322.90	287.80	305.95	280.21	21:00	322.90	306.00	388.27	155.65
9:15	322.90	284.90	307.22	281.68	21:15	322.90	305.70	388.55	220.88
9:30	322.90	282.20	310.82	290.47	21:30	322.90	296.00	388.00	249.43
9:45	322.90	279.30	311.90	289.33	21:45	322.90	290.00	388.45	249.30
10:00	322.90	277.10	312.21	292.60	22:00	322.90	286.10	389.56	252.50
10:15	322.90	271.50	310.13	284.44	22:15	322.90	278.70	392.39	251.02
10:30	322.90	276.40	309.83	294.48	22:30	322.90	274.80	392.30	253.03
10:45	322.90	281.20	313.33	266.02	22:45	322.90	270.20	392.47	239.59
11:00	322.90	281.10	314.15	270.38	23:00	322.90	262.90	397.87	245.37
11:15	322.90	283.50	315.41	264.75	23:15	322.90	267.70	398.30	253.77
11:30	322.90	279.30	316.77	276.38	23:30	322.90	266.40	399.70	250.50
11:45	322.90	281.00	315.39	291.03	23:45	322.90	266.80	396.53	252.19

Yours faithfully
Tshering Yangzom

Coincidental peak load of Day(Last year):	
334.23 MW	17-Apr-17
Maximum Load till date:	
375.23 MW	24-Feb-18



འབྲུག་གྲོག་མེ་ལས་འཛིན།

Bhutan Power Corporation Ltd.
 Bhutan Power System Operator
 Thimphu: Bhutan



Message No.: Enter your message number
 From: Shift In-charge, Control Room

Date: 18-Apr-18
 Time: 11:20

Forecast Generation & Load with Actual Generation & Load (17-Apr-2018).



Yours faithfully,
 Tshering Yangzom

	MW	Coincidental peak load of Day(Last year):	
Peak Co-incident Generation(17-Apr-2018).	399.70	334.23 MW	17-Apr-17
Peak Co-incident Load(17-Apr-2018).	316.88	Maximum Load till date:	
		375.23 MW	24-Feb-18

Telephone: +975-02335631; Fax: +975-02335632; Email: bhutansystemoperator@bpc.bt; www.bpc.bt



ཕྱག་ལུགས་ལྷན་ཁུངས་ལཱ་སྒྲུབ་ལྷན་ཁུངས་།

Bhutan Power Corporation Ltd.
Bhutan Power System Operator
Thimphu: Bhutan



Message No.: Enter your message number
From: Shift In-charge, Control Room

Date: 18-Apr-18
Time: 11:20

To
Managing Director, BPC. Email: gemtshering@bpc.bt
Director, O&MD, DGPC. Email: director.umd@drukgreen.com
General Manager, TD, BPC. Email: thinleygyeltshen@bpc.bt
General Manager, DCSD, BPC. Email: sandeeprai@bpc.bt

Sub: Load Generation Balance Report of Today (18-Apr-2018).

Hours (BST)	Forecast		Actual	
	Generation	Load	Generation	Load
0:00	299.90	262.30	397.02	245.97
0:15	299.90	260.60	396.17	248.52
0:30	299.90	260.40	399.15	238.56
0:45	299.90	265.10	398.41	246.81
1:00	299.90	268.80	398.59	249.36
1:15	299.90	264.70	398.43	248.38
1:30	299.90	264.70	397.73	252.95
1:45	299.90	265.70	396.16	254.07
2:00	299.90	264.70	396.73	252.11
2:15	299.90	268.60	392.84	253.65
2:30	299.90	268.10	394.36	250.64
2:45	299.90	267.30	393.55	243.61
3:00	299.90	263.50	393.02	255.07
3:15	299.90	264.80	391.83	241.40
3:30	299.90	266.70	391.48	252.60
3:45	299.90	265.10	390.46	250.17
4:00	299.90	268.30	389.66	245.82
4:15	299.90	263.00	390.46	244.77
4:30	299.90	262.20	389.80	248.73
4:45	299.90	269.80	389.74	253.52
5:00	299.90	270.10	387.12	249.30
5:15	299.90	274.80	387.53	256.16
5:30	299.90	281.80	388.04	265.56
5:45	299.90	289.00	386.82	271.23
6:00	299.90	293.70	387.00	277.02
6:15	299.90	301.00	386.93	279.87
6:30	299.90	306.30	386.80	283.10
6:45	299.90	309.20	388.32	287.89
7:00	299.90	308.70	386.95	283.88
7:15	299.90	308.90	391.49	276.78
7:30	299.90	301.00	393.34	281.43
7:45	299.90	300.10	391.48	273.97
8:00	299.90	298.30	391.32	257.74
8:15	299.90	291.50	391.51	257.66
8:30	299.90	289.40	393.17	252.30
8:45	299.90	286.40	391.68	250.39
9:00	299.90	287.50	391.69	257.19

Yours faithfully,
Tshering Yangzom

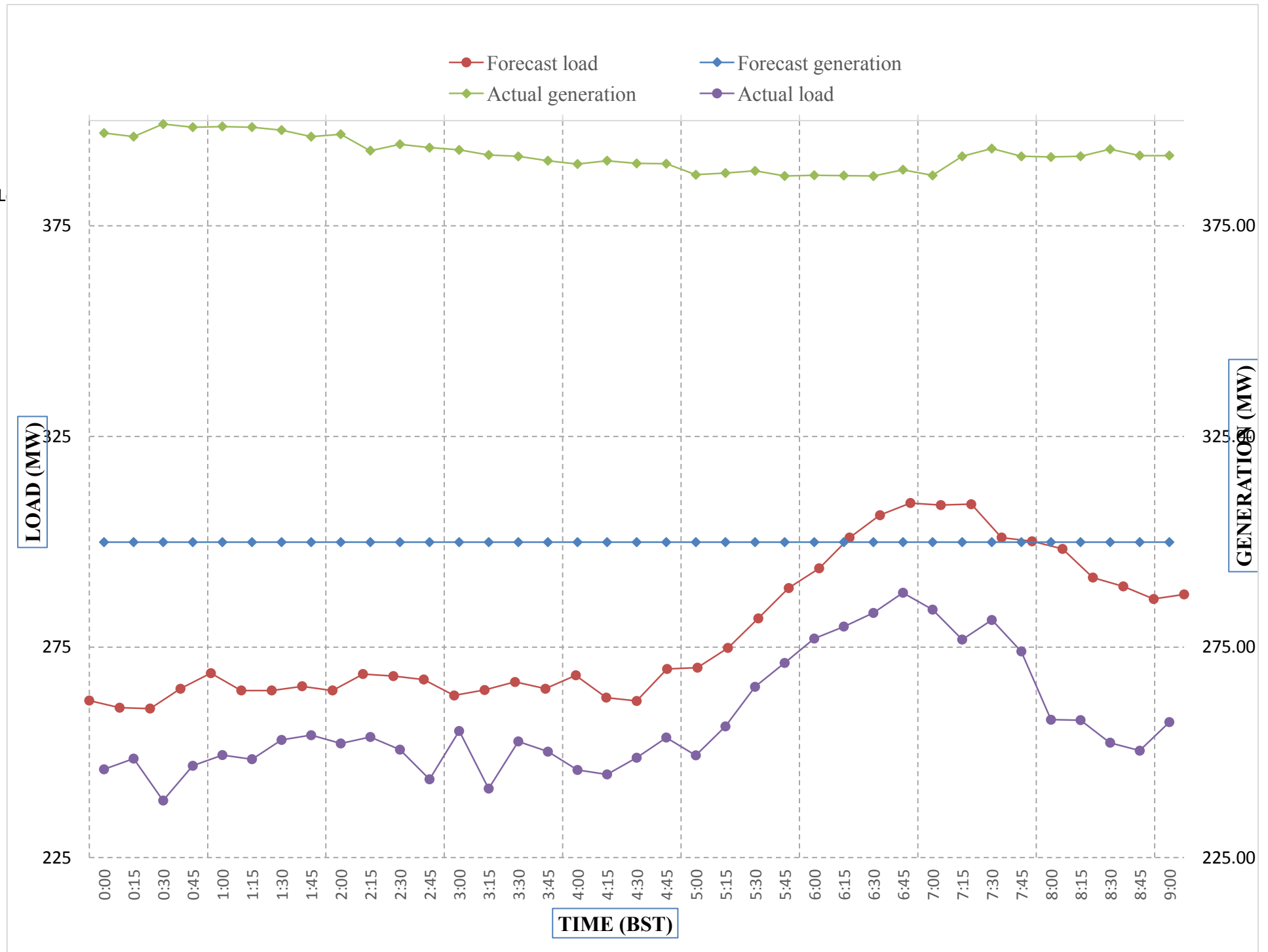
Coincidental peak load of Day(Last year):	
334.23 MW	18-Apr-17
Maximum Load till date:	
375.23 MW	24-Feb-18



Message No.: Enter your message number
 From: Shift In-charge, Control Room

4/5/2018 11:18 18-Apr-18
 4/5/2018 11:18 11:20

Forecast Generation & Load with Actual Generation & Load of Today from 00:00hrs to 09:00hrs(18-Apr-2018).



Yours faithfully
 Tshering Yangzom

Coincidental peak load of	
334.23 MW	18-Apr-17
Maximum Load till date:	
375.23 MW	24-Feb-18



འབྲུག་གྲོག་ལེ་ལས་འཛིན།
Bhutan Power Corporation Ltd.
Bhutan Power System Operator
Thimphu: Bhutan



Message No.: Enter your message number **Date:** 18-Apr-18
From: Shift In-charge, Control Room **Time:** 11:20

To
 Managing Director, BPC. Email: gemtshering@bpc.bt
 Director, O&MD, DGPC. Email: director.umd@drukgreen.com
 General Manager, TD, BPC. Email: ktobgye@bpc.bt
 Advisor, BPC. Email: bharrattamang@bpc.bt

Sub: Load Generation Balance Report of Tomorrow (19-Apr-2018).

Hours (BST)	Forecast		Hours (BST)	Forecast	
	Generation	Load		Generation	Load
0:00	397.90	265.30	12:00	397.90	287.00
0:15	397.90	263.40	12:15	397.90	284.00
0:30	397.90	262.50	12:30	397.90	281.30
0:45	397.90	265.50	12:45	397.90	275.40
1:00	397.90	265.90	13:00	397.90	272.00
1:15	397.90	266.50	13:15	397.90	271.00
1:30	397.90	264.80	13:30	397.90	272.90
1:45	397.90	267.40	13:45	397.90	272.80
2:00	397.90	265.70	14:00	397.90	270.00
2:15	397.90	262.90	14:15	397.90	272.90
2:30	397.90	264.80	14:30	397.90	275.60
2:45	397.90	262.00	14:45	397.90	275.00
3:00	397.90	261.20	15:00	397.90	273.70
3:15	397.90	260.80	15:15	397.90	264.30
3:30	397.90	259.40	15:30	397.90	261.80
3:45	397.90	259.90	15:45	397.90	267.90
4:00	397.90	262.90	16:00	397.90	275.40
4:15	397.90	262.90	16:15	397.90	279.60
4:30	397.90	259.20	16:30	397.90	281.80
4:45	397.90	263.90	16:45	397.90	288.30
5:00	397.90	262.60	17:00	405.50	288.30
5:15	397.90	268.80	17:15	402.40	291.80
5:30	397.90	279.80	17:30	402.40	289.20
6:45	397.90	291.30	17:45	402.40	292.70
6:00	409.90	294.90	18:00	402.40	304.10
6:15	409.90	302.50	18:15	402.40	307.60
6:30	409.90	308.90	18:30	402.40	310.30
6:45	409.90	308.20	18:45	402.40	316.20
7:00	409.90	307.10	19:00	402.40	322.00
7:15	409.90	303.90	19:15	402.40	326.50
7:30	409.90	298.50	19:30	402.40	324.80
7:45	409.90	296.60	19:45	402.40	321.10
8:00	409.90	293.70	20:00	402.40	316.60
8:15	409.90	286.30	20:15	402.40	319.80
8:30	409.90	285.10	20:30	402.40	310.00
8:45	409.90	284.90	20:45	402.40	283.20
9:00	409.90	285.90	21:00	402.40	282.20
9:15	409.90	284.90	21:15	402.40	287.10
9:30	409.90	285.30	21:30	402.40	293.80
9:45	409.90	282.30	21:45	402.40	282.90
10:00	397.90	281.80	22:00	402.40	280.10
10:15	397.90	278.30	22:15	402.40	275.00
10:30	397.90	279.20	22:30	402.40	272.80
10:45	397.90	277.90	22:45	402.40	265.30
11:00	397.90	276.70	23:00	402.40	262.30
11:15	397.90	278.50	23:15	402.40	265.90
11:30	397.90	280.00	23:30	362.80	264.40
11:45	397.90	286.30	23:45	362.80	264.00

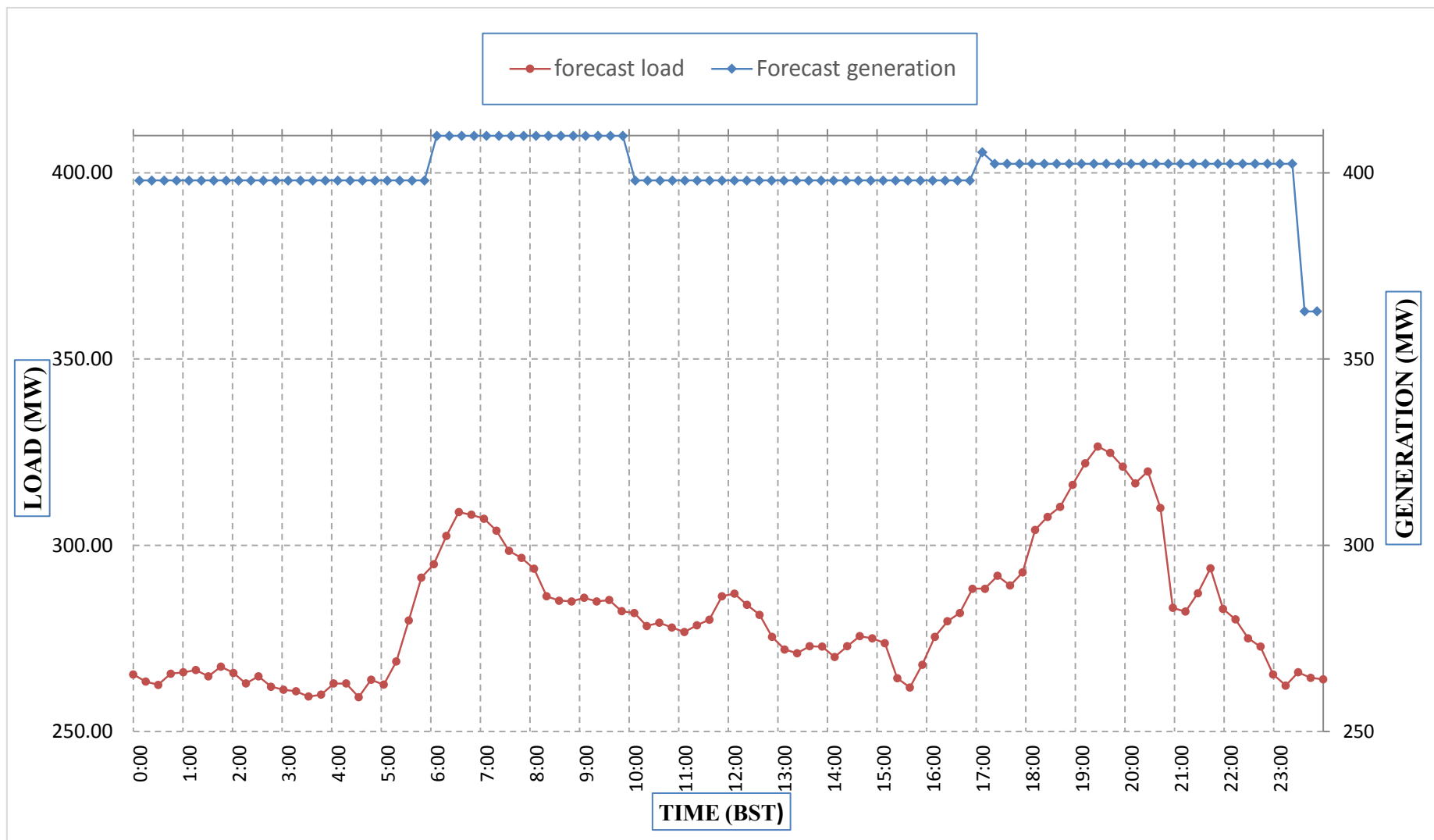
Yours faithfully,
 Tshering Yangzom



Message No.: Enter your message number
 From: Shift In-charge, Control Room

Date: 18-Apr-18
 Time: 11:20

Forecast Generation & Load Forecast for Tomorrow (19-Apr-2018).



Yours faithfully,
 Tshering Yangzom

	MW
Scheduled Peak Generation(19-Apr-2018).	409.90
Forecast Peak Load(19-Apr-2018).	326.50



ཕྱག་ཇུག་ལོ་ལོ་ལོ་ལོ་



Bhutan Power Corporation Ltd.
Bhutan Power System Operator
Thimphu: Bhutan

Message No.: Enter your message number
From: Shift In-charge, Control Room

Date: 18-Apr-18
Time: 11:20

To
Managing Director, BPC. Email: gemtshering@bpc.bt
Director, O&MD, DGPC. Email: director.umd@drukgreen.com
General Manager, TD, BPC. Email: ktobgye@bpc.bt
Advisor, BPC. Email: bharattamang@bpc.bt

Sub: Forecast Generation and Actual Generation of Dagachhu (17-Apr-2018).

Hours (BST)	Actual Frequency	Forecast Generation	Actual Generation	Hours (BST)	Actual Frequency	Forecast Generation	Actual Generation
0:00	49.81	0.00	0.00	12:00	49.92	0.00	0.00
0:15	49.84	0.00	0.00	12:15	49.96	0.00	0.00
0:30	49.88	0.00	0.00	12:30	50.00	0.00	0.00
0:45	49.90	0.00	0.00	12:45	50.00	0.00	0.00
1:00	49.92	0.00	0.00	13:00	50.02	0.00	0.00
1:15	49.89	0.00	0.00	13:15	49.97	0.00	0.00
1:30	49.94	0.00	0.00	13:30	49.91	0.00	0.00
1:45	50.01	0.00	0.00	13:45	49.86	0.00	0.00
2:00	49.98	0.00	0.00	14:00	49.92	0.00	0.00
2:15	49.95	0.00	0.00	14:15	49.88	0.00	0.00
2:30	49.96	0.00	0.00	14:30	49.90	0.00	0.00
2:45	49.96	0.00	0.00	14:45	49.91	0.00	0.00
3:00	49.96	0.00	0.00	15:00	49.91	0.00	0.00
3:15	49.93	0.00	0.00	15:15	49.90	0.00	0.00
3:30	49.97	0.00	0.00	15:30	49.88	0.00	0.00
3:45	50.00	0.00	0.00	15:45	49.88	0.00	0.00
4:00	49.94	0.00	0.00	16:00	49.87	0.00	0.00
4:15	49.99	0.00	0.00	16:15	49.98	0.00	0.00
4:30	49.92	0.00	0.00	16:30	49.93	0.00	0.00
4:45	49.85	0.00	0.00	16:45	49.94	0.00	0.00
5:00	49.94	0.00	0.00	17:00	49.99	0.00	0.00
5:15	49.94	0.00	0.00	17:15	50.03	0.00	0.00
5:30	49.89	0.00	0.00	17:30	50.01	0.00	0.00
6:45	49.96	0.00	0.00	17:45	50.01	0.00	0.00
6:00	49.94	0.00	0.00	18:00	50.03	0.00	0.00
6:15	49.95	0.00	0.00	18:15	50.02	0.00	0.00
6:30	50.00	0.00	0.00	18:30	49.97	0.00	0.00
6:45	50.02	0.00	0.00	18:45	49.98	0.00	0.00
7:00	50.05	0.00	0.00	19:00	49.87	0.00	0.00
7:15	50.01	0.00	0.00	19:15	49.82	0.00	0.00
7:30	49.99	0.00	0.00	19:30	49.80	0.00	0.00
7:45	50.00	0.00	0.00	19:45	49.89	0.00	0.00
8:00	50.00	0.00	0.00	20:00	50.00	0.00	0.00
8:15	49.97	0.00	0.00	20:15	50.02	0.00	0.00
8:30	49.95	0.00	0.00	20:30	49.99	0.00	0.00
8:45	49.98	0.00	0.00	20:45	50.00	0.00	0.00
9:00	49.96	0.00	0.00	21:00	49.97	0.00	0.00
9:15	49.95	0.00	0.00	21:15	49.99	0.00	0.00
9:30	49.94	0.00	0.00	21:30	50.02	0.00	0.00
9:45	49.99	0.00	0.00	21:45	49.98	0.00	0.00
10:00	50.00	0.00	0.00	22:00	49.99	0.00	0.00
10:15	49.90	0.00	0.00	22:15	49.95	0.00	0.00
10:30	49.90	0.00	0.00	22:30	49.95	0.00	0.00
10:45	49.95	0.00	0.00	22:45	49.89	0.00	0.00
11:00	49.94	0.00	0.00	23:00	49.85	0.00	0.00
11:15	49.93	0.00	0.00	23:15	49.84	0.00	0.00
11:30	49.94	0.00	0.00	23:30	49.92	0.00	0.00
11:45	49.97	0.00	0.00	23:45	49.95	0.00	0.00

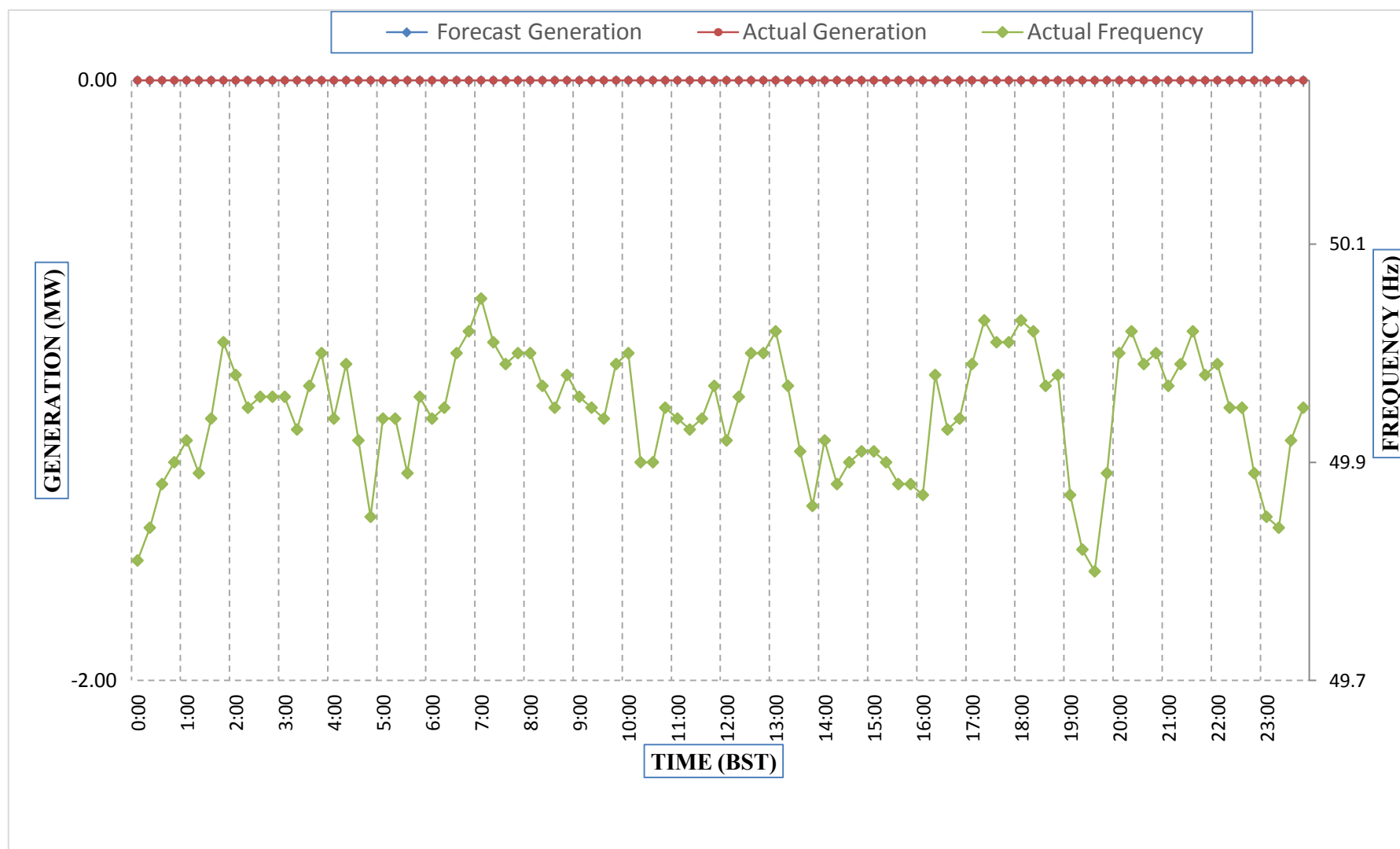
Yours faithfully,
Tshering Yangzom



Message No.: Enter your message number
 From: Shift In-charge, Control Room

Date: 18-Apr-18
 Time: 11:20

Forecast Generation & Actual Generation of Dagachhu(17-Apr-2018).



Yours faithfully,
 Tshering Yangzom