



འབྲུག་གྲོང་མི་ལས་འཛིན།

Bhutan Power Corporation Ltd.
Bhutan Power System Operator
Thimphu: Bhutan



Message No.: Enter your message number
From: Shift In-charge, Control Room

Date: 10-Apr-18
Time: 10:47

To
Managing Director, BPC. Email: gemtshering@bpc.bt
Director, O&MD, DGPC. Email: director.umd@drukgreen.com
General Manager, TD, BPC. Email: ktobgye@bpc.bt
General Manager, DCSD, BPC. Email: sandeeprai@bpc.bt

Sub: **Load Generation Balance Report of Yesterday (09-Apr-2018).**

Hours (BST)	Forecast		Actual		Hours (BST)	Forecast		Actual	
	Generation	Load	Generation	Load		Generation	Load	Generation	Load
0:00	323.50	254.80	360.77	258.56	12:00	323.50	275.60	367.50	264.02
0:15	323.50	252.80	360.52	256.89	12:15	323.50	273.10	352.11	257.29
0:30	323.50	253.30	360.66	260.20	12:30	323.50	274.00	352.54	269.36
0:45	323.50	254.30	363.06	261.77	12:45	323.50	269.70	356.20	270.56
1:00	323.50	254.70	360.77	262.27	13:00	323.50	270.20	359.48	251.16
1:15	323.50	250.60	360.52	260.45	13:15	323.50	266.10	360.49	258.31
1:30	323.50	250.90	362.07	251.47	13:30	323.50	268.40	360.70	259.75
1:45	323.50	251.30	363.27	246.47	13:45	323.50	264.40	358.02	259.74
2:00	323.50	250.70	361.92	253.09	14:00	323.50	264.10	357.70	258.51
2:15	323.50	253.30	362.61	260.98	14:15	323.50	265.20	356.59	255.51
2:30	323.50	253.40	362.87	261.41	14:30	323.50	264.40	358.63	253.50
2:45	323.50	252.70	363.94	256.59	14:45	323.50	268.20	358.00	251.92
3:00	323.50	249.40	358.66	253.14	15:00	323.50	258.30	358.76	251.54
3:15	323.50	251.10	357.22	250.59	15:15	323.50	262.10	357.79	247.41
3:30	323.50	251.00	354.77	252.99	15:30	323.50	266.00	357.80	237.23
3:45	323.50	251.90	356.10	256.00	15:45	323.50	265.00	357.80	242.11
4:00	323.50	254.10	354.96	255.64	16:00	323.50	272.50	357.98	249.84
4:15	323.50	253.30	355.03	251.90	16:15	323.50	272.70	352.28	256.62
4:30	323.50	255.40	356.06	252.58	16:30	323.50	275.70	356.94	263.04
4:45	323.50	255.20	355.39	253.36	16:45	323.50	279.10	356.91	259.92
5:00	323.50	257.30	355.27	252.25	17:00	323.50	280.80	355.73	265.20
5:15	323.50	259.20	355.20	261.32	17:15	323.50	281.30	355.87	254.50
5:30	323.50	269.00	356.60	268.40	17:30	323.50	282.80	355.11	264.08
5:45	323.50	279.60	354.90	274.20	17:45	323.50	285.80	356.68	267.34
6:00	323.50	289.50	355.73	281.79	18:00	323.50	288.50	354.23	275.15
6:15	323.50	295.90	355.66	292.80	18:15	323.50	293.00	354.14	278.98
6:30	323.50	301.90	354.35	300.48	18:30	323.50	301.90	353.26	285.57
6:45	323.50	301.30	355.66	304.62	18:45	323.50	310.20	352.77	284.60
7:00	323.50	296.60	354.12	302.52	19:00	323.50	314.00	353.37	296.66
7:15	323.50	295.00	354.04	304.40	19:15	323.50	312.90	350.51	288.66
7:30	323.50	290.20	354.36	306.04	19:30	323.50	311.40	352.28	294.70
7:45	323.50	288.40	349.36	298.84	19:45	323.50	309.50	351.55	294.91
8:00	323.50	284.10	352.95	292.99	20:00	323.50	307.70	350.78	289.22
8:15	323.50	279.50	351.58	267.90	20:15	323.50	304.20	349.47	292.52
8:30	323.50	276.80	352.12	270.63	20:30	323.50	300.90	349.56	292.52
8:45	323.50	276.30	353.25	268.95	20:45	323.50	296.60	349.19	286.38
9:00	323.50	276.20	354.45	273.98	21:00	323.50	290.90	350.53	284.63
9:15	323.50	275.40	354.77	260.79	21:15	323.50	283.50	347.84	278.15
9:30	323.50	274.00	364.37	244.27	21:30	323.50	281.90	348.02	274.89
9:45	323.50	272.10	364.57	254.11	21:45	323.50	277.40	347.11	261.38
10:00	323.50	269.70	366.95	249.24	22:00	323.50	274.60	348.47	263.17
10:15	323.50	270.40	366.08	261.21	22:15	323.50	272.30	348.58	256.13
10:30	323.50	270.40	369.04	262.75	22:30	323.50	271.00	348.27	246.04
10:45	323.50	270.90	368.53	262.06	22:45	323.50	265.20	350.04	256.05
11:00	323.50	271.90	369.36	260.78	23:00	323.50	260.90	348.49	248.89
11:15	323.50	275.00	370.20	249.75	23:15	323.50	263.00	347.74	249.74
11:30	323.50	274.70	368.36	251.97	23:30	323.50	260.10	348.71	249.75
11:45	323.50	274.00	367.83	259.63	23:45	323.50	261.60	348.74	252.80

Yours faithfully
Tshering Yangzom

Coincidental peak load of Day(Last year):	
278.60 MW	9-Apr-17
Maximum Load till date:	
375.23 MW	24-Feb-18



འབྲུག་གྲོག་མེ་ལས་འཛིན།

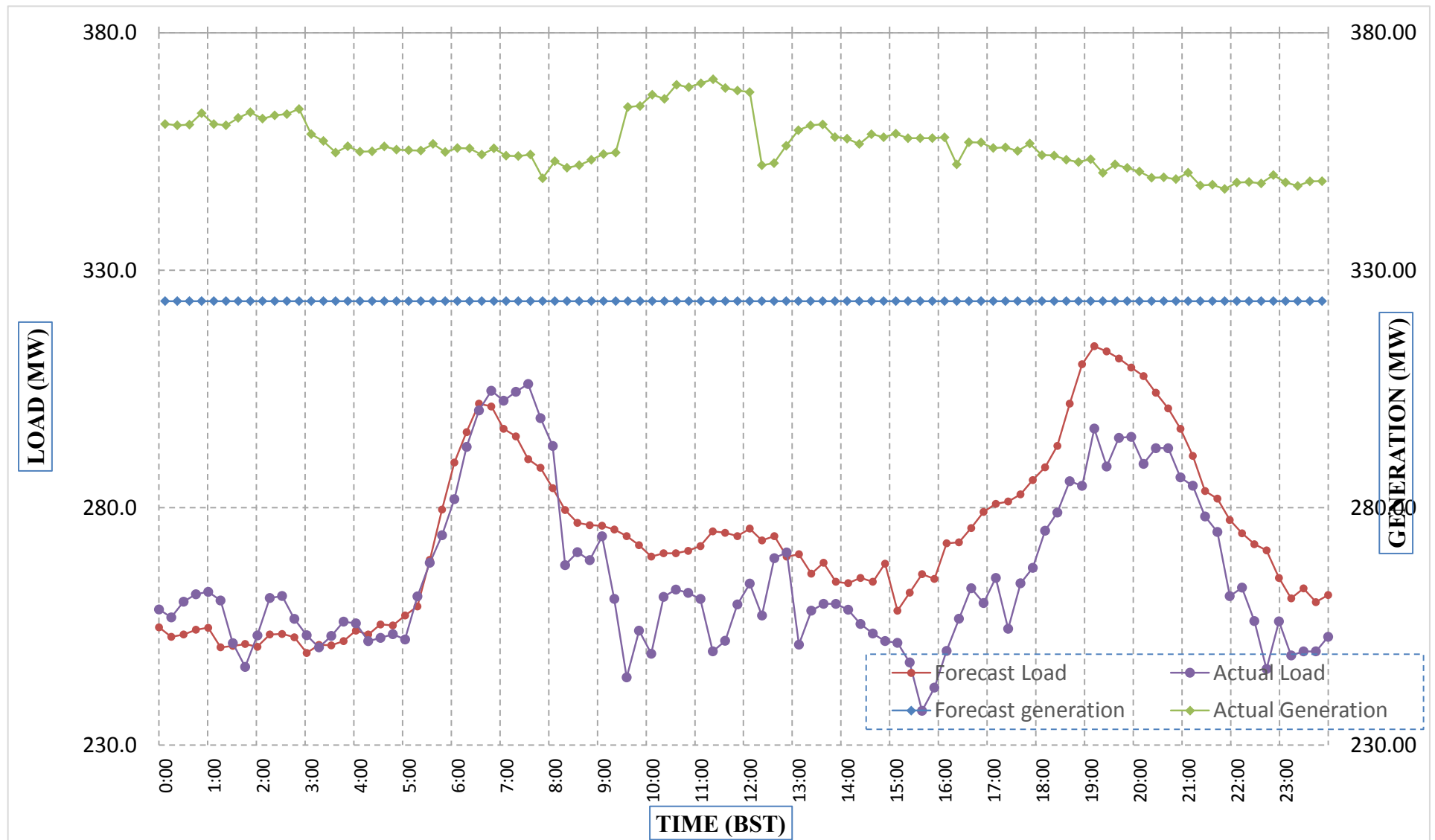
Bhutan Power Corporation Ltd.
 Bhutan Power System Operator
 Thimphu: Bhutan



Message No.: Enter your message number
 From: Shift In-charge, Control Room

Date: 10-Apr-18
 Time: 10:47

Forecast Generation & Load with Actual Generation & Load (09-Apr-2018).



Yours faithfully,
 Tshering Yangzom

	MW	Coincidental peak load of Day(Last year):	
Peak Co-incident Generation(09-Apr-2018).	370.20	278.60 MW	9-Apr-17
Peak Co-incident Load(09-Apr-2018).	306.04	Maximum Load till date:	
		375.23 MW	24-Feb-18

Telephone: +975-02335631; Fax: +975-02335632; Email: bhutansystemoperator@bpc.bt; www.bpc.bt



ཕྱག་ལུགས་ལྷན་ཁུངས་ལྷན་ཁུངས་།

Bhutan Power Corporation Ltd.
Bhutan Power System Operator
Thimphu: Bhutan



Message No.: Enter your message number
From: Shift In-charge, Control Room

Date: 10-Apr-18
Time: 10:47

To
Managing Director, BPC. Email: gemtshering@bpc.bt
Director, O&MD, DGPC. Email: director.omb@drukgreen.com
General Manager, TD, BPC. Email: thinleygyeltshen@bpc.bt
General Manager, DCSD, BPC. Email: sandeeprai@bpc.bt

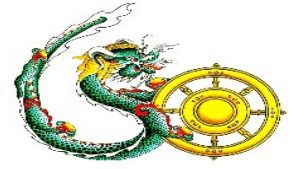
Sub: Load Generation Balance Report of Today (10-Apr-2018).

Hours (BST)	Forecast		Actual	
	Generation	Load	Generation	Load
0:00	328.90	258.70	348.18	257.65
0:15	328.90	257.40	347.43	258.47
0:30	328.90	257.70	348.65	255.04
0:45	328.90	258.00	345.68	253.43
1:00	328.90	258.70	343.83	254.83
1:15	328.90	256.00	341.66	246.21
1:30	328.90	256.10	339.10	251.79
1:45	328.90	256.40	329.28	259.24
2:00	328.90	256.30	330.80	257.28
2:15	328.90	258.40	329.12	260.30
2:30	328.90	259.00	327.57	252.53
2:45	328.90	258.60	327.67	254.70
3:00	328.90	256.10	329.67	240.19
3:15	328.90	257.10	318.92	253.90
3:30	328.90	256.80	318.32	258.41
3:45	328.90	257.60	317.98	258.80
4:00	328.90	259.70	318.85	264.85
4:15	328.90	259.90	318.63	254.84
4:30	328.90	261.80	319.57	253.48
4:45	328.90	262.00	317.48	265.59
5:00	328.90	262.70	318.59	260.34
5:15	328.90	264.50	318.84	266.53
5:30	328.90	271.90	316.87	272.44
5:45	328.90	279.30	318.41	283.05
6:00	328.90	287.70	319.08	284.51
6:15	328.90	292.30	318.92	295.16
6:30	328.90	296.70	318.80	288.27
6:45	328.90	295.80	318.16	308.54
7:00	328.90	292.30	317.20	301.71
7:15	328.90	290.90	323.38	307.09
7:30	328.90	285.50	320.85	296.45
7:45	328.90	283.80	318.57	288.28
8:00	328.90	280.70	320.15	287.10
8:15	328.90	277.30	300.75	280.96
8:30	328.90	275.30	296.50	287.45
8:45	328.90	274.70	295.53	289.43
9:00	328.90	274.40	296.00	281.25

Yours faithfully,
Tshering Yangzom

Coincidental peak load of Day(Last year):	
306.18	10-Apr-17

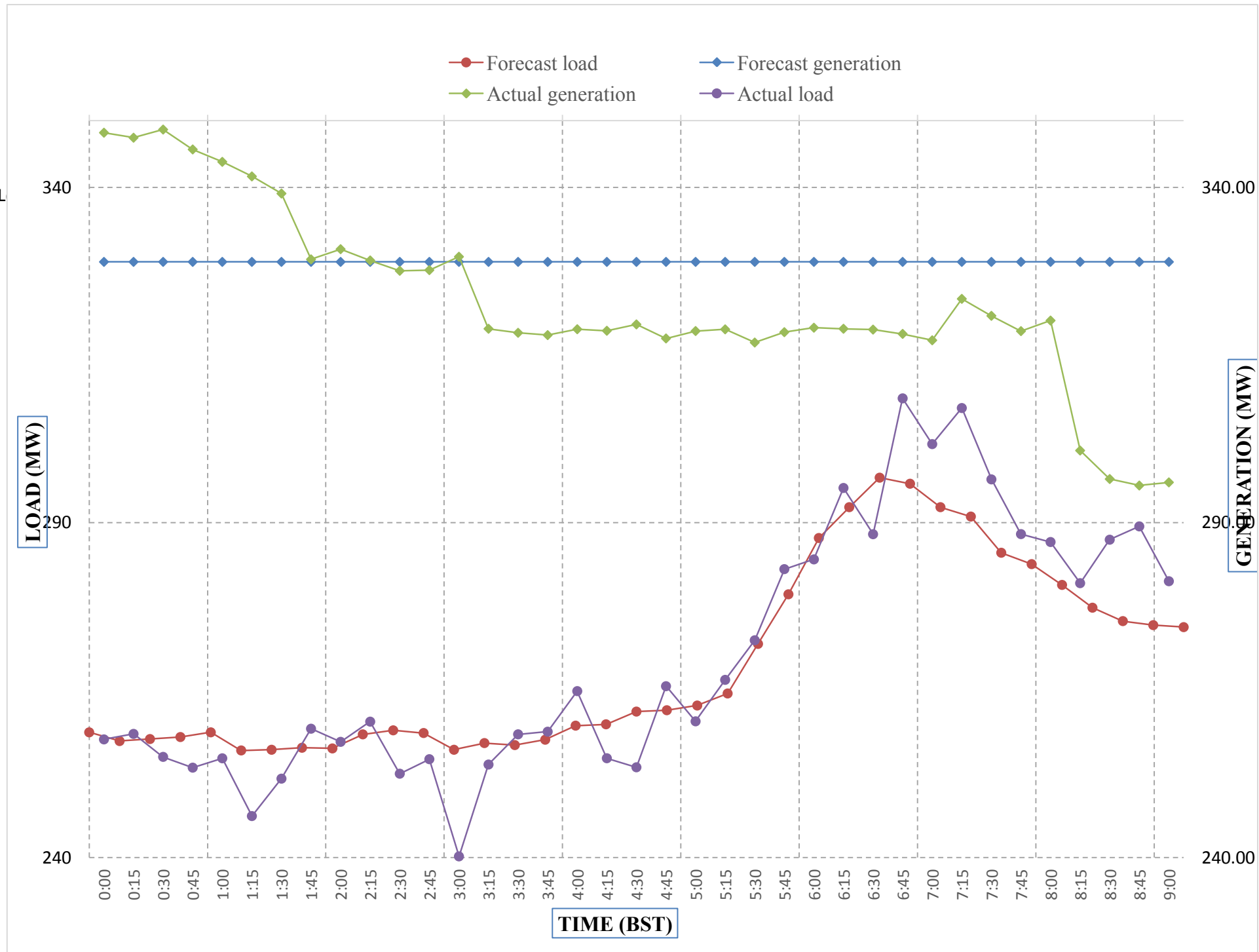
Maximum Load till date:	
375.23 MW	24-Feb-18



Message No.: Enter your message number
 From: Shift In-charge, Control Room

4/5/2018 11:18 10-Apr-18
 4/5/2018 11:18 10:47

Forecast Generation & Load with Actual Generation & Load of Today from 00:00hrs to 09:00hrs(10-Apr-2018).



Yours faithfully
 Tshering Yangzom

Coincidental peak load of	
306.18	10-Apr-17
Maximum Load till date:	
375.23 MW	24-Feb-18



འབྲུག་གྲོག་ལེ་ལས་འཛིན།
Bhutan Power Corporation Ltd.
Bhutan Power System Operator
 Thimphu: Bhutan



Message No.: Enter your message number **Date:** 10-Apr-18
From: Shift In-charge, Control Room **Time:** 10:47

To
 Managing Director, BPC. Email: gemtshering@bpc.bt
 Director, O&MD, DGPC. Email: director.umd@drukgreen.com
 General Manager, TD, BPC. Email: ktobgye@bpc.bt
 Advisor, BPC. Email: bharattamang@bpc.bt

Sub: Load Generation Balance Report of Tomorrow (11-Apr-2018).

Hours (BST)	Forecast		Hours (BST)	Forecast	
	Generation	Load		Generation	Load
0:00	328.90	258.70	12:00	324.30	278.50
0:15	328.90	257.40	12:15	323.30	276.10
0:30	328.90	257.70	12:30	323.30	276.90
0:45	328.90	258.00	12:45	323.30	271.40
1:00	328.90	258.70	13:00	323.30	273.30
1:15	328.90	256.00	13:15	323.30	270.80
1:30	328.90	256.10	13:30	323.30	271.70
1:45	328.90	256.40	13:45	323.30	268.20
2:00	328.90	256.30	14:00	323.30	269.20
2:15	328.90	258.40	14:15	323.30	270.30
2:30	328.90	259.00	14:30	323.30	264.90
2:45	328.90	258.60	14:45	323.30	270.80
3:00	328.90	256.10	15:00	323.20	264.40
3:15	328.90	257.10	15:15	323.20	267.50
3:30	328.90	256.80	15:30	323.20	269.90
3:45	328.90	257.60	15:45	323.20	270.30
4:00	328.90	259.70	16:00	323.20	275.40
4:15	328.90	259.90	16:15	323.20	277.00
4:30	328.90	261.80	16:30	323.20	280.30
4:45	328.90	262.00	16:45	323.20	282.40
5:00	328.90	262.70	17:00	323.20	284.20
5:15	328.90	264.50	17:15	323.20	284.80
5:30	328.90	271.90	17:30	323.20	286.50
6:45	328.90	279.30	17:45	323.20	288.70
6:00	328.90	287.70	18:00	323.20	291.90
6:15	328.90	292.30	18:15	323.20	298.30
6:30	328.90	296.70	18:30	323.20	307.10
6:45	328.90	295.80	18:45	323.20	312.40
7:00	328.90	292.30	19:00	323.20	321.00
7:15	328.90	290.90	19:15	328.80	318.90
7:30	328.90	285.50	19:30	328.80	319.80
7:45	328.90	283.80	19:45	328.80	316.40
8:00	328.90	280.70	20:00	328.90	313.60
8:15	328.90	277.30	20:15	328.90	310.10
8:30	328.90	275.30	20:30	328.90	306.70
8:45	328.90	274.70	20:45	328.90	302.30
9:00	328.90	274.40	21:00	328.90	296.30
9:15	324.30	274.10	21:15	328.90	289.60
9:30	324.30	271.00	21:30	328.90	284.90
9:45	324.30	269.90	21:45	328.90	282.00
10:00	324.30	268.00	22:00	328.90	278.50
10:15	324.30	268.60	22:15	328.90	275.70
10:30	324.30	269.30	22:30	328.90	273.60
10:45	324.30	270.50	22:45	328.90	266.80
11:00	324.30	271.20	23:00	328.90	264.30
11:15	324.30	274.00	23:15	328.90	262.80
11:30	324.30	273.60	23:30	328.90	258.10
11:45	324.30	273.10	23:45	328.90	260.30

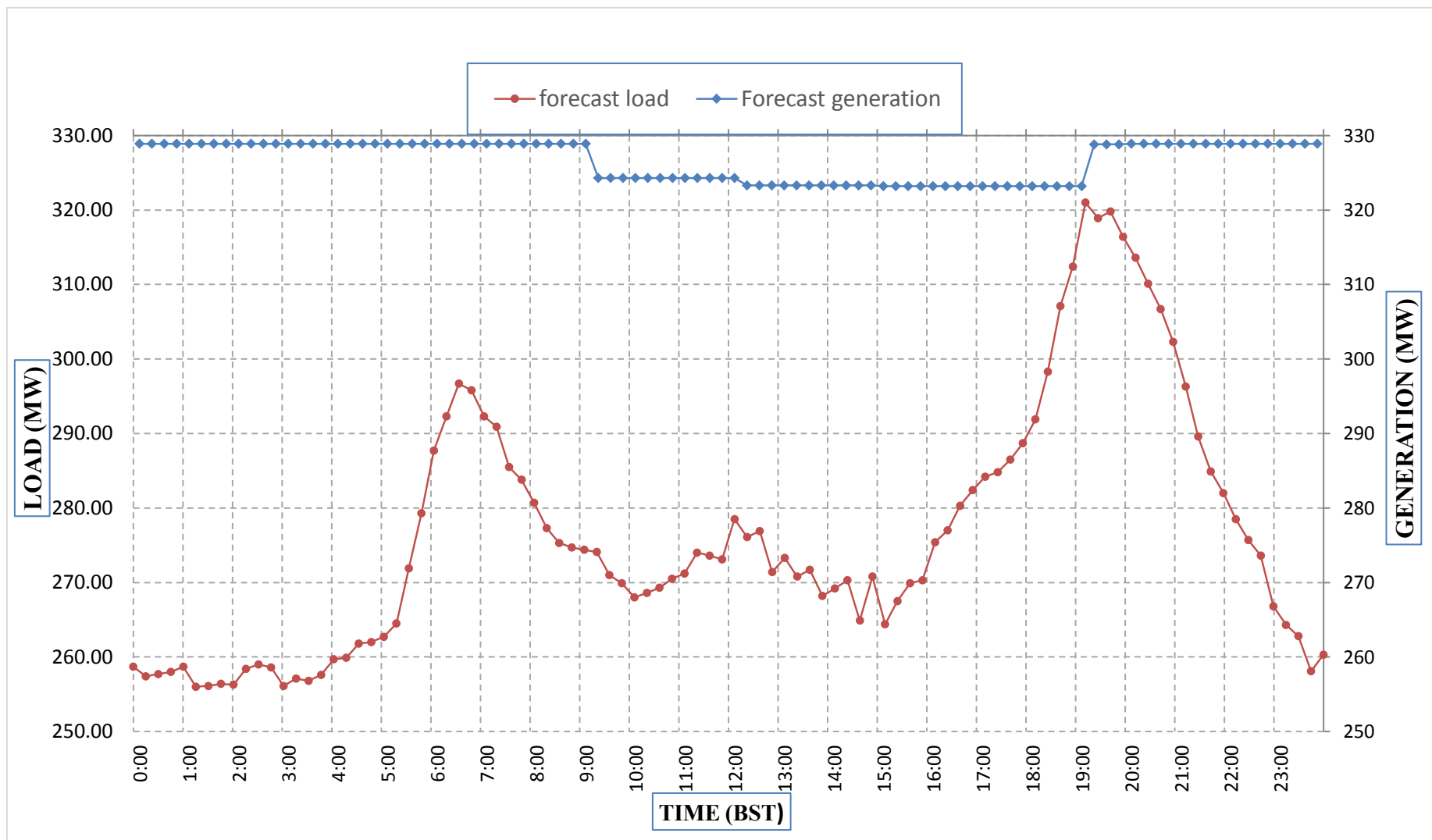
Yours faithfully,
 Tshering Yangzom



Message No.: Enter your message number
From: Shift In-charge, Control Room

Date: 10-Apr-18
Time: 10:47

Forecast Generation & Load Forecast for Tomorrow (11-Apr-2018).



Yours faithfully,
 Tshering Yangzom

	MW
Scheduled Peak Generation(11-Apr-2018).	328.90
Forecast Peak Load(11-Apr-2018).	321.00



འབྲུག་གྲོང་ཁའི་ལྷན་ཁག་གི་འགན་འཁུར་ལཱ་ཁང་།

Bhutan Power Corporation Ltd.
Bhutan Power System Operator
Thimphu: Bhutan



Message No.:

Enter your message number

Date: 10-Apr-18

From:

Shift In-charge, Control Room

Time: 10:47

To

Managing Director, BPC. Email: gemtshering@bpc.bt
Director, O&MD, DGPC. Email: director.umd@drukgreen.com
General Manager, TD, BPC. Email: ktobgye@bpc.bt
Advisor, BPC. Email: bharattamang@bpc.bt

Sub:

Forecast Generation and Actual Generation of Dagachhu (09-Apr-2018).

Hours (BST)	Actual Frequency	Forecast Generation	Actual Generation	Hours (BST)	Actual Frequency	Forecast Generation	Actual Generation
0:00	49.99	18.00	15.96	12:00	49.95	18.00	16.46
0:15	49.96	18.00	15.95	12:15	49.97	18.00	16.47
0:30	49.98	18.00	15.98	12:30	49.97	18.00	16.46
0:45	50.00	18.00	17.01	12:45	49.94	18.00	16.49
1:00	49.97	18.00	16.97	13:00	49.98	18.00	16.45
1:15	50.03	18.00	16.95	13:15	49.98	18.00	16.48
1:30	50.02	18.00	17.99	13:30	49.91	18.00	16.46
1:45	50.02	18.00	17.96	13:45	49.88	18.00	16.47
2:00	49.99	18.00	17.95	14:00	49.92	18.00	16.46
2:15	49.96	18.00	17.98	14:15	49.92	18.00	16.45
2:30	49.95	18.00	17.98	14:30	49.93	18.00	16.48
2:45	49.96	18.00	17.95	14:45	49.96	18.00	16.45
3:00	49.95	18.00	17.98	15:00	49.94	18.00	16.45
3:15	49.95	18.00	18.01	15:15	49.96	18.00	16.45
3:30	49.96	18.00	17.96	15:30	49.97	18.00	16.46
3:45	49.98	18.00	17.96	15:45	49.99	18.00	16.46
4:00	49.96	18.00	17.97	16:00	50.00	18.00	16.47
4:15	50.00	18.00	17.98	16:15	50.03	18.00	16.43
4:30	50.00	18.00	17.99	16:30	49.98	18.00	16.48
4:45	49.97	18.00	17.98	16:45	49.99	18.00	16.44
5:00	49.98	18.00	18.03	17:00	49.99	18.00	16.47
5:15	49.99	18.00	17.97	17:15	49.99	18.00	16.45
5:30	49.96	18.00	17.99	17:30	49.94	18.00	16.42
6:45	50.02	18.00	17.96	17:45	49.94	18.00	16.45
6:00	50.01	18.00	17.98	18:00	49.96	18.00	16.08
6:15	50.01	18.00	18.00	18:15	49.99	18.00	16.24
6:30	50.04	18.00	17.96	18:30	50.05	18.00	16.28
6:45	50.09	18.00	17.98	18:45	49.98	18.00	16.27
7:00	50.10	18.00	17.98	19:00	49.98	18.00	16.27
7:15	50.09	18.00	17.99	19:15	49.93	18.00	16.27
7:30	50.07	18.00	17.01	19:30	49.97	18.00	16.27
7:45	50.05	18.00	14.98	19:45	50.00	18.00	16.29
8:00	50.03	18.00	16.24	20:00	50.02	18.00	16.26
8:15	50.00	18.00	16.26	20:15	50.00	18.00	16.27
8:30	49.98	18.00	16.48	20:30	49.95	18.00	16.28
8:45	49.98	18.00	16.51	20:45	49.97	18.00	16.28
9:00	49.95	18.00	17.00	21:00	49.97	18.00	16.28
9:15	49.95	18.00	16.98	21:15	49.97	18.00	16.28
9:30	49.98	18.00	17.00	21:30	49.94	18.00	16.28
9:45	49.98	18.00	16.99	21:45	49.88	18.00	16.29
10:00	49.97	18.00	17.00	22:00	49.87	18.00	16.30
10:15	49.95	18.00	17.00	22:15	49.83	18.00	16.26
10:30	50.00	18.00	16.99	22:30	49.83	18.00	16.25
10:45	50.02	18.00	17.02	22:45	49.82	18.00	16.27
11:00	49.96	18.00	16.98	23:00	49.96	18.00	16.27
11:15	49.99	18.00	16.99	23:15	49.89	18.00	16.26
11:30	49.98	18.00	16.99	23:30	49.93	18.00	16.25
11:45	49.98	18.00	16.98	23:45	50.00	18.00	16.27

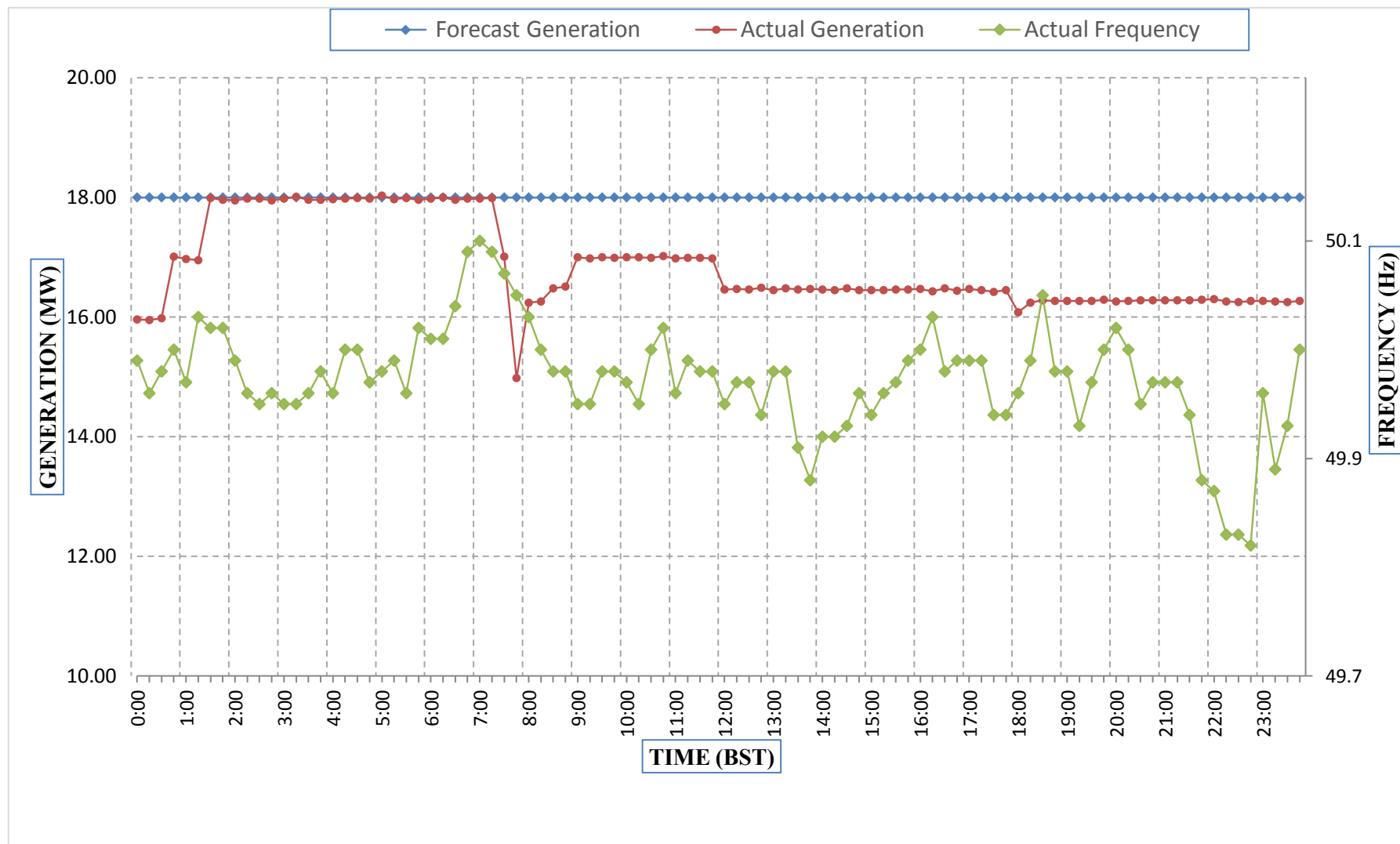
Yours faithfully,
Tshering Yangzom



Message No.: Enter your message number
 From: Shift In-charge, Control Room

Date: 7-Apr-18
 Time: 10:00

Forecast Generation & Actual Generation of Dagachhu(06-Apr-2018).



Yours faithfully,
 Tshering Yangzom