



ཕྱག་ལུག་གྲོག་མེ་ལས་འཛིན།
Bhutan Power Corporation Ltd.
Bhutan Power System Operator
Thimphu: Bhutan



Message No.: Enter your message number
From: Shift In-charge, Control Room

Date: 9-Apr-18
Time: 10:55

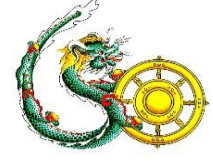
To
 Managing Director, BPC. Email: gemtsshering@bpc.bt
 Director, O&MD, DGPC. Email: director.omb@drukgreen.com
 General Manager, TD, BPC. Email: ktobgye@bpc.bt
 General Manager, DCSD, BPC. Email: sandeeprai@bpc.bt

Sub: **Load Generation Balance Report of Yesterday (08-Apr-2018).**

Hours (BST)	Forecast		Actual		Hours (BST)	Forecast		Actual	
	Generation	Load	Generation	Load		Generation	Load	Generation	Load
00:00	266.70	250.50	281.27	9.69	12:00	266.70	275.40	326.71	46.54
00:15	266.70	248.00	281.32	7.70	12:15	266.70	272.80	346.51	54.15
00:30	266.70	249.00	281.30	7.71	12:30	266.70	274.00	345.65	53.50
00:45	266.70	250.40	281.35	9.55	12:45	266.70	268.90	351.81	64.99
01:00	266.70	251.60	281.35	8.42	13:00	266.70	270.00	349.42	62.82
01:15	266.70	250.00	281.35	7.67	13:15	266.70	263.80	350.76	59.55
01:30	266.70	250.80	281.40	7.38	13:30	266.70	267.50	350.01	63.43
01:45	266.70	250.60	281.40	6.63	13:45	266.70	263.10	351.59	63.70
02:00	266.70	251.10	281.40	5.96	14:00	266.70	262.10	352.49	59.09
02:15	266.70	251.30	281.41	4.51	14:15	266.70	263.40	351.23	59.04
02:30	266.70	252.30	281.49	3.13	14:30	266.70	263.60	350.96	74.46
02:45	266.70	250.80	281.45	2.86	14:45	266.70	266.00	350.97	69.27
03:00	266.70	245.20	281.52	3.25	15:00	266.70	255.80	351.88	58.96
03:15	266.70	246.20	281.16	4.63	15:15	266.70	257.70	361.31	67.52
03:30	266.70	247.20	297.18	20.77	15:30	266.70	262.20	363.08	71.72
03:45	266.70	246.60	297.07	20.17	15:45	266.70	260.60	364.07	69.76
04:00	266.70	250.30	297.19	19.42	16:00	266.70	268.60	362.96	76.18
04:15	266.70	250.10	297.14	15.15	16:15	266.70	268.80	363.23	64.78
04:30	266.70	253.60	297.10	13.60	16:30	266.70	272.70	364.25	65.15
04:45	266.70	251.70	297.10	14.61	16:45	266.70	276.60	364.10	64.80
05:00	266.70	253.70	297.13	14.87	17:00	282.70	278.30	363.13	59.00
05:15	266.70	256.50	297.16	13.02	17:15	282.70	278.30	361.12	56.79
05:30	266.70	263.70	296.41	11.18	17:30	282.70	279.50	362.90	60.03
05:45	266.70	274.20	296.96	12.25	17:45	282.70	284.30	363.41	69.17
06:00	282.70	284.30	297.05	9.94	18:00	282.70	288.50	362.42	47.43
06:15	282.70	290.40	297.57	9.88	18:15	282.70	294.80	364.43	43.03
06:30	282.70	296.30	297.66	11.00	18:30	282.70	304.50	363.86	33.20
06:45	282.70	293.60	296.92	9.97	18:45	282.70	311.70	361.72	31.71
07:00	282.70	290.70	297.70	9.94	19:00	282.70	315.00	360.93	15.15
07:15	282.70	287.90	297.82	10.49	19:15	282.70	315.70	362.98	12.47
07:30	282.70	283.70	297.66	17.48	19:30	282.70	313.10	364.20	16.17
07:45	282.70	280.20	297.69	18.00	19:45	282.70	309.50	364.32	25.50
08:00	282.70	275.50	297.68	20.45	20:00	282.70	306.70	363.00	32.86
08:15	282.70	272.30	297.70	17.88	20:15	282.70	301.90	363.29	35.99
08:30	282.70	270.80	297.65	18.81	20:30	282.70	297.70	363.80	36.73
08:45	282.70	269.20	297.70	20.17	20:45	282.70	292.30	364.31	42.20
09:00	282.70	268.80	297.61	21.02	21:00	282.70	288.10	363.87	44.50
09:15	282.70	272.30	297.70	20.20	21:15	266.70	283.10	363.62	44.29
09:30	282.70	269.50	297.62	28.12	21:30	266.70	282.30	359.23	53.50
09:45	282.70	267.50	297.80	27.83	21:45	266.70	276.70	358.31	51.29
10:00	282.70	269.10	297.70	28.35	22:00	266.70	274.40	359.87	61.81
10:15	266.70	269.50	297.66	28.51	22:15	266.70	270.70	361.05	67.88
10:30	266.70	266.60	310.43	38.25	22:30	266.70	268.90	361.59	70.38
10:45	266.70	268.90	310.51	34.23	22:45	266.70	262.10	359.83	75.78
11:00	266.70	268.40	310.36	35.72	23:00	266.70	257.60	361.23	77.44
11:15	266.70	272.50	310.29	33.73	23:15	266.70	258.60	361.81	90.41
11:30	266.70	274.30	310.23	33.87	23:30	266.70	254.60	361.16	93.57
11:45	266.70	274.90	310.16	33.41	23:45	266.70	256.30	360.52	98.85

Yours faithfully
 Tshering Yangzom

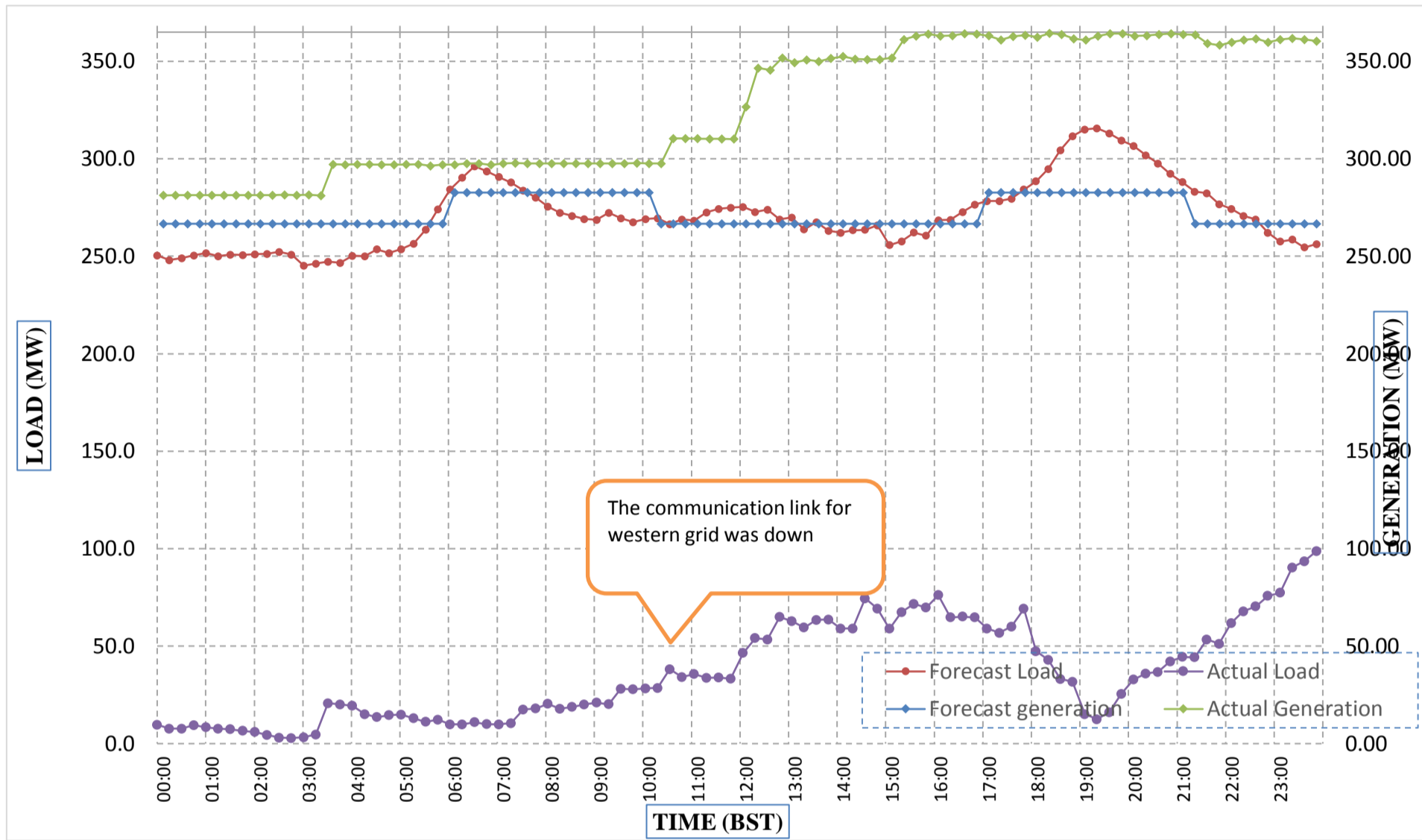
Coincidental peak load of Day (Last year):	
289.93 MW	8-Apr-17
Maximum Load till date:	
375.23 MW	24-Feb-18



Message No.: Enter your message number
From: Shift In-charge, Control Room

Date: 7-Apr-18
Time: 10:00

Forecast Generation & Load with Actual Generation & Load (06-Apr-2018).



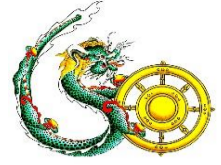
Yours faithfully,
 Tshering Yangzom

	MW	Coincidental peak load of Day(Last year):	
Peak Co-incident Generation(06-Apr-2018).	364.43	289.93 MW	8-Apr-17
Peak Co-incident Load(06-Apr-2018).	98.85		
		Maximum Load till date:	
		375.23 MW	24-Feb-18



འབྲུག་གློག་ལེ་ལས་འཛིན།

Bhutan Power Corporation Ltd.
Bhutan Power System Operator
Thimphu: Bhutan



Message No.: Enter your message number
From: Shift In-charge, Control Room

Date: 9-Apr-18
Time: 10:55

To

Managing Director, BPC. Email: gemtshering@bpc.bt
Director, O&MD, DGPC. Email: director.omb@drukgreen.com
General Manager, TD, BPC. Email: thinleygyeltshen@bpc.bt
General Manager, DCSD, BPC. Email: sandeeprai@bpc.bt

Sub: Load Generation Balance Report of Today (09-Apr-2018).

Hours (BST)	Forecast		Actual	
	Generation	Load	Generation	Load
00:00	323.50	254.80	360.77	258.56
00:15	323.50	252.80	360.52	256.89
00:30	323.50	253.30	360.66	260.20
00:45	323.50	254.30	363.06	261.77
01:00	323.50	254.70	360.77	262.27
01:15	323.50	250.60	360.52	260.45
01:30	323.50	250.90	362.07	251.47
01:45	323.50	251.30	363.27	246.47
02:00	323.50	250.70	361.92	253.09
02:15	323.50	253.30	362.61	260.98
02:30	323.50	253.40	362.87	261.41
02:45	323.50	252.70	363.94	256.59
03:00	323.50	249.40	358.66	253.14
03:15	323.50	251.10	357.22	250.59
03:30	323.50	251.00	354.77	252.99
03:45	323.50	251.90	356.10	256.00
04:00	323.50	254.10	354.96	255.64
04:15	323.50	253.30	355.03	251.90
04:30	323.50	255.40	356.06	252.58
04:45	323.50	255.20	355.39	253.36
05:00	323.50	257.30	355.27	252.25
05:15	323.50	259.20	355.20	261.32
05:30	323.50	269.00	356.60	268.40
05:45	323.50	279.60	354.90	274.20
06:00	323.50	289.50	355.73	281.79
06:15	323.50	295.90	355.66	292.80
06:30	323.50	301.90	354.35	300.48
06:45	323.50	301.30	355.66	304.62
07:00	323.50	296.60	354.12	302.52
07:15	323.50	295.00	354.04	304.40
07:30	323.50	290.20	354.36	306.04
07:45	323.50	288.40	349.36	298.84
08:00	323.50	284.10	352.95	292.99
08:15	323.50	279.50	351.58	267.90
08:30	323.50	276.80	352.12	270.63
08:45	323.50	276.30	353.25	268.95
09:00	323.50	276.20	354.45	273.98

Coincidental peak load of Day(Last year):	
289.93 MW	9-Apr-17

Maximum Load till date:	
375.23 MW	24-Feb-18

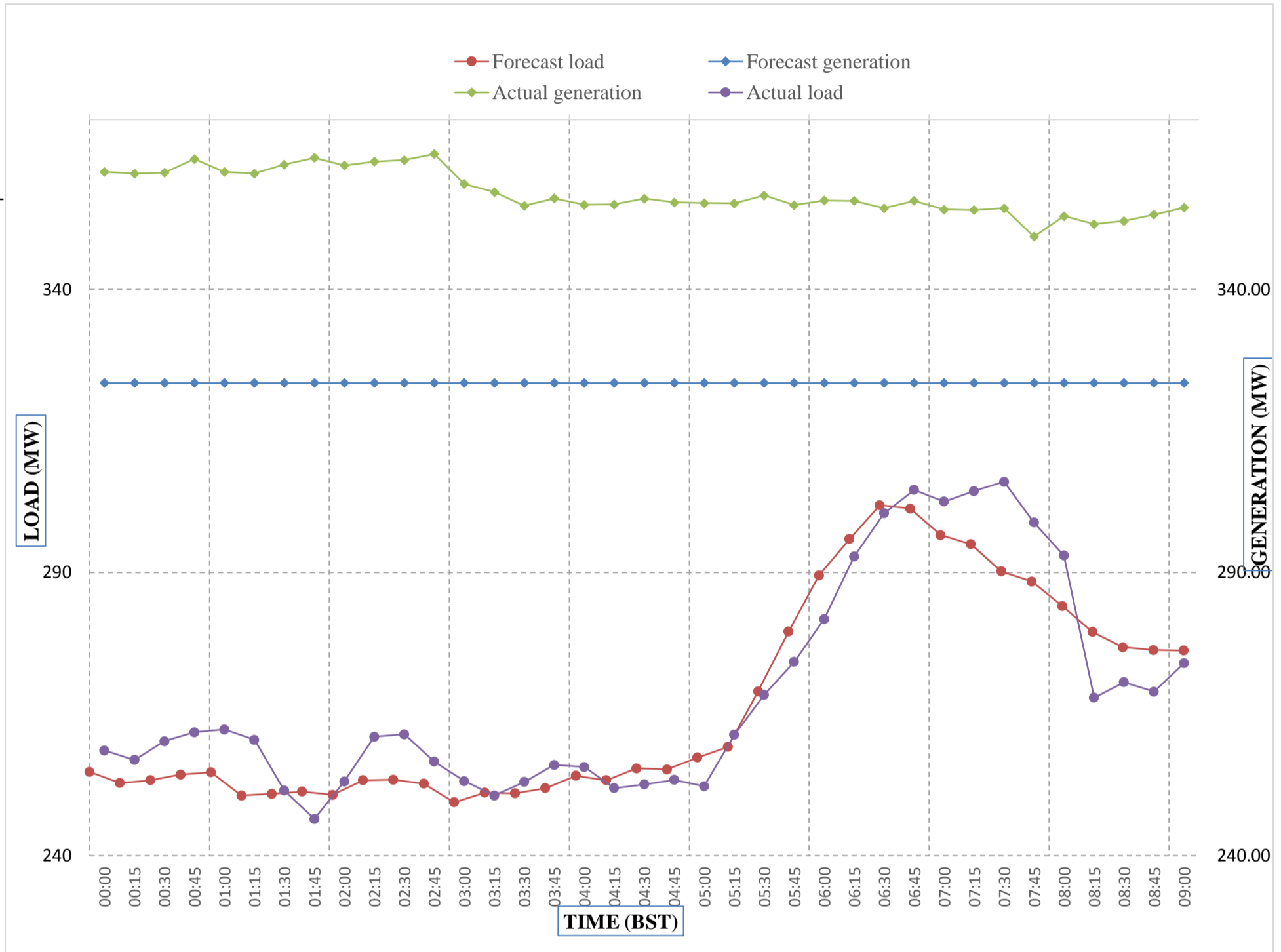
Yours faithfully,
Tshering Yangzom



Message No.: Enter your message number
 From: Shift In-charge, Control Room

05/04/2018 11:18 7-Apr-18
 05/04/2018 11:18 10:00

Forecast Generation & Load with Actual Generation & Load of Today from 00:00hrs to 09:00hrs(07-Apr-2018).



Yours faithfully
 Tshering Yangzom

Coincidental peak load of Day(Last)	
289.93 MW	9-Apr-17
Maximum Load till date:	
375.23 MW	24-Feb-18



འབྲུག་རྒྱལ་ཁོག་གི་འགན་ཁུར་ལྷན་ཁག་།
Bhutan Power Corporation Ltd.
Bhutan Power System Operator
Thimphu: Bhutan



Message No.: Enter your message number **Date:** 9-Apr-18
From: Shift In-charge, Control Room **Time:** 10:55

To
 Managing Director, BPC. Email: gemtshering@bpc.bt
 Director, O&MD, DGPC. Email: director.umd@drukgreen.com
 General Manager, TD, BPC. Email: ktobgye@bpc.bt
 Advisor, BPC. Email: bharattamang@bpc.bt

Sub: Load Generation Balance Report of Tomorrow (10-Apr-2018).

Hours (BST)	Forecast		Hours (BST)	Forecast	
	Generation	Load		Generation	Load
00:00	328.90	70.20	12:00	324.30	45.80
00:15	328.90	71.50	12:15	323.30	47.20
00:30	328.90	71.20	12:30	323.30	46.40
00:45	328.90	70.90	12:45	323.30	51.90
01:00	328.90	70.20	13:00	323.30	50.00
01:15	328.90	72.90	13:15	323.30	52.50
01:30	328.90	72.80	13:30	323.30	51.60
01:45	328.90	72.50	13:45	323.30	55.10
02:00	328.90	72.60	14:00	323.30	54.10
02:15	328.90	70.50	14:15	323.30	53.00
02:30	328.90	69.90	14:30	323.30	58.40
02:45	328.90	70.30	14:45	323.30	52.50
03:00	328.90	72.80	15:00	323.20	58.80
03:15	328.90	71.80	15:15	323.20	55.70
03:30	328.90	72.10	15:30	323.20	53.30
03:45	328.90	71.30	15:45	323.20	52.90
04:00	328.90	69.20	16:00	323.20	47.80
04:15	328.90	69.00	16:15	323.20	46.20
04:30	328.90	67.10	16:30	323.20	42.90
04:45	328.90	66.90	16:45	323.20	40.80
05:00	328.90	66.20	17:00	323.20	39.00
05:15	328.90	64.40	17:15	323.20	38.40
05:30	328.90	57.00	17:30	323.20	36.70
06:45	328.90	49.60	17:45	323.20	34.50
06:00	328.90	41.20	18:00	323.20	31.30
06:15	328.90	36.60	18:15	323.20	24.90
06:30	328.90	32.20	18:30	323.20	16.10
06:45	328.90	33.10	18:45	323.20	10.80
07:00	328.90	36.60	19:00	323.20	2.20
07:15	328.90	38.00	19:15	328.80	9.90
07:30	328.90	43.40	19:30	328.80	9.00
07:45	328.90	45.10	19:45	328.80	12.40
08:00	328.90	48.20	20:00	328.90	15.30
08:15	328.90	51.60	20:15	328.90	18.80
08:30	328.90	53.60	20:30	328.90	22.20
08:45	328.90	54.20	20:45	328.90	26.60
09:00	328.90	54.50	21:00	328.90	32.60
09:15	324.30	50.20	21:15	328.90	39.30
09:30	324.30	53.30	21:30	328.90	44.00
09:45	324.30	54.40	21:45	328.90	46.90
10:00	324.30	56.30	22:00	328.90	50.40
10:15	324.30	55.70	22:15	328.90	53.20
10:30	324.30	55.00	22:30	328.90	55.30
10:45	324.30	53.80	22:45	328.90	62.10
11:00	324.30	53.10	23:00	328.90	64.60
11:15	324.30	50.30	23:15	328.90	66.10
11:30	324.30	50.70	23:30	328.90	70.80
11:45	324.30	51.20	23:45	328.90	68.60

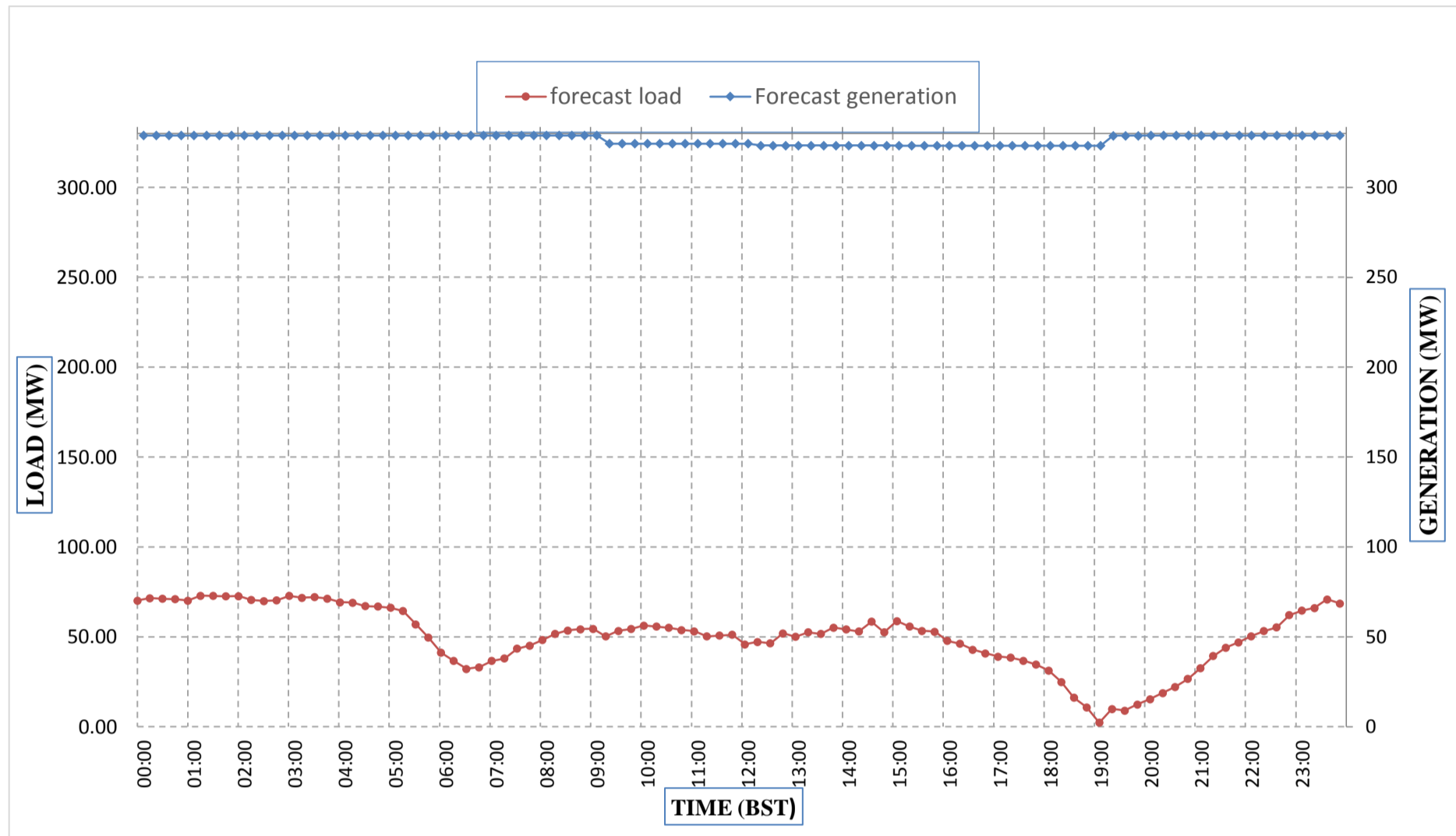
Yours faithfully,
 Tshering Yangzom



Message No.: Enter your message number
 From: Shift In-charge, Control Room

Date: 9-Apr-18
 Time: 10:55

Forecast Generation & Load Forecast for Tomorrow (10-Apr-2018).



Yours faithfully,
 Tshering Yangzom

	MW
Scheduled Peak Generation(10-Apr-2018).	328.90
Forecast Peak Load(10-Apr-2018).	72.90



ཕུག་ལྷན་དུ་བྱེད་པའི་ལྷན་ཁག་།

Bhutan Power Corporation Ltd.
Bhutan Power System Operator
Thimphu: Bhutan



Message No.: Enter your message number
From: Shift In-charge, Control Room

Date: 9-Apr-18
Time: 10:55

To
Managing Director, BPC. Email: gemtshering@bpc.bt
Director, O&MD, DGPC. Email: director.omid@drukgreen.com
General Manager, TD, BPC. Email: ktobgye@bpc.bt
Advisor, BPC. Email: bharattamang@bpc.bt

Sub: Forecast Generation and Actual Generation of Dagachhu (08-Apr-2018).

Hours (BST)	Actual Frequency	Forecast Generation	Actual Generation	Hours (BST)	Actual Frequency	Forecast Generation	Actual Generation
00:00	49.90	15.00	15.90	12:00	50.02	15.00	15.99
00:15	49.96	15.00	15.90	12:15	49.99	15.00	15.99
00:30	49.98	15.00	15.90	12:30	49.93	15.00	16.01
00:45	49.98	15.00	15.90	12:45	50.01	15.00	15.96
01:00	49.96	15.00	15.90	13:00	49.99	15.00	15.99
01:15	49.93	15.00	15.90	13:15	50.03	15.00	16.02
01:30	49.96	15.00	15.90	13:30	50.03	15.00	16.24
01:45	50.00	15.00	15.90	13:45	49.99	15.00	16.26
02:00	49.96	15.00	15.90	14:00	49.99	15.00	16.28
02:15	50.01	15.00	15.90	14:15	49.98	15.00	16.26
02:30	50.04	15.00	15.90	14:30	49.94	15.00	16.26
02:45	50.04	15.00	15.90	14:45	49.93	15.00	16.26
03:00	50.00	15.00	15.90	15:00	49.96	15.00	16.25
03:15	50.03	15.00	15.90	15:15	49.98	15.00	17.01
03:30	50.00	15.00	15.90	15:30	49.94	15.00	17.00
03:45	50.04	15.00	15.90	15:45	49.99	15.00	17.01
04:00	49.96	15.00	15.90	16:00	50.01	15.00	16.80
04:15	50.02	15.00	15.90	16:15	50.00	15.00	16.84
04:30	50.02	15.00	15.90	16:30	50.01	15.00	16.78
04:45	49.98	15.00	15.90	16:45	50.03	15.00	16.92
05:00	49.99	15.00	15.90	17:00	50.06	15.00	16.92
05:15	50.01	15.00	15.90	17:15	50.05	15.00	16.91
05:30	50.02	15.00	15.90	17:30	50.04	15.00	16.88
06:45	50.04	15.00	15.90	17:45	50.00	15.00	16.91
06:00	50.05	15.00	15.90	18:00	50.01	15.00	16.46
06:15	50.03	15.00	15.90	18:15	50.04	15.00	16.47
06:30	50.01	15.00	15.90	18:30	49.99	15.00	16.47
06:45	50.02	15.00	15.90	18:45	49.97	15.00	14.01
07:00	50.03	15.00	15.90	19:00	49.93	15.00	14.00
07:15	50.03	15.00	15.90	19:15	49.93	15.00	16.70
07:30	50.01	15.00	15.90	19:30	49.98	15.00	16.99
07:45	50.03	15.00	15.90	19:45	49.97	15.00	17.01
08:00	50.03	15.00	15.90	20:00	50.00	15.00	17.00
08:15	50.03	15.00	15.90	20:15	49.98	15.00	16.99
08:30	50.00	15.00	15.90	20:30	50.00	15.00	17.00
08:45	50.00	15.00	15.90	20:45	49.99	15.00	16.98
09:00	50.01	15.00	15.90	21:00	49.98	15.00	16.99
09:15	50.05	15.00	15.90	21:15	49.99	15.00	15.98
09:30	50.01	15.00	15.90	21:30	50.00	15.00	15.97
09:45	50.01	15.00	15.90	21:45	49.95	15.00	15.98
10:00	50.01	15.00	15.90	22:00	49.97	15.00	15.98
10:15	49.99	15.00	15.90	22:15	49.90	15.00	15.98
10:30	50.00	15.00	15.90	22:30	49.95	15.00	15.96
10:45	50.00	15.00	15.90	22:45	50.00	15.00	15.96
11:00	50.01	15.00	15.90	23:00	49.97	15.00	15.95
11:15	49.97	15.00	15.90	23:15	50.00	15.00	15.98
11:30	49.98	15.00	15.90	23:30	49.91	15.00	15.96
11:45	50.00	15.00	15.90	23:45	50.00	15.00	15.98

Yours faithfully,
Tshering Yangzom



འབྲུག་གྲོག་མེ་ལས་འཛིན།

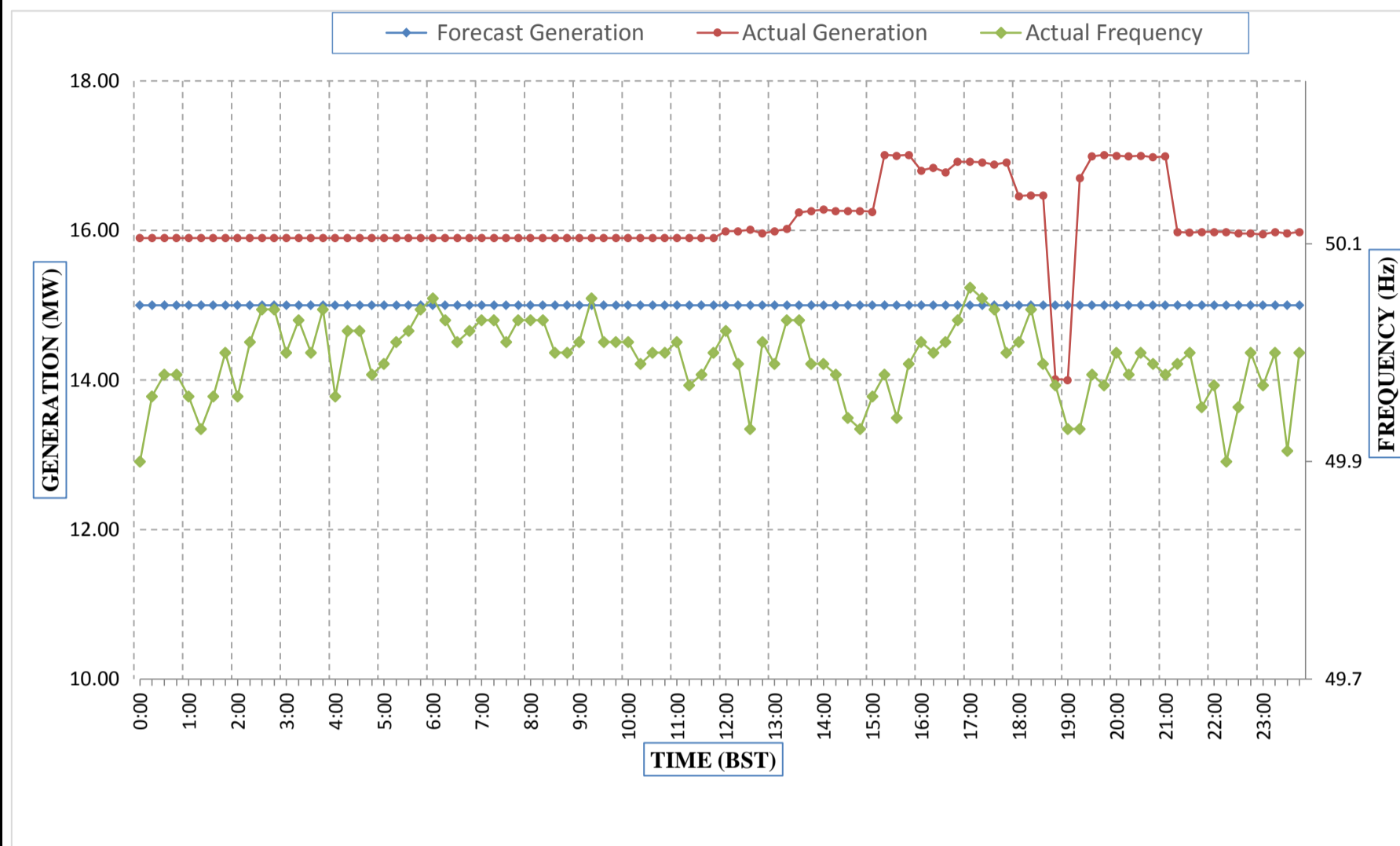
Bhutan Power Corporation Ltd.
Bhutan Power System Operator
Thimphu: Bhutan



Message No.: Enter your message number
From: Shift In-charge, Control Room

Date: 7-Apr-18
Time: 10:00

Forecast Generation & Actual Generation of Dagachhu(06-Apr-2018).



Yours faithfully,
Tshering Yangzom