



འབྲུག་གྲོག་མེ་ལམ་འཛིན།

Bhutan Power Corporation Ltd.  
Bhutan Power System Operator  
Thimphu: Bhutan



Message No.: Enter your message number  
From: Shift In-charge, Control Room

Date: 6-Apr-18  
Time: 10:38

To  
Managing Director, BPC. Email: gemtshering@bpc.bt  
Director, O&MD, DGPC. Email: director.umd@drukgreen.com  
General Manager, TD, BPC. Email: ktobgye@bpc.bt  
General Manager, DCSD, BPC. Email: sandeeprai@bpc.bt

Sub: **Load Generation Balance Report of Yesterday (05-Apr-2018).**

Hours (BST)	Forecast		Actual		Hours (BST)	Forecast		Actual	
	Generation	Load	Generation	Load		Generation	Load	Generation	Load
0:00	280.40	246.50	285.84	251.98	12:00	280.40	260.10	284.95	278.45
0:15	278.70	243.70	285.45	249.72	12:15	280.40	259.40	284.68	279.64
0:30	278.90	243.90	287.53	250.34	12:30	280.40	262.90	285.05	276.89
0:45	279.10	244.10	286.63	246.44	12:45	280.40	261.30	286.48	262.02
1:00	280.40	247.70	287.47	248.07	13:00	280.40	262.00	285.29	261.42
1:15	280.40	246.60	287.34	254.45	13:15	280.40	258.70	285.45	267.36
1:30	279.70	244.70	287.57	256.08	13:30	280.40	258.90	285.32	267.83
1:45	280.10	245.10	287.61	258.28	13:45	280.40	256.00	285.07	252.70
2:00	280.40	245.80	287.52	256.31	14:00	280.40	256.00	284.93	255.38
2:15	280.40	245.60	287.98	256.32	14:15	280.40	257.60	286.37	259.08
2:30	279.00	244.00	287.08	258.41	14:30	280.40	253.60	286.41	260.90
2:45	280.00	245.00	287.15	261.52	14:45	280.40	258.40	285.80	266.45
3:00	280.00	245.00	287.62	248.95	15:00	280.40	251.60	293.70	281.69
3:15	280.40	245.40	287.02	229.21	15:15	280.40	256.50	263.63	222.07
3:30	280.40	246.70	287.30	245.39	15:30	280.40	258.80	263.64	251.79
3:45	280.40	246.10	287.23	242.25	15:45	280.40	256.10	285.98	253.78
4:00	280.40	248.30	288.22	243.53	16:00	280.40	260.80	309.52	258.46
4:15	280.40	248.30	288.45	248.02	16:15	280.40	263.20	301.91	272.13
4:30	280.40	249.20	286.88	251.33	16:30	280.40	264.00	303.85	277.20
4:45	280.40	249.00	286.80	255.48	16:45	280.40	266.50	305.18	281.55
5:00	280.40	247.70	286.95	257.04	17:00	296.40	268.90	316.63	286.05
5:15	280.40	250.00	285.12	255.21	17:15	296.40	272.20	316.95	285.13
5:30	280.40	255.20	284.52	269.21	17:30	296.40	275.20	317.16	287.88
5:45	296.40	262.40	284.81	268.61	17:45	296.40	281.80	316.60	295.13
6:00	296.40	268.50	286.40	289.96	18:00	296.40	284.50	316.49	295.04
6:15	296.40	278.70	285.80	297.41	18:15	296.40	288.50	304.27	305.88
6:30	296.40	279.70	302.88	307.48	18:30	296.40	296.60	303.86	313.41
6:45	296.40	280.50	302.62	317.31	18:45	296.40	303.50	303.88	326.32
7:00	296.40	277.30	302.91	307.66	19:00	296.40	307.80	302.01	334.57
7:15	296.40	277.00	302.81	303.04	19:15	296.40	306.00	303.19	335.28
7:30	296.40	273.40	302.29	301.91	19:30	296.40	300.80	302.18	338.66
7:45	296.40	270.50	302.67	299.16	19:45	296.40	297.90	301.39	339.11
8:00	296.40	264.70	302.05	292.07	20:00	296.40	295.60	300.35	328.89
8:15	296.10	261.10	301.88	288.82	20:15	296.40	294.10	300.62	323.05
8:30	296.40	262.30	301.93	292.27	20:30	296.40	291.00	299.96	310.62
8:45	295.00	260.00	302.12	295.28	20:45	296.40	285.70	299.95	305.70
9:00	292.60	257.60	303.05	299.09	21:00	282.00	278.70	300.24	305.46
9:15	294.90	259.90	301.80	291.98	21:15	280.40	277.20	283.11	297.52
9:30	295.20	260.20	302.14	294.13	21:30	280.40	275.60	283.27	302.42
9:45	296.40	262.60	284.64	276.53	21:45	280.40	272.20	283.69	290.37
10:00	296.40	264.00	286.02	259.40	22:00	280.40	267.10	283.71	294.24
10:15	280.40	259.90	286.66	267.51	22:15	280.40	264.30	282.91	289.15
10:30	280.40	255.60	285.36	266.13	22:30	280.40	261.40	283.42	281.14
10:45	280.40	254.10	286.61	269.77	22:45	280.40	257.40	283.30	272.78
11:00	280.40	256.30	292.69	271.79	23:00	280.40	252.40	284.58	273.52
11:15	280.40	259.20	281.19	267.98	23:15	280.40	250.90	283.59	271.72
11:30	280.40	260.00	286.50	275.53	23:30	280.40	249.60	283.49	270.82
11:45	280.40	259.80	287.84	283.63	23:45	280.40	248.40	283.62	266.48

Yours faithfully  
Kinley Wangmo

Coincidental peak load of Day(Last year):	
316.64 MW	5-Apr-17
Maximum Load till date:	
375.23 MW	24-Feb-18



འབྲུག་གྲོག་མེ་ལས་འཛིན།

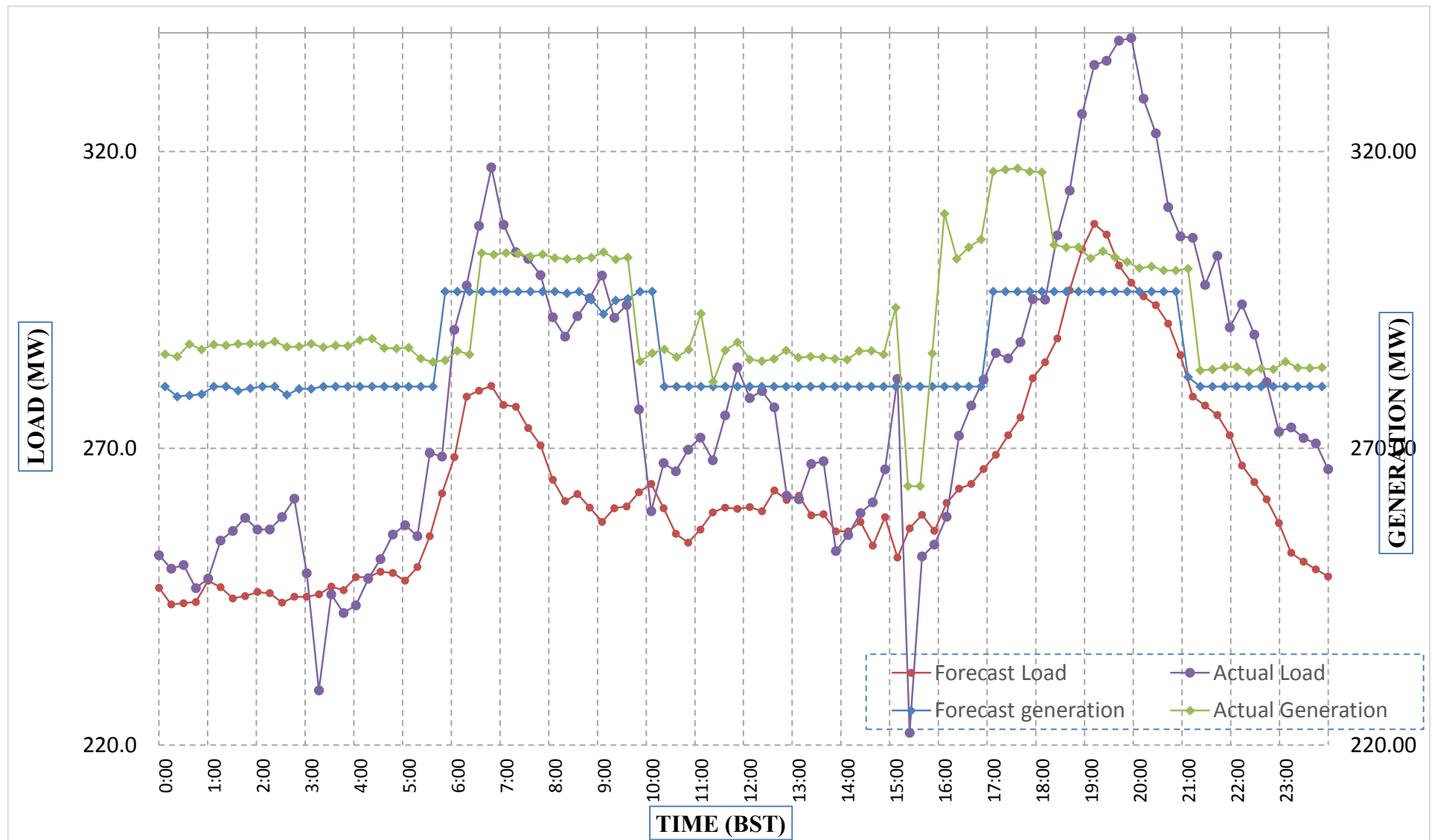
Bhutan Power Corporation Ltd.  
 Bhutan Power System Operator  
 Thimphu: Bhutan



Message No.: Enter your message number  
 From: Shift In-charge, Control Room

Date: 6-Apr-18  
 Time: 10:38

Forecast Generation & Load with Actual Generation & Load (05-Apr-2018).



Yours faithfully,  
 Kinley Wangmo

	MW	Coincidental peak load of Day(Last year):	
Peak Co-incident Generation(05-Apr-2018).	317.16	316.64 MW	5-Apr-17
Peak Co-incident Load(05-Apr-2018).	339.11	Maximum Load till date:	
		375.23 MW	24-Feb-18

Telephone: +975-02335631; Fax: +975-02335632; Email: bhutansystemoperator@bpc.bt; www.bpc.bt



ཕྱག་ལུགས་ལྷན་ཁུངས་ལྷན་ཁུངས་།

Bhutan Power Corporation Ltd.  
Bhutan Power System Operator  
Thimphu: Bhutan



Message No.: Enter your message number  
From: Shift In-charge, Control Room

Date: 6-Apr-18  
Time: 10:38

To  
Managing Director, BPC. Email: gemtshering@bpc.bt  
Director, O&MD, DGPC. Email: director.omb@drukgreen.com  
General Manager, TD, BPC. Email: thinleygyeltshen@bpc.bt  
General Manager, DCSD, BPC. Email: sandeeprai@bpc.bt

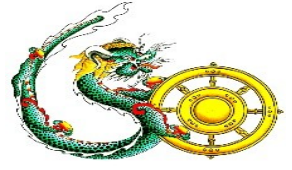
Sub: Load Generation Balance Report of Today (06-Apr-2018).

Hours (BST)	Forecast		Actual	
	Generation	Load	Generation	Load
0:00	277.10	247.10	284.06	262.05
0:15	275.90	245.90	283.16	257.16
0:30	274.50	244.40	283.58	264.94
0:45	277.80	247.80	284.01	264.63
1:00	277.90	247.90	282.82	268.46
1:15	276.70	246.70	283.24	261.19
1:30	274.50	243.70	282.99	262.04
1:45	274.50	244.30	283.10	266.56
2:00	275.20	245.20	282.60	257.38
2:15	275.20	245.20	282.81	263.34
2:30	274.70	244.70	283.22	263.49
2:45	277.30	247.30	283.73	254.83
3:00	274.50	242.50	284.30	246.61
3:15	277.10	247.10	282.95	249.97
3:30	278.50	248.50	282.55	246.64
3:45	278.20	248.20	283.09	251.54
4:00	280.10	250.10	283.75	248.93
4:15	279.90	249.90	283.07	258.01
4:30	281.70	251.70	283.13	263.58
4:45	281.10	251.10	283.43	263.06
5:00	280.30	250.30	285.30	264.97
5:15	284.50	254.50	282.83	262.30
5:30	289.30	259.30	299.89	277.32
5:45	299.70	269.70	298.87	289.88
6:00	306.20	276.20	298.91	308.25
6:15	307.10	286.40	300.27	313.68
6:30	307.10	290.40	299.16	317.88
6:45	307.10	289.20	299.12	313.67
7:00	307.10	284.60	299.17	319.55
7:15	307.10	286.30	299.09	298.27
7:30	307.10	280.80	298.83	294.54
7:45	307.10	278.00	299.19	293.75
8:00	301.80	271.80	300.05	289.73
8:15	298.10	268.10	299.33	287.63
8:30	299.20	269.20	295.32	274.04
8:45	296.30	266.30	294.18	270.77
9:00	291.10	265.20	292.88	262.48

Yours faithfully,  
Kinley Wangmo

Coincidental peak load of Day(Last year):	
318.32 MW	6-Apr-17

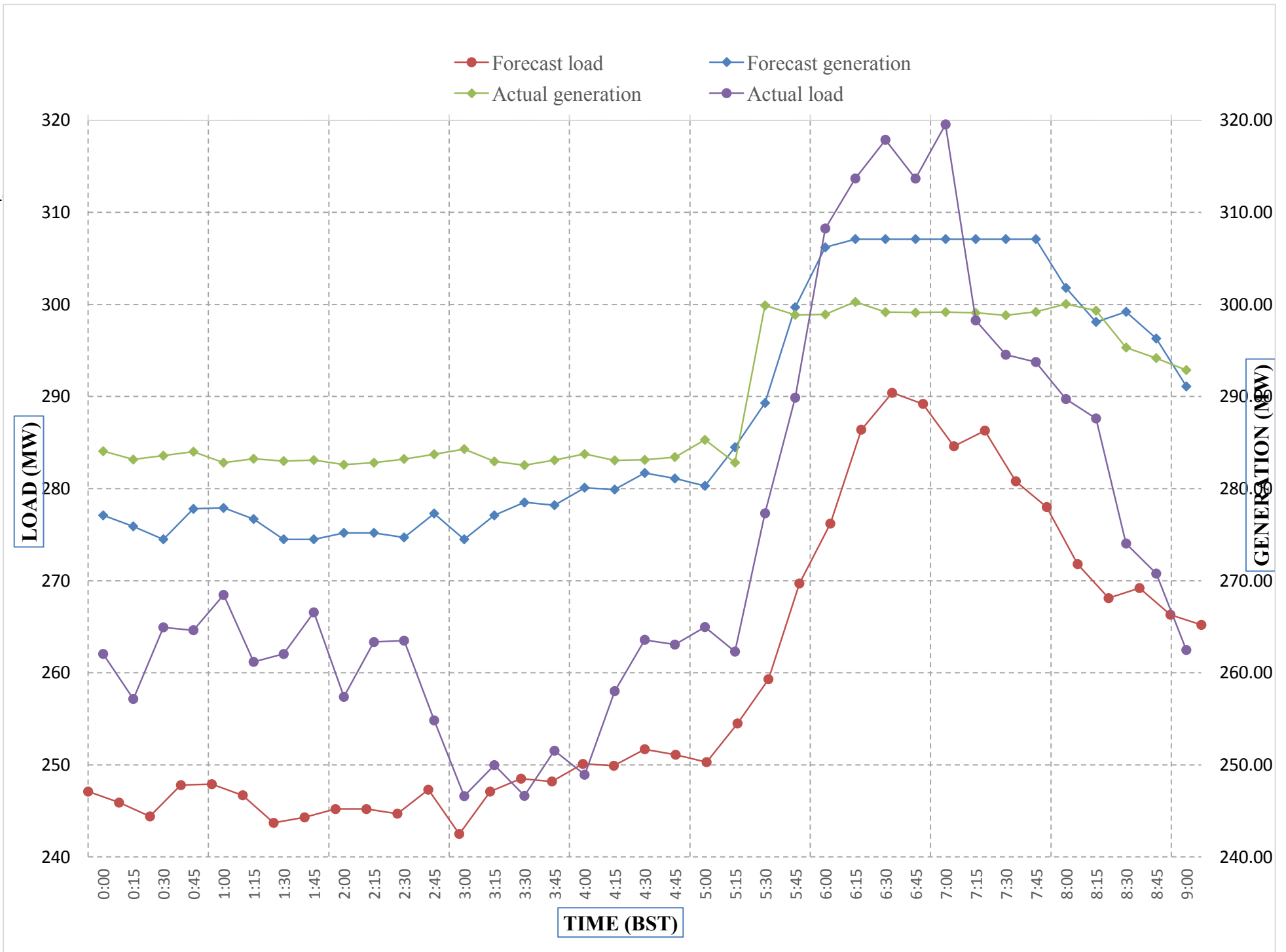
Maximum Load till date:	
375.23 MW	24-Feb-18



Message No.: Enter your message number  
 From: Shift In-charge, Control Room

4/5/2018 11:18 6-Apr-18  
 4/5/2018 11:18 10:38

Forecast Generation & Load with Actual Generation & Load of Today from 00:00hrs to 09:00hrs(06-Apr-2018).



Yours faithfully  
 Kinley Wangmo

<b>Coincidental peak load of Day(Last)</b>	
318.32 MW	6-Apr-17
<b>Maximum Load till date:</b>	
375.23 MW	24-Feb-18



འབྲུག་གྲོགས་ལེན་ལྷན་ཁག་།  
**Bhutan Power Corporation Ltd.**  
**Bhutan Power System Operator**  
**Thimphu: Bhutan**



**Message No.:** Enter your message number **Date:** 6-Apr-18  
**From:** Shift In-charge, Control Room **Time:** 10:38

**To**  
 Managing Director, BPC. Email: gemtshering@bpc.bt  
 Director, O&MD, DGPC. Email: director.umd@drukgreen.com  
 General Manager, TD, BPC. Email: ktobgye@bpc.bt  
 Advisor, BPC. Email: bharrattamang@bpc.bt

**Sub:** Load Generation Balance Report of Tomorrow (07-Apr-2018).

Hours (BST)	Forecast		Hours (BST)	Forecast	
	Generation	Load		Generation	Load
0:00	274.50	248.00	12:00	274.50	271.10
0:15	274.50	246.10	12:15	274.50	268.40
0:30	274.50	245.20	12:30	274.50	270.10
0:45	274.50	247.80	12:45	274.50	263.90
1:00	274.50	247.90	13:00	274.50	265.50
1:15	274.50	247.40	13:15	274.50	263.90
1:30	274.50	246.80	13:30	274.50	263.70
1:45	274.50	246.30	13:45	274.50	256.40
2:00	274.50	247.90	14:00	274.50	257.30
2:15	274.50	248.50	14:15	274.50	261.10
2:30	274.50	248.70	14:30	274.50	260.10
2:45	274.50	250.30	14:45	274.50	263.40
3:00	274.50	244.80	15:00	274.50	248.50
3:15	274.50	244.90	15:15	274.50	250.00
3:30	274.50	247.30	15:30	274.50	256.30
3:45	274.50	247.10	15:45	274.50	251.20
4:00	274.50	248.60	16:00	274.50	262.30
4:15	274.50	249.40	16:15	274.50	264.00
4:30	274.50	252.20	16:30	274.50	267.90
4:45	274.50	252.30	16:45	274.50	271.00
5:00	274.50	253.20	17:00	290.50	274.80
5:15	274.50	255.00	17:15	290.50	276.20
5:30	274.50	261.20	17:30	290.50	275.70
6:45	290.50	271.60	17:45	290.50	283.20
6:00	290.50	280.30	18:00	290.50	287.70
6:15	290.50	289.60	18:15	290.50	293.90
6:30	290.50	294.80	18:30	290.50	303.40
6:45	290.50	295.50	18:45	290.50	309.60
7:00	290.50	289.00	19:00	290.50	312.70
7:15	290.50	291.40	19:15	290.50	312.90
7:30	290.50	285.80	19:30	290.50	311.00
7:45	290.50	281.80	19:45	290.50	308.90
8:00	290.50	275.70	20:00	290.50	305.00
8:15	290.50	272.20	20:15	290.50	300.50
8:30	290.50	274.30	20:30	290.50	294.70
8:45	290.50	272.00	20:45	290.50	292.00
9:00	290.50	273.00	21:00	274.50	286.80
9:15	290.50	274.80	21:15	274.50	282.80
9:30	290.50	269.20	21:30	274.50	282.70
9:45	290.50	267.60	21:45	274.50	278.30
10:00	275.70	266.90	22:00	274.50	274.70
10:15	274.50	267.00	22:15	274.50	271.10
10:30	274.50	264.40	22:30	274.50	267.20
10:45	274.50	264.90	22:45	274.50	259.90
11:00	274.50	264.10	23:00	274.50	256.10
11:15	274.50	268.20	23:15	274.50	257.90
11:30	274.50	269.70	23:30	274.50	253.30
11:45	274.50	272.40	23:45	274.50	254.50

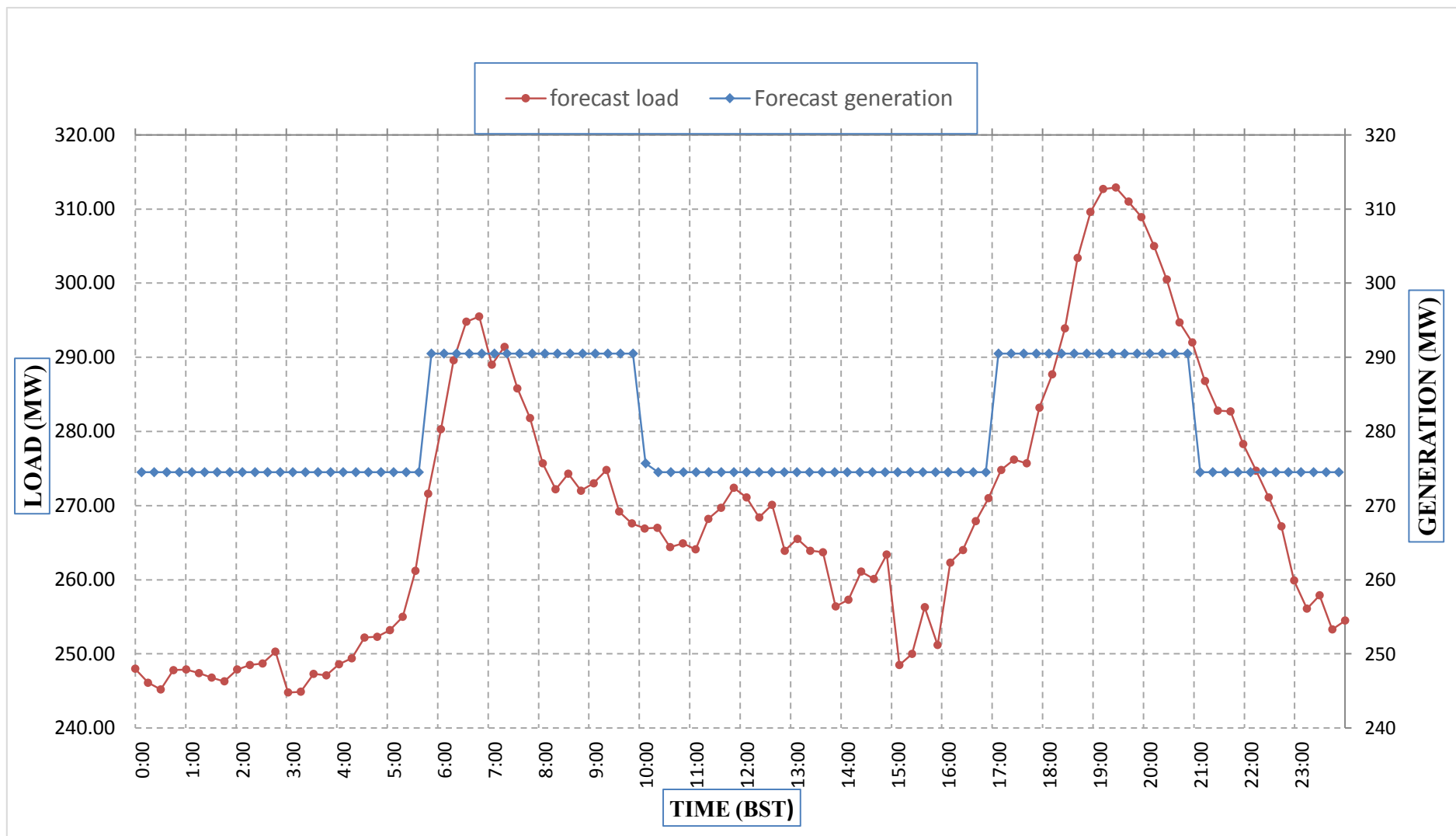
Yours faithfully,  
 Kinley Wangmo



Message No.: Enter your message number  
 From: Shift In-charge, Control Room

Date: 6-Apr-18  
 Time: 10:38

Forecast Generation & Load Forecast for Tomorrow (07-Apr-2018).



Yours faithfully,  
 Kinley Wangmo

	MW
Scheduled Peak Generation(07-Apr-2018).	290.50
Forecast Peak Load(07-Apr-2018).	312.90



འབྲུག་གི་འཕུལ་གྲོགས་ལེ་སྐོར་ལྷན་ཁག་།

Bhutan Power Corporation Ltd.  
Bhutan Power System Operator  
Thimphu: Bhutan



Message No.:

Enter your message number

Date: 6-Apr-18

From:

Shift In-charge, Control Room

Time: 10:38

To

Managing Director, BPC. Email: gemtshering@bpc.bt  
Director, O&MD, DGPC. Email: director.umd@drukgreen.com  
General Manager, TD, BPC. Email: ktobgye@bpc.bt  
Advisor, BPC. Email: bharattamang@bpc.bt

Sub:

**Forecast Generation and Actual Generation of Dagachhu (05-Apr-2018).**

Hours (BST)	Actual Frequency	Forecast Generation	Actual Generation	Hours (BST)	Actual Frequency	Forecast Generation	Actual Generation
0:00	49.87	17.00	15.21	12:00	49.95	17.00	17.10
0:15	49.97	17.00	15.22	12:15	50.01	17.00	17.11
0:30	49.98	17.00	16.21	12:30	49.99	17.00	17.07
0:45	50.01	17.00	16.24	12:45	50.02	17.00	17.03
1:00	50.01	17.00	16.19	13:00	49.98	17.00	17.01
1:15	49.99	17.00	16.19	13:15	49.92	17.00	16.99
1:30	49.94	17.00	16.70	13:30	49.94	17.00	16.98
1:45	49.92	17.00	16.67	13:45	50.02	17.00	17.00
2:00	49.90	17.00	16.68	14:00	50.04	17.00	16.96
2:15	49.89	17.00	16.70	14:15	0.00	17.00	16.99
2:30	49.98	17.00	16.69	14:30	0.00	17.00	17.01
2:45	50.00	17.00	16.18	14:45	50.02	17.00	16.99
3:00	49.99	17.00	16.19	15:00	49.94	17.00	17.00
3:15	50.02	17.00	16.21	15:15	49.89	17.00	0.00
3:30	50.02	17.00	16.18	15:30	49.95	17.00	0.00
3:45	50.03	17.00	16.21	15:45	49.97	17.00	17.04
4:00	50.00	17.00	16.19	16:00	49.99	17.00	17.21
4:15	50.01	17.00	16.18	16:15	49.95	17.00	17.19
4:30	49.99	17.00	16.17	16:30	49.98	17.00	17.20
4:45	49.99	17.00	16.17	16:45	50.00	17.00	17.19
5:00	49.98	17.00	16.20	17:00	50.02	17.00	17.21
5:15	49.95	17.00	16.18	17:15	50.01	17.00	17.19
5:30	49.90	17.00	16.20	17:30	49.98	17.00	17.22
6:45	49.93	17.00	16.18	17:45	50.02	17.00	17.19
6:00	49.93	17.00	17.20	18:00	50.01	17.00	17.20
6:15	50.00	17.00	17.48	18:15	49.97	17.00	17.20
6:30	50.01	17.00	18.23	18:30	49.94	17.00	17.19
6:45	50.04	17.00	18.25	18:45	49.88	17.00	17.20
7:00	50.01	17.00	18.22	19:00	49.98	17.00	17.20
7:15	49.99	17.00	17.97	19:15	49.97	17.00	17.18
7:30	50.02	17.00	17.97	19:30	49.93	17.00	17.20
7:45	50.04	17.00	17.97	19:45	50.03	17.00	16.56
8:00	50.03	17.00	18.00	20:00	49.98	17.00	16.55
8:15	49.97	17.00	17.98	20:15	49.95	17.00	16.54
8:30	50.02	17.00	17.95	20:30	50.03	17.00	16.55
8:45	50.01	17.00	18.00	20:45	49.99	17.00	16.53
9:00	49.99	17.00	18.02	21:00	49.98	17.00	16.56
9:15	49.95	17.00	17.99	21:15	49.98	17.00	16.55
9:30	49.98	17.00	17.96	21:30	49.96	17.00	16.56
9:45	49.97	17.00	17.99	21:45	50.01	17.00	16.56
10:00	49.97	17.00	17.98	22:00	49.84	17.00	16.54
10:15	49.97	17.00	18.20	22:15	49.91	17.00	16.56
10:30	50.02	17.00	17.76	22:30	49.98	17.00	16.56
10:45	49.97	17.00	18.27	22:45	49.94	17.00	16.55
11:00	49.98	17.00	24.63	23:00	49.96	17.00	17.03
11:15	49.92	17.00	13.10	23:15	49.88	17.00	17.01
11:30	49.93	17.00	17.21	23:30	49.93	17.00	16.83
11:45	49.97	17.00	20.27	23:45	49.94	17.00	16.83

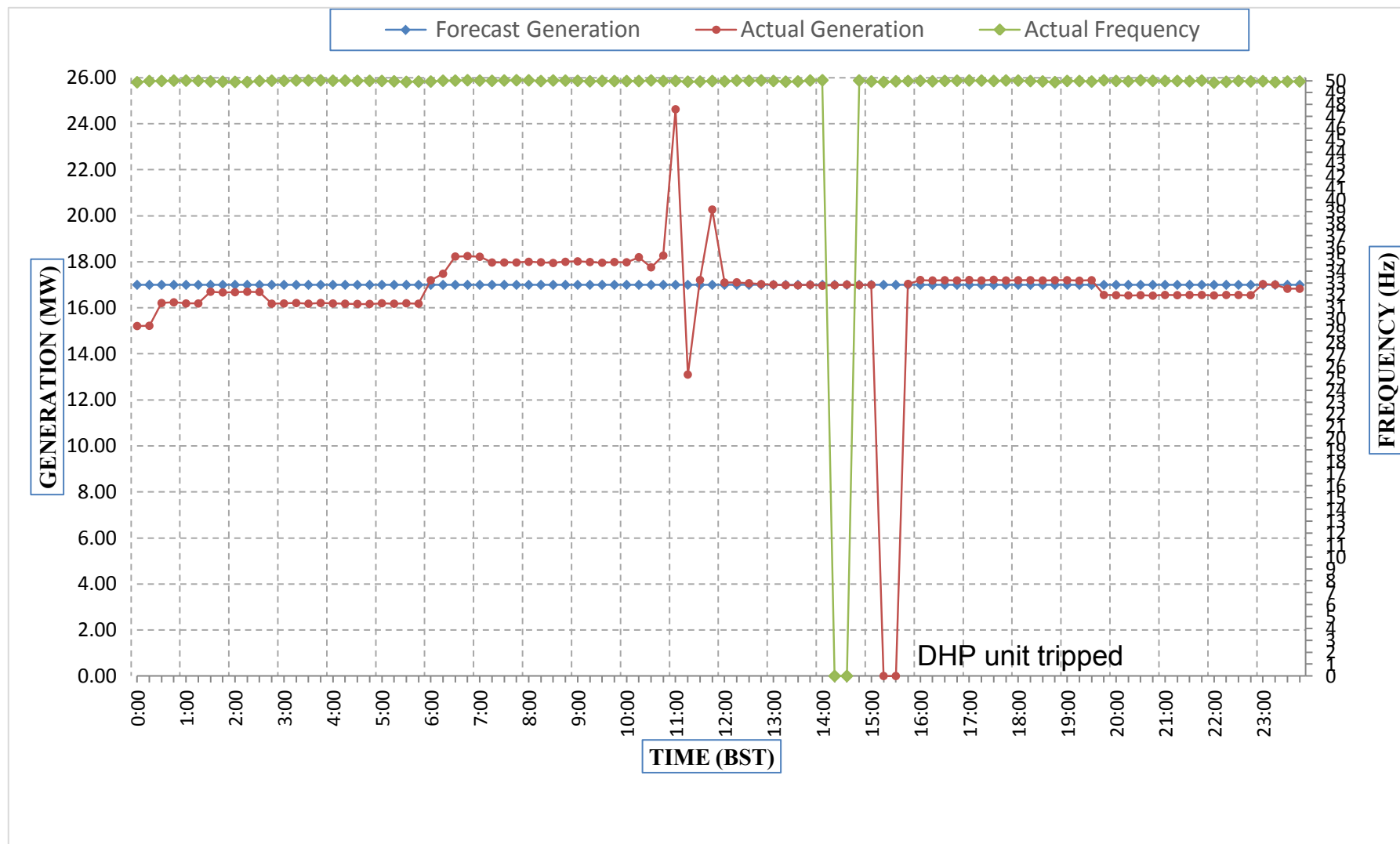
Yours faithfully,  
Kinley Wangmo



Message No.: Enter your message number  
 From: Shift In-charge, Control Room

Date: 6-Apr-18  
 Time: 10:38

Forecast Generation & Actual Generation of Dagachhu(05-Apr-2018).



Yours faithfully,  
 Kinley Wangmo