



ཕྱག་ལུགས་ལེ་ལས་འཛིན།

Bhutan Power Corporation Ltd.
Bhutan Power System Operator
Thimphu: Bhutan



Message No.: Enter your message number
From: Shift In-charge, Control Room

Date: 27-Feb-18
Time: 10:50

To
Managing Director, BPC. Email: gemtshering@bpc.bt
Director, O&MD, DGPC. Email: director.omb@drukgreen.com
General Manager, TD, BPC. Email: ktobgye@bpc.bt
General Manager, DCSD, BPC. Email: sandeeprai@bpc.bt

Sub: **Load Generation Balance Report of Yesterday (26-Feb-2018).**

Hours (BST)	Forecast		Actual		Hours (BST)	Forecast		Actual	
	Generation	Load	Generation	Load		Generation	Load	Generation	Load
0:00	266.40	276.70	282.78	268.02	12:00	266.40	292.80	273.91	312.87
0:15	266.40	273.30	284.86	269.06	12:15	266.40	293.50	272.40	314.41
0:30	266.40	273.80	283.66	269.92	12:30	266.40	295.90	272.22	311.60
0:45	266.40	269.90	282.60	266.24	12:45	266.40	294.30	273.61	312.71
1:00	266.40	272.10	284.62	264.49	13:00	266.40	291.60	273.77	311.15
1:15	266.40	274.30	283.07	264.03	13:15	266.40	293.70	282.14	304.86
1:30	266.40	274.80	284.79	261.73	13:30	266.40	290.90	283.75	301.66
1:45	266.40	274.50	282.92	264.63	13:45	266.40	291.40	282.20	296.32
2:00	266.40	272.90	283.92	265.86	14:00	266.40	287.50	281.98	293.34
2:15	266.40	271.10	282.46	263.10	14:15	266.40	288.10	293.09	296.45
2:30	264.60	265.50	282.05	262.27	14:30	266.40	287.50	292.34	295.23
2:45	266.00	266.20	281.70	262.09	14:45	266.40	286.40	292.41	295.91
3:00	266.40	266.40	280.37	267.75	15:00	266.40	289.70	292.07	297.23
3:15	266.40	266.40	280.98	261.59	15:15	266.40	291.40	292.69	293.60
3:30	266.40	269.50	281.80	265.19	15:30	266.40	289.60	293.13	299.16
3:45	266.40	269.10	281.00	267.48	15:45	266.40	292.80	292.82	295.02
4:00	266.40	269.00	281.38	268.77	16:00	266.40	295.00	293.27	297.98
4:15	266.40	268.30	280.21	259.88	16:15	266.40	302.60	292.30	300.72
4:30	266.40	271.20	282.51	264.07	16:30	266.40	303.90	292.70	303.48
4:45	266.40	271.60	282.55	269.13	16:45	266.40	303.50	293.49	298.49
5:00	266.40	280.60	280.13	272.50	17:00	266.40	306.80	292.70	298.54
5:15	266.40	282.60	280.52	280.52	17:15	277.40	309.50	292.68	301.27
5:30	266.40	282.90	282.23	284.13	17:30	277.40	313.00	292.24	305.30
5:45	266.40	283.20	280.12	285.39	17:45	277.40	315.20	292.36	309.68
6:00	266.40	286.10	281.51	290.88	18:00	277.40	323.00	293.43	318.70
6:15	277.40	281.30	292.82	310.45	18:15	277.40	329.60	293.78	333.91
6:30	277.40	283.80	290.88	321.59	18:30	277.40	335.10	294.11	342.23
6:45	277.40	281.80	291.81	338.96	18:45	277.40	340.50	293.50	358.73
7:00	275.00	276.20	292.73	341.35	19:00	277.40	339.60	293.69	356.48
7:15	277.40	278.30	291.41	341.59	19:15	277.40	338.90	294.77	358.36
7:30	277.40	291.40	292.80	282.11	19:30	277.40	337.00	293.61	345.73
7:45	277.40	304.70	292.64	304.15	19:45	277.40	331.80	294.66	347.55
8:00	277.40	316.50	291.18	317.01	20:00	277.40	327.60	293.98	341.35
8:15	277.40	316.00	291.64	358.92	20:15	277.40	326.90	293.95	337.88
8:30	277.40	310.30	221.05	316.02	20:30	277.40	324.90	293.80	330.87
8:45	277.40	308.30	270.82	314.76	20:45	277.40	321.30	294.14	330.19
9:00	277.40	304.70	271.16	316.80	21:00	277.40	317.20	294.76	325.88
9:15	266.40	305.30	260.70	319.98	21:15	266.40	313.10	293.28	314.04
9:30	266.40	305.10	260.45	319.66	21:30	266.40	310.50	293.04	318.48
9:45	266.40	301.10	260.43	314.71	21:45	266.40	305.20	293.45	310.41
10:00	266.40	302.40	260.66	306.77	22:00	266.40	301.30	293.38	308.22
10:15	266.40	298.00	260.66	304.95	22:15	266.40	294.70	282.85	298.97
10:30	266.40	293.10	260.48	310.63	22:30	266.40	293.70	282.46	292.81
10:45	266.40	291.50	260.51	307.06	22:45	266.40	290.80	284.09	275.73
11:00	266.40	291.30	260.62	305.16	23:00	266.40	286.50	282.58	270.32
11:15	266.40	293.70	261.33	313.96	23:15	266.40	282.60	285.20	263.48
11:30	266.40	291.50	272.56	312.60	23:30	266.40	281.20	282.77	263.69
11:45	266.40	293.20	309.99	317.03	23:45	266.40	279.70	283.10	265.98

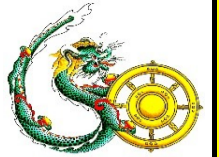
Yours faithfully
Phub Zam

Coincidental peak load of Day(Last year):	
321.34	26-Feb-17
Maximum Load till date:	
375.23 MW	24-Feb-18



འབྲུག་གྲོག་མེ་ལས་འཛིན།

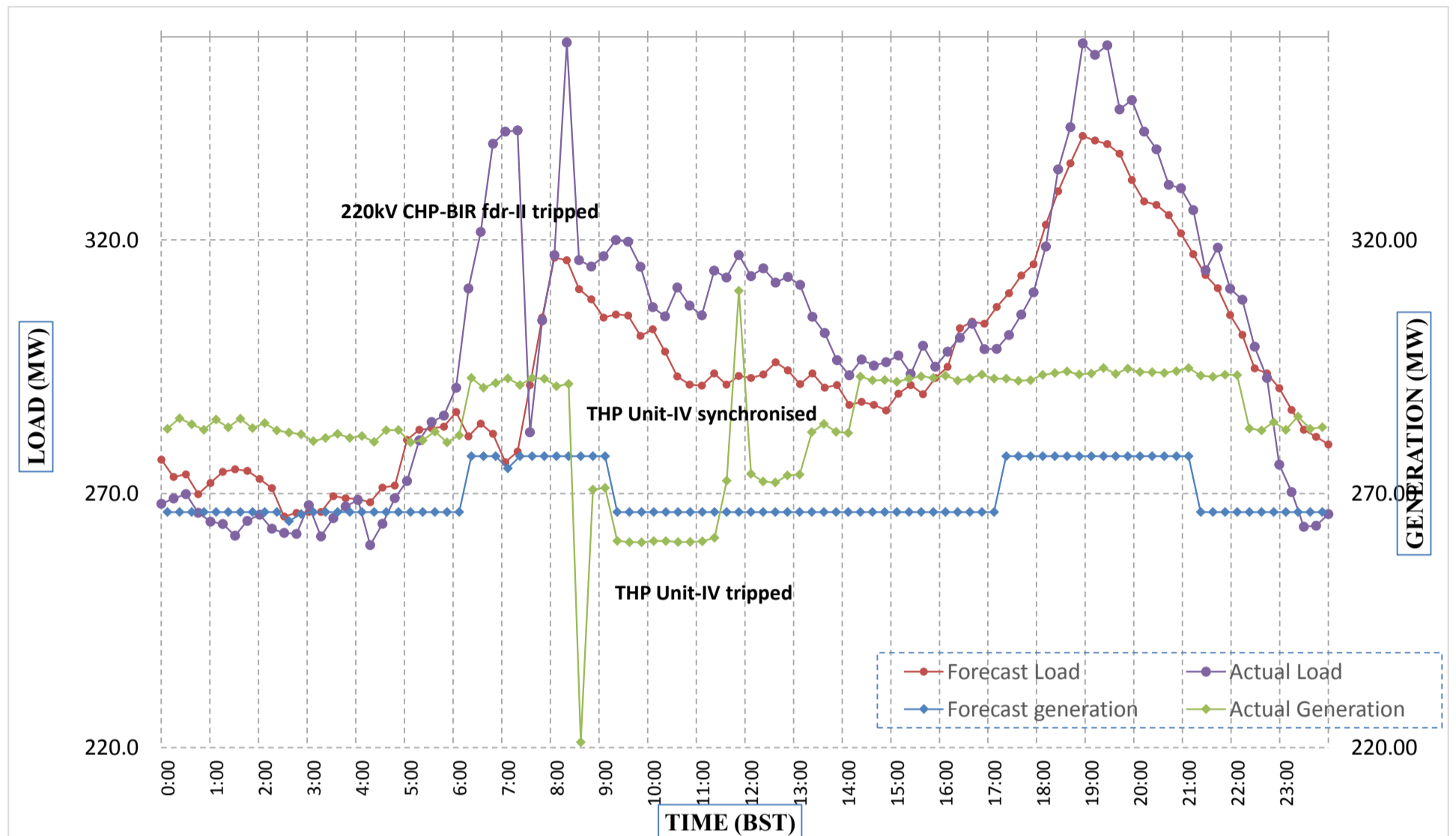
Bhutan Power Corporation Ltd.
 Bhutan Power System Operator
 Thimphu: Bhutan



Message No.: Enter your message number
 From: Shift In-charge, Control Room

Date: 27-Feb-18
 Time: 10:50

Forecast Generation & Load with Actual Generation & Load (26-Feb-2018).



Yours faithfully,
 Phub Zam

	MW	Coincidental peak load of Day(Last year):	
Peak Co-incident Generation(26-Feb-2018).	309.99	321.34	26-Feb-17
Peak Co-incident Load(26-Feb-2018).	358.92		
		Maximum Load till date:	
		375.23 MW	24-Feb-18

Telephone: +975-02335631; Fax: +975-02335632; Email: bhutansystemoperator@bpc.bt; www.bpc.bt



ཕྱག་ལུགས་ལྷན་ཁུངས་ལྷན་ཁུངས་།

Bhutan Power Corporation Ltd.
Bhutan Power System Operator
Thimphu: Bhutan



Message No.: Enter your message number
From: Shift In-charge, Control Room

Date: 27-Feb-18
Time: 10:50

To
Managing Director, BPC. Email: gemtshering@bpc.bt
Director, O&MD, DGPC. Email: director.umd@drukgreen.com
General Manager, TD, BPC. Email: thinleygyeltshen@bpc.bt
General Manager, DCSD, BPC. Email: sandeeprai@bpc.bt

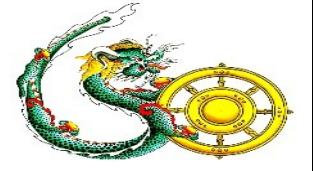
Sub: Load Generation Balance Report of Today (27-Feb-2018).

Hours (BST)	Forecast		Actual	
	Generation	Load	Generation	Load
0:00	262.20	277.60	282.99	253.06
0:15	262.20	274.10	282.91	255.13
0:30	262.20	274.90	284.27	251.24
0:45	262.20	271.70	284.51	243.71
1:00	262.20	272.90	283.72	253.43
1:15	262.20	274.10	284.41	251.15
1:30	262.20	274.60	282.79	252.75
1:45	262.20	273.90	283.14	251.21
2:00	262.20	272.50	284.09	246.45
2:15	262.20	269.80	283.05	247.38
2:30	262.20	266.40	283.10	253.84
2:45	262.20	267.50	284.43	250.87
3:00	262.20	267.30	284.04	243.89
3:15	262.20	267.20	282.98	245.46
3:30	262.20	268.00	282.85	242.85
3:45	262.20	267.20	284.42	244.04
4:00	262.20	269.90	283.41	247.95
4:15	262.20	269.00	284.29	247.59
4:30	262.20	271.00	283.47	248.27
4:45	262.20	271.50	284.69	248.61
5:00	262.20	277.90	283.78	251.00
5:15	262.20	280.50	284.27	250.51
5:30	262.20	282.00	284.68	259.05
5:45	262.20	282.50	283.21	267.38
6:00	262.20	285.50	284.70	273.17
6:15	273.20	287.10	292.75	281.52
6:30	273.20	290.90	304.35	303.52
6:45	273.20	292.20	304.26	317.84
7:00	273.20	296.40	303.52	321.41
7:15	273.20	299.90	304.56	322.68
7:30	273.20	307.80	303.09	319.39
7:45	273.20	314.50	302.45	308.98
8:00	273.20	316.00	300.88	306.45
8:15	273.20	315.50	301.98	307.91
8:30	273.20	311.90	300.91	300.13
8:45	273.20	310.30	302.05	289.55
9:00	273.20	308.30	301.86	289.17

1022542

Yours faithfully,
Phub Zam

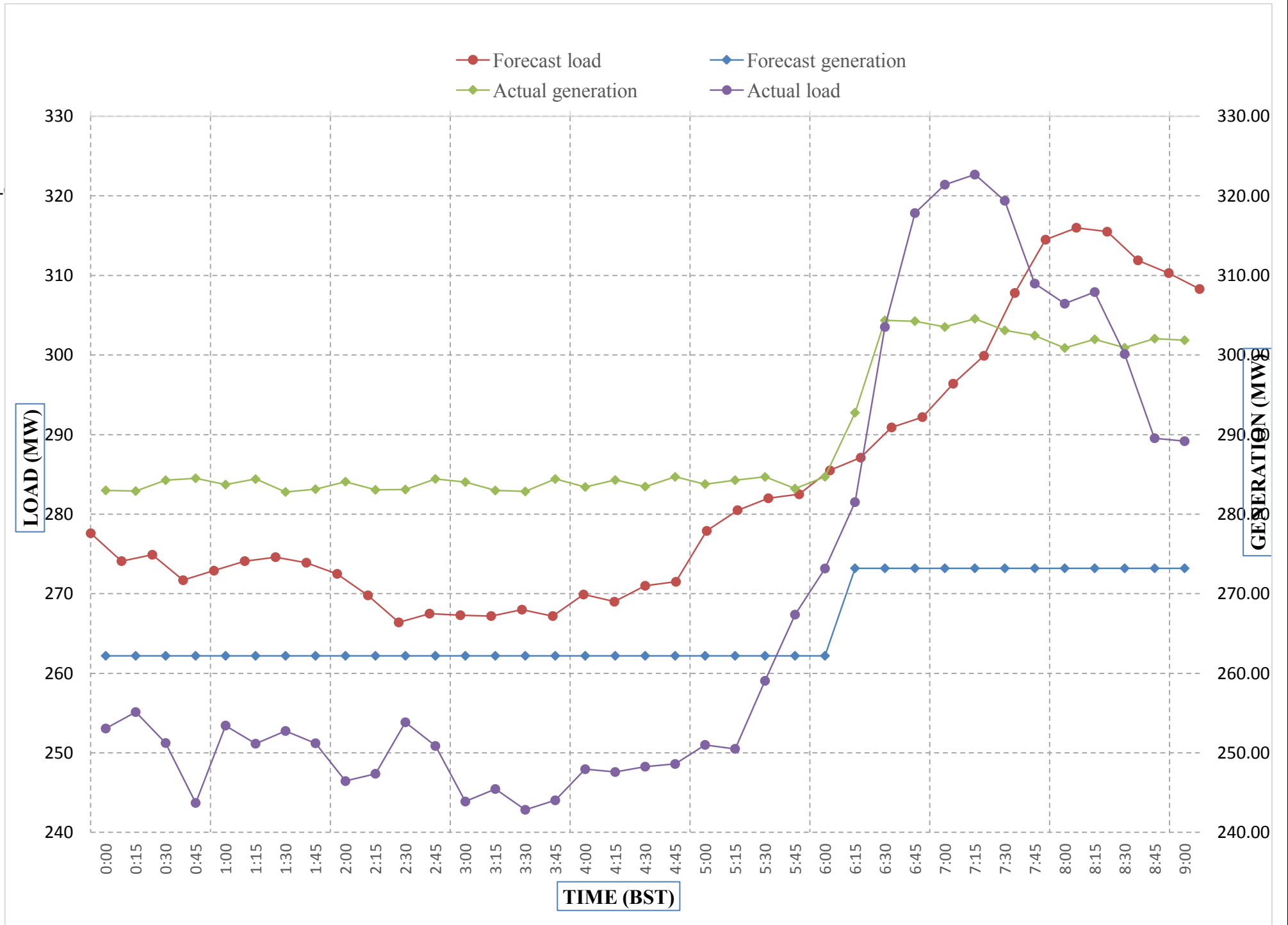
Coincidental peak load of Day(Last year):	
300.91	27-Feb-17
321.34	
375.23 MW	24-Feb-18



Message No.: Enter your message number
From: Shift In-charge, Control Room

2/27/2018 10:50 27-Feb-18
2/27/2018 10:50 10:50

Forecast Generation & Load with Actual Generation & Load of Today from 00:00hrs to 09:00hrs(27-Feb-2018).



Yours faithfully
 Phub Zam

Coincidental peak load of Day(Last)	
300.91	27-Feb-17

Maximum Load till date:	
375.23 MW	24-Feb-18



འབྲུག་གོ་མི་ལམ་འཛིན།
Bhutan Power Corporation Ltd.
Bhutan Power System Operator
 Thimphu: Bhutan



Message No.: Enter your message number **Date:** 27-Feb-18
From: Shift In-charge, Control Room **Time:** 10:50

To
 Managing Director, BPC. Email: gemtshering@bpc.bt
 Director, O&MD, DGPC. Email: director.umd@drukgreen.com
 General Manager, TD, BPC. Email: ktobgye@bpc.bt
 Advisor, BPC. Email: bharrattamang@bpc.bt

Sub: Load Generation Balance Report of Tomorrow (28-Feb-2018).

Hours (BST)	Forecast		Hours (BST)	Forecast	
	Generation	Load		Generation	Load
0:00	254.20	274.20	12:00	278.70	298.70
0:15	253.00	273.00	12:15	280.10	300.10
0:30	253.50	273.50	12:30	281.30	301.30
0:45	249.00	269.00	12:45	279.20	299.20
1:00	250.40	270.40	13:00	277.40	297.40
1:15	251.40	271.40	13:15	276.60	296.60
1:30	252.10	272.10	13:30	273.60	293.60
1:45	251.60	271.60	13:45	274.80	294.80
2:00	251.10	271.10	14:00	269.10	289.10
2:15	247.30	267.30	14:15	273.10	293.10
2:30	245.60	265.60	14:30	273.20	293.20
2:45	244.50	264.50	14:45	271.70	291.70
3:00	245.80	265.80	15:00	274.00	294.00
3:15	246.20	266.20	15:15	273.50	293.50
3:30	246.90	266.90	15:30	275.30	295.30
3:45	247.40	267.40	15:45	277.30	297.30
4:00	249.60	269.60	16:00	276.70	296.70
4:15	248.20	268.20	16:15	282.80	302.80
4:30	250.10	270.10	16:30	283.00	303.00
4:45	251.30	271.30	16:45	283.40	303.40
5:00	256.60	276.60	17:00	285.90	305.90
5:15	260.40	280.40	17:15	289.20	309.20
5:30	263.50	283.50	17:30	293.30	313.30
6:45	264.60	284.60	17:45	294.10	314.10
6:00	272.30	292.30	18:00	303.30	323.30
6:15	272.80	292.80	18:15	312.80	332.80
6:30	279.90	299.90	18:30	319.70	339.70
6:45	284.40	304.40	18:45	328.10	348.10
7:00	288.60	308.60	19:00	327.80	347.80
7:15	296.90	316.90	19:15	326.20	346.20
7:30	282.40	302.40	19:30	324.40	344.40
7:45	294.70	314.70	19:45	317.90	337.90
8:00	296.90	316.90	20:00	313.40	333.40
8:15	306.30	326.30	20:15	310.20	330.20
8:30	293.90	313.90	20:30	307.60	327.60
8:45	292.20	312.20	20:45	304.20	324.20
9:00	290.40	310.40	21:00	299.20	319.20
9:15	291.10	311.10	21:15	295.30	315.30
9:30	289.80	309.80	21:30	292.20	312.20
9:45	285.90	305.90	21:45	285.70	305.70
10:00	284.60	304.60	22:00	283.00	303.00
10:15	282.20	302.20	22:15	275.80	295.80
10:30	278.70	298.70	22:30	272.60	292.60
10:45	277.50	297.50	22:45	263.70	283.70
11:00	276.80	296.80	23:00	258.90	278.90
11:15	280.30	300.30	23:15	257.80	277.80
11:30	279.00	299.00	23:30	255.90	275.90
11:45	280.70	300.70	23:45	251.70	271.70

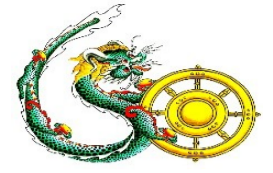
##

Yours faithfully,
 Phub Zam



འབྲུག་གྲོག་མེ་ལས་འཛིན།

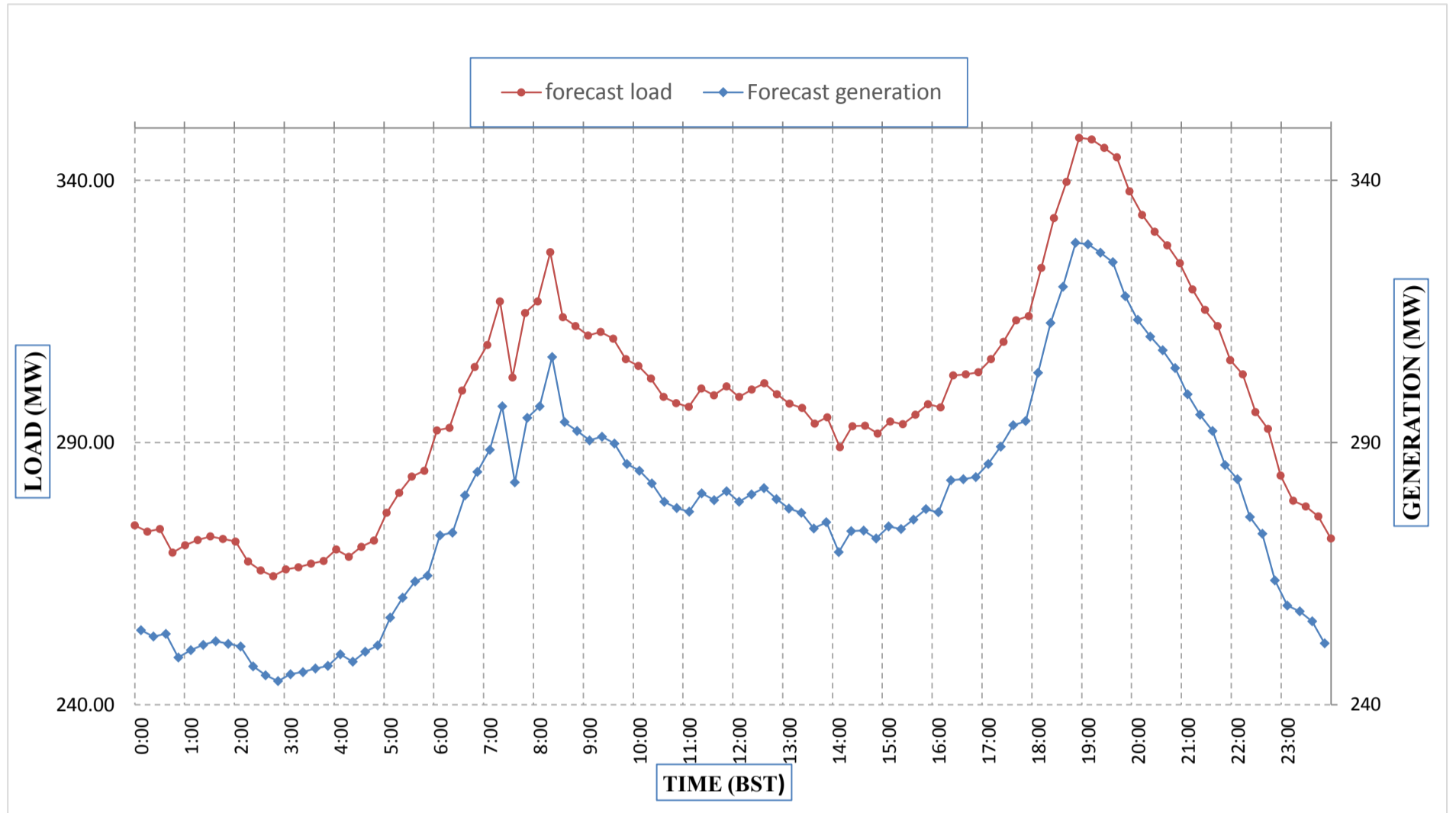
Bhutan Power Corporation Ltd.
Bhutan Power System Operator
Thimphu: Bhutan



Message No.: Enter your message number
From: Shift In-charge, Control Room

Date: 27-Feb-18
Time: 10:50

Forecast Generation & Load Forecast for Tomorrow (28-Feb-2018).



Yours faithfully,
Phub Zam

	MW
Scheduled Peak Generation(28-Feb-2018).	328.10
Forecast Peak Load(28-Feb-2018).	348.10



འབྲུག་གི་འཕུལ་གྲོགས་ལེ་སྐོར་ལྷན་ཁག་།

Bhutan Power Corporation Ltd.
Bhutan Power System Operator
Thimphu: Bhutan



Message No.:

Enter your message number

Date: 27-Feb-18

From:

Shift In-charge, Control Room

Time: 10:50

To

Managing Director, BPC. Email: gemtshering@bpc.bt
Director, O&MD, DGPC. Email: director.umd@drukgreen.com
General Manager, TD, BPC. Email: ktobgye@bpc.bt
Advisor, BPC. Email: bharattamang@bpc.bt

Sub:

Forecast Generation and Actual Generation of Dagachhu (26-Feb-2018).

Hours (BST)	Actual Frequency	Forecast Generation	Actual Generation	Hours (BST)	Actual Frequency	Forecast Generation	Actual Generation
0:00	49.98	17.50	17.67	12:00	49.95	17.50	17.67
0:15	50.01	17.50	17.67	12:15	49.94	17.50	17.67
0:30	50.04	17.50	17.68	12:30	49.97	17.50	17.67
0:45	50.00	17.50	17.68	12:45	49.94	17.50	17.67
1:00	50.00	17.50	17.68	13:00	50.00	17.50	17.67
1:15	50.01	17.50	17.67	13:15	50.04	17.50	17.70
1:30	49.99	17.50	17.66	13:30	49.99	17.50	17.65
1:45	49.99	17.50	17.67	13:45	49.99	17.50	17.66
2:00	50.01	17.50	17.68	14:00	50.00	17.50	17.70
2:15	50.00	17.50	17.68	14:15	50.00	17.50	17.67
2:30	50.00	17.50	17.68	14:30	49.94	17.50	17.72
2:45	49.99	17.50	17.69	14:45	49.96	17.50	17.65
3:00	50.02	17.50	17.67	15:00	49.98	17.50	17.68
3:15	49.99	17.50	17.68	15:15	49.98	17.50	17.68
3:30	50.00	17.50	17.68	15:30	49.98	17.50	17.68
3:45	49.99	17.50	17.67	15:45	49.95	17.50	17.69
4:00	50.02	17.50	17.67	16:00	49.96	17.50	17.73
4:15	50.02	17.50	17.67	16:15	49.99	17.50	17.70
4:30	50.03	17.50	17.66	16:30	49.94	17.50	17.68
4:45	49.99	17.50	17.69	16:45	49.95	17.50	17.69
5:00	50.07	17.50	17.70	17:00	49.97	17.50	17.69
5:15	50.02	17.50	17.67	17:15	50.03	17.50	17.72
5:30	50.01	17.50	17.67	17:30	50.02	17.50	17.68
6:45	50.01	17.50	17.67	17:45	50.02	17.50	17.70
6:00	50.04	17.50	17.67	18:00	50.04	17.50	17.69
6:15	50.03	17.50	17.71	18:15	50.02	17.50	17.69
6:30	50.00	17.50	17.63	18:30	49.99	17.50	17.68
6:45	49.98	17.50	17.70	18:45	49.92	17.50	17.70
7:00	49.95	17.50	17.66	19:00	49.96	17.50	17.68
7:15	50.02	17.50	17.70	19:15	50.01	17.50	17.72
7:30	50.04	17.50	17.69	19:30	49.97	17.50	17.71
7:45	50.03	17.50	17.68	19:45	49.99	17.50	17.68
8:00	50.04	17.50	17.68	20:00	49.97	17.50	17.69
8:15	49.99	17.50	17.69	20:15	49.99	17.50	17.69
8:30	49.98	17.50	17.68	20:30	49.95	17.50	17.69
8:45	50.00	17.50	17.71	20:45	49.97	17.50	17.68
9:00	50.03	17.50	17.70	21:00	49.97	17.50	17.68
9:15	49.97	17.50	17.68	21:15	49.94	17.50	17.67
9:30	49.96	17.50	17.67	21:30	49.94	17.50	17.67
9:45	49.94	17.50	17.69	21:45	49.98	17.50	17.68
10:00	49.99	17.50	17.70	22:00	50.01	17.50	17.68
10:15	49.93	17.50	17.66	22:15	49.90	17.50	17.68
10:30	49.97	17.50	17.66	22:30	49.98	17.50	17.68
10:45	49.98	17.50	17.68	22:45	49.98	17.50	17.68
11:00	50.00	17.50	17.68	23:00	50.02	17.50	17.69
11:15	50.03	17.50	17.69	23:15	49.96	17.50	17.70
11:30	49.95	17.50	17.68	23:30	49.98	17.50	17.69
11:45	49.92	17.50	17.67	23:45	49.98	17.50	17.68

Yours faithfully,
Phub Zam

#



འབྲུག་གྲོག་མེ་ལས་འཛིན།

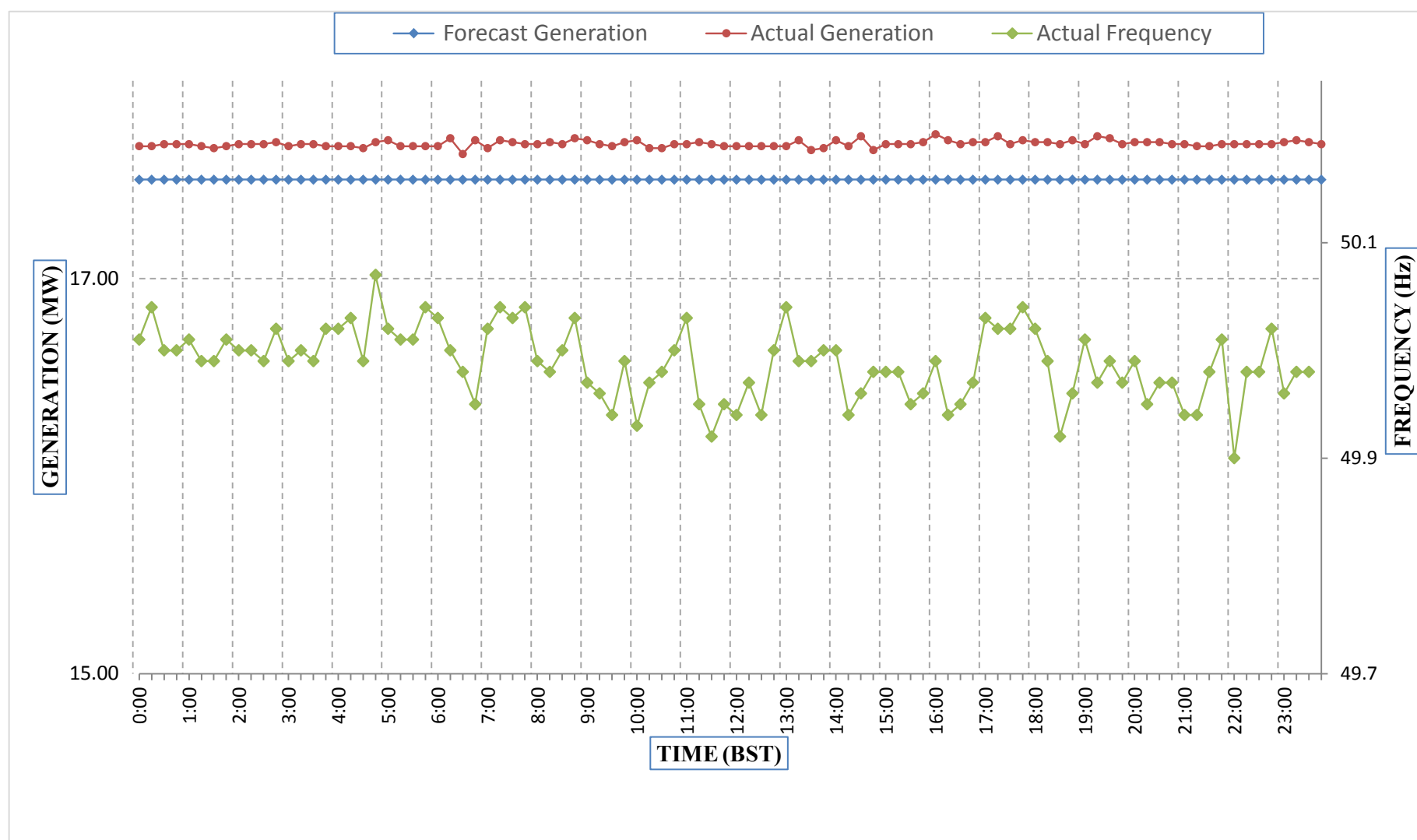
Bhutan Power Corporation Ltd.
Bhutan Power System Operator
Thimphu: Bhutan



Message No.: Enter your message number
From: Shift In-charge, Control Room

Date: 27-Feb-18
Time: 10:50

Forecast Generation & Actual Generation of Dagachhu(26-Feb-2018).



Yours faithfully,
Phub Zam