



འབྲུག་གྲོང་ཁེངས་ལྷན་ཁག་།

Bhutan Power Corporation Ltd.  
Bhutan Power System Operator  
Thimphu: Bhutan



Message No.: Enter your message number  
From: Shift In-charge, Control Room

Date: 26-Feb-18  
Time: 11:18

To  
Managing Director, BPC. Email: gemtshering@bpc.bt  
Director, O&MD, DGPC. Email: director.umd@drukgreen.com  
General Manager, TD, BPC. Email: ktobgye@bpc.bt  
General Manager, DCSD, BPC. Email: sandeeprai@bpc.bt

Sub: **Load Generation Balance Report of Yesterday (25-Feb-2018).**

Hours (BST)	Forecast		Actual		Hours (BST)	Forecast		Actual	
	Generation	Load	Generation	Load		Generation	Load	Generation	Load
0:00	269.40	274.90	262.72	283.48	12:00	269.40	291.20	270.37	301.56
0:15	269.40	273.80	265.23	277.81	12:15	269.40	291.30	269.14	295.46
0:30	269.40	273.00	264.75	277.93	12:30	269.40	295.00	269.17	300.88
0:45	269.40	270.50	264.33	277.34	12:45	269.40	291.10	268.01	299.77
1:00	269.40	271.90	263.38	278.46	13:00	269.40	289.50	270.48	297.91
1:15	269.40	272.60	263.38	274.37	13:15	269.40	291.80	267.45	293.21
1:30	269.40	272.90	264.55	275.66	13:30	269.40	290.70	265.39	285.39
1:45	269.40	271.50	265.55	271.93	13:45	269.40	289.50	266.30	293.89
2:00	269.40	269.80	261.82	267.20	14:00	269.40	285.60	264.80	289.62
2:15	269.40	267.10	273.06	271.03	14:15	269.40	287.90	263.72	301.62
2:30	269.40	258.70	272.97	270.85	14:30	269.40	288.90	262.73	297.77
2:45	269.40	260.80	273.98	267.98	14:45	269.40	286.30	261.80	297.82
3:00	269.40	262.50	273.09	274.01	15:00	269.40	287.90	261.88	298.66
3:15	269.40	263.50	273.85	268.44	15:15	269.40	288.90	261.09	297.67
3:30	269.40	265.20	273.42	265.95	15:30	269.40	290.40	260.32	303.29
3:45	269.40	264.20	274.14	262.88	15:45	269.40	291.00	262.29	304.39
4:00	269.40	265.60	273.92	270.81	16:00	269.40	291.10	261.68	300.10
4:15	269.40	266.60	272.91	271.86	16:15	269.40	297.20	264.98	301.02
4:30	269.40	267.70	273.11	274.02	16:30	269.40	297.40	265.24	304.57
4:45	269.40	266.00	273.18	267.50	16:45	269.40	299.40	264.73	304.95
5:00	269.40	272.20	273.18	269.10	17:00	282.30	300.20	264.10	308.18
5:15	269.40	273.70	281.40	273.30	17:15	282.30	302.40	275.27	316.90
5:30	269.40	272.50	279.18	276.20	17:30	282.30	304.00	275.05	316.02
5:45	269.40	272.50	280.45	278.48	17:45	282.30	306.00	275.58	322.19
6:00	269.40	267.30	279.81	282.46	18:00	282.30	313.40	275.63	327.74
6:15	282.30	250.30	279.49	290.55	18:15	282.30	317.20	276.24	335.78
6:30	282.30	244.70	289.70	293.73	18:30	282.30	323.10	274.79	346.53
6:45	282.30	240.00	290.39	300.64	18:45	282.30	328.00	275.55	356.80
7:00	282.30	240.70	290.15	306.97	19:00	282.30	325.90	275.35	358.72
7:15	282.30	240.50	290.01	300.74	19:15	282.30	328.60	294.95	359.82
7:30	282.30	259.30	289.27	291.30	19:30	282.30	325.90	294.65	354.60
7:45	282.30	294.70	290.13	303.29	19:45	282.30	320.00	294.58	350.95
8:00	282.30	313.30	286.53	307.87	20:00	282.30	317.90	293.77	341.47
8:15	282.30	315.40	280.89	313.05	20:15	282.30	317.20	297.24	334.34
8:30	282.30	308.70	281.34	316.02	20:30	282.30	315.40	298.82	332.23
8:45	282.30	309.30	280.55	316.57	20:45	282.30	312.10	298.05	328.43
9:00	269.40	302.70	280.91	317.65	21:00	269.40	307.50	296.78	324.82
9:15	269.40	301.10	280.84	318.89	21:15	269.40	306.50	298.59	320.36
9:30	269.40	301.10	280.70	314.39	21:30	269.40	303.90	298.15	316.95
9:45	269.40	296.50	281.34	313.16	21:45	269.40	297.60	298.92	308.57
10:00	269.40	296.50	281.02	305.75	22:00	269.40	295.50	299.14	296.24
10:15	269.40	291.80	270.95	305.08	22:15	269.40	291.60	284.69	297.36
10:30	269.40	292.30	259.64	300.05	22:30	269.40	290.80	282.86	293.73
10:45	269.40	290.90	261.53	303.36	22:45	269.40	287.40	283.70	267.05
11:00	269.40	287.90	261.16	296.35	23:00	269.40	282.80	283.95	274.22
11:15	269.40	290.30	256.12	296.80	23:15	269.40	279.50	283.93	277.09
11:30	269.40	287.50	267.23	294.07	23:30	269.40	279.50	282.51	268.91
11:45	269.40	291.10	269.81	299.04	23:45	269.40	277.10	282.87	263.61

Yours faithfully  
Karma Choden

Coincidental peak load of Day(Last year):	
314.86 MW	25-Feb-17
Maximum Load till date:	
375.23 MW	24-Feb-18



འབྲུག་གྲོག་མེ་ལས་འཛིན།

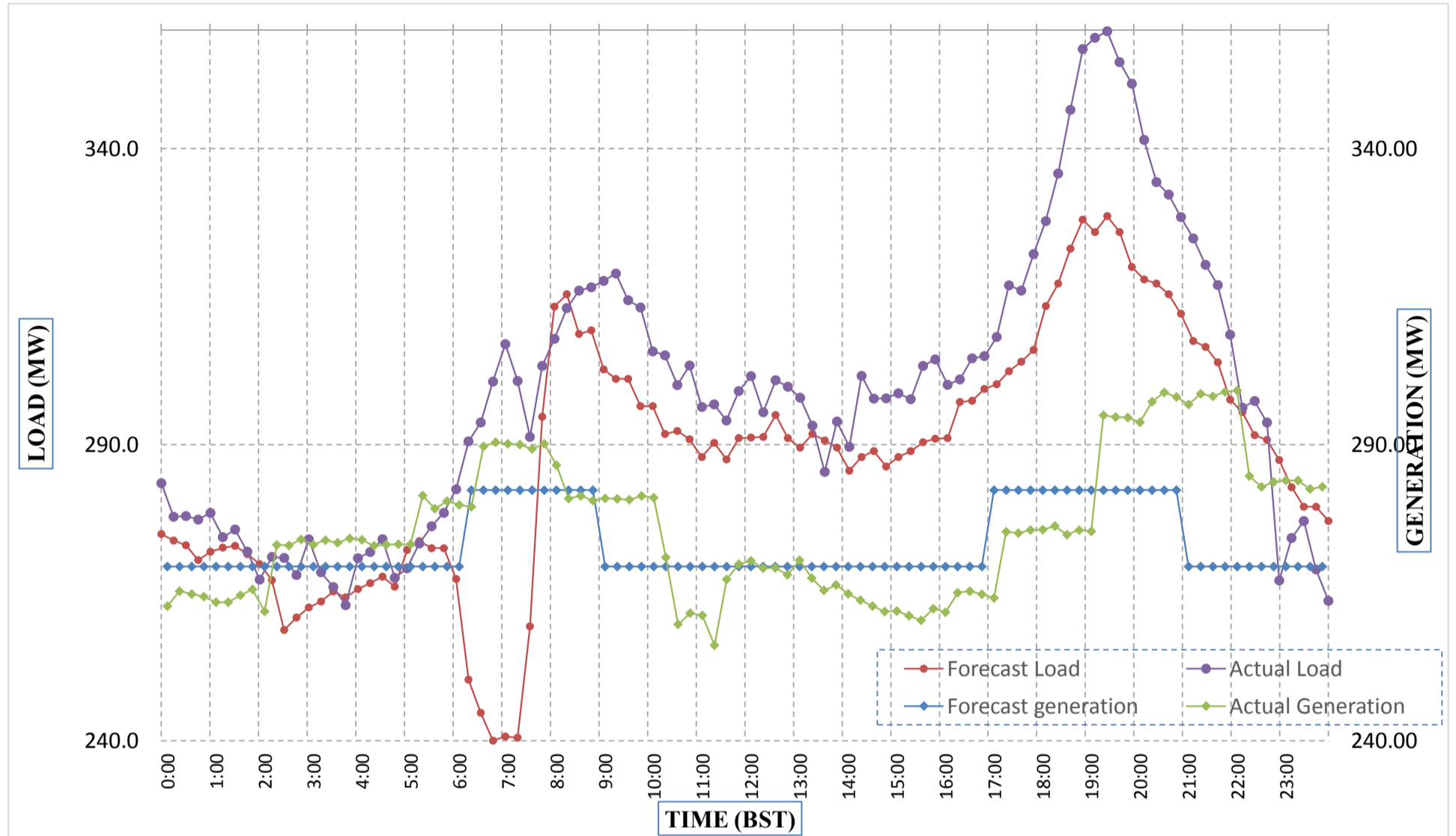
Bhutan Power Corporation Ltd.  
 Bhutan Power System Operator  
 Thimphu: Bhutan



Message No.: Enter your message number  
 From: Shift In-charge, Control Room

Date: 26-Feb-18  
 Time: 11:18

Forecast Generation & Load with Actual Generation & Load (25-Feb-2018).



Yours faithfully,  
 Karma Choden

	MW	Coincidental peak load of Day(Last year):	
Peak Co-incident Generation(25-Feb-2018).	299.14	314.86 MW	25-Feb-17
Peak Co-incident Load(25-Feb-2018).	359.82		
		Maximum Load till date:	
		375.23 MW	24-Feb-18

Telephone: +975-02335631; Fax: +975-02335632; Email: bhutansystemoperator@bpc.bt; www.bpc.bt



ཕྱག་ལུགས་ལྷན་ཁག་ལེ་ལས་འཛིན།

Bhutan Power Corporation Ltd.  
Bhutan Power System Operator  
Thimphu: Bhutan



Message No.: Enter your message number  
From: Shift In-charge, Control Room

Date: 26-Feb-18  
Time: 11:18

To  
Managing Director, BPC. Email: gemtshering@bpc.bt  
Director, O&MD, DGPC. Email: director.umd@drukgreen.com  
General Manager, TD, BPC. Email: thinleygyeltshen@bpc.bt  
General Manager, DCSD, BPC. Email: sandeeprai@bpc.bt

Sub: Load Generation Balance Report of Today (26-Feb-2018).

Hours (BST)	Forecast		Actual	
	Generation	Load	Generation	Load
0:00	266.40	276.70	282.78	268.02
0:15	266.40	273.30	284.86	269.06
0:30	266.40	273.80	283.66	269.92
0:45	266.40	269.90	282.60	266.24
1:00	266.40	272.10	284.62	264.49
1:15	266.40	274.30	283.07	264.03
1:30	266.40	274.80	284.79	261.73
1:45	266.40	274.50	282.92	264.63
2:00	266.40	272.90	283.92	265.86
2:15	266.40	271.10	282.46	263.10
2:30	264.60	265.50	282.05	262.27
2:45	266.00	266.20	281.70	262.09
3:00	266.40	266.40	280.37	267.75
3:15	266.40	266.40	280.98	261.59
3:30	266.40	269.50	281.80	265.19
3:45	266.40	269.10	281.00	267.48
4:00	266.40	269.00	281.38	268.77
4:15	266.40	268.30	280.21	259.88
4:30	266.40	271.20	282.51	264.07
4:45	266.40	271.60	282.55	269.13
5:00	266.40	280.60	280.13	272.50
5:15	266.40	282.60	280.52	280.52
5:30	266.40	282.90	282.23	284.13
5:45	266.40	283.20	280.12	285.39
6:00	266.40	286.10	281.51	290.88
6:15	277.40	281.30	292.82	310.45
6:30	277.40	283.80	290.88	321.59
6:45	277.40	281.80	291.81	338.96
7:00	275.00	276.20	292.73	341.35
7:15	277.40	278.30	291.41	341.59
7:30	277.40	291.40	292.80	282.11
7:45	277.40	304.70	292.64	304.15
8:00	277.40	316.50	291.18	317.01
8:15	277.40	316.00	291.64	358.92
8:30	277.40	310.30	221.05	316.02
8:45	277.40	308.30	270.82	314.76
9:00	277.40	304.70	271.16	316.80

Yours faithfully,  
Karma Choden

Coincidental peak load of Day(Last year):	
321.34 MW	26-Feb-17

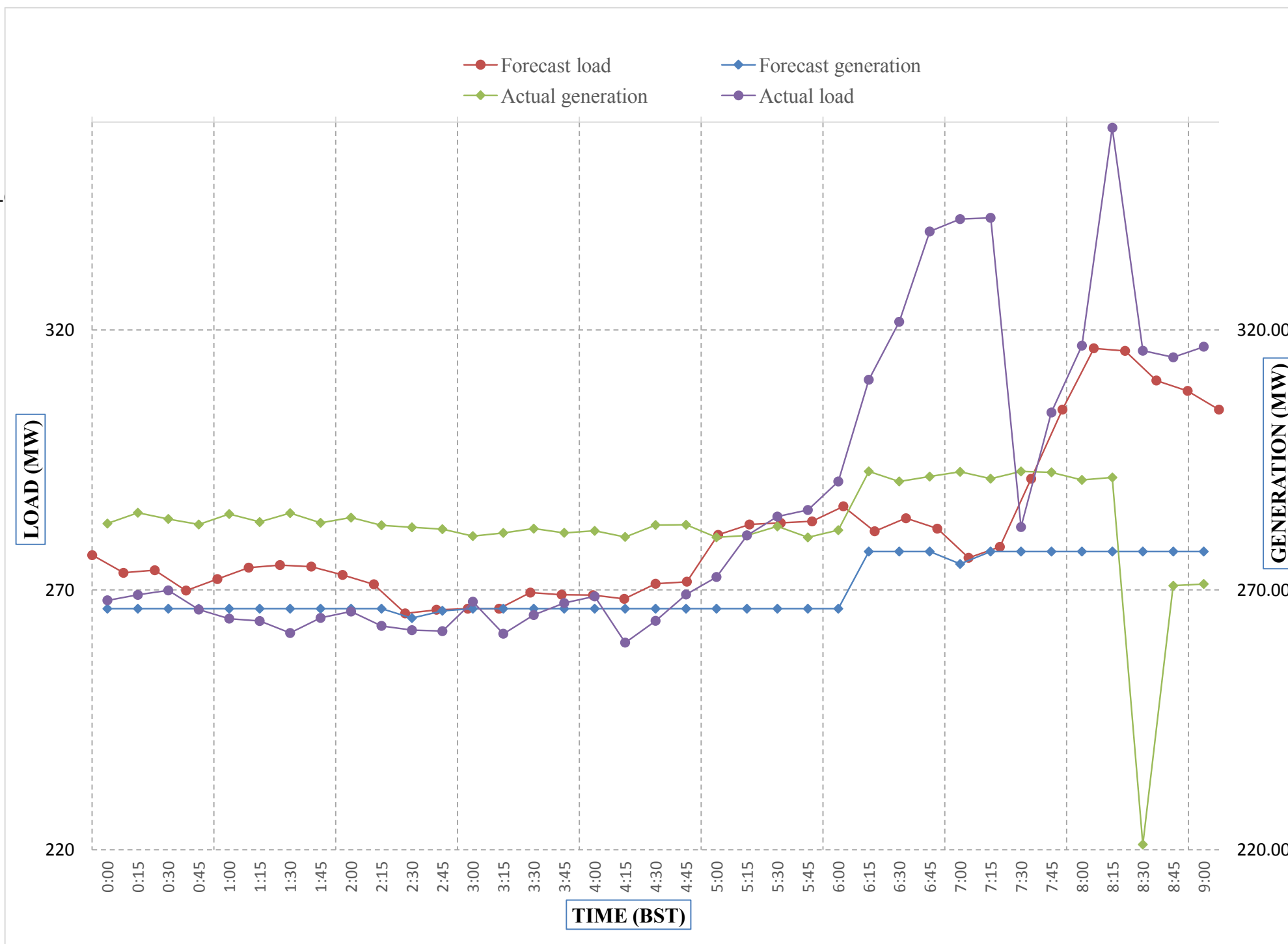
Maximum Load till date:	
375.23 MW	24-Feb-18



Message No.: Enter your message number  
 From: Shift In-charge, Control Room

2/26/2018 11:18 26-Feb-18  
 2/26/2018 11:18 11:18

**Forecast Generation & Load with Actual Generation & Load of Today from 00:00hrs to 09:00hrs(26-Feb-2018).**



Yours faithfully  
 Karma Choden

<b>Coincidental peak load of Day(Last)</b>	
321.34 MW	26-Feb-17
<b>Maximum Load till date:</b>	
375.23 MW	24-Feb-18



འབྲུག་གྲོག་ལེ་ལས་འཛིན།  
**Bhutan Power Corporation Ltd.**  
**Bhutan Power System Operator**  
 Thimphu: Bhutan



**Message No.:** Enter your message number **Date:** 26-Feb-18  
**From:** Shift In-charge, Control Room **Time:** 11:18

**To**  
 Managing Director, BPC. Email: gemtshering@bpc.bt  
 Director, O&MD, DGPC. Email: director.umd@drukgreen.com  
 General Manager, TD, BPC. Email: ktobgye@bpc.bt  
 Advisor, BPC. Email: bharrattamang@bpc.bt

**Sub:** Load Generation Balance Report of Tomorrow (27-Feb-2018).

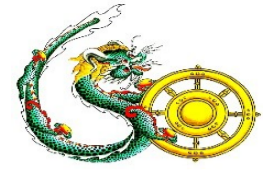
Hours (BST)	Forecast		Hours (BST)	Forecast	
	Generation	Load		Generation	Load
0:00	262.20	277.60	12:00	262.20	295.10
0:15	262.20	274.10	12:15	262.20	295.90
0:30	262.20	274.90	12:30	262.20	298.00
0:45	262.20	271.70	12:45	262.20	296.40
1:00	262.20	272.90	13:00	262.20	293.30
1:15	262.20	274.10	13:15	262.20	294.50
1:30	262.20	274.60	13:30	262.20	289.80
1:45	262.20	273.90	13:45	262.20	294.10
2:00	262.20	272.50	14:00	262.20	288.00
2:15	262.20	269.80	14:15	262.20	291.10
2:30	262.20	266.40	14:30	262.20	290.80
2:45	262.20	267.50	14:45	262.20	289.50
3:00	262.20	267.30	15:00	262.20	292.50
3:15	262.20	267.20	15:15	262.20	292.80
3:30	262.20	268.00	15:30	262.20	294.00
3:45	262.20	267.20	15:45	262.20	296.50
4:00	262.20	269.90	16:00	262.20	296.50
4:15	262.20	269.00	16:15	262.20	302.70
4:30	262.20	271.00	16:30	262.20	304.90
4:45	262.20	271.50	16:45	262.20	304.40
5:00	262.20	277.90	17:00	262.20	308.10
5:15	262.20	280.50	17:15	273.20	312.00
5:30	262.20	282.00	17:30	273.20	315.50
6:45	262.20	282.50	17:45	273.20	316.60
6:00	262.20	285.50	18:00	273.20	324.00
6:15	273.20	287.10	18:15	273.20	330.80
6:30	273.20	290.90	18:30	273.20	338.50
6:45	273.20	292.20	18:45	273.20	344.80
7:00	273.20	296.40	19:00	273.20	344.30
7:15	273.20	299.90	19:15	273.20	343.40
7:30	273.20	307.80	19:30	273.20	341.40
7:45	273.20	314.50	19:45	273.20	336.70
8:00	273.20	316.00	20:00	273.20	331.30
8:15	273.20	315.50	20:15	273.20	328.70
8:30	273.20	311.90	20:30	273.20	326.60
8:45	273.20	310.30	20:45	273.20	322.60
9:00	273.20	308.30	21:00	273.20	319.00
9:15	262.20	308.30	21:15	262.20	315.10
9:30	262.20	307.60	21:30	262.20	311.40
9:45	262.20	304.10	21:45	262.20	304.70
10:00	262.20	303.00	22:00	262.20	301.90
10:15	262.20	300.60	22:15	262.20	295.20
10:30	262.20	295.00	22:30	262.20	293.60
10:45	262.20	294.80	22:45	262.20	287.20
11:00	262.20	294.10	23:00	262.20	283.30
11:15	262.20	295.30	23:15	262.20	281.70
11:30	262.20	292.20	23:30	262.20	277.40
11:45	262.20	295.30	23:45	262.20	275.60

Yours faithfully,  
 Karma Choden



འབྲུག་གྲོག་མེ་ལས་འཛིན།

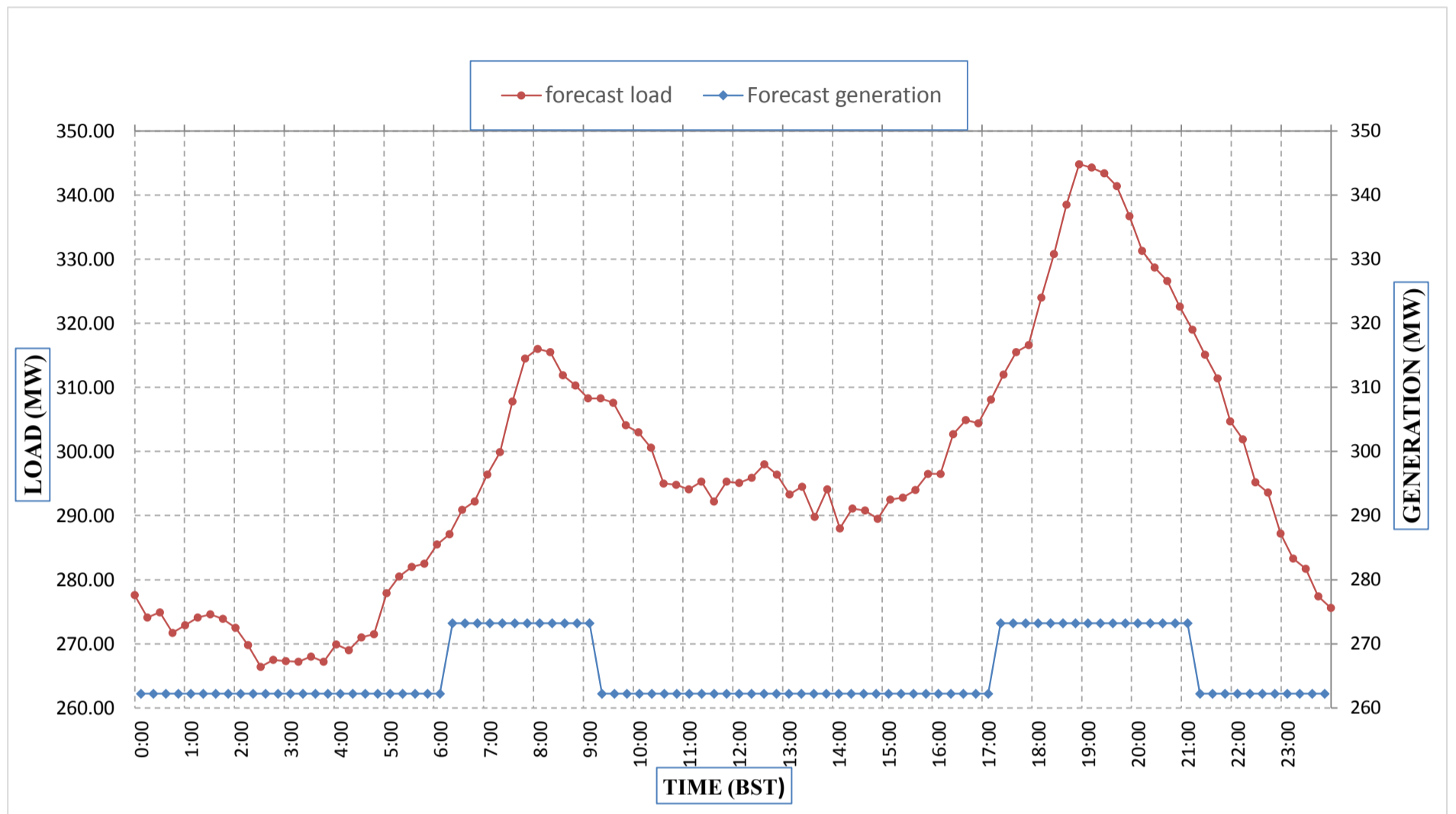
Bhutan Power Corporation Ltd.  
Bhutan Power System Operator  
Thimphu: Bhutan



Message No.: Enter your message number  
From: Shift In-charge, Control Room

Date: 26-Feb-18  
Time: 11:18

Forecast Generation & Load Forecast for Tomorrow (27-Feb-2018).



Yours faithfully,  
Karma Choden

	MW
Scheduled Peak Generation(27-Feb-2018).	273.20
Forecast Peak Load(27-Feb-2018).	344.80



ཕྱག་ཇུག་ལྷན་ཁག་ལྟན་འགྲུབ་ལྷན་ཁག་།

Bhutan Power Corporation Ltd.  
Bhutan Power System Operator  
Thimphu: Bhutan



Message No.: Enter your message number Date: 26-Feb-18  
From: Shift In-charge, Control Room Time: 11:18

To  
Managing Director, BPC. Email: gemtshering@bpc.bt  
Director, O&MD, DGPC. Email: director.umd@drukgreen.com  
General Manager, TD, BPC. Email: ktobgye@bpc.bt  
Advisor, BPC. Email: bharattamang@bpc.bt

Sub: Forecast Generation and Actual Generation of Dagachhu (25-Feb-2018).

Hours (BST)	Actual Frequency	Forecast Generation	Actual Generation	Hours (BST)	Actual Frequency	Forecast Generation	Actual Generation
0:00	49.94	18.00	17.67	12:00	50.02	18.00	17.97
0:15	49.91	18.00	17.68	12:15	50.01	18.00	17.99
0:30	49.89	18.00	17.70	12:30	49.99	18.00	18.00
0:45	49.99	18.00	17.67	12:45	50.02	18.00	17.96
1:00	50.03	18.00	17.67	13:00	50.04	18.00	18.00
1:15	50.02	18.00	17.67	13:15	50.02	18.00	18.02
1:30	49.99	18.00	17.67	13:30	50.02	18.00	17.92
1:45	50.01	18.00	17.66	13:45	50.03	18.00	18.00
2:00	49.98	18.00	17.66	14:00	50.05	18.00	17.99
2:15	50.00	18.00	17.67	14:15	50.01	18.00	17.97
2:30	50.00	18.00	17.67	14:30	49.97	18.00	17.99
2:45	50.05	18.00	17.72	14:45	49.97	18.00	17.64
3:00	50.04	18.00	17.72	15:00	50.00	18.00	17.73
3:15	50.02	18.00	17.66	15:15	49.98	18.00	17.68
3:30	50.01	18.00	17.67	15:30	50.01	18.00	17.67
3:45	50.03	18.00	17.68	15:45	50.01	18.00	17.68
4:00	49.98	18.00	17.70	16:00	50.02	18.00	17.69
4:15	50.00	18.00	17.66	16:15	49.97	18.00	17.67
4:30	50.01	18.00	17.66	16:30	49.93	18.00	17.66
4:45	49.99	18.00	17.66	16:45	49.95	18.00	17.69
5:00	49.94	18.00	17.66	17:00	49.99	18.00	17.97
5:15	50.00	18.00	17.66	17:15	50.01	18.00	18.02
5:30	50.03	18.00	17.66	17:30	49.99	18.00	18.00
6:45	50.08	18.00	17.66	17:45	50.03	18.00	17.96
6:00	50.08	18.00	17.68	18:00	50.04	18.00	17.99
6:15	50.04	18.00	17.90	18:15	50.03	18.00	18.00
6:30	49.99	18.00	17.87	18:30	49.95	18.00	17.99
6:45	50.01	18.00	17.77	18:45	49.95	18.00	17.99
7:00	50.01	18.00	17.80	19:00	49.94	18.00	17.99
7:15	50.03	18.00	17.97	19:15	49.97	18.00	17.98
7:30	49.99	18.00	17.99	19:30	50.00	18.00	18.00
7:45	50.03	18.00	18.00	19:45	50.02	18.00	17.99
8:00	49.96	18.00	17.99	20:00	49.99	18.00	18.01
8:15	49.94	18.00	17.99	20:15	49.97	18.00	17.97
8:30	49.96	18.00	17.98	20:30	49.96	18.00	17.98
8:45	49.96	18.00	18.00	20:45	49.96	18.00	18.00
9:00	49.91	18.00	17.99	21:00	49.94	18.00	18.01
9:15	49.95	18.00	17.98	21:15	49.98	18.00	17.98
9:30	49.99	18.00	18.00	21:30	50.02	18.00	17.99
9:45	50.03	18.00	18.00	21:45	50.05	18.00	17.98
10:00	50.02	18.00	18.01	22:00	49.92	18.00	17.97
10:15	50.00	18.00	18.01	22:15	49.97	18.00	17.98
10:30	50.01	18.00	17.99	22:30	50.00	18.00	17.98
10:45	50.03	18.00	17.99	22:45	50.00	18.00	17.98
11:00	49.99	18.00	17.99	23:00	50.00	18.00	17.98
11:15	50.00	18.00	18.02	23:15	50.02	18.00	17.98
11:30	50.01	18.00	17.96	23:30	49.99	18.00	17.96
11:45	50.00	18.00	17.98	23:45	50.03	18.00	17.67

Yours faithfully,  
Karma Choden



ཕྱག་ལུགས་ལེ་ལས་འཛིན།

Bhutan Power Corporation Ltd.

Bhutan Power System Operator

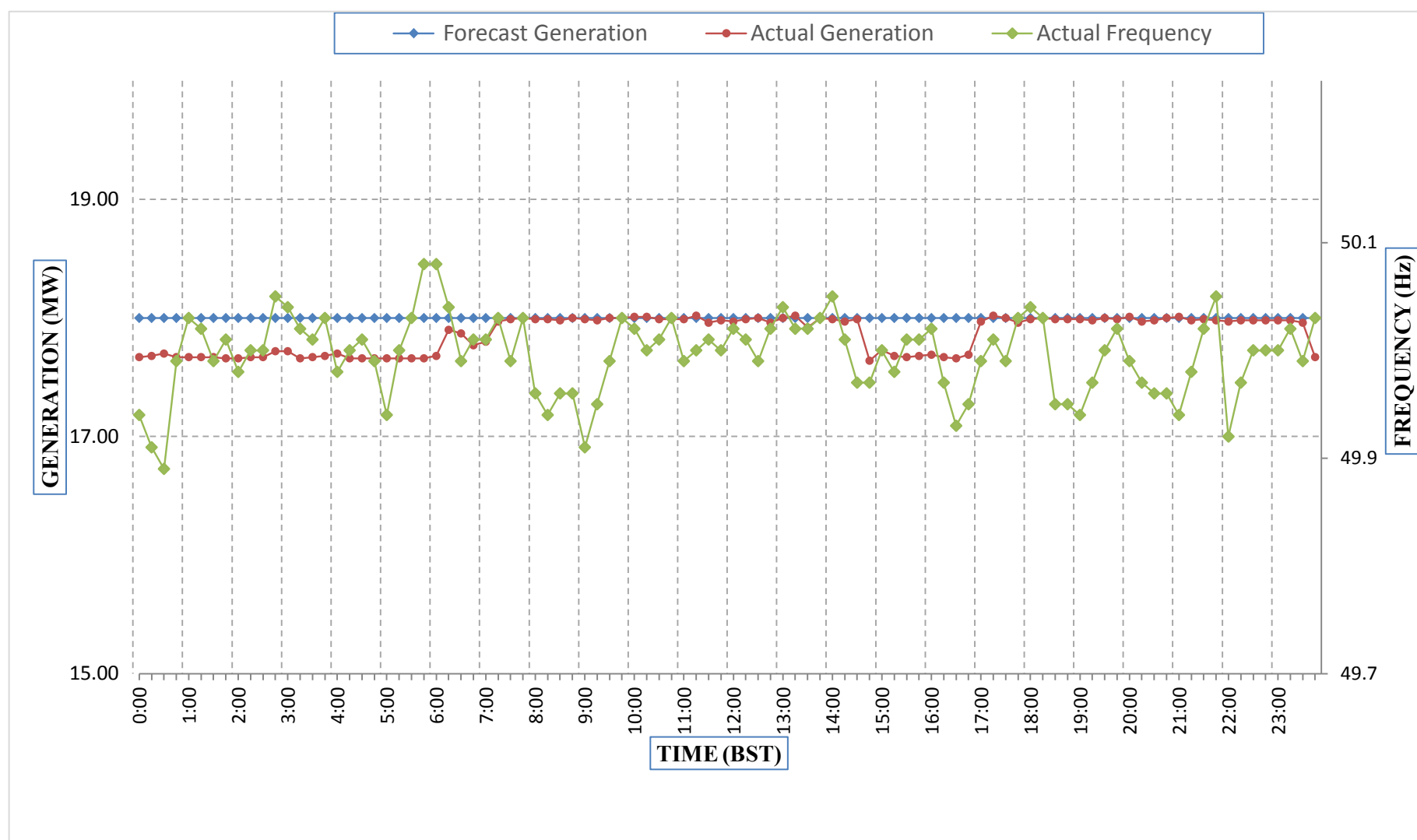
Thimphu: Bhutan



Message No.: Enter your message number  
From: Shift In-charge, Control Room

Date: 26-Feb-18  
Time: 11:18

Forecast Generation & Actual Generation of Dagachhu(25-Feb-2018).



Yours faithfully,  
Karma Choden