



འབྲུག་རྒྱལ་ཁོག་གི་ལས་འདེན།

Bhutan Power Corporation Ltd.  
Bhutan Power System Operator  
Thimphu: Bhutan



Message No.: Enter your message number  
From: Shift In-charge, Control Room

Date: 24-Feb-18  
Time: 10:34

To  
Managing Director, BPC. Email: gemtshering@bpc.bt  
Director, O&MD, DGPC. Email: director.umd@drukgreen.com  
General Manager, TD, BPC. Email: ktobgye@bpc.bt  
General Manager, DCSD, BPC. Email: sandeeprai@bpc.bt

Sub: **Load Generation Balance Report of Yesterday (23-Feb-2018).**

Hours (BST)	Forecast		Actual		Hours (BST)	Forecast		Actual	
	Generation	Load	Generation	Load		Generation	Load	Generation	Load
0:00	264.00	274.20	286.27	268.17	12:00	263.00	292.30	286.13	303.16
0:15	264.00	275.90	287.07	263.70	12:15	265.00	293.10	285.37	295.89
0:30	264.00	274.20	286.27	262.54	12:30	265.00	295.10	286.71	301.13
0:45	264.00	273.10	287.80	261.80	12:45	265.00	292.50	286.26	296.05
1:00	264.00	272.50	287.82	263.11	13:00	265.00	290.80	286.33	290.74
1:15	264.00	274.60	287.48	260.56	13:15	266.00	292.40	286.78	295.93
1:30	264.00	274.30	286.61	263.92	13:30	266.00	289.30	286.27	293.55
1:45	264.00	277.20	286.50	252.16	13:45	266.00	285.70	286.80	294.94
2:00	264.00	274.10	286.95	251.00	14:00	266.00	285.50	285.67	287.91
2:15	264.00	269.50	287.16	253.34	14:15	263.00	287.00	286.54	290.94
2:30	264.00	261.50	286.38	242.82	14:30	263.00	290.60	285.88	292.42
2:45	264.00	263.60	287.97	241.73	14:45	263.00	292.00	286.13	290.63
3:00	264.00	263.60	287.09	242.52	15:00	263.00	293.10	286.88	296.34
3:15	264.00	265.50	287.00	248.94	15:15	265.00	293.70	286.15	281.55
3:30	264.00	263.30	286.09	256.59	15:30	265.00	294.90	284.23	286.75
3:45	264.00	260.80	288.12	249.95	15:45	265.00	295.90	283.85	282.80
4:00	264.00	253.40	287.99	251.93	16:00	265.00	293.40	284.47	289.48
4:15	263.00	230.80	288.71	254.95	16:15	266.00	296.00	273.59	301.02
4:30	263.00	223.00	289.73	252.93	16:30	266.00	292.90	274.55	307.47
4:45	263.00	219.20	289.91	253.62	16:45	266.00	298.20	273.80	297.98
5:00	263.00	228.10	289.52	258.97	17:00	266.00	301.70	273.98	301.69
5:15	264.00	233.60	288.41	257.63	17:15	276.00	305.70	285.04	298.28
5:30	264.00	240.30	288.24	264.85	17:30	276.00	309.60	285.99	300.65
5:45	264.00	248.30	288.65	266.61	17:45	276.00	310.60	286.13	300.27
6:00	264.00	251.40	288.40	270.92	18:00	276.00	315.80	285.15	309.88
6:15	274.90	264.90	288.14	267.04	18:15	274.90	323.90	205.41	314.14
6:30	274.90	289.30	299.97	280.28	18:30	274.90	328.30	205.06	322.64
6:45	274.90	302.20	296.53	286.11	18:45	274.90	329.70	285.93	327.01
7:00	274.90	310.40	298.29	291.27	19:00	274.90	332.50	284.65	308.36
7:15	273.10	309.90	297.63	291.86	19:15	274.90	330.80	364.88	317.98
7:30	273.10	288.40	297.55	299.23	19:30	274.90	327.60	284.65	323.23
7:45	273.10	278.30	298.41	299.17	19:45	274.90	323.20	286.27	320.78
8:00	273.10	260.20	297.29	299.49	20:00	274.90	319.90	284.59	310.80
8:15	274.90	259.40	298.57	305.25	20:15	276.00	318.90	284.77	317.16
8:30	274.90	277.60	299.12	308.37	20:30	276.00	318.70	285.12	314.78
8:45	274.90	308.30	298.97	310.11	20:45	276.00	316.00	285.18	303.69
9:00	274.90	301.70	297.50	310.41	21:00	276.00	309.70	285.27	305.45
9:15	265.00	299.10	298.88	309.16	21:15	265.00	308.40	273.91	299.16
9:30	265.00	299.50	298.59	314.89	21:30	265.00	306.10	274.13	297.88
9:45	265.00	299.30	297.79	308.51	21:45	265.00	304.20	274.02	289.53
10:00	265.00	296.70	297.48	312.06	22:00	265.00	300.80	273.87	287.54
10:15	265.00	294.40	286.54	305.03	22:15	263.00	294.50	273.92	285.77
10:30	265.00	296.30	285.28	297.64	22:30	263.00	294.00	274.09	279.16
10:45	265.00	295.50	285.48	302.05	22:45	263.00	289.50	273.74	278.90
11:00	265.00	293.10	285.62	289.66	23:00	263.00	286.00	353.48	280.03
11:15	263.00	293.50	284.63	299.70	23:15	263.00	284.90	292.48	274.55
11:30	263.00	289.90	286.26	300.77	23:30	263.00	283.70	277.63	273.08
11:45	263.00	292.30	285.84	300.85	23:45	263.00	280.50	275.62	277.75

Yours faithfully  
Pema Lhamo

Coincidental peak load of Day(Last year):	
295.9MW	23-Feb-17
Maximum Load till date:	
362.09	14-Nov-17



འབྲུག་གྲོག་མེ་ལས་འཛིན།

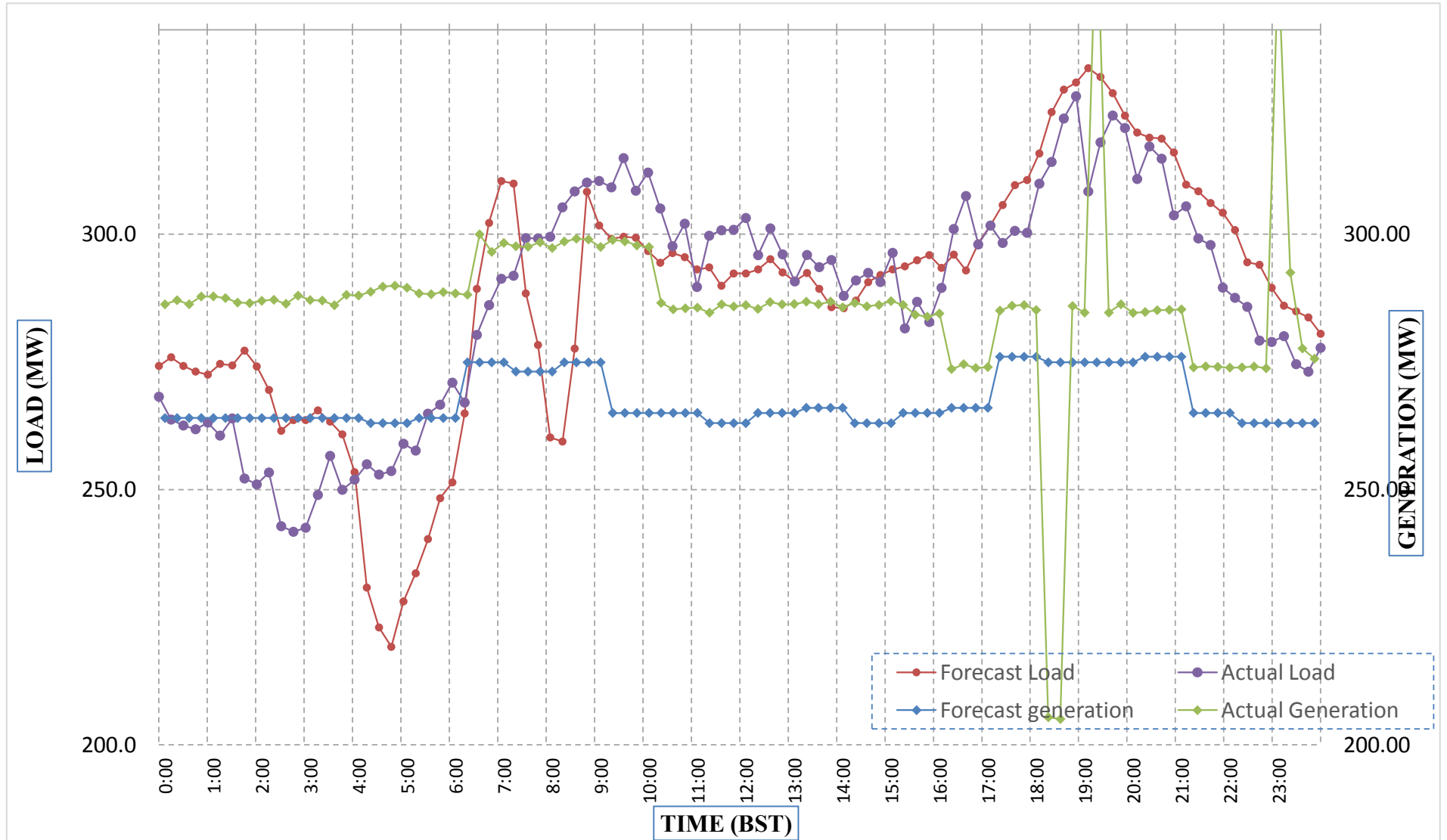
Bhutan Power Corporation Ltd.  
 Bhutan Power System Operator  
 Thimphu: Bhutan



Message No.: Enter your message number  
 From: Shift In-charge, Control Room

Date: 24-Feb-18  
 Time: 10:34

Forecast Generation & Load with Actual Generation & Load (23-Feb-2018).



Yours faithfully,  
 Pema Lhamo

	MW	Coincidental peak load of Day(Last year):	
Peak Co-incident Generation(23-Feb-2018).	364.88	295.9MW	23-Feb-17
Peak Co-incident Load(23-Feb-2018).	327.01		
		Maximum Load till date:	
		362.09	14-Nov-17

Telephone: +975-02335631; Fax: +975-02335632; Email: bhutansystemoperator@bpc.bt; www.bpc.bt



ཕྱག་ལུགས་ལྷན་ཁག་ལེ་ལས་འཛིན།

Bhutan Power Corporation Ltd.  
Bhutan Power System Operator  
Thimphu: Bhutan



Message No.: Enter your message number  
From: Shift In-charge, Control Room

Date: 24-Feb-18  
Time: 10:34

To  
Managing Director, BPC. Email: gemtshering@bpc.bt  
Director, O&MD, DGPC. Email: director.omb@drukgreen.com  
General Manager, TD, BPC. Email: thinleygyeltshen@bpc.bt  
General Manager, DCSD, BPC. Email: sandeeprai@bpc.bt

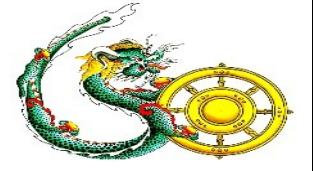
Sub: Load Generation Balance Report of Today (24-Feb-2018).

Hours (BST)	Forecast		Actual	
	Generation	Load	Generation	Load
0:00	280.40	276.20	275.56	279.58
0:15	280.40	277.10	275.69	276.09
0:30	280.40	275.70	274.52	273.63
0:45	280.40	274.30	274.14	273.10
1:00	280.40	274.70	274.13	268.26
1:15	280.40	275.00	273.87	273.68
1:30	280.40	276.40	274.01	276.47
1:45	280.40	277.70	274.65	274.72
2:00	280.40	274.90	274.31	272.03
2:15	280.40	272.40	274.22	275.69
2:30	280.40	264.20	274.27	281.00
2:45	280.40	266.70	274.11	276.66
3:00	280.40	268.30	274.52	267.54
3:15	280.40	268.70	274.70	273.63
3:30	280.40	269.10	274.35	271.39
3:45	280.40	269.00	274.27	275.99
4:00	280.40	270.40	273.55	273.23
4:15	280.40	268.40	274.36	275.10
4:30	280.40	269.10	273.73	271.71
4:45	280.40	266.20	274.04	277.19
5:00	280.40	272.10	274.45	278.90
5:15	280.40	271.90	273.92	283.52
5:30	280.40	258.00	273.97	274.39
5:45	280.40	251.00	273.98	273.88
6:00	294.20	240.10	274.24	281.80
6:15	294.20	233.50	273.74	289.73
6:30	294.20	238.40	274.21	295.26
6:45	294.20	242.30	274.06	301.29
7:00	294.20	244.20	285.41	308.98
7:15	294.20	245.20	285.57	316.99
7:30	294.20	238.30	284.59	319.41
7:45	294.20	256.90	285.41	320.28
8:00	294.20	289.20	284.77	316.63
8:15	294.20	310.00	285.09	316.73
8:30	294.20	308.90	284.96	313.55
8:45	294.20	307.40	285.18	307.04
9:00	280.40	299.30	295.55	310.33

Yours faithfully,  
Pema Lhamo

Coincidental peak load of Day(Last year):	
329.26	24-Feb-17

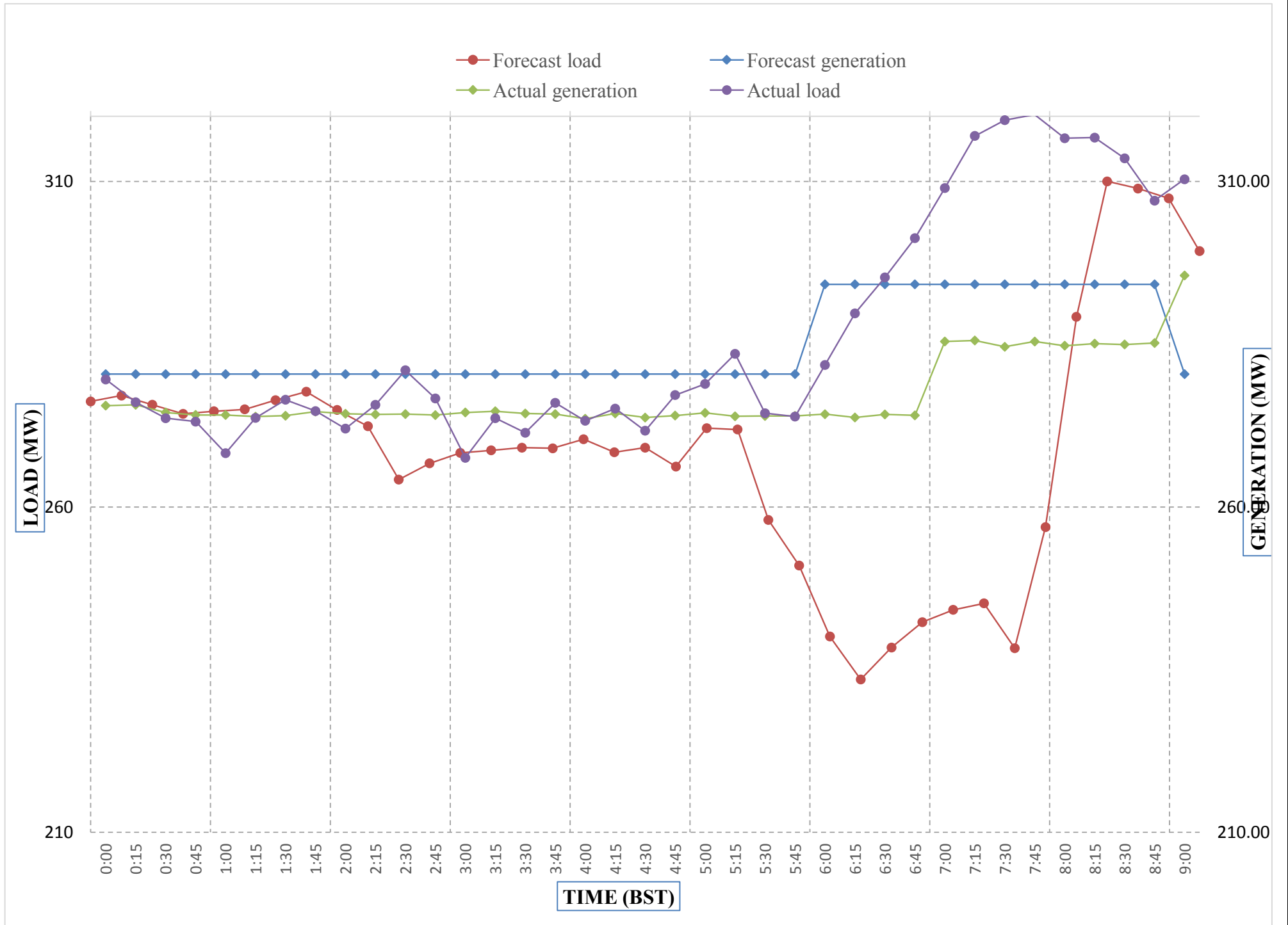
Maximum Load till date:	
362.09	14-Nov-17



**Message No.:** Enter your message number  
**From:** Shift In-charge, Control Room

**Date:** 24-Feb-18  
**Time:** 10:34

**Forecast Generation & Load with Actual Generation & Load of Today from 00:00hrs to 09:00hrs(24-Feb-2018).**



Yours faithfully  
 Pema Lhamo

Coincidental peak load of Day(Last)	
272.75	24-Feb-17

Maximum Load till date:	
205.4101563	9-Nov-00



འབྲུག་གྲོག་ལེ་ལས་འཛིན།  
**Bhutan Power Corporation Ltd.**  
**Bhutan Power System Operator**  
 Thimphu: Bhutan



**Message No.:** Enter your message number **Date:** 24-Feb-18  
**From:** Shift In-charge, Control Room **Time:** 10:34

**To**  
 Managing Director, BPC. Email: gemtshering@bpc.bt  
 Director, O&MD, DGPC. Email: director.umd@drukgreen.com  
 General Manager, TD, BPC. Email: ktobgye@bpc.bt  
 Advisor, BPC. Email: bharrattamang@bpc.bt

**Sub:** Load Generation Balance Report of Tomorrow (25-Feb-2018).

Hours (BST)	Forecast		Hours (BST)	Forecast	
	Generation	Load		Generation	Load
0:00	269.40	274.90	12:00	269.40	291.20
0:15	269.40	273.80	12:15	269.40	291.30
0:30	269.40	273.00	12:30	269.40	295.00
0:45	269.40	270.50	12:45	269.40	291.10
1:00	269.40	271.90	13:00	269.40	289.50
1:15	269.40	272.60	13:15	269.40	291.80
1:30	269.40	272.90	13:30	269.40	290.70
1:45	269.40	271.50	13:45	269.40	289.50
2:00	269.40	269.80	14:00	269.40	285.60
2:15	269.40	267.10	14:15	269.40	287.90
2:30	269.40	258.70	14:30	269.40	288.90
2:45	269.40	260.80	14:45	269.40	286.30
3:00	269.40	262.50	15:00	269.40	287.90
3:15	269.40	263.50	15:15	269.40	288.90
3:30	269.40	265.20	15:30	269.40	290.40
3:45	269.40	264.20	15:45	269.40	291.00
4:00	269.40	265.60	16:00	269.40	291.10
4:15	269.40	266.60	16:15	269.40	297.20
4:30	269.40	267.70	16:30	269.40	297.40
4:45	269.40	266.00	16:45	269.40	299.40
5:00	269.40	272.20	17:00	282.30	300.20
5:15	269.40	273.70	17:15	282.30	302.40
5:30	269.40	272.50	17:30	282.30	304.00
6:45	269.40	272.50	17:45	282.30	306.00
6:00	269.40	267.30	18:00	282.30	313.40
6:15	282.30	250.30	18:15	282.30	317.20
6:30	282.30	244.70	18:30	282.30	323.10
6:45	282.30	240.00	18:45	282.30	328.00
7:00	282.30	240.70	19:00	282.30	325.90
7:15	282.30	240.50	19:15	282.30	328.60
7:30	282.30	259.30	19:30	282.30	325.90
7:45	282.30	294.70	19:45	282.30	320.00
8:00	282.30	313.30	20:00	282.30	317.90
8:15	282.30	315.40	20:15	282.30	317.20
8:30	282.30	308.70	20:30	282.30	315.40
8:45	282.30	309.30	20:45	282.30	312.10
9:00	269.40	302.70	21:00	269.40	307.50
9:15	269.40	301.10	21:15	269.40	306.50
9:30	269.40	301.10	21:30	269.40	303.90
9:45	269.40	296.50	21:45	269.40	297.60
10:00	269.40	296.50	22:00	269.40	295.50
10:15	269.40	291.80	22:15	269.40	291.60
10:30	269.40	292.30	22:30	269.40	290.80
10:45	269.40	290.90	22:45	269.40	287.40
11:00	269.40	287.90	23:00	269.40	282.80
11:15	269.40	290.30	23:15	269.40	279.50
11:30	269.40	287.50	23:30	269.40	279.50
11:45	269.40	291.10	23:45	269.40	277.10

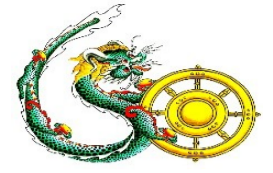
Yours faithfully,  
 Pema Lhamo





འབྲུག་གྲོག་མེ་ལས་འཛིན།

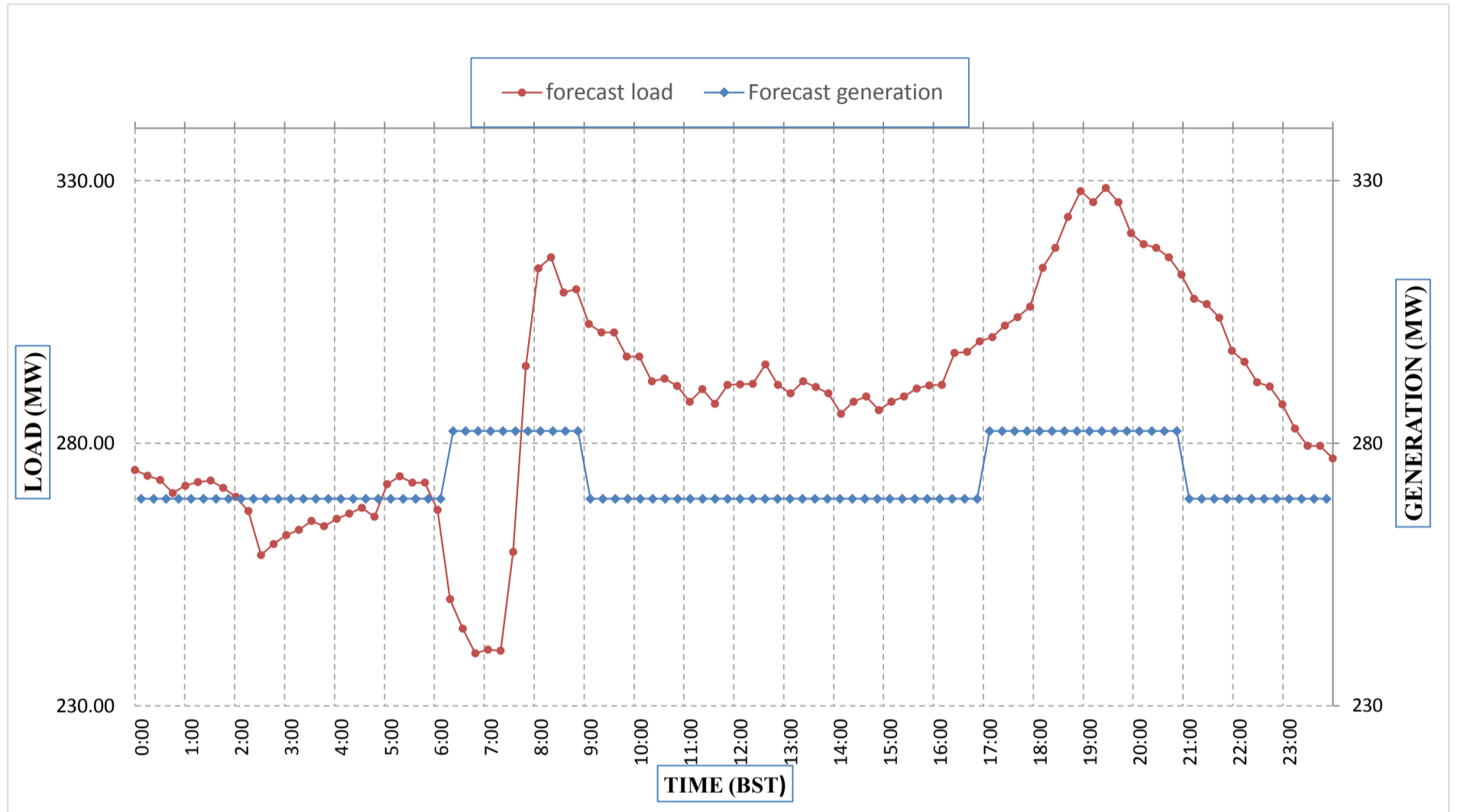
Bhutan Power Corporation Ltd.  
Bhutan Power System Operator  
Thimphu: Bhutan



Message No.: Enter your message number  
From: Shift In-charge, Control Room

Date: 24-Feb-18  
Time: 10:47

Forecast Generation & Load Forecast for Tomorrow (25-Feb-2018).



Yours faithfully,  
Pema Lhamo

	MW
Scheduled Peak Generation(25-Feb-2018).	282.30
Forecast Peak Load(25-Feb-2018).	328.60



འབྲུག་གྲོང་ཁའི་ལྷན་ཁག་གི་འཕུལ་བྱེད་ལྷན་ཁག་།

Bhutan Power Corporation Ltd.  
Bhutan Power System Operator  
Thimphu: Bhutan



Message No.: Enter your message number Date: 24-Feb-18  
From: Shift In-charge, Control Room Time: 10:34

To  
Managing Director, BPC. Email: gemtshering@bpc.bt  
Director, O&MD, DGPC. Email: director.umd@drukgreen.com  
General Manager, TD, BPC. Email: ktobgye@bpc.bt  
Advisor, BPC. Email: bharattamang@bpc.bt

Sub: Forecast Generation and Actual Generation of Dagachhu (23-Feb-2018).

Hours (BST)	Actual Frequency	Forecast Generation	Actual Generation	Hours (BST)	Actual Frequency	Forecast Generation	Actual Generation
0:00	49.93	20.00	20.19	12:00	50.00	20.00	20.17
0:15	49.93	20.00	20.21	12:15	49.97	20.00	20.18
0:30	49.93	20.00	20.19	12:30	50.00	20.00	20.20
0:45	49.96	20.00	20.19	12:45	49.94	20.00	20.19
1:00	49.97	20.00	20.67	13:00	49.99	20.00	20.22
1:15	49.98	20.00	20.68	13:15	50.05	20.00	20.19
1:30	49.95	20.00	20.70	13:30	50.01	20.00	20.17
1:45	50.00	20.00	20.71	13:45	49.99	20.00	20.17
2:00	49.97	20.00	20.67	14:00	50.03	20.00	20.16
2:15	49.98	20.00	20.70	14:15	49.99	20.00	20.21
2:30	49.94	20.00	20.69	14:30	50.01	20.00	20.17
2:45	49.98	20.00	20.68	14:45	49.98	20.00	20.17
3:00	49.95	20.00	20.67	15:00	49.94	20.00	20.21
3:15	49.94	20.00	20.66	15:15	49.92	20.00	19.22
3:30	49.95	20.00	20.68	15:30	49.95	20.00	19.19
3:45	49.96	20.00	21.80	15:45	49.94	20.00	18.68
4:00	49.90	20.00	21.78	16:00	49.92	20.00	18.71
4:15	49.94	20.00	22.74	16:15	49.92	20.00	18.66
4:30	49.97	20.00	22.71	16:30	49.92	20.00	18.69
4:45	49.93	20.00	22.71	16:45	49.95	20.00	18.68
5:00	49.90	20.00	22.69	17:00	49.91	20.00	18.66
5:15	49.84	20.00	22.71	17:15	49.97	20.00	18.72
5:30	49.92	20.00	22.73	17:30	49.98	20.00	18.70
6:45	49.97	20.00	22.70	17:45	49.99	20.00	18.69
6:00	49.95	20.00	22.71	18:00	50.05	20.00	18.72
6:15	49.88	20.00	22.73	18:15	50.01	20.00	18.70
6:30	49.77	20.00	22.70	18:30	49.92	20.00	17.69
6:45	49.86	20.00	20.20	18:45	49.88	20.00	18.20
7:00	49.91	20.00	20.20	19:00	49.84	20.00	18.22
7:15	49.95	20.00	20.21	19:15	49.92	20.00	18.21
7:30	49.93	20.00	20.17	19:30	49.97	20.00	18.22
7:45	49.98	20.00	20.65	19:45	49.97	20.00	18.21
8:00	49.93	20.00	21.23	20:00	49.94	20.00	18.20
8:15	49.91	20.00	21.21	20:15	49.89	20.00	18.24
8:30	49.94	20.00	21.20	20:30	49.95	20.00	18.22
8:45	49.99	20.00	21.21	20:45	50.00	20.00	18.20
9:00	49.91	20.00	21.20	21:00	49.98	20.00	18.20
9:15	49.90	20.00	21.23	21:15	49.97	20.00	18.21
9:30	49.93	20.00	21.21	21:30	49.96	20.00	18.22
9:45	49.99	20.00	20.18	21:45	49.97	20.00	18.21
10:00	49.91	20.00	20.18	22:00	50.08	20.00	18.22
10:15	49.99	20.00	20.19	22:15	49.94	20.00	18.23
10:30	49.93	20.00	20.19	22:30	49.97	20.00	17.95
10:45	49.93	20.00	20.19	22:45	49.87	20.00	18.02
11:00	49.94	20.00	20.18	23:00	49.96	20.00	18.21
11:15	49.93	20.00	20.17	23:15	49.97	20.00	18.20
11:30	49.90	20.00	20.18	23:30	49.95	20.00	18.20
11:45	49.91	20.00	20.17	23:45	49.94	20.00	18.19

49.92

Yours faithfully,  
Pema Lhamo



འབྲུག་གྲོག་མེ་ལས་འཛིན།

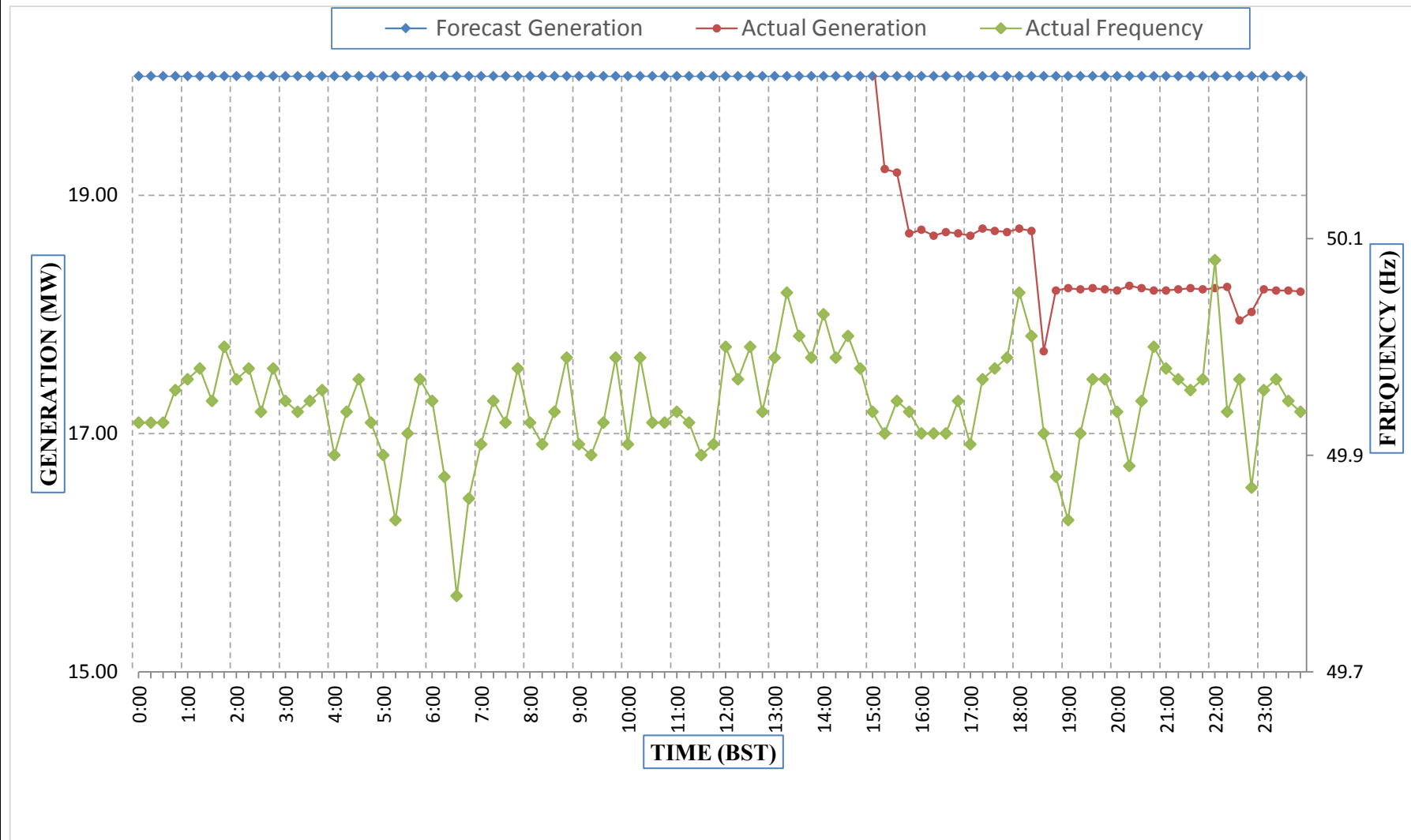
Bhutan Power Corporation Ltd.  
Bhutan Power System Operator  
Thimphu: Bhutan



Message No.: Enter your message number  
From: Shift In-charge, Control Room

Date: 24-Feb-18  
Time: 10:34

Forecast Generation & Actual Generation of Dagachhu(23-Feb-2018).



Yours faithfully,  
Pema Lhamo