



འབྲུག་གྲོག་མེ་ལམ་འཛིན།

Bhutan Power Corporation Ltd.
Bhutan Power System Operator
Thimphu: Bhutan



Message No.: Enter your message number
From: Shift In-charge, Control Room

Date: 23-Feb-18
Time: 10:57

To
Managing Director, BPC. Email: gemtshering@bpc.bt
Director, O&MD, DGPC. Email: director.umd@drukgreen.com
General Manager, TD, BPC. Email: ktobgye@bpc.bt
General Manager, DCSD, BPC. Email: sandeeprai@bpc.bt

Sub: **Load Generation Balance Report of Yesterday (22-Feb-2018).**

Hours (BST)	Forecast		Actual		Hours (BST)	Forecast		Actual	
	Generation	Load	Generation	Load		Generation	Load	Generation	Load
0:00	261.40	270.70	258.45	280.99	12:00	261.40	290.20	276.63	280.84
0:15	261.40	272.40	259.73	281.64	12:15	261.40	290.00	275.49	289.73
0:30	261.40	271.60	257.75	279.07	12:30	261.40	291.00	276.99	291.30
0:45	261.40	270.40	259.69	278.48	12:45	261.40	288.20	276.50	290.67
1:00	261.40	272.00	259.88	280.44	13:00	261.40	287.90	275.88	288.86
1:15	261.40	273.50	258.51	275.37	13:15	261.40	288.20	275.97	290.55
1:30	261.40	273.10	258.21	278.51	13:30	261.40	283.90	275.33	297.21
1:45	261.40	277.20	257.33	275.22	13:45	261.40	281.00	274.59	298.17
2:00	261.40	272.20	258.82	274.79	14:00	261.40	281.60	274.99	288.34
2:15	261.40	268.20	260.08	277.43	14:15	261.40	283.10	274.55	291.14
2:30	261.40	257.70	259.20	271.69	14:30	261.40	287.70	274.21	289.15
2:45	261.40	260.10	259.66	270.70	14:45	261.40	290.00	258.50	266.80
3:00	261.40	259.60	259.42	276.16	15:00	261.40	291.00	273.77	269.68
3:15	261.40	259.50	258.25	274.63	15:15	261.40	291.00	274.94	276.47
3:30	261.40	254.90	258.30	278.65	15:30	261.40	291.30	274.77	290.30
3:45	261.40	249.40	257.35	275.18	15:45	261.40	292.90	274.64	285.29
4:00	261.40	231.20	256.74	276.24	16:00	261.40	289.10	273.64	293.13
4:15	261.40	218.60	262.56	269.45	16:15	261.40	292.50	275.16	295.77
4:30	261.40	212.80	264.66	270.49	16:30	261.40	289.60	274.24	297.47
4:45	261.40	207.90	265.73	274.41	16:45	261.40	297.60	273.55	298.70
5:00	261.40	216.10	265.02	276.38	17:00	261.40	303.40	275.29	297.30
5:15	261.40	223.30	266.49	275.46	17:15	272.40	304.70	274.72	296.37
5:30	261.40	238.40	265.48	282.69	17:30	272.40	309.20	273.51	306.80
5:45	261.40	237.30	265.61	272.16	17:45	272.40	310.50	273.20	304.58
6:00	261.40	241.00	266.64	269.76	18:00	272.40	313.50	284.30	317.89
6:15	272.40	258.50	265.20	282.12	18:15	272.40	322.80	284.66	305.92
6:30	272.40	288.40	265.43	288.68	18:30	272.40	327.00	284.59	317.39
6:45	272.40	303.00	265.76	295.95	18:45	272.40	329.50	285.14	337.40
7:00	272.40	310.80	265.69	286.05	19:00	272.40	331.80	284.68	336.65
7:15	272.40	309.80	265.57	287.52	19:15	272.40	330.10	284.75	332.77
7:30	272.40	281.90	265.88	276.17	19:30	272.40	325.80	284.88	332.74
7:45	272.40	267.20	265.96	288.60	19:45	272.40	322.50	285.68	329.91
8:00	272.40	242.60	264.88	295.48	20:00	272.40	319.10	285.40	325.23
8:15	272.40	242.30	275.91	295.14	20:15	272.40	317.90	285.79	316.88
8:30	272.40	263.90	275.44	299.33	20:30	272.40	319.30	284.87	322.25
8:45	272.40	306.70	276.23	301.42	20:45	272.40	316.70	284.51	321.06
9:00	272.40	299.50	276.13	294.99	21:00	272.40	309.10	285.61	310.51
9:15	261.40	296.80	276.84	294.77	21:15	261.40	307.60	286.41	310.80
9:30	261.40	295.60	276.58	290.82	21:30	261.40	303.20	286.54	309.73
9:45	261.40	295.60	275.73	289.92	21:45	261.40	301.40	286.70	297.12
10:00	261.40	293.70	276.24	288.74	22:00	261.40	300.00	285.84	291.31
10:15	261.40	291.80	276.34	273.31	22:15	261.40	293.50	286.44	287.66
10:30	261.40	292.20	276.06	277.21	22:30	261.40	293.90	296.18	287.34
10:45	261.40	290.50	276.52	274.04	22:45	261.40	289.20	285.62	286.77
11:00	261.40	289.00	276.66	269.65	23:00	261.40	286.30	285.45	274.89
11:15	261.40	289.60	276.34	276.65	23:15	261.40	284.40	285.82	275.20
11:30	261.40	289.70	275.59	278.88	23:30	261.40	284.00	286.23	266.73
11:45	261.40	289.30	276.69	276.98	23:45	226.90	276.60	285.60	270.28

Yours faithfully
Jangchuk Selden

Coincidental peak load of Day(Last year):	
312.59MW	22-Feb-17
Maximum Load till date:	
362.09	14-Nov-17



འབྲུག་གློག་མེ་ལས་འཛིན།

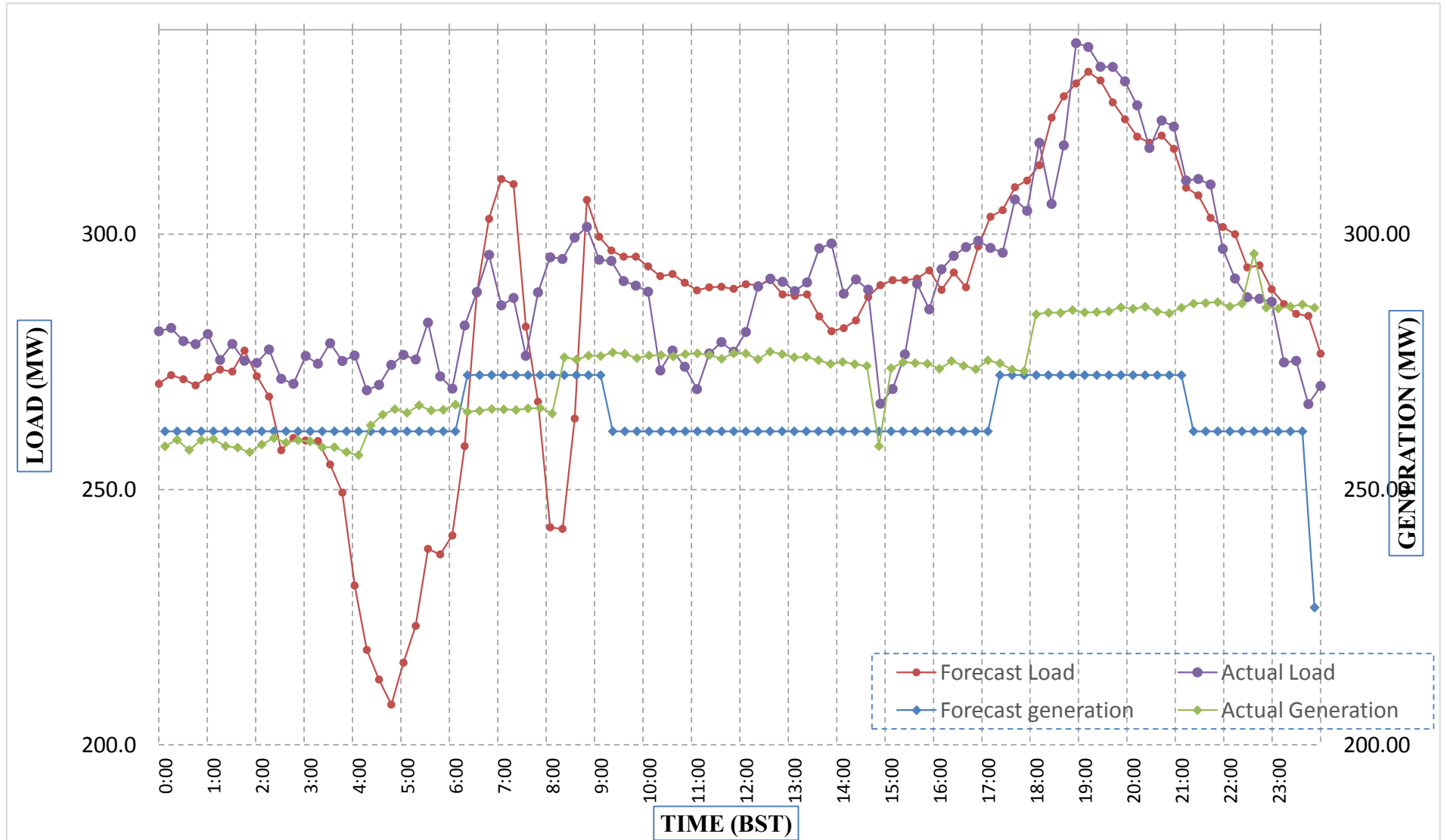
Bhutan Power Corporation Ltd.
 Bhutan Power System Operator
 Thimphu: Bhutan



Message No.: Enter your message number
 From: Shift In-charge, Control Room

Date: 23-Feb-18
 Time: 10:57

Forecast Generation & Load with Actual Generation & Load (22-Feb-2018).



Yours faithfully,
 Jangchuk Selden

	MW	Coincidental peak load of Day(Last year):	
Peak Co-incident Generation(22-Feb-2018).	296.18	312.59MW	22-Feb-17
Peak Co-incident Load(22-Feb-2018).	337.40		
		Maximum Load till date:	
		362.09	14-Nov-17

Telephone: +975-02335631; Fax: +975-02335632; Email: bhutansystemoperator@bpc.bt; www.bpc.bt



འབྲུག་གློག་ཚིལ་ལས་འཛིན།

Bhutan Power Corporation Ltd.
Bhutan Power System Operator
Thimphu: Bhutan



Message No.: Enter your message number
From: Shift In-charge, Control Room

Date: 23-Feb-18
Time: 10:57

To
Managing Director, BPC. Email: gemtshering@bpc.bt
Director, O&MD, DGPC. Email: director.omb@drukgreen.com
General Manager, TD, BPC. Email: thinleygyeltshen@bpc.bt
General Manager, DCSD, BPC. Email: sandeeprai@bpc.bt

Sub: Load Generation Balance Report of Today (23-Feb-2018).

Hours (BST)	Forecast		Actual	
	Generation	Load	Generation	Load
0:00	264.00	274.20	286.27	268.17
0:15	264.00	275.90	287.07	263.70
0:30	264.00	274.20	286.27	262.54
0:45	264.00	273.10	287.80	261.80
1:00	264.00	272.50	287.82	263.11
1:15	264.00	274.60	287.48	260.56
1:30	264.00	274.30	286.61	263.92
1:45	264.00	277.20	286.50	252.16
2:00	264.00	274.10	286.95	251.00
2:15	264.00	269.50	287.16	253.34
2:30	264.00	261.50	286.38	242.82
2:45	264.00	263.60	287.97	241.73
3:00	264.00	263.60	287.09	242.52
3:15	264.00	265.50	287.00	248.94
3:30	264.00	263.30	286.09	256.59
3:45	264.00	260.80	288.12	249.95
4:00	264.00	253.40	287.99	251.93
4:15	263.00	230.80	288.71	254.95
4:30	263.00	223.00	289.73	252.93
4:45	263.00	219.20	289.91	253.62
5:00	263.00	228.10	289.52	258.97
5:15	264.00	233.60	288.41	257.63
5:30	264.00	240.30	288.24	264.85
5:45	264.00	248.30	288.65	266.61
6:00	264.00	251.40	288.40	270.92
6:15	274.90	264.90	288.14	267.04
6:30	274.90	289.30	299.97	280.28
6:45	274.90	302.20	296.53	286.11
7:00	274.90	310.40	298.29	291.27
7:15	273.10	309.90	297.63	291.86
7:30	273.10	288.40	297.55	299.23
7:45	273.10	278.30	298.41	299.17
8:00	273.10	260.20	297.29	299.49
8:15	274.90	259.40	298.57	305.25
8:30	274.90	277.60	299.12	308.37
8:45	274.90	308.30	298.97	310.11
9:00	274.90	301.70	297.50	310.41

Yours faithfully,
Jangchuk Selden

Coincidental peak load of Day(Last year):	
295.9	23-Feb-17

Maximum Load till date:	
362.09	14-Nov-17

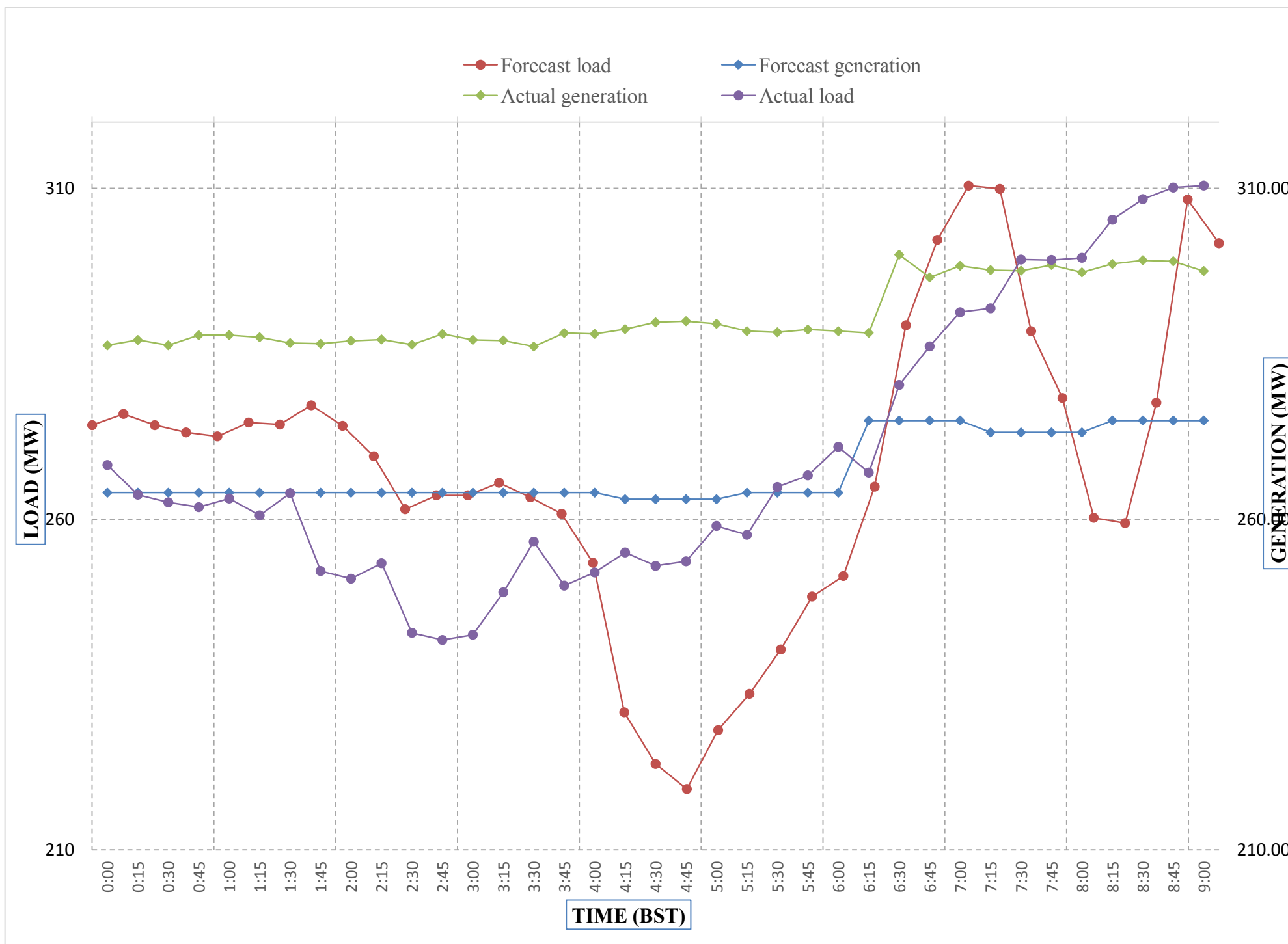
Telephone: +975-02335631; Fax: +975-02335632; Email: bhutansystemoperator@bpc.bt; www.bpc.bt



Message No.: Enter your message number
 From: Shift In-charge, Control Room

Date: 23-Feb-18
 Time: 10:57

Forecast Generation & Load with Actual Generation & Load of Today from 00:00hrs to 09:00hrs(23-Feb-2018).



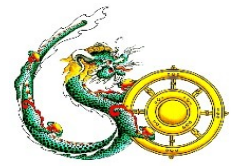
Yours faithfully
 Jangchuk Selden

Coincidental peak load of Day(Last)	
272.75	23-Feb-17

Maximum Load till date:	
284.65625	31-Oct-00



འབྲུག་གྲོག་མོ་ལས་འཛིན།
Bhutan Power Corporation Ltd.
Bhutan Power System Operator
Thimphu: Bhutan



Message No.: Enter your message number **Date:** 23-Feb-18
From: Shift In-charge, Control Room **Time:** 10:57

To

Managing Director, BPC. Email: gemtshering@bpc.bt
 Director, O&MD, DGPC. Email: director.umd@drukgreen.com
 General Manager, TD, BPC. Email: ktobgye@bpc.bt
 Advisor, BPC. Email: bharattamang@bpc.bt

Sub: **Load Generation Balance Report of Tomorrow (24-Feb-2018).**

Hours (BST)	Forecast		Hours (BST)	Forecast	
	Generation	Load		Generation	Load
0:00	280.40	276.20	12:00	280.40	289.50
0:15	280.40	277.10	12:15	280.40	291.40
0:30	280.40	275.70	12:30	280.40	294.00
0:45	280.40	274.30	12:45	280.40	290.50
1:00	280.40	274.70	13:00	280.40	289.70
1:15	280.40	275.00	13:15	280.40	292.30
1:30	280.40	276.40	13:30	280.40	291.40
1:45	280.40	277.70	13:45	280.40	288.20
2:00	280.40	274.90	14:00	280.40	285.30
2:15	280.40	272.40	14:15	280.40	287.20
2:30	280.40	264.20	14:30	280.40	288.30
2:45	280.40	266.70	14:45	280.40	285.80
3:00	280.40	268.30	15:00	280.40	286.70
3:15	280.40	268.70	15:15	280.40	289.40
3:30	280.40	269.10	15:30	280.40	293.40
3:45	280.40	269.00	15:45	280.40	293.90
4:00	280.40	270.40	16:00	280.40	292.10
4:15	280.40	268.40	16:15	280.40	295.40
4:30	280.40	269.10	16:30	280.40	294.00
4:45	280.40	266.20	16:45	280.40	297.60
5:00	280.40	272.10	17:00	294.20	300.30
5:15	280.40	271.90	17:15	294.20	303.80
5:30	280.40	258.00	17:30	294.20	307.50
6:45	280.40	251.00	17:45	294.20	308.50
6:00	294.20	240.10	18:00	294.20	316.40

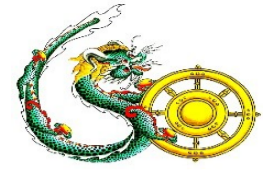
6:15	294.20	233.50	18:15	294.20	319.60
6:30	294.20	238.40	18:30	294.20	325.60
6:45	294.20	242.30	18:45	294.20	331.40
7:00	294.20	244.20	19:00	294.20	332.60
7:15	294.20	245.20	19:15	294.20	331.20
7:30	294.20	238.30	19:30	294.20	328.00
7:45	294.20	256.90	19:45	294.20	322.40
8:00	294.20	289.20	20:00	294.20	320.90
8:15	294.20	310.00	20:15	294.20	319.00
8:30	294.20	308.90	20:30	294.20	317.60
8:45	294.20	307.40	20:45	294.20	316.60
9:00	280.40	299.30	21:00	280.40	309.30
9:15	280.40	297.90	21:15	280.40	309.10
9:30	280.40	297.50	21:30	280.40	307.00
9:45	280.40	296.00	21:45	280.40	301.80
10:00	280.40	293.90	22:00	280.40	298.50
10:15	280.40	288.50	22:15	280.40	293.20
10:30	280.40	291.10	22:30	280.40	293.70
10:45	280.40	288.90	22:45	280.40	289.30
11:00	280.40	286.80	23:00	280.40	284.20
11:15	280.40	288.30	23:15	280.40	283.50
11:30	280.40	286.50	23:30	280.40	280.90
11:45	280.40	289.00	23:45	280.40	278.00

Yours faithfully,
Jangchuk Selden



འབྲུག་གྲོག་མེ་ལས་འཛིན།

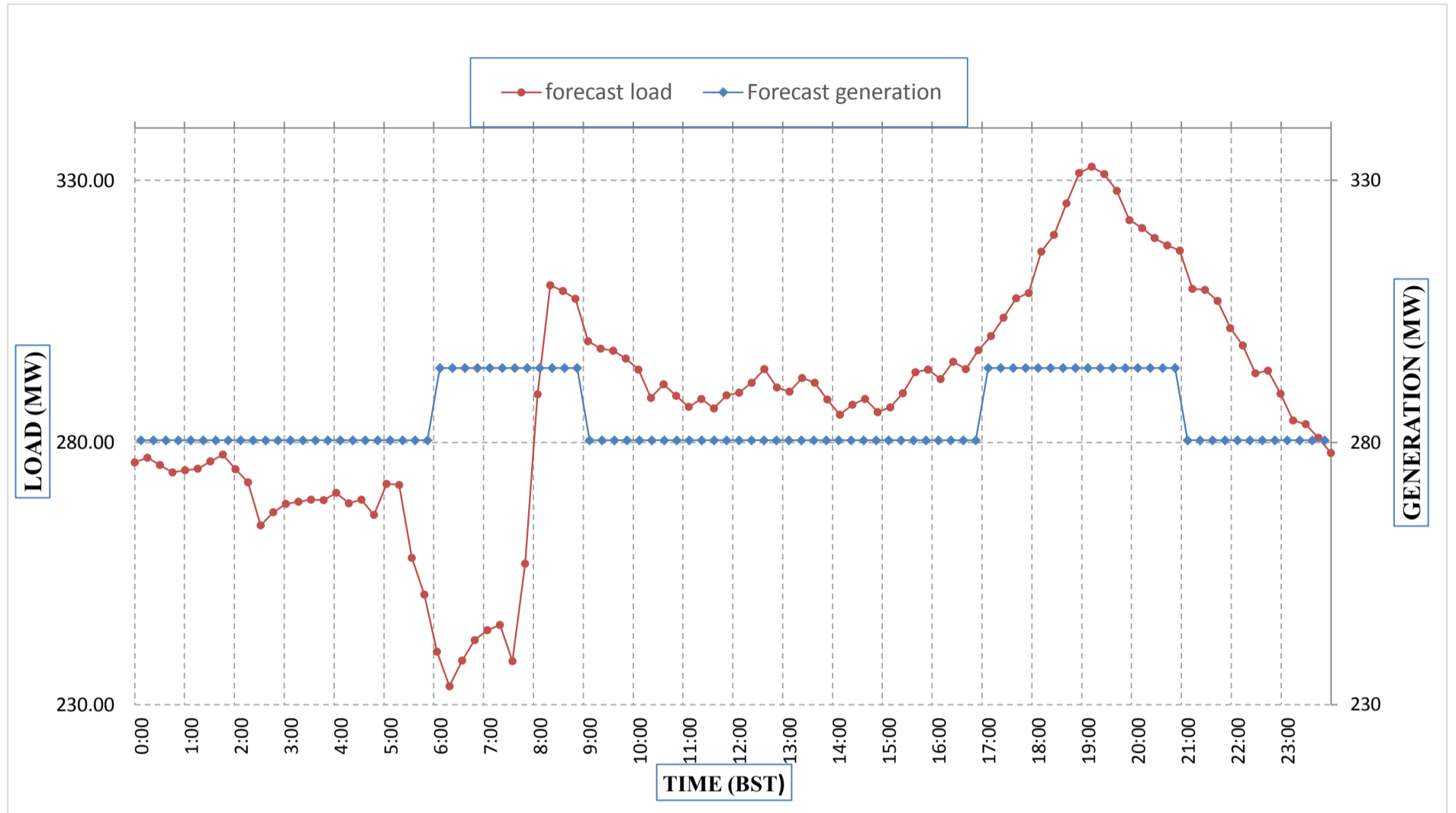
Bhutan Power Corporation Ltd.
Bhutan Power System Operator
Thimphu: Bhutan



Message No.: Enter your message number
From: Shift In-charge, Control Room

Date: 23-Feb-18
Time: 11:13

Forecast Generation & Load Forecast for Tomorrow (24-Feb-2018).



Yours faithfully,
Jangchuk Selden

	MW
Scheduled Peak Generation(24-Feb-2018).	294.20
Forecast Peak Load(24-Feb-2018).	332.60



ཕྱག་ལུགས་ལེ་ལས་འདི་ན།



Bhutan Power Corporation Ltd.
Bhutan Power System Operator
Thimphu: Bhutan

Message No.: Enter your message number **Date:** 23-Feb-18
From: Shift In-charge, Control Room **Time:** 10:57

To
 Managing Director, BPC. Email: gemtshering@bpc.bt
 Director, O&MD, DGPC. Email: director.omb@drukgreen.com
 General Manager, TD, BPC. Email: ktobgye@bpc.bt
 Advisor, BPC. Email: bharattamang@bpc.bt

Sub: Forecast Generation and Actual Generation of Dagachhu (22-Feb-2018).

Hours (BST)	Actual Frequency	Forecast Generation	Actual Generation	Hours (BST)	Actual Frequency	Forecast Generation	Actual Generation
0:00	49.95	17.80	17.70	12:00	49.97	17.80	17.81
0:15	49.99	17.80	17.68	12:15	49.97	17.80	17.84
0:30	49.98	17.80	17.68	12:30	49.96	17.80	17.82
0:45	49.99	17.80	17.68	12:45	50.01	17.80	17.84
1:00	49.98	17.80	17.68	13:00	50.06	17.80	17.83
1:15	49.94	17.80	17.68	13:15	50.00	17.80	17.80
1:30	49.96	17.80	17.68	13:30	49.98	17.80	17.84
1:45	49.95	17.80	17.67	13:45	49.99	17.80	17.79
2:00	49.92	17.80	17.68	14:00	49.93	17.80	17.84
2:15	49.91	17.80	17.71	14:15	49.91	17.80	17.81
2:30	49.95	17.80	17.69	14:30	49.92	17.80	17.82
2:45	49.87	17.80	17.67	14:45	49.96	17.80	17.98
3:00	49.93	17.80	17.68	15:00	49.91	17.80	18.51
3:15	49.95	17.80	17.65	15:15	49.85	17.80	18.50
3:30	49.98	17.80	17.69	15:30	49.93	17.80	18.48
3:45	50.04	17.80	17.68	15:45	49.97	17.80	18.49
4:00	49.99	17.80	17.66	16:00	50.02	17.80	18.48
4:15	50.00	17.80	17.68	16:15	49.94	17.80	18.50
4:30	49.96	17.80	17.64	16:30	49.96	17.80	18.20
4:45	49.98	17.80	17.71	16:45	50.03	17.80	18.19
5:00	49.93	17.80	17.68	17:00	50.04	17.80	18.21
5:15	49.97	17.80	17.67	17:15	49.98	17.80	18.19
5:30	49.94	17.80	17.69	17:30	49.98	17.80	18.21
6:45	49.99	17.80	17.67	17:45	50.00	17.80	17.73
6:00	49.97	17.80	17.68	18:00	50.02	17.80	18.02
6:15	49.89	17.80	17.68	18:15	50.00	17.80	18.04
6:30	49.83	17.80	17.67	18:30	49.97	17.80	18.03
6:45	49.82	17.80	17.72	18:45	49.94	17.80	18.03
7:00	49.92	17.80	17.72	19:00	50.00	17.80	18.00
7:15	49.95	17.80	17.66	19:15	49.98	17.80	18.03
7:30	49.99	17.80	17.70	19:30	50.01	17.80	18.01
7:45	49.95	17.80	17.67	19:45	50.01	17.80	18.02
8:00	49.95	17.80	17.69	20:00	50.02	17.80	18.01
8:15	49.92	17.80	17.68	20:15	50.00	17.80	18.01
8:30	49.96	17.80	17.88	20:30	50.00	17.80	18.01
8:45	50.00	17.80	17.87	20:45	49.99	17.80	18.02
9:00	49.92	17.80	17.88	21:00	49.95	17.80	18.16
9:15	49.89	17.80	17.88	21:15	49.98	17.80	18.72
9:30	49.97	17.80	17.87	21:30	49.97	17.80	18.72
9:45	49.96	17.80	17.85	21:45	50.00	17.80	18.70
10:00	49.92	17.80	17.84	22:00	49.94	17.80	18.72

10:15	49.93	17.80	17.86	22:15	49.96	17.80	18.21
10:30	49.94	17.80	17.83	22:30	49.98	17.80	18.19
10:45	49.96	17.80	17.84	22:45	49.96	17.80	18.20
11:00	49.83	17.80	17.81	23:00	50.00	17.80	18.18
11:15	49.89	17.80	17.83	23:15	50.01	17.80	18.89
11:30	49.84	17.80	17.84	23:30	50.00	17.80	18.89
11:45	49.91	17.80	17.84	23:45	49.99	17.80	19.50

Yours faithfully,
Jangchuk Selden



འབྲུག་གྲོག་མེ་ལས་འཛིན།

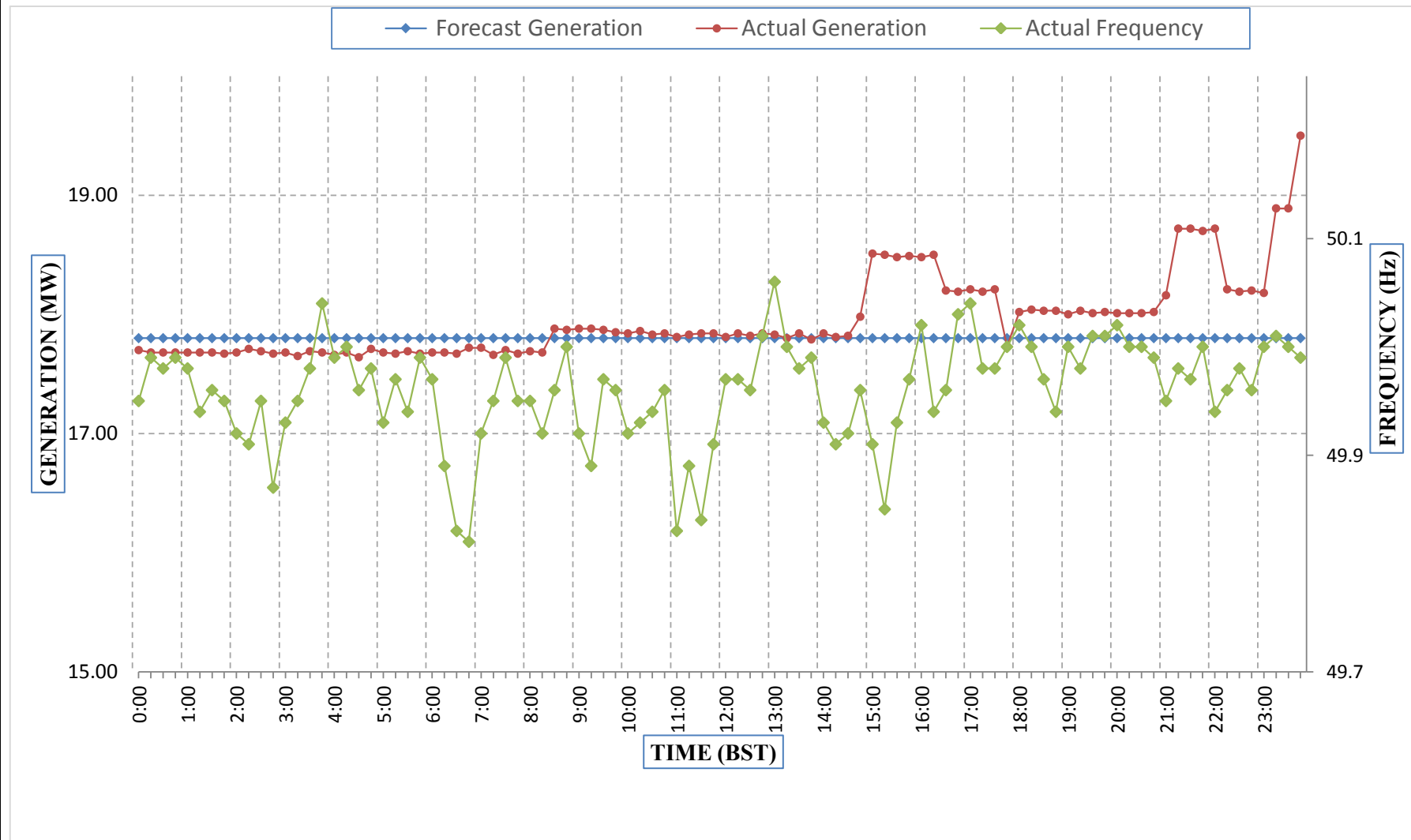
Bhutan Power Corporation Ltd.
Bhutan Power System Operator
Thimphu: Bhutan



Message No.: Enter your message number
From: Shift In-charge, Control Room

Date: 23-Feb-18
Time: 10:57

Forecast Generation & Actual Generation of Dagachhu(22-Feb-2018).



Yours faithfully,
Jangchuk Selden