



འབྲུག་ཤོག་མེ་ལམ་འཛིན།

Bhutan Power Corporation Ltd.
Bhutan Power System Operator
Thimphu: Bhutan



Message No.: Enter your message number
From: Shift In-charge, Control Room

Date: 22-Feb-18
Time: 9:20

To
Managing Director, BPC. Email: gemtshering@bpc.bt
Director, O&MD, DGPC. Email: director.umd@drukgreen.com
General Manager, TD, BPC. Email: ktobgye@bpc.bt
General Manager, DCSD, BPC. Email: sandeeprai@bpc.bt

Sub: **Load Generation Balance Report of Yesterday (21-Feb-2018).**

Hours (BST)	Forecast		Actual		Hours (BST)	Forecast		Actual	
	Generation	Load	Generation	Load		Generation	Load	Generation	Load
0:00	248.10	272.60	265.63	283.14	12:00	259.30	283.80	257.60	294.05
0:15	250.20	274.70	264.60	284.40	12:15	263.70	288.20	257.74	302.30
0:30	248.80	273.30	264.62	280.38	12:30	265.40	289.90	257.62	304.00
0:45	247.50	272.00	265.00	281.21	12:45	261.60	286.10	257.34	299.65
1:00	249.10	273.60	262.98	272.45	13:00	260.70	285.20	258.91	297.98
1:15	250.80	275.30	263.63	275.97	13:15	259.80	284.30	257.51	302.39
1:30	249.50	274.00	263.31	275.84	13:30	255.90	280.40	258.22	303.70
1:45	251.10	275.60	284.24	277.26	13:45	253.50	278.00	258.60	300.23
2:00	246.80	271.30	283.41	278.97	14:00	253.70	278.20	257.08	296.03
2:15	241.90	266.40	283.15	269.83	14:15	257.10	281.60	257.89	288.73
2:30	235.50	260.00	284.35	273.30	14:30	260.40	284.90	257.87	299.34
2:45	236.80	261.30	282.87	273.17	14:45	263.50	288.00	257.45	298.34
3:00	237.90	262.40	284.39	274.49	15:00	263.50	288.00	257.95	297.22
3:15	231.40	255.90	285.52	278.14	15:15	265.60	290.10	259.06	299.29
3:30	234.10	252.60	282.89	276.62	15:30	265.60	290.10	257.02	303.82
3:45	216.60	235.10	284.98	273.62	15:45	267.70	292.20	256.95	303.84
4:00	203.10	215.60	284.81	277.86	16:00	268.40	292.90	257.24	303.97
4:15	198.10	210.60	284.58	272.77	16:15	269.30	295.20	258.41	303.73
4:30	203.20	215.70	283.06	276.13	16:30	269.90	294.60	257.56	300.34
4:45	208.80	221.30	284.34	277.13	16:45	269.90	299.30	258.95	297.09
5:00	226.60	245.10	283.55	276.45	17:00	279.10	303.60	256.94	294.23
5:15	244.80	263.30	284.11	279.72	17:15	279.10	305.50	258.45	301.86
5:30	257.50	276.00	283.38	283.12	17:30	282.80	307.60	258.29	306.70
5:45	252.00	276.50	284.02	284.20	17:45	283.50	309.70	258.25	307.59
6:00	255.40	279.90	282.23	283.41	18:00	283.50	314.70	258.42	319.94
6:15	260.20	284.70	282.84	285.34	18:15	283.50	321.30	256.81	321.66
6:30	276.80	301.30	283.44	281.73	18:30	283.50	326.80	257.80	329.47
6:45	289.30	313.80	283.13	293.87	18:45	283.60	329.20	257.64	333.21
7:00	300.90	325.40	282.96	298.59	19:00	283.60	330.50	258.22	334.75
7:15	298.60	323.10	282.16	307.49	19:15	283.50	330.80	257.66	330.59
7:30	298.30	322.80	282.16	308.90	19:30	283.50	324.70	258.27	331.64
7:45	290.80	315.30	282.42	312.21	19:45	283.60	320.90	258.27	323.47
8:00	266.40	290.90	282.15	314.98	20:00	283.60	317.20	258.41	320.97
8:15	233.90	258.40	279.48	313.92	20:15	283.60	316.20	257.41	313.07
8:30	208.20	232.70	279.48	315.40	20:30	283.60	317.40	257.79	319.23
8:45	267.20	291.70	268.52	314.27	20:45	283.50	313.80	258.40	311.26
9:00	275.20	299.70	268.45	311.42	21:00	283.50	311.80	257.47	311.87
9:15	272.70	297.20	268.44	308.22	21:15	281.50	306.00	256.94	305.88
9:30	269.20	293.70	268.09	305.93	21:30	279.60	304.10	257.40	315.55
9:45	268.70	293.20	269.37	307.27	21:45	276.30	300.80	258.24	313.64
10:00	265.10	289.60	267.38	308.01	22:00	265.70	299.20	258.62	301.65
10:15	262.80	287.30	268.73	304.24	22:15	265.70	293.70	258.48	296.66
10:30	263.50	288.00	269.05	308.42	22:30	265.70	293.40	259.35	293.02
10:45	260.70	285.20	269.07	306.41	22:45	264.50	289.00	257.22	286.25
11:00	260.10	284.60	268.96	307.18	23:00	261.00	285.50	258.20	281.75
11:15	260.00	284.50	258.25	305.13	23:15	258.00	283.90	258.16	285.38
11:30	258.50	283.00	258.29	282.00	23:30	257.60	282.10	257.90	282.35
11:45	260.40	284.90	258.36	296.15	23:45	226.90	276.60	258.97	278.08

Yours faithfully
Karma Yangden

Coincidental peak load of Day(Last year):	
291.03MW	21-Feb-17
Maximum Load till date:	
362.09	14-Nov-17



འབྲུག་གློག་ལེ་ལས་འཛིན།

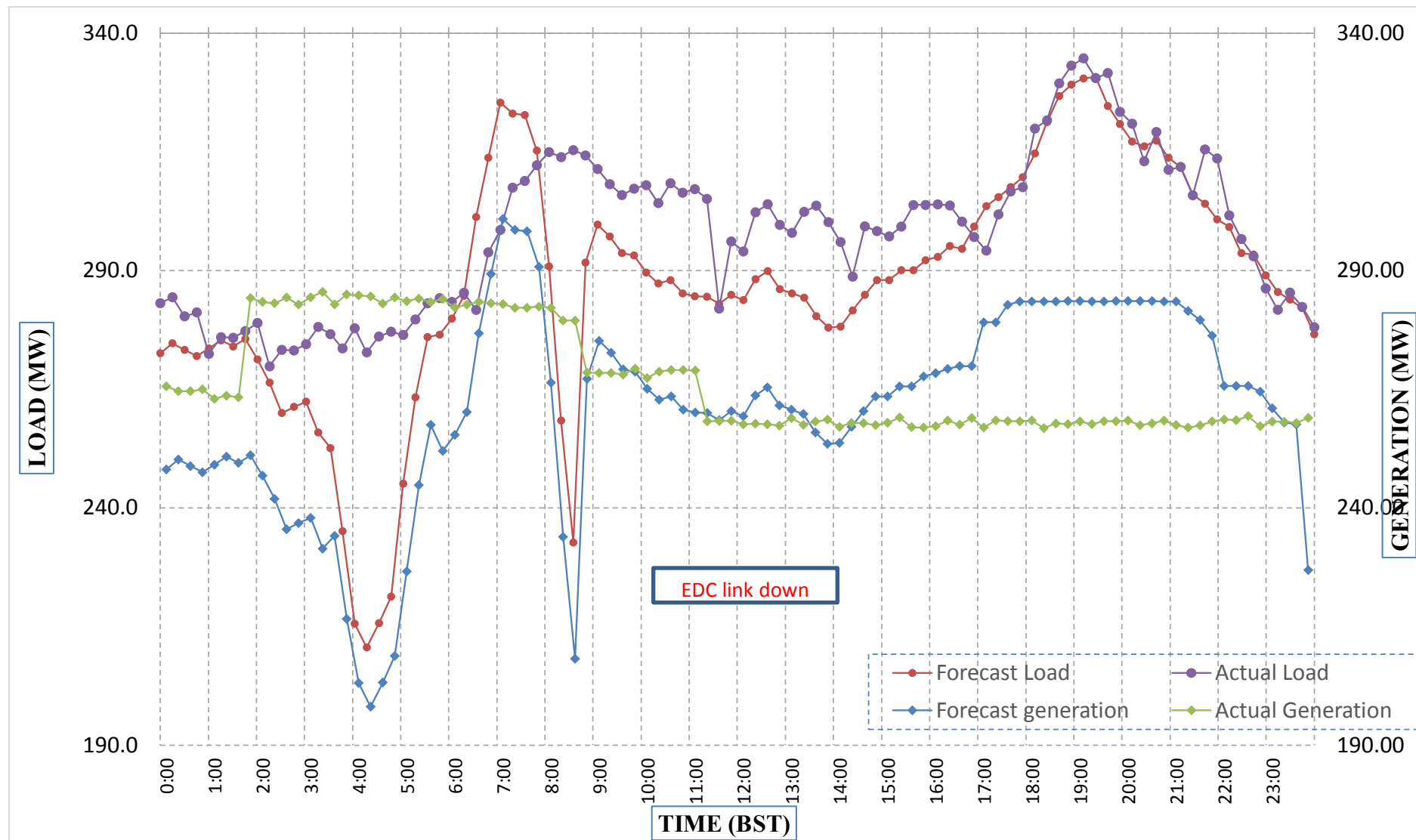
Bhutan Power Corporation Ltd.
 Bhutan Power System Operator
 Thimphu: Bhutan



Message No.: Enter your message number
 From: Shift In-charge, Control Room

Date: 22-Feb-18
 Time: 9:20

Forecast Generation & Load with Actual Generation & Load (21-Feb-2018).



Yours faithfully,
 Karma Yangden

	MW	Coincidental peak load of Day(Last year):	
Peak Co-incident Generation(21-Feb-2018).	285.52	291.03MW	21-Feb-17
Peak Co-incident Load(21-Feb-2018).	334.75		
		Maximum Load till date:	
		362.09	14-Nov-17

Telephone: +975-02335631; Fax: +975-02335632; Email: bhutansystemoperator@bpc.bt; www.bpc.bt



འབྲུག་གློག་ལེ་ལས་འཛིན།

Bhutan Power Corporation Ltd.
Bhutan Power System Operator
Thimphu: Bhutan



Message No.: Enter your message number
From: Shift In-charge, Control Room

Date: 22-Feb-18
Time: 9:20

To
Managing Director, BPC. Email: gemtshering@bpc.bt
Director, O&MD, DGPC. Email: director.umd@drukgreen.com
General Manager, TD, BPC. Email: thinleygyeltshen@bpc.bt
General Manager, DCSD, BPC. Email: sandeeprai@bpc.bt

Sub: Load Generation Balance Report of Today (22-Feb-2018).

Hours (BST)	Forecast		Actual	
	Generation	Load	Generation	Load
0:00	261.40	270.70	258.45	280.99
0:15	261.40	272.40	259.73	281.64
0:30	261.40	271.60	257.75	279.07
0:45	261.40	270.40	259.69	278.48
1:00	261.40	272.00	259.88	280.44
1:15	261.40	273.50	258.51	275.37
1:30	261.40	273.10	258.21	278.51
1:45	261.40	277.20	257.33	275.22
2:00	261.40	272.20	258.82	274.79
2:15	261.40	268.20	260.08	277.43
2:30	261.40	257.70	259.20	271.69
2:45	261.40	260.10	259.66	270.70
3:00	261.40	259.60	259.42	276.16
3:15	261.40	259.50	258.25	274.63
3:30	261.40	254.90	258.30	278.65
3:45	261.40	249.40	257.35	275.18
4:00	261.40	231.20	256.74	276.24
4:15	261.40	218.60	262.56	269.45
4:30	261.40	212.80	264.66	270.49
4:45	261.40	207.90	265.73	274.41
5:00	261.40	216.10	265.02	276.38
5:15	261.40	223.30	266.49	275.46
5:30	261.40	238.40	265.48	282.69
5:45	261.40	237.30	265.61	272.16
6:00	261.40	241.00	266.64	269.76
6:15	272.40	258.50	265.20	282.12
6:30	272.40	288.40	265.43	288.68
6:45	272.40	303.00	265.76	295.95
7:00	272.40	310.80	265.69	286.05
7:15	272.40	309.80	265.57	287.52
7:30	272.40	281.90	265.88	276.17
7:45	272.40	267.20	265.96	288.60
8:00	272.40	242.60	264.88	295.48
8:15	272.40	242.30	275.91	295.14
8:30	272.40	263.90	275.44	299.33
8:45	272.40	306.70	276.23	301.42
9:00	272.40	299.50	276.13	294.99

Yours faithfully,
Karma Yangden

Coincidental peak load of Day(Last year):	
299.71	22-Feb-17

Maximum Load till date:	
362.09	14-Nov-17



འབྲུག་གྲོག་ཚེ་ལས་འཛིན།

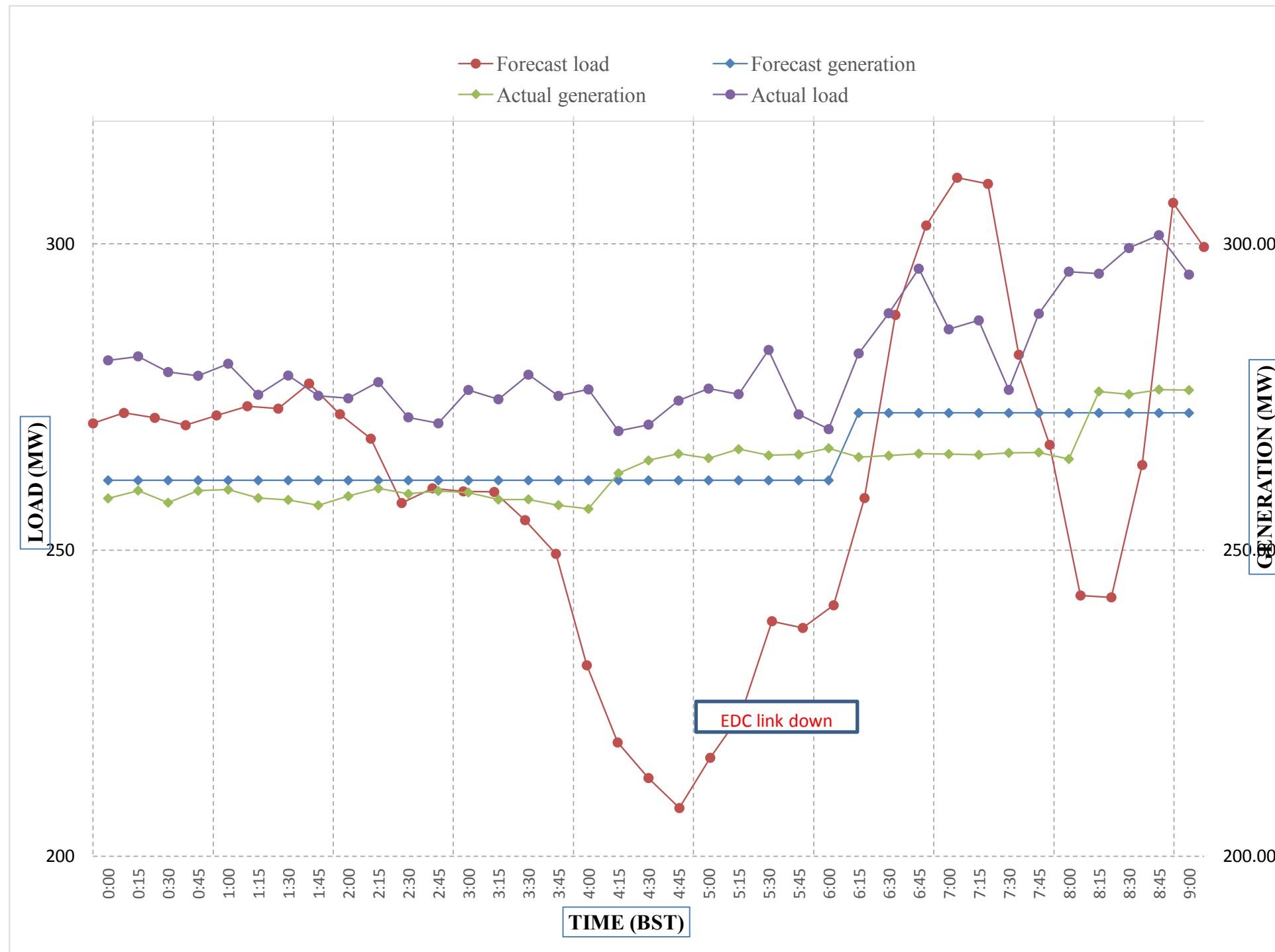
Bhutan Power Corporation Ltd.
 Bhutan Power System Operator
 Thimphu: Bhutan



Message No.: Enter your message number
 From: Shift In-charge, Control Room

Date: 22-Feb-18
 Time: 9:20

Forecast Generation & Load with Actual Generation & Load of Today from 00:00hrs to 09:00hrs(22-Feb-2018).

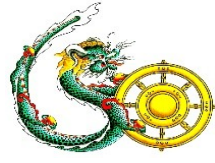


Yours faithfully
 Karma Yangden

Coincidental peak load of Day>Last	
272.75	22-Feb-17
Maximum Load till date:	
256.8125	16-Nov-00



འབྲུག་གྲོག་ལེན་ལྷན་ཁག།
Bhutan Power Corporation Ltd.
Bhutan Power System Operator
 Thimphu: Bhutan



Message No.: Enter your message number **Date:** 22-Feb-18
From: Shift In-charge, Control Room **Time:** 9:20

To
 Managing Director, BPC. Email: gemtshering@bpc.bt
 Director, O&MD, DGPC. Email: director.omid@drukgreen.com
 General Manager, TD, BPC. Email: ktobgye@bpc.bt
 Advisor, BPC. Email: bharattamang@bpc.bt

Sub: Load Generation Balance Report of Tomorrow (23-Feb-2018).

Hours (BST)	Forecast		Hours (BST)	Forecast	
	Generation	Load		Generation	Load
0:00	264.00	274.20	12:00	263.00	292.30
0:15	264.00	275.90	12:15	265.00	293.10
0:30	264.00	274.20	12:30	265.00	295.10
0:45	264.00	273.10	12:45	265.00	292.50
1:00	264.00	272.50	13:00	265.00	290.80
1:15	264.00	274.60	13:15	266.00	292.40
1:30	264.00	274.30	13:30	266.00	289.30
1:45	264.00	277.20	13:45	266.00	285.70
2:00	264.00	274.10	14:00	266.00	285.50
2:15	264.00	269.50	14:15	263.00	287.00
2:30	264.00	261.50	14:30	263.00	290.60
2:45	264.00	263.60	14:45	263.00	292.00
3:00	264.00	263.60	15:00	263.00	293.10
3:15	264.00	265.50	15:15	265.00	293.70
3:30	264.00	263.30	15:30	265.00	294.90
3:45	264.00	260.80	15:45	265.00	295.90
4:00	264.00	253.40	16:00	265.00	293.40
4:15	263.00	230.80	16:15	266.00	296.00
4:30	263.00	223.00	16:30	266.00	292.90
4:45	263.00	219.20	16:45	266.00	298.20
5:00	263.00	228.10	17:00	266.00	301.70
5:15	264.00	233.60	17:15	276.00	305.70
5:30	264.00	240.30	17:30	276.00	309.60
6:45	264.00	248.30	17:45	276.00	310.60
6:00	264.00	251.40	18:00	276.00	315.80
6:15	274.90	264.90	18:15	274.90	323.90
6:30	274.90	289.30	18:30	274.90	328.30
6:45	274.90	302.20	18:45	274.90	329.70
7:00	274.90	310.40	19:00	274.90	332.50
7:15	273.10	309.90	19:15	274.90	330.80
7:30	273.10	288.40	19:30	274.90	327.60
7:45	273.10	278.30	19:45	274.90	323.20
8:00	273.10	260.20	20:00	274.90	319.90
8:15	274.90	259.40	20:15	276.00	318.90
8:30	274.90	277.60	20:30	276.00	318.70
8:45	274.90	308.30	20:45	276.00	316.00
9:00	274.90	301.70	21:00	276.00	309.70
9:15	265.00	299.10	21:15	265.00	308.40
9:30	265.00	299.50	21:30	265.00	306.10
9:45	265.00	299.30	21:45	265.00	304.20
10:00	265.00	296.70	22:00	265.00	300.80
10:15	265.00	294.40	22:15	263.00	294.50
10:30	265.00	296.30	22:30	263.00	294.00
10:45	265.00	295.50	22:45	263.00	289.50
11:00	265.00	293.10	23:00	263.00	286.00
11:15	263.00	293.50	23:15	263.00	284.90
11:30	263.00	289.90	23:30	263.00	283.70
11:45	263.00	292.30	23:45	263.00	280.50

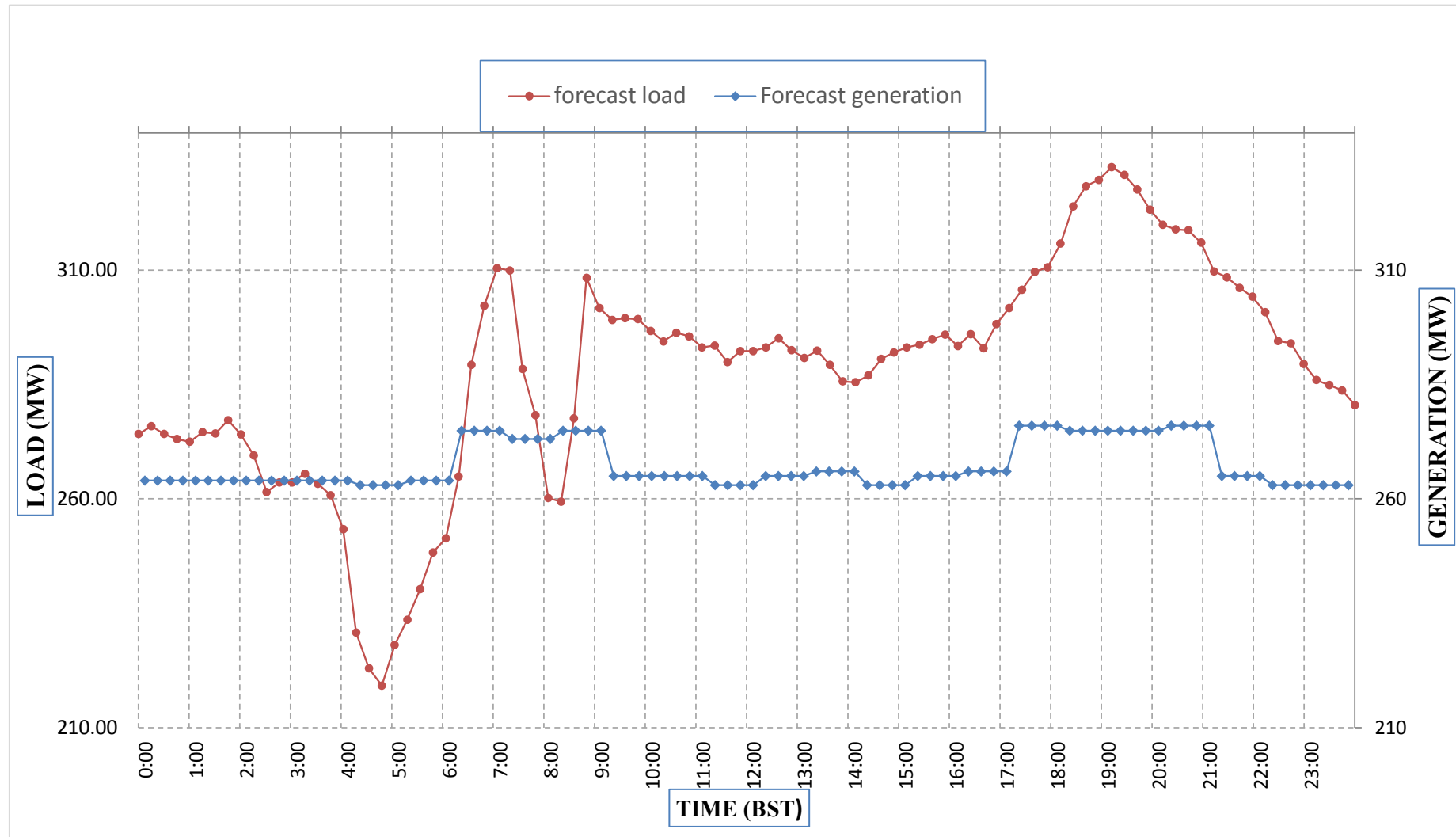
Yours faithfully,
 Karma Yangden



Message No.: Enter your message number
 From: Shift In-charge, Control Room

Date: 22-Feb-18
 Time: 10:30

Forecast Generation & Load Forecast for Tomorrow (23-Feb-2018).



Yours faithfully,
 Karma Yangden

	MW
Scheduled Peak Generation(23-Feb-2018).	276.00
Forecast Peak Load(23-Feb-2018).	332.50



ཕྱག་ལུགས་ལྷན་ཁག་གི་འཕེལ་རྒྱུ་ལྷན་ཁག་།

Bhutan Power Corporation Ltd.
Bhutan Power System Operator
Thimphu: Bhutan



Message No.: Enter your message number **Date:** 22-Feb-18
From: Shift In-charge, Control Room **Time:** 9:20

To
Managing Director, BPC. Email: gemtshering@bpc.bt
Director, O&MD, DGPC. Email: director.umd@drukgreen.com
General Manager, TD, BPC. Email: ktobgye@bpc.bt
Advisor, BPC. Email: bharattamang@bpc.bt

Sub: Forecast Generation and Actual Generation of Dagachhu (21-Feb-2018).

Hours (BST)	Actual Frequency	Forecast Generation	Actual Generation	Hours (BST)	Actual Frequency	Forecast Generation	Actual Generation
0:00	49.99	17.50	17.99	12:00	49.95	17.50	17.98
0:15	49.99	17.50	17.99	12:15	49.96	17.50	18.19
0:30	49.95	17.50	17.96	12:30	50.01	17.50	18.18
0:45	49.97	17.50	18.00	12:45	49.99	17.50	18.21
1:00	49.94	17.50	17.98	13:00	50.04	17.50	18.22
1:15	49.97	17.50	17.99	13:15	49.98	17.50	18.19
1:30	49.97	17.50	17.96	13:30	50.01	17.50	18.15
1:45	49.90	17.50	18.01	13:45	50.02	17.50	17.69
2:00	49.96	17.50	18.01	14:00	49.96	17.50	17.69
2:15	49.91	17.50	18.00	14:15	49.92	17.50	17.76
2:30	49.97	17.50	17.98	14:30	49.93	17.50	17.87
2:45	49.98	17.50	17.99	14:45	49.89	17.50	17.88
3:00	49.99	17.50	18.02	15:00	50.00	17.50	17.86
3:15	50.00	17.50	18.01	15:15	49.96	17.50	17.87
3:30	49.98	17.50	18.02	15:30	49.97	17.50	17.87
3:45	50.00	17.50	18.01	15:45	49.96	17.50	17.90
4:00	49.94	17.50	18.00	16:00	49.95	17.50	17.88
4:15	49.96	17.50	18.02	16:15	49.91	17.50	17.89
4:30	49.95	17.50	18.00	16:30	49.92	17.50	17.88
4:45	49.96	17.50	17.66	16:45	49.93	17.50	17.88
5:00	49.95	17.50	17.67	17:00	49.91	17.50	17.91
5:15	49.93	17.50	17.68	17:15	49.91	17.50	17.88
5:30	49.94	17.50	17.68	17:30	49.96	17.50	17.90
6:45	49.97	17.50	17.64	17:45	50.02	17.50	17.90
6:00	49.93	17.50	17.65	18:00	49.98	17.50	17.87
6:15	49.96	17.50	17.69	18:15	50.01	17.50	17.87
6:30	49.80	17.50	17.69	18:30	49.90	17.50	17.88
6:45	49.91	17.50	17.67	18:45	49.93	17.50	17.69
7:00	49.89	17.50	17.69	19:00	49.93	17.50	17.69
7:15	49.96	17.50	17.68	19:15	49.91	17.50	17.69
7:30	49.96	17.50	17.69	19:30	50.00	17.50	17.70
7:45	50.04	17.50	17.68	19:45	49.98	17.50	17.68
8:00	50.00	17.50	17.69	20:00	49.99	17.50	17.70
8:15	49.99	17.50	17.69	20:15	49.91	17.50	17.66
8:30	49.99	17.50	17.67	20:30	49.95	17.50	17.67
8:45	49.98	17.50	17.68	20:45	49.97	17.50	17.71
9:00	49.87	17.50	17.69	21:00	49.94	17.50	17.69
9:15	49.98	17.50	17.67	21:15	50.02	17.50	17.69
9:30	49.97	17.50	17.67	21:30	49.99	17.50	17.68
9:45	49.96	17.50	17.66	21:45	50.05	17.50	17.69
10:00	49.98	17.50	17.67	22:00	49.93	17.50	17.69
10:15	49.98	17.50	17.70	22:15	49.92	17.50	17.66
10:30	49.94	17.50	17.68	22:30	49.93	17.50	17.67
10:45	49.99	17.50	18.03	22:45	49.94	17.50	17.71
11:00	49.94	17.50	18.00	23:00	49.98	17.50	17.68
11:15	49.97	17.50	18.02	23:15	49.96	17.50	17.69
11:30	49.95	17.50	18.01	23:30	50.00	17.50	17.67
11:45	50.00	17.50	18.03	23:45	49.99	17.50	17.67

Yours faithfully,
Karma Yangden



ཕན། འདུག་སྒྲོག་མེ་ལས་འཛིན།

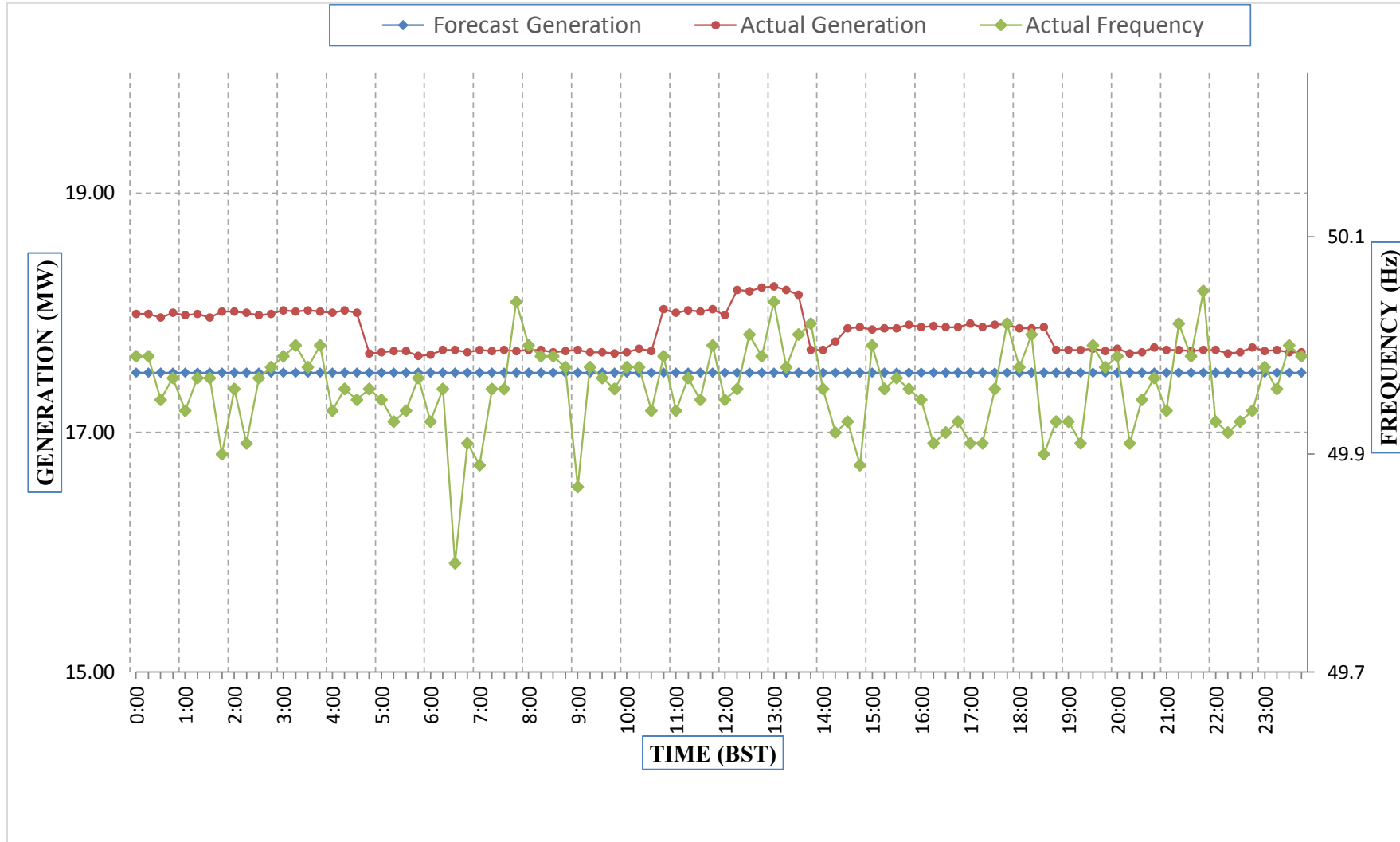
Bhutan Power Corporation Ltd.
Bhutan Power System Operator
Thimphu: Bhutan



Message No.: Enter your message number
From: Shift In-charge, Control Room

Date: 22-Feb-18
Time: 9:20

Forecast Generation & Actual Generation of Dagachhu(21-Feb-2018).



Yours faithfully,
Karma Yangden