



འབྲུག་གྲོག་མེ་ལམ་འཛིན།

Bhutan Power Corporation Ltd.  
Bhutan Power System Operator  
Thimphu: Bhutan



Message No.: Enter your message number  
From: Shift In-charge, Control Room

Date: 20-Feb-18  
Time: 12:16

To  
Managing Director, BPC. Email: gemtshering@bpc.bt  
Director, O&MD, DGPC. Email: director.umd@drukgreen.com  
General Manager, TD, BPC. Email: ktobgye@bpc.bt  
General Manager, DCSD, BPC. Email: sandeeprai@bpc.bt

Sub: **Load Generation Balance Report of Yesterday (19-Feb-2018).**

Hours (BST)	Forecast		Actual		Hours (BST)	Forecast		Actual	
	Generation	Load	Generation	Load		Generation	Load	Generation	Load
0:00	259.60	263.20	267.92	268.89	12:00	259.60	282.90	268.84	287.54
0:15	259.60	252.20	268.15	267.61	12:15	259.60	287.70	269.54	283.61
0:30	259.60	251.80	266.78	263.06	12:30	259.60	286.60	268.95	287.68
0:45	259.60	238.50	266.66	261.98	12:45	259.60	281.30	268.61	289.27
1:00	259.60	228.70	269.39	262.41	13:00	259.60	282.70	269.42	291.16
1:15	259.60	223.00	276.08	261.73	13:15	259.60	278.70	268.79	287.94
1:30	259.60	225.00	275.98	263.82	13:30	259.60	278.90	269.37	281.35
1:45	259.60	228.30	276.57	261.67	13:45	259.60	278.00	270.56	274.05
2:00	259.60	222.40	276.19	260.84	14:00	259.60	278.20	269.40	281.53
2:15	259.60	224.20	275.17	253.29	14:15	259.60	279.60	270.29	285.19
2:30	259.60	229.50	274.05	254.58	14:30	259.60	281.80	272.00	295.31
2:45	259.60	242.00	272.32	258.88	14:45	259.60	282.50	270.77	300.67
3:00	259.60	255.20	274.33	253.00	15:00	259.60	280.50	271.79	292.41
3:15	259.60	259.60	272.52	241.00	15:15	259.60	281.80	270.88	304.32
3:30	259.60	263.00	271.38	245.41	15:30	259.60	281.30	270.11	305.77
3:45	259.60	265.30	272.64	257.75	15:45	259.60	284.50	270.47	308.22
4:00	259.60	268.10	273.18	257.94	16:00	259.60	285.50	270.45	311.66
4:15	259.60	268.40	270.16	260.09	16:15	259.60	287.40	271.37	310.25
4:30	259.60	270.20	271.30	259.59	16:30	259.60	288.20	271.83	310.39
4:45	259.60	270.90	270.52	251.23	16:45	259.60	295.00	271.30	305.88
5:00	259.60	269.80	269.21	237.77	17:00	259.60	296.90	271.13	312.74
5:15	259.60	274.60	269.19	246.43	17:15	270.60	300.00	270.93	316.80
5:30	259.60	278.00	269.76	248.28	17:30	270.60	305.70	270.93	312.98
5:45	259.60	280.20	270.11	251.58	17:45	270.60	307.40	271.16	310.77
6:00	259.60	283.50	269.02	254.87	18:00	270.60	316.80	270.45	314.46
6:15	270.60	286.40	268.88	266.59	18:15	270.60	322.30	269.22	321.90
6:30	270.60	291.90	269.21	270.44	18:30	270.60	330.10	271.59	326.38
6:45	270.60	305.10	270.48	284.94	18:45	270.60	329.30	271.38	333.75
7:00	270.60	315.10	269.29	290.91	19:00	270.60	330.90	270.05	330.37
7:15	270.60	316.30	270.27	277.28	19:15	270.60	331.20	270.95	330.70
7:30	270.60	315.50	268.62	292.30	19:30	270.60	325.50	270.69	328.92
7:45	270.60	312.10	269.77	289.91	19:45	270.60	321.80	271.38	319.05
8:00	270.60	308.30	270.04	287.91	20:00	270.60	317.00	271.77	318.73
8:15	270.60	311.90	270.05	284.30	20:15	270.60	316.60	271.14	322.07
8:30	270.60	305.60	269.02	289.05	20:30	270.60	316.40	272.23	317.52
8:45	270.60	253.80	269.90	279.53	20:45	270.60	313.80	271.91	313.98
9:00	270.60	303.50	269.82	285.57	21:00	270.60	311.80	270.03	317.29
9:15	259.60	300.80	268.80	292.80	21:15	259.60	308.00	270.84	305.83
9:30	259.60	297.50	270.09	284.88	21:30	259.60	304.80	270.58	299.39
9:45	259.60	296.60	268.85	287.60	21:45	259.60	301.10	271.90	299.29
10:00	259.60	290.20	270.29	292.38	22:00	259.60	301.90	270.72	294.09
10:15	259.60	287.80	269.52	281.87	22:15	259.60	299.20	271.02	289.02
10:30	259.60	285.30	270.05	289.69	22:30	259.60	299.80	270.78	283.35
10:45	259.60	284.30	269.79	289.55	22:45	259.60	294.70	271.04	287.08
11:00	259.60	283.00	269.76	290.61	23:00	259.60	293.70	271.77	275.45
11:15	259.60	279.30	270.23	287.03	23:15	259.60	292.80	271.60	271.92
11:30	259.60	280.60	269.69	277.89	23:30	259.60	291.10	271.42	270.48
11:45	259.60	281.60	269.96	280.96	23:45	259.60	281.20	271.50	266.93

Yours faithfully  
Tshering Deki

Coincidental peak load of Day(Last year):	
297.23	19-Feb-17
Maximum Load till date:	
362.09	14-Nov-17



འབྲུག་གློག་ལེ་ལས་འཛིན།

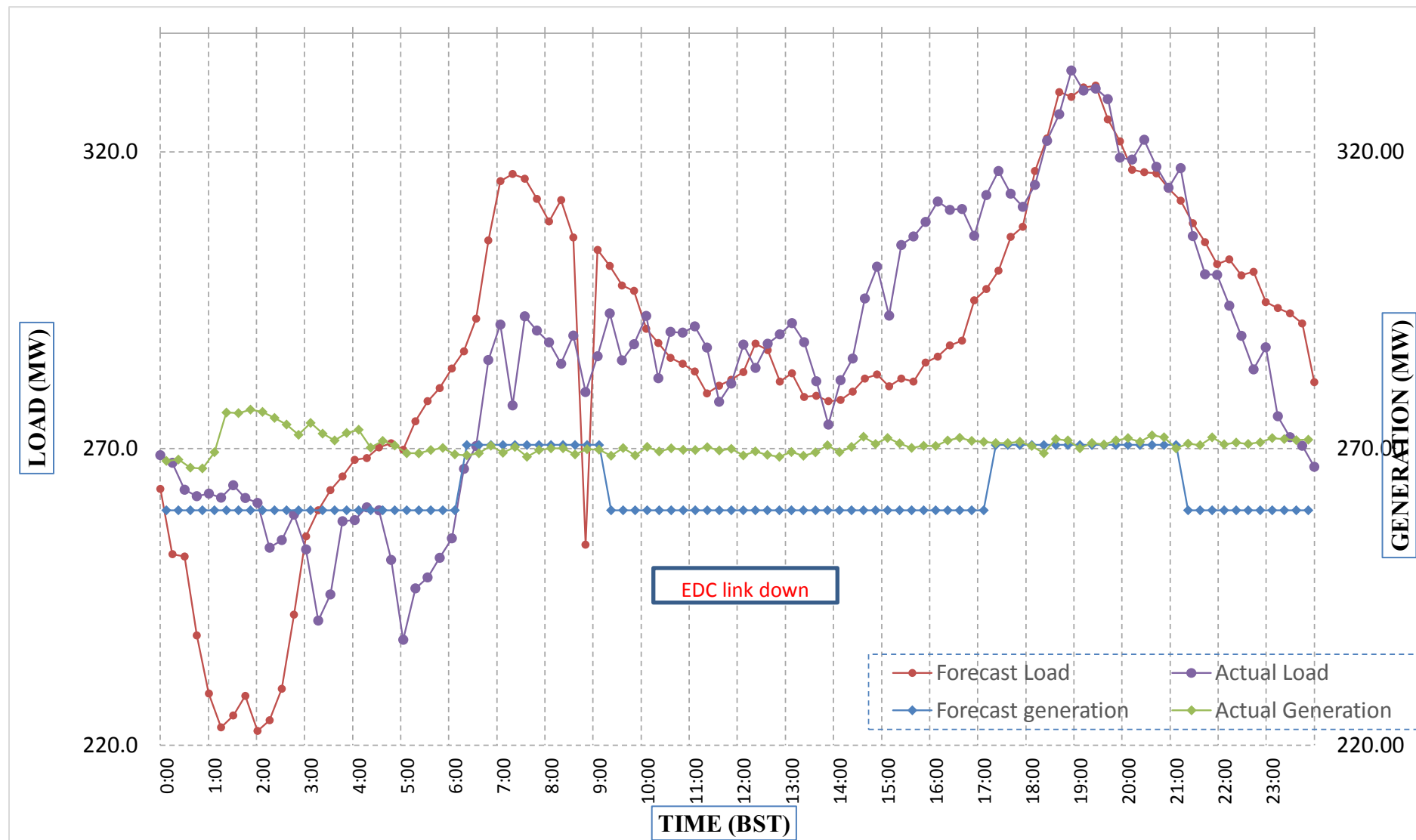
Bhutan Power Corporation Ltd.  
 Bhutan Power System Operator  
 Thimphu: Bhutan



Message No.: Enter your message number  
 From: Shift In-charge, Control Room

Date: 20-Feb-18  
 Time: 12:16

Forecast Generation & Load with Actual Generation & Load (19-Feb-2018).



Yours faithfully,  
 Tshering Deki

	MW	Coincidental peak load of Day(Last year):	
Peak Co-incident Generation(19-Feb-2018).	276.57	297.23	19-Feb-17
Peak Co-incident Load(19-Feb-2018).	333.75		
		Maximum Load till date:	
		362.09	14-Nov-17

Telephone: +975-02335631; Fax: +975-02335632; Email: bhutansystemoperator@bpc.bt; www.bpc.bt



འབྲུག་གྲོག་མེ་ལམ་འཛིན།

Bhutan Power Corporation Ltd.  
Bhutan Power System Operator  
Thimphu: Bhutan



Message No.: Enter your message number  
From: Shift In-charge, Control Room

Date: 20-Feb-18  
Time: 12:16

To  
Managing Director, BPC. Email: gemtshering@bpc.bt  
Director, O&MD, DGPC. Email: director.umd@drukgreen.com  
General Manager, TD, BPC. Email: thinleygyeltshen@bpc.bt  
General Manager, DCSD, BPC. Email: sandeeprai@bpc.bt

Sub: Load Generation Balance Report of Today (20-Feb-2018).

Hours (BST)	Forecast		Actual	
	Generation	Load	Generation	Load
0:00	263.50	273.50	271.88	267.88
0:15	266.00	276.00	271.10	265.44
0:30	266.00	276.00	271.80	265.09
0:45	265.70	275.70	272.09	266.29
1:00	266.90	276.90	271.85	266.73
1:15	268.10	278.10	270.87	263.63
1:30	267.90	277.90	270.80	266.56
1:45	268.40	278.40	271.84	268.52
2:00	263.70	273.70	272.38	264.56
2:15	262.80	272.80	272.08	264.88
2:30	249.70	259.70	272.84	246.66
2:45	246.40	256.40	272.97	250.29
3:00	247.60	257.60	272.30	255.98
3:15	226.30	236.30	271.89	264.20
3:30	211.70	221.70	272.54	264.21
3:45	202.20	212.20	272.71	264.37
4:00	201.30	211.30	273.51	265.73
4:15	209.90	219.90	274.38	264.91
4:30	234.80	244.80	276.45	267.70
4:45	250.40	260.40	276.54	267.44
5:00	252.10	262.10	278.19	263.95
5:15	256.40	266.40	276.51	268.90
5:30	261.90	271.90	277.54	262.65
5:45	263.30	273.30	277.83	272.77
6:00	270.20	280.20	277.41	272.13
6:15	274.10	284.10	277.52	281.18
6:30	285.50	295.50	278.13	288.36
6:45	304.80	314.80	277.12	300.20
7:00	317.80	327.80	277.12	299.53
7:15	317.50	327.50	270.11	315.00
7:30	302.20	312.20	267.16	314.93
7:45	300.60	310.60	265.40	310.23
8:00	288.20	298.20	266.06	304.92
8:15	274.40	284.40	266.72	303.43
8:30	236.30	246.30	265.05	302.36
8:45	251.00	261.00	266.63	298.76
9:00	291.80	301.80	265.71	298.70

Yours faithfully,  
Tshering Deki

Coincidental peak load of Day(Last year):	
299.71	20-Feb-17

Maximum Load till date:	
362.09	14-Nov-17



འབྲུག་གྲོག་ཚེ་ལས་འཛིན།

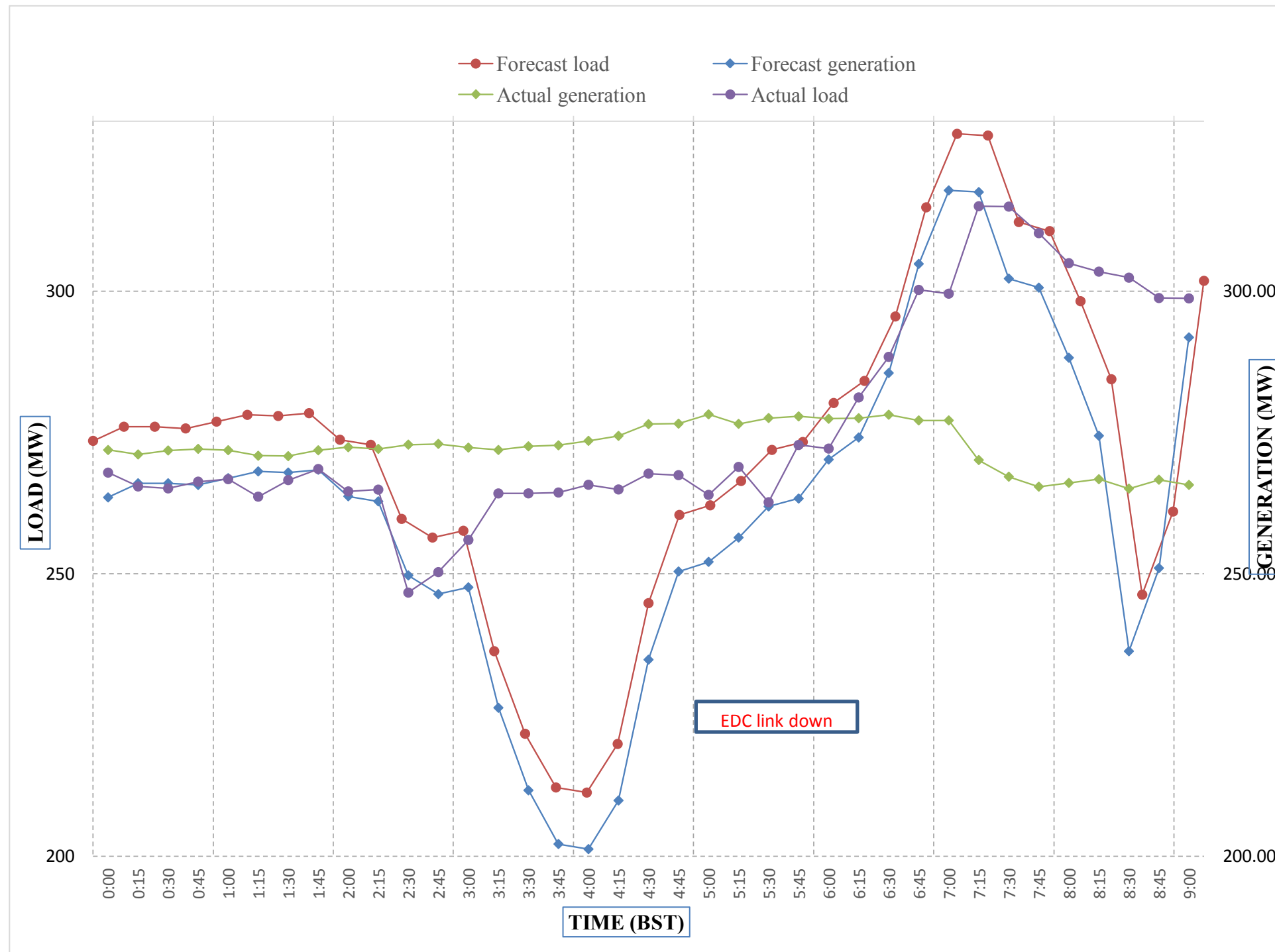
Bhutan Power Corporation Ltd.  
 Bhutan Power System Operator  
 Thimphu: Bhutan



Message No.: Enter your message number  
 From: Shift In-charge, Control Room

Date: 20-Feb-18  
 Time: 12:16

Forecast Generation & Load with Actual Generation & Load of Today from 00:00hrs to 09:00hrs(20-Feb-2018).

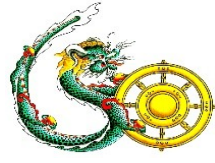


Yours faithfully  
 Tshering Deki

<b>Coincidental peak load of Day(Last)</b>	
272.75	20-Feb-17
<b>Maximum Load till date:</b>	
269.21875	16-Nov-00



འབྲུག་གྲོག་ལེན་ལྷན་ཁག།  
**Bhutan Power Corporation Ltd.**  
**Bhutan Power System Operator**  
 Thimphu: Bhutan



**Message No.:** Enter your message number **Date:** 20-Feb-18  
**From:** Shift In-charge, Control Room **Time:** 12:16

**To**  
 Managing Director, BPC. Email: gemtshering@bpc.bt  
 Director, O&MD, DGPC. Email: director.omid@drukgreen.com  
 General Manager, TD, BPC. Email: ktobgye@bpc.bt  
 Advisor, BPC. Email: bharattamang@bpc.bt

**Sub:** Load Generation Balance Report of Tomorrow (21-Feb-2018).

Hours (BST)	Forecast		Hours (BST)	Forecast	
	Generation	Load		Generation	Load
0:00	248.10	272.60	12:00	259.30	283.80
0:15	250.20	274.70	12:15	263.70	288.20
0:30	248.80	273.30	12:30	265.40	289.90
0:45	247.50	272.00	12:45	261.60	286.10
1:00	249.10	273.60	13:00	260.70	285.20
1:15	250.80	275.30	13:15	259.80	284.30
1:30	249.50	274.00	13:30	255.90	280.40
1:45	251.10	275.60	13:45	253.50	278.00
2:00	246.80	271.30	14:00	253.70	278.20
2:15	241.90	266.40	14:15	257.10	281.60
2:30	235.50	260.00	14:30	260.40	284.90
2:45	236.80	261.30	14:45	263.50	288.00
3:00	237.90	262.40	15:00	263.50	288.00
3:15	231.40	255.90	15:15	265.60	290.10
3:30	234.10	252.60	15:30	265.60	290.10
3:45	216.60	235.10	15:45	267.70	292.20
4:00	203.10	215.60	16:00	268.40	292.90
4:15	198.10	210.60	16:15	269.30	295.20
4:30	203.20	215.70	16:30	269.90	294.60
4:45	208.80	221.30	16:45	269.90	299.30
5:00	226.60	245.10	17:00	279.10	303.60
5:15	244.80	263.30	17:15	279.10	305.50
5:30	257.50	276.00	17:30	282.80	307.60
6:45	252.00	276.50	17:45	283.50	309.70
6:00	255.40	279.90	18:00	283.50	314.70
6:15	260.20	284.70	18:15	283.50	321.30
6:30	276.80	301.30	18:30	283.50	326.80
6:45	289.30	313.80	18:45	283.60	329.20
7:00	300.90	325.40	19:00	283.60	330.50
7:15	298.60	323.10	19:15	283.50	330.80
7:30	298.30	322.80	19:30	283.50	324.70
7:45	290.80	315.30	19:45	283.60	320.90
8:00	266.40	290.90	20:00	283.60	317.20
8:15	233.90	258.40	20:15	283.60	316.20
8:30	208.20	232.70	20:30	283.60	317.40
8:45	267.20	291.70	20:45	283.50	313.80
9:00	275.20	299.70	21:00	283.50	311.80
9:15	272.70	297.20	21:15	281.50	306.00
9:30	269.20	293.70	21:30	279.60	304.10
9:45	268.70	293.20	21:45	276.30	300.80
10:00	265.10	289.60	22:00	265.70	299.20
10:15	262.80	287.30	22:15	265.70	293.70
10:30	263.50	288.00	22:30	265.70	293.40
10:45	260.70	285.20	22:45	264.50	289.00
11:00	260.10	284.60	23:00	261.00	285.50
11:15	260.00	284.50	23:15	258.00	283.90
11:30	258.50	283.00	23:30	257.60	282.10
11:45	260.40	284.90	23:45	226.90	276.60

Yours faithfully,  
 Tshering Deki

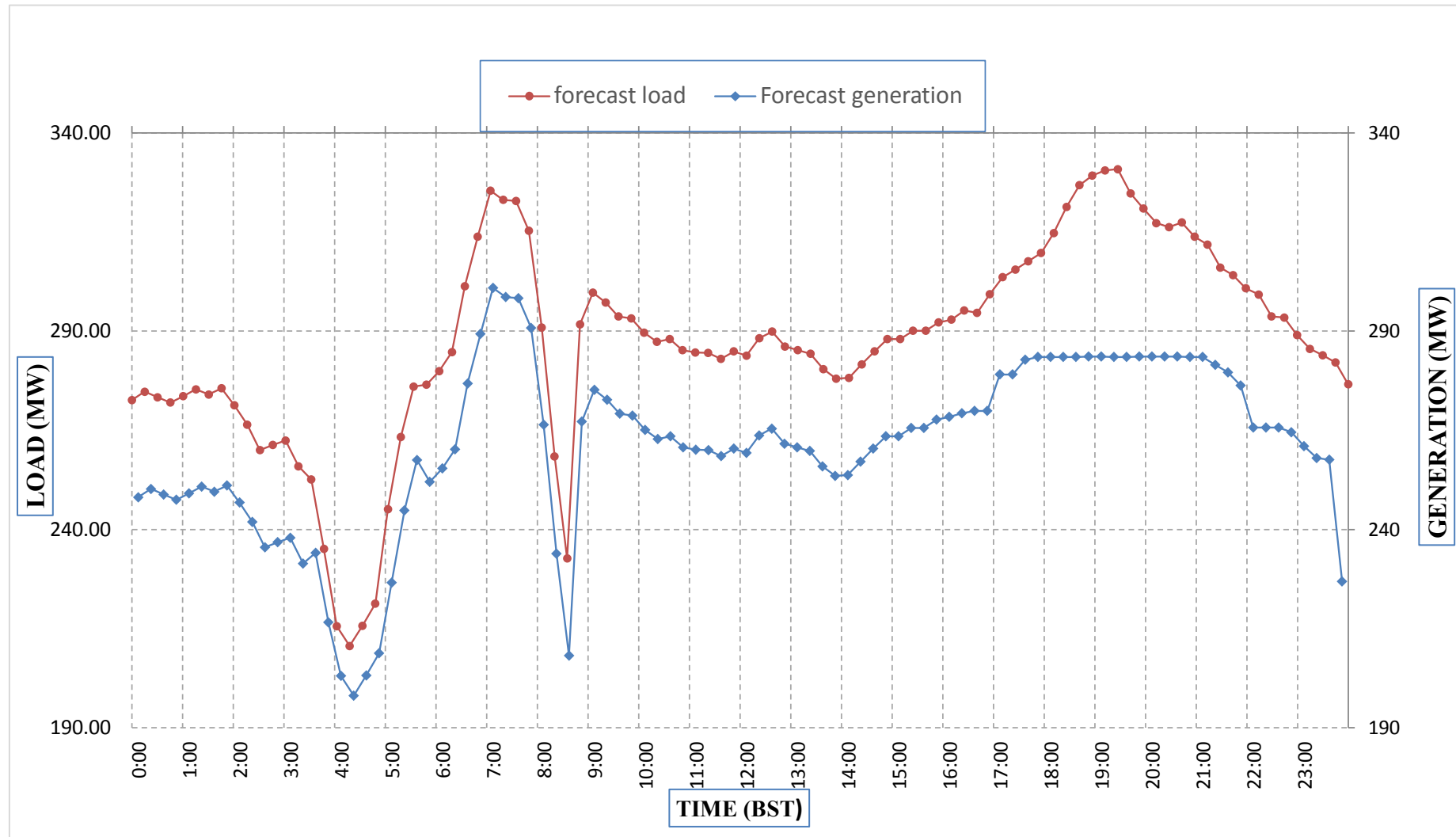




Message No.: Enter your message number  
 From: Shift In-charge, Control Room

Date: 20-Feb-18  
 Time: 11:18

Forecast Generation & Load Forecast for Tomorrow (21-Feb-2018).



Yours faithfully,  
 Tshering Deki

	MW
Scheduled Peak Generation(21-Feb-2018).	300.90
Forecast Peak Load(21-Feb-2018).	330.80



ཕྱག་ལུགས་ལྷན་ཁག་ལྷན་ཁག་།

Bhutan Power Corporation Ltd.  
Bhutan Power System Operator  
Thimphu: Bhutan



**Message No.:** Enter your message number **Date:** 20-Feb-18  
**From:** Shift In-charge, Control Room **Time:** 12:16

**To**  
Managing Director, BPC. Email: gemtshering@bpc.bt  
Director, O&MD, DGPC. Email: director.umd@drukgreen.com  
General Manager, TD, BPC. Email: ktobgye@bpc.bt  
Advisor, BPC. Email: bharattamang@bpc.bt

**Sub:** Forecast Generation and Actual Generation of Dagachhu (19-Feb-2018).

Hours (BST)	Actual Frequency	Forecast Generation	Actual Generation	Hours (BST)	Actual Frequency	Forecast Generation	Actual Generation
0:00	49.99	17.50	17.99	12:00	49.97	17.50	17.97
0:15	49.99	17.50	17.99	12:15	49.93	17.50	18.00
0:30	49.97	17.50	17.95	12:30	49.96	17.50	18.00
0:45	49.98	17.50	17.98	12:45	50.03	17.50	18.01
1:00	49.99	17.50	18.00	13:00	50.06	17.50	18.00
1:15	49.97	17.50	17.98	13:15	50.02	17.50	18.01
1:30	49.97	17.50	17.98	13:30	49.98	17.50	18.03
1:45	49.99	17.50	17.99	13:45	49.99	17.50	17.70
2:00	49.98	17.50	18.01	14:00	49.96	17.50	17.66
2:15	49.98	17.50	17.99	14:15	49.97	17.50	17.89
2:30	49.97	17.50	18.00	14:30	49.97	17.50	17.86
2:45	49.98	17.50	18.00	14:45	50.00	17.50	17.87
3:00	49.95	17.50	17.98	15:00	49.94	17.50	17.86
3:15	49.91	17.50	18.00	15:15	49.86	17.50	17.88
3:30	49.95	17.50	18.00	15:30	49.94	17.50	17.86
3:45	49.98	17.50	18.01	15:45	49.87	17.50	17.89
4:00	49.92	17.50	17.99	16:00	49.95	17.50	17.87
4:15	49.95	17.50	17.98	16:15	49.91	17.50	17.86
4:30	49.96	17.50	17.97	16:30	49.91	17.50	17.87
4:45	49.99	17.50	17.98	16:45	49.94	17.50	17.88
5:00	49.92	17.50	18.00	17:00	49.96	17.50	17.89
5:15	49.93	17.50	17.99	17:15	49.93	17.50	17.89
5:30	49.94	17.50	17.97	17:30	49.98	17.50	17.86
6:45	50.00	17.50	18.01	17:45	50.03	17.50	17.86
6:00	49.97	17.50	17.99	18:00	50.00	17.50	17.91
6:15	49.93	17.50	18.02	18:15	49.97	17.50	17.88
6:30	49.88	17.50	17.99	18:30	49.93	17.50	17.88
6:45	49.93	17.50	17.99	18:45	49.97	17.50	17.87
7:00	49.95	17.50	17.98	19:00	49.96	17.50	17.88
7:15	50.00	17.50	18.01	19:15	49.99	17.50	17.89
7:30	49.96	17.50	17.99	19:30	49.98	17.50	17.88
7:45	49.98	17.50	18.01	19:45	49.94	17.50	17.85
8:00	50.01	17.50	17.99	20:00	50.01	17.50	17.87
8:15	50.01	17.50	17.99	20:15	49.97	17.50	17.87
8:30	49.99	17.50	18.00	20:30	49.97	17.50	17.87
8:45	49.99	17.50	17.99	20:45	49.99	17.50	17.87
9:00	49.94	17.50	17.65	21:00	49.93	17.50	17.90
9:15	49.95	17.50	17.69	21:15	49.98	17.50	17.88
9:30	49.94	17.50	18.02	21:30	49.99	17.50	17.85
9:45	49.90	17.50	17.98	21:45	50.04	17.50	17.86
10:00	49.89	17.50	18.00	22:00	49.93	17.50	17.83
10:15	49.91	17.50	18.02	22:15	49.98	17.50	17.86
10:30	49.86	17.50	17.98	22:30	49.94	17.50	17.86
10:45	49.90	17.50	18.00	22:45	49.96	17.50	17.85
11:00	49.89	17.50	18.00	23:00	49.98	17.50	17.88
11:15	49.98	17.50	18.01	23:15	49.94	17.50	17.86
11:30	49.92	17.50	17.99	23:30	49.93	17.50	17.89
11:45	49.98	17.50	17.99	23:45	49.96	17.50	17.85

Yours faithfully,  
Tshering Deki



འབྲུག་ལྗོངས་ལས་འདེན་ཁུངས།

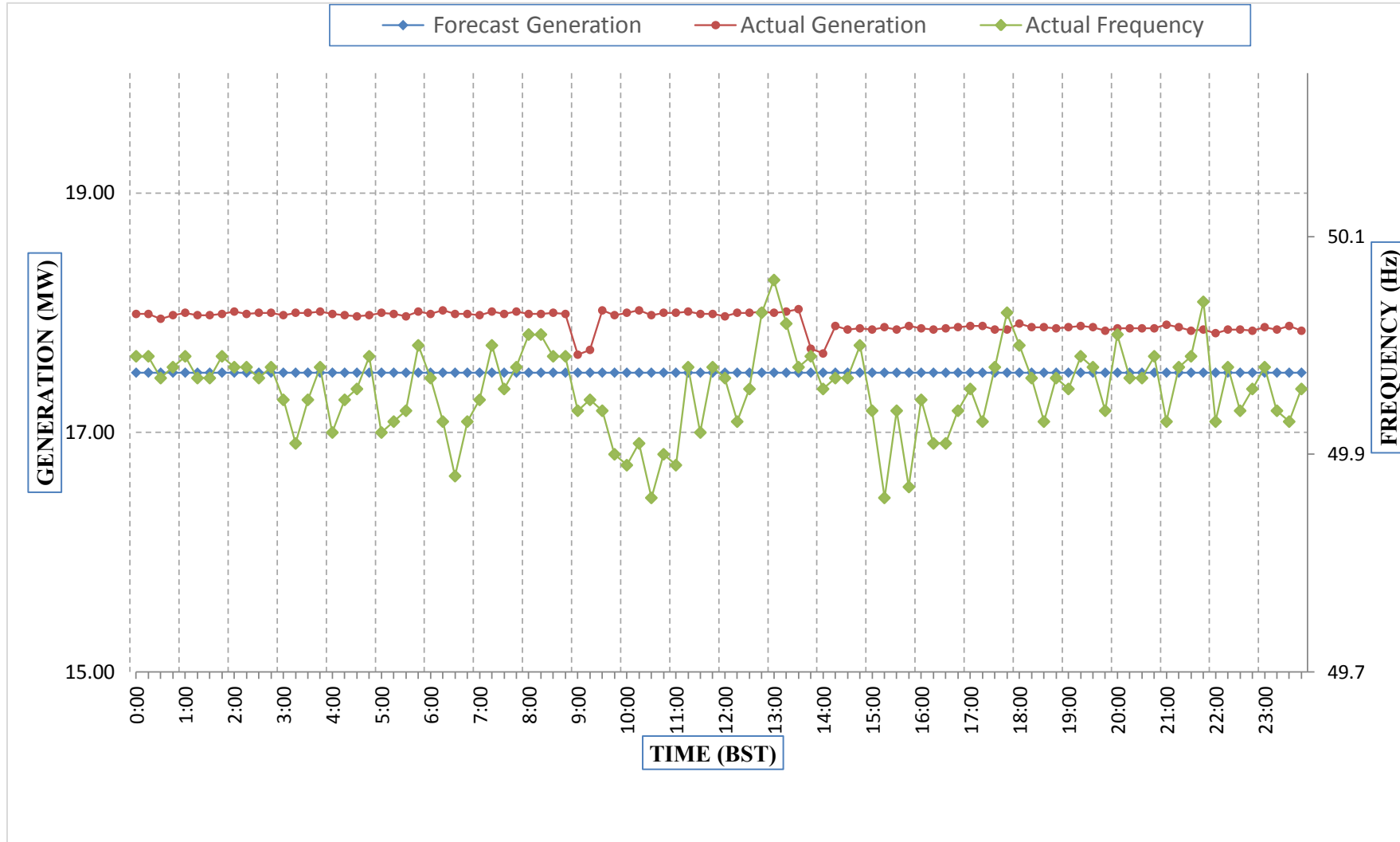
Bhutan Power Corporation Ltd.  
Bhutan Power System Operator  
Thimphu: Bhutan



Message No.: Enter your message number  
From: Shift In-charge, Control Room

Date: 20-Feb-18  
Time: 12:16

Forecast Generation & Actual Generation of Dagachhu(19-Feb-2018).



Yours faithfully,  
Tshering Deki