



འབྲུག་ཤོག་མེ་ལམ་འཛིན།

Bhutan Power Corporation Ltd.
Bhutan Power System Operator
Thimphu: Bhutan



Message No.: Enter your message number
From: Shift In-charge, Control Room

Date: 19-Feb-18
Time: 12:16

To
Managing Director, BPC. Email: gemtshering@bpc.bt
Director, O&MD, DGPC. Email: director.umd@drukgreen.com
General Manager, TD, BPC. Email: ktobgye@bpc.bt
General Manager, DCSD, BPC. Email: sandeeprai@bpc.bt

Sub: **Load Generation Balance Report of Yesterday (18-Feb-2018).**

Hours (BST)	Forecast		Actual		Hours (BST)	Forecast		Actual	
	Generation	Load	Generation	Load		Generation	Load	Generation	Load
0:00	251.50	260.60	265.47	275.73	12:00	251.50	280.40	251.74	289.43
0:15	251.50	245.00	265.51	276.98	12:15	251.50	285.40	251.24	289.36
0:30	251.50	244.70	266.59	271.09	12:30	251.50	285.60	253.19	287.29
0:45	251.50	230.30	265.60	270.48	12:45	251.50	281.70	253.36	291.21
1:00	251.50	217.70	264.22	266.38	13:00	251.50	282.50	252.92	285.70
1:15	251.50	209.40	265.79	271.28	13:15	251.50	278.60	257.11	282.03
1:30	251.50	211.10	266.12	269.77	13:30	251.50	280.30	258.63	290.94
1:45	251.50	216.20	265.38	261.98	13:45	251.50	276.60	260.20	278.52
2:00	251.50	211.90	264.36	266.90	14:00	251.50	278.10	260.37	274.54
2:15	251.50	214.10	264.12	268.37	14:15	251.50	280.50	260.95	273.02
2:30	251.50	220.60	262.64	263.25	14:30	251.50	281.50	260.23	268.68
2:45	251.50	234.40	262.08	267.58	14:45	251.50	282.90	260.14	284.55
3:00	251.50	252.40	260.80	267.69	15:00	251.50	279.30	260.41	281.50
3:15	251.50	256.20	261.55	263.70	15:15	251.50	279.80	259.57	293.93
3:30	251.50	257.00	261.51	266.81	15:30	251.50	279.00	260.71	295.99
3:45	251.50	262.00	261.91	266.67	15:45	251.50	283.10	260.20	294.88
4:00	251.50	266.60	261.80	265.05	16:00	251.50	284.30	260.08	292.95
4:15	251.50	267.20	261.50	265.29	16:15	251.50	286.10	259.91	295.95
4:30	251.50	270.00	260.66	269.33	16:30	251.50	285.10	263.45	297.75
4:45	251.50	272.50	262.66	264.15	16:45	251.50	293.50	264.23	299.49
5:00	251.50	270.20	261.73	269.40	17:00	251.50	295.80	265.77	302.79
5:15	251.50	277.00	261.66	266.93	17:15	261.90	298.70	264.31	304.62
5:30	251.50	283.10	261.41	260.88	17:30	261.90	306.90	262.97	303.68
5:45	251.50	285.40	261.09	268.31	17:45	261.90	312.50	264.19	309.30
6:00	251.50	285.30	260.30	272.53	18:00	261.90	321.40	266.03	310.16
6:15	261.90	288.10	260.41	267.45	18:15	261.90	325.80	265.88	308.95
6:30	261.90	296.30	261.50	281.20	18:30	261.90	335.50	266.24	304.55
6:45	261.90	310.30	261.22	276.20	18:45	261.90	335.00	265.81	325.38
7:00	261.90	322.00	260.86	289.17	19:00	261.90	335.40	265.79	325.94
7:15	261.90	325.10	259.90	296.10	19:15	261.90	336.10	266.86	327.00
7:30	261.90	322.10	260.86	294.62	19:30	261.90	328.60	266.70	319.39
7:45	261.90	319.10	261.11	300.88	19:45	261.90	325.20	266.27	316.88
8:00	261.90	313.60	259.87	302.02	20:00	261.90	320.60	266.78	311.61
8:15	261.90	314.60	259.97	303.77	20:15	261.90	318.30	266.54	317.02
8:30	261.90	299.20	259.46	305.69	20:30	261.90	318.90	266.82	317.34
8:45	261.90	251.00	259.68	296.25	20:45	261.90	315.80	266.02	311.29
9:00	261.90	305.60	260.28	300.30	21:00	261.90	314.60	267.13	310.85
9:15	251.50	302.30	258.86	296.86	21:15	251.50	311.90	266.27	309.19
9:30	251.50	294.90	251.46	292.85	21:30	251.50	307.80	265.88	304.44
9:45	251.50	295.00	250.13	290.45	21:45	251.50	303.10	268.67	301.32
10:00	251.50	293.60	250.54	291.51	22:00	251.50	305.80	269.34	293.98
10:15	251.50	292.30	250.54	284.15	22:15	251.50	305.60	269.12	291.04
10:30	251.50	288.30	251.19	289.36	22:30	251.50	306.10	267.50	284.33
10:45	251.50	286.10	250.74	277.84	22:45	251.50	300.40	270.27	281.72
11:00	251.50	282.90	250.46	282.88	23:00	251.50	299.90	268.12	278.21
11:15	251.50	281.00	249.91	287.77	23:15	251.50	299.60	268.15	272.33
11:30	251.50	281.50	250.01	291.00	23:30	251.50	296.50	268.37	272.66
11:45	251.50	278.50	251.48	292.92	23:45	251.50	281.60	270.23	269.41

Yours faithfully
Phub zam

Coincidental peak load of Day(Last year):	
286.77	19-Feb-17
Maximum Load till date:	
362.09	14-Nov-17



འབྲུག་གློག་ཤིང་ལས་འཛིན།

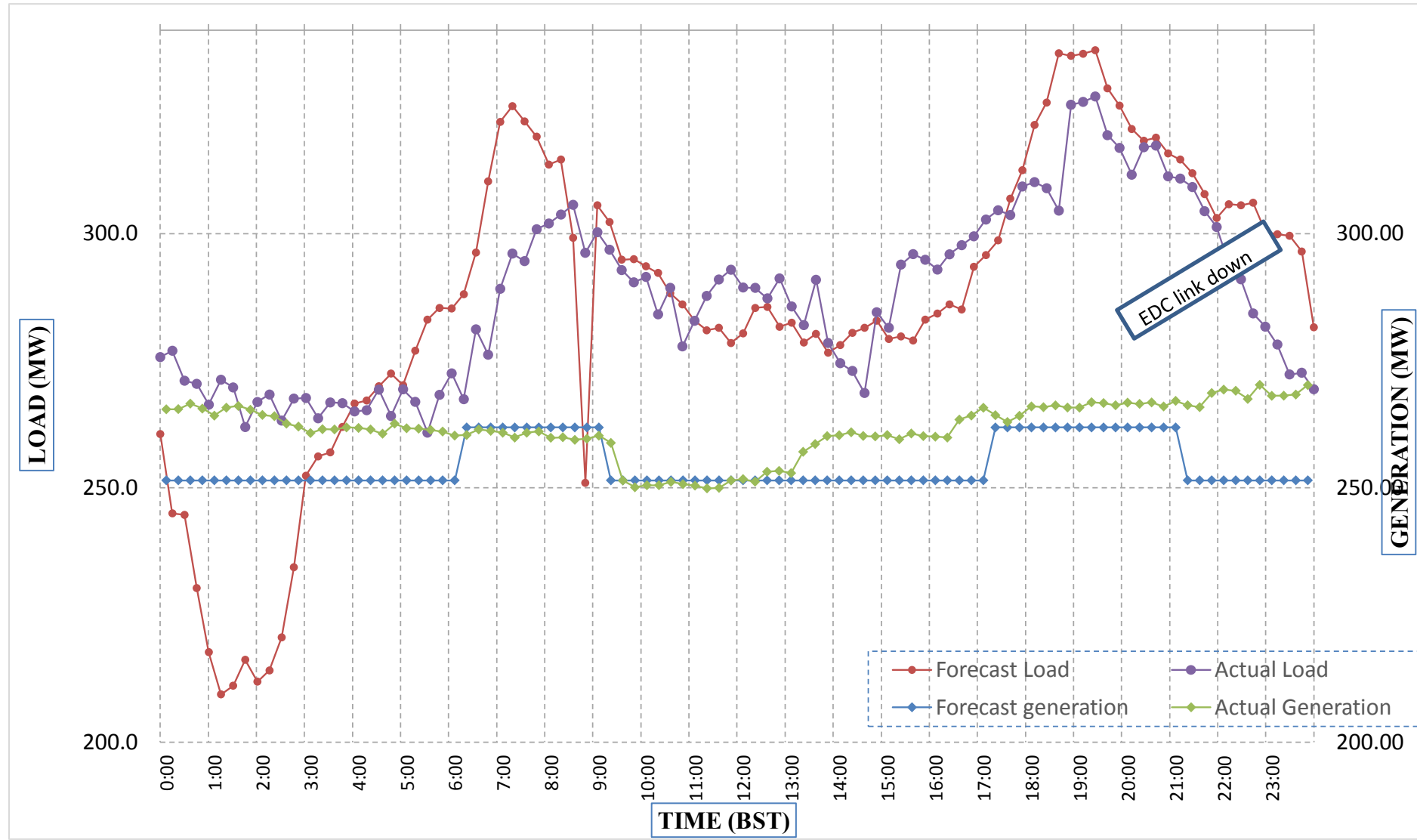
Bhutan Power Corporation Ltd.
 Bhutan Power System Operator
 Thimphu: Bhutan



Message No.: Enter your message number
 From: Shift In-charge, Control Room

Date: 19-Feb-18
 Time: 12:16

Forecast Generation & Load with Actual Generation & Load (18-Feb-2018).



Yours faithfully,
 Phub zam

	MW	Coincidental peak load of Day(Last year):	
Peak Co-incident Generation(18-Feb-2018).	270.27	286.77	19-Feb-17
Peak Co-incident Load(18-Feb-2018).	327.00		
		Maximum Load till date:	
		362.09	14-Nov-17

Telephone: +975-02335631; Fax: +975-02335632; Email: bhutansystemoperator@bpc.bt; www.bpc.bt



འབྲུག་གློག་ལེ་ལམ་འཛིན།

Bhutan Power Corporation Ltd.
Bhutan Power System Operator
Thimphu: Bhutan



Message No.: Enter your message number
From: Shift In-charge, Control Room

Date: 19-Feb-18
Time: 12:16

To
Managing Director, BPC. Email: gemtshering@bpc.bt
Director, O&MD, DGPC. Email: director.umd@drukgreen.com
General Manager, TD, BPC. Email: thinleygyeltshen@bpc.bt
General Manager, DCSD, BPC. Email: sandeeprai@bpc.bt

Sub: Load Generation Balance Report of Today (19-Feb-2018).

Hours (BST)	Forecast		Actual	
	Generation	Load	Generation	Load
0:00	259.60	263.20	267.92	268.89
0:15	259.60	252.20	268.15	267.61
0:30	259.60	251.80	266.78	263.06
0:45	259.60	238.50	266.66	261.98
1:00	259.60	228.70	269.39	262.41
1:15	259.60	223.00	276.08	261.73
1:30	259.60	225.00	275.98	263.82
1:45	259.60	228.30	276.57	261.67
2:00	259.60	222.40	276.19	260.84
2:15	259.60	224.20	275.17	253.29
2:30	259.60	229.50	274.05	254.58
2:45	259.60	242.00	272.32	258.88
3:00	259.60	255.20	274.33	253.00
3:15	259.60	259.60	272.52	241.00
3:30	259.60	263.00	271.38	245.41
3:45	259.60	265.30	272.64	257.75
4:00	259.60	268.10	273.18	257.94
4:15	259.60	268.40	270.16	260.09
4:30	259.60	270.20	271.30	259.59
4:45	259.60	270.90	270.52	251.23
5:00	259.60	269.80	269.21	237.77
5:15	259.60	274.60	269.19	246.43
5:30	259.60	278.00	269.76	248.28
5:45	259.60	280.20	270.11	251.58
6:00	259.60	283.50	269.02	254.87
6:15	270.60	286.40	268.88	266.59
6:30	270.60	291.90	269.21	270.44
6:45	270.60	305.10	270.48	284.94
7:00	270.60	315.10	269.29	290.91
7:15	270.60	316.30	270.27	277.28
7:30	270.60	315.50	268.62	292.30
7:45	270.60	312.10	269.77	289.91
8:00	270.60	308.30	270.04	287.91
8:15	270.60	311.90	270.05	284.30
8:30	270.60	305.60	269.02	289.05
8:45	270.60	253.80	269.90	279.53
9:00	270.60	303.50	269.82	285.57

Yours faithfully,
Phub zam

Coincidental peak load of Day(Last year):	
297.23	19-Feb-17

Maximum Load till date:	
362.09	14-Nov-17



འབྲུག་གྲོག་མེ་ལས་འཛིན།

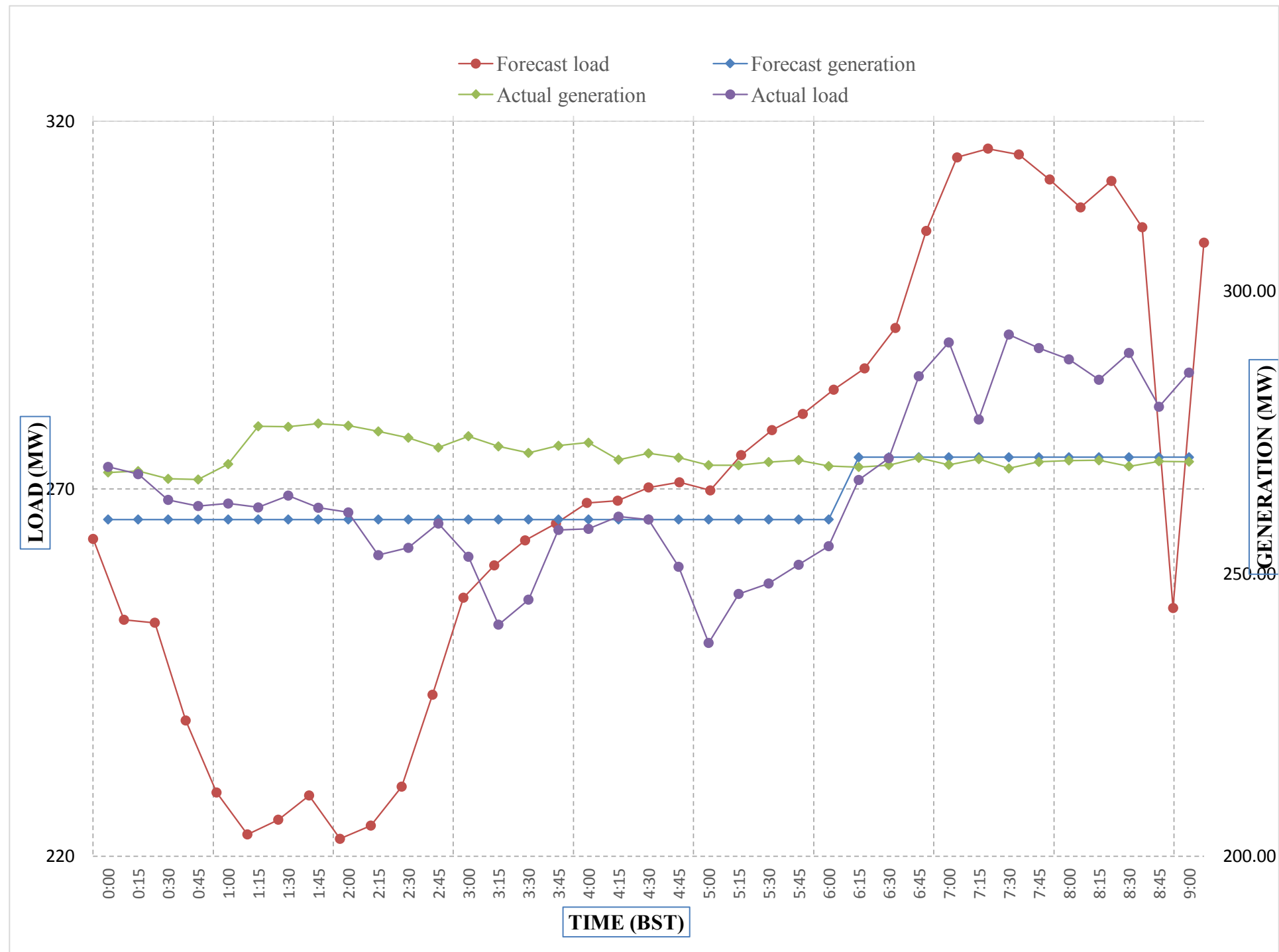
Bhutan Power Corporation Ltd.
Bhutan Power System Operator
Thimphu: Bhutan



Message No.: Enter your message number
From: Shift In-charge, Control Room

Date: 19-Feb-18
Time: 12:16

Forecast Generation & Load with Actual Generation & Load of Today from 00:00hrs to 09:00hrs(19-Feb-2018).

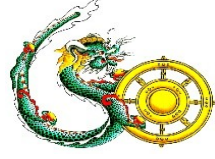


Yours faithfully
Phub zam

Coincidental peak load of Day>Last	
272.75	19-Feb-17
Maximum Load till date:	
265.882813	3-Nov-00



འབྲུག་གྲོགས་ལེན་ལེ་སྒོམ་ལྷན་ཁག།
Bhutan Power Corporation Ltd.
Bhutan Power System Operator
Thimphu: Bhutan



Message No.: Enter your message number **Date:** 19-Feb-18
From: Shift In-charge, Control Room **Time:** 12:16

To
 Managing Director, BPC. Email: gemtshering@bpc.bt
 Director, O&MD, DGPC. Email: director.omid@drukgreen.com
 General Manager, TD, BPC. Email: ktobgye@bpc.bt
 Advisor, BPC. Email: bharattamang@bpc.bt

Sub: **Load Generation Balance Report of Tomorrow (20-Feb-2018).**

Hours (BST)	Forecast		Hours (BST)	Forecast	
	Generation	Load		Generation	Load
0:00	263.50	273.50	12:00	274.70	284.70
0:15	266.00	276.00	12:15	278.40	288.40
0:30	266.00	276.00	12:30	277.90	287.90
0:45	265.70	275.70	12:45	274.10	284.10
1:00	266.90	276.90	13:00	272.70	282.70
1:15	268.10	278.10	13:15	272.40	282.40
1:30	267.90	277.90	13:30	271.50	281.50
1:45	268.40	278.40	13:45	268.40	278.40
2:00	263.70	273.70	14:00	267.20	277.20
2:15	262.80	272.80	14:15	268.40	278.40
2:30	249.70	259.70	14:30	269.70	279.70
2:45	246.40	256.40	14:45	272.50	282.50
3:00	247.60	257.60	15:00	272.10	282.10
3:15	226.30	236.30	15:15	274.70	284.70
3:30	211.70	221.70	15:30	274.30	284.30
3:45	202.20	212.20	15:45	276.00	286.00
4:00	201.30	211.30	16:00	276.70	286.70
4:15	209.90	219.90	16:15	279.60	289.60
4:30	234.80	244.80	16:30	280.60	290.60
4:45	250.40	260.40	16:45	286.20	296.20
5:00	252.10	262.10	17:00	289.10	299.10
5:15	256.40	266.40	17:15	291.50	301.50
5:30	261.90	271.90	17:30	295.90	305.90
6:45	263.30	273.30	17:45	298.70	308.70
6:00	270.20	280.20	18:00	303.80	313.80
6:15	274.10	284.10	18:15	310.40	320.40
6:30	285.50	295.50	18:30	315.40	325.40
6:45	304.80	314.80	18:45	317.60	327.60
7:00	317.80	327.80	19:00	319.30	329.30
7:15	317.50	327.50	19:15	320.20	330.20
7:30	302.20	312.20	19:30	313.70	323.70
7:45	300.60	310.60	19:45	309.20	319.20
8:00	288.20	298.20	20:00	306.20	316.20
8:15	274.40	284.40	20:15	306.00	316.00
8:30	236.30	246.30	20:30	306.10	316.10
8:45	251.00	261.00	20:45	303.00	313.00
9:00	291.80	301.80	21:00	301.20	311.20
9:15	289.00	299.00	21:15	298.10	308.10
9:30	285.80	295.80	21:30	295.50	305.50
9:45	284.20	294.20	21:45	290.50	300.50
10:00	278.20	288.20	22:00	289.80	299.80
10:15	275.20	285.20	22:15	286.40	296.40
10:30	276.70	286.70	22:30	284.90	294.90
10:45	273.10	283.10	22:45	279.90	289.90
11:00	272.00	282.00	23:00	278.60	288.60
11:15	272.70	282.70	23:15	277.90	287.90
11:30	273.20	283.20	23:30	276.10	286.10
11:45	274.40	284.40	23:45	268.30	278.30

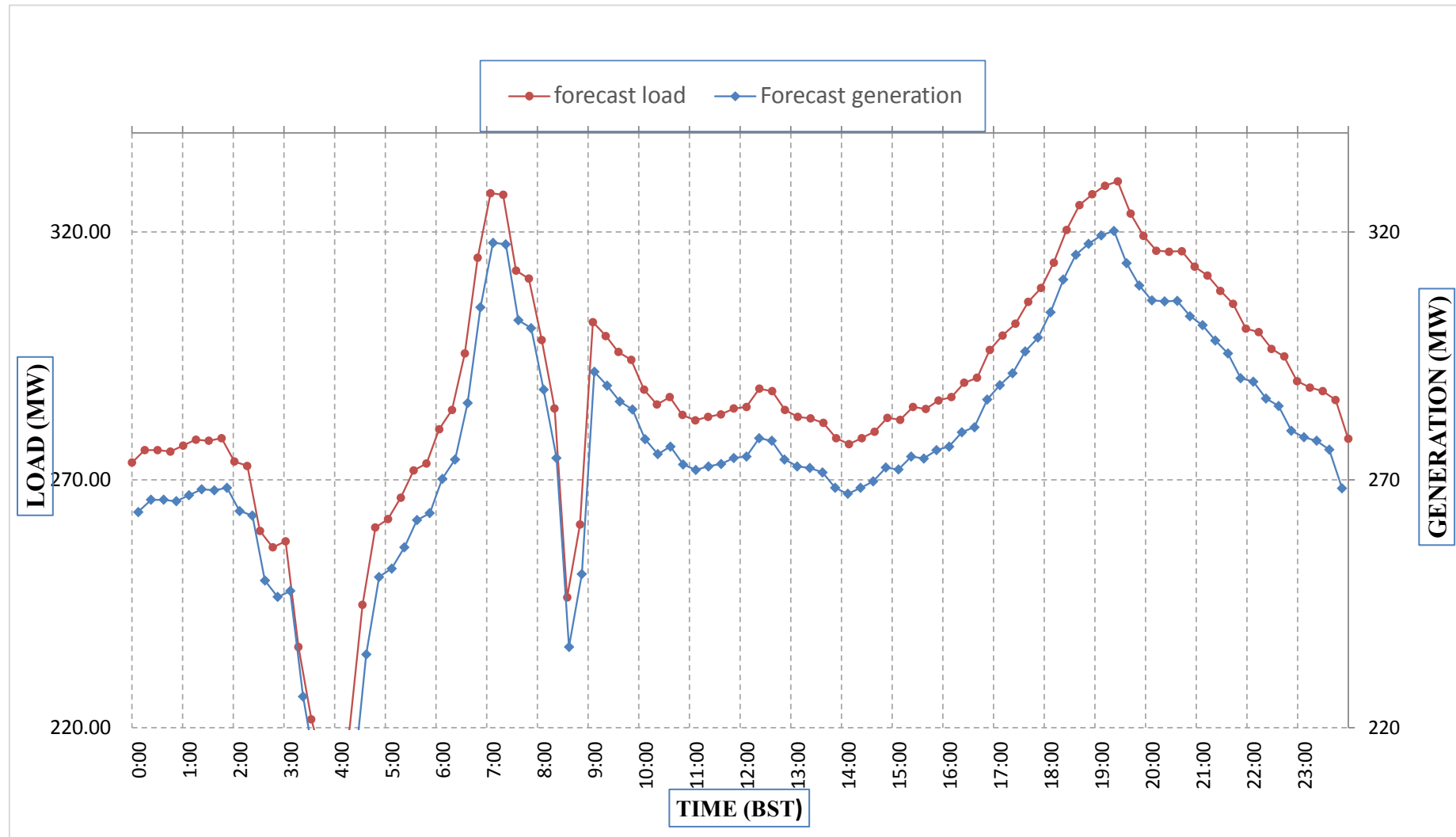
Yours faithfully,
 Phub zam



Message No.: Enter your message number
 From: Shift In-charge, Control Room

Date: 20-Feb-18
 Time: 10:18

Forecast Generation & Load Forecast for Tomorrow (21-Feb-2018).



Yours faithfully,
 Phub zam

	MW
Scheduled Peak Generation(21-Feb-2018).	320.20
Forecast Peak Load(21-Feb-2018).	330.20



འབྲུག་གྲོག་ཚེ་ལས་འདི་རྒྱ།



Bhutan Power Corporation Ltd.
Bhutan Power System Operator
Thimphu: Bhutan

Message No.: Enter your message number Date: 19-Feb-18
From: Shift In-charge, Control Room Time: 12:16

To
Managing Director, BPC. Email: gemtshering@bpc.bt
Director, O&MD, DGPC. Email: director.umd@drukgreen.com
General Manager, TD, BPC. Email: ktobgye@bpc.bt
Advisor, BPC. Email: bharattamang@bpc.bt

Sub: Forecast Generation and Actual Generation of Dagachhu (18-Feb-2018).

Hours (BST)	Actual Frequency	Forecast Generation	Actual Generation	Hours (BST)	Actual Frequency	Forecast Generation	Actual Generation
0:00	49.99	17.50	17.80	12:00	49.96	17.50	17.88
0:15	49.98	17.50	17.78	12:15	50.02	17.50	17.90
0:30	50.01	17.50	17.79	12:30	50.05	17.50	17.91
0:45	50.02	17.50	17.74	12:45	50.05	17.50	17.92
1:00	50.00	17.50	17.79	13:00	50.07	17.50	17.92
1:15	50.03	17.50	17.89	13:15	50.02	17.50	17.89
1:30	50.01	17.50	17.89	13:30	49.99	17.50	17.90
1:45	50.01	17.50	17.91	13:45	50.01	17.50	17.90
2:00	49.97	17.50	17.86	14:00	49.97	17.50	17.89
2:15	49.98	17.50	17.92	14:15	49.99	17.50	17.91
2:30	49.99	17.50	17.87	14:30	49.99	17.50	17.93
2:45	50.04	17.50	17.88	14:45	49.98	17.50	17.90
3:00	49.99	17.50	17.85	15:00	49.98	17.50	17.90
3:15	49.97	17.50	17.89	15:15	49.92	17.50	17.92
3:30	49.98	17.50	17.88	15:30	49.95	17.50	18.05
3:45	50.00	17.50	17.89	15:45	49.96	17.50	18.05
4:00	49.92	17.50	17.89	16:00	49.94	17.50	18.05
4:15	49.94	17.50	17.90	16:15	49.94	17.50	18.04
4:30	49.99	17.50	17.89	16:30	49.94	17.50	18.05
4:45	49.97	17.50	17.88	16:45	49.99	17.50	18.09
5:00	49.94	17.50	17.90	17:00	50.00	17.50	18.03
5:15	49.91	17.50	17.89	17:15	49.95	17.50	18.03
5:30	49.94	17.50	17.88	17:30	49.93	17.50	18.07
6:45	49.98	17.50	17.88	17:45	50.00	17.50	18.04
6:00	49.97	17.50	17.90	18:00	50.01	17.50	18.08
6:15	49.92	17.50	17.91	18:15	50.01	17.50	18.06
6:30	49.84	17.50	17.97	18:30	49.96	17.50	18.07
6:45	49.96	17.50	17.67	18:45	49.94	17.50	18.06
7:00	49.94	17.50	17.69	19:00	49.95	17.50	18.09
7:15	49.97	17.50	17.91	19:15	49.94	17.50	18.06
7:30	49.93	17.50	17.87	19:30	49.93	17.50	18.03
7:45	49.98	17.50	17.92	19:45	49.94	17.50	18.48
8:00	49.99	17.50	17.90	20:00	49.95	17.50	18.48
8:15	49.97	17.50	17.93	20:15	49.91	17.50	18.50
8:30	49.97	17.50	17.93	20:30	49.88	17.50	18.50
8:45	49.95	17.50	17.91	20:45	49.89	17.50	18.50
9:00	49.96	17.50	17.90	21:00	49.92	17.50	18.50
9:15	49.92	17.50	17.92	21:15	49.99	17.50	18.18
9:30	49.99	17.50	17.88	21:30	50.07	17.50	18.18
9:45	50.03	17.50	17.91	21:45	50.09	17.50	18.21
10:00	49.96	17.50	17.90	22:00	49.93	17.50	18.20
10:15	49.95	17.50	17.91	22:15	49.94	17.50	18.21
10:30	49.91	17.50	17.87	22:30	49.98	17.50	18.21
10:45	49.96	17.50	17.93	22:45	49.99	17.50	18.22
11:00	50.00	17.50	17.88	23:00	49.98	17.50	18.17
11:15	49.96	17.50	17.91	23:15	49.98	17.50	18.20
11:30	49.94	17.50	17.92	23:30	49.95	17.50	18.22
11:45	49.99	17.50	17.88	23:45	49.99	17.50	18.22

Yours faithfully,
Phub zam



འབྲུག་ལྷོ་གཞི་རྒྱུ་ལེ་སྐོར་ལྷན་ཁག་།

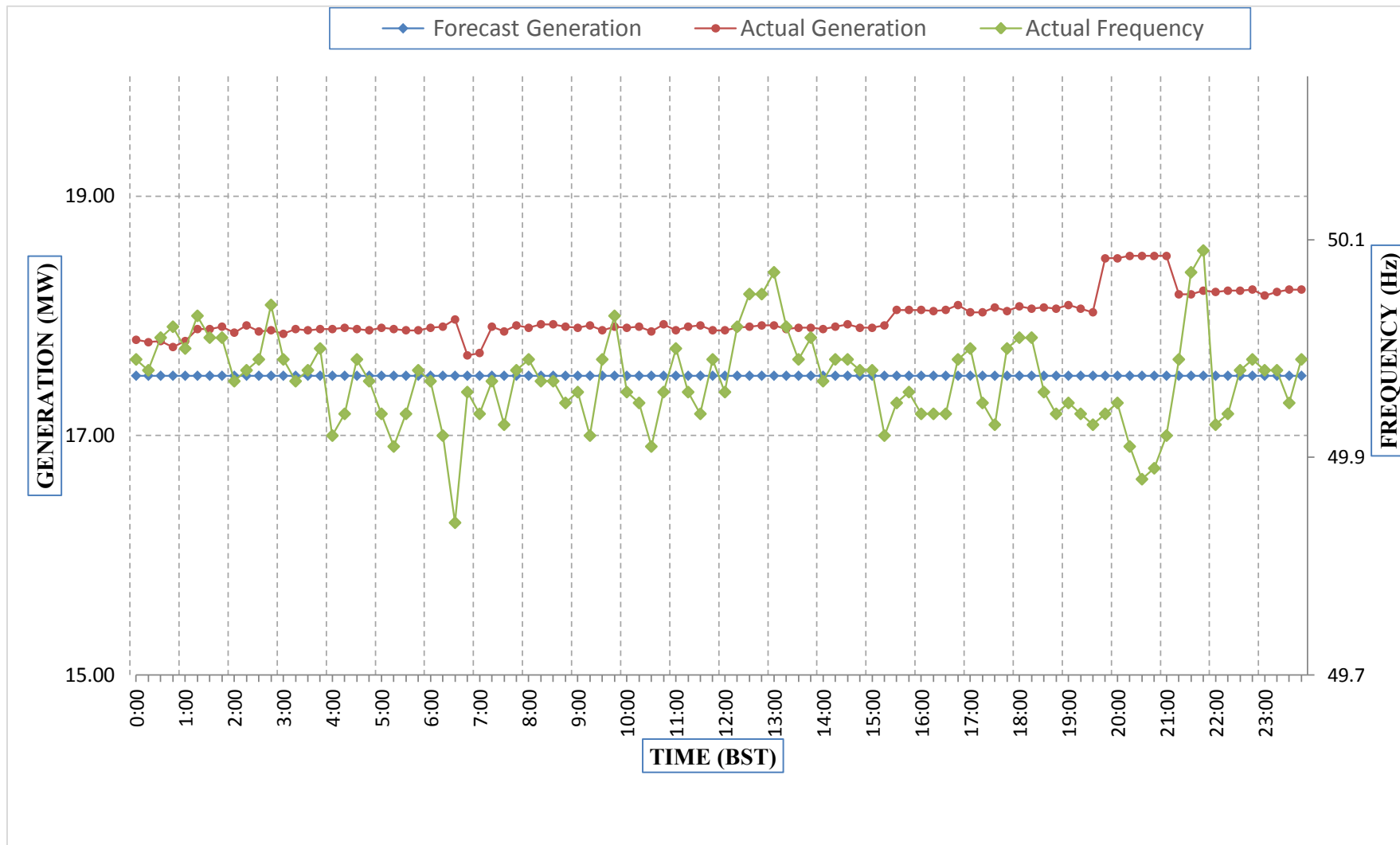
Bhutan Power Corporation Ltd.
Bhutan Power System Operator
Thimphu: Bhutan



Message No.: Enter your message number
From: Shift In-charge, Control Room

Date: 19-Feb-18
Time: 12:16

Forecast Generation & Actual Generation of Dagachhu(18-Feb-2018).



Yours faithfully,
Phub zam