



འབྲུག་རྒྱལ་ཁོག་སྐོར་ལམ་འཛིན།

Bhutan Power Corporation Ltd.
Bhutan Power System Operator
Thimphu: Bhutan



Message No.: Enter your message number
From: Shift In-charge, Control Room

Date: 18-Feb-18
Time: 10:19

To
Managing Director, BPC. Email: gemtshering@bpc.bt
Director, O&MD, DGPC. Email: director.omb@drukgreen.com
General Manager, TD, BPC. Email: ktobgye@bpc.bt
General Manager, DCSD, BPC. Email: sandeeprai@bpc.bt

Sub: **Load Generation Balance Report of Yesterday (17-Feb-2018).**

Hours (BST)	Forecast		Actual		Hours (BST)	Forecast		Actual	
	Generation	Load	Generation	Load		Generation	Load	Generation	Load
0:00	252.70	266.70	267.46	266.95	12:00	252.70	288.20	260.24	293.14
0:15	252.70	265.60	267.76	271.71	12:15	252.70	290.20	259.88	293.62
0:30	252.70	257.30	267.48	269.79	12:30	252.70	289.30	258.73	292.17
0:45	252.70	255.30	267.35	265.20	12:45	252.70	286.50	260.28	283.27
1:00	252.70	254.50	266.41	270.16	13:00	252.70	286.20	259.41	283.54
1:15	252.70	237.30	266.93	269.50	13:15	252.70	282.80	259.81	283.20
1:30	252.70	220.30	266.81	271.69	13:30	252.70	284.50	258.62	277.01
1:45	252.70	221.20	266.80	271.76	13:45	252.70	279.20	260.40	276.29
2:00	252.70	216.80	267.66	270.28	14:00	252.70	281.90	260.38	281.36
2:15	252.70	210.30	266.23	269.84	14:15	252.70	284.70	259.90	282.41
2:30	252.70	207.10	267.73	262.23	14:30	252.70	284.80	259.87	283.30
2:45	252.70	206.10	267.30	268.02	14:45	252.70	286.80	260.48	287.20
3:00	252.70	215.40	267.48	268.41	15:00	252.70	282.20	258.77	287.98
3:15	252.70	230.50	264.97	265.60	15:15	252.70	282.40	258.62	288.81
3:30	252.70	234.40	263.63	267.90	15:30	252.70	283.80	259.29	291.32
3:45	252.70	250.40	263.60	271.56	15:45	252.70	290.00	260.41	292.16
4:00	252.70	262.40	263.78	269.65	16:00	252.70	291.50	260.57	292.19
4:15	252.70	263.30	261.89	271.60	16:15	252.70	291.40	260.35	291.77
4:30	252.70	270.80	260.80	268.36	16:30	252.70	293.40	259.75	298.60
4:45	252.70	271.40	261.91	265.39	16:45	252.70	299.00	260.09	295.27
5:00	252.70	271.10	259.95	266.09	17:00	265.40	299.50	259.62	302.55
5:15	252.70	278.40	259.14	261.27	17:15	265.40	302.10	259.13	307.45
5:30	252.70	285.90	259.30	262.66	17:30	265.40	311.60	259.48	306.93
5:45	252.70	287.70	259.48	266.48	17:45	265.40	316.90	260.98	299.51
6:00	265.40	286.70	261.42	269.15	18:00	265.40	328.20	260.23	310.42
6:15	265.40	291.40	259.86	277.61	18:15	265.40	332.20	259.96	314.59
6:30	265.40	300.00	258.94	274.36	18:30	265.40	341.50	259.34	319.55
6:45	265.40	316.80	259.70	278.92	18:45	265.40	340.50	260.38	321.67
7:00	265.40	330.20	260.27	289.21	19:00	265.40	340.90	260.35	325.98
7:15	265.40	329.60	259.66	292.09	19:15	265.40	339.60	259.57	319.33
7:30	265.40	325.00	259.84	297.02	19:30	265.40	333.40	261.17	318.52
7:45	265.40	321.60	260.30	296.43	19:45	265.40	327.00	260.09	320.73
8:00	265.40	312.80	260.09	298.08	20:00	265.40	321.40	260.05	316.34
8:15	265.40	288.40	259.77	301.04	20:15	265.40	319.00	260.70	315.83
8:30	265.40	258.10	260.77	298.91	20:30	265.40	319.70	259.66	320.43
8:45	265.40	260.00	259.41	295.11	20:45	265.40	317.50	259.11	313.69
9:00	252.70	300.50	260.63	307.96	21:00	265.40	317.50	261.27	309.63
9:15	252.70	298.30	259.12	304.24	21:15	265.40	314.40	263.63	298.10
9:30	252.70	292.80	260.32	309.29	21:30	265.40	310.00	262.53	305.92
9:45	252.70	293.00	259.45	302.73	21:45	265.40	304.90	264.42	303.67
10:00	252.70	291.40	259.13	303.80	22:00	265.40	307.30	265.63	298.19
10:15	252.70	287.40	260.26	277.51	22:15	265.40	307.90	266.10	294.03
10:30	252.70	285.30	260.40	277.67	22:30	265.40	307.50	266.65	293.00
10:45	252.70	282.90	260.25	282.14	22:45	265.40	300.60	265.66	290.63
11:00	252.70	282.20	259.35	284.66	23:00	265.40	301.10	265.53	280.48
11:15	252.70	284.40	260.16	273.47	23:15	265.40	302.40	265.50	281.70
11:30	252.70	288.40	259.17	280.66	23:30	265.40	299.20	265.88	276.99
11:45	252.70	286.10	260.26	290.95	23:45	265.40	282.30	265.34	279.58

Yours faithfully
Kinley Wangmo

Coincidental peak load of Day(Last year):	
271.81 MW	17-Feb-17
Maximum Load till date:	
362.09	14-Nov-17



འབྲུག་གློག་ཤིང་ལས་འཛིན།

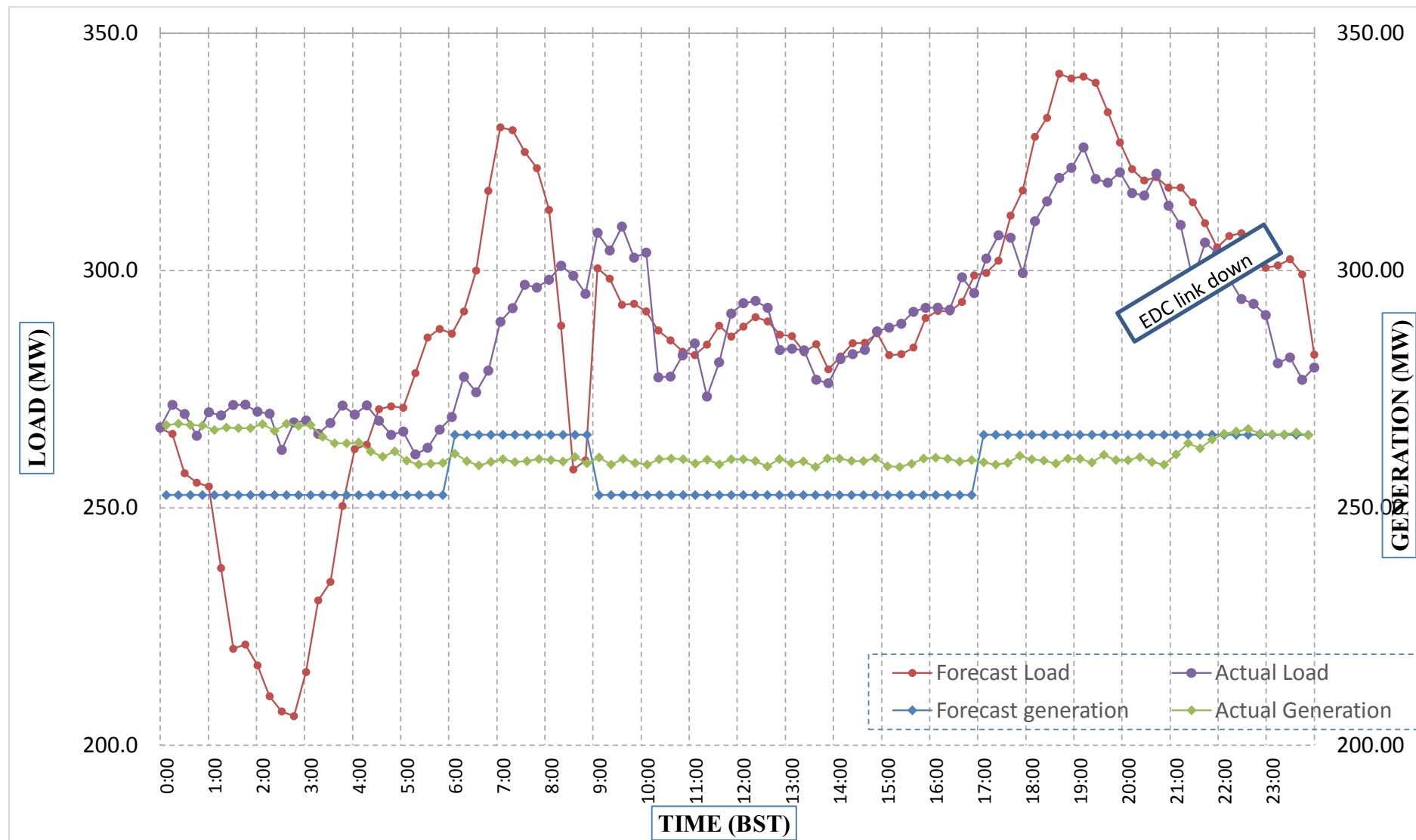
Bhutan Power Corporation Ltd.
Bhutan Power System Operator
Thimphu: Bhutan



Message No.: Enter your message number
From: Shift In-charge, Control Room

Date: 18-Feb-18
Time: 10:19

Forecast Generation & Load with Actual Generation & Load (17-Feb-2018).



Yours faithfully,
Kinley Wangmo

	MW	Coincidental peak load of Day(Last year):	
Peak Co-incident Generation(17-Feb-2018).	267.76	271.81 MW	17-Feb-17
Peak Co-incident Load(17-Feb-2018).	325.98		
		Maximum Load till date:	
		362.09	14-Nov-17

Telephone: +975-02335631; Fax: +975-02335632; Email: bhutansystemoperator@bpc.bt; www.bpc.bt



འབྲུག་གྲོག་ལེ་ལམ་འཛིན།

Bhutan Power Corporation Ltd.
Bhutan Power System Operator
Thimphu: Bhutan



Message No.: Enter your message number
From: Shift In-charge, Control Room

Date: 18-Feb-18
Time: 10:19

To
Managing Director, BPC. Email: gemtshering@bpc.bt
Director, O&MD, DGPC. Email: director.umd@drukgreen.com
General Manager, TD, BPC. Email: thinleygyeltshen@bpc.bt
General Manager, DCSD, BPC. Email: sandeeprai@bpc.bt

Sub: Load Generation Balance Report of Today (18-Feb-2018).

Hours (BST)	Forecast		Actual	
	Generation	Load	Generation	Load
0:00	251.50	260.60	265.47	275.73
0:15	251.50	245.00	265.51	276.98
0:30	251.50	244.70	266.59	271.09
0:45	251.50	230.30	265.60	270.48
1:00	251.50	217.70	264.22	266.38
1:15	251.50	209.40	265.79	271.28
1:30	251.50	211.10	266.12	269.77
1:45	251.50	216.20	265.38	261.98
2:00	251.50	211.90	264.36	266.90
2:15	251.50	214.10	264.12	268.37
2:30	251.50	220.60	262.64	263.25
2:45	251.50	234.40	262.08	267.58
3:00	251.50	252.40	260.80	267.69
3:15	251.50	256.20	261.55	263.70
3:30	251.50	257.00	261.51	266.81
3:45	251.50	262.00	261.91	266.67
4:00	251.50	266.60	261.80	265.05
4:15	251.50	267.20	261.50	265.29
4:30	251.50	270.00	260.66	269.33
4:45	251.50	272.50	262.66	264.15
5:00	251.50	270.20	261.73	269.40
5:15	251.50	277.00	261.66	266.93
5:30	251.50	283.10	261.41	260.88
5:45	251.50	285.40	261.09	268.31
6:00	251.50	285.30	260.30	272.53
6:15	261.90	288.10	260.41	267.45
6:30	261.90	296.30	261.50	281.20
6:45	261.90	310.30	261.22	276.20
7:00	261.90	322.00	260.86	289.17
7:15	261.90	325.10	259.90	296.10
7:30	261.90	322.10	260.86	294.62
7:45	261.90	319.10	261.11	300.88
8:00	261.90	313.60	259.87	302.02
8:15	261.90	314.60	259.97	303.77
8:30	261.90	299.20	259.46	305.69
8:45	261.90	251.00	259.68	296.25
9:00	261.90	305.60	260.28	300.30

Yours faithfully,
Kinley Wangmo

Coincidental peak load of Day(Last year):	
298.81	18-Feb-17

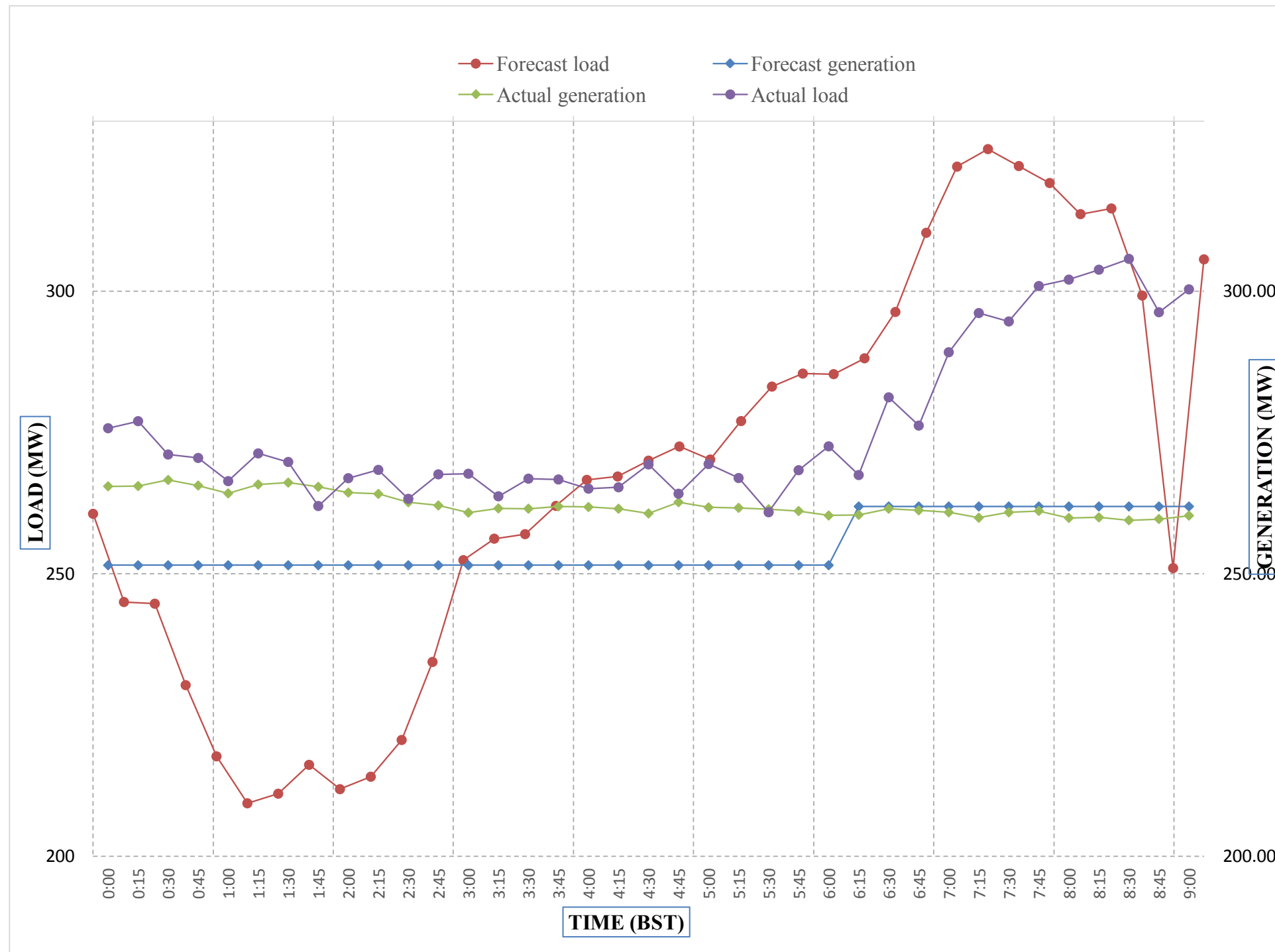
Maximum Load till date:	
362.09	14-Nov-17



Message No.: Enter your message number
 From: Shift In-charge, Control Room

Date: 18-Feb-18
 Time: 10:19

Forecast Generation & Load with Actual Generation & Load of Today from 00:00hrs to 09:00hrs(18-Feb-2018).

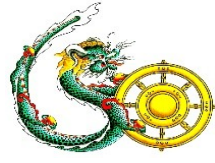


Yours faithfully
 Kinley Wangmo

Coincidental peak load of Day(Last)	
272.75	18-Feb-17
Maximum Load till date:	
259.960938	9-Nov-00



འབྲུག་གྲོག་ལེན་ལྷན་ཁག།
Bhutan Power Corporation Ltd.
Bhutan Power System Operator
Thimphu: Bhutan



Message No.: Enter your message number **Date:** 18-Feb-18
From: Shift In-charge, Control Room **Time:** 10:19

To
 Managing Director, BPC. Email: gemtshering@bpc.bt
 Director, O&MD, DGPC. Email: director.omid@drukgreen.com
 General Manager, TD, BPC. Email: ktobgye@bpc.bt
 Advisor, BPC. Email: bharattamang@bpc.bt

Sub: **Load Generation Balance Report of Tomorrow (19-Feb-2018).**

Hours (BST)	Forecast		Hours (BST)	Forecast	
	Generation	Load		Generation	Load
0:00	259.60	263.20	12:00	259.60	282.90
0:15	259.60	252.20	12:15	259.60	287.70
0:30	259.60	251.80	12:30	259.60	286.60
0:45	259.60	238.50	12:45	259.60	281.30
1:00	259.60	228.70	13:00	259.60	282.70
1:15	259.60	223.00	13:15	259.60	278.70
1:30	259.60	225.00	13:30	259.60	278.90
1:45	259.60	228.30	13:45	259.60	278.00
2:00	259.60	222.40	14:00	259.60	278.20
2:15	259.60	224.20	14:15	259.60	279.60
2:30	259.60	229.50	14:30	259.60	281.80
2:45	259.60	242.00	14:45	259.60	282.50
3:00	259.60	255.20	15:00	259.60	280.50
3:15	259.60	259.60	15:15	259.60	281.80
3:30	259.60	263.00	15:30	259.60	281.30
3:45	259.60	265.30	15:45	259.60	284.50
4:00	259.60	268.10	16:00	259.60	285.50
4:15	259.60	268.40	16:15	259.60	287.40
4:30	259.60	270.20	16:30	259.60	288.20
4:45	259.60	270.90	16:45	259.60	295.00
5:00	259.60	269.80	17:00	259.60	296.90
5:15	259.60	274.60	17:15	270.60	300.00
5:30	259.60	278.00	17:30	270.60	305.70
6:45	259.60	280.20	17:45	270.60	307.40
6:00	259.60	283.50	18:00	270.60	316.80
6:15	270.60	286.40	18:15	270.60	322.30
6:30	270.60	291.90	18:30	270.60	330.10
6:45	270.60	305.10	18:45	270.60	329.30
7:00	270.60	315.10	19:00	270.60	330.90
7:15	270.60	316.30	19:15	270.60	331.20
7:30	270.60	315.50	19:30	270.60	325.50
7:45	270.60	312.10	19:45	270.60	321.80
8:00	270.60	308.30	20:00	270.60	317.00
8:15	270.60	311.90	20:15	270.60	316.60
8:30	270.60	305.60	20:30	270.60	316.40
8:45	270.60	253.80	20:45	270.60	313.80
9:00	270.60	303.50	21:00	270.60	311.80
9:15	259.60	300.80	21:15	259.60	308.00
9:30	259.60	297.50	21:30	259.60	304.80
9:45	259.60	296.60	21:45	259.60	301.10
10:00	259.60	290.20	22:00	259.60	301.90
10:15	259.60	287.80	22:15	259.60	299.20
10:30	259.60	285.30	22:30	259.60	299.80
10:45	259.60	284.30	22:45	259.60	294.70
11:00	259.60	283.00	23:00	259.60	293.70
11:15	259.60	279.30	23:15	259.60	292.80
11:30	259.60	280.60	23:30	259.60	291.10
11:45	259.60	281.60	23:45	259.60	281.20

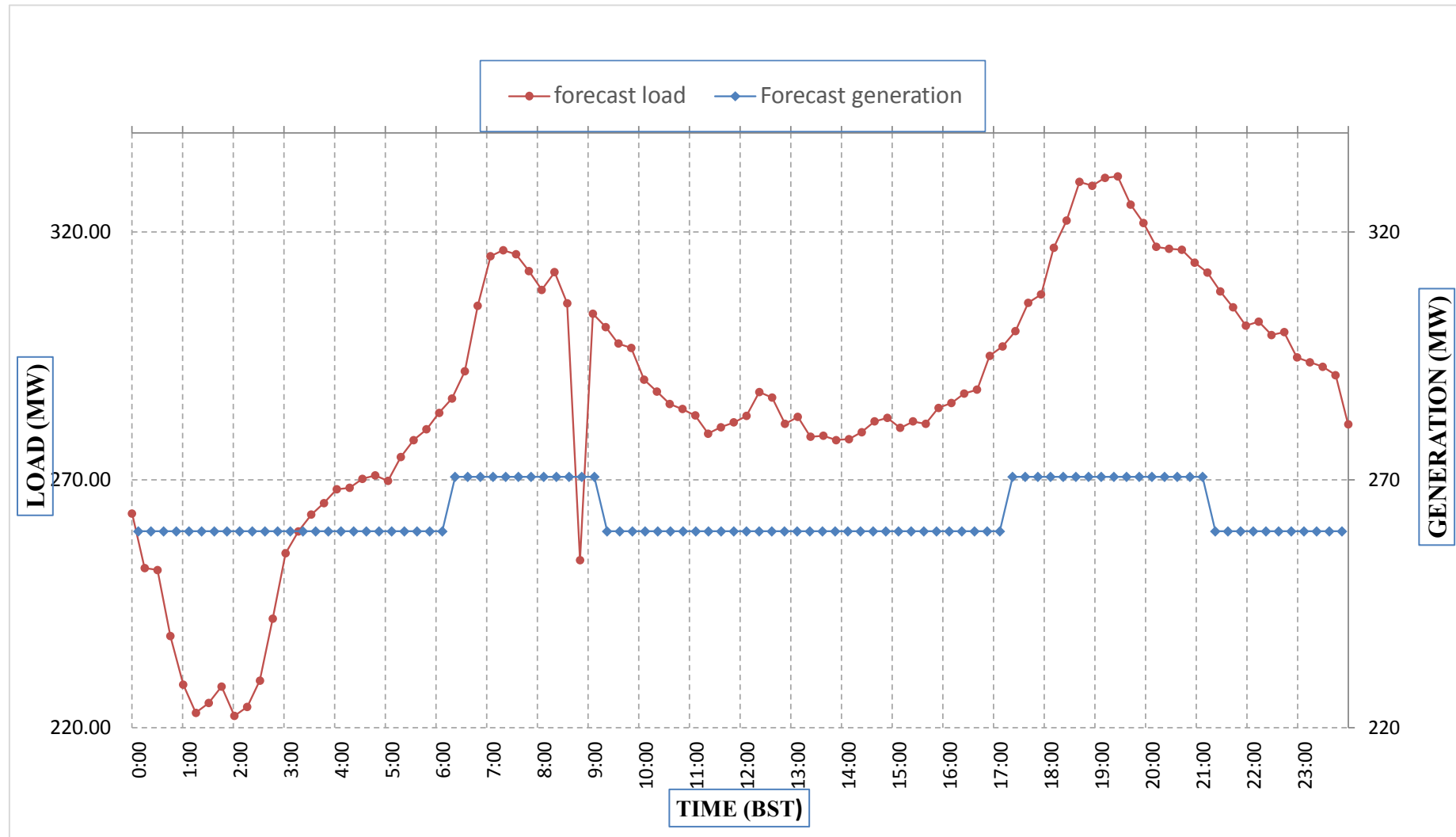
Yours faithfully,
 Kinley Wangmo



Message No.: Enter your message number
 From: Shift In-charge, Control Room

Date: 18-Feb-18
 Time: 10:28

Forecast Generation & Load Forecast for Tomorrow (19-Feb-2018).



Yours faithfully,
 Kinley Wangmo

	MW
Scheduled Peak Generation(19-Feb-2018).	270.60
Forecast Peak Load(19-Feb-2018).	331.20



འབྲུག་གྲོག་ཚེ་ལས་འདི་ན།

Bhutan Power Corporation Ltd.
Bhutan Power System Operator
Thimphu: Bhutan



Message No.: Enter your message number Date: 18-Feb-18
From: Shift In-charge, Control Room Time: 10:19

To
Managing Director, BPC. Email: gemtshering@bpc.bt
Director, O&MD, DGPC. Email: director.umd@drukgreen.com
General Manager, TD, BPC. Email: ktobgye@bpc.bt
Advisor, BPC. Email: bharattamang@bpc.bt

Sub: Forecast Generation and Actual Generation of Dagachhu (17-Feb-2018).

Hours (BST)	Actual Frequency	Forecast Generation	Actual Generation	Hours (BST)	Actual Frequency	Forecast Generation	Actual Generation
0:00	49.99	17.50	17.80	12:00	49.96	17.50	17.88
0:15	49.98	17.50	17.78	12:15	50.02	17.50	17.90
0:30	50.01	17.50	17.79	12:30	50.05	17.50	17.91
0:45	50.02	17.50	17.74	12:45	50.05	17.50	17.92
1:00	50.00	17.50	17.79	13:00	50.07	17.50	17.92
1:15	50.03	17.50	17.89	13:15	50.02	17.50	17.89
1:30	50.01	17.50	17.89	13:30	49.99	17.50	17.90
1:45	50.01	17.50	17.91	13:45	50.01	17.50	17.90
2:00	49.97	17.50	17.86	14:00	49.97	17.50	17.89
2:15	49.98	17.50	17.92	14:15	49.99	17.50	17.91
2:30	49.99	17.50	17.87	14:30	49.99	17.50	17.93
2:45	50.04	17.50	17.88	14:45	49.98	17.50	17.90
3:00	49.99	17.50	17.85	15:00	49.98	17.50	17.90
3:15	49.97	17.50	17.89	15:15	49.92	17.50	17.92
3:30	49.98	17.50	17.88	15:30	49.95	17.50	18.05
3:45	50.00	17.50	17.89	15:45	49.96	17.50	18.05
4:00	49.92	17.50	17.89	16:00	49.94	17.50	18.05
4:15	49.94	17.50	17.90	16:15	49.94	17.50	18.04
4:30	49.99	17.50	17.89	16:30	49.94	17.50	18.05
4:45	49.97	17.50	17.88	16:45	49.99	17.50	18.09
5:00	49.94	17.50	17.90	17:00	50.00	17.50	18.03
5:15	49.91	17.50	17.89	17:15	49.95	17.50	18.03
5:30	49.94	17.50	17.88	17:30	49.93	17.50	18.07
6:45	49.98	17.50	17.88	17:45	50.00	17.50	18.04
6:00	49.97	17.50	17.90	18:00	50.01	17.50	18.08
6:15	49.92	17.50	17.91	18:15	50.01	17.50	18.06
6:30	49.84	17.50	17.97	18:30	49.96	17.50	18.07
6:45	49.96	17.50	17.67	18:45	49.94	17.50	18.06
7:00	49.94	17.50	17.69	19:00	49.95	17.50	18.09
7:15	49.97	17.50	17.91	19:15	49.94	17.50	18.06
7:30	49.93	17.50	17.87	19:30	49.93	17.50	18.03
7:45	49.98	17.50	17.92	19:45	49.94	17.50	18.48
8:00	49.99	17.50	17.90	20:00	49.95	17.50	18.48
8:15	49.97	17.50	17.93	20:15	49.91	17.50	18.50
8:30	49.97	17.50	17.93	20:30	49.88	17.50	18.50
8:45	49.95	17.50	17.91	20:45	49.89	17.50	18.50
9:00	49.96	17.50	17.90	21:00	49.92	17.50	18.50
9:15	49.92	17.50	17.92	21:15	49.99	17.50	18.18
9:30	49.99	17.50	17.88	21:30	50.07	17.50	18.18
9:45	50.03	17.50	17.91	21:45	50.09	17.50	18.21
10:00	49.96	17.50	17.90	22:00	49.93	17.50	18.20
10:15	49.95	17.50	17.91	22:15	49.94	17.50	18.21
10:30	49.91	17.50	17.87	22:30	49.98	17.50	18.21
10:45	49.96	17.50	17.93	22:45	49.99	17.50	18.22
11:00	50.00	17.50	17.88	23:00	49.98	17.50	18.17
11:15	49.96	17.50	17.91	23:15	49.98	17.50	18.20
11:30	49.94	17.50	17.92	23:30	49.95	17.50	18.22
11:45	49.99	17.50	17.88	23:45	49.99	17.50	18.22

Yours faithfully,
Kinley Wangmo



འབྲུག་ལྗོངས་ལས་འདེན་ཁང་།

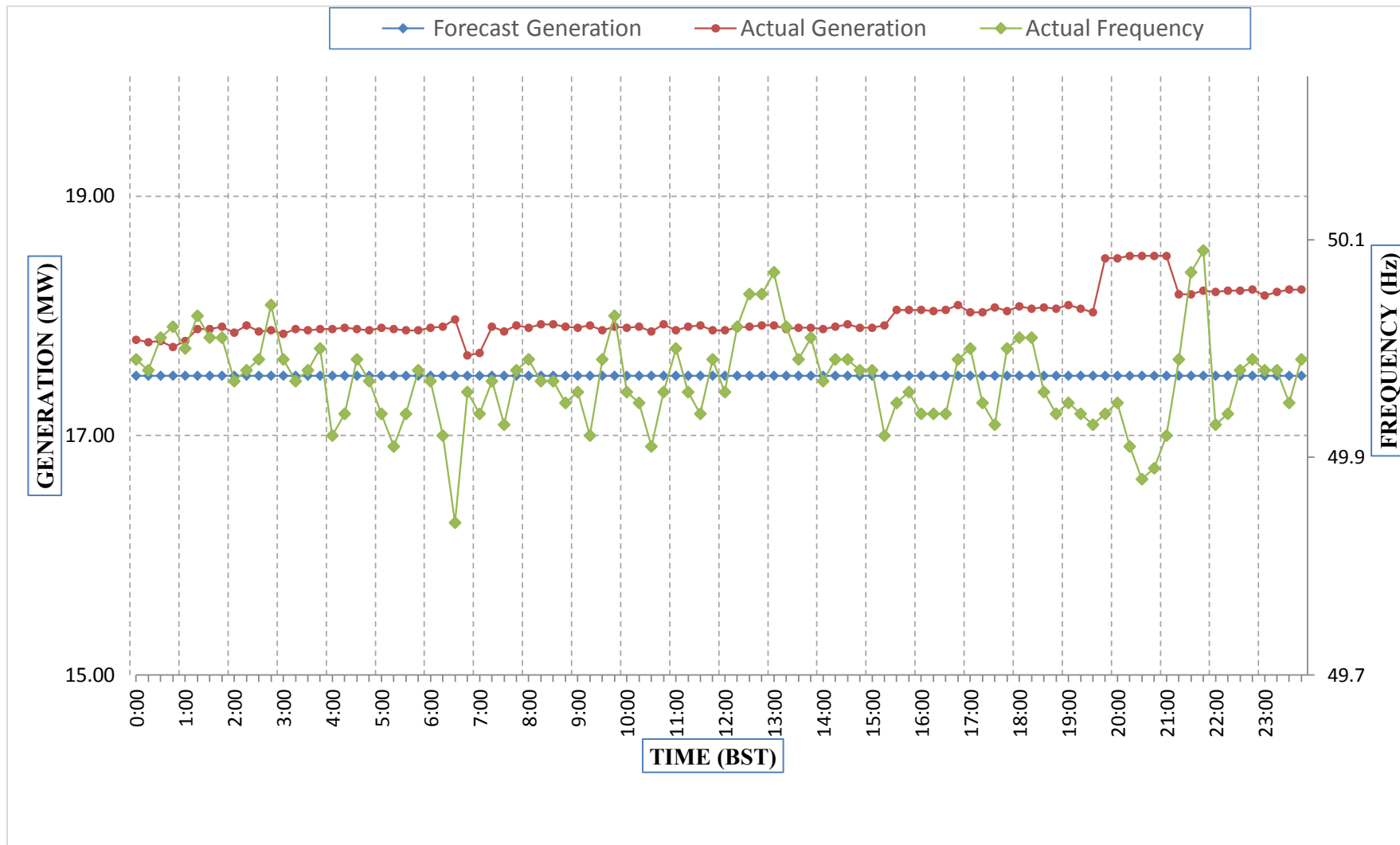
Bhutan Power Corporation Ltd.
Bhutan Power System Operator
Thimphu: Bhutan



Message No.: Enter your message number
From: Shift In-charge, Control Room

Date: 18-Feb-18
Time: 10:19

Forecast Generation & Actual Generation of Dagachhu(17-Feb-2018).



Yours faithfully,
Kinley Wangmo