



འབྲུག་ཤོག་མེ་ལམ་འཛིན།

Bhutan Power Corporation Ltd.
Bhutan Power System Operator
Thimphu: Bhutan



Message No.: Enter your message number
From: Shift In-charge, Control Room

Date: 17-Feb-18
Time: 10:04

To
Managing Director, BPC. Email: gemtshering@bpc.bt
Director, O&MD, DGPC. Email: director.umd@drukgreen.com
General Manager, TD, BPC. Email: ktobgye@bpc.bt
General Manager, DCSD, BPC. Email: sandeeprai@bpc.bt

Sub: **Load Generation Balance Report of Yesterday (16-Feb-2018).**

Hours (BST)	Forecast		Actual		Hours (BST)	Forecast		Actual	
	Generation	Load	Generation	Load		Generation	Load	Generation	Load
0:00	270.80	264.90	256.30	277.85	12:00	270.80	287.80	257.20	252.02
0:15	270.80	264.60	257.21	276.17	12:15	270.80	290.40	256.84	271.61
0:30	270.80	261.30	256.09	267.19	12:30	270.80	289.40	257.89	273.48
0:45	270.80	261.60	256.45	264.98	12:45	270.80	285.60	257.30	268.41
1:00	270.80	262.80	257.02	265.23	13:00	270.80	287.00	257.57	269.91
1:15	270.80	265.60	255.68	264.52	13:15	270.80	280.70	257.59	268.87
1:30	270.80	260.50	257.47	264.96	13:30	270.80	282.80	257.50	267.75
1:45	270.80	262.00	259.05	265.39	13:45	270.80	279.00	257.41	267.79
2:00	270.80	257.90	257.59	263.76	14:00	270.80	281.40	256.71	266.09
2:15	270.80	255.50	258.39	264.73	14:15	270.80	283.40	256.73	266.74
2:30	264.80	237.80	259.63	263.69	14:30	270.80	284.80	257.41	267.77
2:45	253.30	214.60	256.55	262.26	14:45	270.80	286.30	256.96	264.84
3:00	253.30	202.50	258.32	268.21	15:00	270.80	282.90	256.64	269.14
3:15	253.30	201.20	258.43	266.67	15:15	270.80	282.20	259.98	270.91
3:30	253.30	203.30	258.54	265.48	15:30	270.80	284.70	261.63	268.27
3:45	253.30	208.80	258.73	265.41	15:45	270.80	291.20	261.15	265.27
4:00	253.30	228.90	256.22	263.31	16:00	270.80	291.90	261.86	264.76
4:15	253.30	228.60	259.36	267.10	16:15	270.80	292.20	266.00	270.72
4:30	270.80	243.00	258.62	267.88	16:30	270.80	294.60	269.20	264.52
4:45	270.80	243.20	259.13	273.47	16:45	270.80	300.10	268.80	272.66
5:00	270.80	251.50	258.40	272.29	17:00	282.60	303.30	268.11	278.50
5:15	270.80	270.10	258.84	275.95	17:15	282.60	303.60	266.96	288.56
5:30	270.80	283.80	258.21	276.13	17:30	282.60	313.20	265.98	291.41
5:45	270.80	289.50	259.33	276.23	17:45	282.60	320.00	265.84	297.48
6:00	282.60	291.00	260.03	281.42	18:00	282.60	331.40	265.58	301.15
6:15	282.60	295.70	258.84	284.91	18:15	282.60	336.10	269.48	304.32
6:30	282.60	303.60	257.89	289.26	18:30	282.60	346.10	268.41	313.89
6:45	282.60	322.00	258.06	291.65	18:45	282.60	345.80	267.58	312.47
7:00	282.60	335.70	258.20	297.71	19:00	282.60	345.70	269.16	316.86
7:15	282.60	335.90	258.14	306.22	19:15	282.60	343.00	267.67	320.58
7:30	282.60	330.00	256.45	314.52	19:30	282.60	338.70	268.09	311.19
7:45	282.60	322.90	259.26	308.46	19:45	282.60	330.80	268.13	314.80
8:00	282.60	309.50	258.70	315.83	20:00	282.60	323.80	267.63	316.02
8:15	282.60	282.10	257.48	311.77	20:15	282.60	320.20	266.01	314.16
8:30	281.00	252.00	257.43	307.75	20:30	282.60	320.30	266.84	311.45
8:45	282.60	259.30	257.44	311.74	20:45	282.60	316.00	267.40	312.66
9:00	270.80	304.90	257.10	307.42	21:00	270.80	315.70	267.96	307.98
9:15	270.80	298.90	257.27	310.82	21:15	270.80	314.40	267.57	301.54
9:30	270.80	292.80	258.37	307.46	21:30	270.80	306.90	266.13	297.52
9:45	270.80	292.00	259.06	295.73	21:45	270.80	299.60	267.05	295.91
10:00	270.80	288.40	259.02	299.48	22:00	270.80	305.00	267.23	287.70
10:15	270.80	286.20	257.93	308.88	22:15	270.80	305.20	266.02	288.88
10:30	270.80	286.70	257.59	294.13	22:30	270.80	300.40	266.91	292.22
10:45	270.80	282.70	187.97	294.41	22:45	270.80	294.60	266.85	292.45
11:00	270.80	280.30	188.71	288.41	23:00	270.80	289.10	265.71	288.66
11:15	270.80	283.90	188.36	287.64	23:15	270.80	284.80	268.40	281.84
11:30	270.80	287.50	187.95	260.85	23:30	270.80	286.20	267.26	278.84
11:45	270.80	286.10	267.23	255.75	23:45	270.80	277.30	266.54	275.73

Yours faithfully
Kinley Wangmo

Coincidental peak load of Day(Last year):	
272.75 MW	16-Feb-17
Maximum Load till date:	
362.09	14-Nov-17



འབྲུག་གློག་ཤིང་ལས་འཛིན།

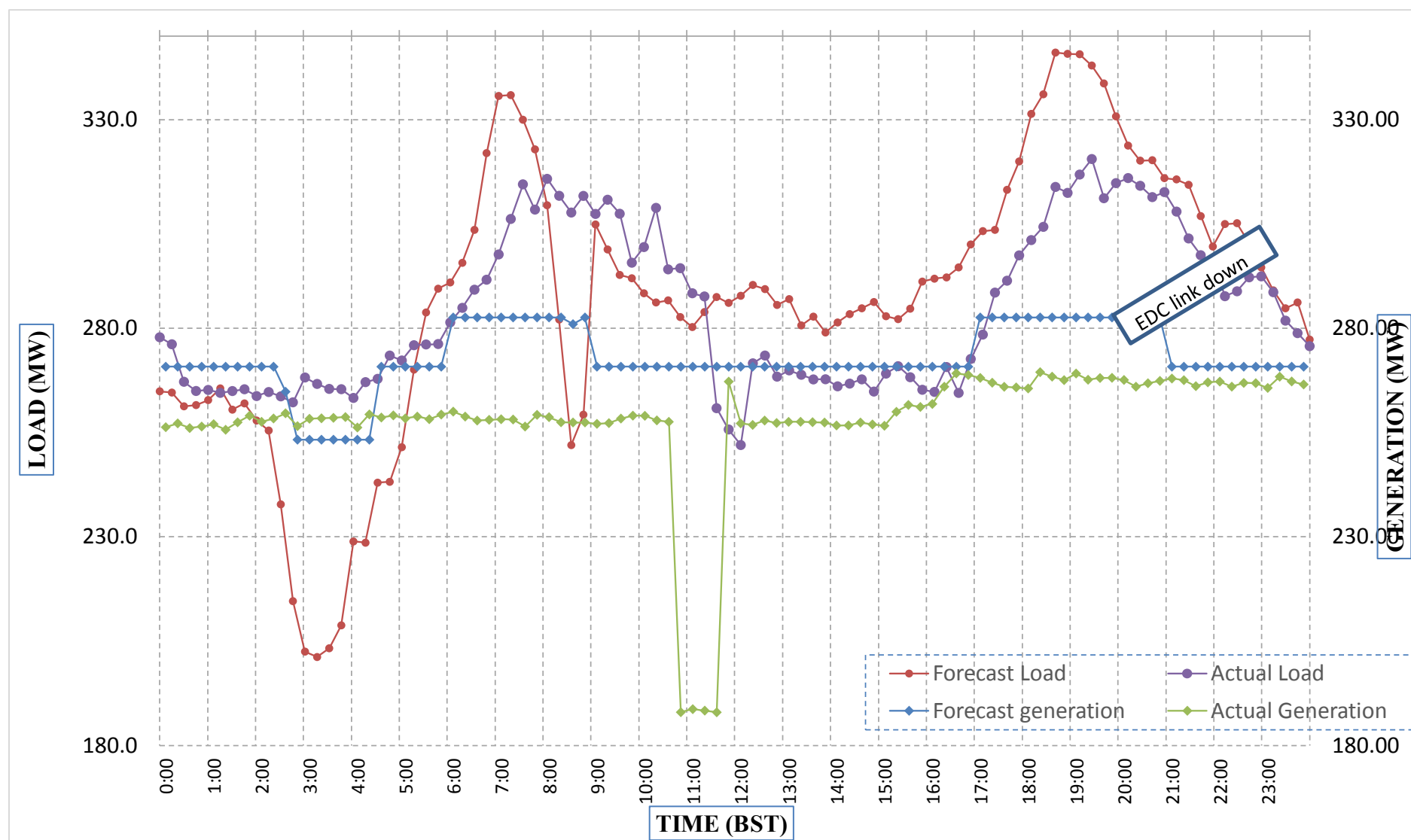
Bhutan Power Corporation Ltd.
Bhutan Power System Operator
Thimphu: Bhutan



Message No.: Enter your message number
From: Shift In-charge, Control Room

Date: 17-Feb-18
Time: 10:04

Forecast Generation & Load with Actual Generation & Load (16-Feb-2018).



Yours faithfully,
Kinley Wangmo

	MW	Coincidental peak load of Day(Last year):	
Peak Co-incident Generation(16-Feb-2018).	269.48	272.75 MW	16-Feb-17
Peak Co-incident Load(16-Feb-2018).	320.58		
		Maximum Load till date:	
		362.09	14-Nov-17

Telephone: +975-02335631; Fax: +975-02335632; Email: bhutansystemoperator@bpc.bt; www.bpc.bt



འབྲུག་གྲོག་མོ་ལས་འཛིན།

Bhutan Power Corporation Ltd.
Bhutan Power System Operator
Thimphu: Bhutan



Message No.: Enter your message number
From: Shift In-charge, Control Room

Date: 17-Feb-18
Time: 10:04

To
Managing Director, BPC. Email: gemtshering@bpc.bt
Director, O&MD, DGPC. Email: director.umd@drukgreen.com
General Manager, TD, BPC. Email: thinleygyeltshen@bpc.bt
General Manager, DCSD, BPC. Email: sandeeprai@bpc.bt

Sub: Load Generation Balance Report of Today (17-Feb-2018).

Hours (BST)	Forecast		Actual	
	Generation	Load	Generation	Load
0:00	252.70	266.70	267.46	266.95
0:15	252.70	265.60	267.76	271.71
0:30	252.70	257.30	267.48	269.79
0:45	252.70	255.30	267.35	265.20
1:00	252.70	254.50	266.41	270.16
1:15	252.70	237.30	266.93	269.50
1:30	252.70	220.30	266.81	271.69
1:45	252.70	221.20	266.80	271.76
2:00	252.70	216.80	267.66	270.28
2:15	252.70	210.30	266.23	269.84
2:30	252.70	207.10	267.73	262.23
2:45	252.70	206.10	267.30	268.02
3:00	252.70	215.40	267.48	268.41
3:15	252.70	230.50	264.97	265.60
3:30	252.70	234.40	263.63	267.90
3:45	252.70	250.40	263.60	271.56
4:00	252.70	262.40	263.78	269.65
4:15	252.70	263.30	261.89	271.60
4:30	252.70	270.80	260.80	268.36
4:45	252.70	271.40	261.91	265.39
5:00	252.70	271.10	259.95	266.09
5:15	252.70	278.40	259.14	261.27
5:30	252.70	285.90	259.30	262.66
5:45	252.70	287.70	259.48	266.48
6:00	265.40	286.70	261.42	269.15
6:15	265.40	291.40	259.86	277.61
6:30	265.40	300.00	258.94	274.36
6:45	265.40	316.80	259.70	278.92
7:00	265.40	330.20	260.27	289.21
7:15	265.40	329.60	259.66	292.09
7:30	265.40	325.00	259.84	297.02
7:45	265.40	321.60	260.30	296.43
8:00	265.40	312.80	260.09	298.08
8:15	265.40	288.40	259.77	301.04
8:30	265.40	258.10	260.77	298.91
8:45	265.40	260.00	259.41	295.11
9:00	252.70	300.50	260.63	307.96

Yours faithfully,
Kinley Wangmo

Coincidental peak load of Day(Last year):	
298.81	17-Feb-17

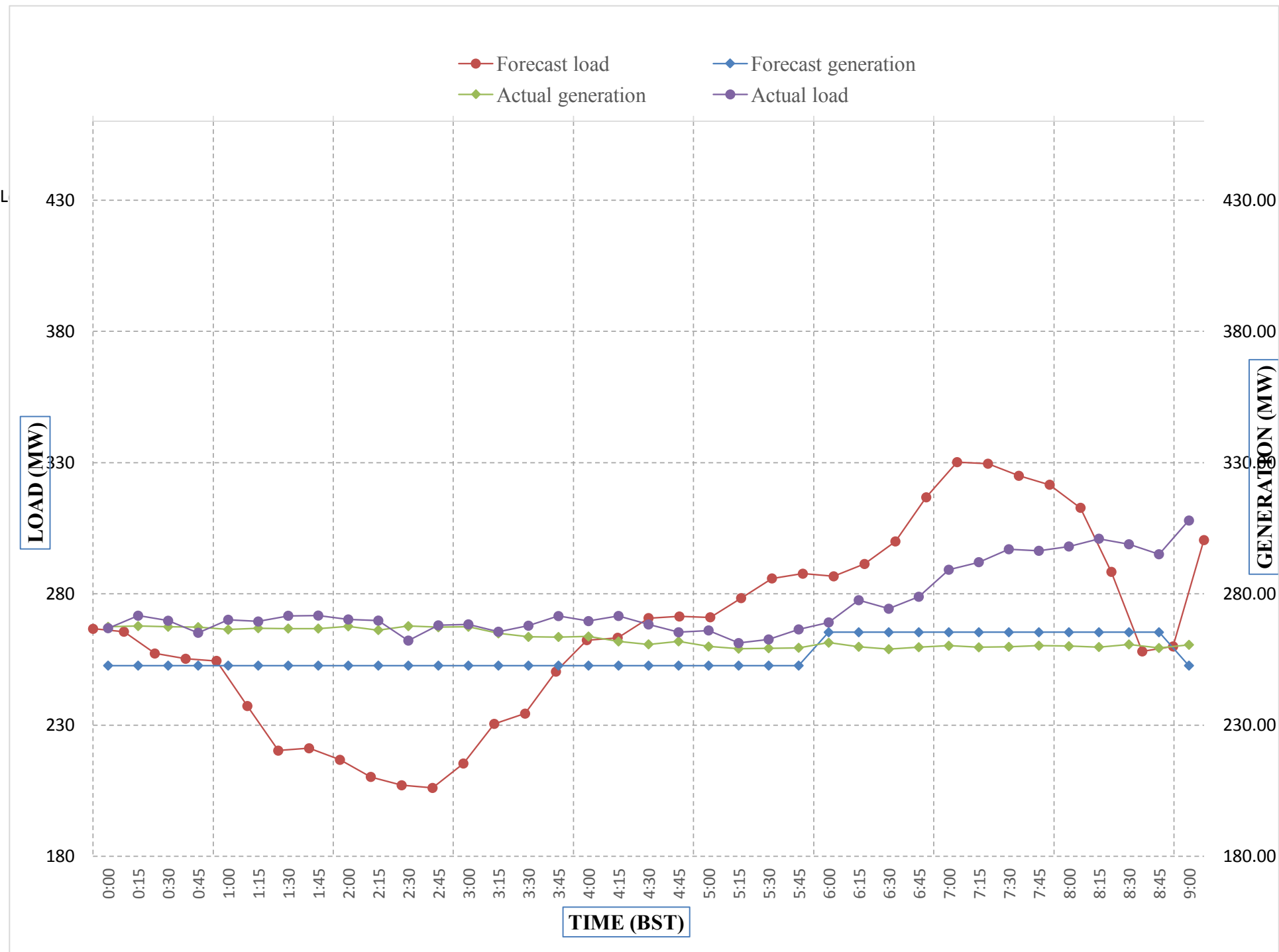
Maximum Load till date:	
362.09	14-Nov-17



Message No.: Enter your message number
 From: Shift In-charge, Control Room

2/17/2018 10:04 17-Feb-18
 2/17/2018 10:04 10:04

Forecast Generation & Load with Actual Generation & Load of Today from 00:00hrs to 09:00hrs(17-Feb-2018).

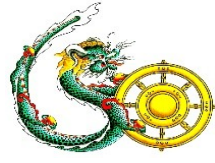


Yours faithfully
 Kinley Wangmo

Coincidental peak load of Day(Last)	
272.75	17-Feb-17
Maximum Load till date:	
269.484375	30-Oct-00



འབྲུག་གྲོག་ལེན་ལེ་སྒོམ་ལྷན་ཁག།
Bhutan Power Corporation Ltd.
Bhutan Power System Operator
 Thimphu: Bhutan



Message No.: Enter your message number **Date:** 17-Feb-18
From: Shift In-charge, Control Room **Time:** 10:04

To
 Managing Director, BPC. Email: gemtshering@bpc.bt
 Director, O&MD, DGPC. Email: director.omid@drukgreen.com
 General Manager, TD, BPC. Email: ktobgye@bpc.bt
 Advisor, BPC. Email: bharattamang@bpc.bt

Sub: Load Generation Balance Report of Tomorrow (18-Feb-2018).

Hours (BST)	Forecast		Hours (BST)	Forecast	
	Generation	Load		Generation	Load
0:00	251.50	260.60	12:00	251.50	280.40
0:15	251.50	245.00	12:15	251.50	285.40
0:30	251.50	244.70	12:30	251.50	285.60
0:45	251.50	230.30	12:45	251.50	281.70
1:00	251.50	217.70	13:00	251.50	282.50
1:15	251.50	209.40	13:15	251.50	278.60
1:30	251.50	211.10	13:30	251.50	280.30
1:45	251.50	216.20	13:45	251.50	276.60
2:00	251.50	211.90	14:00	251.50	278.10
2:15	251.50	214.10	14:15	251.50	280.50
2:30	251.50	220.60	14:30	251.50	281.50
2:45	251.50	234.40	14:45	251.50	282.90
3:00	251.50	252.40	15:00	251.50	279.30
3:15	251.50	256.20	15:15	251.50	279.80
3:30	251.50	257.00	15:30	251.50	279.00
3:45	251.50	262.00	15:45	251.50	283.10
4:00	251.50	266.60	16:00	251.50	284.30
4:15	251.50	267.20	16:15	251.50	286.10
4:30	251.50	270.00	16:30	251.50	285.10
4:45	251.50	272.50	16:45	251.50	293.50
5:00	251.50	270.20	17:00	251.50	295.80
5:15	251.50	277.00	17:15	261.90	298.70
5:30	251.50	283.10	17:30	261.90	306.90
6:45	251.50	285.40	17:45	261.90	312.50
6:00	251.50	285.30	18:00	261.90	321.40
6:15	261.90	288.10	18:15	261.90	325.80
6:30	261.90	296.30	18:30	261.90	335.50
6:45	261.90	310.30	18:45	261.90	335.00
7:00	261.90	322.00	19:00	261.90	335.40
7:15	261.90	325.10	19:15	261.90	336.10
7:30	261.90	322.10	19:30	261.90	328.60
7:45	261.90	319.10	19:45	261.90	325.20
8:00	261.90	313.60	20:00	261.90	320.60
8:15	261.90	314.60	20:15	261.90	318.30
8:30	261.90	299.20	20:30	261.90	318.90
8:45	261.90	251.00	20:45	261.90	315.80
9:00	261.90	305.60	21:00	261.90	314.60
9:15	251.50	302.30	21:15	251.50	311.90
9:30	251.50	294.90	21:30	251.50	307.80
9:45	251.50	295.00	21:45	251.50	303.10
10:00	251.50	293.60	22:00	251.50	305.80
10:15	251.50	292.30	22:15	251.50	305.60
10:30	251.50	288.30	22:30	251.50	306.10
10:45	251.50	286.10	22:45	251.50	300.40
11:00	251.50	282.90	23:00	251.50	299.90
11:15	251.50	281.00	23:15	251.50	299.60
11:30	251.50	281.50	23:30	251.50	296.50
11:45	251.50	278.50	23:45	251.50	281.60

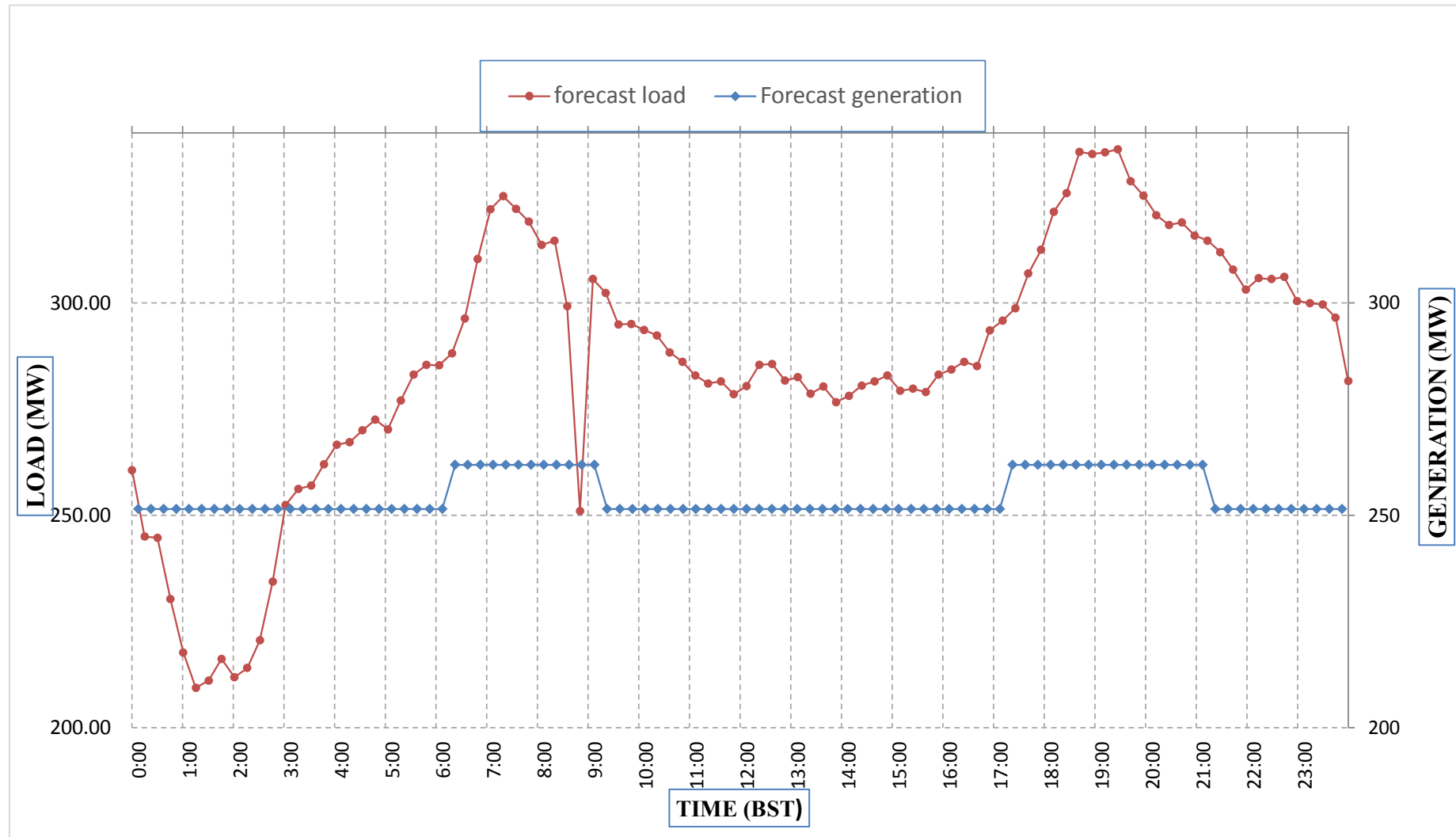
Yours faithfully,
 Kinley Wangmo



Message No.: Enter your message number
 From: Shift In-charge, Control Room

Date: 17-Feb-18
 Time: 10:04

Forecast Generation & Load Forecast for Tomorrow (18-Feb-2018).



Yours faithfully,
 Kinley Wangmo

	MW
Scheduled Peak Generation(18-Feb-2018).	261.90
Forecast Peak Load(18-Feb-2018).	336.10



འབྲུག་གྲོག་ཚེ་ལས་འདི་ན།

Bhutan Power Corporation Ltd.
Bhutan Power System Operator
Thimphu: Bhutan



Message No.: Enter your message number Date: 17-Feb-18
From: Shift In-charge, Control Room Time: 10:04

To
Managing Director, BPC. Email: gemtshering@bpc.bt
Director, O&MD, DGPC. Email: director.umd@drukgreen.com
General Manager, TD, BPC. Email: ktobgye@bpc.bt
Advisor, BPC. Email: bharattamang@bpc.bt

Sub: Forecast Generation and Actual Generation of Dagachhu (16-Feb-2018).

Hours (BST)	Actual Frequency	Forecast Generation	Actual Generation	Hours (BST)	Actual Frequency	Forecast Generation	Actual Generation
0:00	49.99	18.00	17.48	12:00	49.98	18.00	18.20
0:15	49.96	18.00	17.48	12:15	50.01	18.00	18.20
0:30	50.00	18.00	17.47	12:30	49.98	18.00	18.21
0:45	50.00	18.00	17.69	12:45	50.01	18.00	18.18
1:00	50.01	18.00	17.98	13:00	50.12	18.00	18.19
1:15	50.03	18.00	17.97	13:15	50.05	18.00	18.17
1:30	50.00	18.00	18.18	13:30	50.03	18.00	18.17
1:45	49.99	18.00	18.21	13:45	50.03	18.00	18.19
2:00	50.01	18.00	18.20	14:00	49.99	18.00	18.20
2:15	50.01	18.00	18.21	14:15	49.99	18.00	18.16
2:30	49.99	18.00	18.23	14:30	49.97	18.00	18.20
2:45	50.01	18.00	18.21	14:45	49.99	18.00	18.20
3:00	50.00	18.00	18.20	15:00	49.98	18.00	18.20
3:15	50.00	18.00	18.19	15:15	49.94	18.00	18.18
3:30	49.99	18.00	18.19	15:30	49.95	18.00	18.20
3:45	50.03	18.00	18.19	15:45	49.94	18.00	18.21
4:00	49.97	18.00	18.19	16:00	50.00	18.00	18.17
4:15	50.00	18.00	18.20	16:15	49.93	18.00	18.20
4:30	49.98	18.00	18.20	16:30	49.94	18.00	18.20
4:45	49.98	18.00	18.52	16:45	50.00	18.00	18.19
5:00	49.96	18.00	18.49	17:00	50.01	18.00	18.18
5:15	49.94	18.00	18.48	17:15	49.98	18.00	18.22
5:30	49.96	18.00	18.49	17:30	49.97	18.00	18.19
6:45	49.95	18.00	18.49	17:45	50.02	18.00	18.19
6:00	49.97	18.00	18.51	18:00	50.01	18.00	18.20
6:15	49.92	18.00	18.51	18:15	49.99	18.00	18.20
6:30	49.91	18.00	18.32	18:30	49.95	18.00	18.19
6:45	49.91	18.00	18.38	18:45	49.96	18.00	17.99
7:00	49.95	18.00	18.31	19:00	50.01	18.00	18.00
7:15	49.99	18.00	18.20	19:15	50.02	18.00	18.01
7:30	49.99	18.00	18.21	19:30	50.02	18.00	18.01
7:45	50.00	18.00	18.23	19:45	50.02	18.00	18.00
8:00	49.98	18.00	18.22	20:00	50.04	18.00	18.00
8:15	49.95	18.00	18.19	20:15	49.96	18.00	17.70
8:30	49.93	18.00	18.19	20:30	49.95	18.00	17.71
8:45	49.96	18.00	18.20	20:45	49.97	18.00	17.66
9:00	49.84	18.00	18.18	21:00	49.89	18.00	17.70
9:15	49.95	18.00	18.21	21:15	49.94	18.00	17.68
9:30	49.99	18.00	18.21	21:30	49.98	18.00	17.68
9:45	49.95	18.00	18.20	21:45	50.02	18.00	17.69
10:00	49.87	18.00	18.23	22:00	49.87	18.00	17.66
10:15	49.92	18.00	18.21	22:15	49.95	18.00	17.69
10:30	49.93	18.00	18.19	22:30	49.93	18.00	17.68
10:45	49.99	18.00	18.21	22:45	49.98	18.00	17.65
11:00	49.94	18.00	18.22	23:00	49.98	18.00	17.68
11:15	49.98	18.00	18.19	23:15	49.96	18.00	17.71
11:30	49.96	18.00	18.19	23:30	49.99	18.00	17.68
11:45	50.02	18.00	18.17	23:45	50.03	18.00	17.67

Yours faithfully,
Kinley Wangmo



འབྲུག་རྒྱལ་ཁོག་མེ་ལམ་འཛིན།

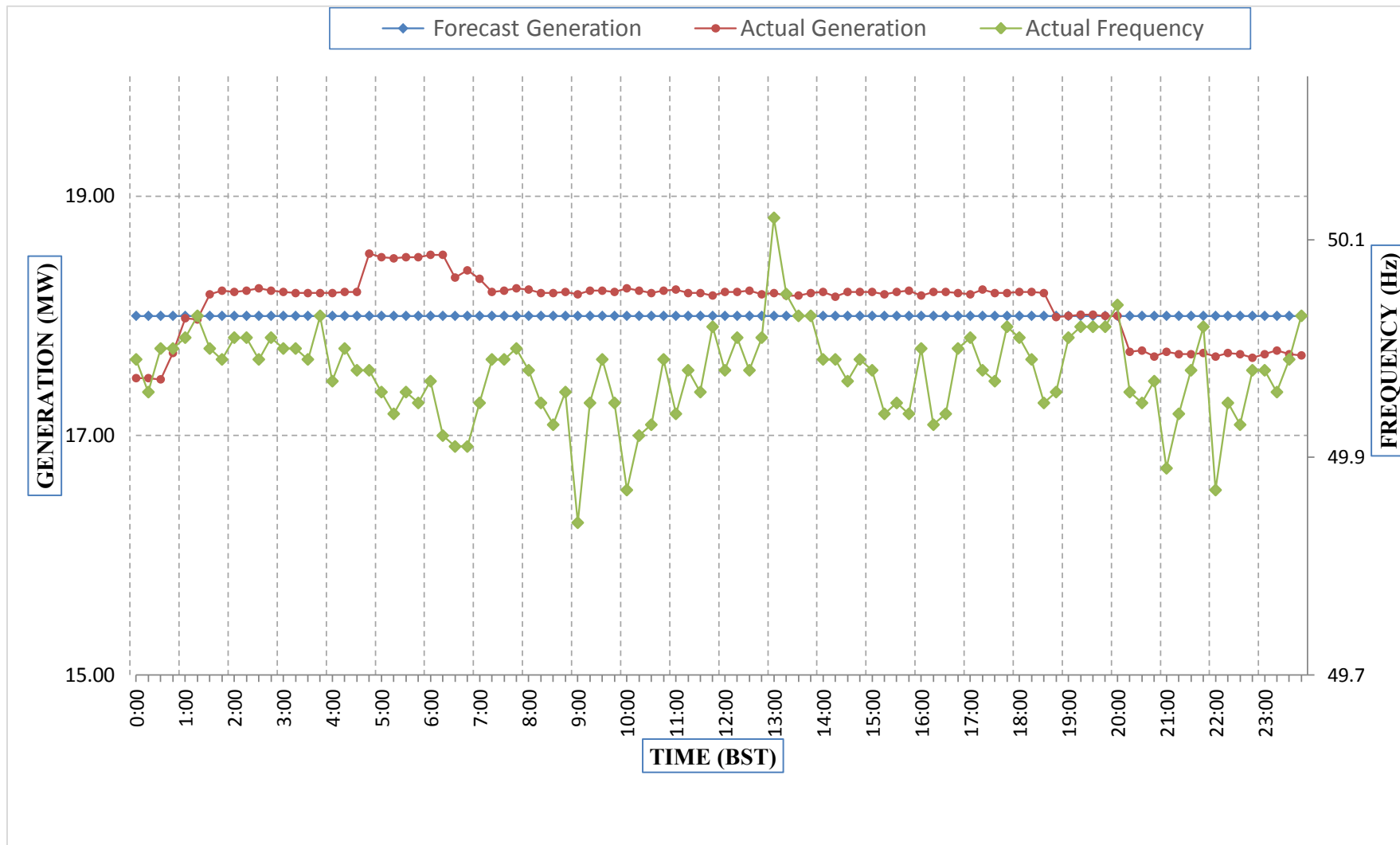
Bhutan Power Corporation Ltd.
Bhutan Power System Operator
Thimphu: Bhutan



Message No.: Enter your message number
From: Shift In-charge, Control Room

Date: 17-Feb-18
Time: 10:04

Forecast Generation & Actual Generation of Dagachhu(16-Feb-2018).



Yours faithfully,
Kinley Wangmo