



འབྲུག་ཤོག་མེ་ལམ་འཛིན།

Bhutan Power Corporation Ltd.  
Bhutan Power System Operator  
Thimphu: Bhutan



Message No.: Enter your message number  
From: Shift In-charge, Control Room

Date: 16-Feb-18  
Time: 11:17

To  
Managing Director, BPC. Email: gemtshering@bpc.bt  
Director, O&MD, DGPC. Email: director.umd@drukgreen.com  
General Manager, TD, BPC. Email: ktobgye@bpc.bt  
General Manager, DCSD, BPC. Email: sandeeprai@bpc.bt

Sub: **Load Generation Balance Report of Yesterday (15-Feb-2018).**

Hours (BST)	Forecast		Actual		Hours (BST)	Forecast		Actual	
	Generation	Load	Generation	Load		Generation	Load	Generation	Load
0:00	299.20	268.80	411.41	270.59	12:00	184.20	291.20	190.68	290.85
0:15	299.20	268.60	409.77	272.66	12:15	184.20	292.60	190.88	292.99
0:30	299.20	264.40	410.61	269.63	12:30	184.20	290.40	189.83	291.70
0:45	299.20	265.80	410.55	271.55	12:45	184.20	282.10	189.36	288.77
1:00	299.20	262.10	411.52	263.48	13:00	184.20	281.60	190.38	283.28
1:15	299.20	260.50	456.45	265.99	13:15	184.20	274.50	189.02	285.02
1:30	299.20	235.20	459.98	270.37	13:30	184.20	274.50	188.95	287.94
1:45	299.20	229.30	457.58	268.28	13:45	184.20	269.50	190.46	281.40
2:00	299.20	221.90	457.20	265.80	14:00	184.20	272.00	189.68	280.63
2:15	299.20	216.50	459.00	263.18	14:15	184.20	273.70	189.34	278.52
2:30	299.20	206.80	459.51	264.89	14:30	184.20	276.90	190.01	281.02
2:45	299.20	206.30	459.45	261.83	14:45	184.20	277.70	190.63	282.27
3:00	299.20	209.90	459.41	264.75	15:00	184.20	276.50	189.24	280.24
3:15	299.20	223.70	459.59	264.36	15:15	195.20	276.00	189.06	280.34
3:30	299.20	234.90	459.48	268.21	15:30	195.20	278.30	189.99	277.70
3:45	299.20	244.60	459.29	265.34	15:45	195.20	284.20	189.94	282.56
4:00	299.20	266.50	459.40	267.03	16:00	195.20	284.90	190.06	286.55
4:15	299.20	266.00	449.09	263.98	16:15	195.20	284.80	188.60	283.57
4:30	299.20	270.30	447.97	271.92	16:30	195.20	287.50	212.54	284.36
4:45	299.20	275.10	448.08	275.02	16:45	195.20	292.60	259.74	290.99
5:00	299.20	278.40	447.45	268.25	17:00	195.20	295.60	264.21	283.81
5:15	299.20	282.90	410.16	272.01	17:15	195.20	298.60	259.52	289.64
5:30	299.20	285.30	318.92	267.24	17:30	195.20	306.80	259.51	299.50
5:45	299.20	285.80	302.09	272.27	17:45	195.20	315.10	270.15	302.09
6:00	299.20	286.50	301.96	269.02	18:00	195.20	325.50	266.89	311.63
6:15	310.10	290.50	289.34	277.57	18:15	195.20	331.40	266.02	317.38
6:30	310.10	297.60	268.39	281.38	18:30	195.20	340.80	265.79	323.53
6:45	310.10	311.30	267.00	293.80	18:45	287.10	340.90	264.33	318.46
7:00	310.10	322.80	278.06	309.97	19:00	287.10	341.70	263.91	322.28
7:15	310.10	325.50	281.82	313.16	19:15	287.10	339.60	261.52	324.73
7:30	310.10	325.90	261.74	306.20	19:30	287.10	334.40	262.20	312.22
7:45	310.10	329.30	275.43	309.40	19:45	287.10	326.70	260.41	311.30
8:00	310.10	321.40	277.16	296.30	20:00	287.10	326.70	259.73	309.99
8:15	310.10	323.40	228.61	297.02	20:15	287.10	322.90	259.59	315.09
8:30	310.10	308.40	187.24	294.51	20:30	287.10	321.30	260.04	315.48
8:45	195.20	247.00	189.45	289.23	20:45	287.10	315.00	259.48	313.62
9:00	195.20	312.10	189.00	287.14	21:00	287.10	314.30	259.31	316.49
9:15	184.20	303.60	189.41	290.36	21:15	276.20	312.20	257.15	316.12
9:30	184.20	295.20	189.71	292.30	21:30	276.20	305.40	257.87	316.61
9:45	184.20	293.70	191.11	293.56	21:45	276.20	295.20	258.91	316.15
10:00	184.20	291.70	190.23	296.57	22:00	276.20	290.90	257.26	311.13
10:15	184.20	288.50	189.98	291.73	22:15	276.20	289.40	257.19	302.92
10:30	184.20	288.30	191.13	284.51	22:30	276.20	285.90	258.72	299.56
10:45	184.20	286.10	191.25	282.41	22:45	276.20	281.80	257.92	295.34
11:00	184.20	285.60	190.29	289.54	23:00	276.20	275.10	257.31	290.83
11:15	184.20	288.60	191.04	289.76	23:15	276.20	276.00	257.47	285.24
11:30	184.20	292.60	190.45	291.55	23:30	276.20	276.50	257.45	284.58
11:45	184.20	292.70	189.60	286.15	23:45	276.20	272.70	257.01	283.97

Yours faithfully  
Pema Lhamo

Coincidental peak load of Day(Last year):	
288.75 MW	15-Feb-17
Maximum Load till date:	
362.09	14-Nov-17



འབྲུག་གློག་ཁེ་ལས་འཛིན།

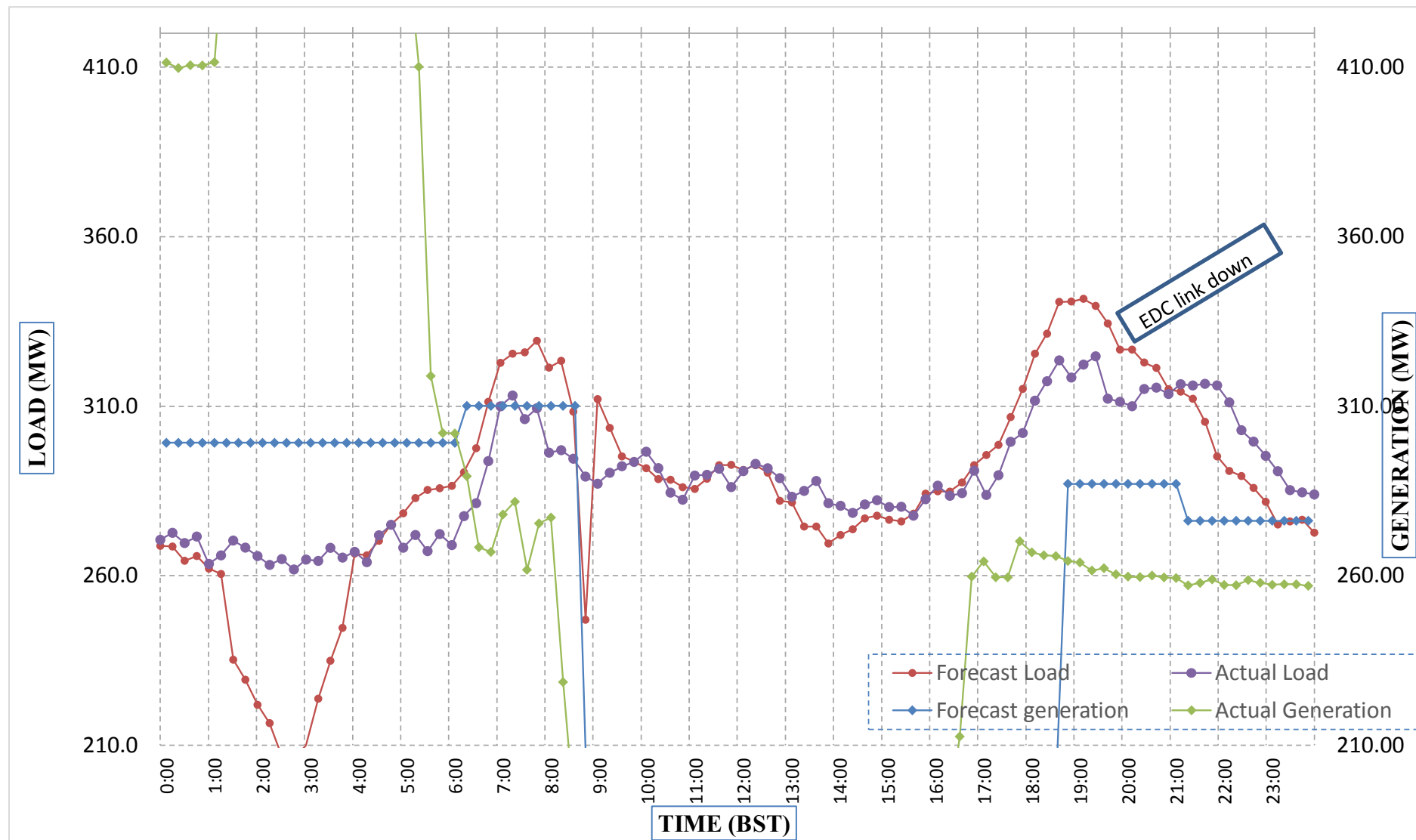
Bhutan Power Corporation Ltd.  
Bhutan Power System Operator  
Thimphu: Bhutan



Message No.: Enter your message number  
From: Shift In-charge, Control Room

Date: 16-Feb-18  
Time: 11:17

Forecast Generation & Load with Actual Generation & Load (15-Feb-2018).



Yours faithfully,  
Pema Lhamo

	MW	Coincidental peak load of Day(Last year):	
Peak Co-incident Generation(15-Feb-2018).	459.98	288.75 MW	15-Feb-17
Peak Co-incident Load(15-Feb-2018).	324.73		
		Maximum Load till date:	
		362.09	14-Nov-17

Telephone: +975-02335631; Fax: +975-02335632; Email: bhutansystemoperator@bpc.bt; www.bpc.bt



འབྲུག་གློག་ལེ་ལམ་འཛིན།

Bhutan Power Corporation Ltd.  
Bhutan Power System Operator  
Thimphu: Bhutan



Message No.: Enter your message number  
From: Shift In-charge, Control Room

Date: 16-Feb-18  
Time: 11:17

To  
Managing Director, BPC. Email: gemtshering@bpc.bt  
Director, O&MD, DGPC. Email: director.umd@drukgreen.com  
General Manager, TD, BPC. Email: thinleygyeltshen@bpc.bt  
General Manager, DCSD, BPC. Email: sandeeprai@bpc.bt

Sub: Load Generation Balance Report of Today (16-Feb-2018).

Hours (BST)	Forecast		Actual	
	Generation	Load	Generation	Load
0:00	270.80	264.90	256.30	277.85
0:15	270.80	264.60	257.21	276.17
0:30	270.80	261.30	256.09	267.19
0:45	270.80	261.60	256.45	264.98
1:00	270.80	262.80	257.02	265.23
1:15	270.80	265.60	255.68	264.52
1:30	270.80	260.50	257.47	264.96
1:45	270.80	262.00	259.05	265.39
2:00	270.80	257.90	257.59	263.76
2:15	270.80	255.50	258.39	264.73
2:30	264.80	237.80	259.63	263.69
2:45	253.30	214.60	256.55	262.26
3:00	253.30	202.50	258.32	268.21
3:15	253.30	201.20	258.43	266.67
3:30	253.30	203.30	258.54	265.48
3:45	253.30	208.80	258.73	265.41
4:00	253.30	228.90	256.22	263.31
4:15	253.30	228.60	259.36	267.10
4:30	270.80	243.00	258.62	267.88
4:45	270.80	243.20	259.13	273.47
5:00	270.80	251.50	258.40	272.29
5:15	270.80	270.10	258.84	275.95
5:30	270.80	283.80	258.21	276.13
5:45	270.80	289.50	259.33	276.23
6:00	282.60	291.00	260.03	281.42
6:15	282.60	295.70	258.84	284.91
6:30	282.60	303.60	257.89	289.26
6:45	282.60	322.00	258.06	291.65
7:00	282.60	335.70	258.20	297.71
7:15	282.60	335.90	258.14	306.22
7:30	282.60	330.00	256.45	314.52
7:45	282.60	322.90	259.26	308.46
8:00	282.60	309.50	258.70	315.83
8:15	282.60	282.10	257.48	311.77
8:30	281.00	252.00	257.43	307.75
8:45	282.60	259.30	257.44	311.74
9:00	270.80	304.90	257.10	307.42

Yours faithfully,  
Pema Lhamo

Coincidental peak load of Day(Last year):	
298.81	16-Feb-17

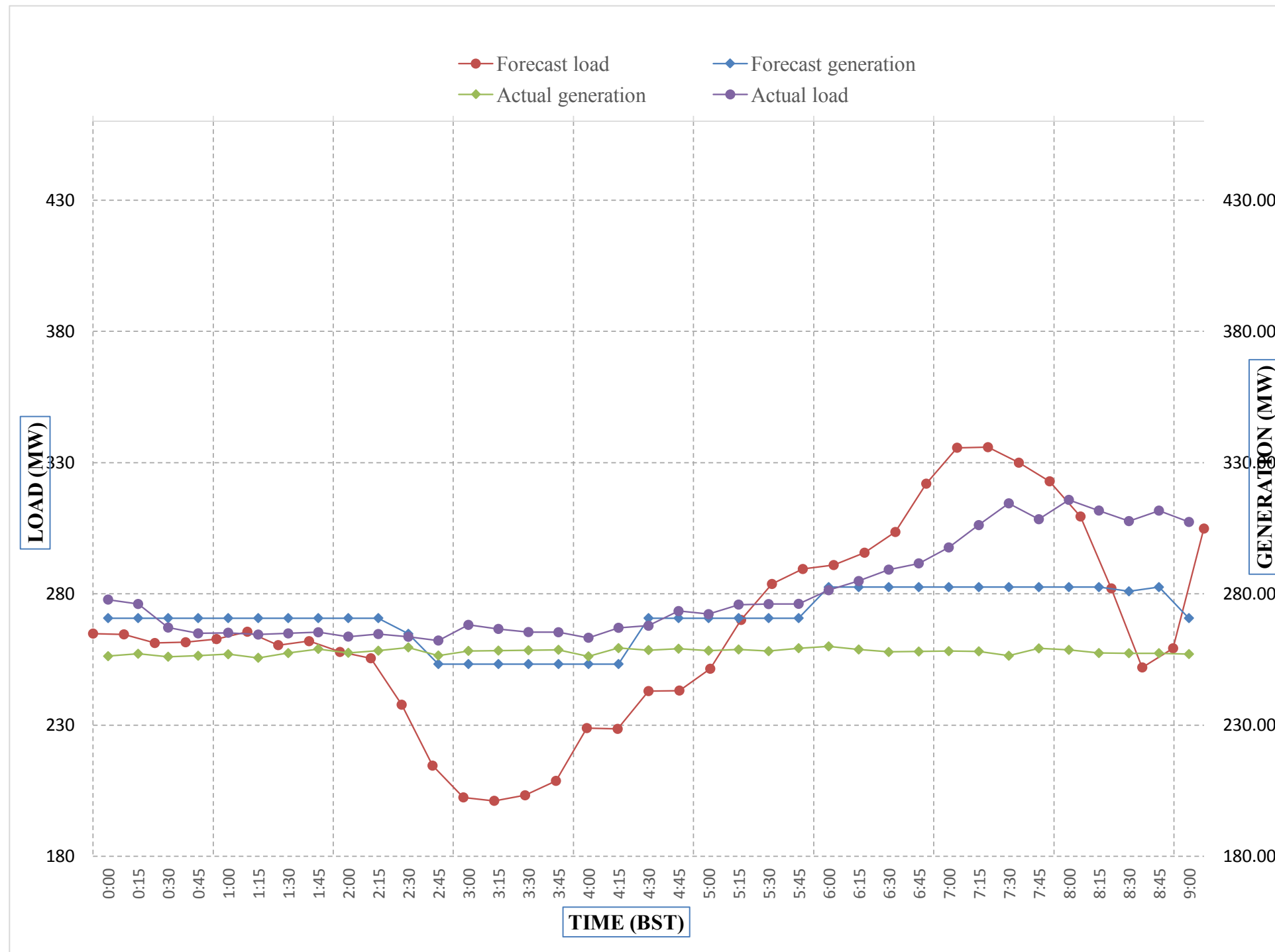
Maximum Load till date:	
362.09	14-Nov-17



Message No.: Enter your message number  
 From: Shift In-charge, Control Room

Date: 16-Feb-18  
 Time: 11:17

Forecast Generation & Load with Actual Generation & Load of Today from 00:00hrs to 09:00hrs(16-Feb-2018).

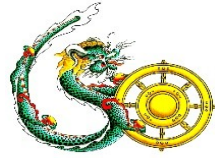


Yours faithfully  
 Pema Lhamo

<b>Coincidental peak load of Day(Last)</b>	
272.75	16-Feb-17
<b>Maximum Load till date:</b>	
266.023438	12-Nov-00



འབྲུག་གྲོག་ལེ་ལས་ལཱ་ལྷན་ཁག།  
**Bhutan Power Corporation Ltd.**  
**Bhutan Power System Operator**  
**Thimphu: Bhutan**



**Message No.:** Enter your message number **Date:** 16-Feb-18  
**From:** Shift In-charge, Control Room **Time:** 11:17

**To**  
 Managing Director, BPC. Email: gemtshering@bpc.bt  
 Director, O&MD, DGPC. Email: director.omid@drukgreen.com  
 General Manager, TD, BPC. Email: ktobgye@bpc.bt  
 Advisor, BPC. Email: bharattamang@bpc.bt

**Sub:** Load Generation Balance Report of Tomorrow (17-Feb-2018).

Hours (BST)	Forecast		Hours (BST)	Forecast	
	Generation	Load		Generation	Load
0:00	252.70	266.70	12:00	252.70	288.20
0:15	252.70	265.60	12:15	252.70	290.20
0:30	252.70	257.30	12:30	252.70	289.30
0:45	252.70	255.30	12:45	252.70	286.50
1:00	252.70	254.50	13:00	252.70	286.20
1:15	252.70	237.30	13:15	252.70	282.80
1:30	252.70	220.30	13:30	252.70	284.50
1:45	252.70	221.20	13:45	252.70	279.20
2:00	252.70	216.80	14:00	252.70	281.90
2:15	252.70	210.30	14:15	252.70	284.70
2:30	252.70	207.10	14:30	252.70	284.80
2:45	252.70	206.10	14:45	252.70	286.80
3:00	252.70	215.40	15:00	252.70	282.20
3:15	252.70	230.50	15:15	252.70	282.40
3:30	252.70	234.40	15:30	252.70	283.80
3:45	252.70	250.40	15:45	252.70	290.00
4:00	252.70	262.40	16:00	252.70	291.50
4:15	252.70	263.30	16:15	252.70	291.40
4:30	252.70	270.80	16:30	252.70	293.40
4:45	252.70	271.40	16:45	252.70	299.00
5:00	252.70	271.10	17:00	265.40	299.50
5:15	252.70	278.40	17:15	265.40	302.10
5:30	252.70	285.90	17:30	265.40	311.60
6:45	252.70	287.70	17:45	265.40	316.90
6:00	265.40	286.70	18:00	265.40	328.20
6:15	265.40	291.40	18:15	265.40	332.20
6:30	265.40	300.00	18:30	265.40	341.50
6:45	265.40	316.80	18:45	265.40	340.50
7:00	265.40	330.20	19:00	265.40	340.90
7:15	265.40	329.60	19:15	265.40	339.60
7:30	265.40	325.00	19:30	265.40	333.40
7:45	265.40	321.60	19:45	265.40	327.00
8:00	265.40	312.80	20:00	265.40	321.40
8:15	265.40	288.40	20:15	265.40	319.00
8:30	265.40	258.10	20:30	265.40	319.70
8:45	265.40	260.00	20:45	265.40	317.50
9:00	252.70	300.50	21:00	265.40	317.50
9:15	252.70	298.30	21:15	265.40	314.40
9:30	252.70	292.80	21:30	265.40	310.00
9:45	252.70	293.00	21:45	265.40	304.90
10:00	252.70	291.40	22:00	265.40	307.30
10:15	252.70	287.40	22:15	265.40	307.90
10:30	252.70	285.30	22:30	265.40	307.50
10:45	252.70	282.90	22:45	265.40	300.60
11:00	252.70	282.20	23:00	265.40	301.10
11:15	252.70	284.40	23:15	265.40	302.40
11:30	252.70	288.40	23:30	265.40	299.20
11:45	252.70	286.10	23:45	265.40	282.30

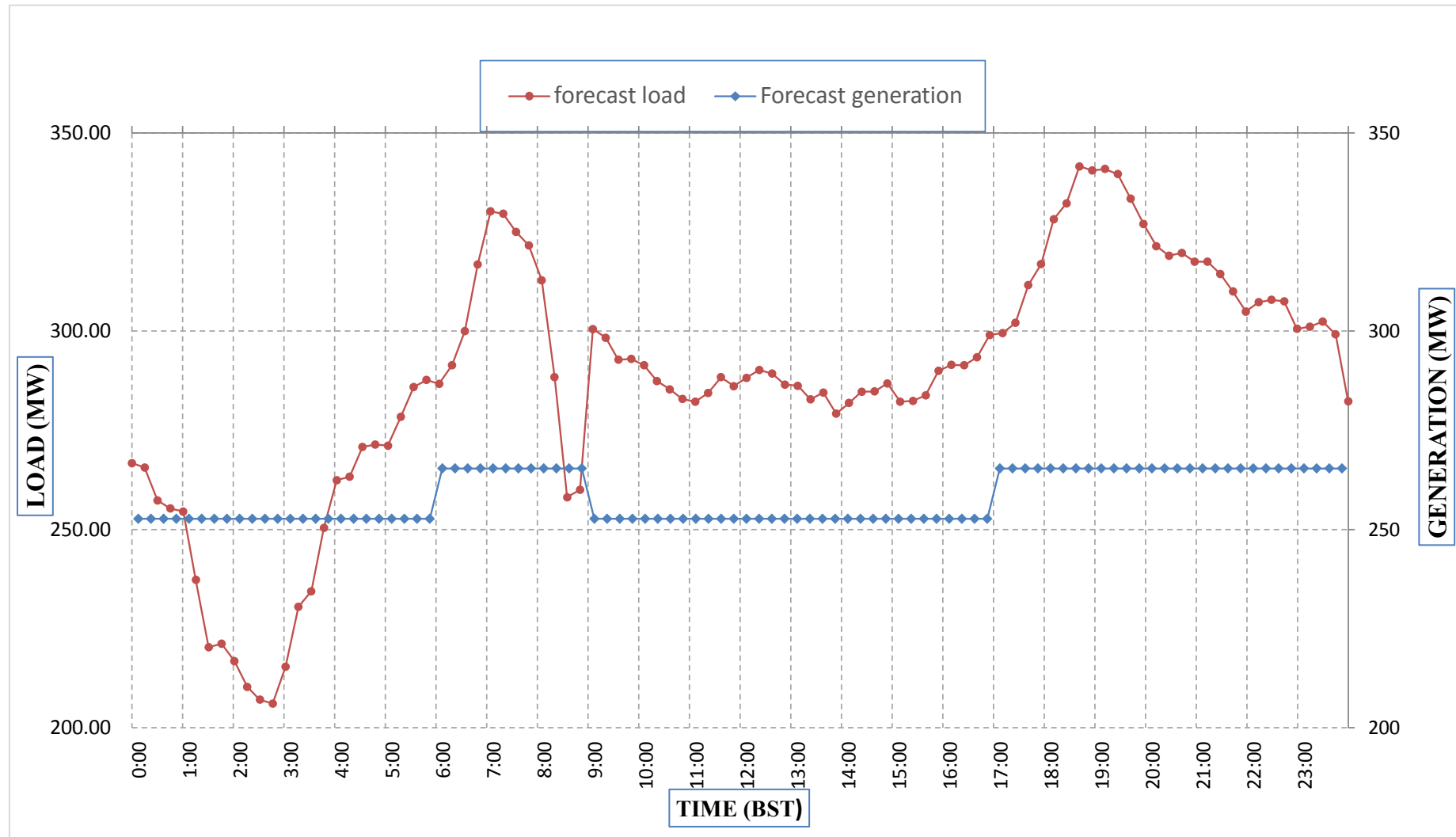
Yours faithfully,  
 Pema Lhamo



Message No.: Enter your message number  
 From: Shift In-charge, Control Room

Date: 16-Feb-18  
 Time: 11:10

Forecast Generation & Load Forecast for Tomorrow (17-Feb-2018).



Yours faithfully,  
 Pema Lhamo

	MW
Scheduled Peak Generation(17-Feb-2018).	265.40
Forecast Peak Load(17-Feb-2018).	341.50



ཕྱག་ལུགས་ལེན་པའི་ལྷན་ཁག་།



Bhutan Power Corporation Ltd.  
Bhutan Power System Operator  
Thimphu: Bhutan

**Message No.:** Enter your message number **Date:** 16-Feb-18  
**From:** Shift In-charge, Control Room **Time:** 11:17

**To**  
Managing Director, BPC. Email: gemtshering@bpc.bt  
Director, O&MD, DGPC. Email: director.umd@drukgreen.com  
General Manager, TD, BPC. Email: ktobgye@bpc.bt  
Advisor, BPC. Email: bharattamang@bpc.bt

**Sub:** Forecast Generation and Actual Generation of Dagachhu (15-Feb-2018).

Hours (BST)	Actual Frequency	Forecast Generation	Actual Generation	Hours (BST)	Actual Frequency	Forecast Generation	Actual Generation
0:00	49.97	18.50	18.03	12:00	50.01	18.50	17.98
0:15	49.97	18.50	18.01	12:15	50.01	18.50	18.00
0:30	49.94	18.50	18.03	12:30	49.95	18.50	17.98
0:45	49.96	18.50	18.08	12:45	50.00	18.50	17.99
1:00	49.98	18.50	18.08	13:00	50.03	18.50	17.98
1:15	50.01	18.50	18.10	13:15	49.96	18.50	17.97
1:30	49.99	18.50	18.09	13:30	49.92	18.50	17.99
1:45	50.00	18.50	18.10	13:45	49.98	18.50	17.99
2:00	49.98	18.50	18.05	14:00	49.94	18.50	17.97
2:15	49.96	18.50	18.09	14:15	49.96	18.50	18.00
2:30	49.95	18.50	18.06	14:30	49.96	18.50	18.00
2:45	49.98	18.50	18.10	14:45	49.97	18.50	17.98
3:00	49.99	18.50	18.07	15:00	49.98	18.50	17.99
3:15	50.02	18.50	18.09	15:15	49.92	18.50	17.98
3:30	50.02	18.50	18.20	15:30	49.94	18.50	17.99
3:45	50.03	18.50	18.21	15:45	49.92	18.50	17.99
4:00	49.95	18.50	18.20	16:00	49.95	18.50	17.99
4:15	49.97	18.50	18.18	16:15	49.88	18.50	18.01
4:30	49.94	18.50	18.23	16:30	49.97	18.50	17.99
4:45	49.94	18.50	18.19	16:45	49.93	18.50	17.99
5:00	49.92	18.50	18.20	17:00	50.01	18.50	18.00
5:15	49.97	18.50	18.19	17:15	49.95	18.50	17.99
5:30	49.93	18.50	18.23	17:30	49.97	18.50	17.99
6:45	49.96	18.50	18.22	17:45	50.05	18.50	18.00
6:00	49.94	18.50	18.21	18:00	50.01	18.50	18.01
6:15	49.91	18.50	18.22	18:15	49.95	18.50	17.98
6:30	49.95	18.50	18.23	18:30	49.91	18.50	17.99
6:45	49.90	18.50	18.19	18:45	49.99	18.50	18.01
7:00	49.93	18.50	18.20	19:00	50.01	18.50	17.99
7:15	49.99	18.50	18.20	19:15	50.02	18.50	18.00
7:30	50.02	18.50	18.20	19:30	50.02	18.50	18.02
7:45	50.04	18.50	18.20	19:45	50.01	18.50	17.98
8:00	50.03	18.50	18.20	20:00	50.00	18.50	18.00
8:15	50.01	18.50	18.21	20:15	49.97	18.50	18.01
8:30	50.02	18.50	18.19	20:30	50.02	18.50	17.99
8:45	50.00	18.50	18.21	20:45	50.01	18.50	17.98
9:00	49.94	18.50	18.22	21:00	49.98	18.50	7.98
9:15	49.96	18.50	18.20	21:15	49.99	18.50	7.98
9:30	49.95	18.50	18.19	21:30	50.01	18.50	0.00
9:45	50.02	18.50	18.20	21:45	50.04	18.50	0.00
10:00	49.99	18.50	18.20	22:00	49.89	18.50	0.00
10:15	50.00	18.50	18.20	22:15	49.93	18.50	0.00
10:30	50.00	18.50	17.98	22:30	49.94	18.50	0.00
10:45	50.04	18.50	17.99	22:45	49.98	18.50	0.00
11:00	50.03	18.50	17.97	23:00	50.00	18.50	0.00
11:15	50.00	18.50	17.98	23:15	49.95	18.50	0.00
11:30	49.98	18.50	17.96	23:30	49.99	18.50	0.00
11:45	50.02	18.50	18.01	23:45	50.03	18.50	0.00

Yours faithfully,  
Pema Lhamo



ཕན། འདུག་སྒྲོག་མེ་ལམ་འཛིན།

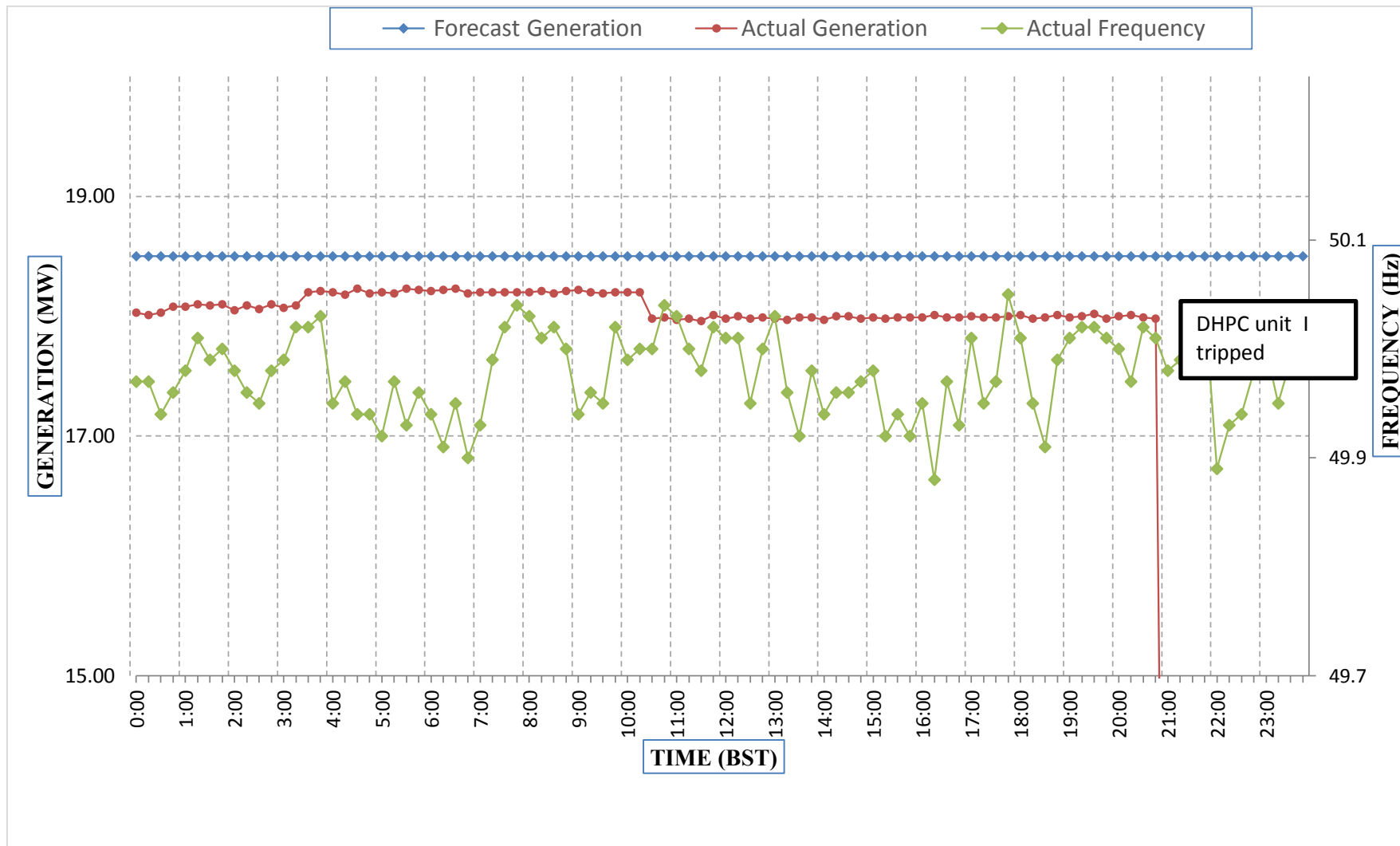
Bhutan Power Corporation Ltd.  
Bhutan Power System Operator  
Thimphu: Bhutan



Message No.: Enter your message number  
From: Shift In-charge, Control Room

Date: 16-Feb-18  
Time: 11:41

Forecast Generation & Actual Generation of Dagachhu(15-Feb-2018).



Yours faithfully,  
Pema Lhamo