



འབྲུག་ཤོག་མེ་ལམ་འཛིན།

Bhutan Power Corporation Ltd.
Bhutan Power System Operator
Thimphu: Bhutan



Message No.: Enter your message number
From: Shift In-charge, Control Room

Date: 15-Feb-18
Time: 10:44

To
Managing Director, BPC. Email: gemtshering@bpc.bt
Director, O&MD, DGPC. Email: director.umd@drukgreen.com
General Manager, TD, BPC. Email: ktobgye@bpc.bt
General Manager, DCSD, BPC. Email: sandeeprai@bpc.bt

Sub: **Load Generation Balance Report of Yesterday (14-Feb-2018).**

Hours (BST)	Forecast		Actual		Hours (BST)	Forecast		Actual	
	Generation	Load	Generation	Load		Generation	Load	Generation	Load
0:00	255.80	267.80	277.04	249.27	12:00	255.80	294.10	271.38	275.71
0:15	255.80	263.40	276.37	252.59	12:15	255.80	295.60	272.59	280.88
0:30	255.80	251.10	276.74	250.91	12:30	255.80	294.50	272.56	288.36
0:45	255.80	256.30	277.76	250.18	12:45	255.80	283.50	272.58	288.06
1:00	255.80	238.90	275.52	244.37	13:00	255.80	286.30	272.38	300.13
1:15	255.80	224.60	276.06	253.18	13:15	255.80	279.40	272.30	294.70
1:30	255.80	218.90	275.77	249.77	13:30	255.80	277.90	273.87	302.43
1:45	255.80	227.40	276.53	251.63	13:45	255.80	272.10	271.98	300.65
2:00	255.80	233.80	276.70	242.49	14:00	255.80	276.90	272.33	294.43
2:15	255.80	230.10	276.69	252.39	14:15	255.80	277.70	272.91	296.44
2:30	255.80	230.80	276.25	253.05	14:30	255.80	280.30	273.14	292.70
2:45	255.80	239.60	277.88	247.71	14:45	255.80	281.10	273.10	295.35
3:00	255.80	253.70	276.57	243.83	15:00	255.80	279.40	273.47	291.01
3:15	255.80	254.10	277.07	250.00	15:15	255.80	279.50	272.37	285.74
3:30	255.80	259.30	276.70	244.91	15:30	255.80	281.50	274.08	291.52
3:45	255.80	257.20	275.75	253.94	15:45	255.80	285.10	273.99	301.49
4:00	255.80	260.70	277.35	251.96	16:00	255.80	285.90	273.03	305.24
4:15	255.80	262.50	275.83	248.41	16:15	299.80	287.90	319.98	306.70
4:30	255.80	264.50	275.09	252.04	16:30	299.80	290.50	311.39	304.71
4:45	255.80	266.20	276.48	250.80	16:45	299.80	295.90	317.62	313.95
5:00	255.80	265.30	275.50	251.91	17:00	299.80	298.90	318.87	315.99
5:15	255.80	272.20	277.33	259.43	17:15	311.30	301.50	357.97	311.96
5:30	255.80	274.60	276.40	252.01	17:30	311.30	309.90	357.38	324.73
5:45	255.80	276.90	275.04	261.05	17:45	311.30	318.60	368.16	324.39
6:00	255.80	277.60	275.80	255.11	18:00	311.30	329.90	368.32	341.00
6:15	267.30	280.90	275.60	267.62	18:15	311.30	333.90	368.80	353.09
6:30	267.30	297.40	275.33	253.79	18:30	311.30	342.50	369.01	358.17
6:45	267.30	308.70	274.62	294.30	18:45	311.30	343.80	368.48	357.52
7:00	267.30	320.70	273.40	305.59	19:00	311.30	344.50	368.30	355.53
7:15	267.30	325.60	272.98	305.13	19:15	311.30	341.90	368.37	350.89
7:30	267.30	325.40	272.34	296.19	19:30	311.30	336.50	367.73	347.39
7:45	267.30	327.60	271.73	298.44	19:45	311.30	327.60	368.51	339.90
8:00	267.30	322.60	256.79	286.70	20:00	311.30	328.50	368.17	321.22
8:15	267.30	313.60	283.20	297.09	20:15	311.30	324.80	370.17	304.10
8:30	267.30	306.60	282.88	292.95	20:30	311.30	321.80	370.48	312.96
8:45	267.30	278.70	284.19	285.95	20:45	311.30	314.50	368.82	316.14
9:00	267.30	308.10	284.06	281.95	21:00	311.30	314.60	356.12	317.04
9:15	255.80	310.10	282.72	286.48	21:15	299.80	314.50	388.16	312.57
9:30	255.80	300.00	284.91	286.73	21:30	299.80	306.40	388.46	305.98
9:45	255.80	299.40	283.84	279.41	21:45	299.80	298.70	387.31	296.69
10:00	255.80	296.80	283.85	278.52	22:00	299.80	296.30	387.06	291.07
10:15	255.80	292.90	271.76	281.35	22:15	299.80	296.60	386.96	285.96
10:30	255.80	293.90	271.94	282.06	22:30	299.80	293.80	385.80	281.77
10:45	255.80	292.60	272.87	273.62	22:45	299.80	289.30	386.97	275.45
11:00	255.80	292.60	272.80	259.20	23:00	299.80	281.00	387.20	277.16
11:15	255.80	295.90	273.38	266.61	23:15	299.80	282.40	406.20	271.14
11:30	255.80	296.60	272.93	266.58	23:30	299.80	280.50	407.30	271.78
11:45	255.80	297.30	272.68	264.54	23:45	299.80	277.80	410.32	274.03

Yours faithfully
Kinley Wangmo

Coincidental peak load of Day(Last year):	
298.81 MW	14-Feb-17
Maximum Load till date:	
362.09	14-Nov-17



འབྲུག་གློག་ཁེ་ལས་འཛིན།

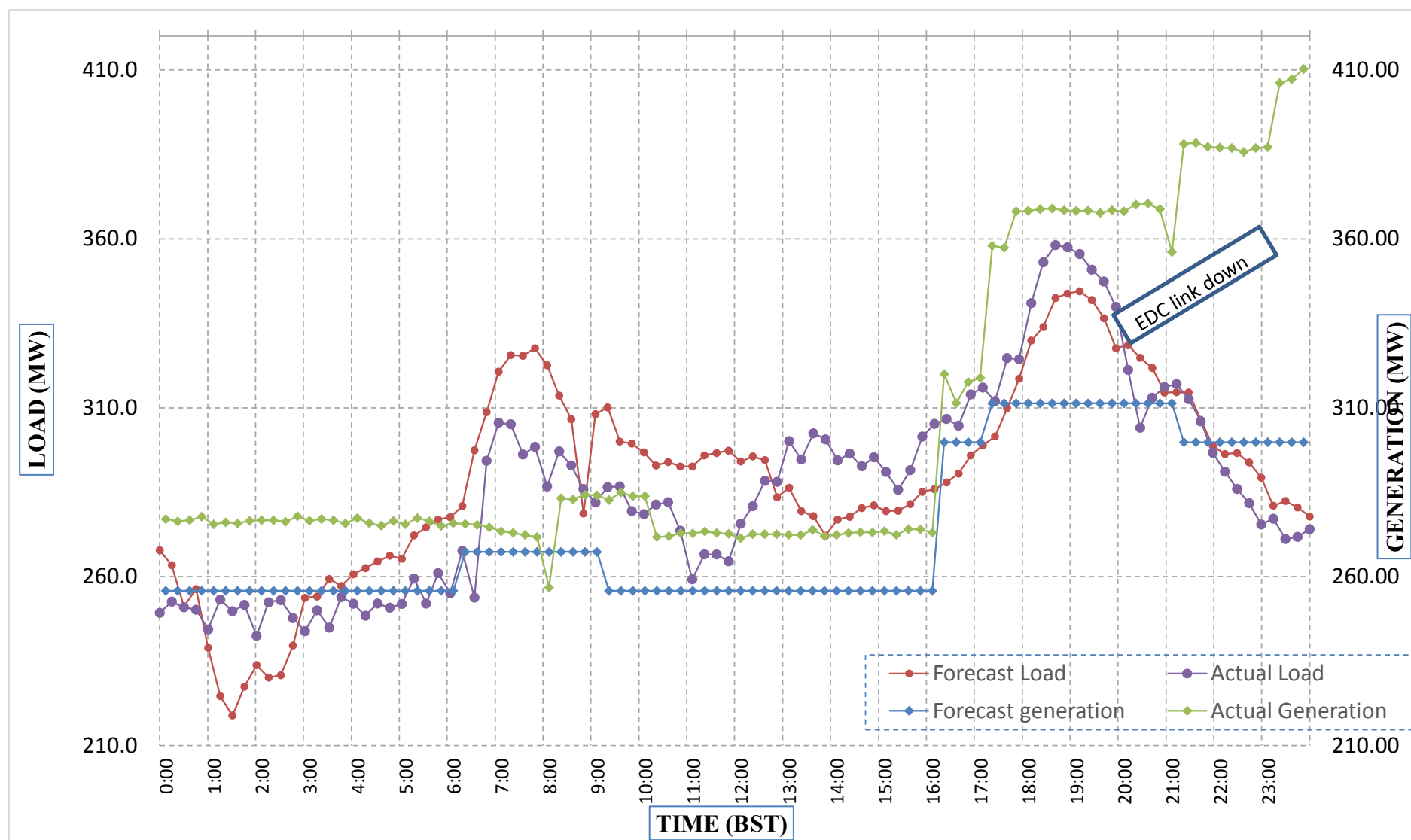
Bhutan Power Corporation Ltd.
 Bhutan Power System Operator
 Thimphu: Bhutan



Message No.: Enter your message number
 From: Shift In-charge, Control Room

Date: 15-Feb-18
 Time: 10:44

Forecast Generation & Load with Actual Generation & Load (14-Feb-2018).



Yours faithfully,
 Kinley Wangmo

	MW	Coincidental peak load of Day(Last year):	
Peak Co-incident Generation(14-Feb-2018).	410.32	298.81 MW	14-Feb-17
Peak Co-incident Load(14-Feb-2018).	358.17		
		Maximum Load till date:	
		362.09	14-Nov-17

Telephone: +975-02335631; Fax: +975-02335632; Email: bhutansystemoperator@bpc.bt; www.bpc.bt



འབྲུག་གྲོག་མོ་ལས་འཛིན།

Bhutan Power Corporation Ltd.
Bhutan Power System Operator
Thimphu: Bhutan



Message No.: Enter your message number
From: Shift In-charge, Control Room

Date: 15-Feb-18
Time: 10:44

To
Managing Director, BPC. Email: gemtshering@bpc.bt
Director, O&MD, DGPC. Email: director.umd@drukgreen.com
General Manager, TD, BPC. Email: thinleygyeltshen@bpc.bt
General Manager, DCSD, BPC. Email: sandeeprai@bpc.bt

Sub: Load Generation Balance Report of Today (15-Feb-2018).

Hours (BST)	Forecast		Actual	
	Generation	Load	Generation	Load
0:00	299.20	268.80	411.41	270.59
0:15	299.20	268.60	409.77	272.66
0:30	299.20	264.40	410.61	269.63
0:45	299.20	265.80	410.55	271.55
1:00	299.20	262.10	411.52	263.48
1:15	299.20	260.50	456.45	265.99
1:30	299.20	235.20	459.98	270.37
1:45	299.20	229.30	457.58	268.28
2:00	299.20	221.90	457.20	265.80
2:15	299.20	216.50	459.00	263.18
2:30	299.20	206.80	459.51	264.89
2:45	299.20	206.30	459.45	261.83
3:00	299.20	209.90	459.41	264.75
3:15	299.20	223.70	459.59	264.36
3:30	299.20	234.90	459.48	268.21
3:45	299.20	244.60	459.29	265.34
4:00	299.20	266.50	459.40	267.03
4:15	299.20	266.00	449.09	263.98
4:30	299.20	270.30	447.97	271.92
4:45	299.20	275.10	448.08	275.02
5:00	299.20	278.40	447.45	268.25
5:15	299.20	282.90	410.16	272.01
5:30	299.20	285.30	318.92	267.24
5:45	299.20	285.80	302.09	272.27
6:00	299.20	286.50	301.96	269.02
6:15	310.10	290.50	289.34	277.57
6:30	310.10	297.60	268.39	281.38
6:45	310.10	311.30	267.00	293.80
7:00	310.10	322.80	278.06	309.97
7:15	310.10	325.50	281.82	313.16
7:30	310.10	325.90	261.74	306.20
7:45	310.10	329.30	275.43	309.40
8:00	310.10	321.40	277.16	296.30
8:15	310.10	323.40	228.61	297.02
8:30	310.10	308.40	187.24	294.51
8:45	195.20	247.00	189.45	289.23
9:00	195.20	312.10	189.00	287.14

Yours faithfully,
Kinley Wangmo

Coincidental peak load of Day(Last year):	
298.81	15-Feb-17

Maximum Load till date:	
362.09	14-Nov-17



འབྲུག་གྲོག་མེ་ལས་འཛིན།

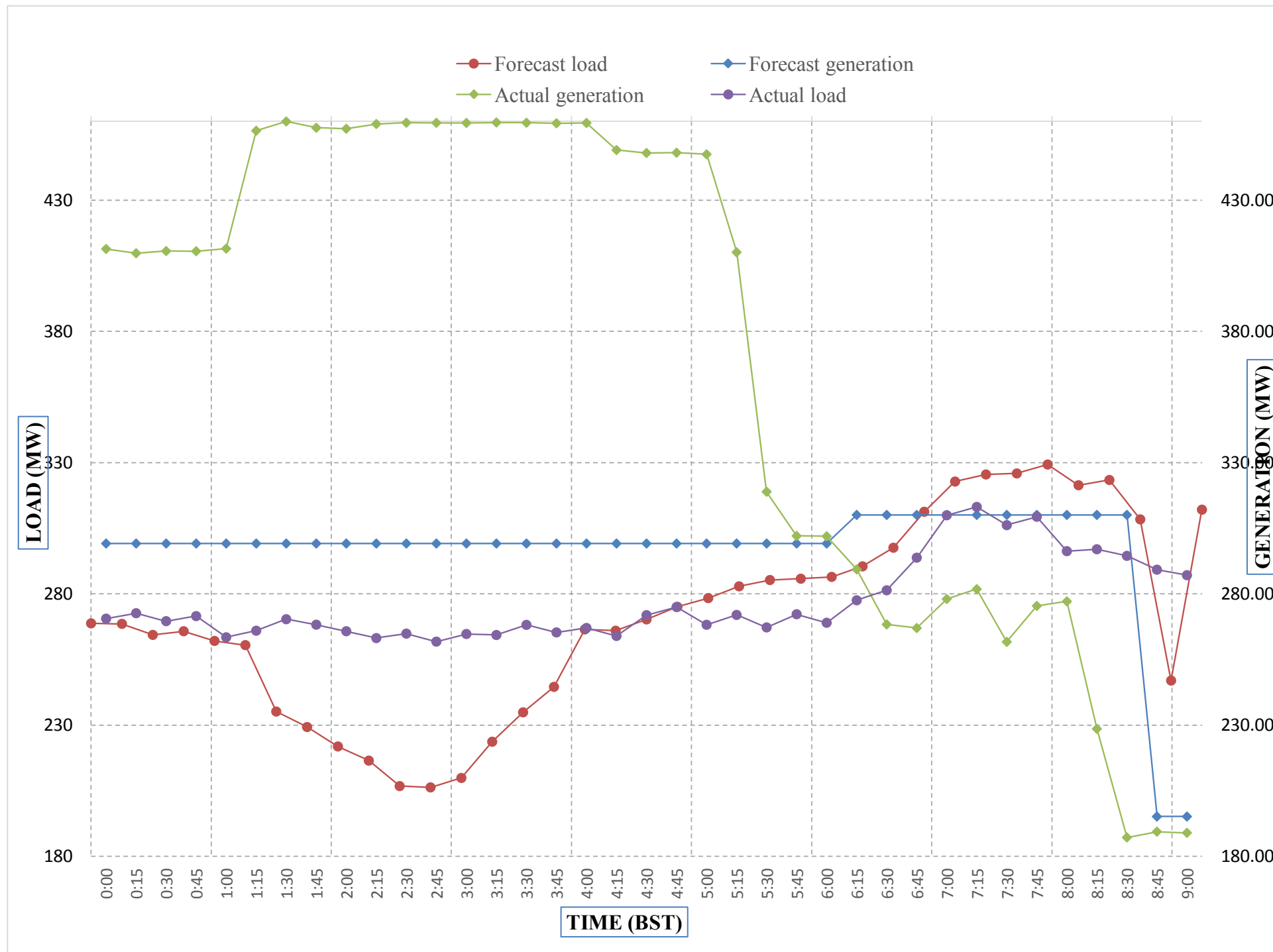
Bhutan Power Corporation Ltd.
Bhutan Power System Operator
Thimphu: Bhutan



Message No.: Enter your message number
From: Shift In-charge, Control Room

Date: 15-Feb-18
Time: 10:44

Forecast Generation & Load with Actual Generation & Load of Today from 00:00hrs to 09:00hrs(15-Feb-2018).

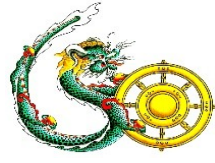


Yours faithfully
Kinley Wangmo

Coincidental peak load of Day(Last)	
298.81	15-Feb-17
Maximum Load till date:	
368.804688	18-Dec-00



འབྲུག་གྲོག་ལེན་ལྷན་ཁག།
Bhutan Power Corporation Ltd.
Bhutan Power System Operator
 Thimphu: Bhutan



Message No.: Enter your message number **Date:** 15-Feb-18
From: Shift In-charge, Control Room **Time:** 10:44

To
 Managing Director, BPC. Email: gemtshering@bpc.bt
 Director, O&MD, DGPC. Email: director.omid@drukgreen.com
 General Manager, TD, BPC. Email: ktobgye@bpc.bt
 Advisor, BPC. Email: bharattamang@bpc.bt

Sub: Load Generation Balance Report of Tomorrow (16-Feb-2018).

Hours (BST)	Forecast		Hours (BST)	Forecast	
	Generation	Load		Generation	Load
0:00	270.80	264.90	12:00	270.80	287.80
0:15	270.80	264.60	12:15	270.80	290.40
0:30	270.80	261.30	12:30	270.80	289.40
0:45	270.80	261.60	12:45	270.80	285.60
1:00	270.80	262.80	13:00	270.80	287.00
1:15	270.80	265.60	13:15	270.80	280.70
1:30	270.80	260.50	13:30	270.80	282.80
1:45	270.80	262.00	13:45	270.80	279.00
2:00	270.80	257.90	14:00	270.80	281.40
2:15	270.80	255.50	14:15	270.80	283.40
2:30	264.80	237.80	14:30	270.80	284.80
2:45	253.30	214.60	14:45	270.80	286.30
3:00	253.30	202.50	15:00	270.80	282.90
3:15	253.30	201.20	15:15	270.80	282.20
3:30	253.30	203.30	15:30	270.80	284.70
3:45	253.30	208.80	15:45	270.80	291.20
4:00	253.30	228.90	16:00	270.80	291.90
4:15	253.30	228.60	16:15	270.80	292.20
4:30	270.80	243.00	16:30	270.80	294.60
4:45	270.80	243.20	16:45	270.80	300.10
5:00	270.80	251.50	17:00	282.60	303.30
5:15	270.80	270.10	17:15	282.60	303.60
5:30	270.80	283.80	17:30	282.60	313.20
6:45	270.80	289.50	17:45	282.60	320.00
6:00	282.60	291.00	18:00	282.60	331.40
6:15	282.60	295.70	18:15	282.60	336.10
6:30	282.60	303.60	18:30	282.60	346.10
6:45	282.60	322.00	18:45	282.60	345.80
7:00	282.60	335.70	19:00	282.60	345.70
7:15	282.60	335.90	19:15	282.60	343.00
7:30	282.60	330.00	19:30	282.60	338.70
7:45	282.60	322.90	19:45	282.60	330.80
8:00	282.60	309.50	20:00	282.60	323.80
8:15	282.60	282.10	20:15	282.60	320.20
8:30	281.00	252.00	20:30	282.60	320.30
8:45	282.60	259.30	20:45	282.60	316.00
9:00	270.80	304.90	21:00	270.80	315.70
9:15	270.80	298.90	21:15	270.80	314.40
9:30	270.80	292.80	21:30	270.80	306.90
9:45	270.80	292.00	21:45	270.80	299.60
10:00	270.80	288.40	22:00	270.80	305.00
10:15	270.80	286.20	22:15	270.80	305.20
10:30	270.80	286.70	22:30	270.80	300.40
10:45	270.80	282.70	22:45	270.80	294.60
11:00	270.80	280.30	23:00	270.80	289.10
11:15	270.80	283.90	23:15	270.80	284.80
11:30	270.80	287.50	23:30	270.80	286.20
11:45	270.80	286.10	23:45	270.80	277.30

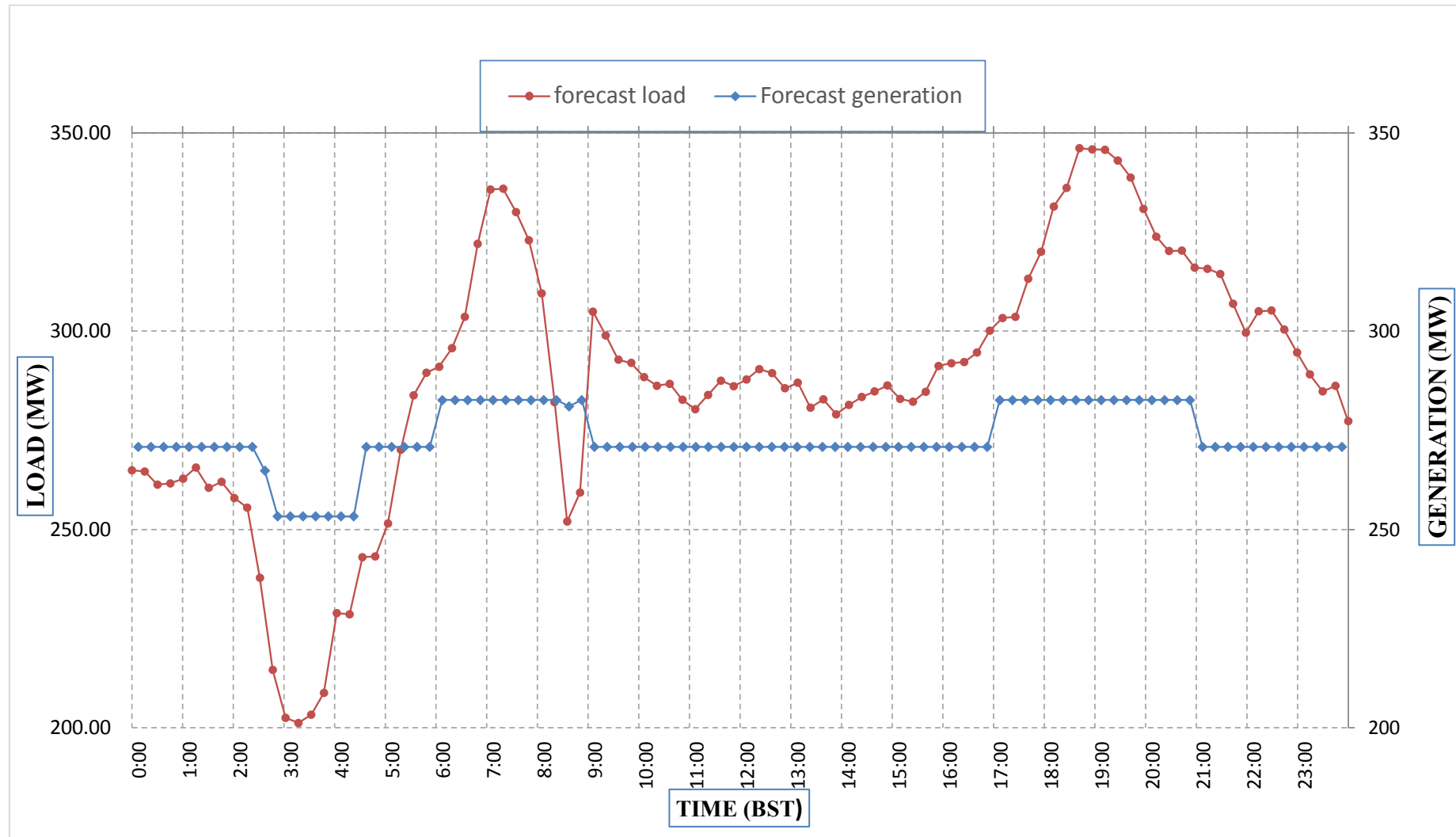
Yours faithfully,
 Kinley Wangmo



Message No.: Enter your message number
 From: Shift In-charge, Control Room

Date: 15-Feb-18
 Time: 11:10

Forecast Generation & Load Forecast for Tomorrow (16-Feb-2018).



Yours faithfully,
 Kinley Wangmo

	MW
Scheduled Peak Generation(16-Feb-2018).	282.60
Forecast Peak Load(16-Feb-2018).	346.10



འབྲུག་གྲོག་ཚེ་ལས་འདི་ན།

Bhutan Power Corporation Ltd.
Bhutan Power System Operator
Thimphu: Bhutan



Message No.: Enter your message number Date: 15-Feb-18
From: Shift In-charge, Control Room Time: 10:44

To
Managing Director, BPC. Email: gemtshering@bpc.bt
Director, O&MD, DGPC. Email: director.umd@drukgreen.com
General Manager, TD, BPC. Email: ktobgye@bpc.bt
Advisor, BPC. Email: bharattamang@bpc.bt

Sub: Forecast Generation and Actual Generation of Dagachhu (14-Feb-2018).

Hours (BST)	Actual Frequency	Forecast Generation	Actual Generation	Hours (BST)	Actual Frequency	Forecast Generation	Actual Generation
0:00	49.98	18.00	18.28	12:00	49.97	18.00	17.79
0:15	50.02	18.00	18.30	12:15	50.00	18.00	17.82
0:30	49.98	18.00	18.29	12:30	50.00	18.00	17.98
0:45	50.03	18.00	18.31	12:45	50.02	18.00	17.99
1:00	50.01	18.00	18.30	13:00	50.09	18.00	17.98
1:15	50.03	18.00	18.28	13:15	50.03	18.00	17.97
1:30	50.01	18.00	18.30	13:30	50.03	18.00	17.96
1:45	50.04	18.00	18.28	13:45	50.00	18.00	17.46
2:00	50.04	18.00	18.28	14:00	49.93	18.00	17.99
2:15	50.05	18.00	18.29	14:15	49.93	18.00	17.99
2:30	50.02	18.00	18.28	14:30	49.91	18.00	18.00
2:45	50.04	18.00	18.27	14:45	49.95	18.00	18.00
3:00	50.02	18.00	18.28	15:00	49.98	18.00	17.98
3:15	50.02	18.00	18.28	15:15	49.99	18.00	18.04
3:30	50.06	18.00	18.29	15:30	49.96	18.00	18.01
3:45	50.11	18.00	18.29	15:45	49.97	18.00	18.00
4:00	49.99	18.00	18.27	16:00	49.98	18.00	18.01
4:15	49.99	18.00	18.27	16:15	49.99	18.00	17.99
4:30	49.96	18.00	17.95	16:30	49.99	18.00	18.00
4:45	50.00	18.00	17.98	16:45	49.99	18.00	18.01
5:00	49.94	18.00	17.97	17:00	50.03	18.00	18.00
5:15	49.94	18.00	17.95	17:15	49.95	18.00	18.01
5:30	49.97	18.00	17.99	17:30	49.95	18.00	17.99
6:45	50.00	18.00	17.95	17:45	49.98	18.00	17.99
6:00	49.99	18.00	17.97	18:00	50.00	18.00	18.07
6:15	49.95	18.00	17.99	18:15	49.97	18.00	17.98
6:30	49.90	18.00	18.00	18:30	49.95	18.00	17.99
6:45	49.89	18.00	17.98	18:45	49.99	18.00	17.98
7:00	49.96	18.00	17.97	19:00	49.98	18.00	17.98
7:15	50.00	18.00	17.99	19:15	49.97	18.00	17.98
7:30	49.98	18.00	17.99	19:30	49.96	18.00	18.00
7:45	50.01	18.00	17.98	19:45	49.97	18.00	17.97
8:00	50.00	18.00	18.01	20:00	50.01	18.00	17.98
8:15	49.99	18.00	17.79	20:15	50.00	18.00	18.97
8:30	50.02	18.00	17.80	20:30	49.98	18.00	18.98
8:45	49.94	18.00	17.80	20:45	49.99	18.00	18.02
9:00	49.91	18.00	17.80	21:00	49.92	18.00	18.49
9:15	49.91	18.00	17.80	21:15	49.96	18.00	18.47
9:30	49.95	18.00	17.82	21:30	50.02	18.00	18.49
9:45	50.04	18.00	17.81	21:45	50.06	18.00	18.00
10:00	49.98	18.00	17.81	22:00	50.01	18.00	17.97
10:15	50.03	18.00	17.80	22:15	50.02	18.00	18.01
10:30	50.06	18.00	17.80	22:30	50.03	18.00	17.01
10:45	50.04	18.00	17.81	22:45	50.03	18.00	18.01
11:00	50.02	18.00	17.81	23:00	50.02	18.00	18.02
11:15	50.03	18.00	17.79	23:15	49.99	18.00	18.01
11:30	50.00	18.00	17.80	23:30	50.00	18.00	18.01
11:45	50.01	18.00	17.80	23:45	50.00	18.00	18.01

Yours faithfully,
Kinley Wangmo



འབྲུག་རྒྱལ་ཁོག་གི་འགན་ཁུར་ལྷན་ཁག་།

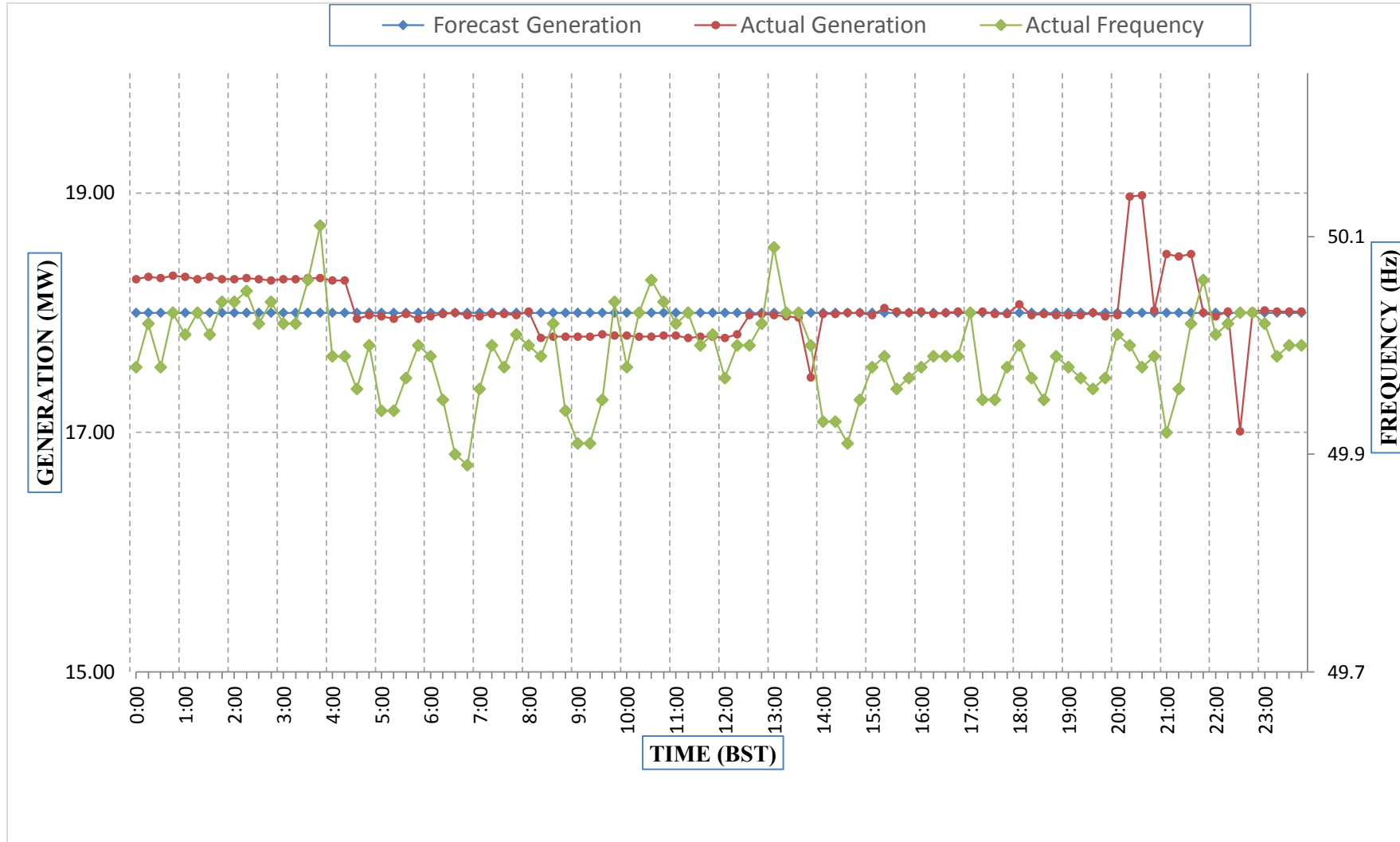
Bhutan Power Corporation Ltd.
Bhutan Power System Operator
Thimphu: Bhutan



Message No.: Enter your message number
From: Shift In-charge, Control Room

Date: 15-Feb-18
Time: 12:36

Forecast Generation & Actual Generation of Dagachhu(14-Feb-2018).



Yours faithfully,
Kinley Wangmo