



འབྲུག་གླིང་གི་ལམ་འཛིན།

Bhutan Power Corporation Ltd.
Bhutan Power System Operator
Thimphu: Bhutan



Message No.: Enter your message number
From: Shift In-charge, Control Room

Date: 31-Jan-18
Time: 12:14

To
Managing Director, BPC. Email: gemtshering@bpc.bt
Director, O&MD, DGPC. Email: director.omb@drukgreen.com
General Manager, TD, BPC. Email: ktobgye@bpc.bt
General Manager, DCSD, BPC. Email: sandeeprai@bpc.bt

Sub: **Load Generation Balance Report of Yesterday (30-Jan-2018).**

Hours (BST)	Forecast		Actual		Hours (BST)	Forecast		Actual	
	Generation	Load	Generation	Load		Generation	Load	Generation	Load
0:00	285.7	245.2	287.4	255.5	12:00	285.7	288.7	289.32	309.37
0:15	285.7	234.3	307.2	253.3	12:15	285.7	288.5	288.88	304.27
0:30	285.7	228.4	307.4	259.7	12:30	285.7	289.4	289.37	302.62
0:45	285.7	225.4	308.5	259.0	12:45	285.7	284.4	289.32	299.47
1:00	285.7	218.6	308.4	258.2	13:00	285.7	282.6	289.15	300.48
1:15	285.7	219.2	308.8	256.0	13:15	285.7	278.1	289.13	296.06
1:30	285.7	222.3	307.1	253.8	13:30	285.7	279.3	279.27	296.28
1:45	285.7	234.1	306.9	249.1	13:45	285.7	280.9	279.81	270.59
2:00	285.7	265.4	307.8	242.8	14:00	285.7	279.1	279.89	288.23
2:15	285.7	268.6	307.6	245.3	14:15	285.7	279.3	280.52	291.41
2:30	285.7	265.7	307.4	246.7	14:30	285.7	278.4	280.98	291.30
2:45	285.7	266.9	306.7	245.4	14:45	285.7	279.5	280.79	293.07
3:00	285.7	266.7	306.8	240.8	15:00	285.7	278.5	280.67	291.09
3:15	285.7	268.7	304.7	245.4	15:15	285.7	281.1	280.83	288.31
3:30	285.7	270.7	305.1	244.9	15:30	285.7	284.5	280.96	298.20
3:45	285.7	271.8	304.1	246.8	15:45	285.7	281.2	276.44	289.07
4:00	285.7	273.9	304.3	247.6	16:00	285.7	282.9	276.13	282.63
4:15	285.7	272.7	303.8	242.5	16:15	285.7	285	276.94	286.41
4:30	285.7	271.1	297.5	246.7	16:30	285.7	286.3	277.23	298.77
4:45	285.7	270.7	303.9	252.5	16:45	285.7	294.3	281.70	301.22
5:00	285.7	273.5	303.3	248.1	17:00	285.7	298.2	280.77	313.79
5:15	285.7	275.1	299.8	258.6	17:15	298.8	305.6	294.73	324.54
5:30	285.7	273.5	298.8	264.0	17:30	298.8	309.8	294.48	329.71
5:45	285.7	274.2	298.5	260.5	17:45	298.8	315.1	294.27	329.35
6:00	298.8	270.6	298.1	260.5	18:00	298.8	325.7	299.64	339.03
6:15	298.8	271.9	298.6	265.3	18:15	298.8	334.2	300.66	347.79
6:30	298.8	274.6	311.6	272.1	18:30	298.8	336	301.98	353.98
6:45	298.8	282.4	310.5	281.8	18:45	298.8	333.9	301.84	351.21
7:00	298.8	291.8	312.5	281.4	19:00	298.8	332.9	302.16	344.01
7:15	298.8	296.4	313.6	300.4	19:15	298.8	330.4	322.96	337.09
7:30	298.8	306	314.8	310.9	19:30	298.8	326.5	322.66	342.45
7:45	298.8	307	313.9	308.6	19:45	298.8	324.5	322.23	335.52
8:00	298.8	307.8	314.7	312.4	20:00	298.8	321.1	322.37	331.52
8:15	298.8	306.6	314.4	307.0	20:15	298.8	318.7	323.14	331.89
8:30	298.8	304.5	313.7	307.1	20:30	298.8	320	322.69	326.80
8:45	298.8	302.5	312.6	299.0	20:45	298.8	321.4	322.55	323.59
9:00	298.8	266.8	312.2	303.3	21:00	298.8	322.3	322.93	321.42
9:15	285.7	310.1	311.44	302.20	21:15	285.7	319.7	318.96	322.61
9:30	285.7	304.4	300.21	305.55	21:30	285.7	316.9	318.99	310.34
9:45	285.7	300.4	299.38	307.82	21:45	285.7	309.6	318.55	307.83
10:00	285.7	300.2	298.96	305.16	22:00	285.7	303.3	319.41	297.88
10:15	285.7	294.5	298.98	293.15	22:15	285.7	297.5	319.59	296.16
10:30	285.7	288.6	299.42	303.76	22:30	285.7	292.2	319.88	288.67
10:45	285.7	291.4	299.23	284.90	22:45	285.7	289.3	318.77	283.23
11:00	285.7	290.2	299.09	294.35	23:00	285.7	287.5	319.52	281.21
11:15	285.7	291.3	290.05	300.21	23:15	285.7	275.7	319.31	279.77
11:30	285.7	293.9	289.14	305.57	23:30	285.7	273.7	319.38	276.26
11:45	285.7	290.2	289.13	305.44	23:45	285.7	270.3	319.37	273.97

288.39		258.18	
Coincidental peak load of Day (Last year):			
253.23	30-Jan-17		
Maximum Load till date:			
362.09	14-Nov-17		

Yours faithfully
Jangchuk Selden



འབྲུག་རྒྱལ་ཁོ་ལས་འཛིན།

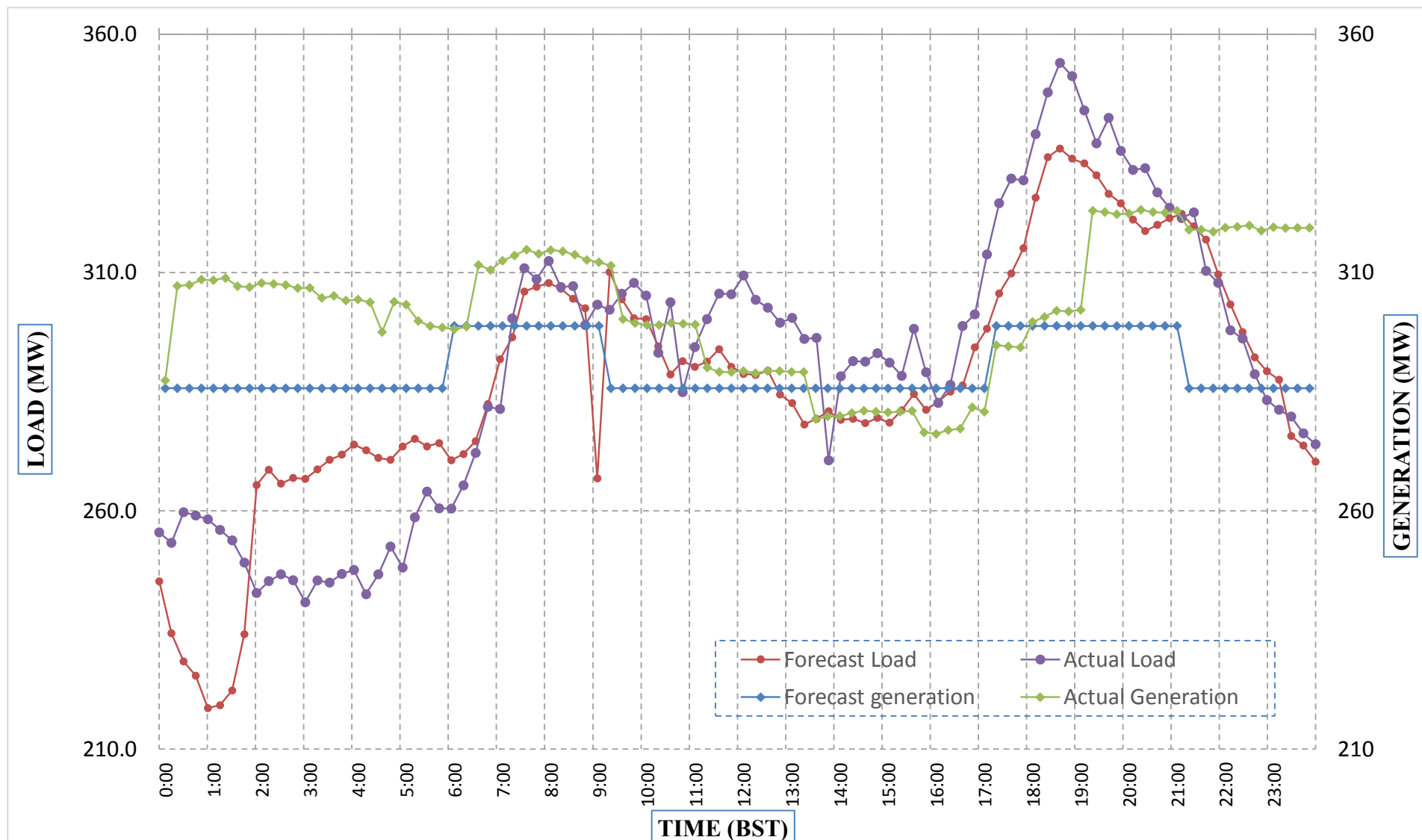
Bhutan Power Corporation Ltd.
 Bhutan Power System Operator
 Thimphu: Bhutan



Message No.: Enter your message number
 From: Shift In-charge, Control Room

Date: 30-Jan-18
 Time: 11:03

Forecast Generation & Load with Actual Generation & Load (29-Jan-2018).



Yours faithfully,
 Jangchuk Selden

	MW	Coincidental peak load of Day(Last year):	
Peak Co-incident Generation(29-Jan-2018).	323.14	253.23	30-Jan-17
Peak Co-incident Load(29-Jan-2018).	353.98		
		Maximum Load till date:	
		362.09	14-Nov-17

Telephone: +975-02335631; Fax: +975-02335632; Email: bhutansystemoperator@bpc.bt; www.bpc.bt



འབྲུག་གློག་ལེ་ལས་འཛིན།

Bhutan Power Corporation Ltd.
Bhutan Power System Operator
Thimphu: Bhutan



Message No.: Enter your message number
From: Shift In-charge, Control Room

Date: 31-Jan-18
Time: 12:17

To
Managing Director, BPC. Email: gemtshering@bpc.bt
Director, O&MD, DGPC. Email: director.umd@drukgreen.com
General Manager, TD, BPC. Email: thinleygyeltshen@bpc.bt
General Manager, DCSD, BPC. Email: sandeeprai@bpc.bt

Sub: Load Generation Balance Report of Today (31-Jan-2018).

Hours (BST)	Forecast		Actual	
	Generation	Load	Generation	Load
0:00	332.8	268.1	319.9	268.9
0:15	322.9	252.9	320.1	259.5
0:30	305.4	235.4	319.0	262.1
0:45	298	228	320.2	261.0
1:00	286.7	216.7	319.1	237.5
1:15	289.2	219.2	320.3	233.9
1:30	294.2	224.2	319.2	239.0
1:45	303.8	233.8	318.0	239.0
2:00	312.3	254	319.1	244.1
2:15	312.3	269.7	318.7	255.2
2:30	312.3	269.3	319.1	253.5
2:45	312.3	265.1	318.0	251.9
3:00	312.3	264.4	318.1	257.4
3:15	312.3	266.1	318.7	257.0
3:30	312.3	266.9	318.6	258.6
3:45	312.3	267.6	318.2	252.7
4:00	312.3	268.6	318.6	250.1
4:15	312.3	267.2	315.8	257.5
4:30	312.3	264.8	314.1	258.1
4:45	312.3	265.3	313.6	262.6
5:00	312.3	269.5	313.8	246.9
5:15	312.3	269.4	302.4	253.3
5:30	312.3	269.4	303.5	259.6
5:45	312.3	269.3	302.3	267.3
6:00	327.9	267.1	303.3	276.6
6:15	327.9	269.2	313.6	279.9
6:30	327.9	270.4	312.3	280.0
6:45	327.9	278.5	303.8	284.0
7:00	327.9	289.2	303.5	299.2
7:15	327.9	294.6	301.4	302.5
7:30	327.9	303	301.1	309.3
7:45	327.9	306.6	300.0	312.2
8:00	327.9	308	299.5	314.4
8:15	327.9	306.8	299.4	284.1
8:30	327.9	304.9	299.6	300.2
8:45	327.9	302.5	299.2	298.4
9:00	313.7	274.3	299.0	298.3

Coincidental peak load of Day(Last year):	
232.57	31-Jan-18
Maximum Load till date:	
362.09	14-Nov-17

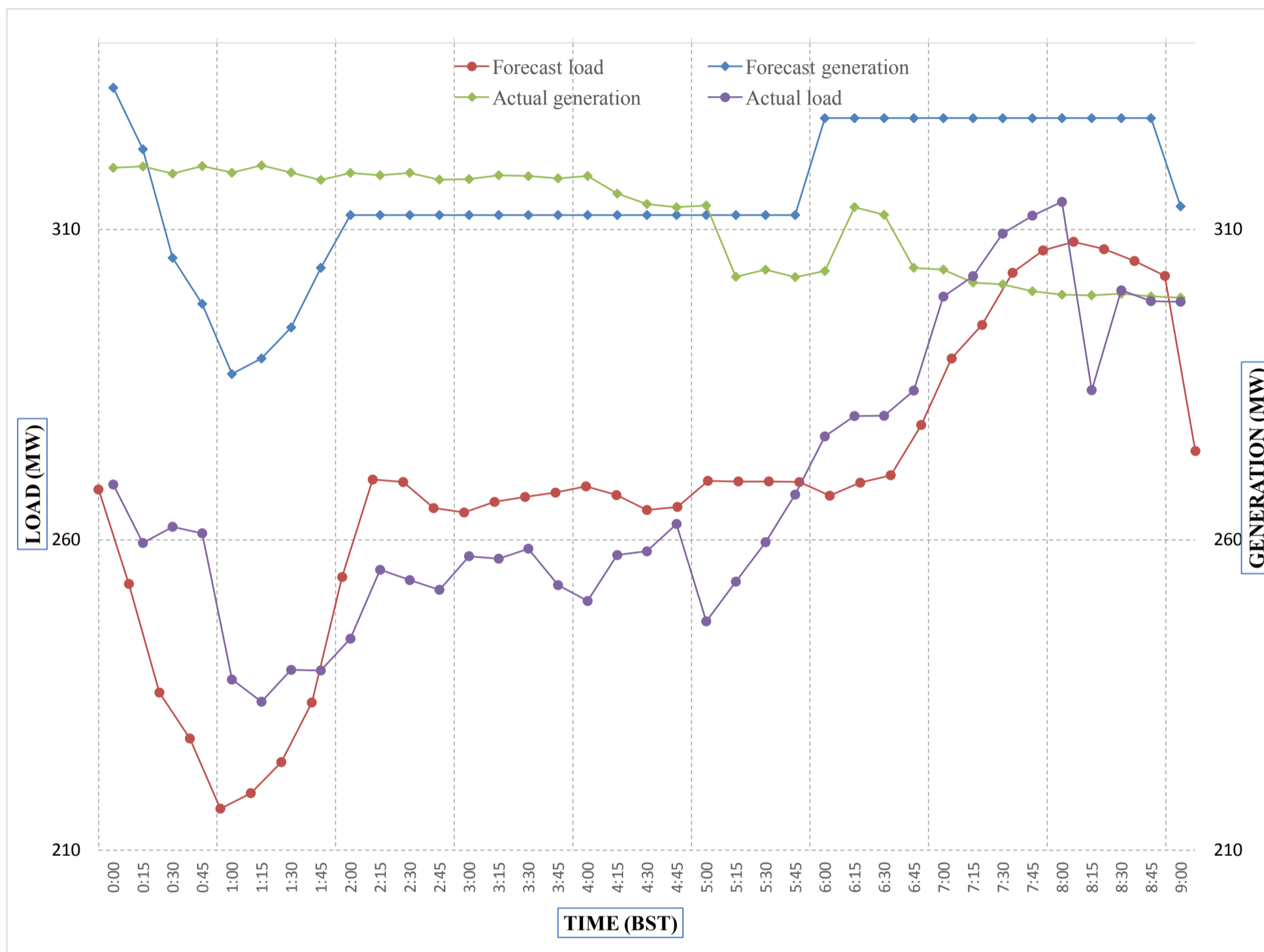
Yours faithfully,
Jangchuk Selden



Message No.: Enter your message number
 From: Shift In-charge, Control Room

Date: 31-Jan-18
 Time: 12:14

Forecast Generation & Load with Actual Generation & Load of Today from 00:00hrs to 09:00hrs(31-Jan-2018).



Yours faithfully
 Jangchuk Selden



འབྲུག་གྲོག་ལེན་ལུ་ལས་འཛུགས།
Bhutan Power Corporation Ltd.
Bhutan Power System Operator
 Thimphu: Bhutan



Message No.: Enter your message number **Date:** 31-Jan-18
From: Shift In-charge, Control Room **Time:** 12:14

To
 Managing Director, BPC. Email: gemtshering@bpc.bt
 Director, O&MD, DGPC. Email: director.umd@drukgreen.com
 General Manager, TD, BPC. Email: ktobgye@bpc.bt
 Advisor, BPC. Email: bharattamang@bpc.bt

Sub: **Load Generation Balance Report of Tomorrow (01-Feb-2018).**

Hours (BST)	Forecast		Hours (BST)	Forecast	
	Generation	Load		Generation	Load
0:00	291.2	221.2	12:00	312.5	293.3
0:15	285.9	215.9	12:15	312.5	290.5
0:30	285.4	215.4	12:30	312.5	291
0:45	290.4	220.4	12:45	312.5	286.6
1:00	301.6	231.6	13:00	312.5	285.9
1:15	307.2	237.2	13:15	312.5	280.3
1:30	312.5	249.6	13:30	312.5	282.8
1:45	312.5	263.7	13:45	312.5	275.8
2:00	312.5	269.5	14:00	312.5	278.2
2:15	312.5	270.2	14:15	312.5	280
2:30	312.5	269.2	14:30	312.5	280.6
2:45	312.5	263.6	14:45	312.5	280.5
3:00	312.5	260	15:00	312.5	280.7
3:15	312.5	261.1	15:15	312.5	281
3:30	312.5	262.1	15:30	312.5	284.3
3:45	312.5	263.8	15:45	312.5	282
4:00	312.5	263.9	16:00	312.5	283.4
4:15	312.5	263.2	16:15	312.5	284.8
4:30	312.5	261	16:30	312.5	289.8
4:45	312.5	262.4	16:45	312.5	296.3
5:00	312.5	266.1	17:00	328.2	302.2
5:15	312.5	268.2	17:15	328.2	309.5
5:30	312.5	267.5	17:30	328.2	314.1
6:45	312.5	267.2	17:45	328.2	319
6:00	328.2	265.6	18:00	328.2	329.6
6:15	328.2	268.5	18:15	328.2	339.4
6:30	328.2	271.6	18:30	328.2	341.3
6:45	328.2	281.3	18:45	328.2	337.2
7:00	328.2	289.6	19:00	328.2	338.1
7:15	328.2	296.6	19:15	328.2	334.3
7:30	328.2	305.4	19:30	328.2	331.4
7:45	328.2	307.8	19:45	328.2	328.7
8:00	328.2	307.4	20:00	328.2	324.1
8:15	328.2	306.5	20:15	328.2	321.3
8:30	328.2	306.3	20:30	328.2	319.7
8:45	328.2	307.2	20:45	328.2	321
9:00	314	268.3	21:00	314	321.9
9:15	312.5	309.2	21:15	312.5	321.5
9:30	312.5	303.9	21:30	312.5	320.9
9:45	312.5	301.6	21:45	312.5	314.3
10:00	312.5	300.2	22:00	312.5	312.5
10:15	312.5	294.5	22:15	312.5	305.7
10:30	312.5	291.4	22:30	312.5	302.7
10:45	312.5	287.5	22:45	312.5	297.7
11:00	312.5	289.9	23:00	312.5	292.3
11:15	312.5	292.2	23:15	312.5	282
11:30	312.5	294.3	23:30	312.5	277
11:45	312.5	292.8	23:45	312.5	270.3

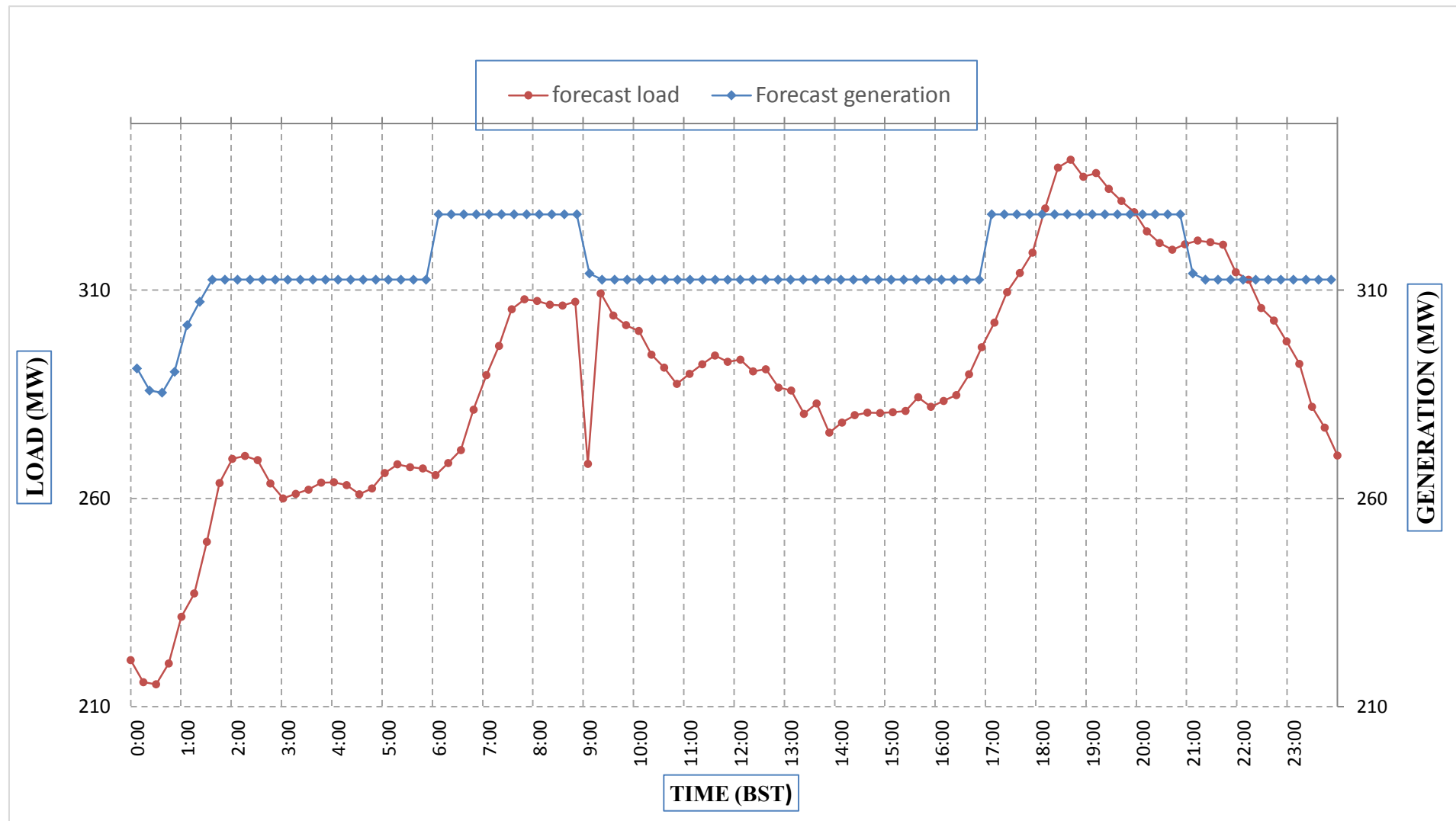
Yours faithfully,
 Jangchuk Selden



Message No.: Enter your message number
 From: Shift In-charge, Control Room

Date: 30-Jan-18
 Time: 11:03

Forecast Generation & Load Forecast for Tomorrow (31-Jan-2018).



Yours faithfully,
 Jangchuk Selden

	MW
Scheduled Peak Generation(31-Jan-2018).	328.20
Forecast Peak Load(31-Jan-2018).	341.30



Bhutan Power Corporation Ltd.
Bhutan Power System Operator
Thimphu: Bhutan

འབྲུག་རྒྱལ་ཁོ་ལས་འཛིན།



Message No.: Enter your message number
From: Shift In-charge, Control Room

Date: 31-Jan-18
Time: 12:14

To
 Managing Director, BPC. Email: gemtshering@bpc.bt
 Director, O&MD, DGPC. Email: director.umd@drukgreen.com
 General Manager, TD, BPC. Email: ktobgye@bpc.bt
 Advisor, BPC. Email: bharattamang@bpc.bt

Sub: Forecast Generation and Actual Generation of Dagachhu (30-Jan-2018).

Hours (BST)	Actual Frequency	Forecast Generation	Actual Generation	Hours (BST)	Actual Frequency	Forecast Generation	Actual Generation
0:00	49.89	19.8	19.66	12:00	49.98	19.8	20.12
0:15	49.97	19.8	19.65	12:15	49.98	19.8	20.12
0:30	50.01	19.8	19.64	12:30	50.02	19.8	20.10
0:45	50.00	19.8	19.63	12:45	50.07	19.8	20.10
1:00	50.02	19.8	19.63	13:00	50.10	19.8	20.12
1:15	49.99	19.8	19.65	13:15	50.01	19.8	20.11
1:30	49.98	19.8	19.64	13:30	49.99	19.8	20.11
1:45	50.00	19.8	19.65	13:45	49.97	19.8	20.13
2:00	50.00	19.8	19.72	14:00	49.96	19.8	20.10
2:15	50.00	19.8	19.72	14:15	49.88	19.8	20.03
2:30	50.00	19.8	19.79	14:30	49.88	19.8	20.03
2:45	50.00	19.8	19.79	14:45	49.93	19.8	20.03
3:00	50.01	19.8	20.00	15:00	49.97	19.8	20.02
3:15	50.00	19.8	20.00	15:15	49.96	19.8	20.05
3:30	50.01	19.8	19.98	15:30	49.96	19.8	20.02
3:45	50.00	19.8	20.00	15:45	49.92	19.8	19.79
4:00	49.98	19.8	20.00	16:00	50.00	19.8	19.80
4:15	50.03	19.8	19.99	16:15	49.94	19.8	19.81
4:30	50.00	19.8	20.00	16:30	49.98	19.8	19.80
4:45	50.00	19.8	20.04	16:45	49.96	19.8	19.79
5:00	50.02	19.8	20.04	17:00	49.94	19.8	19.80
5:15	49.97	19.8	20.03	17:15	49.87	19.8	19.81
5:30	49.91	19.8	20.04	17:30	49.87	19.8	19.79
6:45	49.96	19.8	20.01	17:45	49.94	19.8	19.82
6:00	49.99	19.8	20.01	18:00	50.01	19.8	19.84
6:15	49.97	19.8	20.50	18:15	49.98	19.8	19.79
6:30	49.90	19.8	20.02	18:30	49.89	19.8	19.79
6:45	49.87	19.8	20.01	18:45	49.90	19.8	19.84
7:00	49.96	19.8	20.00	19:00	49.95	19.8	19.82
7:15	49.92	19.8	20.03	19:15	49.95	19.8	19.81
7:30	49.98	19.8	20.00	19:30	49.94	19.8	19.83
7:45	50.00	19.8	19.99	19:45	49.99	19.8	19.82
8:00	50.00	19.8	20.00	20:00	49.97	19.8	19.82
8:15	49.98	19.8	20.12	20:15	49.99	19.8	19.84
8:30	50.00	19.8	20.11	20:30	50.02	19.8	19.79
8:45	50.00	19.8	20.12	20:45	50.01	19.8	19.81
9:00	49.93	19.8	20.13	21:00	49.89	19.8	19.84
9:15	49.93	19.8	20.10	21:15	49.97	19.8	19.72
9:30	49.93	19.8	20.10	21:30	50.00	19.8	19.73
9:45	50.01	19.8	20.10	21:45	50.01	19.8	19.73
10:00	49.90	19.8	20.12	22:00	49.87	19.8	19.70
10:15	49.91	19.8	20.12	22:15	49.98	19.8	19.73
10:30	49.92	19.8	20.12	22:30	49.95	19.8	19.73
10:45	49.94	19.8	20.11	22:45	49.98	19.8	19.71
11:00	50.01	19.8	20.11	23:00	50.01	19.8	19.73
11:15	49.99	19.8	20.11	23:15	49.93	19.8	19.71
11:30	49.96	19.8	20.12	23:30	49.92	19.8	19.74
11:45	50.02	19.8	20.12	23:45	49.97	19.8	19.72

Yours faithfully,
 Jangchuk Selden



འབྲུག་གྲོག་ཚེ་ལས་འཛིན།

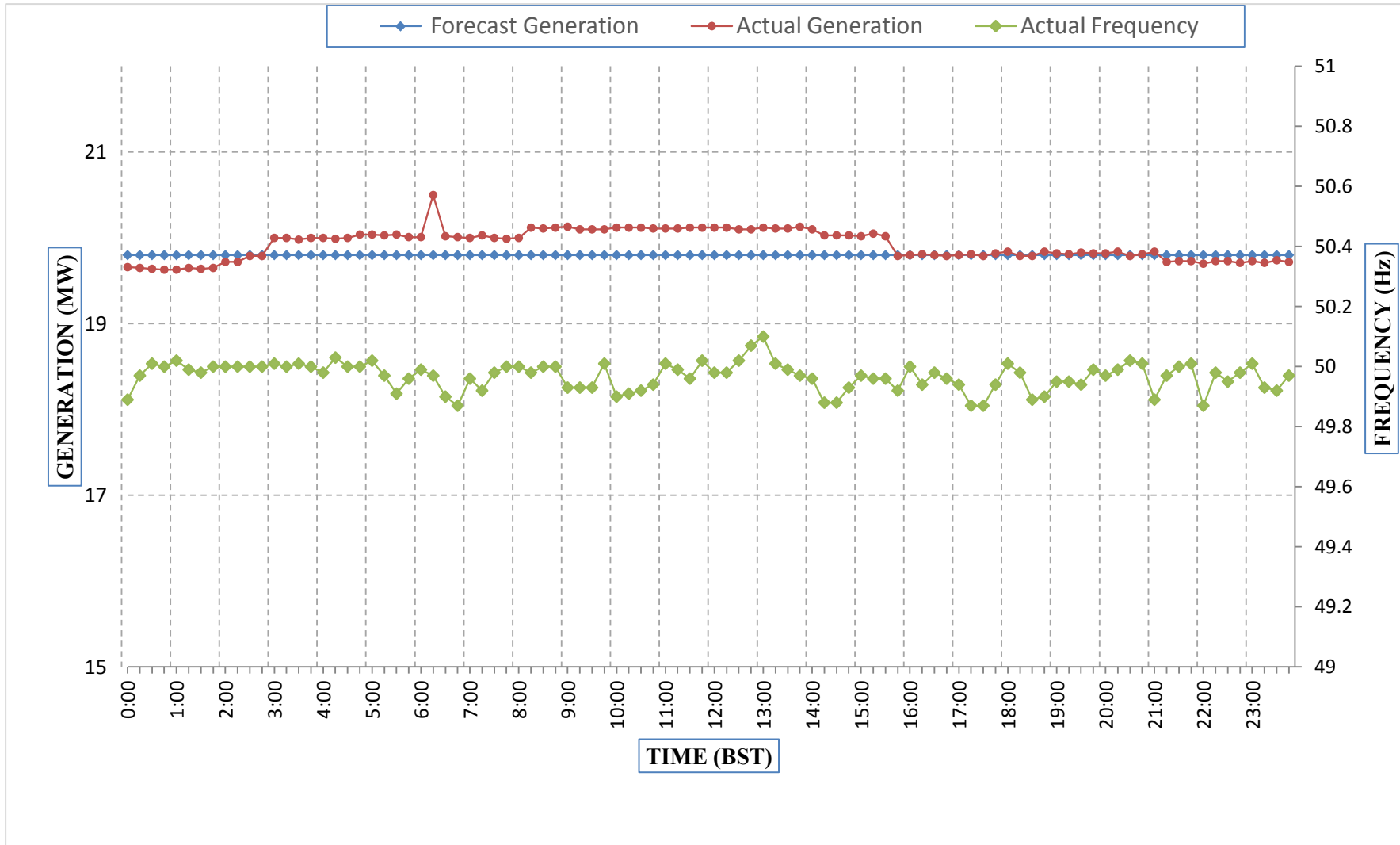
Bhutan Power Corporation Ltd.
Bhutan Power System Operator
Thimphu: Bhutan



Message No.: Enter your message number
From: Shift In-charge, Control Room

Date: 30-Jan-18
Time: 11:03

Forecast Generation & Actual Generation of Dagachhu(29-Jan-2018).



Yours faithfully,
Jangchuk Selden