



འབྲུག་གྲོག་མེ་ལས་འཛིན།

Bhutan Power Corporation Ltd.
Bhutan Power System Operator
Thimphu: Bhutan



Message No.: Enter your message number
From: Shift In-charge, Control Room

Date: 30-Jan-18
Time: 11:03

To
Managing Director, BPC. Email: gemtshering@bpc.bt
Director, O&MD, DGPC. Email: director.umd@drukgreen.com
General Manager, TD, BPC. Email: ktobgye@bpc.bt
General Manager, DCSD, BPC. Email: sandeeprai@bpc.bt

Sub: **Load Generation Balance Report of Yesterday (29-Jan-2018).**

Hours (BST)	Forecast		Actual		Hours (BST)	Forecast		Actual	
	Generation	Load	Generation	Load		Generation	Load	Generation	Load
0:00	299.9	237.8	305.4	268.4	12:00	299.9	289.2	290.28	283.20
0:15	299.9	222.1	306.0	264.2	12:15	299.9	289.1	290.66	285.02
0:30	299.9	213.7	306.0	263.8	12:30	299.9	290.4	284.96	281.13
0:45	299.9	213	305.4	259.1	12:45	299.9	286.3	284.70	280.03
1:00	299.9	214.5	305.3	256.9	13:00	299.9	281.7	285.21	273.21
1:15	299.9	215.2	305.3	261.1	13:15	299.9	277.3	294.55	273.34
1:30	299.9	213	306.6	259.4	13:30	299.9	282	290.34	274.34
1:45	299.9	224.5	305.8	252.9	13:45	299.9	281.1	290.00	275.17
2:00	299.9	261.3	305.8	254.1	14:00	299.9	279	291.49	271.55
2:15	299.9	265.1	306.2	256.0	14:15	299.9	280.5	280.20	265.59
2:30	299.9	258.6	305.8	258.8	14:30	299.9	279.6	280.55	264.37
2:45	299.9	256.9	306.7	255.3	14:45	299.9	278.4	279.02	269.63
3:00	299.9	253.2	305.6	257.1	15:00	299.9	279.5	279.95	272.59
3:15	299.9	254.5	306.1	257.3	15:15	299.9	282.6	280.80	274.55
3:30	299.9	256.3	306.5	255.8	15:30	299.9	284.2	280.80	256.52
3:45	299.9	256.5	305.7	251.2	15:45	299.9	283.7	279.73	274.15
4:00	299.9	258.1	305.6	255.4	16:00	299.9	282	280.23	276.75
4:15	299.9	257.9	302.3	252.3	16:15	299.9	286.4	280.09	281.99
4:30	299.9	255.2	302.9	251.7	16:30	299.9	285.6	280.55	281.84
4:45	299.9	255.7	302.8	251.9	16:45	299.9	294.2	280.89	285.00
5:00	299.9	257.6	302.4	253.9	17:00	313.9	297	280.73	284.28
5:15	299.9	259.6	293.3	250.5	17:15	313.9	304.3	281.00	287.91
5:30	299.9	261.4	289.8	256.0	17:30	313.9	308	280.71	294.97
5:45	299.9	262.5	292.0	253.3	17:45	313.9	313.5	280.44	303.01
6:00	313.9	265.7	291.4	252.8	18:00	313.9	325.1	365.31	311.44
6:15	313.9	269.1	290.6	260.0	18:15	313.9	333	349.96	318.62
6:30	313.9	273.4	291.7	258.2	18:30	313.9	336.2	349.43	333.61
6:45	313.9	281.7	291.0	266.8	18:45	313.9	332.9	352.31	333.54
7:00	313.9	293.3	291.7	276.7	19:00	313.9	333.3	284.10	331.05
7:15	313.9	300	291.2	287.1	19:15	313.9	330	285.59	335.59
7:30	313.9	307.9	290.8	296.3	19:30	313.9	325.9	286.70	335.60
7:45	313.9	309.4	290.9	300.2	19:45	313.9	324	302.02	330.90
8:00	313.9	310.7	291.0	304.2	20:00	313.9	322.1	307.54	328.63
8:15	313.9	310.9	290.7	304.0	20:15	313.9	319.6	308.98	319.11
8:30	313.9	305.8	305.1	308.5	20:30	313.9	322.7	308.70	313.77
8:45	313.9	307.6	306.0	300.5	20:45	313.9	325	309.48	316.03
9:00	313.9	276.9	304.0	301.5	21:00	313.9	325.7	308.77	310.98
9:15	299.9	311.9	305.32	301.09	21:15	299.9	324.7	308.42	314.48
9:30	299.9	305.3	303.98	293.97	21:30	299.9	320.7	294.64	312.63
9:45	299.9	299.8	304.98	295.39	21:45	299.9	311.6	294.63	305.44
10:00	299.9	299.8	304.68	293.23	22:00	299.9	306.1	293.53	299.98
10:15	299.9	294	304.50	288.62	22:15	299.9	299.9	294.16	294.98
10:30	299.9	288.5	304.50	287.19	22:30	299.9	294.2	292.59	286.45
10:45	299.9	292.2	290.66	281.70	22:45	299.9	289.1	290.71	283.91
11:00	299.9	291.7	290.71	281.06	23:00	299.9	282.2	288.77	278.64
11:15	299.9	293.6	290.55	282.80	23:15	299.9	272	288.45	274.77
11:30	299.9	296	291.18	282.91	23:30	299.9	271.6	288.04	270.70
11:45	299.9	291.1	305.70	288.63	23:45	299.9	255.8	287.93	264.04

288.39		258.18	
Coincidental peak load of Day(Last year):			
223.5	29-Jan-17		
Maximum Load till date:			
362.09	14-Nov-17		

Yours faithfully
jangchuk Selden



ལྷན་སྐྱོད་ལྷན་ཁག་ལས་འཛིན།

Bhutan Power Corporation Ltd.
Bhutan Power System Operator
Thimphu: Bhutan



Message No.: Enter your message number
From: Shift In-charge, Control Room

Date: 30-Jan-18
Time: 11:03

To
Managing Director, BPC. Email: gemtshering@bpc.bt
Director, O&MD, DGPC. Email: director.omid@drukgreen.com
General Manager, TD, BPC. Email: thinleygyeltshen@bpc.bt
General Manager, DCSD, BPC. Email: sandeeprai@bpc.bt

Sub: Load Generation Balance Report of Today (30-Jan-2018).

Hours (BST)	Forecast		Actual	
	Generation	Load	Generation	Load
0:00	285.7	245.2	287.4	255.5
0:15	285.7	234.3	307.2	253.3
0:30	285.7	228.4	307.4	259.7
0:45	285.7	225.4	308.5	259.0
1:00	285.7	218.6	308.4	258.2
1:15	285.7	219.2	308.8	256.0
1:30	285.7	222.3	307.1	253.8
1:45	285.7	234.1	306.9	249.1
2:00	285.7	265.4	307.8	242.8
2:15	285.7	268.6	307.6	245.3
2:30	285.7	265.7	307.4	246.7
2:45	285.7	266.9	306.7	245.4
3:00	285.7	266.7	306.8	240.8
3:15	285.7	268.7	304.7	245.4
3:30	285.7	270.7	305.1	244.9
3:45	285.7	271.8	304.1	246.8
4:00	285.7	273.9	304.3	247.6
4:15	285.7	272.7	303.8	242.5
4:30	285.7	271.1	297.5	246.7
4:45	285.7	270.7	303.9	252.5
5:00	285.7	273.5	303.3	248.1
5:15	285.7	275.1	299.8	258.6
5:30	285.7	273.5	298.8	264.0
5:45	285.7	274.2	298.5	260.5
6:00	298.8	270.6	298.1	260.5
6:15	298.8	271.9	298.6	265.3
6:30	298.8	274.6	311.6	272.1
6:45	298.8	282.4	310.5	281.8
7:00	298.8	291.8	312.5	281.4
7:15	298.8	296.4	313.6	300.4
7:30	298.8	306	314.8	310.9
7:45	298.8	307	313.9	308.6
8:00	298.8	307.8	314.7	312.4
8:15	298.8	306.6	314.4	307.0
8:30	298.8	304.5	313.7	307.1
8:45	298.8	302.5	312.6	299.0
9:00	298.8	266.8	312.2	303.3

Coincidental peak load of Day(Last year):	
253.23	30-Jan-18
Maximum Load till date:	
362.09	14-Nov-17

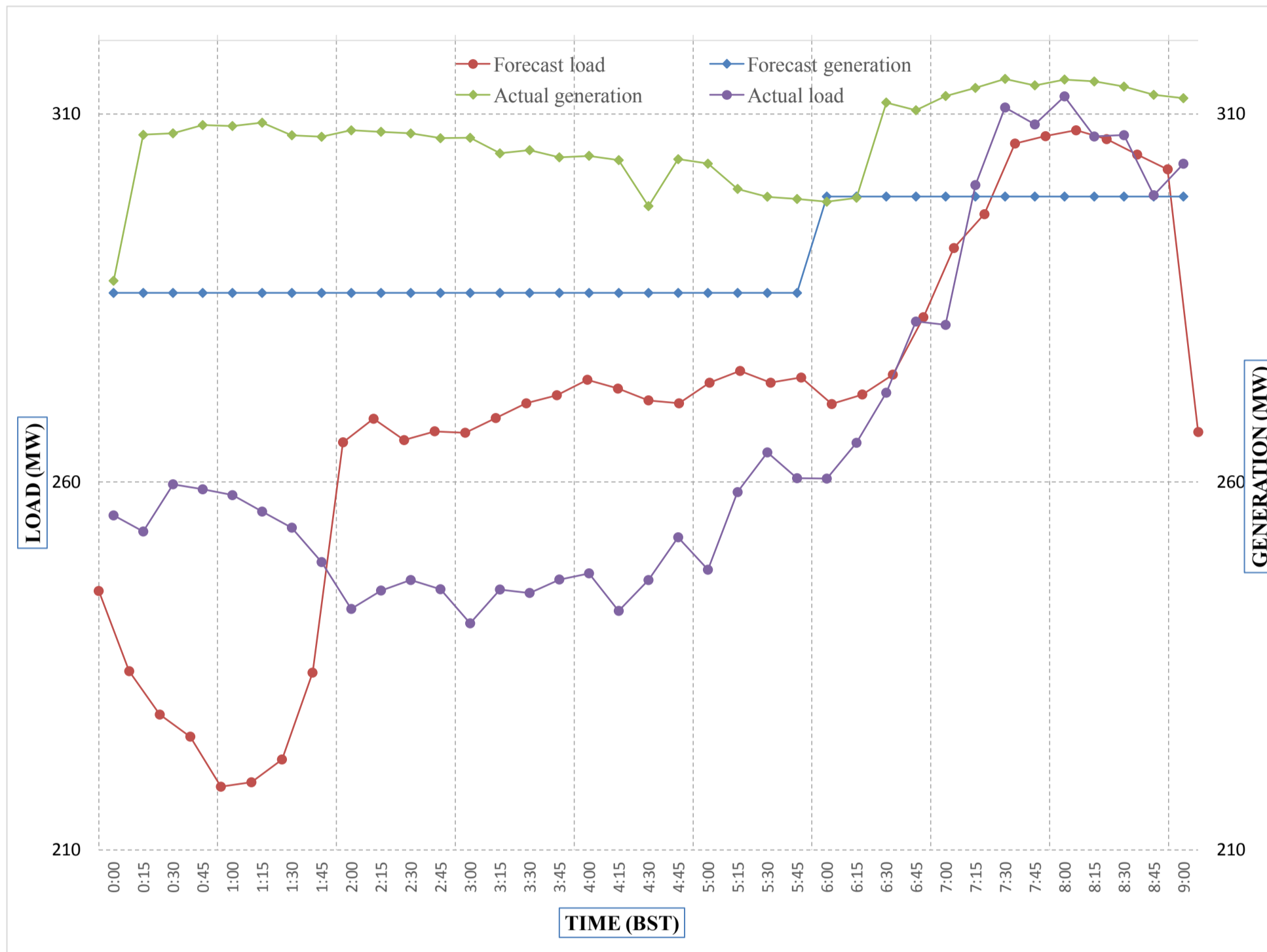
Yours faithfully,
Jangchuk Selden



Message No.: Enter your message number
 From: Shift In-charge, Control Room

Date: 30-Jan-18
 Time: 11:03

Forecast Generation & Load with Actual Generation & Load of Today from 00:00hrs to 09:00hrs(30-Jan-2018).



Yours faithfully
 jangchuk Selden



འབྲུག་གྲོག་ལེན་ལྷན་ཁག་ལཱ་བློན་པོ།
Bhutan Power Corporation Ltd.
Bhutan Power System Operator
 Thimphu: Bhutan



Message No.: Enter your message number **Date:** 30-Jan-18
From: Shift In-charge, Control Room **Time:** 11:03

To
 Managing Director, BPC. Email: gemtshering@bpc.bt
 Director, O&MD, DGPC. Email: director.omb@drukgreen.com
 General Manager, TD, BPC. Email: ktobgye@bpc.bt
 Advisor, BPC. Email: bharattamang@bpc.bt

Sub: **Load Generation Balance Report of Tomorrow (31-Jan-2018).**

Hours (BST)	Forecast		Hours (BST)	Forecast	
	Generation	Load		Generation	Load
0:00	332.8	268.1	12:00	312.3	287
0:15	322.9	252.9	12:15	312.3	285.9
0:30	305.4	235.4	12:30	312.3	287.4
0:45	298	228	12:45	312.3	282.6
1:00	286.7	216.7	13:00	312.3	281.2
1:15	289.2	219.2	13:15	312.3	276.7
1:30	294.2	224.2	13:30	312.3	278.2
1:45	303.8	233.8	13:45	312.3	277.2
2:00	312.3	254	14:00	312.3	274.7
2:15	312.3	269.7	14:15	312.3	275.7
2:30	312.3	269.3	14:30	312.3	275.9
2:45	312.3	265.1	14:45	312.3	276.5
3:00	312.3	264.4	15:00	312.3	277.4
3:15	312.3	266.1	15:15	312.3	278.1
3:30	312.3	266.9	15:30	312.3	280.5
3:45	312.3	267.6	15:45	312.3	279
4:00	312.3	268.6	16:00	312.3	282.2
4:15	312.3	267.2	16:15	312.3	283.3
4:30	312.3	264.8	16:30	312.3	286.1
4:45	312.3	265.3	16:45	312.3	291.7
5:00	312.3	269.5	17:00	327.9	296.7
5:15	312.3	269.4	17:15	327.9	304.2
5:30	312.3	269.4	17:30	327.9	308.5
6:45	312.3	269.3	17:45	327.9	313.1
6:00	327.9	267.1	18:00	327.9	325.2
6:15	327.9	269.2	18:15	327.9	335
6:30	327.9	270.4	18:30	327.9	336.3
6:45	327.9	278.5	18:45	327.9	333.5
7:00	327.9	289.2	19:00	327.9	334
7:15	327.9	294.6	19:15	327.9	332.4
7:30	327.9	303	19:30	327.9	328.9
7:45	327.9	306.6	19:45	327.9	326.2
8:00	327.9	308	20:00	327.9	321.1
8:15	327.9	306.8	20:15	327.9	319
8:30	327.9	304.9	20:30	327.9	318.4
8:45	327.9	302.5	20:45	327.9	319
9:00	313.7	274.3	21:00	313.7	320.8
9:15	312.3	307.8	21:15	312.3	322.1
9:30	312.3	302.2	21:30	312.3	322.2
9:45	312.3	299.9	21:45	312.3	316.5
10:00	312.3	297.8	22:00	312.3	315.3
10:15	312.3	293.5	22:15	312.3	308.7
10:30	312.3	287.4	22:30	312.3	303.1
10:45	312.3	288.2	22:45	312.3	294.4
11:00	312.3	287.6	23:00	312.3	283.3
11:15	312.3	289	23:15	312.3	263.2
11:30	312.3	291.1	23:30	312.3	245.7
11:45	312.3	288	23:45	301.8	231.8

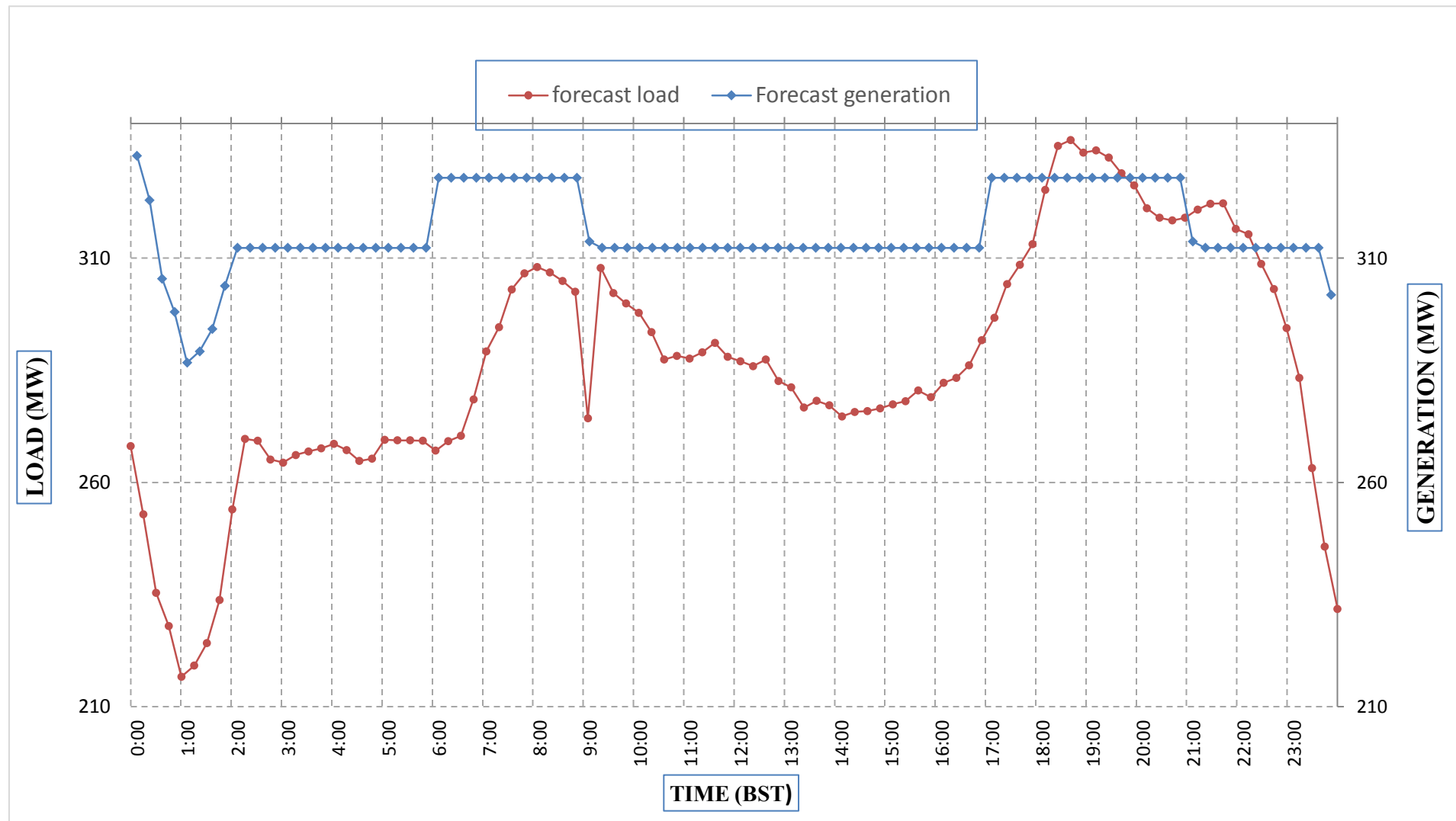
Yours faithfully,
 Jangchuk Selden



Message No.: Enter your message number
 From: Shift In-charge, Control Room

Date: 30-Jan-18
 Time: 11:03

Forecast Generation & Load Forecast for Tomorrow (31-Jan-2018).



Yours faithfully,
 jangchuk Selden

	MW
Scheduled Peak Generation(31-Jan-2018).	332.80
Forecast Peak Load(31-Jan-2018).	336.30



Bhutan Power Corporation Ltd.
 Bhutan Power System Operator
 Thimphu: Bhutan

འབྲུག་རྒྱལ་ཁོ་ལས་འཛིན།



Message No.: Enter your message number
From: Shift In-charge, Control Room

Date: 30-Jan-18
Time: 11:03

To
 Managing Director, BPC. Email: gemtshering@bpc.bt
 Director, O&MD, DGPC. Email: director.umd@drukgreen.com
 General Manager, TD, BPC. Email: ktobgye@bpc.bt
 Advisor, BPC. Email: bharattamang@bpc.bt

Sub: Forecast Generation and Actual Generation of Dagachhu (29-Jan-2018).

Hours (BST)	Actual Frequency	Forecast Generation	Actual Generation	Hours (BST)	Actual Frequency	Forecast Generation	Actual Generation
0:00	49.98	20	19.99	12:00	49.92	20	19.85
0:15	49.96	20	20.00	12:15	49.97	20	19.85
0:30	50.00	20	19.52	12:30	49.99	20	19.83
0:45	49.99	20	19.54	12:45	49.97	20	19.84
1:00	49.99	20	19.52	13:00	50.03	20	19.81
1:15	49.99	20	19.52	13:15	50.10	20	19.83
1:30	50.00	20	19.54	13:30	50.00	20	19.84
1:45	50.04	20	19.51	13:45	49.98	20	19.85
2:00	49.97	20	19.84	14:00	49.99	20	19.84
2:15	49.97	20	19.85	14:15	50.01	20	19.86
2:30	49.97	20	19.85	14:30	49.98	20	19.83
2:45	49.98	20	19.84	14:45	50.03	20	19.83
3:00	49.99	20	19.84	15:00	50.01	20	19.85
3:15	50.02	20	19.83	15:15	50.03	20	19.86
3:30	49.98	20	19.84	15:30	49.94	20	19.84
3:45	50.01	20	19.86	15:45	49.93	20	19.83
4:00	49.97	20	19.85	16:00	49.92	20	19.84
4:15	49.98	20	19.85	16:15	50.02	20	19.85
4:30	49.96	20	19.84	16:30	49.97	20	19.84
4:45	50.01	20	19.85	16:45	49.96	20	19.86
5:00	49.99	20	19.86	17:00	49.99	20	19.65
5:15	49.94	20	19.84	17:15	50.01	20	19.63
5:30	49.93	20	19.84	17:30	49.94	20	19.65
6:45	49.94	20	19.84	17:45	49.90	20	19.62
6:00	49.99	20	19.85	18:00	50.00	20	19.63
6:15	49.93	20	19.84	18:15	49.97	20	19.64
6:30	49.87	20	19.84	18:30	49.92	20	19.63
6:45	49.94	20	19.84	18:45	49.92	20	19.63
7:00	49.91	20	19.83	19:00	49.99	20	19.65
7:15	49.97	20	19.84	19:15	49.99	20	19.64
7:30	49.96	20	19.85	19:30	50.03	20	19.65
7:45	49.97	20	19.83	19:45	50.02	20	19.65
8:00	49.94	20	19.85	20:00	50.00	20	19.64
8:15	49.93	20	19.85	20:15	49.99	20	19.64
8:30	49.94	20	19.81	20:30	50.01	20	19.63
8:45	49.95	20	19.84	20:45	49.98	20	19.66
9:00	49.94	20	19.84	21:00	49.98	20	19.64
9:15	49.89	20	19.84	21:15	49.95	20	19.65
9:30	49.97	20	19.84	21:30	49.99	20	19.65
9:45	50.01	20	19.84	21:45	50.01	20	19.65
10:00	49.94	20	19.85	22:00	50.08	20	19.64
10:15	49.98	20	19.83	22:15	49.96	20	19.64
10:30	49.99	20	19.86	22:30	50.04	20	19.65
10:45	50.02	20	19.84	22:45	49.93	20	19.66
11:00	49.96	20	19.83	23:00	49.99	20	19.64
11:15	49.92	20	19.85	23:15	50.01	20	19.64
11:30	49.91	20	19.84	23:30	49.99	20	19.63
11:45	49.91	20	19.88	23:45	49.96	20	19.65

Yours faithfully,
 Jangchuk Selden



འབྲུག་གློག་མེ་ལས་འཛིན།

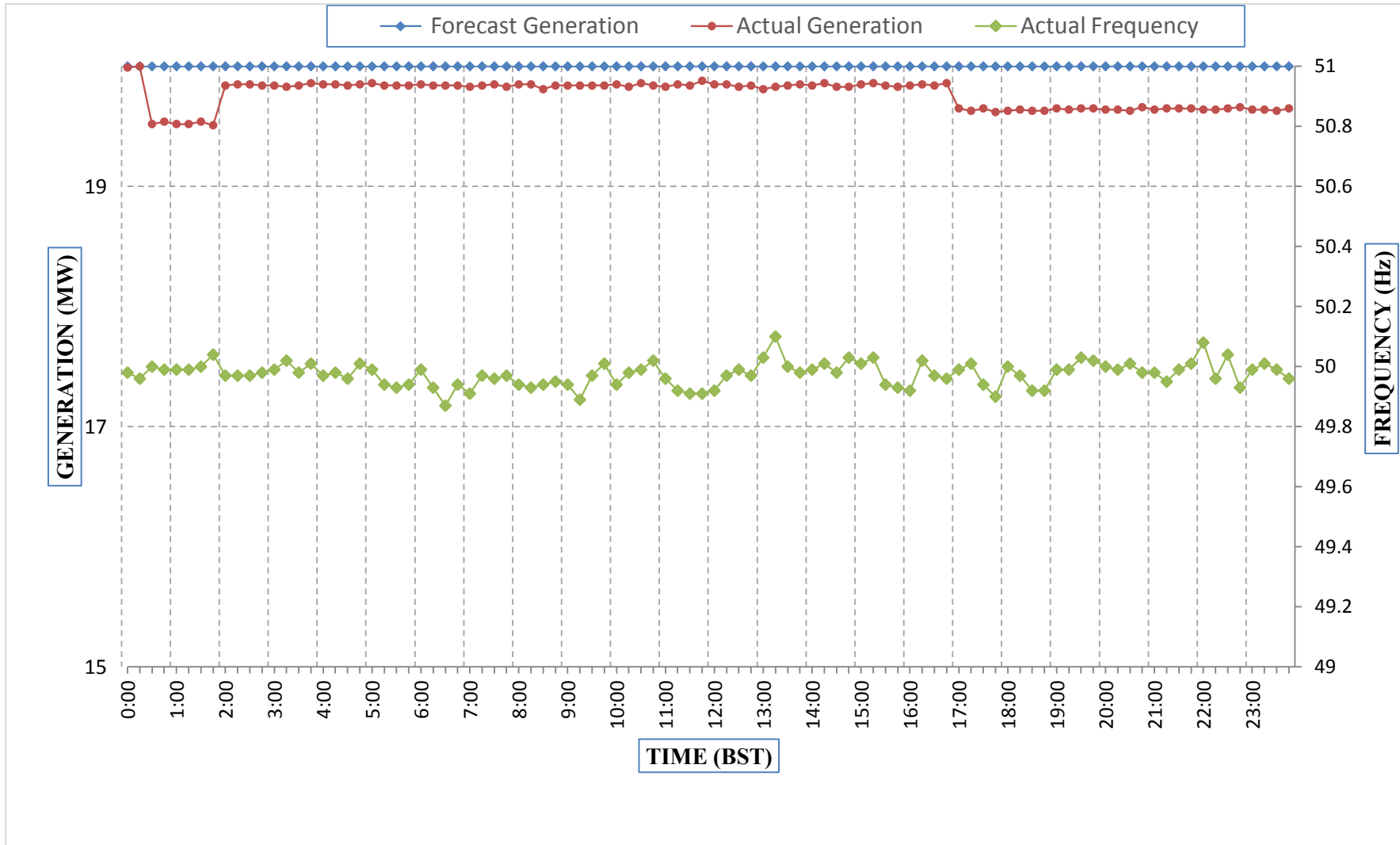
Bhutan Power Corporation Ltd.
Bhutan Power System Operator
Thimphu: Bhutan



Message No.: Enter your message number
From: Shift In-charge, Control Room

Date: 30-Jan-18
Time: 11:03

Forecast Generation & Actual Generation of Dagachhu(29-Jan-2018).



Yours faithfully,
jangchuk Selden