



ཕྱག་ལུགས་ལེ་ལས་འཛིན།

Bhutan Power Corporation Ltd.
Bhutan Power System Operator
Thimphu: Bhutan



Message No.: Enter your message number
From: Shift In-charge, Control Room

Date: 29-Jan-18
Time: 10:36

To
Managing Director, BPC. Email: gemtshering@bpc.bt
Director, O&MD, DGPC. Email: director.omid@drukgreen.com
General Manager, TD, BPC. Email: ktobgye@bpc.bt
General Manager, DCSD, BPC. Email: sandeeprai@bpc.bt

Sub: **Load Generation Balance Report of Yesterday (28-Jan-2018).**

Hours (BST)	Forecast		Actual		Hours (BST)	Forecast		Actual	
	Generation	Load	Generation	Load		Generation	Load	Generation	Load
0:00	296.8	226.1	330.7	273.0	12:00	296.8	283.2	304.95	287.25
0:15	296.8	220.7	330.9	271.9	12:15	296.8	282.9	305.59	285.08
0:30	296.8	220.9	331.7	271.3	12:30	296.8	287.8	305.05	283.73
0:45	296.8	227.3	331.0	260.3	12:45	296.8	283.3	304.20	277.23
1:00	296.8	229.2	330.7	263.5	13:00	296.8	278.4	303.65	283.25
1:15	296.8	241.6	330.5	265.1	13:15	296.8	274.5	303.11	283.23
1:30	296.8	246.5	330.4	265.7	13:30	296.8	277.4	302.73	279.61
1:45	296.8	251.2	329.5	264.5	13:45	296.8	277.8	303.13	279.53
2:00	296.8	255.6	328.0	256.3	14:00	296.8	276.9	302.98	279.98
2:15	296.8	253.4	326.1	257.1	14:15	296.8	277.4	302.64	275.18
2:30	296.8	254.1	327.0	256.6	14:30	296.8	274.8	303.91	282.10
2:45	296.8	253.9	323.6	257.4	14:45	296.8	275.8	303.48	281.88
3:00	296.8	252.6	320.6	256.3	15:00	296.8	278.2	301.08	281.82
3:15	296.8	255	321.4	259.6	15:15	296.8	278.3	302.42	270.02
3:30	296.8	257.8	320.2	259.3	15:30	296.8	280.9	302.77	280.14
3:45	296.8	257.2	320.3	261.8	15:45	296.8	280.1	302.17	272.70
4:00	296.8	259.3	319.9	262.5	16:00	296.8	280.6	303.62	283.41
4:15	296.8	258.3	319.6	263.9	16:15	296.8	283.9	302.51	285.89
4:30	296.8	258.6	318.4	261.1	16:30	296.8	284.6	302.79	287.52
4:45	296.8	257.1	319.4	260.8	16:45	296.8	293.3	302.87	292.36
5:00	296.8	258.8	317.7	264.0	17:00	296.8	297.3	303.07	296.05
5:15	296.8	261.7	323.7	264.6	17:15	310.9	303.5	310.55	304.45
5:30	296.8	263.1	323.2	266.3	17:30	310.9	310.3	317.11	307.25
5:45	296.8	264.3	303.6	272.0	17:45	310.9	314.1	316.94	321.34
6:00	297.1	266.2	303.3	266.1	18:00	310.9	326.6	317.21	326.16
6:15	310.9	270.1	303.0	272.4	18:15	310.9	334	317.27	332.51
6:30	310.9	273.2	303.0	278.2	18:30	310.9	336.7	316.70	337.79
6:45	310.9	280.4	303.3	284.5	18:45	310.9	334.1	316.72	332.68
7:00	310.9	291	303.8	290.4	19:00	310.9	334.3	316.77	330.48
7:15	310.9	297.3	303.9	284.1	19:15	310.9	331.2	314.89	329.62
7:30	310.9	306.1	303.7	295.4	19:30	310.9	327.3	317.95	326.74
7:45	310.9	307.7	303.9	300.5	19:45	310.9	325.1	317.79	323.96
8:00	310.9	306	303.5	295.2	20:00	310.9	324.1	317.45	316.47
8:15	310.9	303	303.7	279.5	20:15	310.9	320.2	318.13	314.29
8:30	310.9	302.4	302.4	290.5	20:30	310.9	317.1	318.03	314.16
8:45	310.9	293.7	302.6	280.1	20:45	310.9	314.4	317.73	311.60
9:00	310.9	263.7	302.5	293.5	21:00	310.9	314.3	317.81	313.12
9:15	296.8	308.9	306.86	302.09	21:15	296.8	324.4	304.45	300.84
9:30	296.8	301.8	308.60	302.20	21:30	296.8	321.4	305.91	310.18
9:45	296.8	297.4	308.07	301.61	21:45	296.8	307.1	306.27	304.59
10:00	296.8	296.1	308.52	301.02	22:00	296.8	300.5	306.07	297.52
10:15	296.8	291.9	308.45	297.27	22:15	296.8	295.1	307.04	293.24
10:30	296.8	291.9	308.16	296.02	22:30	296.8	289.6	305.80	285.24
10:45	296.8	293.3	308.23	292.17	22:45	296.8	285.5	306.75	277.50
11:00	296.8	290.3	306.88	284.09	23:00	296.8	279	306.03	275.94
11:15	296.8	290.7	307.14	282.91	23:15	296.8	269.1	306.36	269.48
11:30	296.8	294	305.66	287.40	23:30	296.8	270.5	305.98	263.12
11:45	296.8	286.8	305.70	288.63	23:45	296.8	245.9	305.41	265.88

Yours faithfully
Karma Yangden

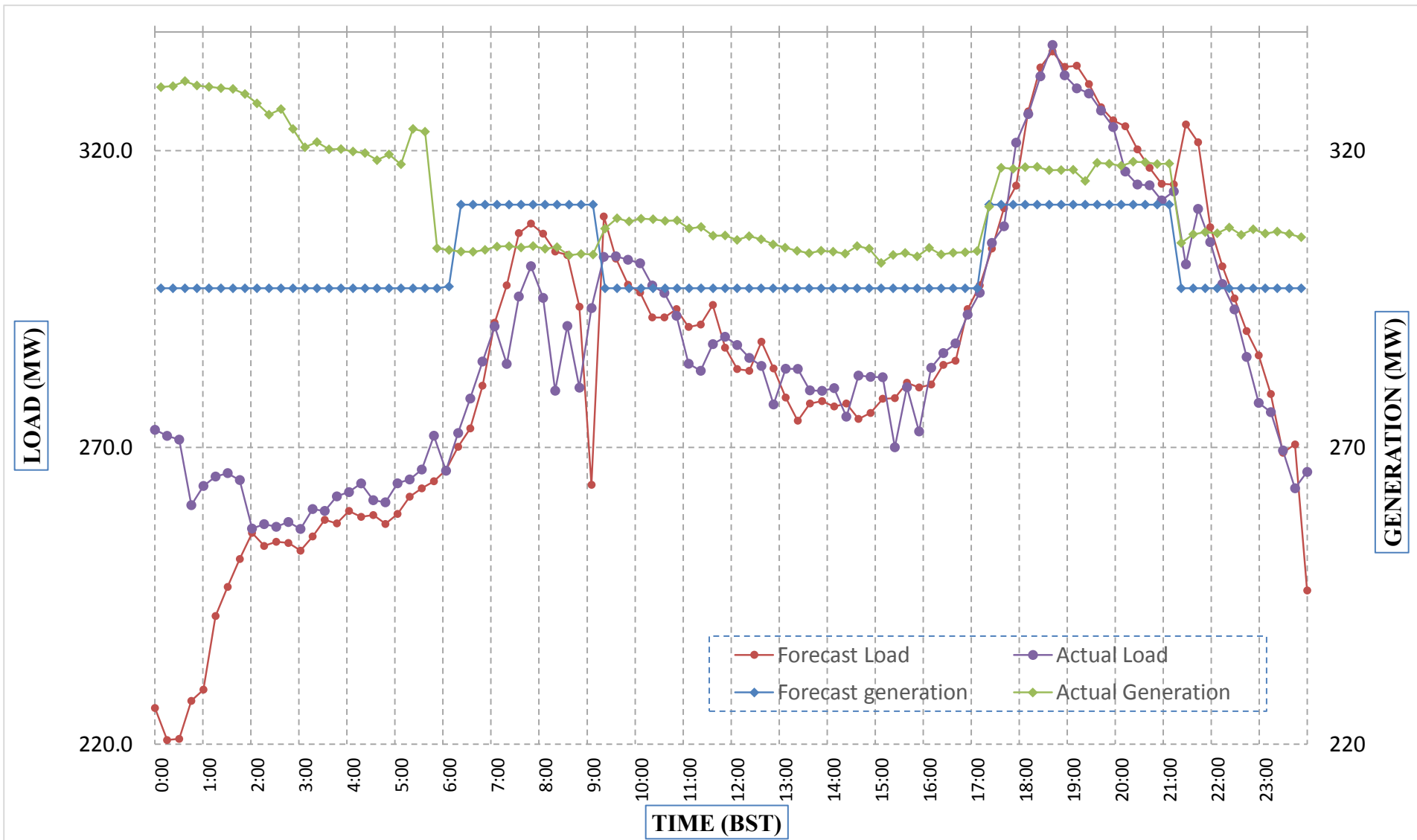
Coincidental peak load of Day(Last year):	
248.16	28-Jan-17
Maximum Load till date:	
362.09	14-Nov-17



Message No.: Enter your message number
 From: Shift In-charge, Control Room

Date: 29-Jan-18
 Time: 10:36

Forecast Generation & Load with Actual Generation & Load (28-Jan-2018).



Yours faithfully,
 Karma Yangden

	MW	Coincidental peak load of Day(Last year):	
Peak Co-incident Generation(28-Jan-2018).	331.71	248.16	28-Jan-17
Peak Co-incident Load(28-Jan-2018).	337.79		
		Maximum Load till date:	
		362.09	14-Nov-17



ཕྱག་ལུགས་ལེ་ལས་འཛིན།

Bhutan Power Corporation Ltd.
Bhutan Power System Operator
Thimphu: Bhutan



Message No.: Enter your message number
From: Shift In-charge, Control Room

Date: 29-Jan-18
Time: 10:36

To
Managing Director, BPC. Email: gemtshering@bpc.bt
Director, O&MD, DGPC. Email: director.umd@drukgreen.com
General Manager, TD, BPC. Email: thinleygyeltshen@bpc.bt
General Manager, DCSD, BPC. Email: sandeeprai@bpc.bt

Sub: Load Generation Balance Report of Today (29-Jan-2018).

Hours (BST)	Forecast		Actual	
	Generation	Load	Generation	Load
0:00	299.9	237.8	305.4	268.4
0:15	299.9	222.1	306.0	264.2
0:30	299.9	213.7	306.0	263.8
0:45	299.9	213	305.4	259.1
1:00	299.9	204.2	305.3	256.9
1:15	299.9	203.4	305.3	261.1
1:30	299.9	208.7	306.6	259.4
1:45	299.9	224.5	305.8	252.9
2:00	299.9	261.3	305.8	254.1
2:15	299.9	265.1	306.2	256.0
2:30	299.9	258.6	305.8	258.8
2:45	299.9	256.9	306.7	255.3
3:00	299.9	253.2	305.6	257.1
3:15	299.9	254.5	306.1	257.3
3:30	299.9	256.3	306.5	255.8
3:45	299.9	256.5	305.7	251.2
4:00	299.9	258.1	305.6	255.4
4:15	299.9	257.9	302.3	252.3
4:30	299.9	255.2	302.9	251.7
4:45	299.9	255.7	302.8	251.9
5:00	299.9	257.6	302.4	253.9
5:15	299.9	259.6	293.3	250.5
5:30	299.9	261.4	289.8	256.0
5:45	299.9	262.5	292.0	253.3
6:00	313.9	265.7	291.4	252.8
6:15	313.9	269.1	290.6	260.0
6:30	313.9	273.4	291.7	258.2
6:45	313.9	281.7	291.0	266.8
7:00	313.9	293.3	291.7	276.7
7:15	313.9	300	291.2	287.1
7:30	313.9	307.9	290.8	296.3
7:45	313.9	309.4	290.9	300.2
8:00	313.9	310.7	291.0	304.2
8:15	313.9	310.9	290.7	304.0
8:30	313.9	305.8	305.1	308.5
8:45	313.9	307.6	306.0	300.5
9:00	313.9	276.9	304.0	301.5

Coincidental peak load of Day(Last year):	
223.5	29-Jan-18
Maximum Load till date:	
362.09	14-Nov-17

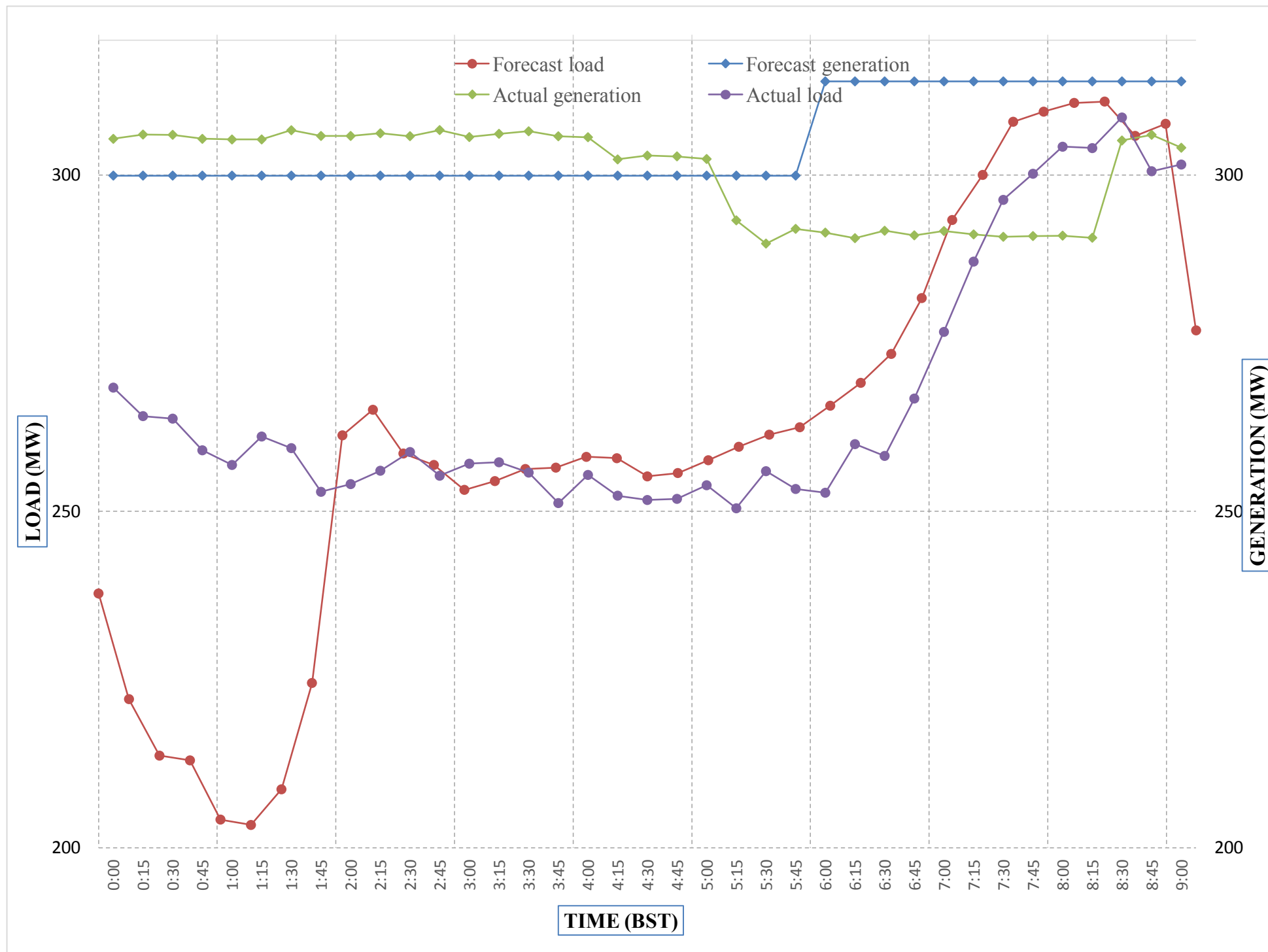
Yours faithfully,
Karma Yangden



Message No.: Enter your message number
 From: Shift In-charge, Control Room

Date: 29-Jan-18
 Time: 10:36

Forecast Generation & Load with Actual Generation & Load of Today from 00:00hrs to 09:00hrs(29-Jan-2018).



Yours faithfully
 Karma Yangden



འབྲུག་གྲོག་ལེན་ལེ་སྒོལ་ལེ་སྒོལ་།
Bhutan Power Corporation Ltd.
Bhutan Power System Operator
 Thimphu: Bhutan



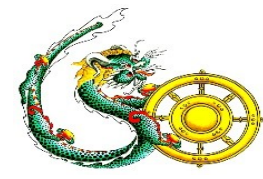
Message No.: Enter your message number **Date:** 29-Jan-18
From: Shift In-charge, Control Room **Time:** 10:36

To
 Managing Director, BPC. Email: gemtshering@bpc.bt
 Director, O&MD, DGPC. Email: director.omb@drukgreen.com
 General Manager, TD, BPC. Email: ktobgye@bpc.bt
 Advisor, BPC. Email: bharattamang@bpc.bt

Sub: **Load Generation Balance Report of Tomorrow (30-Jan-2018).**

Hours (BST)	Forecast		Hours (BST)	Forecast	
	Generation	Load		Generation	Load
0:00	285.7	245.2	12:00	285.7	288.7
0:15	285.7	234.3	12:15	285.7	288.5
0:30	285.7	228.4	12:30	285.7	289.4
0:45	285.7	225.4	12:45	285.7	284.4
1:00	285.7	218.6	13:00	285.7	282.6
1:15	285.7	219.2	13:15	285.7	278.1
1:30	285.7	222.3	13:30	285.7	279.3
1:45	285.7	234.1	13:45	285.7	280.9
2:00	285.7	265.4	14:00	285.7	279.1
2:15	285.7	268.6	14:15	285.7	279.3
2:30	285.7	265.7	14:30	285.7	278.4
2:45	285.7	266.9	14:45	285.7	279.5
3:00	285.7	266.7	15:00	285.7	278.5
3:15	285.7	268.7	15:15	285.7	281.1
3:30	285.7	270.7	15:30	285.7	284.5
3:45	285.7	271.8	15:45	285.7	281.2
4:00	285.7	273.9	16:00	285.7	282.9
4:15	285.7	272.7	16:15	285.7	285
4:30	285.7	271.1	16:30	285.7	286.3
4:45	285.7	270.7	16:45	285.7	294.3
5:00	285.7	273.5	17:00	285.7	298.2
5:15	285.7	275.1	17:15	298.8	305.6
5:30	285.7	273.5	17:30	298.8	309.8
6:45	285.7	274.2	17:45	298.8	315.1
6:00	298.8	270.6	18:00	298.8	325.7
6:15	298.8	271.9	18:15	298.8	334.2
6:30	298.8	274.6	18:30	298.8	336
6:45	298.8	282.4	18:45	298.8	333.9
7:00	298.8	291.8	19:00	298.8	332.9
7:15	298.8	296.4	19:15	298.8	330.4
7:30	298.8	306	19:30	298.8	326.5
7:45	298.8	307	19:45	298.8	324.5
8:00	298.8	307.8	20:00	298.8	321.1
8:15	298.8	306.6	20:15	298.8	318.7
8:30	298.8	304.5	20:30	298.8	320
8:45	298.8	302.5	20:45	298.8	321.4
9:00	298.8	266.8	21:00	298.8	322.3
9:15	285.7	310.1	21:15	285.7	319.7
9:30	285.7	304.4	21:30	285.7	316.9
9:45	285.7	300.4	21:45	285.7	309.6
10:00	285.7	300.2	22:00	285.7	303.3
10:15	285.7	294.5	22:15	285.7	297.5
10:30	285.7	288.6	22:30	285.7	292.2
10:45	285.7	291.4	22:45	285.7	289.3
11:00	285.7	290.2	23:00	285.7	287.5
11:15	285.7	291.3	23:15	285.7	275.7
11:30	285.7	293.9	23:30	285.7	273.7
11:45	285.7	290.2	23:45	285.7	270.3

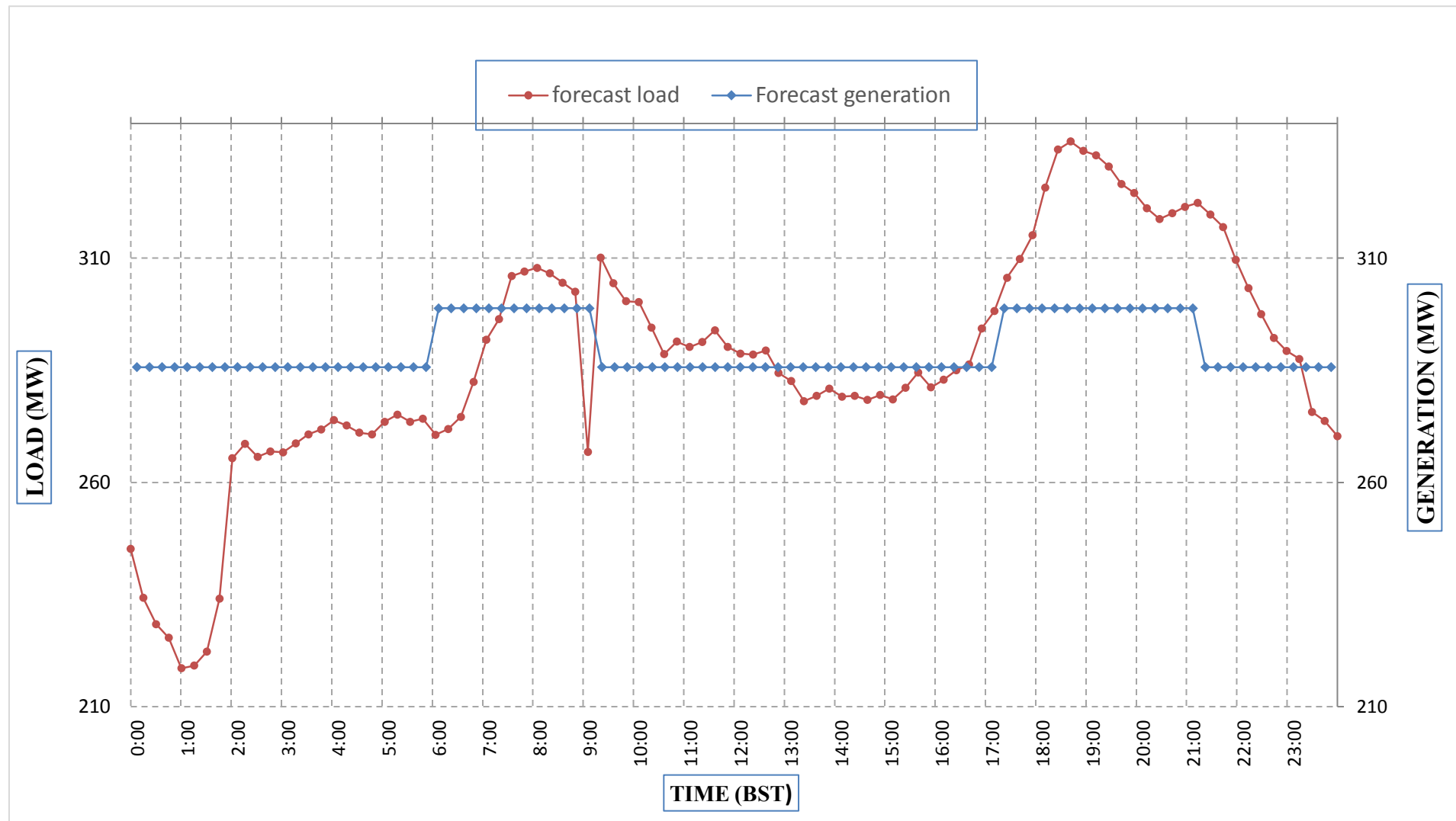
Yours faithfully,
 Karma Yangden



Message No.: Enter your message number
 From: Shift In-charge, Control Room

Date: 29-Jan-18
 Time: 10:36

Forecast Generation & Load Forecast for Tomorrow (30-Jan-2018).



Yours faithfully,
 Karma Yangden

	MW
Scheduled Peak Generation(30-Jan-2018).	298.80
Forecast Peak Load(30-Jan-2018).	336.00



Bhutan Power Corporation Ltd.
Bhutan Power System Operator
Thimphu: Bhutan

འབྲུག་རྒྱལ་ཁོ་ལས་འཛིན།



Message No.: Enter your message number
From: Shift In-charge, Control Room

Date: 29-Jan-18
Time: 10:36

To
 Managing Director, BPC. Email: gemtshering@bpc.bt
 Director, O&MD, DGPC. Email: director.umd@drukgreen.com
 General Manager, TD, BPC. Email: ktobgye@bpc.bt
 Advisor, BPC. Email: bharattamang@bpc.bt

Sub: Forecast Generation and Actual Generation of Dagachhu (28-Jan-2018).

Hours (BST)	Actual Frequency	Forecast Generation	Actual Generation	Hours (BST)	Actual Frequency	Forecast Generation	Actual Generation
0:00	49.95	20	19.98	12:00	49.98	20	20.10
0:15	49.96	20	19.99	12:15	49.91	20	20.12
0:30	49.95	20	20.01	12:30	49.92	20	20.10
0:45	49.96	20	19.98	12:45	49.95	20	20.13
1:00	49.99	20	19.99	13:00	49.97	20	20.11
1:15	49.99	20	19.99	13:15	50.00	20	20.14
1:30	49.98	20	19.96	13:30	50.02	20	20.11
1:45	50.01	20	20.00	13:45	50.03	20	20.12
2:00	50.02	20	19.99	14:00	50.03	20	20.11
2:15	50.00	20	19.98	14:15	50.00	20	20.13
2:30	49.97	20	20.00	14:30	50.02	20	20.11
2:45	49.98	20	19.97	14:45	49.99	20	20.10
3:00	49.96	20	20.00	15:00	50.01	20	17.99
3:15	49.97	20	19.99	15:15	50.02	20	20.01
3:30	49.99	20	19.98	15:30	50.00	20	20.00
3:45	50.03	20	20.00	15:45	49.96	20	20.03
4:00	49.98	20	19.97	16:00	49.95	20	20.19
4:15	49.98	20	19.99	16:15	50.01	20	20.19
4:30	49.96	20	19.97	16:30	49.95	20	20.18
4:45	49.97	20	19.98	16:45	49.95	20	20.31
5:00	49.96	20	19.99	17:00	49.97	20	20.33
5:15	49.93	20	19.97	17:15	49.91	20	20.30
5:30	49.95	20	19.99	17:30	49.89	20	20.30
6:45	50.08	20	19.98	17:45	49.90	20	20.32
6:00	50.06	20	19.99	18:00	50.02	20	20.33
6:15	50.03	20	19.98	18:15	50.04	20	20.31
6:30	50.00	20	19.98	18:30	49.99	20	20.33
6:45	49.96	20	19.98	18:45	49.98	20	20.30
7:00	49.99	20	19.99	19:00	49.98	20	19.99
7:15	49.91	20	20.00	19:15	50.00	20	20.03
7:30	49.90	20	20.51	19:30	50.02	20	20.01
7:45	49.92	20	20.48	19:45	50.00	20	20.01
8:00	49.87	20	20.22	20:00	49.98	20	20.01
8:15	49.89	20	20.18	20:15	49.96	20	19.99
8:30	49.90	20	20.22	20:30	49.98	20	20.02
8:45	49.94	20	20.22	20:45	49.97	20	20.01
9:00	49.94	20	20.20	21:00	50.01	20	20.01
9:15	49.90	20	20.21	21:15	50.01	20	20.01
9:30	49.96	20	20.21	21:30	49.99	20	20.00
9:45	49.97	20	20.21	21:45	50.04	20	20.00
10:00	49.84	20	20.20	22:00	50.08	20	20.02
10:15	49.90	20	19.99	22:15	49.97	20	20.02
10:30	49.86	20	20.01	22:30	50.03	20	20.01
10:45	49.89	20	20.00	22:45	50.02	20	20.01
11:00	49.93	20	20.03	23:00	50.03	20	20.02
11:15	49.95	20	20.01	23:15	50.03	20	20.02
11:30	49.96	20	20.12	23:30	50.06	20	20.03
11:45		20	20.11	23:45	50.00	20	20.03

Yours faithfully,
 Karma Yangden



འབྲུག་རྒྱལ་ཁོ་ལས་འཛིན།

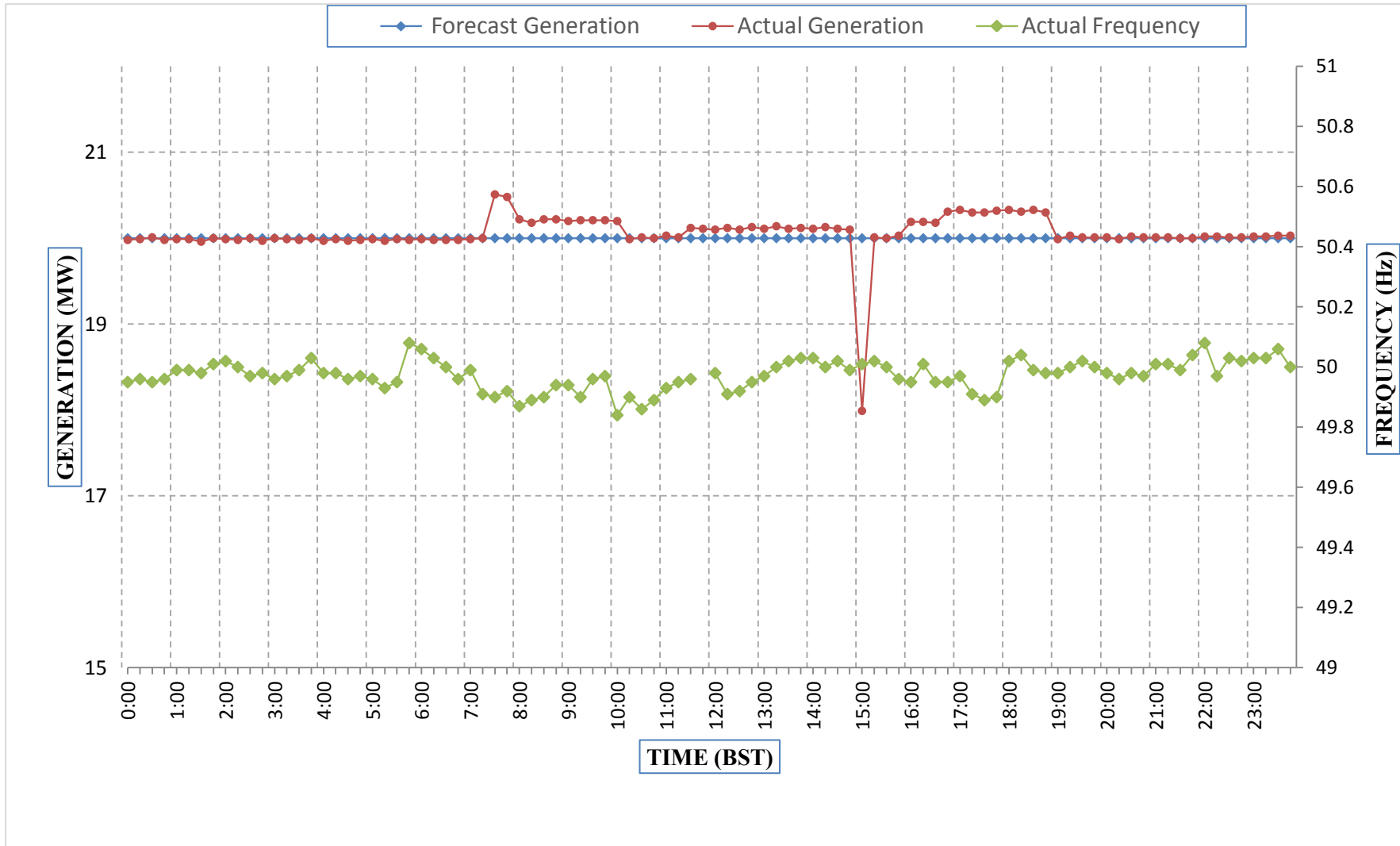
Bhutan Power Corporation Ltd.
Bhutan Power System Operator
Thimphu: Bhutan



Message No.: Enter your message number
From: Shift In-charge, Control Room

Date: 29-Jan-18
Time: 10:36

Forecast Generation & Actual Generation of Dagachhu(28-Jan-2018).



Yours faithfully,
Karma Yangden