



འབྲུག་རྒྱལ་ཁོག་སྐོར་ལམ་འཛིན།

Bhutan Power Corporation Ltd.
Bhutan Power System Operator
Thimphu: Bhutan



Message No.: Enter your message number
From: Shift In-charge, Control Room

Date: 14-Feb-18
Time: 8:10

To
Managing Director, BPC. Email: gemtshering@bpc.bt
Director, O&MD, DGPC. Email: director.umd@drukgreen.com
General Manager, TD, BPC. Email: ktobgye@bpc.bt
General Manager, DCSD, BPC. Email: sandeeprai@bpc.bt

Sub: **Load Generation Balance Report of Yesterday (13-Feb-2018).**

Hours (BST)	Forecast		Actual		Hours (BST)	Forecast		Actual	
	Generation	Load	Generation	Load		Generation	Load	Generation	Load
0:00	276.20	276.20	265.79	244.62	12:00	292.00	292.00	278.54	280.92
0:15	298.20	278.20	265.49	248.82	12:15	283.10	294.70	275.55	277.51
0:30	293.40	273.40	266.67	247.51	12:30	283.10	293.00	275.39	278.57
0:45	297.70	277.70	269.88	245.73	12:45	283.10	283.10	275.27	275.46
1:00	300.30	280.30	268.75	232.77	13:00	281.10	285.70	274.36	266.42
1:15	290.40	270.40	269.49	232.84	13:15	281.10	281.10	275.95	256.24
1:30	261.90	241.90	269.57	247.23	13:30	274.00	281.50	275.55	264.34
1:45	263.60	243.60	268.98	243.13	13:45	274.00	274.00	276.63	265.03
2:00	253.50	233.50	268.96	247.18	14:00	278.50	280.10	277.25	255.64
2:15	248.80	228.80	267.78	245.18	14:15	278.50	281.90	275.79	258.31
2:30	237.70	217.70	268.32	249.11	14:30	278.50	283.90	277.42	265.42
2:45	242.50	222.50	270.40	246.55	14:45	278.50	284.20	277.24	267.88
3:00	246.30	231.30	269.02	242.52	15:00	278.50	281.40	281.98	267.04
3:15	255.30	240.30	268.97	247.18	15:15	278.50	280.00	292.63	266.34
3:30	263.50	248.50	269.61	247.82	15:30	278.50	279.30	277.48	267.50
3:45	269.40	254.40	268.89	248.20	15:45	278.50	279.20	275.87	280.73
4:00	272.60	257.60	269.44	254.40	16:00	278.50	278.50	277.29	279.14
4:15	276.50	261.50	268.76	252.09	16:15	278.50	281.60	277.47	282.01
4:30	281.40	266.40	268.88	254.01	16:30	283.80	283.80	276.05	278.09
4:45	282.20	267.20	268.45	258.88	16:45	283.80	290.80	276.91	280.66
5:00	281.00	266.00	269.78	258.92	17:00	286.40	293.40	276.24	287.73
5:15	289.60	274.60	269.46	256.98	17:15	297.50	297.50	276.39	290.31
5:30	292.00	277.00	268.38	261.88	17:30	304.70	304.70	290.02	294.00
5:45	277.70	277.70	268.73	270.75	17:45	314.10	314.40	288.08	305.05
6:00	277.80	277.80	267.66	271.39	18:00	317.50	325.60	289.17	316.80
6:15	278.70	278.70	269.83	276.49	18:15	328.50	328.50	288.44	328.10
6:30	295.80	295.80	268.97	289.41	18:30	330.10	337.20	287.97	330.75
6:45	305.00	305.00	266.53	307.12	18:45	330.10	339.00	290.00	332.51
7:00	318.40	318.40	266.86	320.40	19:00	330.10	339.30	289.59	334.22
7:15	323.50	323.50	279.91	316.71	19:15	330.10	337.50	288.43	337.18
7:30	324.10	324.60	280.09	319.43	19:30	330.10	333.00	289.96	334.75
7:45	324.10	327.90	280.43	315.56	19:45	323.40	330.50	288.94	324.94
8:00	324.10	324.10	280.98	304.41	20:00	323.40	327.00	288.80	324.52
8:15	314.40	314.40	280.18	304.07	20:15	323.40	323.40	289.33	322.02
8:30	299.90	299.90	280.30	302.47	20:30	322.10	322.10	288.97	323.02
8:45	265.30	265.30	278.97	296.13	20:45	241.90	316.80	290.97	321.09
9:00	304.10	304.10	280.70	281.31	21:00	241.90	320.50	281.32	311.23
9:15	293.00	312.70	267.74	283.41	21:15	241.90	319.10	275.91	314.02
9:30	293.00	298.50	269.27	282.48	21:30	241.90	312.80	276.88	298.01
9:45	293.00	299.20	267.41	278.90	21:45	241.30	306.30	276.27	297.00
10:00	293.00	297.90	267.98	274.38	22:00	306.50	306.50	276.08	279.69
10:15	292.00	293.90	260.19	272.06	22:15	305.50	305.50	276.36	264.13
10:30	292.00	292.00	260.75	272.43	22:30	308.90	308.90	276.47	259.88
10:45	289.80	289.80	261.23	268.57	22:45	300.80	300.80	277.86	260.95
11:00	291.30	291.30	259.79	263.88	23:00	291.20	295.90	275.45	260.32
11:15	292.00	295.00	270.98	264.87	23:15	291.20	296.70	277.43	257.39
11:30	292.00	296.80	276.45	278.22	23:30	291.20	291.20	276.99	261.12
11:45	292.00	296.20	278.26	273.00	23:45	124.70	282.80	276.88	259.78

Yours faithfully
Karma Yangden

Coincidental peak load of Day(Last year):	
284.49	13-Feb-17
Maximum Load till date:	
362.09	14-Nov-17



འབྲུག་གློག་ལེ་ལས་འཛིན།

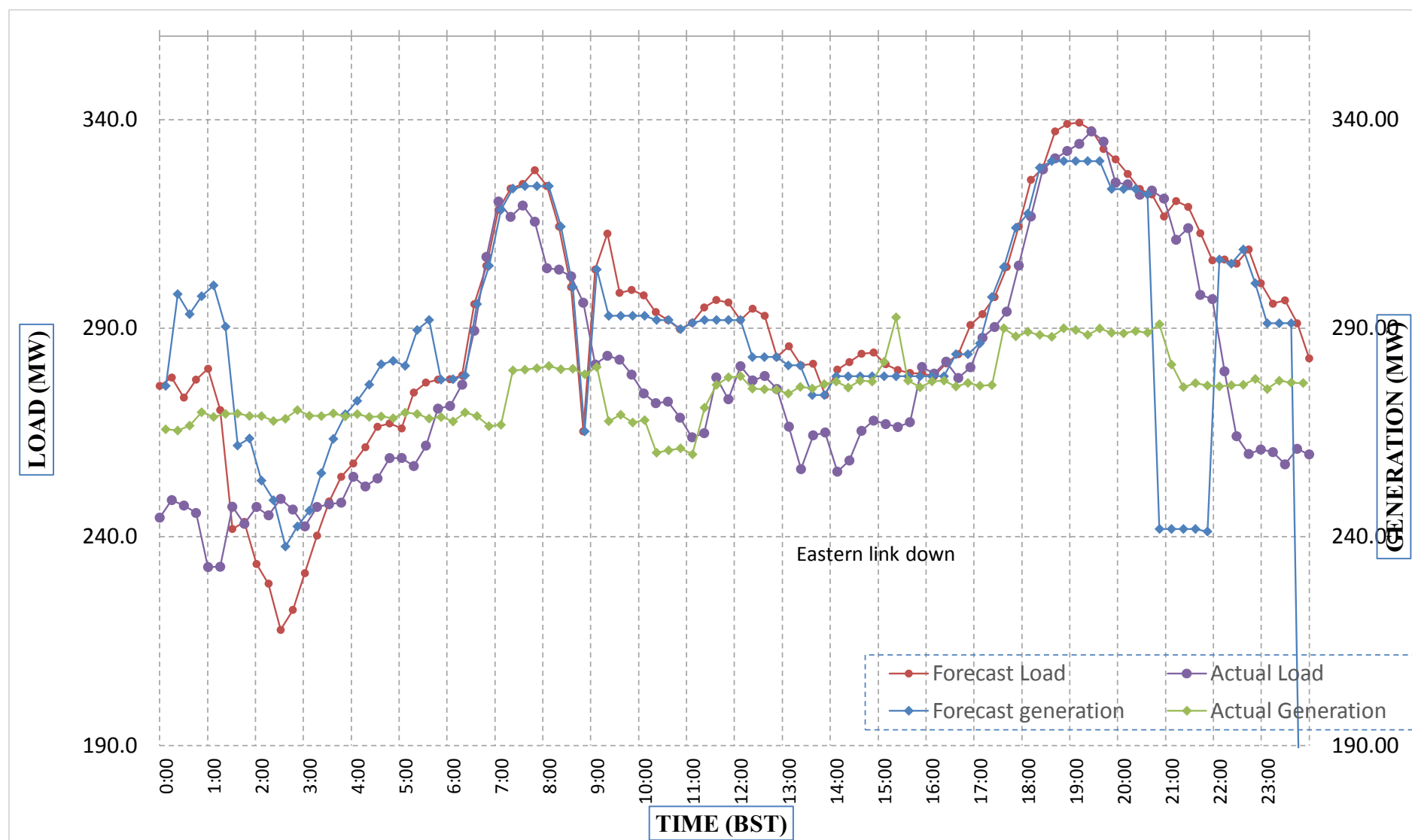
Bhutan Power Corporation Ltd.
 Bhutan Power System Operator
 Thimphu: Bhutan



Message No.: Enter your message number
 From: Shift In-charge, Control Room

Date: 14-Feb-18
 Time: 8:10

Forecast Generation & Load with Actual Generation & Load (13-Feb-2018).



Yours faithfully,
 Karma Yangden

	MW	Coincidental peak load of Day(Last year):	
Peak Co-incident Generation(13-Feb-2018).	292.63	284.49	13-Feb-17
Peak Co-incident Load(13-Feb-2018).	337.18		
		Maximum Load till date:	
		362.09	14-Nov-17

Telephone: +975-02335631; Fax: +975-02335632; Email: bhutansystemoperator@bpc.bt; www.bpc.bt



ཕྱག་ལུག་གྲོག་མེ་ལས་འཛིན།

Bhutan Power Corporation Ltd.
 Bhutan Power System Operator
 Thimphu: Bhutan



Message No.: Enter your message number
 From: Shift In-charge, Control Room

Date: 14-Feb-18
 Time: 8:10

To
 Managing Director, BPC. Email: gemtshering@bpc.bt
 Director, O&MD, DGPC. Email: director.umd@drukgreen.com
 General Manager, TD, BPC. Email: thinleygyeltshen@bpc.bt
 General Manager, DCSD, BPC. Email: sandeeprai@bpc.bt

Sub: Load Generation Balance Report of Today (14-Feb-2018).

Hours (BST)	Forecast		Actual	
	Generation	Load	Generation	Load
0:00	255.80	267.80	277.04	249.27
0:15	255.80	263.40	276.37	252.59
0:30	255.80	251.10	276.74	250.91
0:45	255.80	256.30	277.76	250.18
1:00	255.80	238.90	275.52	244.37
1:15	255.80	224.60	276.06	253.18
1:30	255.80	218.90	275.77	249.77
1:45	255.80	227.40	276.53	251.63
2:00	255.80	233.80	276.70	242.49
2:15	255.80	230.10	276.69	252.39
2:30	255.80	230.80	276.25	253.05
2:45	255.80	239.60	277.88	247.71
3:00	255.80	253.70	276.57	243.83
3:15	255.80	254.10	277.07	250.00
3:30	255.80	259.30	276.70	244.91
3:45	255.80	257.20	275.75	253.94
4:00	255.80	260.70	277.35	251.96
4:15	255.80	262.50	275.83	248.41
4:30	255.80	264.50	275.09	252.04
4:45	255.80	266.20	276.48	250.80
5:00	255.80	265.30	275.50	251.91
5:15	255.80	272.20	277.33	259.43
5:30	255.80	274.60	276.40	252.01
5:45	255.80	276.90	275.04	261.05
6:00	255.80	277.60	275.80	255.11
6:15	267.30	280.90	275.60	267.62
6:30	267.30	297.40	275.33	253.79
6:45	267.30	308.70	274.62	294.30
7:00	267.30	320.70	273.40	305.59
7:15	267.30	325.60	272.98	305.13
7:30	267.30	325.40	272.34	296.19
7:45	267.30	327.60	271.73	298.44
8:00	267.30	322.60	256.79	286.70
8:15	267.30	313.60	283.20	297.09
8:30	267.30	306.60	282.88	292.95
8:45	267.30	278.70	284.19	285.95
9:00	267.30	308.10	284.06	281.95

Coincidental peak load of Day(Last year):	
298.81	14-Feb-17

Maximum Load till date:	
362.09	14-Nov-17

Yours faithfully,
 Karma Yangden



འབྲུག་གྲོག་མེ་ལས་འཛིན།

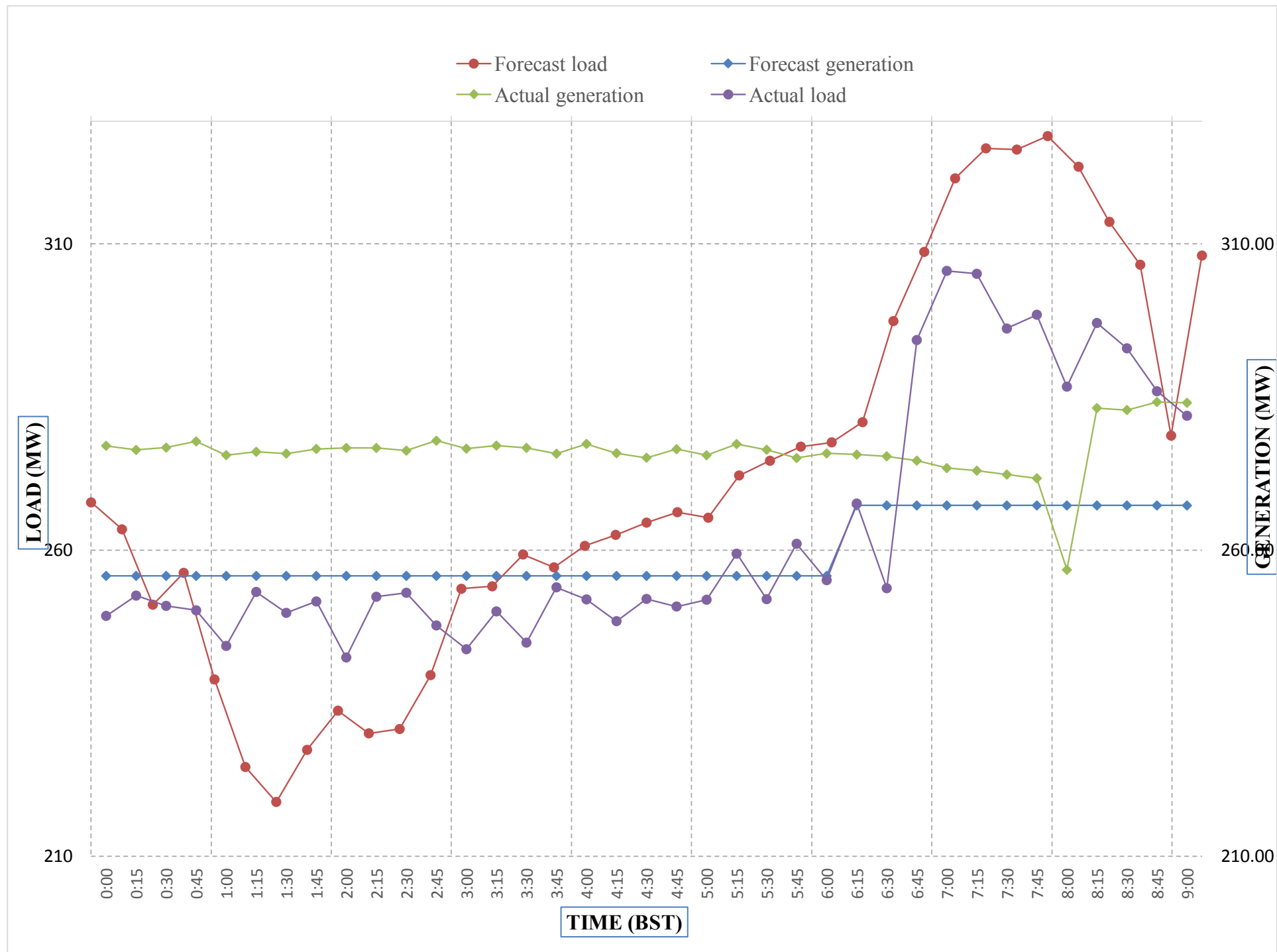
Bhutan Power Corporation Ltd.
Bhutan Power System Operator
Thimphu: Bhutan



Message No.: Enter your message number
From: Shift In-charge, Control Room

Date: 14-Feb-18
Time: 8:10

Forecast Generation & Load with Actual Generation & Load of Today from 00:00hrs to 09:00hrs(14-Feb-2018).



Yours faithfully
Karma Yangden

Coincidental peak load of Day>Last	
298.81	14-Feb-17
Maximum Load till date:	
288.4375	23-Nov-00



འབྲུག་གྲོག་ལེན་ལྷན་ཁག།
Bhutan Power Corporation Ltd.
Bhutan Power System Operator
 Thimphu: Bhutan



Message No.: Enter your message number **Date:** 14-Feb-18
From: Shift In-charge, Control Room **Time:** 8:10

To
 Managing Director, BPC. Email: gemtshering@bpc.bt
 Director, O&MD, DGPC. Email: director.omid@drukgreen.com
 General Manager, TD, BPC. Email: ktobgye@bpc.bt
 Advisor, BPC. Email: bharattamang@bpc.bt

Sub: Load Generation Balance Report of Tomorrow (15-Feb-2018).

Hours (BST)	Forecast		Hours (BST)	Forecast	
	Generation	Load		Generation	Load
0:00	299.20	268.80	12:00	184.20	291.20
0:15	299.20	268.60	12:15	184.20	292.60
0:30	299.20	264.40	12:30	184.20	290.40
0:45	299.20	265.80	12:45	184.20	282.10
1:00	299.20	262.10	13:00	184.20	281.60
1:15	299.20	260.50	13:15	184.20	274.50
1:30	299.20	235.20	13:30	184.20	274.50
1:45	299.20	229.30	13:45	184.20	269.50
2:00	299.20	221.90	14:00	184.20	272.00
2:15	299.20	216.50	14:15	184.20	273.70
2:30	299.20	206.80	14:30	184.20	276.90
2:45	299.20	206.30	14:45	184.20	277.70
3:00	299.20	209.90	15:00	184.20	276.50
3:15	299.20	223.70	15:15	195.20	276.00
3:30	299.20	234.90	15:30	195.20	278.30
3:45	299.20	244.60	15:45	195.20	284.20
4:00	299.20	266.50	16:00	195.20	284.90
4:15	299.20	266.00	16:15	195.20	284.80
4:30	299.20	270.30	16:30	195.20	287.50
4:45	299.20	275.10	16:45	195.20	292.60
5:00	299.20	278.40	17:00	195.20	295.60
5:15	299.20	282.90	17:15	195.20	298.60
5:30	299.20	285.30	17:30	195.20	306.80
6:45	299.20	285.80	17:45	195.20	315.10
6:00	299.20	286.50	18:00	195.20	325.50
6:15	310.10	290.50	18:15	195.20	331.40
6:30	310.10	297.60	18:30	195.20	340.80
6:45	310.10	311.30	18:45	287.10	340.90
7:00	310.10	322.80	19:00	287.10	341.70
7:15	310.10	325.50	19:15	287.10	339.60
7:30	310.10	325.90	19:30	287.10	334.40
7:45	310.10	329.30	19:45	287.10	326.70
8:00	310.10	321.40	20:00	287.10	326.70
8:15	310.10	323.40	20:15	287.10	322.90
8:30	310.10	308.40	20:30	287.10	321.30
8:45	195.20	247.00	20:45	287.10	315.00
9:00	195.20	312.10	21:00	287.10	314.30
9:15	184.20	303.60	21:15	276.20	312.20
9:30	184.20	295.20	21:30	276.20	305.40
9:45	184.20	293.70	21:45	276.20	295.20
10:00	184.20	291.70	22:00	276.20	290.90
10:15	184.20	288.50	22:15	276.20	289.40
10:30	184.20	288.30	22:30	276.20	285.90
10:45	184.20	286.10	22:45	276.20	281.80
11:00	184.20	285.60	23:00	276.20	275.10
11:15	184.20	288.60	23:15	276.20	276.00
11:30	184.20	292.60	23:30	276.20	276.50
11:45	184.20	292.70	23:45	276.20	272.70

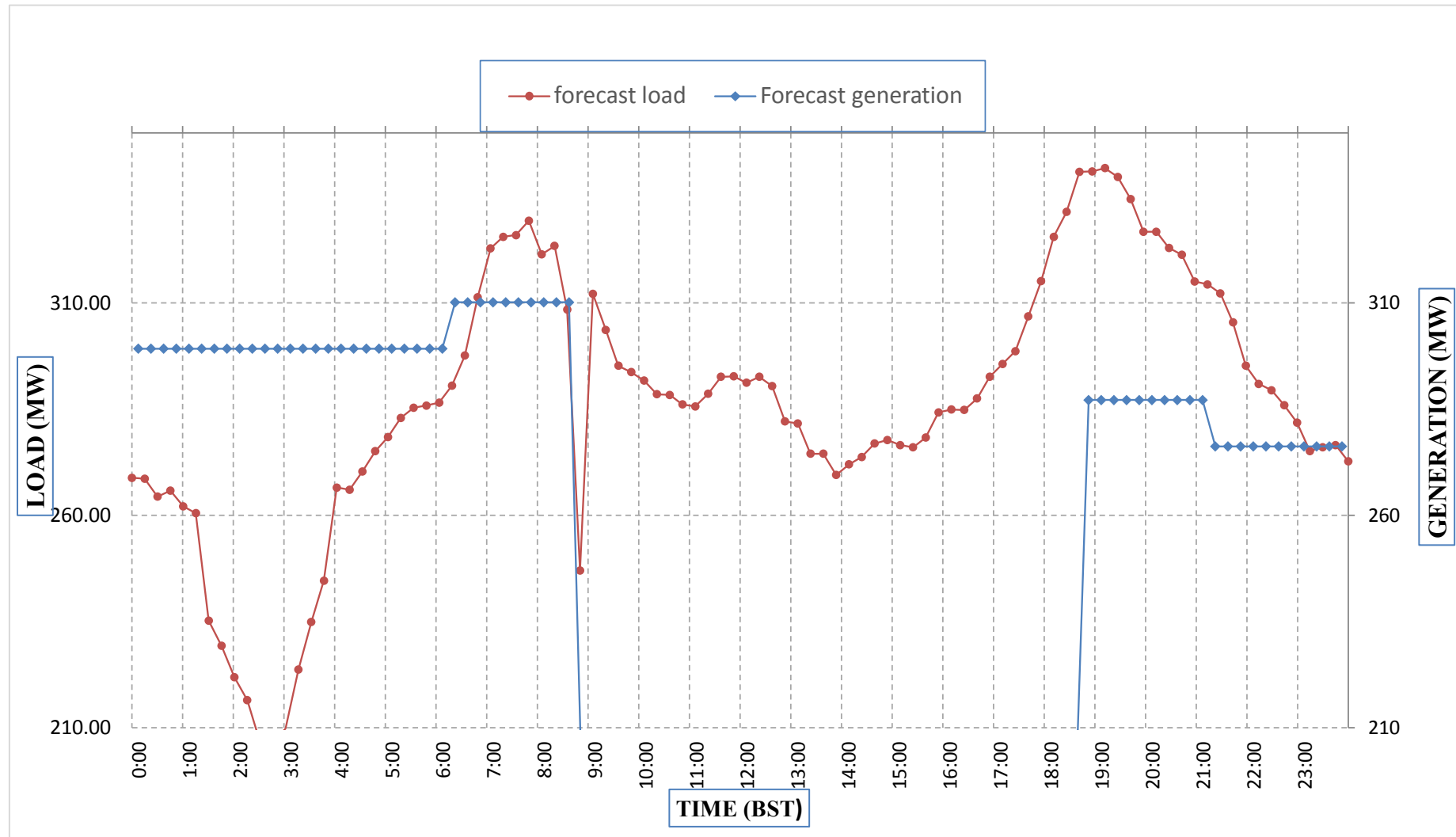
Yours faithfully,
 Karma Yangden



Message No.: Enter your message number
 From: Shift In-charge, Control Room

Date: 14-Feb-18
 Time: 11:10

Forecast Generation & Load Forecast for Tomorrow (15-Feb-2018).



Yours faithfully,
 Karma Yangden

	MW
Scheduled Peak Generation(15-Feb-2018).	310.10
Forecast Peak Load(15-Feb-2018).	341.70



འབྲུག་གྲོག་ཚེ་ལས་འདི་ན།



Bhutan Power Corporation Ltd.
Bhutan Power System Operator
Thimphu: Bhutan

Message No.: Enter your message number Date: 14-Feb-18
From: Shift In-charge, Control Room Time: 8:10

To
Managing Director, BPC. Email: gemtshering@bpc.bt
Director, O&MD, DGPC. Email: director.umd@drukgreen.com
General Manager, TD, BPC. Email: ktobgye@bpc.bt
Advisor, BPC. Email: bharattamang@bpc.bt

Sub: Forecast Generation and Actual Generation of Dagachhu (13-Feb-2018).

Hours (BST)	Actual Frequency	Forecast Generation	Actual Generation	Hours (BST)	Actual Frequency	Forecast Generation	Actual Generation
0:00	50.00	18.00	16.03	12:00	49.94	18.00	18.20
0:15	49.99	18.00	15.99	12:15	49.95	18.00	18.20
0:30	50.02	18.00	16.01	12:30	50.01	18.00	18.20
0:45	50.01	18.00	18.39	12:45	50.01	18.00	18.20
1:00	49.99	18.00	18.41	13:00	50.05	18.00	18.26
1:15	50.02	18.00	18.38	13:15	50.02	18.00	18.20
1:30	50.02	18.00	18.41	13:30	49.99	18.00	18.18
1:45	50.02	18.00	18.39	13:45	49.98	18.00	18.21
2:00	50.00	18.00	18.41	14:00	49.95	18.00	18.20
2:15	50.00	18.00	18.40	14:15	49.94	18.00	18.20
2:30	49.98	18.00	18.39	14:30	49.98	18.00	18.21
2:45	49.97	18.00	18.42	14:45	50.01	18.00	18.21
3:00	49.98	18.00	18.39	15:00	49.98	18.00	18.18
3:15	49.99	18.00	18.37	15:15	49.99	18.00	18.20
3:30	49.98	18.00	18.38	15:30	49.95	18.00	18.21
3:45	50.03	18.00	18.40	15:45	49.96	18.00	18.19
4:00	50.00	18.00	18.39	16:00	49.98	18.00	18.19
4:15	50.01	18.00	18.37	16:15	49.93	18.00	18.21
4:30	50.00	18.00	18.41	16:30	49.94	18.00	18.20
4:45	50.00	18.00	18.38	16:45	49.94	18.00	18.22
5:00	49.98	18.00	18.36	17:00	50.01	18.00	18.19
5:15	50.01	18.00	18.40	17:15	49.95	18.00	18.21
5:30	50.04	18.00	18.39	17:30	49.92	18.00	18.20
6:45	50.07	18.00	18.39	17:45	50.02	18.00	18.00
6:00	50.03	18.00	18.38	18:00	50.01	18.00	18.28
6:15	50.01	18.00	18.38	18:15	49.98	18.00	18.30
6:30	49.96	18.00	18.38	18:30	49.94	18.00	17.99
6:45	49.93	18.00	17.04	18:45	49.93	18.00	18.29
7:00	49.93	18.00	17.01	19:00	49.97	18.00	18.27
7:15	49.94	18.00	17.50	19:15	50.00	18.00	18.30
7:30	50.01	18.00	18.28	19:30	49.97	18.00	18.29
7:45	50.00	18.00	18.29	19:45	49.99	18.00	18.31
8:00	49.89	18.00	18.28	20:00	50.02	18.00	18.29
8:15	49.90	18.00	18.29	20:15	50.01	18.00	18.28
8:30	49.96	18.00	18.30	20:30	50.00	18.00	18.29
8:45	49.91	18.00	18.22	20:45	49.95	18.00	18.31
9:00	49.95	18.00	18.20	21:00	49.95	18.00	18.30
9:15	49.95	18.00	18.20	21:15	49.98	18.00	18.30
9:30	49.97	18.00	18.22	21:30	50.02	18.00	18.30
9:45	49.94	18.00	18.20	21:45	50.03	18.00	18.30
10:00	49.87	18.00	18.19	22:00	49.97	18.00	18.29
10:15	49.96	18.00	18.19	22:15	50.01	18.00	18.27
10:30	49.98	18.00	18.20	22:30	49.97	18.00	18.30
10:45	50.01	18.00	18.20	22:45	50.00	18.00	18.27
11:00	50.04	18.00	18.21	23:00	49.97	18.00	18.29
11:15	50.07	18.00	18.20	23:15	49.99	18.00	18.31
11:30	49.98	18.00	18.20	23:30	49.98	18.00	18.27
11:45	50.00	18.00	18.20	23:45	49.98	18.00	18.30

Yours faithfully,
Karma Yangden

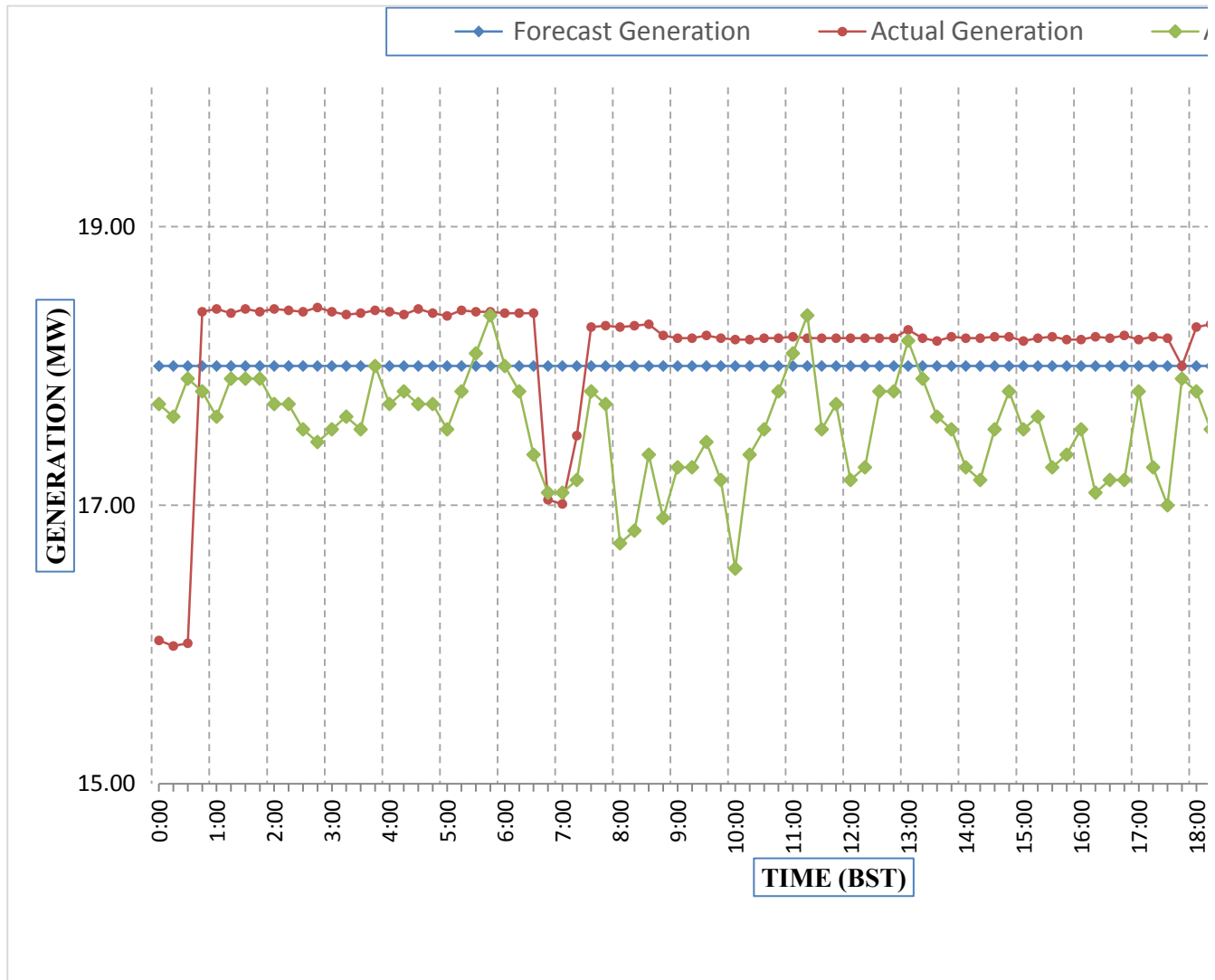


འབྲུག་ལྗོངས་མི་ལམ་འཛིན།

Bhutan Power Corporation Ltd.
Bhutan Power System Operator
Thimphu: Bhutan

Message No.: Enter your message number
From: Shift In-charge, Control Room

Forecast Generation & Actual Generation of Dagachhu(13-Feb-2018).



Yours faithfully,
Karma Yangden



Date: 14-Feb-18
Time: 14:05

Actual Frequency

