



ཕྱག་ལུགས་ལེ་ལས་འཛིན།

Bhutan Power Corporation Ltd.
Bhutan Power System Operator
Thimphu: Bhutan



Message No.: Enter your message number
From: Shift In-charge, Control Room

Date: 13-Feb-18
Time: 10:18

To
Managing Director, BPC. Email: gemtshering@bpc.bt
Director, O&MD, DGPC. Email: director.umd@drukgreen.com
General Manager, TD, BPC. Email: ktobgye@bpc.bt
General Manager, DCSD, BPC. Email: sandeeprai@bpc.bt

Sub: **Load Generation Balance Report of Yesterday (12-Feb-2018).**

Hours (BST)	Forecast		Actual		Hours (BST)	Forecast		Actual	
	Generation	Load	Generation	Load		Generation	Load	Generation	Load
0:00	270.30	270.30	289.59	255.54	12:00	290.80	290.80	289.64	298.91
0:15	267.10	267.10	289.29	255.97	12:15	290.90	290.90	289.14	295.73
0:30	259.70	259.70	288.94	252.37	12:30	289.40	289.40	290.24	297.13
0:45	265.90	265.90	289.84	252.07	12:45	279.30	279.30	288.10	290.72
1:00	268.20	268.20	289.13	248.67	13:00	279.50	279.50	290.20	290.41
1:15	266.20	266.20	288.39	246.30	13:15	275.40	275.40	290.73	269.61
1:30	251.70	251.70	289.55	244.68	13:30	277.10	277.10	288.98	269.74
1:45	236.70	236.70	288.70	244.99	13:45	272.80	272.80	290.45	265.70
2:00	229.20	229.20	288.99	245.59	14:00	276.40	276.40	290.77	266.27
2:15	214.60	214.60	289.92	251.27	14:15	279.10	279.10	289.21	254.45
2:30	205.00	205.00	289.63	250.87	14:30	279.80	279.80	289.69	259.59
2:45	206.20	206.20	288.70	251.74	14:45	280.70	280.70	288.93	273.20
3:00	205.80	205.80	289.36	253.15	15:00	279.70	279.70	288.80	267.29
3:15	211.70	211.70	288.33	252.42	15:15	278.90	278.90	290.59	273.29
3:30	216.60	216.60	289.76	254.11	15:30	282.10	282.10	290.45	284.96
3:45	214.40	214.40	289.93	244.05	15:45	284.30	284.30	288.97	302.09
4:00	218.80	218.80	289.08	246.99	16:00	280.00	280.00	289.91	303.89
4:15	229.80	229.80	289.55	245.00	16:15	284.40	284.40	289.32	308.69
4:30	239.10	239.10	288.52	250.49	16:30	285.90	285.90	289.88	309.63
4:45	240.30	240.30	290.30	252.75	16:45	293.90	293.90	289.22	314.27
5:00	247.70	247.70	289.03	261.99	17:00	295.00	295.00	289.35	313.95
5:15	261.90	261.90	289.45	261.33	17:15	301.10	301.10	278.77	317.41
5:30	265.50	265.50	290.40	267.88	17:30	305.40	305.40	291.60	316.92
5:45	266.90	266.90	289.95	271.41	17:45	314.90	314.90	290.77	327.84
6:00	269.60	269.60	289.78	276.20	18:00	324.50	324.50	291.26	335.97
6:15	276.50	276.50	290.16	281.81	18:15	329.00	333.90	291.28	346.36
6:30	301.10	301.10	290.15	299.98	18:30	329.00	339.80	291.24	356.87
6:45	314.70	314.70	288.85	317.44	18:45	329.00	339.90	290.41	358.53
7:00	327.40	327.40	288.85	324.61	19:00	329.00	340.30	290.66	359.86
7:15	330.90	330.90	289.13	324.59	19:15	329.00	334.90	291.17	355.05
7:30	338.30	338.30	289.48	318.47	19:30	329.00	330.60	291.67	344.85
7:45	335.70	335.70	289.96	322.43	19:45	328.20	328.20	292.03	333.97
8:00	319.30	319.30	288.82	316.54	20:00	320.60	320.60	290.95	329.35
8:15	287.80	287.80	289.71	312.33	20:15	320.00	320.00	281.31	326.77
8:30	256.60	256.60	288.76	309.73	20:30	316.80	316.80	281.95	316.24
8:45	254.00	254.00	301.61	322.34	20:45	312.90	312.90	281.80	307.03
9:00	323.50	323.50	302.42	318.21	21:00	312.90	313.10	281.80	306.47
9:15	297.80	297.80	288.95	302.98	21:15	312.40	312.40	269.21	300.22
9:30	298.00	298.00	289.16	303.51	21:30	305.60	305.60	268.76	286.20
9:45	296.60	296.60	289.22	300.28	21:45	301.60	301.60	268.83	272.27
10:00	295.30	295.30	289.26	297.24	22:00	298.30	298.30	269.50	262.84
10:15	295.90	295.90	288.28	289.55	22:15	287.20	292.60	268.91	261.33
10:30	294.90	294.90	290.26	296.96	22:30	287.20	289.40	268.52	246.81
10:45	291.20	291.20	290.14	297.29	22:45	284.00	284.00	270.65	251.89
11:00	291.40	291.40	288.61	290.32	23:00	275.90	275.90	269.44	244.07
11:15	292.50	292.50	289.79	300.44	23:15	233.90	274.70	268.01	242.51
11:30	292.90	292.90	289.88	295.23	23:30	192.80	271.70	269.03	246.57
11:45	293.80	293.80	289.50	296.75	23:45	192.80	270.30	267.34	246.31

Yours faithfully
Karma Yangden

Coincidental peak load of Day(Last year):	
286.06	12-Feb-17
Maximum Load till date:	
362.09	14-Nov-17



འབྲུག་གྲོག་མེ་ལས་འཛིན།

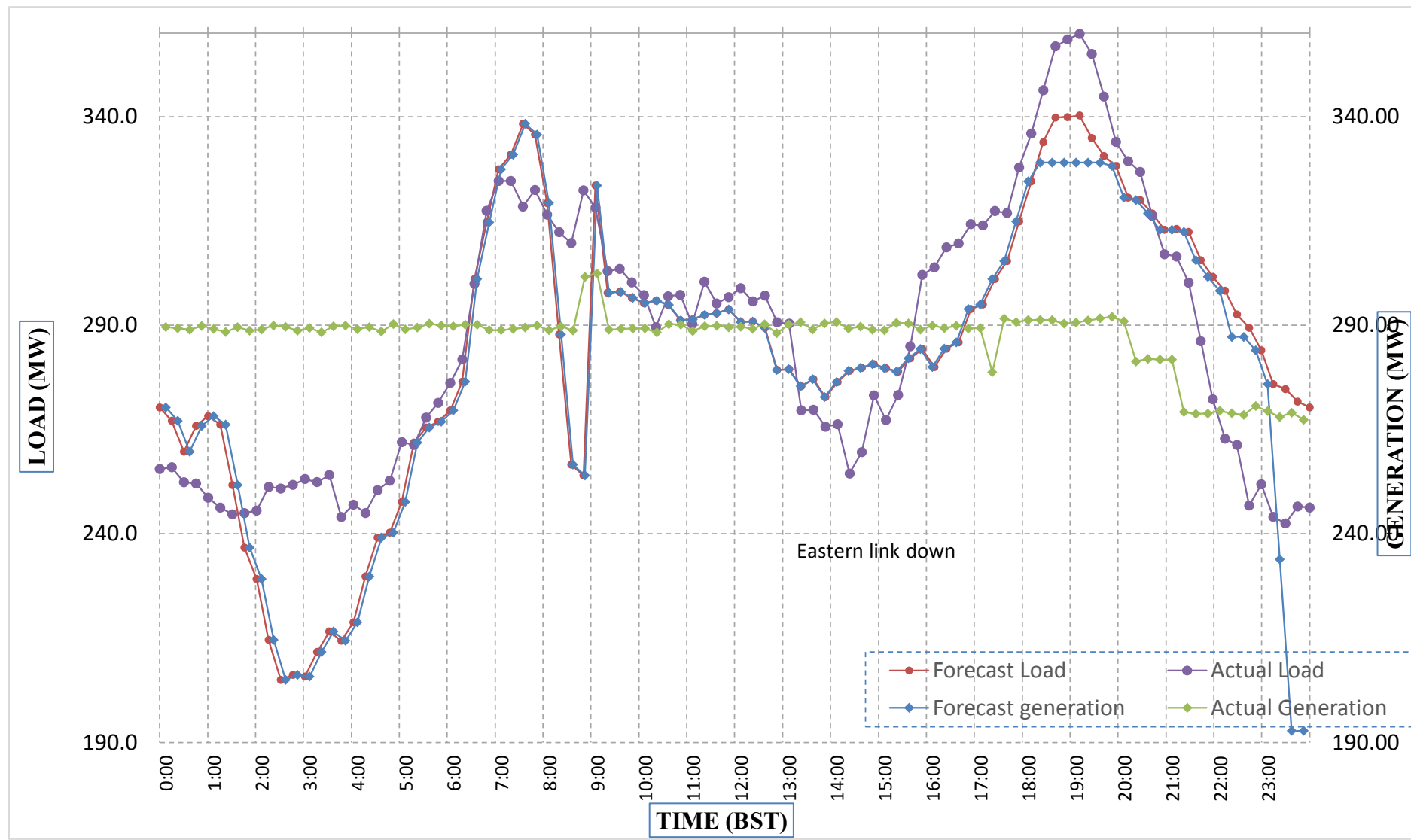
Bhutan Power Corporation Ltd.
Bhutan Power System Operator
Thimphu: Bhutan



Message No.: Enter your message number
From: Shift In-charge, Control Room

Date: 13-Feb-18
Time: 10:18

Forecast Generation & Load with Actual Generation & Load (12-Feb-2018).



Yours faithfully,
Karma Yangden

	MW	Coincidental peak load of Day(Last year):	
Peak Co-incident Generation(12-Feb-2018).	302.42	286.06	12-Feb-17
Peak Co-incident Load(12-Feb-2018).	359.86		
		Maximum Load till date:	
		362.09	14-Nov-17

Telephone: +975-02335631; Fax: +975-02335632; Email: bhutansystemoperator@bpc.bt; www.bpc.bt



འབྲུག་རྒྱུ་ལེ་ལས་འཛིན།

Bhutan Power Corporation Ltd.
Bhutan Power System Operator
Thimphu: Bhutan



Message No.: Enter your message number
From: Shift In-charge, Control Room

Date: 13-Feb-18
Time: 10:18

To

Managing Director, BPC. Email: gemtshering@bpc.bt
Director, O&MD, DGPC. Email: director.umd@drukgreen.com
General Manager, TD, BPC. Email: thinleygyeltshen@bpc.bt
General Manager, DCSD, BPC. Email: sandeeprai@bpc.bt

Sub: Load Generation Balance Report of Today (13-Feb-2018).

Hours (BST)	Forecast		Actual	
	Generation	Load	Generation	Load
0:00	276.20	276.20	265.79	244.62
0:15	298.20	278.20	265.49	248.82
0:30	293.40	273.40	266.67	247.51
0:45	297.70	277.70	269.88	245.73
1:00	300.30	280.30	268.75	232.77
1:15	290.40	270.40	269.49	232.84
1:30	261.90	241.90	269.57	247.23
1:45	263.60	243.60	268.98	243.13
2:00	253.50	233.50	268.96	247.18
2:15	248.80	228.80	267.78	245.18
2:30	237.70	217.70	268.32	249.11
2:45	242.50	222.50	270.40	246.55
3:00	246.30	231.30	269.02	242.52
3:15	255.30	240.30	268.97	247.18
3:30	263.50	248.50	269.61	247.82
3:45	269.40	254.40	268.89	248.20
4:00	272.60	257.60	269.44	254.40
4:15	276.50	261.50	268.76	252.09
4:30	281.40	266.40	268.88	254.01
4:45	282.20	267.20	268.45	258.88
5:00	281.00	266.00	269.78	258.92
5:15	289.60	274.60	269.46	256.98
5:30	292.00	277.00	268.38	261.88
5:45	277.70	277.70	268.73	270.75
6:00	277.80	277.80	267.66	271.39
6:15	278.70	278.70	269.83	276.49
6:30	295.80	295.80	268.97	289.41
6:45	305.00	305.00	266.53	307.12
7:00	318.40	318.40	266.86	320.40
7:15	323.50	323.50	279.91	316.71
7:30	324.10	324.60	280.09	319.43
7:45	324.10	327.90	280.43	315.56
8:00	324.10	324.10	280.98	304.41
8:15	314.40	314.40	280.18	304.07
8:30	299.90	299.90	280.30	302.47
8:45	265.30	265.30	278.97	296.13
9:00	304.10	304.10	280.70	281.31

Yours faithfully,
Karma Yangden

Coincidental peak load of Day(Last year):	
284.49	13-Feb-17

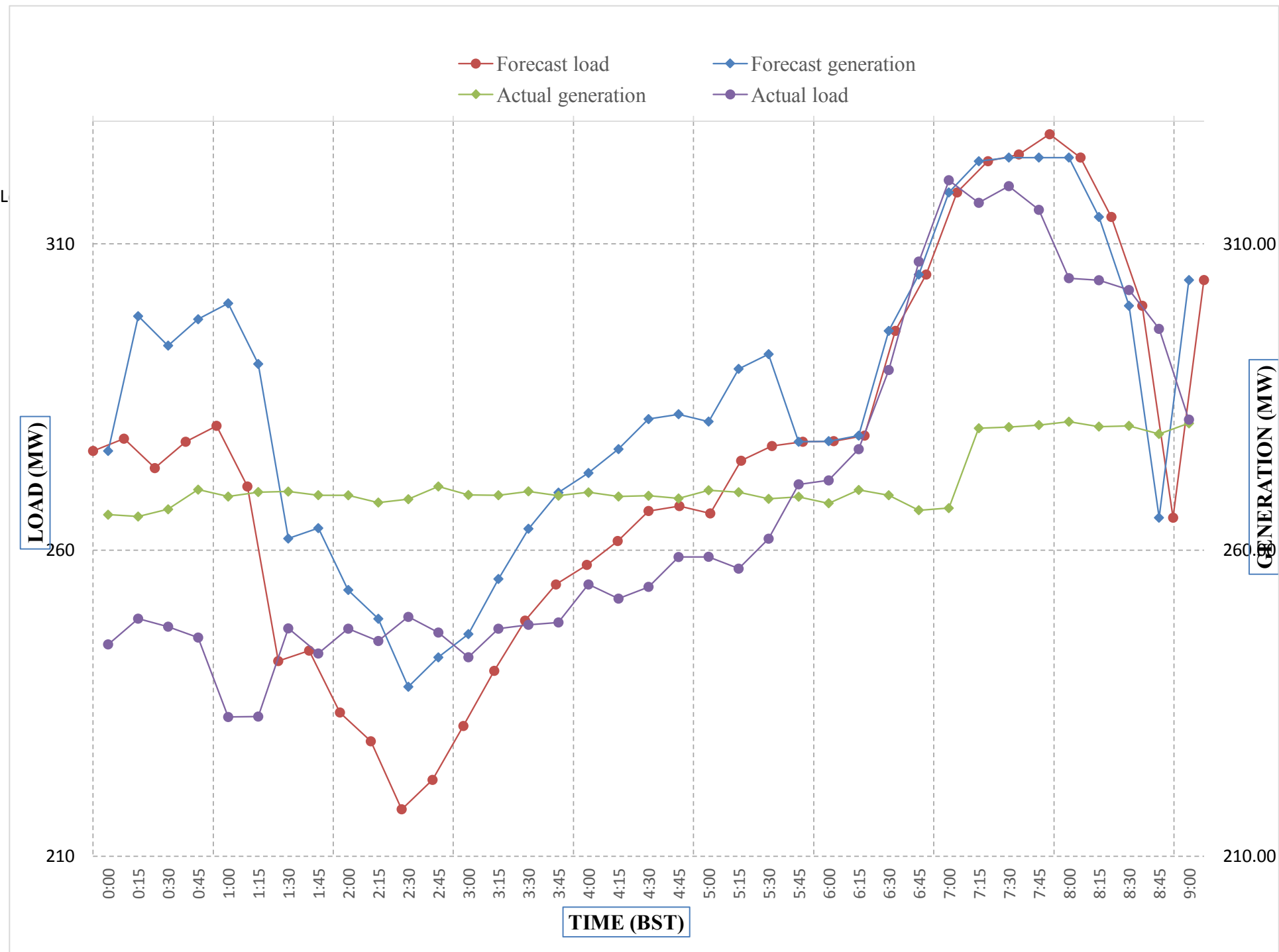
Maximum Load till date:	
362.09	14-Nov-17



Message No.: Enter your message number
 From: Shift In-charge, Control Room

2/10/2018 11:10 13-Feb-18
 2/10/2018 11:10 10:18

Forecast Generation & Load with Actual Generation & Load of Today from 00:00hrs to 09:00hrs(13-Feb-2018).

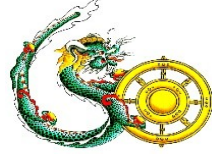


Yours faithfully
 Karma Yangden

Coincidental peak load of Day(Last)	
284.49	13-Feb-17
Maximum Load till date:	
291.28125	11-Dec-00



ཕྱག་ལུགས་ལྷན་ཁག་ལཱ་ལེན་ལྷན་ཁག་།
Bhutan Power Corporation Ltd.
Bhutan Power System Operator
Thimphu: Bhutan



Message No.: Enter your message number **Date:** 13-Feb-18
From: Shift In-charge, Control Room **Time:** 10:18

To
 Managing Director, BPC. Email: gemtshering@bpc.bt
 Director, O&MD, DGPC. Email: director.omid@drukgreen.com
 General Manager, TD, BPC. Email: ktobgye@bpc.bt
 Advisor, BPC. Email: bharattamang@bpc.bt

Sub: **Load Generation Balance Report of Tomorrow (14-Feb-2018).**

Hours (BST)	Forecast		Hours (BST)	Forecast	
	Generation	Load		Generation	Load
0:00	255.80	267.80	12:00	255.80	294.10
0:15	255.80	263.40	12:15	255.80	295.60
0:30	255.80	251.10	12:30	255.80	294.50
0:45	255.80	256.30	12:45	255.80	283.50
1:00	255.80	238.90	13:00	255.80	286.30
1:15	255.80	224.60	13:15	255.80	279.40
1:30	255.80	218.90	13:30	255.80	277.90
1:45	255.80	227.40	13:45	255.80	272.10
2:00	255.80	233.80	14:00	255.80	276.90
2:15	255.80	230.10	14:15	255.80	277.70
2:30	255.80	230.80	14:30	255.80	280.30
2:45	255.80	239.60	14:45	255.80	281.10
3:00	255.80	253.70	15:00	255.80	279.40
3:15	255.80	254.10	15:15	255.80	279.50
3:30	255.80	259.30	15:30	255.80	281.50
3:45	255.80	257.20	15:45	255.80	285.10
4:00	255.80	260.70	16:00	255.80	285.90
4:15	255.80	262.50	16:15	299.80	287.90
4:30	255.80	264.50	16:30	299.80	290.50
4:45	255.80	266.20	16:45	299.80	295.90
5:00	255.80	265.30	17:00	299.80	298.90
5:15	255.80	272.20	17:15	311.30	301.50
5:30	255.80	274.60	17:30	311.30	309.90
6:45	255.80	276.90	17:45	311.30	318.60
6:00	255.80	277.60	18:00	311.30	329.90
6:15	267.30	280.90	18:15	311.30	333.90
6:30	267.30	297.40	18:30	311.30	342.50
6:45	267.30	308.70	18:45	311.30	343.80
7:00	267.30	320.70	19:00	311.30	344.50
7:15	267.30	325.60	19:15	311.30	341.90
7:30	267.30	325.40	19:30	311.30	336.50
7:45	267.30	327.60	19:45	311.30	327.60
8:00	267.30	322.60	20:00	311.30	328.50
8:15	267.30	313.60	20:15	311.30	324.80
8:30	267.30	306.60	20:30	311.30	321.80
8:45	267.30	278.70	20:45	311.30	314.50
9:00	267.30	308.10	21:00	311.30	314.60
9:15	255.80	310.10	21:15	299.80	314.50
9:30	255.80	300.00	21:30	299.80	306.40
9:45	255.80	299.40	21:45	299.80	298.70
10:00	255.80	296.80	22:00	299.80	296.30
10:15	255.80	292.90	22:15	299.80	296.60
10:30	255.80	293.90	22:30	299.80	293.80
10:45	255.80	292.60	22:45	299.80	289.30
11:00	255.80	292.60	23:00	299.80	281.00
11:15	255.80	295.90	23:15	299.80	282.40
11:30	255.80	296.60	23:30	299.80	280.50
11:45	255.80	297.30	23:45	299.80	277.80

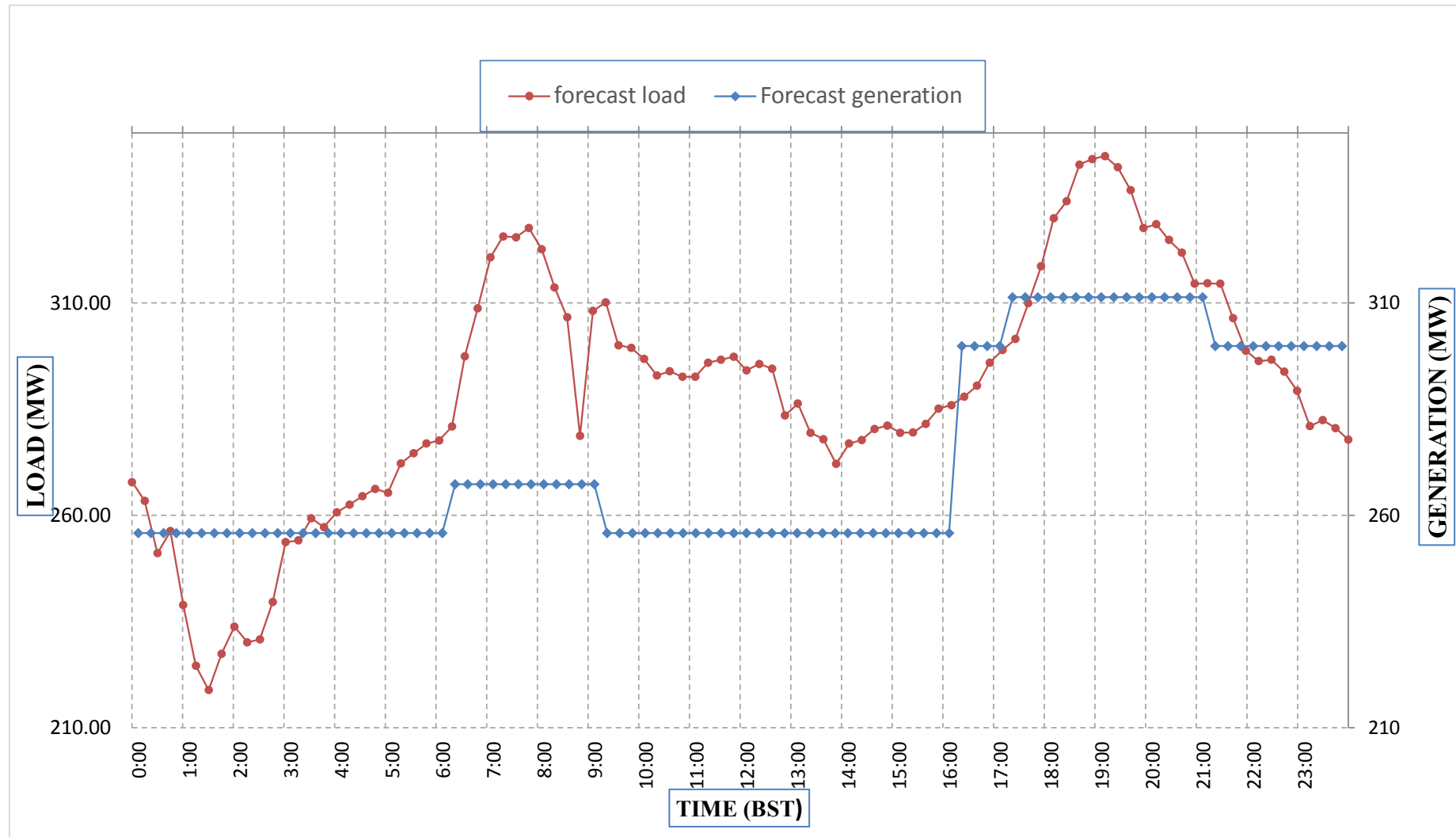
Yours faithfully,
 Karma Yangden



Message No.: Enter your message number
 From: Shift In-charge, Control Room

Date: 13-Feb-18
 Time: 11:10

Forecast Generation & Load Forecast for Tomorrow (14-Feb-2018).



Yours faithfully,
 Karma Yangden

	MW
Scheduled Peak Generation(14-Feb-2018).	311.30
Forecast Peak Load(14-Feb-2018).	344.50



འབྲུག་གྲོག་ཚེ་ལས་འཛིན།

Bhutan Power Corporation Ltd.
Bhutan Power System Operator
Thimphu: Bhutan



Message No.: Enter your message number Date: 13-Feb-18
From: Shift In-charge, Control Room Time: 10:18

To
Managing Director, BPC. Email: gemtshering@bpc.bt
Director, O&MD, DGPC. Email: director.umd@drukgreen.com
General Manager, TD, BPC. Email: ktobgye@bpc.bt
Advisor, BPC. Email: bharattamang@bpc.bt

Sub: Forecast Generation and Actual Generation of Dagachhu (12-Feb-2018).

Hours (BST)	Actual Frequency	Forecast Generation	Actual Generation	Hours (BST)	Actual Frequency	Forecast Generation	Actual Generation
0:00	50.01	18.00	18.03	12:00	49.98	18.00	18.28
0:15	50.01	18.00	18.03	12:15	50.01	18.00	18.28
0:30	50.03	18.00	18.04	12:30	49.96	18.00	18.29
0:45	50.05	18.00	18.04	12:45	49.96	18.00	18.28
1:00	50.04	18.00	18.03	13:00	50.02	18.00	18.28
1:15	50.03	18.00	18.02	13:15	50.02	18.00	18.26
1:30	50.08	18.00	18.03	13:30	50.00	18.00	18.30
1:45	50.08	18.00	18.04	13:45	49.99	18.00	18.28
2:00	50.10	18.00	18.04	14:00	50.00	18.00	18.31
2:15	50.03	18.00	18.03	14:15	49.97	18.00	18.29
2:30	50.01	18.00	18.03	14:30	49.93	18.00	18.26
2:45	50.02	18.00	18.05	14:45	49.99	18.00	18.29
3:00	50.00	18.00	18.03	15:00	49.93	18.00	18.26
3:15	49.99	18.00	18.03	15:15	49.99	18.00	18.38
3:30	50.00	18.00	18.03	15:30	49.93	18.00	18.38
3:45	50.01	18.00	18.03	15:45	49.93	18.00	18.41
4:00	49.94	18.00	18.03	16:00	49.87	18.00	18.38
4:15	49.98	18.00	18.03	16:15	49.89	18.00	18.36
4:30	50.01	18.00	18.30	16:30	49.88	18.00	18.40
4:45	50.00	18.00	18.30	16:45	49.93	18.00	18.39
5:00	49.98	18.00	18.29	17:00	49.95	18.00	18.39
5:15	49.98	18.00	18.25	17:15	49.93	18.00	18.35
5:30	50.00	18.00	18.29	17:30	49.95	18.00	18.38
6:45	50.02	18.00	18.28	17:45	49.98	18.00	18.40
6:00	49.98	18.00	18.30	18:00	50.01	18.00	18.36
6:15	49.99	18.00	18.29	18:15	50.03	18.00	18.40
6:30	49.93	18.00	18.27	18:30	50.00	18.00	18.00
6:45	49.91	18.00	18.28	18:45	49.94	18.00	17.99
7:00	49.95	18.00	18.31	19:00	49.96	18.00	17.99
7:15	49.97	18.00	18.28	19:15	49.99	18.00	18.30
7:30	50.00	18.00	18.29	19:30	50.00	18.00	18.30
7:45	50.01	18.00	18.44	19:45	50.01	18.00	18.29
8:00	50.01	18.00	18.50	20:00	49.95	18.00	18.31
8:15	49.96	18.00	18.50	20:15	49.92	18.00	18.30
8:30	50.00	18.00	18.50	20:30	49.95	18.00	18.31
8:45	49.97	18.00	18.48	20:45	49.96	18.00	18.28
9:00	49.95	18.00	18.50	21:00	49.99	18.00	18.29
9:15	49.98	18.00	18.49	21:15	49.94	18.00	18.28
9:30	49.96	18.00	18.48	21:30	50.02	18.00	18.29
9:45	50.01	18.00	18.49	21:45	50.00	18.00	18.28
10:00	49.98	18.00	18.51	22:00	50.04	18.00	18.30
10:15	49.99	18.00	18.48	22:15	49.95	18.00	18.28
10:30	49.99	18.00	18.50	22:30	49.97	18.00	18.30
10:45	49.98	18.00	18.49	22:45	49.92	18.00	18.30
11:00	50.04	18.00	18.50	23:00	50.00	18.00	18.28
11:15	50.03	18.00	18.50	23:15	50.02	18.00	18.09
11:30	49.96	18.00	18.26	23:30	49.98	18.00	18.08
11:45	49.98	18.00	18.30	23:45	49.96	18.00	16.01

Yours faithfully,
Karma Yangden



འབྲུག་རྒྱལ་ཁོག་མེ་ལམ་འཛིན།

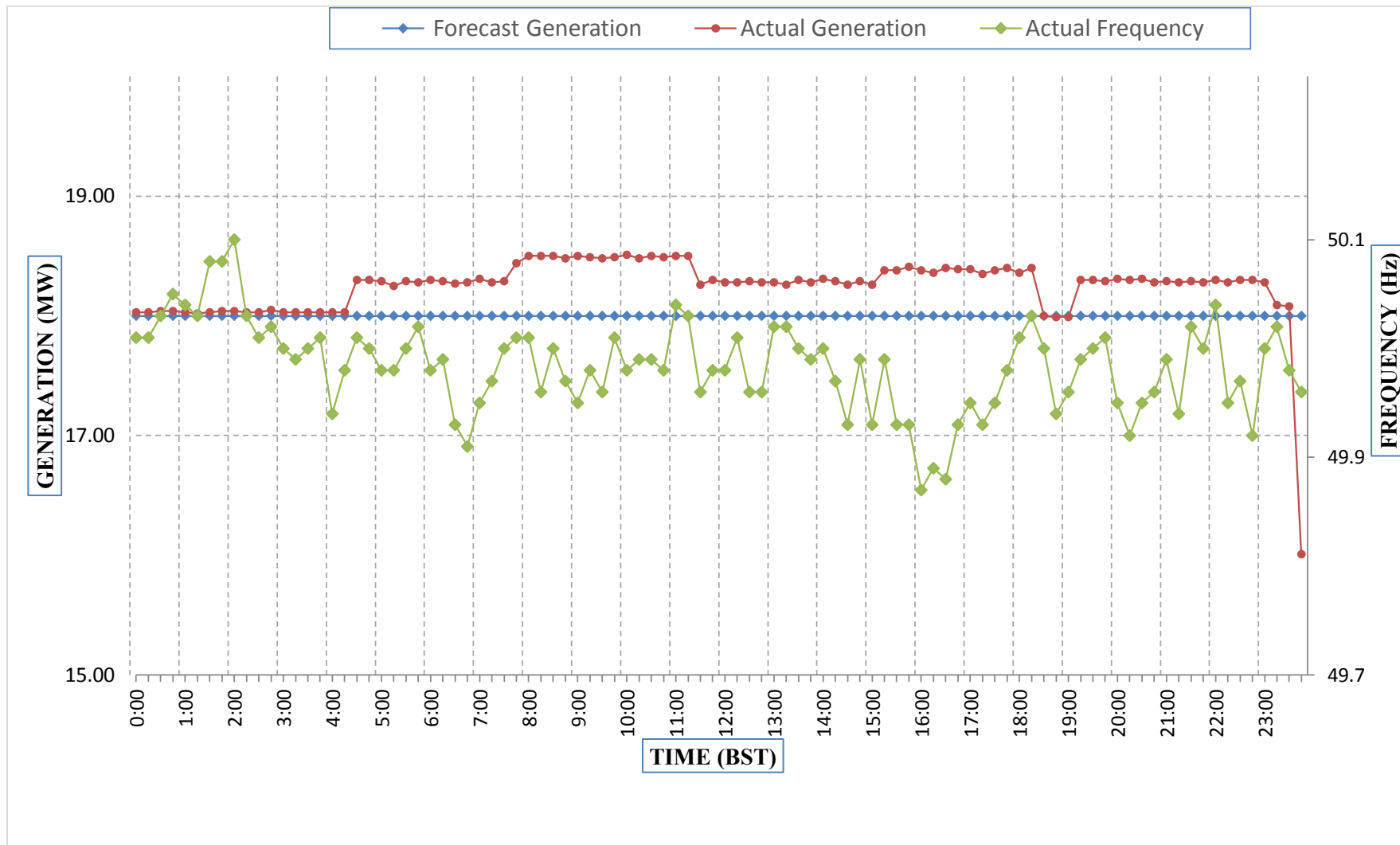
Bhutan Power Corporation Ltd.
Bhutan Power System Operator
Thimphu: Bhutan



Message No.: Enter your message number
From: Shift In-charge, Control Room

Date: 13-Feb-18
Time: 10:26

Forecast Generation & Actual Generation of Dagachhu(12-Feb-2018).



Yours faithfully,
Karma Yangden