



འབྲུག་ཤོག་མེ་ལམ་འཛིན།

Bhutan Power Corporation Ltd.
Bhutan Power System Operator
Thimphu: Bhutan



Message No.: Enter your message number
From: Shift In-charge, Control Room

Date: 12-Feb-18
Time: 12:24

To
Managing Director, BPC. Email: gemtshering@bpc.bt
Director, O&MD, DGPC. Email: director.umd@drukgreen.com
General Manager, TD, BPC. Email: ktobgye@bpc.bt
General Manager, DCSD, BPC. Email: sandeeprai@bpc.bt

Sub: **Load Generation Balance Report of Yesterday (11-Feb-2018).**

Hours (BST)	Forecast		Actual		Hours (BST)	Forecast		Actual	
	Generation	Load	Generation	Load		Generation	Load	Generation	Load
0:00	276.50	271.20	289.96	278.69	12:00	230.80	288.10	279.59	283.45
0:15	276.50	266.30	288.98	279.52	12:15	230.80	288.00	280.26	297.92
0:30	276.50	259.10	288.85	274.65	12:30	230.80	287.10	273.63	291.88
0:45	276.50	265.00	288.13	278.66	12:45	230.80	277.70	278.58	233.04
1:00	276.50	266.10	289.84	277.83	13:00	230.80	276.80	278.69	294.34
1:15	239.50	263.70	290.02	274.52	13:15	230.80	273.10	270.09	283.60
1:30	239.50	250.10	289.28	272.20	13:30	230.80	275.30	269.08	283.63
1:45	239.50	236.10	287.67	272.77	13:45	230.80	271.20	269.28	260.60
2:00	239.50	228.50	288.84	264.18	14:00	230.80	274.50	268.48	279.72
2:15	239.50	214.10	289.03	267.38	14:15	230.80	278.50	266.59	277.63
2:30	239.50	205.50	288.51	275.77	14:30	230.80	279.10	268.81	284.94
2:45	239.50	205.50	290.09	271.80	14:45	230.80	280.10	268.55	287.85
3:00	239.50	206.00	289.34	270.06	15:00	230.80	279.00	269.92	272.73
3:15	239.50	212.60	290.07	275.05	15:15	230.80	278.80	251.95	274.74
3:30	239.50	217.40	290.11	275.47	15:30	230.80	282.40	270.55	270.75
3:45	239.50	215.60	288.63	273.61	15:45	230.80	283.80	268.84	268.72
4:00	239.50	220.50	288.59	272.54	16:00	230.80	280.50	270.46	275.25
4:15	239.50	231.10	280.52	272.14	16:15	230.80	285.80	269.84	273.74
4:30	239.50	240.10	280.67	270.09	16:30	230.80	287.40	268.27	275.01
4:45	239.50	241.70	277.84	273.74	16:45	230.80	294.00	269.80	280.56
5:00	239.50	247.90	279.93	271.35	17:00	230.80	295.50	270.03	290.27
5:15	239.50	260.60	278.61	276.11	17:15	243.40	303.30	269.15	292.05
5:30	239.50	265.60	279.12	281.48	17:30	243.40	307.40	268.88	291.82
5:45	239.50	267.10	280.52	280.43	17:45	243.40	316.10	268.33	302.81
6:00	239.50	269.30	278.98	281.55	18:00	243.40	326.20	268.79	312.86
6:15	252.10	276.50	278.59	283.70	18:15	261.50	335.10	268.62	307.10
6:30	252.10	300.10	279.49	293.13	18:30	261.50	341.50	268.97	310.73
6:45	252.10	313.50	278.02	298.52	18:45	261.50	341.60	264.41	317.98
7:00	252.10	325.10	278.15	306.88	19:00	261.50	341.40	268.78	319.37
7:15	263.10	329.50	278.91	313.44	19:15	261.50	336.80	270.23	327.65
7:30	263.10	338.70	291.72	301.84	19:30	261.50	332.30	270.86	325.88
7:45	263.10	335.60	291.47	314.70	19:45	261.50	330.80	268.95	324.62
8:00	263.10	318.90	291.40	316.26	20:00	261.50	322.80	269.02	321.70
8:15	263.10	286.30	291.31	307.95	20:15	261.50	322.50	269.27	313.46
8:30	263.10	257.00	291.05	293.12	20:30	261.50	319.70	269.05	311.88
8:45	263.10	252.60	290.88	293.66	20:45	261.50	315.80	269.63	313.18
9:00	263.10	325.70	291.56	295.47	21:00	261.50	315.30	269.20	305.36
9:15	250.50	298.20	291.63	289.57	21:15	248.90	315.60	268.80	317.71
9:30	250.50	296.40	291.24	286.49	21:30	248.90	309.10	268.63	311.20
9:45	250.50	296.30	290.81	293.95	21:45	248.90	305.00	268.82	310.57
10:00	250.50	295.50	291.09	288.80	22:00	248.90	301.50	267.23	303.91
10:15	250.50	295.60	278.68	280.81	22:15	242.60	295.70	259.90	301.83
10:30	250.50	293.80	275.82	275.64	22:30	242.60	292.80	268.61	292.02
10:45	250.50	290.80	278.48	273.05	22:45	242.60	287.60	269.74	273.30
11:00	250.50	290.40	279.03	282.70	23:00	242.60	279.80	270.70	276.03
11:15	230.80	290.50	278.53	284.07	23:15	226.80	277.70	289.58	258.50
11:30	230.80	291.20	279.98	293.23	23:30	226.80	274.80	289.88	259.84
11:45	230.80	291.10	280.58	294.66	23:45	226.80	273.40	288.65	257.73

Yours faithfully
Phub Zam

Coincidental peak load of Day(Last year):	
290.14	11-Feb-17
Maximum Load till date:	
362.09	14-Nov-17



འབྲུག་གློག་ཤིང་ལས་འཛིན།

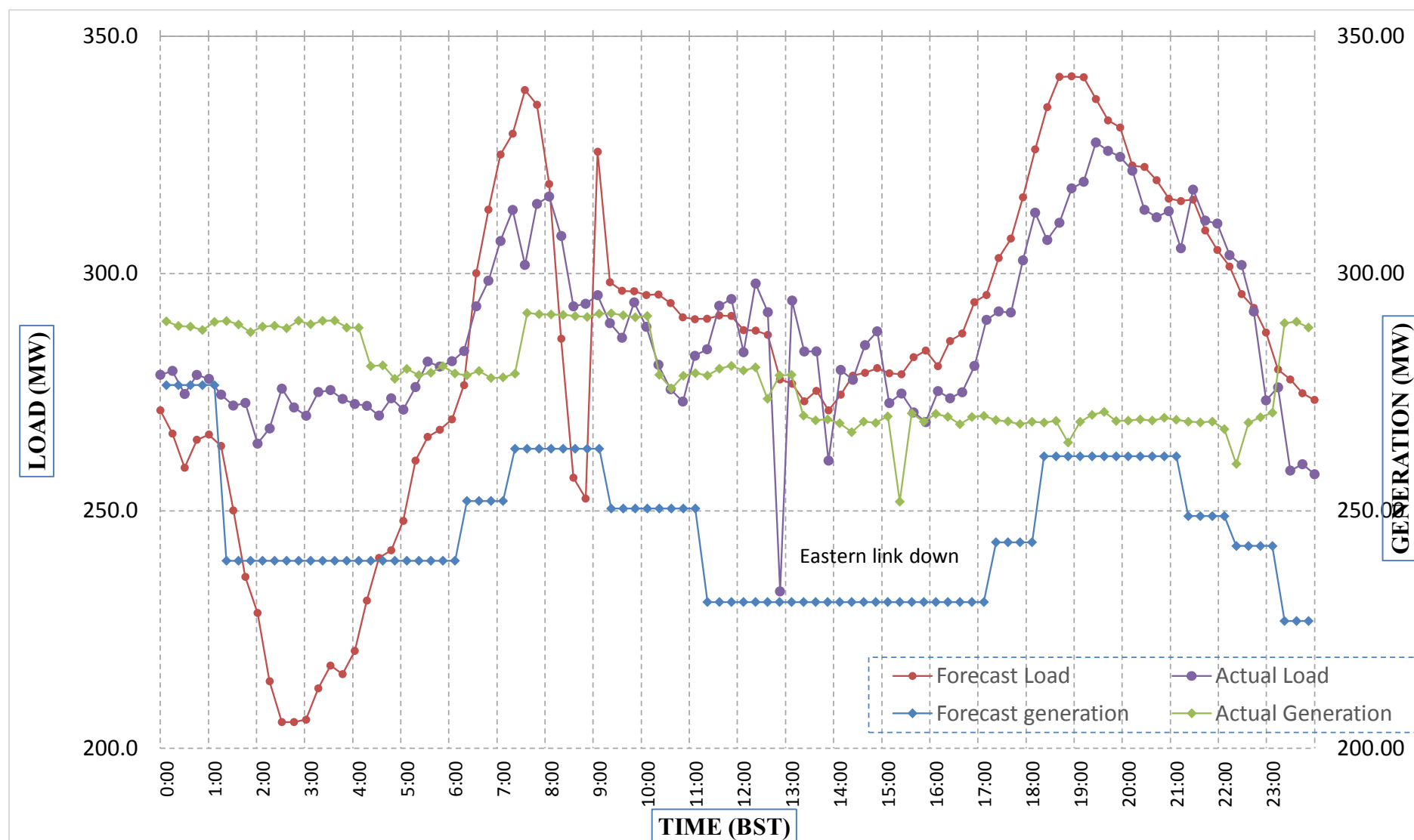
Bhutan Power Corporation Ltd.
Bhutan Power System Operator
Thimphu: Bhutan



Message No.: Enter your message number
From: Shift In-charge, Control Room

Date: 12-Feb-18
Time: 12:24

Forecast Generation & Load with Actual Generation & Load (11-Feb-2018).



Yours faithfully,
Phub Zam

	MW	Coincidental peak load of Day(Last year):	
Peak Co-incident Generation(11-Feb-2018).	291.72	290.14	11-Feb-17
Peak Co-incident Load(11-Feb-2018).	327.65		
		Maximum Load till date:	
		362.09	14-Nov-17

Telephone: +975-02335631; Fax: +975-02335632; Email: bhutansystemoperator@bpc.bt; www.bpc.bt



འབྲུག་གློག་ལེ་ལས་འཛིན།

Bhutan Power Corporation Ltd.
Bhutan Power System Operator
Thimphu: Bhutan



Message No.: Enter your message number
From: Shift In-charge, Control Room

Date: 12-Feb-18
Time: 12:24

To
Managing Director, BPC. Email: gemtshering@bpc.bt
Director, O&MD, DGPC. Email: director.umd@drukgreen.com
General Manager, TD, BPC. Email: thinleygyeltshen@bpc.bt
General Manager, DCSD, BPC. Email: sandeeprai@bpc.bt

Sub: Load Generation Balance Report of Today (12-Feb-2018).

Hours (BST)	Forecast		Actual	
	Generation	Load	Generation	Load
0:00	270.30	270.30	289.59	255.91
0:15	267.10	267.10	289.29	255.97
0:30	259.70	259.70	288.94	252.37
0:45	265.90	265.90	289.84	252.07
1:00	268.20	268.20	289.13	248.67
1:15	266.20	266.20	288.39	246.30
1:30	251.70	251.70	289.55	244.68
1:45	236.70	236.70	288.70	244.99
2:00	229.20	229.20	288.99	245.59
2:15	214.60	214.60	289.92	251.27
2:30	205.00	205.00	289.63	250.87
2:45	206.20	206.20	288.70	251.74
3:00	205.80	205.80	289.36	253.15
3:15	211.70	211.70	288.33	252.42
3:30	216.60	216.60	289.76	254.11
3:45	214.40	214.40	289.93	244.05
4:00	218.80	218.80	289.08	246.99
4:15	229.80	229.80	289.55	245.00
4:30	239.10	239.10	288.52	250.49
4:45	240.30	240.30	290.30	252.75
5:00	247.70	247.70	289.03	261.99
5:15	261.90	261.90	289.45	261.33
5:30	265.50	265.50	290.40	267.88
5:45	266.90	266.90	289.95	271.41
6:00	269.60	269.60	289.78	276.20
6:15	276.50	276.50	290.16	281.81
6:30	301.10	301.10	290.15	299.98
6:45	314.70	314.70	288.85	317.44
7:00	327.40	327.40	288.85	324.61
7:15	330.90	330.90	289.13	324.59
7:30	338.30	338.30	289.48	318.47
7:45	335.70	335.70	289.96	322.43
8:00	319.30	319.30	288.82	316.54
8:15	287.80	287.80	289.71	312.33
8:30	256.60	256.60	288.76	309.73
8:45	254.00	254.00	301.61	322.34
9:00	323.50	323.50	302.42	318.21

Yours faithfully,
Phub Zam

Coincidental peak load of Day(Last year):	
286.06	12-Feb-17

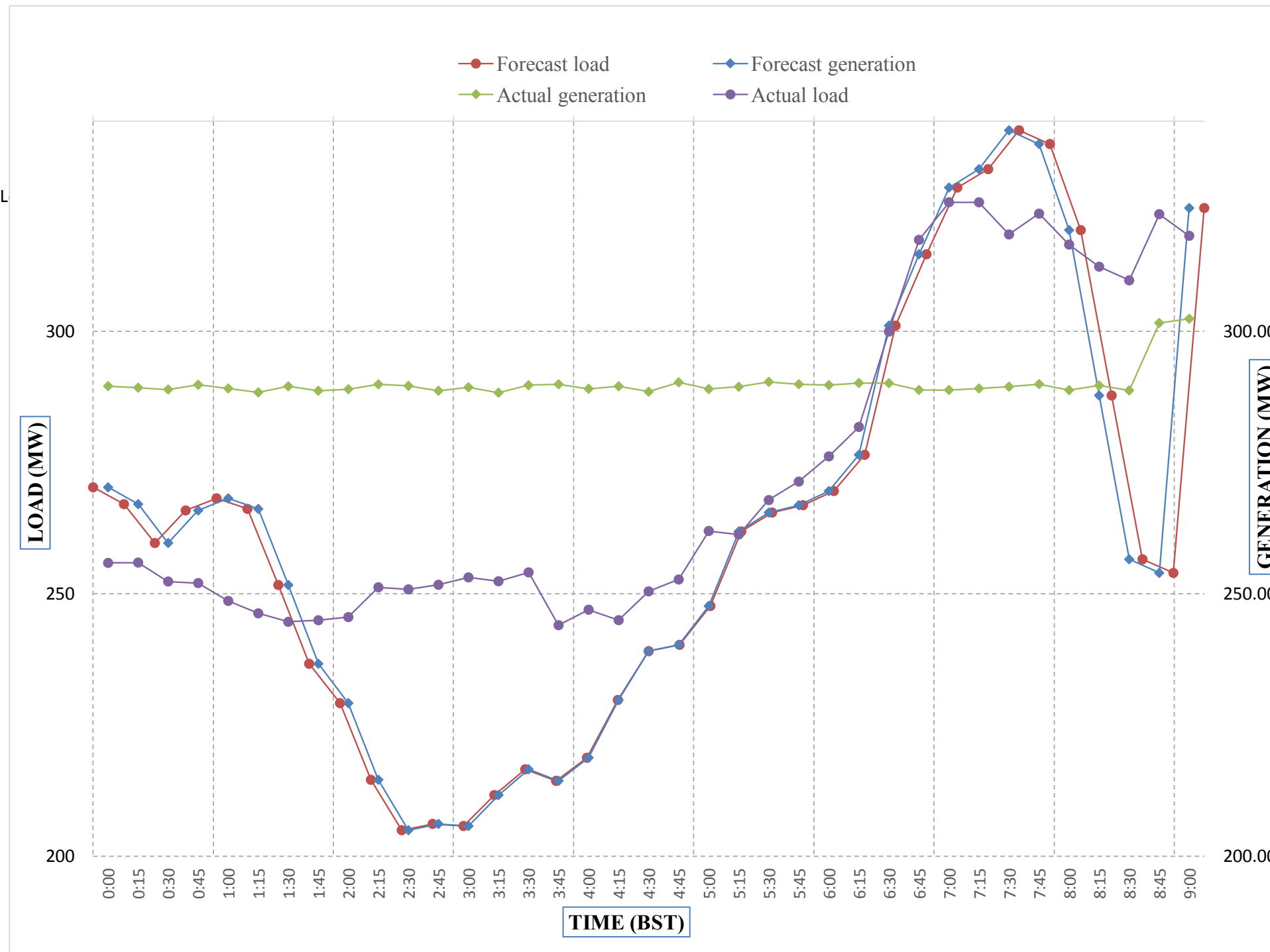
Maximum Load till date:	
362.09	14-Nov-17



Message No.: Enter your message number
 From: Shift In-charge, Control Room

2/10/2018 11:10 12-Feb-18
 2/10/2018 11:10 12:24

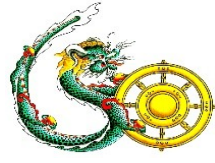
Forecast Generation & Load with Actual Generation & Load of Today from 00:00hrs to 09:00hrs(12-Feb-2018).



Yours faithfully
 Phub Zam



འབྲུག་གྲོག་ལེན་ལྷན་ཁག་།
Bhutan Power Corporation Ltd.
Bhutan Power System Operator
 Thimphu: Bhutan



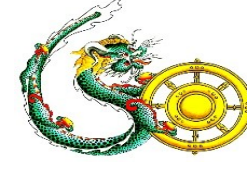
Message No.: Enter your message number **Date:** 12-Feb-18
From: Shift In-charge, Control Room **Time:** 12:24

To
 Managing Director, BPC. Email: gemtshering@bpc.bt
 Director, O&MD, DGPC. Email: director.omid@drukgreen.com
 General Manager, TD, BPC. Email: ktobgye@bpc.bt
 Advisor, BPC. Email: bharattamang@bpc.bt

Sub: Load Generation Balance Report of Tomorrow (13-Feb-2018).

Hours (BST)	Forecast		Hours (BST)	Forecast	
	Generation	Load		Generation	Load
0:00	276.20	276.20	12:00	292.00	292.00
0:15	298.20	278.20	12:15	283.10	294.70
0:30	293.40	273.40	12:30	283.10	293.00
0:45	297.70	277.70	12:45	283.10	283.10
1:00	300.30	280.30	13:00	281.10	285.70
1:15	290.40	270.40	13:15	281.10	281.10
1:30	261.90	241.90	13:30	274.00	281.50
1:45	263.60	243.60	13:45	274.00	274.00
2:00	253.50	233.50	14:00	278.50	280.10
2:15	248.80	228.80	14:15	278.50	281.90
2:30	237.70	217.70	14:30	278.50	283.90
2:45	242.50	222.50	14:45	278.50	284.20
3:00	246.30	231.30	15:00	278.50	281.40
3:15	255.30	240.30	15:15	278.50	280.00
3:30	263.50	248.50	15:30	278.50	279.30
3:45	269.40	254.40	15:45	278.50	279.20
4:00	272.60	257.60	16:00	278.50	278.50
4:15	276.50	261.50	16:15	278.50	281.60
4:30	281.40	266.40	16:30	283.80	283.80
4:45	282.20	267.20	16:45	283.80	290.80
5:00	281.00	266.00	17:00	286.40	293.40
5:15	289.60	274.60	17:15	297.50	297.50
5:30	292.00	277.00	17:30	304.70	304.70
6:45	277.70	277.70	17:45	314.10	314.40
6:00	277.80	277.80	18:00	317.50	325.60
6:15	278.70	278.70	18:15	328.50	328.50
6:30	295.80	295.80	18:30	330.10	337.20
6:45	305.00	305.00	18:45	330.10	339.00
7:00	318.40	318.40	19:00	330.10	339.30
7:15	323.50	323.50	19:15	330.10	337.50
7:30	324.10	324.60	19:30	330.10	333.00
7:45	324.10	327.90	19:45	323.40	330.50
8:00	324.10	324.10	20:00	323.40	327.00
8:15	314.40	314.40	20:15	323.40	323.40
8:30	299.90	299.90	20:30	322.10	322.10
8:45	265.30	265.30	20:45	241.90	316.80
9:00	304.10	304.10	21:00	241.90	320.50
9:15	293.00	312.70	21:15	241.90	319.10
9:30	293.00	298.50	21:30	241.90	312.80
9:45	293.00	299.20	21:45	241.30	306.30
10:00	293.00	297.90	22:00	306.50	306.50
10:15	292.00	293.90	22:15	305.50	305.50
10:30	292.00	292.00	22:30	308.90	308.90
10:45	289.80	289.80	22:45	300.80	300.80
11:00	291.30	291.30	23:00	291.20	295.90
11:15	292.00	295.00	23:15	291.20	296.70
11:30	292.00	296.80	23:30	291.20	291.20
11:45	292.00	296.20	23:45	124.70	282.80

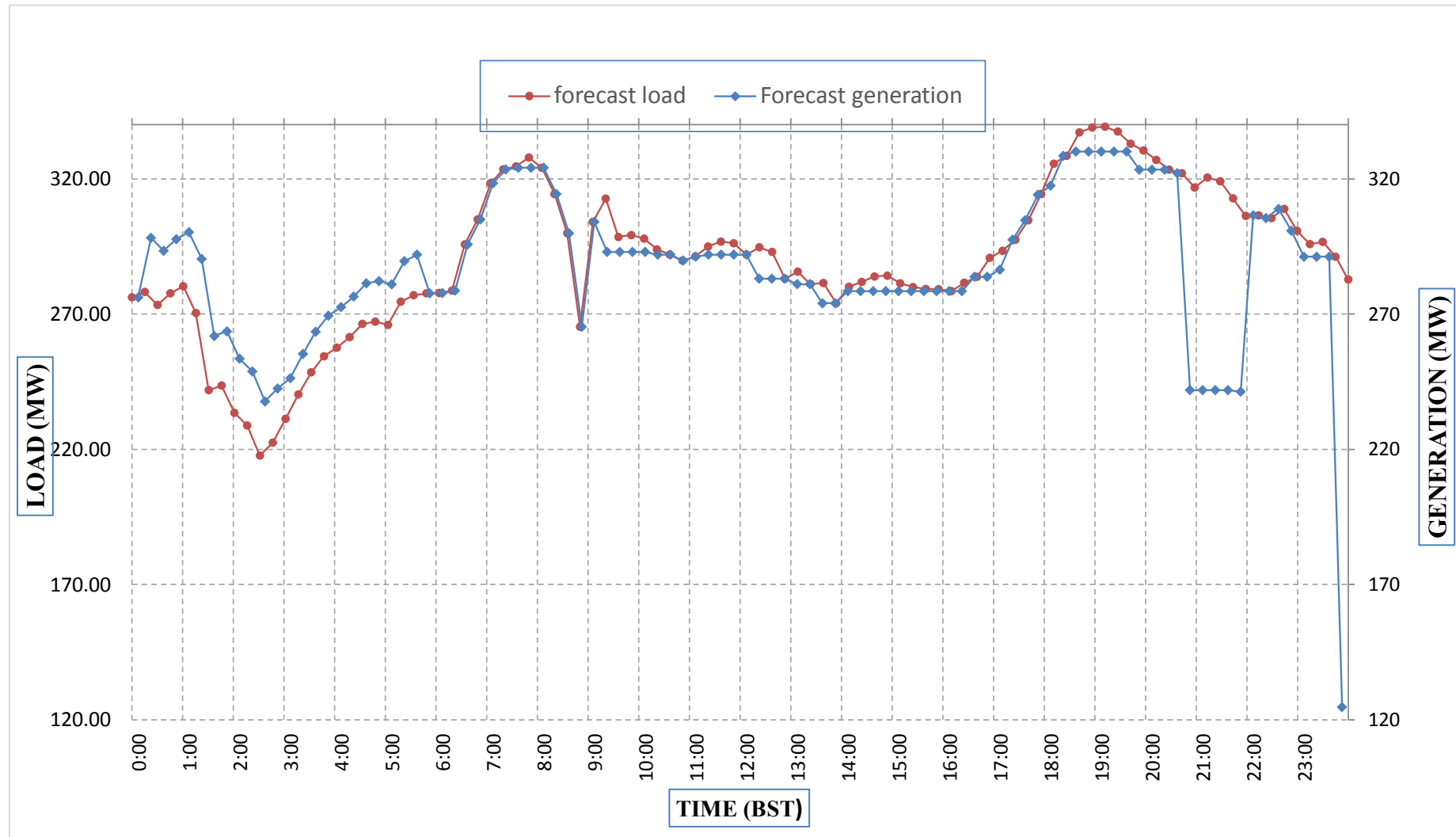
Yours faithfully,
 Phub Zam



Message No.: Enter your message number
 From: Shift In-charge, Control Room

Date: 12-Feb-18
 Time: 11:10

Forecast Generation & Load Forecast for Tomorrow (13-Feb-2018).



Yours faithfully,
 Phub Zam

	MW
Scheduled Peak Generation(13-Feb-2018).	330.10
Forecast Peak Load(13-Feb-2018).	339.30



ཕུག་ལྷན་དུ་བྱེད་པའི་ལས་འཛིན།

Bhutan Power Corporation Ltd.
Bhutan Power System Operator
Thimphu: Bhutan



Message No.: Enter your message number Date: 12-Feb-18
From: Shift In-charge, Control Room Time: 12:24

To
Managing Director, BPC. Email: gemtshering@bpc.bt
Director, O&MD, DGPC. Email: director.umd@drukgreen.com
General Manager, TD, BPC. Email: ktobgye@bpc.bt
Advisor, BPC. Email: bharattamang@bpc.bt

Sub: Forecast Generation and Actual Generation of Dagachhu (11-Feb-2018).

Hours (BST)	Actual Frequency	Forecast Generation	Actual Generation	Hours (BST)	Actual Frequency	Forecast Generation	Actual Generation
0:00	50.01	17.80	18.49	12:00	50.06	17.80	18.38
0:15	49.94	17.80	18.51	12:15	50.05	17.80	18.58
0:30	49.96	17.80	18.49	12:30	50.01	17.80	14.01
0:45	49.96	17.80	18.50	12:45	50.04	17.80	18.53
1:00	49.98	17.80	18.49	13:00	50.06	17.80	18.76
1:15	50.00	17.80	18.52	13:15	50.06	17.80	18.50
1:30	49.98	17.80	18.52	13:30	50.02	17.80	18.40
1:45	50.00	17.80	18.01	13:45	50.05	17.80	18.42
2:00	50.03	17.80	17.99	14:00	50.03	17.80	18.79
2:15	50.01	17.80	17.99	14:15	50.07	17.80	18.39
2:30	50.01	17.80	17.96	14:30	49.99	17.80	18.40
2:45	49.98	17.80	18.01	14:45	49.90	17.80	18.40
3:00	50.03	17.80	18.01	15:00	49.99	17.80	18.98
3:15	50.03	17.80	18.01	15:15	50.01	17.80	18.97
3:30	49.99	17.80	18.02	15:30	50.02	17.80	18.99
3:45	50.02	17.80	17.99	15:45	49.98	17.80	18.62
4:00	50.04	17.80	18.00	16:00	50.00	17.80	18.68
4:15	49.98	17.80	17.99	16:15	50.04	17.80	18.67
4:30	49.99	17.80	17.99	16:30	50.02	17.80	18.69
4:45	49.99	17.80	17.99	16:45	50.03	17.80	18.69
5:00	49.98	17.80	18.02	17:00	50.03	17.80	18.68
5:15	49.94	17.80	18.03	17:15	50.07	17.80	18.46
5:30	50.00	17.80	18.01	17:30	49.96	17.80	18.48
6:45	50.02	17.80	18.00	17:45	49.97	17.80	18.50
6:00	50.03	17.80	18.01	18:00	50.02	17.80	18.49
6:15	50.03	17.80	18.00	18:15	50.00	17.80	18.52
6:30	50.00	17.80	18.03	18:30	50.00	17.80	18.50
6:45	49.98	17.80	18.01	18:45	49.97	17.80	14.98
7:00	50.02	17.80	18.02	19:00	49.98	17.80	18.61
7:15	50.02	17.80	18.01	19:15	49.95	17.80	18.63
7:30	49.97	17.80	18.00	19:30	49.98	17.80	18.61
7:45	49.99	17.80	18.01	19:45	49.98	17.80	18.62
8:00	49.96	17.80	18.02	20:00	49.97	17.80	18.65
8:15	49.98	17.80	18.01	20:15	50.02	17.80	18.63
8:30	49.92	17.80	18.03	20:30	49.99	17.80	18.61
8:45	49.98	17.80	18.01	20:45	50.01	17.80	18.62
9:00	50.00	17.80	18.01	21:00	49.93	17.80	18.63
9:15	49.98	17.80	18.17	21:15	49.95	17.80	18.04
9:30	49.95	17.80	18.18	21:30	50.01	17.80	18.03
9:45	49.98	17.80	18.18	21:45	50.01	17.80	18.02
10:00	50.06	17.80	18.19	22:00	50.07	17.80	18.04
10:15	50.04	17.80	18.29	22:15	50.02	17.80	18.03
10:30	50.02	17.80	15.98	22:30	50.02	17.80	18.03
10:45	50.03	17.80	17.69	22:45	50.02	17.80	18.05
11:00	50.03	17.80	18.30	23:00	50.03	17.80	18.03
11:15	49.99	17.80	18.28	23:15	50.04	17.80	18.03
11:30	49.99	17.80	18.41	23:30	50.03	17.80	18.04
11:45	49.99	17.80	18.41	23:45	50.04	17.80	18.02

Yours faithfully,
Phub Zam



ཕན། འདུག་གྲོག་མེ་ལས་འཛིན།

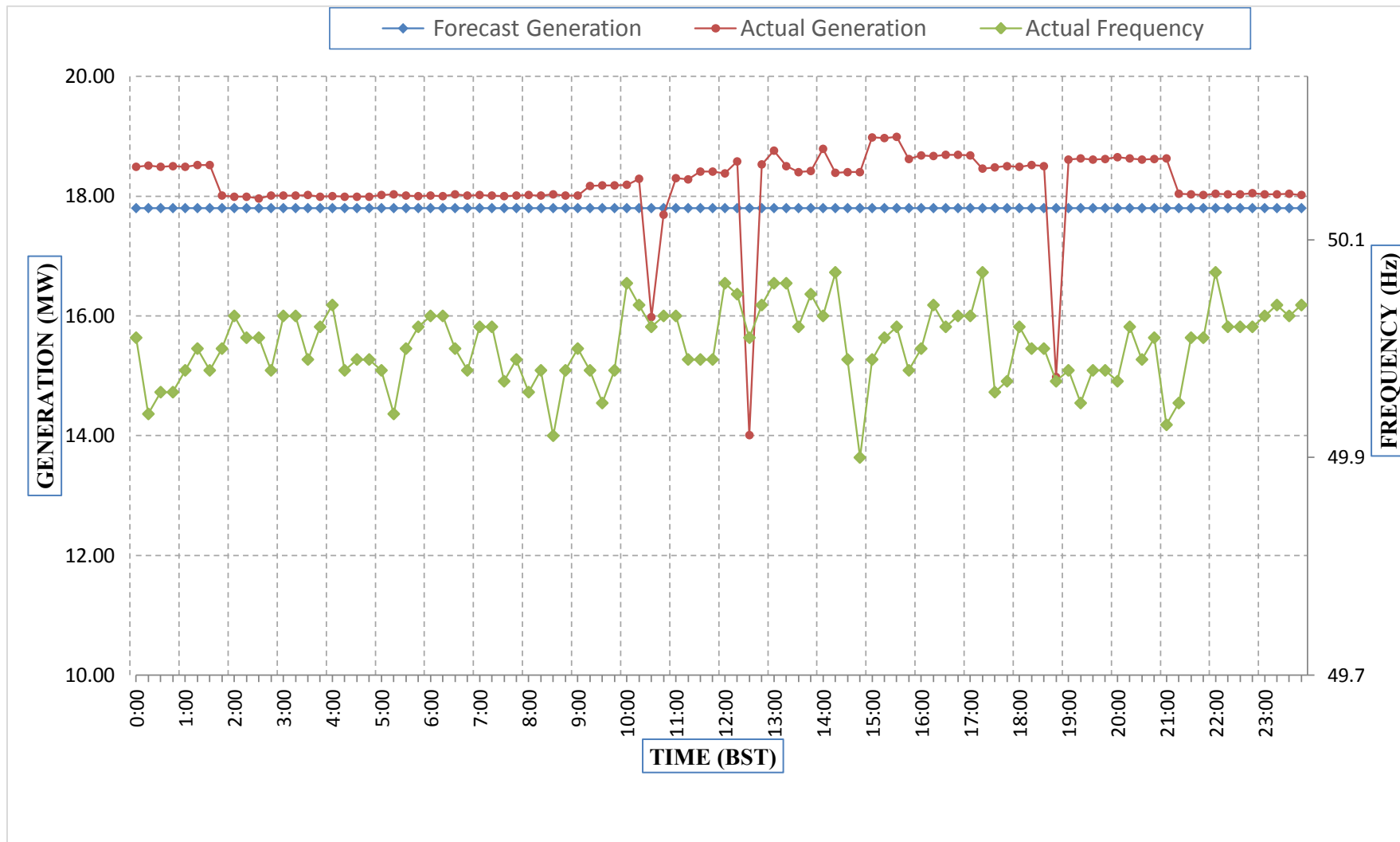
Bhutan Power Corporation Ltd.
Bhutan Power System Operator
Thimphu: Bhutan



Message No.: Enter your message number
From: Shift In-charge, Control Room

Date: 12-Feb-18
Time: 12:36

Forecast Generation & Actual Generation of Dagachhu(11-Feb-2018).



Yours faithfully,
Phub Zam