



**འབྲུག་གྲོག་ལེ་ལས་འཛིན།**  
**Bhutan Power Corporation Ltd.**  
**Bhutan Power System Operator**  
**Thimphu: Bhutan**



**Message No.:** Enter your message number  
**From:** Shift In-charge, Control Room

**Date:** 11-Feb-18  
**Time:** 11:10

**To**  
 Managing Director, BPC. Email: gemtshering@bpc.bt  
 Director, O&MD, DGPC. Email: director.umd@drukgreen.com  
 General Manager, TD, BPC. Email: ktobgye@bpc.bt  
 General Manager, DCSD, BPC. Email: sandeeprai@bpc.bt

**Sub:** Load Generation Balance Report of Yesterday (10-Feb-2018).

Hours (BST)	Forecast		Actual		Hours (BST)	Forecast		Actual	
	Generation	Load	Generation	Load		Generation	Load	Generation	Load
0:00	281.50	270.20	287.74	246.80	12:00	233.40	289.90	283.19	306.58
0:15	281.50	267.10	290.10	256.16	12:15	233.40	289.80	272.48	298.12
0:30	281.50	259.00	287.76	260.65	12:30	233.40	288.10	271.80	294.96
0:45	281.50	265.10	286.59	262.64	12:45	233.40	277.10	272.68	287.05
1:00	281.50	260.30	287.43	260.01	13:00	233.40	278.50	273.12	292.93
1:15	243.60	257.90	284.78	259.16	13:15	233.40	274.40	272.20	294.40
1:30	243.60	258.10	283.69	259.32	13:30	233.40	276.50	272.80	295.05
1:45	243.60	253.50	283.73	257.21	13:45	233.40	273.80	272.43	290.49
2:00	243.60	249.70	284.50	260.85	14:00	233.40	278.00	272.15	287.34
2:15	243.60	241.50	283.66	255.20	14:15	233.40	281.60	273.32	287.54
2:30	243.60	234.20	284.29	255.91	14:30	233.40	282.20	272.61	294.66
2:45	243.60	222.20	282.32	256.70	14:45	233.40	281.10	274.18	289.98
3:00	243.60	219.50	283.14	257.68	15:00	233.40	280.40	273.34	297.98
3:15	243.60	218.40	281.90	255.88	15:15	233.40	279.10	272.79	284.01
3:30	243.60	218.60	283.33	251.80	15:30	233.40	282.10	273.90	273.07
3:45	243.60	217.00	281.66	249.20	15:45	233.40	284.50	273.23	273.51
4:00	243.60	209.70	281.35	255.98	16:00	233.40	281.50	272.84	271.84
4:15	243.60	213.80	281.04	257.12	16:15	233.40	287.30	272.77	277.58
4:30	243.60	214.00	282.41	265.88	16:30	233.40	288.30	273.32	285.14
4:45	243.60	218.40	281.91	296.66	16:45	233.40	294.80	273.34	289.53
5:00	243.60	218.50	282.09	283.26	17:00	233.40	297.10	272.77	289.34
5:15	243.60	225.30	282.16	285.25	17:15	246.00	302.30	273.61	303.97
5:30	243.60	233.20	282.15	286.29	17:30	246.00	309.70	272.56	311.79
5:45	243.60	233.40	281.96	278.71	17:45	246.00	318.90	271.51	318.91
6:00	243.60	239.30	282.25	278.80	18:00	246.00	330.60	272.16	333.10
6:15	256.20	253.10	282.05	269.11	18:15	266.50	339.70	285.90	343.63
6:30	256.20	285.70	282.20	284.34	18:30	266.50	346.50	285.95	351.71
6:45	256.20	303.40	252.66	288.00	18:45	266.50	345.30	286.52	357.21
7:00	256.20	315.80	253.57	301.56	19:00	266.50	345.60	287.59	356.88
7:15	268.10	324.10	323.10	309.42	19:15	266.50	343.50	289.59	351.51
7:30	268.10	331.70	323.38	308.98	19:30	266.50	337.10	287.77	345.64
7:45	268.10	306.70	322.28	312.15	19:45	266.50	335.00	288.42	343.46
8:00	268.10	282.00	322.01	307.43	20:00	266.50	325.10	289.24	350.78
8:15	268.10	257.40	322.66	301.30	20:15	266.50	326.60	288.29	337.88
8:30	268.10	248.70	322.82	299.59	20:30	266.50	324.90	288.96	344.45
8:45	268.10	281.70	322.88	299.85	20:45	266.50	321.70	287.27	335.98
9:00	268.10	313.40	321.46	300.12	21:00	266.50	322.30	288.44	341.48
9:15	255.40	300.00	281.95	316.06	21:15	253.90	318.00	277.31	337.62
9:30	255.40	300.00	283.22	316.64	21:30	253.90	311.30	280.17	332.48
9:45	255.40	297.50	282.81	311.31	21:45	253.90	304.40	279.13	316.63
10:00	255.40	298.50	283.73	308.10	22:00	253.90	304.10	279.39	309.98
10:15	255.40	297.20	281.85	305.38	22:15	245.20	298.10	279.38	305.74
10:30	255.40	295.10	280.98	305.80	22:30	245.20	295.80	290.37	305.10
10:45	255.40	293.20	279.96	304.50	22:45	245.20	290.00	288.67	297.17
11:00	255.40	292.30	282.22	297.66	23:00	245.20	283.00	288.38	293.41
11:15	233.40	291.10	281.38	309.05	23:15	231.00	280.40	289.08	290.81
11:30	233.40	292.90	282.20	311.15	23:30	231.00	279.70	289.51	287.16
11:45	233.40	292.40	282.35	308.39	23:45	231.00	278.00	289.54	286.24

Yours faithfully  
 Tshering Deki

Coincidental peak load of Day (Last year):	
301.07	10-Feb-17
Maximum Load till date:	
362.09	14-Nov-17



འབྲུག་གྲོག་མེ་ལས་འཛིན།

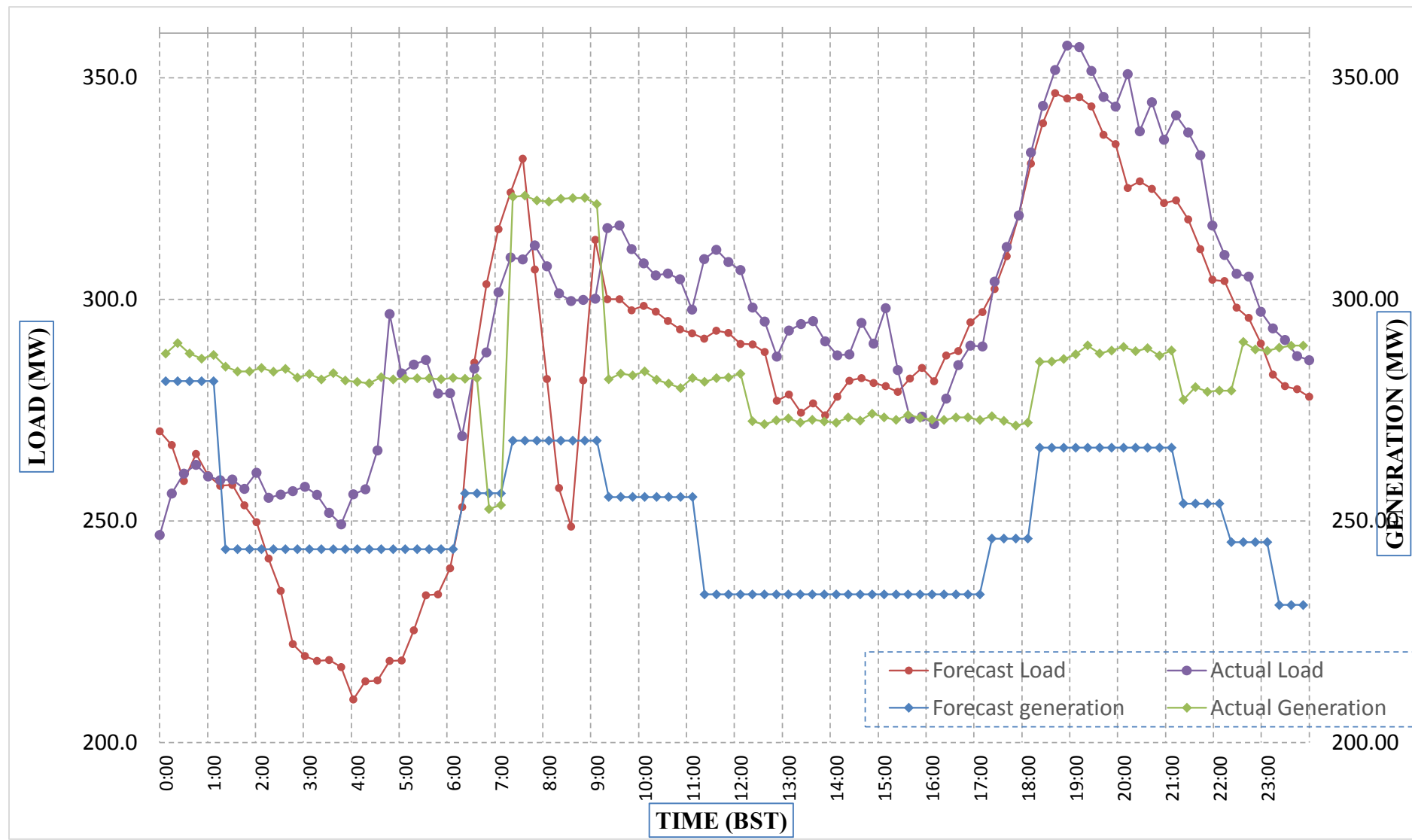
Bhutan Power Corporation Ltd.  
Bhutan Power System Operator  
Thimphu: Bhutan



Message No.: Enter your message number  
From: Shift In-charge, Control Room

Date: 11-Feb-18  
Time: 11:10

Forecast Generation & Load with Actual Generation & Load (10-Feb-2018).



Yours faithfully,  
Tshering Deki

	MW	Coincidental peak load of Day(Last year):	
Peak Co-incident Generation(10-Feb-2018).	323.38	301.07	10-Feb-17
Peak Co-incident Load(10-Feb-2018).	357.21		
		Maximum Load till date:	
		362.09	14-Nov-17

Telephone: +975-02335631; Fax: +975-02335632; Email: bhutansystemoperator@bpc.bt; www.bpc.bt



འབྲུག་གྲོག་མོ་ལས་འཛིན།

Bhutan Power Corporation Ltd.  
Bhutan Power System Operator  
Thimphu: Bhutan



Message No.: Enter your message number  
From: Shift In-charge, Control Room

Date: 11-Feb-18  
Time: 11:10

To

Managing Director, BPC. Email: gemtshering@bpc.bt  
Director, O&MD, DGPC. Email: director.umd@drukgreen.com  
General Manager, TD, BPC. Email: thinleygyeltshen@bpc.bt  
General Manager, DCSD, BPC. Email: sandeeprai@bpc.bt

Sub: Load Generation Balance Report of Today (11-Feb-2018).

Hours (BST)	Forecast		Actual	
	Generation	Load	Generation	Load
0:00	276.50	271.20	289.96	278.69
0:15	276.50	266.30	288.98	279.52
0:30	276.50	259.10	288.85	274.65
0:45	276.50	265.00	288.13	278.66
1:00	276.50	266.10	289.84	277.83
1:15	239.50	263.70	290.02	274.52
1:30	239.50	250.10	289.28	272.20
1:45	239.50	236.10	287.67	272.77
2:00	239.50	228.50	288.84	264.18
2:15	239.50	214.10	289.03	267.38
2:30	239.50	205.50	288.51	275.77
2:45	239.50	205.50	290.09	271.80
3:00	239.50	206.00	289.34	270.06
3:15	239.50	212.60	290.07	275.05
3:30	239.50	217.40	290.11	275.47
3:45	239.50	215.60	288.63	273.61
4:00	239.50	220.50	288.59	272.54
4:15	239.50	231.10	280.52	272.14
4:30	239.50	240.10	280.67	270.09
4:45	239.50	241.70	277.84	273.74
5:00	239.50	247.90	279.93	271.35
5:15	239.50	260.60	278.61	276.11
5:30	239.50	265.60	279.12	281.48
5:45	239.50	267.10	280.52	280.43
6:00	239.50	269.30	278.98	281.55
6:15	252.10	276.50	278.59	283.70
6:30	252.10	300.10	279.49	293.13
6:45	252.10	313.50	278.02	298.52
7:00	252.10	325.10	278.15	306.88
7:15	263.10	329.50	278.91	313.44
7:30	263.10	338.70	291.72	301.84
7:45	263.10	335.60	291.47	314.70
8:00	263.10	318.90	291.40	316.26
8:15	263.10	286.30	291.31	307.95
8:30	263.10	257.00	291.05	293.12
8:45	263.10	252.60	290.88	293.66
9:00	263.10	325.70	291.56	295.47

Yours faithfully,  
Tshering Deki

Coincidental peak load of Day(Last year):	
290.14	11-Feb-17

Maximum Load till date:	
362.09	14-Nov-17



འབྲུག་གྲོག་མེ་ལས་འཛིན།

Bhutan Power Corporation Ltd.  
Bhutan Power System Operator  
Thimphu: Bhutan



Message No.: Enter your message number  
From: Shift In-charge, Control Room

2/10/2018 11:10 11-Feb-18  
2/10/2018 11:10 11:10

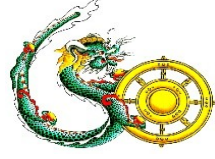
Forecast Generation & Load with Actual Generation & Load of Today from 00:00hrs to 09:00hrs(11-Feb-2018).



Yours faithfully  
Tshering Deki



འབྲུག་གྲོག་ལེ་ལམ་ལྷན་ཁག།  
**Bhutan Power Corporation Ltd.**  
**Bhutan Power System Operator**  
 Thimphu: Bhutan



**Message No.:** Enter your message number **Date:** 11-Feb-18  
**From:** Shift In-charge, Control Room **Time:** 11:10

**To**  
 Managing Director, BPC. Email: gemtshering@bpc.bt  
 Director, O&MD, DGPC. Email: director.omid@drukgreen.com  
 General Manager, TD, BPC. Email: ktobgye@bpc.bt  
 Advisor, BPC. Email: bharattamang@bpc.bt

**Sub:** Load Generation Balance Report of Tomorrow (12-Feb-2018).

Hours (BST)	Forecast		Hours (BST)	Forecast	
	Generation	Load		Generation	Load
0:00	270.30	270.30	12:00	290.80	290.80
0:15	267.10	267.10	12:15	290.90	290.90
0:30	259.70	259.70	12:30	289.40	289.40
0:45	265.90	265.90	12:45	279.30	279.30
1:00	268.20	268.20	13:00	279.50	279.50
1:15	266.20	266.20	13:15	275.40	275.40
1:30	251.70	251.70	13:30	277.10	277.10
1:45	236.70	236.70	13:45	272.80	272.80
2:00	229.20	229.20	14:00	276.40	276.40
2:15	214.60	214.60	14:15	279.10	279.10
2:30	205.00	205.00	14:30	279.80	279.80
2:45	206.20	206.20	14:45	280.70	280.70
3:00	205.80	205.80	15:00	279.70	279.70
3:15	211.70	211.70	15:15	278.90	278.90
3:30	216.60	216.60	15:30	282.10	282.10
3:45	214.40	214.40	15:45	284.30	284.30
4:00	218.80	218.80	16:00	280.00	280.00
4:15	229.80	229.80	16:15	284.40	284.40
4:30	239.10	239.10	16:30	285.90	285.90
4:45	240.30	240.30	16:45	293.90	293.90
5:00	247.70	247.70	17:00	295.00	295.00
5:15	261.90	261.90	17:15	301.10	301.10
5:30	265.50	265.50	17:30	305.40	305.40
6:45	266.90	266.90	17:45	314.90	314.90
6:00	269.60	269.60	18:00	324.50	324.50
6:15	276.50	276.50	18:15	329.00	333.90
6:30	301.10	301.10	18:30	329.00	339.80
6:45	314.70	314.70	18:45	329.00	339.90
7:00	327.40	327.40	19:00	329.00	340.30
7:15	330.90	330.90	19:15	329.00	334.90
7:30	338.30	338.30	19:30	329.00	330.60
7:45	335.70	335.70	19:45	328.20	328.20
8:00	319.30	319.30	20:00	320.60	320.60
8:15	287.80	287.80	20:15	320.00	320.00
8:30	256.60	256.60	20:30	316.80	316.80
8:45	254.00	254.00	20:45	312.90	312.90
9:00	323.50	323.50	21:00	312.90	313.10
9:15	297.80	297.80	21:15	312.40	312.40
9:30	298.00	298.00	21:30	305.60	305.60
9:45	296.60	296.60	21:45	301.60	301.60
10:00	295.30	295.30	22:00	298.30	298.30
10:15	295.90	295.90	22:15	287.20	292.60
10:30	294.90	294.90	22:30	287.20	289.40
10:45	291.20	291.20	22:45	284.00	284.00
11:00	291.40	291.40	23:00	275.90	275.90
11:15	292.50	292.50	23:15	233.90	274.70
11:30	292.90	292.90	23:30	192.80	271.70
11:45	293.80	293.80	23:45	192.80	270.30

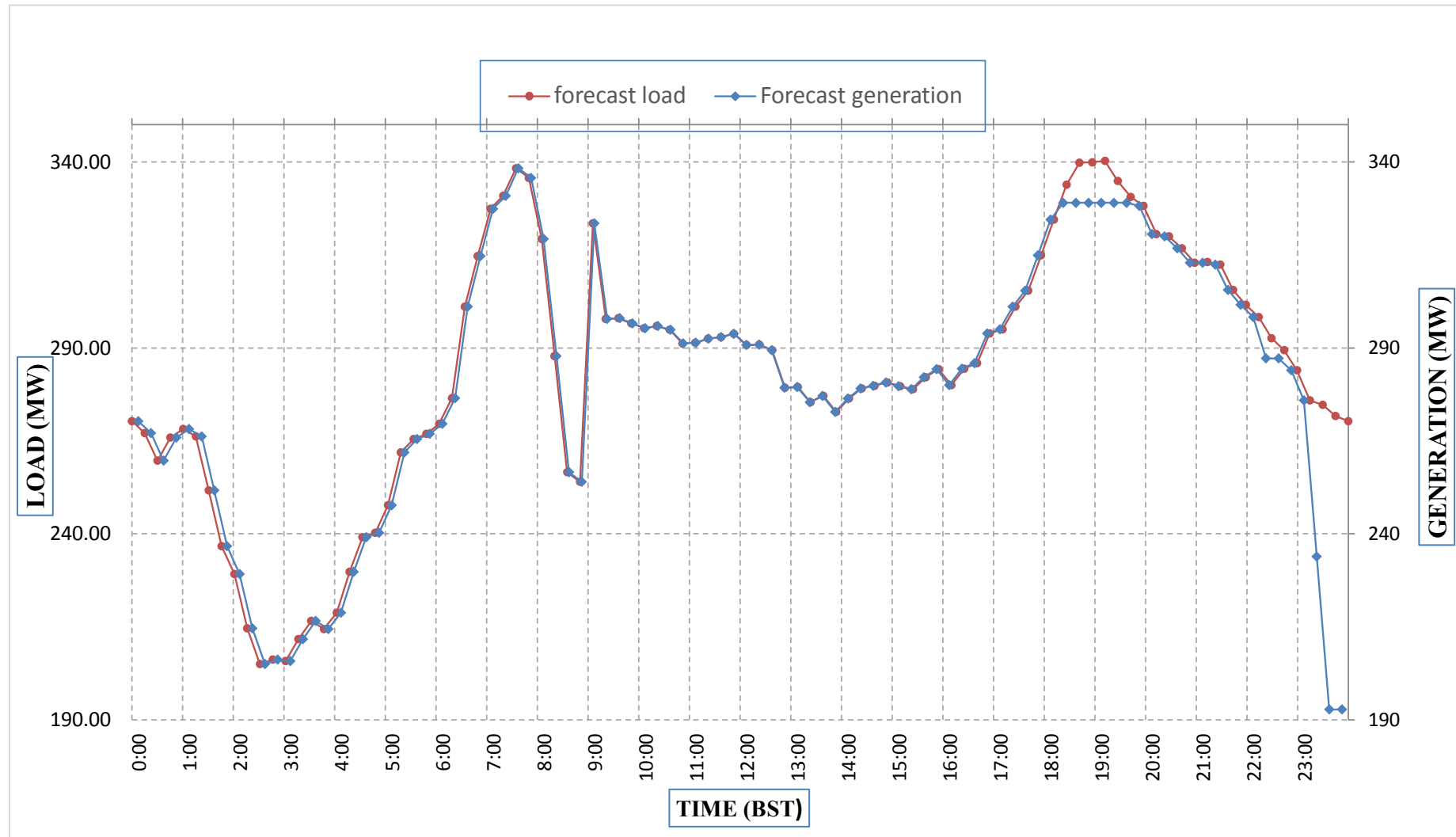
Yours faithfully,  
 Tshering Deki



Message No.: Enter your message number  
 From: Shift In-charge, Control Room

Date: 11-Feb-18  
 Time: 11:10

**Forecast Generation & Load Forecast for Tomorrow (12-Feb-2018).**



Yours faithfully,  
 Tshering Deki

	MW
Scheduled Peak Generation(12-Feb-2018).	338.30
Forecast Peak Load(12-Feb-2018).	340.30



འབྲུག་གྲོག་ཚེ་ལས་འདི་ན།

Bhutan Power Corporation Ltd.  
Bhutan Power System Operator  
Thimphu: Bhutan



Message No.: Enter your message number Date: 11-Feb-18  
From: Shift In-charge, Control Room Time: 11:10

To  
Managing Director, BPC. Email: gemtshering@bpc.bt  
Director, O&MD, DGPC. Email: director.umd@drukgreen.com  
General Manager, TD, BPC. Email: ktobgye@bpc.bt  
Advisor, BPC. Email: bharattamang@bpc.bt

Sub: Forecast Generation and Actual Generation of Dagachhu (10-Feb-2018).

Hours (BST)	Actual Frequency	Forecast Generation	Actual Generation	Hours (BST)	Actual Frequency	Forecast Generation	Actual Generation
0:00	49.97	17.80	18.79	12:00	49.93	17.80	18.30
0:15	49.97	17.80	18.79	12:15	49.97	17.80	18.30
0:30	49.98	17.80	18.81	12:30	49.98	17.80	18.29
0:45	49.98	17.80	18.79	12:45	49.98	17.80	18.49
1:00	49.99	17.80	18.80	13:00	49.97	17.80	18.51
1:15	50.02	17.80	18.78	13:15	49.97	17.80	18.77
1:30	49.98	17.80	18.59	13:30	49.96	17.80	18.81
1:45	50.00	17.80	18.61	13:45	49.95	17.80	18.79
2:00	49.99	17.80	18.60	14:00	49.89	17.80	18.80
2:15	49.99	17.80	18.59	14:15	49.93	17.80	19.00
2:30	49.98	17.80	18.59	14:30	49.96	17.80	18.99
2:45	49.98	17.80	18.60	14:45	49.90	17.80	18.98
3:00	49.98	17.80	18.61	15:00	49.98	17.80	18.99
3:15	49.98	17.80	18.57	15:15	49.90	17.80	18.99
3:30	49.98	17.80	18.61	15:30	49.98	17.80	19.01
3:45	49.99	17.80	18.58	15:45	49.93	17.80	19.01
4:00	49.94	17.80	18.61	16:00	49.99	17.80	18.99
4:15	50.03	17.80	18.60	16:15	49.92	17.80	19.00
4:30	50.03	17.80	18.60	16:30	49.90	17.80	18.99
4:45	50.02	17.80	18.59	16:45	49.96	17.80	18.99
5:00	49.97	17.80	18.60	17:00	49.98	17.80	19.01
5:15	50.01	17.80	18.62	17:15	49.93	17.80	18.52
5:30	49.98	17.80	18.59	17:30	49.94	17.80	18.50
6:45	50.04	17.80	18.57	17:45	49.94	17.80	18.50
6:00	50.03	17.80	18.64	18:00	49.97	17.80	18.49
6:15	49.99	17.80	18.59	18:15	49.95	17.80	18.50
6:30	49.97	17.80	18.58	18:30	49.88	17.80	18.47
6:45	49.96	17.80	18.60	18:45	49.92	17.80	18.51
7:00	49.96	17.80	18.60	19:00	49.96	17.80	18.49
7:15	50.00	17.80	18.60	19:15	50.01	17.80	18.49
7:30	49.98	17.80	18.82	19:30	50.00	17.80	18.50
7:45	49.99	17.80	18.81	19:45	49.98	17.80	18.51
8:00	49.96	17.80	18.79	20:00	49.97	17.80	18.49
8:15	49.92	17.80	18.79	20:15	49.99	17.80	18.53
8:30	49.95	17.80	18.79	20:30	50.01	17.80	18.50
8:45	49.90	17.80	18.79	20:45	50.02	17.80	18.49
9:00	49.91	17.80	18.27	21:00	49.94	17.80	18.51
9:15	49.88	17.80	18.29	21:15	50.01	17.80	18.51
9:30	49.85	17.80	18.28	21:30	50.00	17.80	18.50
9:45	50.00	17.80	17.52	21:45	50.07	17.80	18.50
10:00	49.97	17.80	17.50	22:00	49.86	17.80	18.52
10:15	49.95	17.80	17.49	22:15	49.97	17.80	18.49
10:30	50.00	17.80	17.47	22:30	49.98	17.80	18.50
10:45	49.96	17.80	17.50	22:45	50.01	17.80	18.51
11:00	49.93	17.80	17.51	23:00	49.99	17.80	18.49
11:15	50.01	17.80	17.79	23:15	49.98	17.80	18.52
11:30	50.01	17.80	17.97	23:30	49.97	17.80	18.50
11:45	50.01	17.80	17.98	23:45	50.00	17.80	18.49

Yours faithfully,  
Tshering Deki



འབྲུག་རྒྱལ་ཁོག་མེ་ལམ་འཛིན།

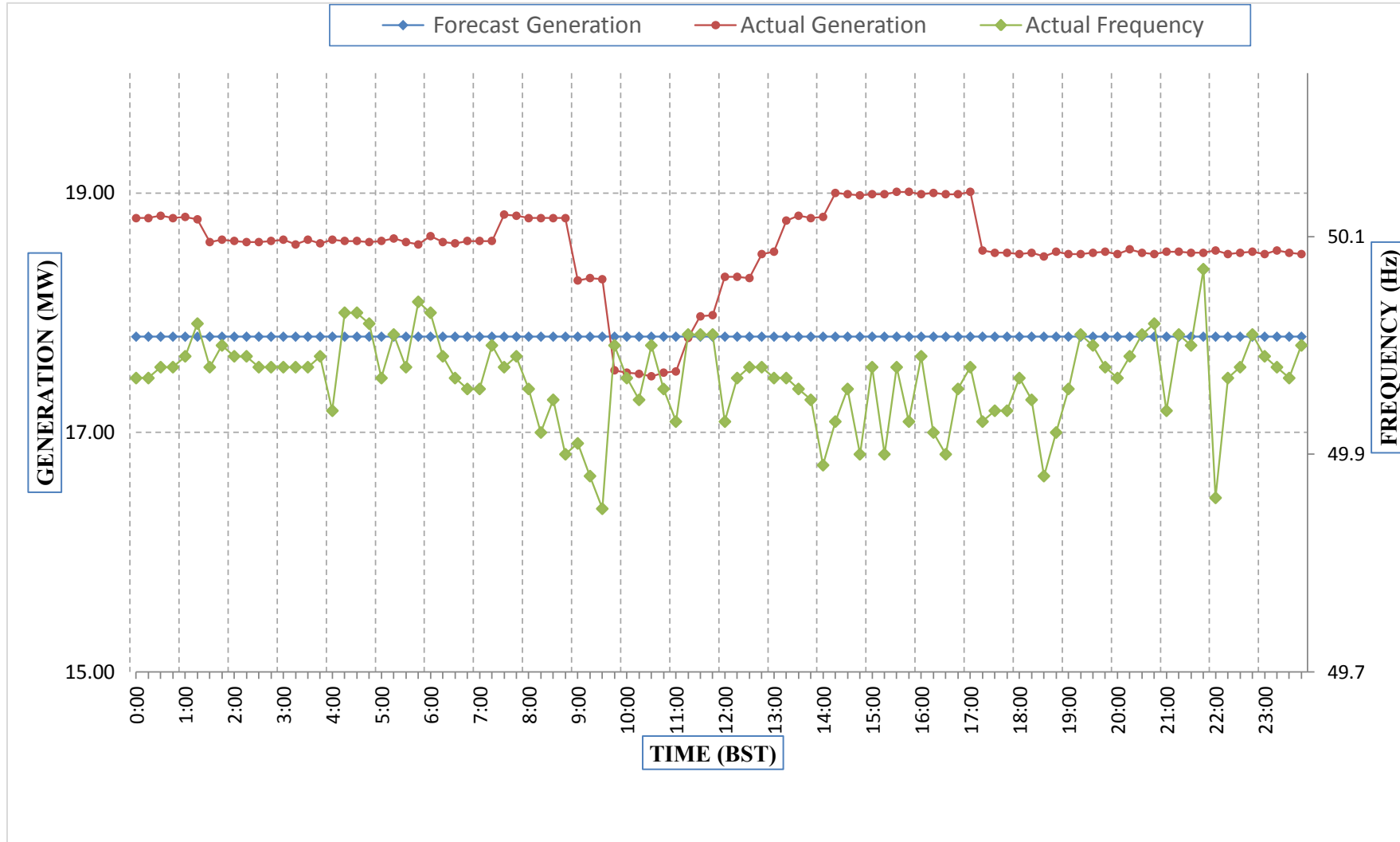
Bhutan Power Corporation Ltd.  
Bhutan Power System Operator  
Thimphu: Bhutan



Message No.: Enter your message number  
From: Shift In-charge, Control Room

Date: 10-Feb-18  
Time: 11:10

Forecast Generation & Actual Generation of Dagachhu(09-Feb-2018).



Yours faithfully,  
Tshering Deki