



འབྲུག་རྒྱུ་མེ་ལམ་འཛིན།

Bhutan Power Corporation Ltd.
 Bhutan Power System Operator
 Thimphu: Bhutan



Message No.: Enter your message number
 From: Shift In-charge, Control Room

Date: 9-Feb-18
 Time: 11:00

To
 Managing Director, BPC. Email: gemtshering@bpc.bt
 Director, O&MD, DGPC. Email: director.omb@drukgreen.com
 General Manager, TD, BPC. Email: ktobgye@bpc.bt
 General Manager, DCSD, BPC. Email: sandeeprai@bpc.bt

Sub: **Load Generation Balance Report of Yesterday (08-Feb-2018).**

Hours (BST)	Forecast		Actual		Hours (BST)	Forecast		Actual	
	Generation	Load	Generation	Load		Generation	Load	Generation	Load
0:00	275.30	265.70	295.41	265.00	12:00	275.30	285.10	290.65	283.27
0:15	275.30	260.30	295.50	267.87	12:15	275.30	284.10	289.66	287.03
0:30	275.30	247.70	295.78	257.55	12:30	275.30	281.10	289.78	288.55
0:45	275.30	246.20	296.07	265.25	12:45	275.30	276.70	289.27	279.54
1:00	275.30	233.50	294.70	260.17	13:00	275.30	275.10	289.13	260.88
1:15	275.30	225.50	294.60	257.11	13:15	275.30	274.70	289.23	262.62
1:30	268.10	218.10	295.59	264.95	13:30	275.30	273.40	289.97	265.61
1:45	262.30	212.30	295.56	259.65	13:45	275.30	270.20	289.88	271.86
2:00	265.90	215.90	294.60	267.13	14:00	275.30	270.80	290.38	275.86
2:15	262.50	212.50	295.54	266.46	14:15	275.30	271.80	290.81	280.99
2:30	269.10	219.10	294.89	265.45	14:30	275.30	272.00	290.45	280.60
2:45	274.10	224.10	294.50	261.41	14:45	275.30	269.30	290.09	278.98
3:00	275.30	232.40	295.30	263.05	15:00	275.30	264.00	291.88	278.88
3:15	275.30	244.00	294.59	263.63	15:15	275.30	265.70	290.62	276.13
3:30	275.30	254.50	295.70	262.56	15:30	275.30	273.50	289.71	281.15
3:45	275.30	261.10	295.38	257.73	15:45	275.30	272.00	290.79	279.36
4:00	275.30	262.90	294.99	259.90	16:00	275.30	271.50	289.33	272.02
4:15	275.30	265.20	295.87	252.20	16:15	275.30	276.80	291.21	286.77
4:30	275.30	263.90	294.28	256.45	16:30	275.30	279.30	290.73	285.41
4:45	275.30	272.50	296.38	259.80	16:45	275.30	287.00	291.33	292.61
5:00	275.30	276.80	296.11	258.35	17:00	275.30	294.10	290.31	289.84
5:15	275.30	285.60	292.06	265.56	17:15	287.80	301.30	290.58	296.64
5:30	275.30	285.50	292.91	262.63	17:30	287.80	308.00	303.21	302.41
5:45	275.30	289.50	293.43	267.28	17:45	287.80	314.60	303.24	312.38
6:00	275.30	282.10	292.80	262.02	18:00	287.80	325.10	303.11	328.98
6:15	287.80	282.70	304.41	271.52	18:15	287.80	332.40	303.48	340.18
6:30	287.80	291.00	304.10	279.46	18:30	287.80	338.90	304.41	347.14
6:45	287.80	302.00	304.65	296.12	18:45	287.80	340.50	303.66	346.48
7:00	287.80	307.70	304.66	305.67	19:00	287.80	339.30	303.45	342.40
7:15	287.80	317.50	304.87	314.03	19:15	287.80	337.60	303.27	341.04
7:30	287.80	330.00	304.24	320.42	19:30	287.80	333.80	303.64	339.20
7:45	287.80	326.80	303.59	306.57	19:45	287.80	329.90	303.98	333.83
8:00	287.80	325.80	302.72	317.82	20:00	287.80	325.10	304.10	311.29
8:15	287.80	316.60	302.72	312.52	20:15	287.80	322.90	305.16	319.38
8:30	287.80	284.00	302.77	292.71	20:30	287.80	320.20	304.69	324.94
8:45	287.80	249.40	303.16	308.60	20:45	287.80	321.30	304.78	314.80
9:00	287.80	322.70	303.27	309.54	21:00	287.80	320.00	305.02	314.36
9:15	275.30	302.00	290.05	293.83	21:15	287.80	314.60	305.12	320.44
9:30	275.30	296.60	289.70	293.59	21:30	287.80	312.70	291.31	309.05
9:45	275.30	298.00	290.52	296.39	21:45	287.80	305.70	291.21	313.66
10:00	275.30	296.90	289.94	296.75	22:00	275.30	301.80	291.07	307.66
10:15	275.30	294.90	289.48	293.83	22:15	275.30	299.00	291.66	301.31
10:30	275.30	294.50	289.91	292.93	22:30	275.30	299.20	291.67	295.16
10:45	275.30	291.10	289.48	292.63	22:45	275.30	295.40	291.65	284.54
11:00	275.30	292.70	289.70	284.48	23:00	275.30	288.10	291.56	281.52
11:15	275.30	288.30	289.31	283.97	23:15	275.30	280.80	291.56	275.27
11:30	275.30	288.30	291.30	295.01	23:30	275.30	282.30	293.36	276.23
11:45	275.30	287.20	289.91	289.64	23:45	275.30	279.20	291.85	272.84

Yours faithfully
 Karma Choden

Coincidental peak load of Day (Last year):	
302.85 MW	8-Feb-17
Maximum Load till date:	
362.09	14-Nov-17



འབྲུག་གྲོག་ཚེ་ལས་འཛིན།

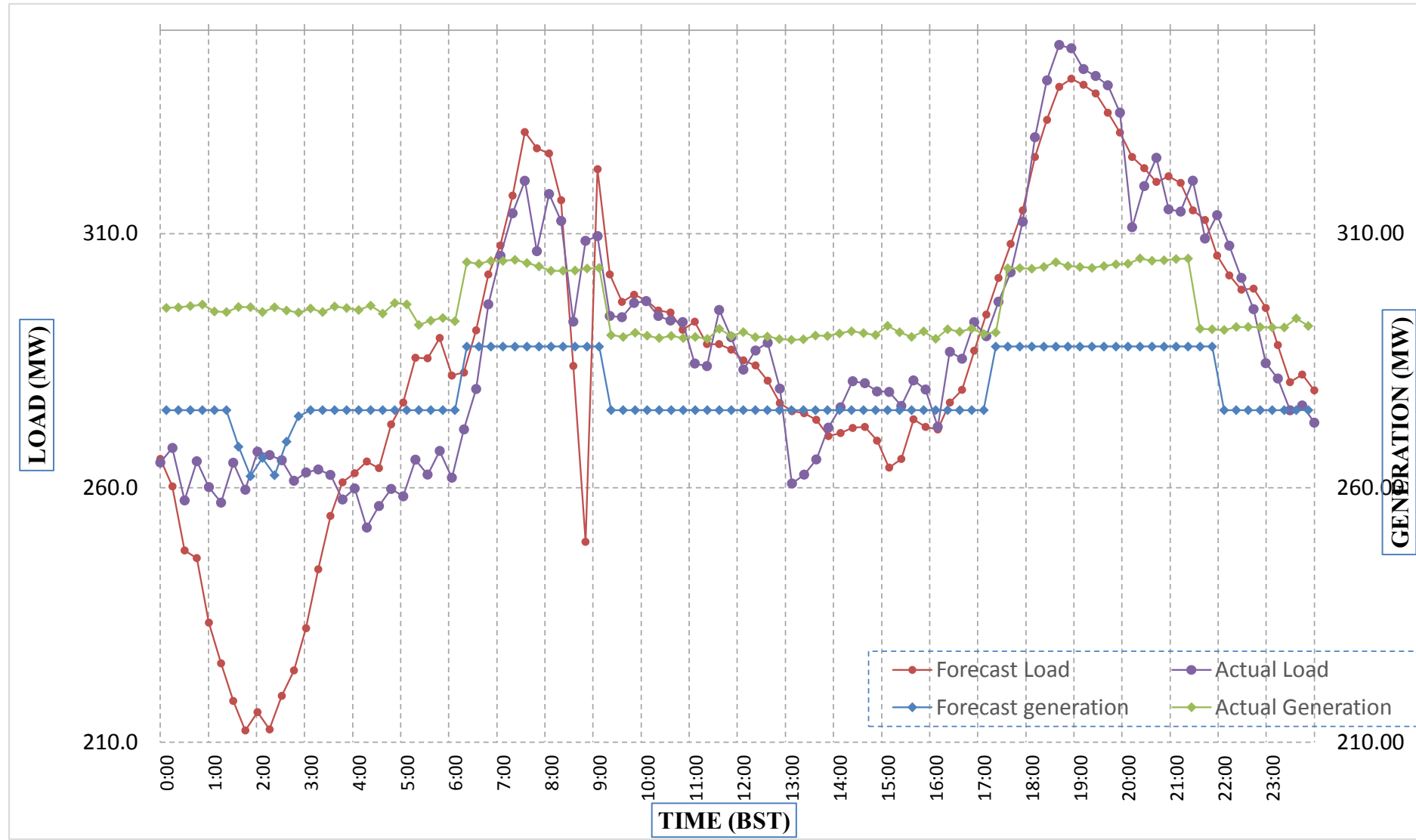
Bhutan Power Corporation Ltd.
Bhutan Power System Operator
Thimphu: Bhutan



Message No.: Enter your message number
From: Shift In-charge, Control Room

Date: 9-Feb-18
Time: 11:09

Forecast Generation & Load with Actual Generation & Load (08-Feb-2018).



Yours faithfully,
Karma Choden

	MW	Coincidental peak load of Day(Last year):	
Peak Co-incident Generation(08-Feb-2018).	305.16	302.85 MW	8-Feb-17
Peak Co-incident Load(08-Feb-2018).	347.14		
		Maximum Load till date:	
		362.09	14-Nov-17

Telephone: +975-02335631; Fax: +975-02335632; Email: bhutansystemoperator@bpc.bt; www.bpc.bt



འབྲུག་གྲོག་མེ་ལམ་འཛིན།

Bhutan Power Corporation Ltd.
Bhutan Power System Operator
Thimphu: Bhutan



Message No.: Enter your message number
From: Shift In-charge, Control Room

Date: 9-Feb-18
Time: 11:09

To
Managing Director, BPC. Email: gemtshering@bpc.bt
Director, O&MD, DGPC. Email: director.umd@drukgreen.com
General Manager, TD, BPC. Email: thinleygyeltshen@bpc.bt
General Manager, DCSD, BPC. Email: sandeeprai@bpc.bt

Sub: Load Generation Balance Report of Today (09-Feb-2018).

Hours (BST)	Forecast		Actual	
	Generation	Load	Generation	Load
0:00	289.50	270.80	290.72	275.01
0:15	289.50	266.40	291.23	262.73
0:30	288.90	258.90	290.84	262.47
0:45	289.50	264.10	291.76	266.10
1:00	289.50	259.60	291.37	258.09
1:15	288.30	258.30	290.31	264.56
1:30	272.90	242.90	291.89	258.87
1:45	271.70	223.60	290.49	250.96
2:00	271.70	225.70	291.39	236.68
2:15	271.70	220.50	290.59	222.89
2:30	271.70	214.60	289.93	228.20
2:45	271.70	214.30	288.19	235.34
3:00	271.70	212.90	289.26	244.90
3:15	271.70	218.30	288.26	247.39
3:30	271.70	221.70	288.78	245.93
3:45	271.70	225.70	288.81	252.59
4:00	271.70	227.60	289.28	254.55
4:15	271.70	235.00	288.62	254.40
4:30	271.70	240.20	289.27	257.95
4:45	279.70	249.70	287.88	236.75
5:00	289.50	260.10	288.45	250.89
5:15	289.50	267.80	286.31	255.42
5:30	289.50	271.10	286.88	260.03
5:45	290.50	272.50	285.96	270.47
6:00	299.90	269.90	285.61	271.89
6:15	303.50	276.90	297.79	279.51
6:30	303.50	285.90	298.19	287.85
6:45	303.50	303.10	297.37	299.55
7:00	303.50	311.80	297.39	315.24
7:15	303.50	317.30	296.83	305.16
7:30	303.50	325.80	297.74	319.08
7:45	303.50	312.00	297.00	317.55
8:00	303.50	284.40	296.77	314.38
8:15	293.80	263.80	296.91	314.86
8:30	283.00	248.70	296.82	296.31
8:45	303.00	273.00	296.97	311.22
9:00	289.50	314.90	296.30	299.72

Yours faithfully,
Karma Choden

Coincidental peak load of Day(Last year):	
295.47 MW	9-Feb-18

Maximum Load till date:	
362.09	14-Nov-17



འབྲུག་གྲོག་མེ་ལམ་འཛིན།

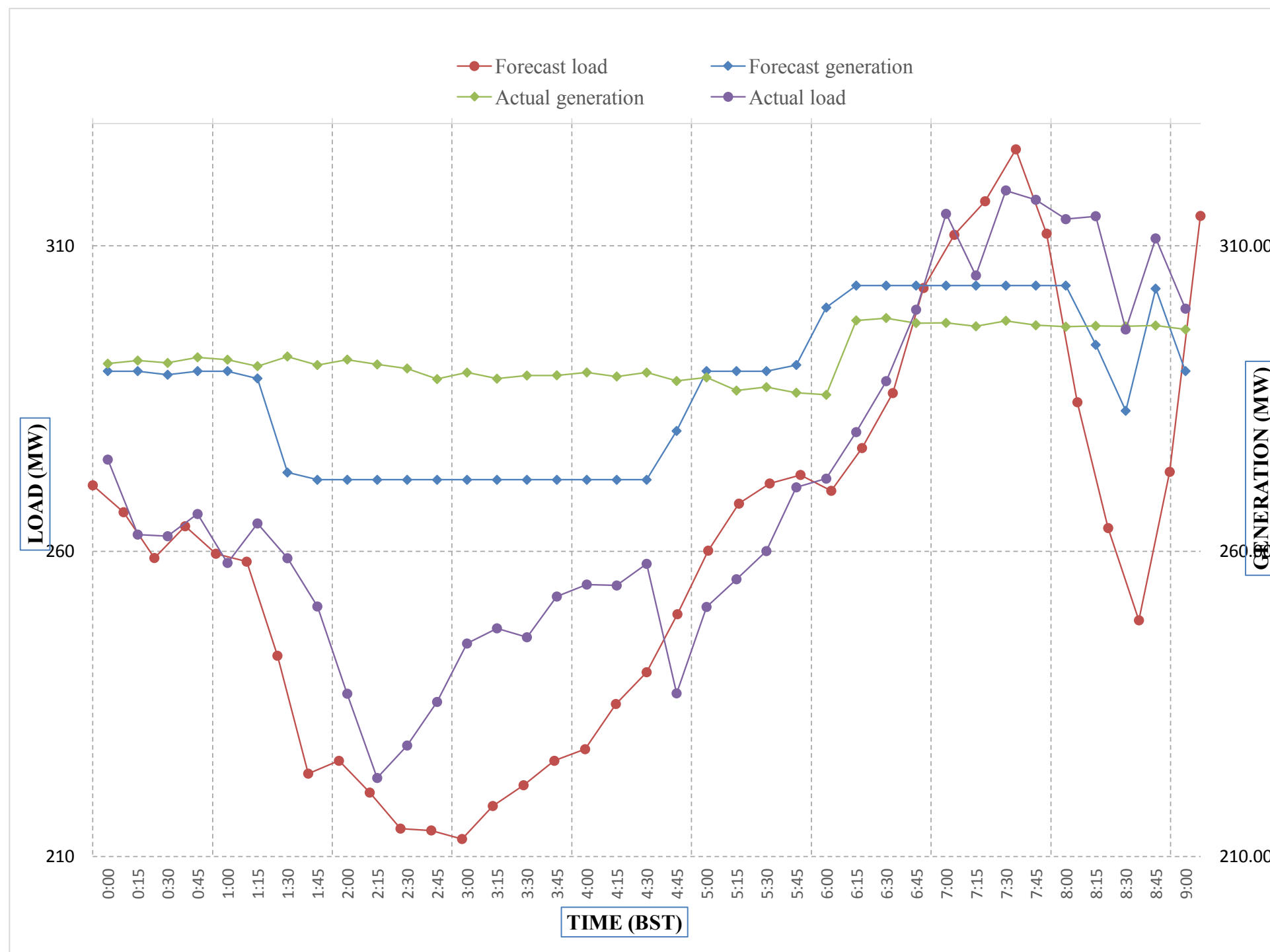
Bhutan Power Corporation Ltd.
Bhutan Power System Operator
Thimphu: Bhutan



Message No.: Enter your message number
From: Shift In-charge, Control Room

Date: 9-Feb-18
Time: 11:00

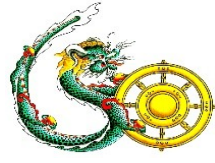
Forecast Generation & Load with Actual Generation & Load of Today from 00:00hrs to 09:00hrs(09-Feb-2018).



Yours faithfully
Karma Choden



ཕྱག་ལུགས་ལྷན་ཁག་ལཱ་ལེན་ལྷན་ཁག་།
Bhutan Power Corporation Ltd.
Bhutan Power System Operator
Thimphu: Bhutan



Message No.: Enter your message number **Date:** 9-Feb-18
From: Shift In-charge, Control Room **Time:** 11:00

To
 Managing Director, BPC. Email: gemtshering@bpc.bt
 Director, O&MD, DGPC. Email: director.omid@drukgreen.com
 General Manager, TD, BPC. Email: ktobgye@bpc.bt
 Advisor, BPC. Email: bharattamang@bpc.bt

Sub: **Load Generation Balance Report of Tomorrow (10-Feb-2018).**

Hours (BST)	Forecast		Hours (BST)	Forecast	
	Generation	Load		Generation	Load
0:00	281.50	270.20	12:00	233.40	289.90
0:15	281.50	267.10	12:15	233.40	289.80
0:30	281.50	259.00	12:30	233.40	288.10
0:45	281.50	265.10	12:45	233.40	277.10
1:00	281.50	260.30	13:00	233.40	278.50
1:15	243.60	257.90	13:15	233.40	274.40
1:30	243.60	258.10	13:30	233.40	276.50
1:45	243.60	253.50	13:45	233.40	273.80
2:00	243.60	249.70	14:00	233.40	278.00
2:15	243.60	241.50	14:15	233.40	281.60
2:30	243.60	234.20	14:30	233.40	282.20
2:45	243.60	222.20	14:45	233.40	281.10
3:00	243.60	219.50	15:00	233.40	280.40
3:15	243.60	218.40	15:15	233.40	279.10
3:30	243.60	218.60	15:30	233.40	282.10
3:45	243.60	217.00	15:45	233.40	284.50
4:00	243.60	209.70	16:00	233.40	281.50
4:15	243.60	213.80	16:15	233.40	287.30
4:30	243.60	214.00	16:30	233.40	288.30
4:45	243.60	218.40	16:45	233.40	294.80
5:00	243.60	218.50	17:00	233.40	297.10
5:15	243.60	225.30	17:15	246.00	302.30
5:30	243.60	233.20	17:30	246.00	309.70
6:45	243.60	233.40	17:45	246.00	318.90
6:00	243.60	239.30	18:00	246.00	330.60
6:15	256.20	253.10	18:15	266.50	339.70
6:30	256.20	285.70	18:30	266.50	346.50
6:45	256.20	303.40	18:45	266.50	345.30
7:00	256.20	315.80	19:00	266.50	345.60
7:15	268.10	324.10	19:15	266.50	343.50
7:30	268.10	331.70	19:30	266.50	337.10
7:45	268.10	306.70	19:45	266.50	335.00
8:00	268.10	282.00	20:00	266.50	325.10
8:15	268.10	257.40	20:15	266.50	326.60
8:30	268.10	248.70	20:30	266.50	324.90
8:45	268.10	281.70	20:45	266.50	321.70
9:00	268.10	313.40	21:00	266.50	322.30
9:15	255.40	300.00	21:15	253.90	318.00
9:30	255.40	300.00	21:30	253.90	311.30
9:45	255.40	297.50	21:45	253.90	304.40
10:00	255.40	298.50	22:00	253.90	304.10
10:15	255.40	297.20	22:15	245.20	298.10
10:30	255.40	295.10	22:30	245.20	295.80
10:45	255.40	293.20	22:45	245.20	290.00
11:00	255.40	292.30	23:00	245.20	283.00
11:15	233.40	291.10	23:15	231.00	280.40
11:30	233.40	292.90	23:30	231.00	279.70
11:45	233.40	292.40	23:45	231.00	278.00

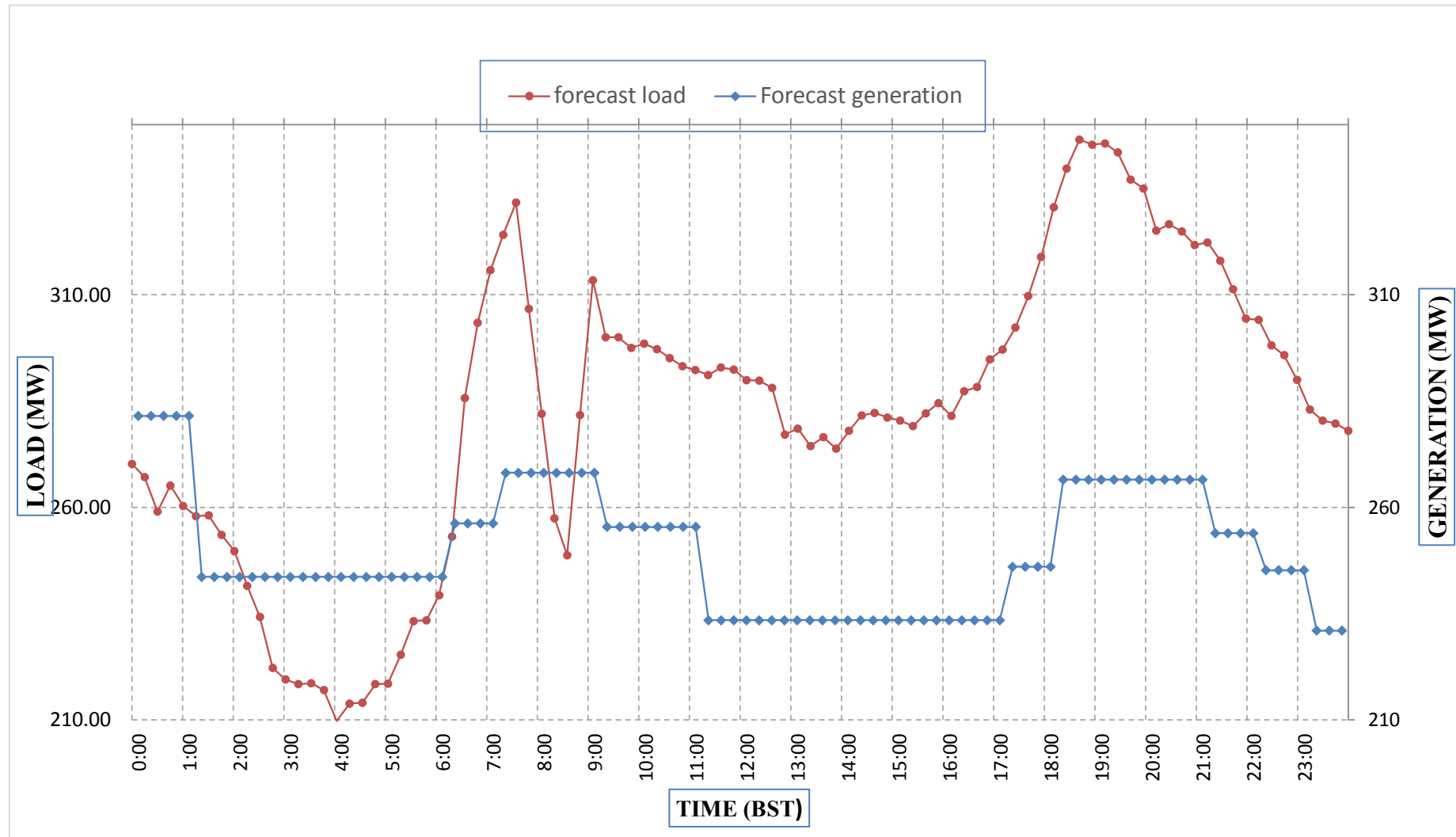
Yours faithfully,
 Karma Choden



Message No.: Enter your message number
 From: Shift In-charge, Control Room

Date: 9-Feb-18
 Time: 11:00

Forecast Generation & Load Forecast for Tomorrow (10-Feb-2018).



Yours faithfully,
 Karma Choden

	MW
Scheduled Peak Generation(10-Feb-2018).	281.50
Forecast Peak Load(10-Feb-2018).	346.50



འབྲུག་གྲོག་ཚེ་ལས་འདི་ན།

Bhutan Power Corporation Ltd.
Bhutan Power System Operator
Thimphu: Bhutan



Message No.: Enter your message number Date: 9-Feb-18
From: Shift In-charge, Control Room Time: 11:00

To
Managing Director, BPC. Email: gemtshering@bpc.bt
Director, O&MD, DGPC. Email: director.umd@drukgreen.com
General Manager, TD, BPC. Email: ktobgye@bpc.bt
Advisor, BPC. Email: bharattamang@bpc.bt

Sub: Forecast Generation and Actual Generation of Dagachhu (08-Feb-2018).

Hours (BST)	Actual Frequency	Forecast Generation	Actual Generation	Hours (BST)	Actual Frequency	Forecast Generation	Actual Generation
0:00	49.96	19.00	19.20	12:00	49.98	19.00	18.98
0:15	49.97	19.00	19.20	12:15	50.03	19.00	18.99
0:30	49.94	19.00	19.19	12:30	50.05	19.00	18.99
0:45	49.94	19.00	19.21	12:45	49.99	19.00	18.99
1:00	49.96	19.00	19.21	13:00	50.01	19.00	19.00
1:15	49.96	19.00	19.19	13:15	50.02	19.00	18.96
1:30	50.00	19.00	19.20	13:30	50.04	19.00	18.97
1:45	50.00	19.00	19.21	13:45	49.94	19.00	18.99
2:00	49.99	19.00	19.20	14:00	49.93	19.00	18.97
2:15	50.00	19.00	19.17	14:15	49.93	19.00	18.96
2:30	50.00	19.00	19.18	14:30	49.87	19.00	18.98
2:45	50.01	19.00	19.20	14:45	49.99	19.00	19.00
3:00	50.02	19.00	19.18	15:00	49.97	19.00	18.97
3:15	50.00	19.00	19.21	15:15	49.91	19.00	18.97
3:30	50.03	19.00	19.20	15:30	49.94	19.00	18.98
3:45	50.02	19.00	19.19	15:45	49.92	19.00	18.98
4:00	49.99	19.00	19.19	16:00	49.91	19.00	18.96
4:15	50.00	19.00	19.01	16:15	49.82	19.00	18.98
4:30	50.05	19.00	19.01	16:30	49.89	19.00	18.97
4:45	50.02	19.00	19.00	16:45	49.96	19.00	18.99
5:00	49.98	19.00	19.03	17:00	49.98	19.00	19.00
5:15	49.94	19.00	17.00	17:15	49.96	19.00	18.96
5:30	49.96	19.00	18.99	17:30	49.95	19.00	18.97
6:45	49.93	19.00	19.32	17:45	50.02	19.00	18.98
6:00	49.92	19.00	19.33	18:00	49.99	19.00	18.99
6:15	49.94	19.00	19.51	18:15	49.93	19.00	18.99
6:30	49.92	19.00	19.52	18:30	49.85	19.00	18.96
6:45	49.91	19.00	18.99	18:45	49.88	19.00	18.98
7:00	49.94	19.00	18.99	19:00	49.92	19.00	18.99
7:15	49.94	19.00	18.98	19:15	49.91	19.00	19.02
7:30	49.89	19.00	18.98	19:30	49.94	19.00	19.10
7:45	49.95	19.00	18.99	19:45	49.95	19.00	19.08
8:00	49.98	19.00	18.97	20:00	49.93	19.00	19.09
8:15	50.02	19.00	18.98	20:15	49.93	19.00	19.08
8:30	49.99	19.00	19.00	20:30	49.97	19.00	19.10
8:45	49.90	19.00	18.98	20:45	49.93	19.00	19.08
9:00	49.94	19.00	18.98	21:00	49.89	19.00	19.09
9:15	49.94	19.00	18.98	21:15	50.00	19.00	19.09
9:30	49.96	19.00	18.98	21:30	50.02	19.00	19.07
9:45	50.01	19.00	18.98	21:45	50.04	19.00	19.33
10:00	49.91	19.00	18.98	22:00	49.91	19.00	19.33
10:15	49.99	19.00	18.97	22:15	49.99	19.00	19.33
10:30	49.98	19.00	19.00	22:30	49.97	19.00	19.17
10:45	49.99	19.00	18.99	22:45	49.99	19.00	19.18
11:00	49.92	19.00	18.99	23:00	50.01	19.00	19.18
11:15	49.93	19.00	18.98	23:15	50.00	19.00	19.18
11:30	49.97	19.00	18.98	23:30	49.96	19.00	19.18
11:45	50.04	19.00	18.97	23:45	49.95	19.00	19.19

Yours faithfully,
Karma Choden



འབྲུག་རྒྱལ་ཁོག་གི་ལས་འདེན།

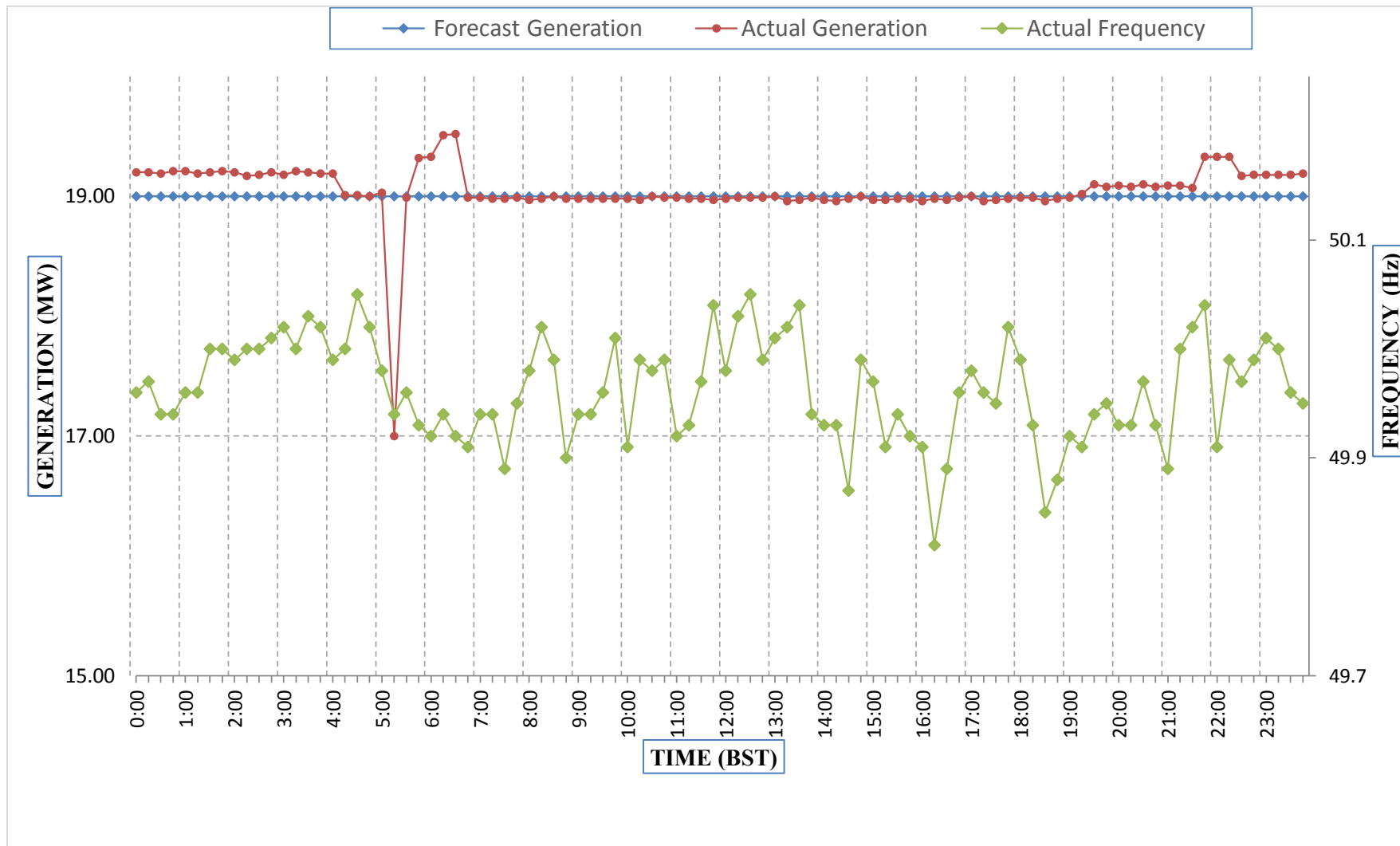
Bhutan Power Corporation Ltd.
Bhutan Power System Operator
Thimphu: Bhutan



Message No.: Enter your message number
From: Shift In-charge, Control Room

Date: 9-Feb-18
Time: 11:00

Forecast Generation & Actual Generation of Dagachhu(08-Feb-2018).



Yours faithfully,
Karma Choden