



འབྲུག་རྒྱུ་མེ་ལམ་འཛིན།

Bhutan Power Corporation Ltd.  
Bhutan Power System Operator  
Thimphu: Bhutan



Message No.: Enter your message number  
From: Shift In-charge, Control Room

Date: 8-Feb-18  
Time: 11:04

To  
Managing Director, BPC. Email: gemtshering@bpc.bt  
Director, O&MD, DGPC. Email: director.umd@drukgreen.com  
General Manager, TD, BPC. Email: ktobgye@bpc.bt  
General Manager, DCSD, BPC. Email: sandeeprai@bpc.bt

Sub: **Load Generation Balance Report of Yesterday (07-Feb-2018).**

Hours (BST)	Forecast		Actual		Hours (BST)	Forecast		Actual	
	Generation	Load	Generation	Load		Generation	Load	Generation	Load
0:00	284.20	265.70	278.09	267.34	12:00	284.20	303.87	268.17	299.83
0:15	284.20	260.30	278.74	265.20	12:15	284.20	297.25	267.91	297.08
0:30	284.20	247.70	278.38	244.93	12:30	284.20	295.77	269.27	
0:45	284.20	246.20	278.65	264.30	12:45	284.20	296.07	268.25	288.39
1:00	284.20	233.50	277.82	264.01	13:00	284.20	297.43	269.53	292.69
1:15	284.20	225.50	277.99	261.95	13:15	284.20	276.47	268.38	283.01
1:30	284.20	218.10	278.38	260.48	13:30	284.20	287.49	269.37	283.26
1:45	284.20	212.30	277.69	255.84	13:45	284.20	272.17	268.65	284.05
2:00	284.20	215.90	277.43	261.02	14:00	284.20	287.93	268.95	285.64
2:15	284.20	212.50	278.74	262.41	14:15	284.20	293.66	269.30	290.32
2:30	284.20	219.10	277.67	251.94	14:30	284.20	296.70	269.29	285.98
2:45	284.20	224.10	278.49	257.56	14:45	284.20	292.73	270.98	285.90
3:00	284.20	232.40	278.26	248.53	15:00	284.20	299.14	268.75	283.91
3:15	284.20	244.00	275.30	256.63	15:15	284.20	296.00	270.21	285.66
3:30	284.20	254.50	274.18	253.88	15:30	273.50	296.23	267.85	276.63
3:45	284.20	261.10	272.22	253.98	15:45	272.00	302.63	267.52	287.08
4:00	284.20	262.90	273.33	253.66	16:00	271.50	304.52	268.99	282.27
4:15	284.20	265.20	272.45	253.93	16:15	276.80	308.59	268.19	279.89
4:30	284.20	263.90	267.63	256.94	16:30	279.30	311.13	269.01	287.02
4:45	284.20	272.50	272.52	257.49	16:45	284.20	313.20	281.05	297.97
5:00	284.20	276.80	273.25	257.97	17:00	284.20	298.36	281.82	302.37
5:15	284.20	285.60	272.45	264.98	17:15	296.70	321.15	281.70	284.59
5:30	284.20	285.50	273.00	265.70	17:30	296.70	323.34	281.39	285.84
5:45	284.20	289.50	272.53	272.84	17:45	296.70	334.02	282.73	311.41
6:00	284.20	282.10	271.37	270.15	18:00	296.70	338.52	281.36	328.39
6:15	296.70	282.70	271.94	276.10	18:15	296.70	343.27	282.06	346.26
6:30	296.70	291.00	284.35	288.30	18:30	296.70	357.01	281.10	338.25
6:45	296.70	302.00	282.47	301.44	18:45	296.70	354.77	281.23	335.04
7:00	296.70	307.70	282.73	314.48	19:00	296.70	356.02	280.89	347.76
7:15	296.70	317.50	282.77	311.52	19:15	296.70	353.02	282.02	342.49
7:30	296.70	330.00	282.80	323.10	19:30	296.70	347.73	281.73	338.40
7:45	296.70	326.80	282.40	327.14	19:45	296.70	342.43	281.37	338.80
8:00	296.70	325.80	283.74	317.31	20:00	296.70	338.25	281.81	331.37
8:15	296.70	316.60	282.30	309.59	20:15	296.70	339.80	300.98	327.72
8:30	296.70	284.00	281.62	305.64	20:30	296.70	338.20	302.11	326.05
8:45	296.70	249.40	282.80	295.88	20:45	296.70	324.62	302.88	318.43
9:00	296.70	322.70	282.00	302.76	21:00	296.70	328.77	301.88	317.65
9:15	284.20	302.00	282.51	303.70	21:15	296.70	324.66	288.41	316.86
9:30	284.20	296.60	268.45	302.20	21:30	296.70	316.59	290.11	311.88
9:45	284.20	298.00	269.20	301.25	21:45	296.70	309.54	290.35	276.57
10:00	284.20	296.90	269.50	302.89	22:00	284.20	303.23	290.19	304.48
10:15	284.20	294.90	269.57	304.23	22:15	284.20	297.11	288.61	302.84
10:30	284.20	294.50	269.42	304.47	22:30	284.20	287.07	288.75	299.04
10:45	284.20	291.10	268.28	292.43	22:45	284.20	283.30	288.40	285.63
11:00	284.20	292.70	268.59	302.24	23:00	284.20	274.68	292.45	283.94
11:15	284.20	288.30	269.63	304.62	23:15	280.80	274.87	294.98	275.71
11:30	284.20	288.30	268.60	300.38	23:30	282.30	274.61	294.59	276.83
11:45	284.20	287.20	269.88	303.51	23:45	279.20	266.55	295.77	271.88

Yours faithfully  
Pema Lhamo

Coincidental peak load of Day(Last year):	
298.27	7-Feb-17
Maximum Load till date:	
362.09	14-Nov-17



འབྲུག་གྲོག་མེ་ལས་འཛིན།

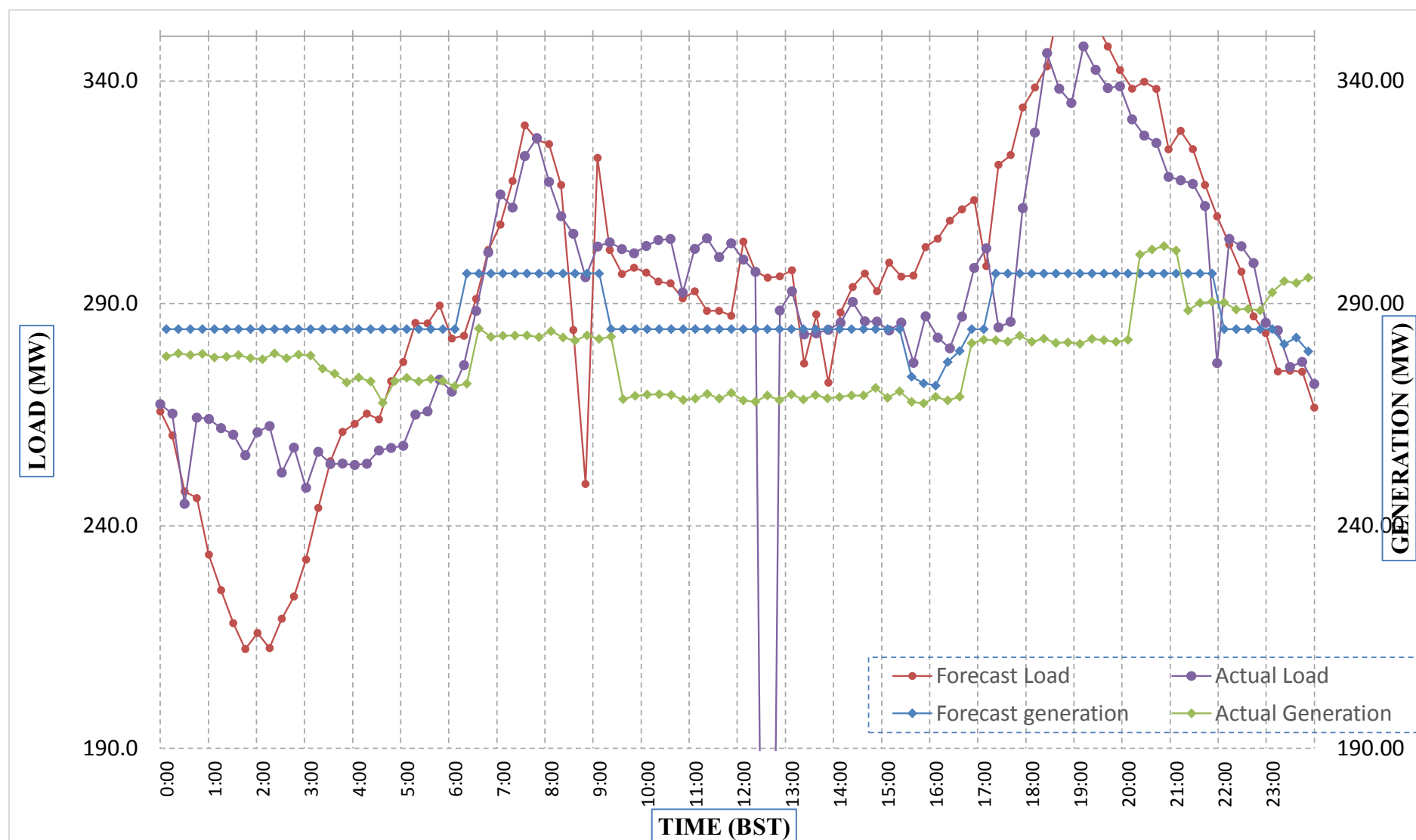
Bhutan Power Corporation Ltd.  
Bhutan Power System Operator  
Thimphu: Bhutan



Message No.: Enter your message number  
From: Shift In-charge, Control Room

Date: 8-Feb-18  
Time: 11:17

Forecast Generation & Load with Actual Generation & Load (07-Feb-2018).



Yours faithfully,  
Pema Lhamo

	MW	Coincidental peak load of Day(Last year):	
Peak Co-incident Generation(07-Feb-2018).	302.88	298.27	7-Feb-17
Peak Co-incident Load(07-Feb-2018).	347.76		
		Maximum Load till date:	
		362.09	14-Nov-17

Telephone: +975-02335631; Fax: +975-02335632; Email: bhutansystemoperator@bpc.bt; www.bpc.bt



འབྲུག་གྲོག་མེ་ལམ་འཛིན།

Bhutan Power Corporation Ltd.  
Bhutan Power System Operator  
Thimphu: Bhutan



Message No.: Enter your message number  
From: Shift In-charge, Control Room

Date: 8-Feb-18  
Time: 11:17

To

Managing Director, BPC. Email: gemtshering@bpc.bt  
Director, O&MD, DGPC. Email: director.umd@drukgreen.com  
General Manager, TD, BPC. Email: thinleygyeltshen@bpc.bt  
General Manager, DCSD, BPC. Email: sandeeprai@bpc.bt

Sub: Load Generation Balance Report of Today (08-Feb-2018).

Hours (BST)	Forecast		Actual	
	Generation	Load	Generation	Load
0:00	275.30	265.70	295.41	265.00
0:15	275.30	260.30	295.50	267.87
0:30	275.30	247.70	295.78	257.55
0:45	275.30	246.20	296.07	265.25
1:00	275.30	233.50	294.70	260.17
1:15	275.30	225.50	294.60	257.11
1:30	268.10	218.10	295.59	264.95
1:45	262.30	212.30	295.56	259.65
2:00	265.90	215.90	294.60	267.13
2:15	262.50	212.50	295.54	266.46
2:30	269.10	219.10	294.89	265.45
2:45	274.10	224.10	294.50	261.41
3:00	275.30	232.40	295.30	263.05
3:15	275.30	244.00	294.59	263.63
3:30	275.30	254.50	295.70	262.56
3:45	275.30	261.10	295.38	257.73
4:00	275.30	262.90	294.99	259.90
4:15	275.30	265.20	295.87	252.20
4:30	275.30	263.90	294.28	256.45
4:45	275.30	272.50	296.38	259.80
5:00	275.30	276.80	296.11	258.35
5:15	275.30	285.60	292.06	265.56
5:30	275.30	285.50	292.91	262.63
5:45	275.30	289.50	293.43	267.28
6:00	275.30	282.10	292.80	262.02
6:15	287.80	282.70	304.41	271.52
6:30	287.80	291.00	304.10	279.46
6:45	287.80	302.00	304.65	296.12
7:00	287.80	307.70	304.66	305.67
7:15	287.80	317.50	304.87	314.03
7:30	287.80	330.00	304.24	320.42
7:45	287.80	326.80	303.59	306.57
8:00	287.80	325.80	302.72	317.82
8:15	287.80	316.60	302.72	312.52
8:30	287.80	284.00	302.77	292.71
8:45	287.80	249.40	303.16	308.60
9:00	287.80	322.70	303.27	309.54

Yours faithfully,  
Pema Lhamo

Coincidental peak load of Day(Last year):	
302.85	8-Feb-18

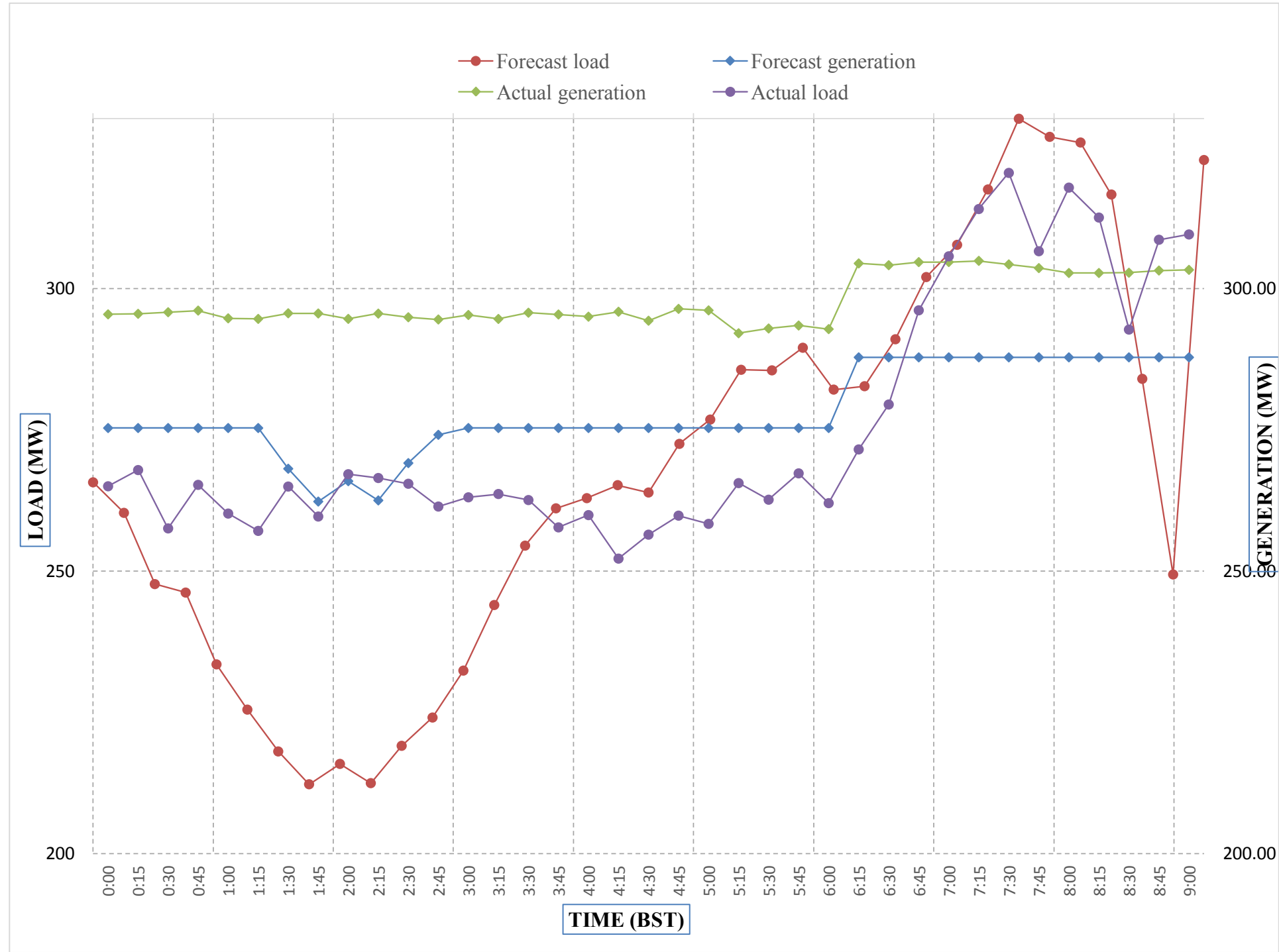
Maximum Load till date:	
362.09	14-Nov-17



Message No.: Enter your message number  
 From: Shift In-charge, Control Room

Date: 8-Feb-18  
 Time: 11:04

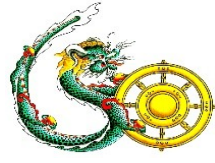
Forecast Generation & Load with Actual Generation & Load of Today from 00:00hrs to 09:00hrs(08-Feb-2018).



Yours faithfully  
 Pema Lhamo



ཕྱག་ལུགས་ལྷན་ཁག་ལཱ་ལེན་ལྷན་ཁག་།  
**Bhutan Power Corporation Ltd.**  
**Bhutan Power System Operator**  
 Thimphu: Bhutan



**Message No.:** Enter your message number **Date:** 8-Feb-18  
**From:** Shift In-charge, Control Room **Time:** 11:04

**To**  
 Managing Director, BPC. Email: gemtshering@bpc.bt  
 Director, O&MD, DGPC. Email: director.omid@drukgreen.com  
 General Manager, TD, BPC. Email: ktobgye@bpc.bt  
 Advisor, BPC. Email: bharattamang@bpc.bt

**Sub:** Load Generation Balance Report of Tomorrow (09-Feb-2018).

Hours (BST)	Forecast		Hours (BST)	Forecast	
	Generation	Load		Generation	Load
0:00	289.50	270.80	12:00	289.50	292.10
0:15	289.50	266.40	12:15	289.50	291.40
0:30	288.90	258.90	12:30	289.50	288.90
0:45	289.50	264.10	12:45	289.50	282.50
1:00	289.50	259.60	13:00	289.50	284.30
1:15	288.30	258.30	13:15	289.50	278.70
1:30	272.90	242.90	13:30	289.50	279.40
1:45	271.70	223.60	13:45	289.50	274.20
2:00	271.70	225.70	14:00	289.50	278.40
2:15	271.70	220.50	14:15	289.50	281.40
2:30	271.70	214.60	14:30	289.50	281.70
2:45	271.70	214.30	14:45	289.50	280.00
3:00	271.70	212.90	15:00	289.50	277.60
3:15	271.70	218.30	15:15	289.50	277.70
3:30	271.70	221.70	15:30	289.50	280.30
3:45	271.70	225.70	15:45	289.50	284.30
4:00	271.70	227.60	16:00	289.50	281.70
4:15	271.70	235.00	16:15	289.50	286.60
4:30	271.70	240.20	16:30	289.50	286.90
4:45	279.70	249.70	16:45	289.50	296.40
5:00	289.50	260.10	17:00	303.50	296.00
5:15	289.50	267.80	17:15	303.50	303.20
5:30	289.50	271.10	17:30	303.50	309.80
6:45	290.50	272.50	17:45	303.50	319.30
6:00	299.90	269.90	18:00	303.50	330.50
6:15	303.50	276.90	18:15	303.50	337.80
6:30	303.50	285.90	18:30	303.50	344.20
6:45	303.50	303.10	18:45	303.50	343.90
7:00	303.50	311.80	19:00	303.50	345.20
7:15	303.50	317.30	19:15	303.50	342.40
7:30	303.50	325.80	19:30	303.50	334.80
7:45	303.50	312.00	19:45	303.50	334.70
8:00	303.50	284.40	20:00	303.50	329.20
8:15	293.80	263.80	20:15	303.50	328.00
8:30	283.00	248.70	20:30	303.50	324.70
8:45	303.00	273.00	20:45	303.50	321.40
9:00	289.50	314.90	21:00	303.50	322.60
9:15	289.50	302.90	21:15	303.50	317.90
9:30	289.50	301.70	21:30	303.50	313.10
9:45	289.50	298.60	21:45	303.50	300.40
10:00	289.50	299.40	22:00	303.50	302.30
10:15	289.50	299.10	22:15	303.50	297.90
10:30	289.50	295.90	22:30	303.50	295.20
10:45	289.50	292.80	22:45	303.50	291.10
11:00	289.50	295.00	23:00	303.50	284.40
11:15	289.50	293.40	23:15	303.50	278.50
11:30	289.50	293.50	23:30	303.50	277.80
11:45	289.50	294.40	23:45	303.50	277.00

Yours faithfully,  
 Pema Lhamo

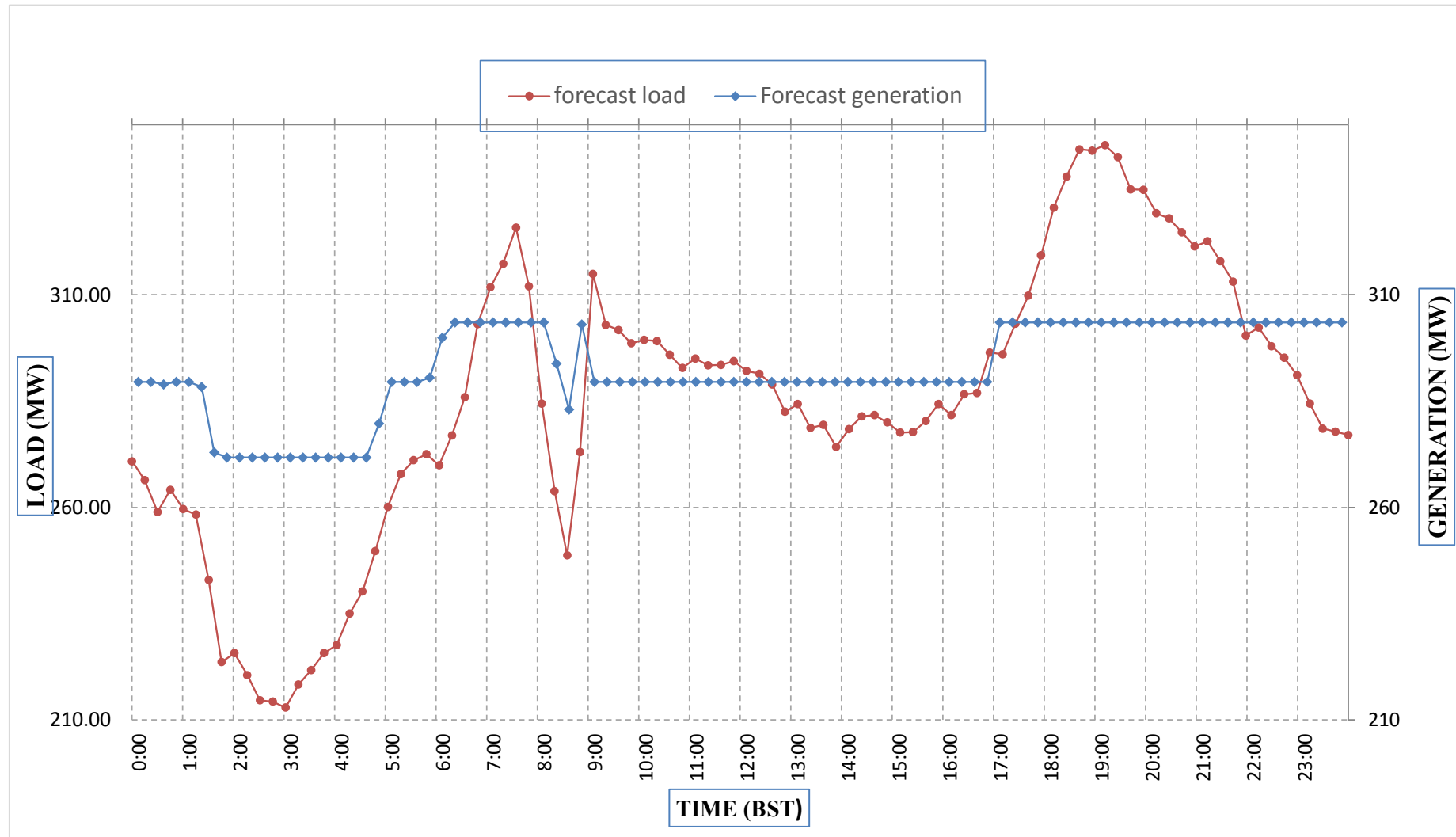




Message No.: Enter your message number  
 From: Shift In-charge, Control Room

Date: 8-Feb-18  
 Time: 11:04

Forecast Generation & Load Forecast for Tomorrow (09-Feb-2018).



Yours faithfully,  
 Pema Lhamo

	MW
Scheduled Peak Generation(09-Feb-2018).	303.50
Forecast Peak Load(09-Feb-2018).	345.20



ཕུག་ལྷན་ཁག་གི་འཕེལ་རྒྱུ་ལྟེང་།



Bhutan Power Corporation Ltd.  
Bhutan Power System Operator  
Thimphu: Bhutan

Message No.: Enter your message number Date: 8-Feb-18  
From: Shift In-charge, Control Room Time: 11:04

To  
Managing Director, BPC. Email: gemtshering@bpc.bt  
Director, O&MD, DGPC. Email: director.umd@drukgreen.com  
General Manager, TD, BPC. Email: ktobgye@bpc.bt  
Advisor, BPC. Email: bharattamang@bpc.bt

Sub: Forecast Generation and Actual Generation of Dagachhu (07-Feb-2018).

Hours (BST)	Actual Frequency	Forecast Generation	Actual Generation	Hours (BST)	Actual Frequency	Forecast Generation	Actual Generation
0:00	49.97	19.00	19.31	12:00	49.97	19.00	19.31
0:15	50.02	19.00	19.33	12:15	49.88	19.00	19.31
0:30	49.98	19.00	19.31	12:30	49.99	19.00	19.34
0:45	49.98	19.00	19.32	12:45	49.98	19.00	19.33
1:00	49.99	19.00	19.31	13:00	50.04	19.00	19.31
1:15	50.01	19.00	19.33	13:15	50.08	19.00	19.33
1:30	49.97	19.00	19.31	13:30	50.06	19.00	19.33
1:45	50.00	19.00	19.32	13:45	50.00	19.00	19.33
2:00	49.99	19.00	19.30	14:00	49.98	19.00	19.31
2:15	49.99	19.00	19.30	14:15	49.94	19.00	19.32
2:30	49.98	19.00	19.32	14:30	49.84	19.00	19.33
2:45	50.01	19.00	19.33	14:45	49.91	19.00	19.33
3:00	49.99	19.00	19.31	15:00	49.97	19.00	19.30
3:15	49.99	19.00	19.32	15:15	50.02	19.00	19.29
3:30	50.00	19.00	19.31	15:30	50.04	19.00	19.32
3:45	50.05	19.00	19.31	15:45	49.99	19.00	19.33
4:00	49.98	19.00	18.99	16:00	49.97	19.00	19.30
4:15	50.00	19.00	18.99	16:15	49.89	19.00	19.32
4:30	50.02	19.00	14.02	16:30	49.92	19.00	19.31
4:45	50.00	19.00	18.98	16:45	49.95	19.00	19.32
5:00	49.96	19.00	18.98	17:00	49.91	19.00	19.31
5:15	49.97	19.00	18.98	17:15	49.97	19.00	19.31
5:30	49.97	19.00	18.96	17:30	49.89	19.00	19.31
6:45	49.98	19.00	18.98	17:45	49.87	19.00	19.33
6:00	49.99	19.00	18.97	18:00	50.03	19.00	19.33
6:15	49.97	19.00	18.98	18:15	50.01	19.00	19.34
6:30	49.92	19.00	18.98	18:30	49.95	19.00	19.02
6:45	49.93	19.00	18.98	18:45	49.90	19.00	18.99
7:00	49.93	19.00	18.98	19:00	49.91	19.00	19.00
7:15	49.84	19.00	18.97	19:15	49.93	19.00	19.00
7:30	49.87	19.00	19.18	19:30	49.94	19.00	18.98
7:45	49.92	19.00	19.19	19:45	49.97	19.00	19.00
8:00	49.86	19.00	19.18	20:00	49.99	19.00	18.99
8:15	49.91	19.00	19.33	20:15	50.00	19.00	18.98
8:30	49.88	19.00	19.32	20:30	49.99	19.00	19.17
8:45	49.85	19.00	19.30	20:45	49.97	19.00	19.18
9:00	49.88	19.00	19.30	21:00	49.97	19.00	19.19
9:15	49.96	19.00	19.33	21:15	49.95	19.00	19.19
9:30	49.93	19.00	19.32	21:30	49.96	19.00	19.18
9:45	50.00	19.00	19.33	21:45	49.98	19.00	19.19
10:00	49.89	19.00	19.32	22:00	50.03	19.00	19.19
10:15	49.99	19.00	19.33	22:15	49.90	19.00	19.18
10:30	49.99	19.00	19.31	22:30	49.93	19.00	19.19
10:45	50.03	19.00	19.32	22:45	49.98	19.00	19.20
11:00	50.00	19.00	19.29	23:00	49.98	19.00	19.18
11:15	49.96	19.00	19.33	23:15	49.96	19.00	19.20
11:30	49.94	19.00	19.33	23:30	49.96	19.00	19.19
11:45	50.01	19.00	19.30	23:45	49.99	19.00	19.20

49.99

Yours faithfully,  
Pema Lhamo



འབྲུག་རྒྱལ་ཁོག་མེ་ལམ་འཛིན།

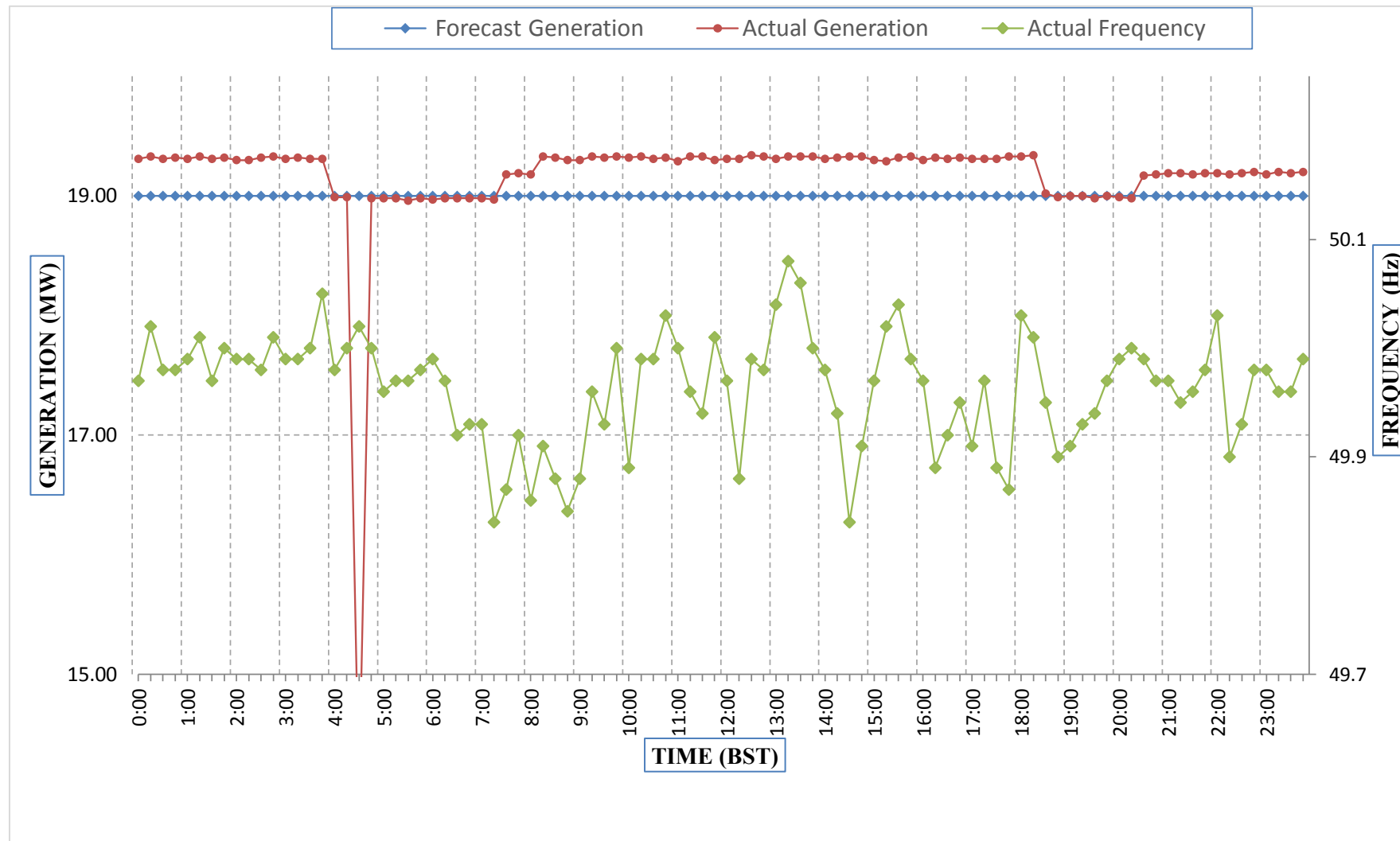
Bhutan Power Corporation Ltd.  
Bhutan Power System Operator  
Thimphu: Bhutan



Message No.: Enter your message number  
From: Shift In-charge, Control Room

Date: 8-Feb-18  
Time: 11:04

Forecast Generation & Actual Generation of Dagachhu(07-Feb-2018).



Yours faithfully,  
Pema Lhamo