



འབྲུག་གློག་ལེ་ལས་འཛིན།

Bhutan Power Corporation Ltd.
Bhutan Power System Operator
Thimphu: Bhutan



Message No.: Enter your message number
From: Shift In-charge, Control Room

Date: 6-Feb-18
Time: 8:49

To
Managing Director, BPC. Email: gemtshering@bpc.bt
Director, O&MD, DGPC. Email: director.omid@drukgreen.com
General Manager, TD, BPC. Email: ktobgye@bpc.bt
General Manager, DCSD, BPC. Email: sandeeprai@bpc.bt

Sub: Load Generation Balance Report of Yesterday (05-Feb-2018).

Hours (BST)	Forecast		Actual		Hours (BST)	Forecast		Actual	
	Generation	Load	Generation	Load		Generation	Load	Generation	Load
0:00	281.60	271.60	281.95	280.02	12:00	296.50	281.50	290.93	294.96
0:15	278.90	268.90	280.64	280.20	12:15	295.30	280.30	290.34	290.43
0:30	271.70	261.70	281.90	280.12	12:30	293.90	278.90	292.48	288.29
0:45	276.10	256.10	281.64	277.13	12:45	290.50	275.50	290.61	281.70
1:00	269.40	249.40	280.36	275.10	13:00	288.30	273.30	290.05	275.84
1:15	267.60	247.60	290.32	277.09	13:15	287.30	272.30	290.58	282.17
1:30	262.50	242.50	289.07	272.25	13:30	287.10	272.10	291.03	270.24
1:45	248.30	228.30	291.39	273.07	13:45	283.10	268.10	290.90	268.84
2:00	236.90	216.90	289.46	270.84	14:00	282.20	267.20	291.01	269.12
2:15	233.50	213.50	290.69	267.48	14:15	284.10	269.10	290.08	272.77
2:30	224.90	204.90	290.50	271.92	14:30	287.50	272.50	290.40	271.20
2:45	216.10	196.10	290.48	266.55	14:45	287.00	272.00	290.42	257.12
3:00	214.70	194.70	289.30	273.15	15:00	289.40	274.40	289.74	228.80
3:15	223.90	203.90	290.52	271.84	15:15	293.40	278.40	288.68	236.05
3:30	235.90	215.90	290.35	271.20	15:30	296.50	281.50	289.19	254.47
3:45	241.50	231.50	289.63	267.26	15:45	291.00	276.00	289.61	260.74
4:00	258.60	248.60	289.91	267.84	16:00	294.00	279.00	289.81	257.05
4:15	265.70	255.70	290.91	266.91	16:15	298.00	283.00	290.86	268.80
4:30	263.30	253.30	289.54	272.24	16:30	305.00	290.00	290.99	268.79
4:45	272.40	262.40	291.59	266.75	16:45	306.50	291.50	289.47	279.19
5:00	277.10	267.10	289.35	269.92	17:00	311.70	296.70	290.74	279.26
5:15	286.60	276.60	290.20	273.93	17:15	317.40	302.40	290.47	289.07
5:30	285.70	275.70	290.02	279.61	17:30	324.90	309.90	304.07	301.76
5:45	293.80	283.80	289.57	278.70	17:45	332.20	317.20	304.66	307.55
6:00	295.30	285.30	290.77	284.38	18:00	329.20	329.20	302.67	315.15
6:15	300.80	290.80	289.62	281.78	18:15	336.30	336.30	303.83	327.84
6:30	309.60	299.60	289.18	291.24	18:30	342.20	342.20	303.05	326.40
6:45	321.90	311.90	291.42	301.02	18:45	343.20	341.10	304.21	329.26
7:00	339.00	321.20	290.48	316.91	19:00	343.20	340.80	303.63	329.77
7:15	339.00	328.40	289.26	326.41	19:15	343.20	336.70	303.48	330.40
7:30	344.40	344.40	290.01	329.40	19:30	343.20	333.30	304.23	330.31
7:45	339.00	335.70	292.35	329.92	19:45	343.20	329.60	304.15	322.82
8:00	332.10	317.10	290.51	332.18	20:00	338.70	323.70	303.52	324.39
8:15	303.00	288.00	289.36	329.67	20:15	336.20	321.20	302.32	319.41
8:30	267.40	252.40	289.92	304.01	20:30	333.90	318.90	303.90	311.27
8:45	256.30	236.30	301.34	314.41	20:45	334.70	319.70	303.98	314.69
9:00	336.40	321.40	303.61	315.23	21:00	331.00	316.00	303.14	318.55
9:15	316.80	301.80	303.09	314.91	21:15	327.20	312.20	290.21	310.94
9:30	310.00	295.00	290.73	307.33	21:30	323.70	308.70	290.86	305.52
9:45	309.70	294.70	289.91	311.27	21:45	317.20	302.20	291.20	298.70
10:00	310.60	295.60	290.54	311.27	22:00	315.20	300.20	290.49	290.20
10:15	309.10	294.10	291.71	305.39	22:15	314.50	299.50	290.05	286.79
10:30	307.50	292.50	290.38	307.10	22:30	319.10	304.10	289.90	286.34
10:45	306.40	291.40	292.05	299.84	22:45	314.20	299.20	289.89	281.02
11:00	305.40	290.40	291.36	308.35	23:00	311.30	296.30	289.67	271.70
11:15	298.90	283.90	291.30	308.95	23:15	299.40	284.40	291.15	269.13
11:30	298.40	283.40	291.84	294.88	23:30	298.50	283.50	289.76	267.43
11:45	295.40	280.40	290.21	301.80	23:45	294.60	279.60	290.55	267.65

Yours faithfully
Karma Yangden

Coincidental peak load of Day(Last year):	
290.36	5-Feb-17
Maximum Load till date:	
362.09	14-Nov-17



འབྲུག་གྲོག་མེ་ལས་འཛིན།

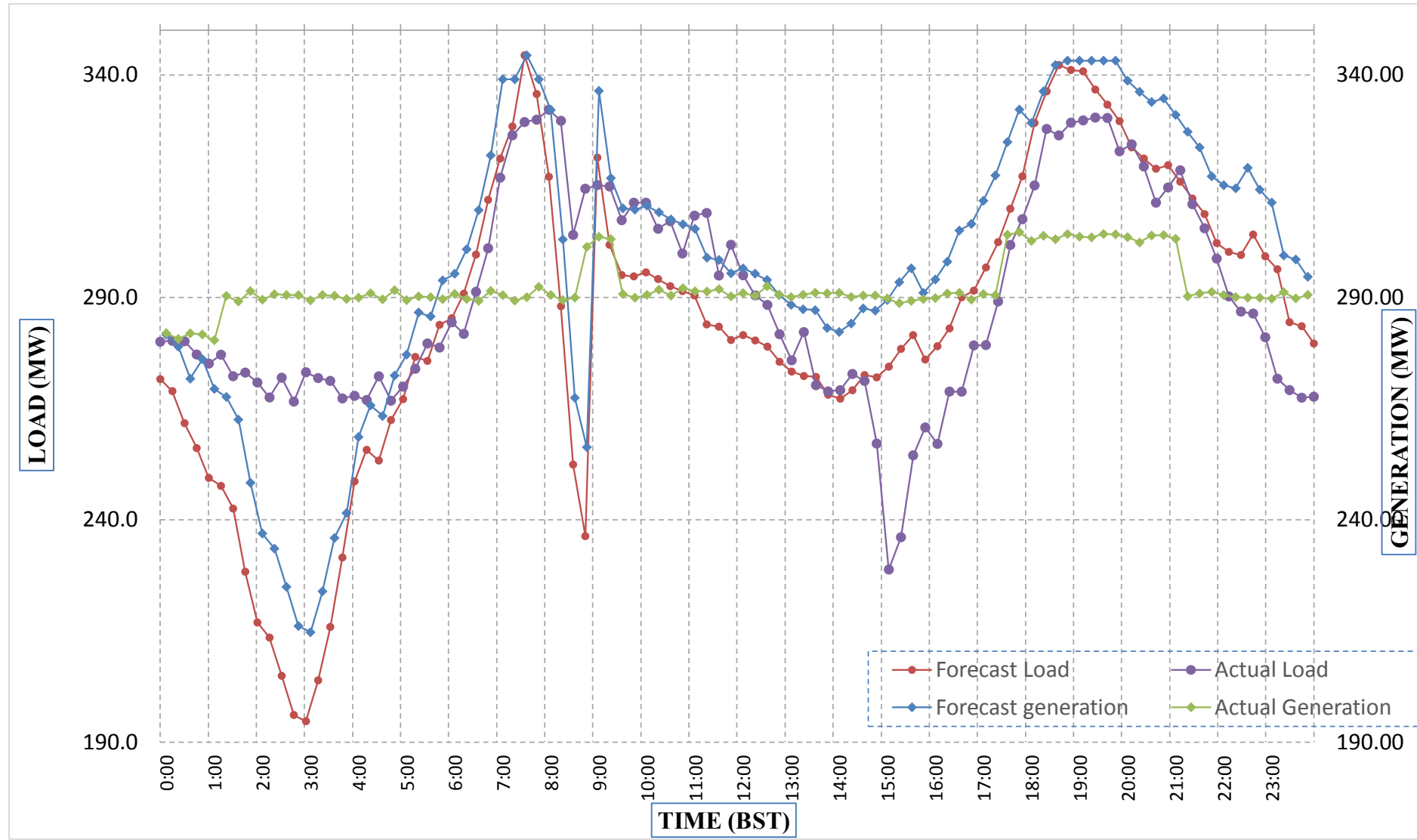
Bhutan Power Corporation Ltd.
Bhutan Power System Operator
Thimphu: Bhutan



Message No.: Enter your message number
From: Shift In-charge, Control Room

Date: 6-Feb-18
Time: 10:31

Forecast Generation & Load with Actual Generation & Load (05-Feb-2018).



Yours faithfully,
Karma Yangden

	MW	Coincidental peak load of Day(Last year):	
Peak Co-incident Generation(05-Feb-2018).	304.66	290.36	5-Feb-17
Peak Co-incident Load(05-Feb-2018).	332.18		
		Maximum Load till date:	
		362.09	14-Nov-17

Telephone: +975-02335631; Fax: +975-02335632; Email: bhutansystemoperator@bpc.bt; www.bpc.bt



འབྲུག་གློག་ལེ་ལམ་འཛིན།

Bhutan Power Corporation Ltd.
Bhutan Power System Operator
Thimphu: Bhutan



Message No.: Enter your message number
From: Shift In-charge, Control Room

Date: 6-Feb-18
Time: 10:31

To

Managing Director, BPC. Email: gemtshering@bpc.bt
Director, O&MD, DGPC. Email: director.umd@drukgreen.com
General Manager, TD, BPC. Email: thinleygyeltshen@bpc.bt
General Manager, DCSD, BPC. Email: sandeeprai@bpc.bt

Sub: Load Generation Balance Report of Today (06-Feb-2018).

Hours (BST)	Forecast		Actual	
	Generation	Load	Generation	Load
0:00	284.80	260.70	291.19	267.24
0:15	284.80	252.10	291.57	265.56
0:30	284.80	238.90	290.29	261.03
0:45	284.80	234.30	291.24	260.29
1:00	284.80	219.00	290.11	254.00
1:15	284.80	211.00	291.13	253.67
1:30	284.80	203.70	291.05	259.83
1:45	284.80	200.30	291.51	248.56
2:00	284.80	202.90	290.73	255.27
2:15	284.80	203.10	291.02	259.89
2:30	284.80	206.90	289.51	262.34
2:45	284.80	207.70	290.38	263.06
3:00	284.80	216.40	291.41	261.95
3:15	284.80	230.90	290.05	255.64
3:30	284.80	248.90	291.56	261.52
3:45	284.80	258.10	290.40	260.70
4:00	284.80	261.60	293.15	255.58
4:15	284.80	262.50	291.83	259.13
4:30	284.80	258.30	290.63	260.24
4:45	284.80	264.20	290.48	263.13
5:00	284.80	263.50	290.62	247.80
5:15	284.80	271.30	291.75	262.95
5:30	284.80	269.30	291.22	262.48
5:45	284.80	274.10	290.70	272.32
6:00	284.80	273.90	290.16	262.16
6:15	297.20	280.00	291.50	273.10
6:30	297.20	288.40	303.77	284.88
6:45	297.20	301.00	303.63	299.46
7:00	297.20	304.30	304.38	313.92
7:15	297.20	314.60	302.88	323.16
7:30	297.20	329.30	303.92	320.41
7:45	297.20	321.40	303.80	326.20
8:00	297.20	315.40	303.84	322.18
8:15	297.20	301.60	303.05	321.27
8:30	297.20	282.80	303.73	312.05
8:45	297.20	234.30	303.87	304.85
9:00	297.20	323.60	304.31	307.44

Yours faithfully,
Karma Yangden

Coincidental peak load of Day(Last year):	
310.97	6-Feb-18

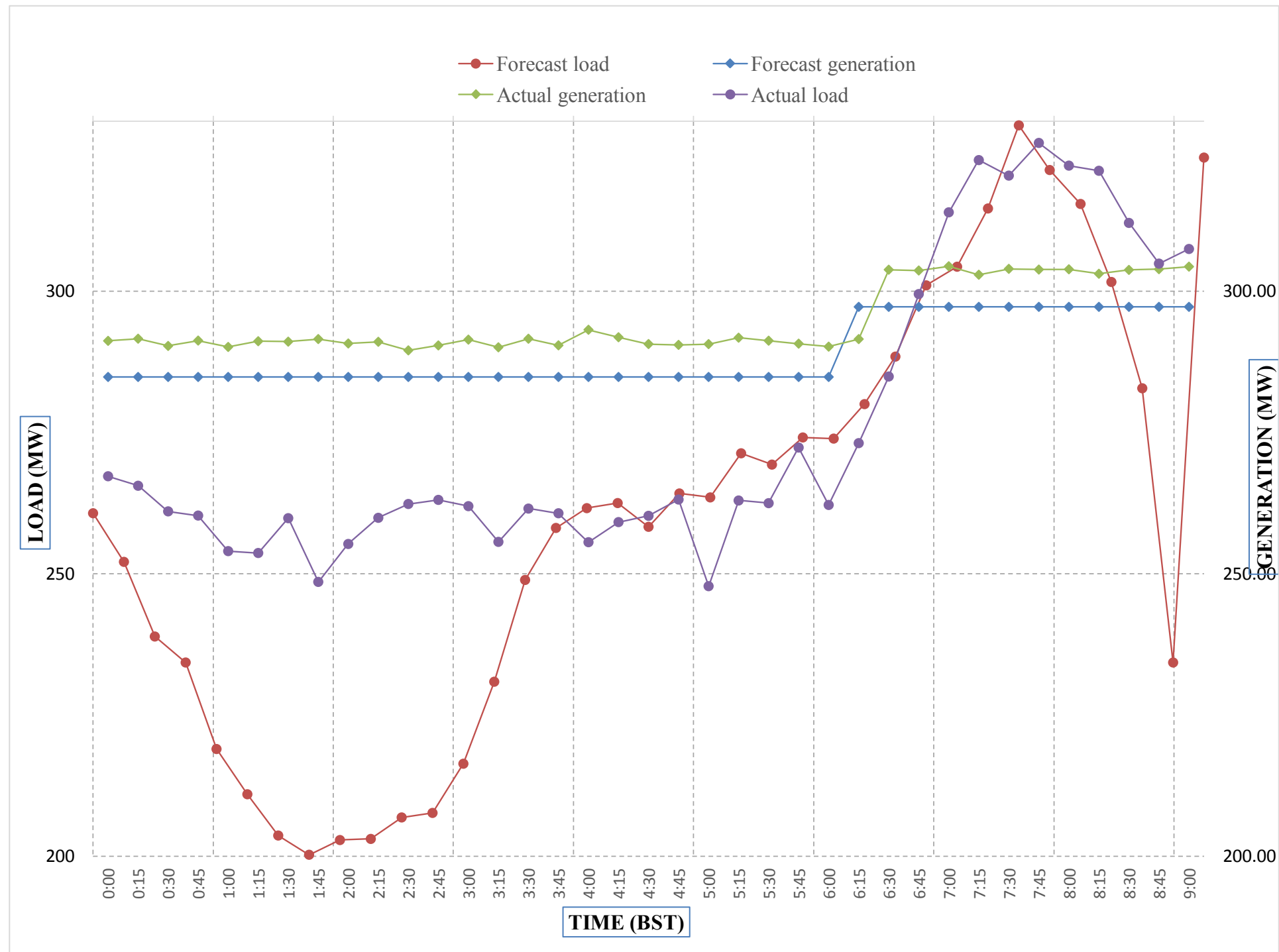
Maximum Load till date:	
362.09	14-Nov-17



Message No.: Enter your message number
 From: Shift In-charge, Control Room

Date: 6-Feb-18
 Time: 8:49

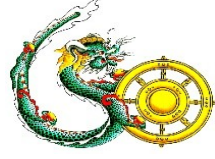
Forecast Generation & Load with Actual Generation & Load of Today from 00:00hrs to 09:00hrs(06-Feb-2018).



Yours faithfully
 Karma Yangden



འབྲུག་གྲོག་ལེན་ལྷན་ཁག།
Bhutan Power Corporation Ltd.
Bhutan Power System Operator
 Thimphu: Bhutan



Message No.: Enter your message number **Date:** 6-Feb-18
From: Shift In-charge, Control Room **Time:** 8:49

To
 Managing Director, BPC. Email: gemtshering@bpc.bt
 Director, O&MD, DGPC. Email: director.omid@drukgreen.com
 General Manager, TD, BPC. Email: ktobgye@bpc.bt
 Advisor, BPC. Email: bharattamang@bpc.bt

Sub: Load Generation Balance Report of Tomorrow (07-Feb-2018).

Hours (BST)	Forecast		Hours (BST)	Forecast	
	Generation	Load		Generation	Load
0:00	284.20	265.70	12:00	284.20	285.10
0:15	284.20	260.30	12:15	284.20	284.10
0:30	284.20	247.70	12:30	284.20	281.10
0:45	284.20	246.20	12:45	284.20	276.70
1:00	284.20	233.50	13:00	284.20	275.10
1:15	284.20	225.50	13:15	284.20	274.70
1:30	284.20	218.10	13:30	284.20	273.40
1:45	284.20	212.30	13:45	284.20	270.20
2:00	284.20	215.90	14:00	284.20	270.80
2:15	284.20	212.50	14:15	284.20	271.80
2:30	284.20	219.10	14:30	284.20	272.00
2:45	284.20	224.10	14:45	284.20	269.30
3:00	284.20	232.40	15:00	284.20	264.00
3:15	284.20	244.00	15:15	284.20	265.70
3:30	284.20	254.50	15:30	273.50	273.50
3:45	284.20	261.10	15:45	272.00	272.00
4:00	284.20	262.90	16:00	271.50	271.50
4:15	284.20	265.20	16:15	276.80	276.80
4:30	284.20	263.90	16:30	279.30	279.30
4:45	284.20	272.50	16:45	284.20	287.00
5:00	284.20	276.80	17:00	284.20	294.10
5:15	284.20	285.60	17:15	296.70	301.30
5:30	284.20	285.50	17:30	296.70	308.00
6:45	284.20	289.50	17:45	296.70	314.60
6:00	284.20	282.10	18:00	296.70	325.10
6:15	296.70	282.70	18:15	296.70	332.40
6:30	296.70	291.00	18:30	296.70	338.90
6:45	296.70	302.00	18:45	296.70	340.50
7:00	296.70	307.70	19:00	296.70	339.30
7:15	296.70	317.50	19:15	296.70	337.60
7:30	296.70	330.00	19:30	296.70	333.80
7:45	296.70	326.80	19:45	296.70	329.90
8:00	296.70	325.80	20:00	296.70	325.10
8:15	296.70	316.60	20:15	296.70	322.90
8:30	296.70	284.00	20:30	296.70	320.20
8:45	296.70	249.40	20:45	296.70	321.30
9:00	296.70	322.70	21:00	296.70	320.00
9:15	284.20	302.00	21:15	296.70	314.60
9:30	284.20	296.60	21:30	296.70	312.70
9:45	284.20	298.00	21:45	296.70	305.70
10:00	284.20	296.90	22:00	284.20	301.80
10:15	284.20	294.90	22:15	284.20	299.00
10:30	284.20	294.50	22:30	284.20	299.20
10:45	284.20	291.10	22:45	284.20	295.40
11:00	284.20	292.70	23:00	284.20	288.10
11:15	284.20	288.30	23:15	280.80	280.80
11:30	284.20	288.30	23:30	282.30	282.30
11:45	284.20	287.20	23:45	279.20	279.20

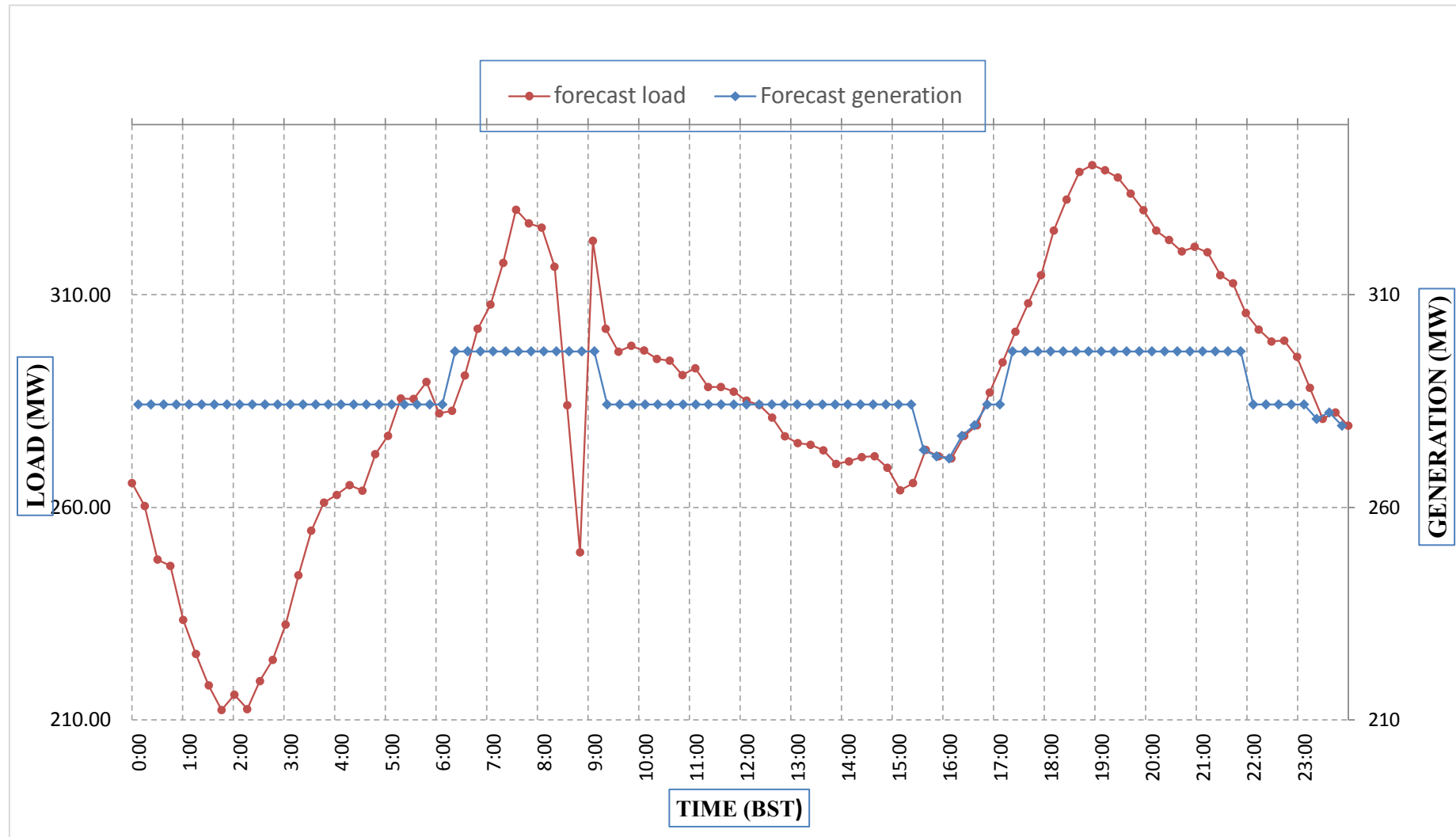
Yours faithfully,
 Karma Yangden



Message No.: Enter your message number
 From: Shift In-charge, Control Room

Date: 6-Feb-18
 Time: 8:49

Forecast Generation & Load Forecast for Tomorrow (07-Feb-2018).



Yours faithfully,
 Karma Yangden

	MW
Scheduled Peak Generation(07-Feb-2018).	296.70
Forecast Peak Load(07-Feb-2018).	340.50



འབྲུག་གྲོག་ཚེ་ལས་འཛིན།

Bhutan Power Corporation Ltd.
Bhutan Power System Operator
Thimphu: Bhutan



Message No.: Enter your message number Date: 6-Feb-18
From: Shift In-charge, Control Room Time: 8:49

To
Managing Director, BPC. Email: gemtshering@bpc.bt
Director, O&MD, DGPC. Email: director.umd@drukgreen.com
General Manager, TD, BPC. Email: ktobgye@bpc.bt
Advisor, BPC. Email: bharattamang@bpc.bt

Sub: Forecast Generation and Actual Generation of Dagachhu (05-Feb-2018).

Hours (BST)	Actual Frequency	Forecast Generation	Actual Generation	Hours (BST)	Actual Frequency	Forecast Generation	Actual Generation
0:00	50.01	19.00	19.52	12:00	50.04	19.00	19.52
0:15	50.02	19.00	19.52	12:15	49.97	19.00	19.54
0:30	50.04	19.00	19.51	12:30	49.99	19.00	19.53
0:45	50.01	19.00	19.51	12:45	49.97	19.00	19.53
1:00	50.04	19.00	19.52	13:00	49.98	19.00	19.52
1:15	50.01	19.00	19.53	13:15	50.07	19.00	19.56
1:30	50.02	19.00	19.52	13:30	50.01	19.00	18.99
1:45	50.05	19.00	19.52	13:45	49.96	19.00	18.69
2:00	50.04	19.00	19.52	14:00	49.99	19.00	18.99
2:15	50.01	19.00	19.54	14:15	49.93	19.00	18.98
2:30	50.01	19.00	19.51	14:30	49.87	19.00	18.97
2:45	50.03	19.00	19.54	14:45	49.93	19.00	18.96
3:00	50.02	19.00	19.53	15:00	49.95	19.00	18.98
3:15	50.00	19.00	19.51	15:15	50.01	19.00	18.98
3:30	50.01	19.00	19.52	15:30	49.96	19.00	19.00
3:45	50.00	19.00	19.50	15:45	49.94	19.00	18.98
4:00	49.95	19.00	19.51	16:00	49.94	19.00	19.00
4:15	49.96	19.00	19.30	16:15	49.97	19.00	18.98
4:30	50.01	19.00	19.30	16:30	49.91	19.00	19.00
4:45	50.00	19.00	19.29	16:45	49.93	19.00	18.97
5:00	49.99	19.00	19.30	17:00	49.97	19.00	18.98
5:15	50.01	19.00	19.28	17:15	50.02	19.00	19.57
5:30	49.96	19.00	19.30	17:30	49.98	19.00	19.54
6:45	50.00	19.00	19.29	17:45	49.96	19.00	19.74
6:00	49.96	19.00	19.29	18:00	50.01	19.00	19.73
6:15	49.92	19.00	19.32	18:15	49.99	19.00	19.73
6:30	49.91	19.00	19.28	18:30	50.00	19.00	19.73
6:45	49.99	19.00	19.29	18:45	49.95	19.00	19.74
7:00	49.97	19.00	19.31	19:00	49.96	19.00	19.74
7:15	49.98	19.00	19.29	19:15	49.99	19.00	19.70
7:30	49.98	19.00	19.30	19:30	49.98	19.00	19.70
7:45	49.96	19.00	19.31	19:45	50.03	19.00	19.72
8:00	49.95	19.00	19.31	20:00	50.06	19.00	19.74
8:15	49.97	19.00	19.31	20:15	50.03	19.00	19.72
8:30	49.98	19.00	19.29	20:30	50.03	19.00	19.72
8:45	50.04	19.00	19.30	20:45	50.01	19.00	19.73
9:00	49.97	19.00	19.29	21:00	50.03	19.00	19.72
9:15	49.98	19.00	19.28	21:15	49.95	19.00	19.73
9:30	49.97	19.00	19.31	21:30	50.02	19.00	19.72
9:45	50.03	19.00	19.41	21:45	50.02	19.00	19.73
10:00	49.98	19.00	19.41	22:00	50.06	19.00	19.74
10:15	49.94	19.00	19.40	22:15	49.95	19.00	19.73
10:30	49.99	19.00	19.39	22:30	50.02	19.00	19.74
10:45	49.97	19.00	19.39	22:45	49.99	19.00	19.72
11:00	49.96	19.00	19.55	23:00	50.00	19.00	19.72
11:15	49.99	19.00	19.53	23:15	49.99	19.00	19.73
11:30	49.98	19.00	19.52	23:30	49.94	19.00	19.72
11:45		19.00	19.54	23:45	49.93	19.00	19.73

Yours faithfully,
Karma Yangden



ཕན་ལུ་འབྲུག་གྲོག་ཚེ་ལས་འཛིན།

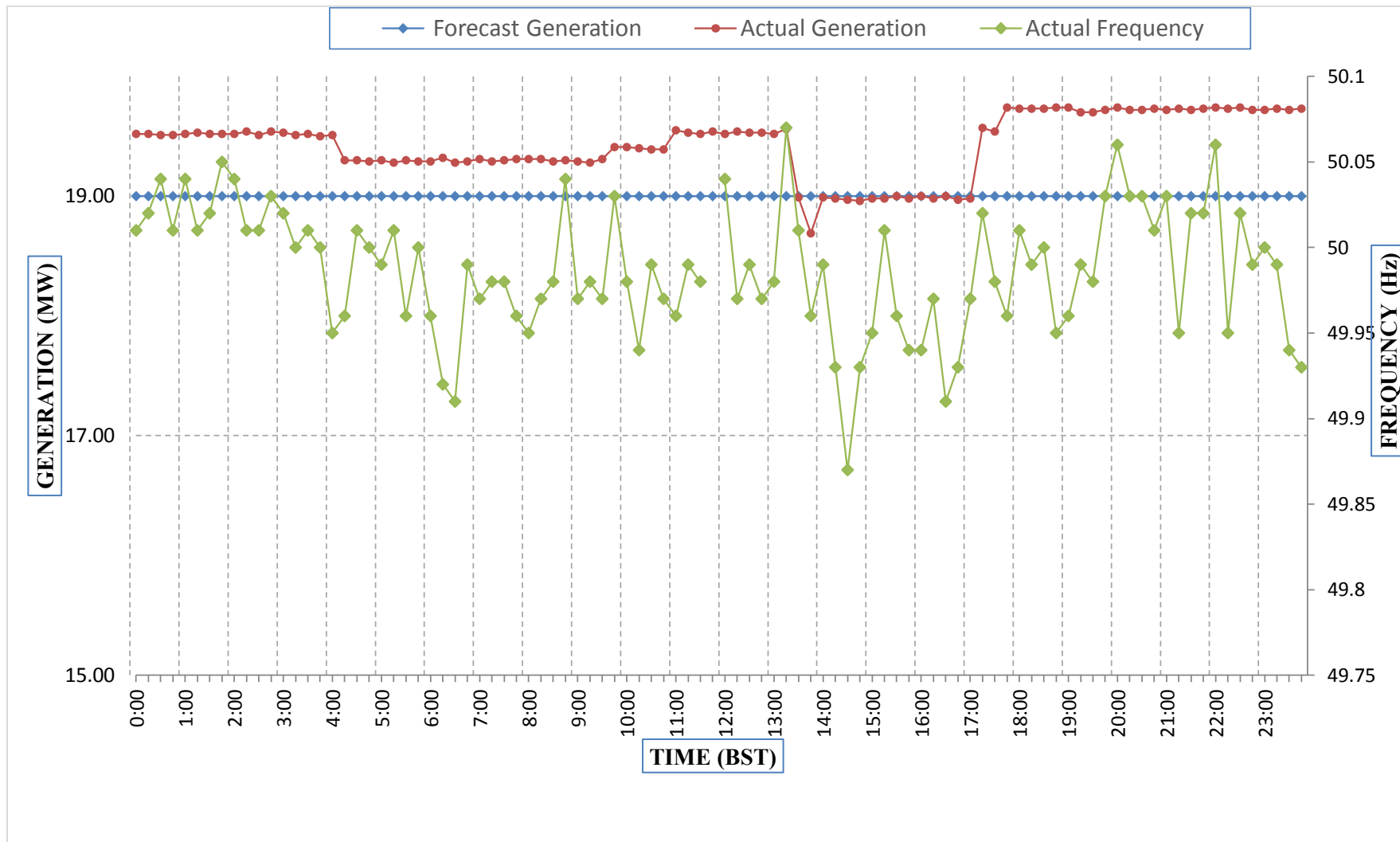
Bhutan Power Corporation Ltd.
Bhutan Power System Operator
Thimphu: Bhutan



Message No.: Enter your message number
From: Shift In-charge, Control Room

Date: 6-Feb-18
Time: 8:49

Forecast Generation & Actual Generation of Dagachhu(05-Feb-2018).



Yours faithfully,
Karma Yangden