



འབྲུག་ཤོག་མེ་ལམ་འཛིན།

Bhutan Power Corporation Ltd.
Bhutan Power System Operator
Thimphu: Bhutan



Message No.: Enter your message number
From: Shift In-charge, Control Room

Date: 4-Feb-18
Time: 10:47

To
Managing Director, BPC. Email: gemtshering@bpc.bt
Director, O&MD, DGPC. Email: director.omb@drukgreen.com
General Manager, TD, BPC. Email: ktobgye@bpc.bt
General Manager, DCSD, BPC. Email: sandeeprai@bpc.bt

Sub: **Load Generation Balance Report of Yesterday (03-Feb-2018).**

Hours (BST)	Forecast		Actual		Hours (BST)	Forecast		Actual	
	Generation	Load	Generation	Load		Generation	Load	Generation	Load
0:00	293.40	256.40	284.29	255.57	12:00	293.40	290.00	302.75	294.50
0:15	293.40	238.70	304.00	252.66	12:15	293.40	286.40	302.55	300.27
0:30	293.40	216.80	304.92	249.85	12:30	293.40	285.10	296.07	296.79
0:45	293.40	209.70	303.95	243.66	12:45	293.40	278.80	301.73	298.16
1:00	293.40	203.30	304.90	244.84	13:00	293.40	279.70	299.75	285.48
1:15	293.40	207.10	303.89	244.92	13:15	293.40	277.80	301.69	288.62
1:30	293.40	210.50	304.08	247.53	13:30	293.40	277.40	300.25	289.97
1:45	293.40	218.60	304.55	239.75	13:45	293.40	273.40	292.13	284.71
2:00	293.40	227.80	303.23	249.03	14:00	293.40	273.40	291.40	285.00
2:15	293.40	235.30	304.12	249.40	14:15	293.40	277.10	301.19	282.96
2:30	293.40	244.10	302.63	244.19	14:30	293.40	277.60	300.44	283.19
2:45	293.40	244.50	301.20	238.94	14:45	293.40	280.80	300.48	284.84
3:00	293.40	251.10	302.90	238.95	15:00	293.40	281.30	301.38	282.81
3:15	293.40	255.90	302.01	235.33	15:15	293.40	281.50	301.62	291.54
3:30	293.40	259.30	301.99	232.47	15:30	293.40	283.70	301.01	287.89
3:45	293.40	259.60	302.59	232.64	15:45	293.40	281.90	300.30	275.26
4:00	293.40	259.70	301.25	235.48	16:00	293.40	283.70	300.27	289.97
4:15	293.40	259.70	302.16	231.68	16:15	293.40	284.70	301.11	287.45
4:30	293.40	259.40	304.35	233.96	16:30	293.40	289.50	301.01	295.34
4:45	293.40	260.10	301.99	235.80	16:45	293.40	293.30	301.78	293.09
5:00	293.40	260.50	303.58	237.87	17:00	293.40	300.00	301.19	286.58
5:15	293.40	263.50	302.02	236.39	17:15	306.00	306.50	301.27	299.21
5:30	293.40	263.90	302.41	242.83	17:30	306.00	314.40	313.96	313.49
5:45	293.40	261.60	302.48	241.62	17:45	306.00	319.60	314.23	320.74
6:00	293.40	262.80	302.88	244.93	18:00	306.00	330.30	313.85	333.33
6:15	306.00	267.20	301.59	257.46	18:15	306.00	338.80	314.50	341.57
6:30	306.00	271.20	315.97	264.67	18:30	306.00	343.20	314.11	345.89
6:45	306.00	281.50	316.45	276.98	18:45	306.00	341.20	314.66	345.48
7:00	306.00	292.20	316.55	281.42	19:00	306.00	340.90	313.93	348.72
7:15	306.00	301.00	315.11	297.82	19:15	306.00	335.00	293.53	346.01
7:30	306.00	315.70	315.58	302.41	19:30	306.00	333.60	294.01	342.98
7:45	306.00	316.90	314.92	292.30	19:45	306.00	328.70	294.11	341.84
8:00	306.00	315.60	315.04	288.48	20:00	306.00	325.20	294.17	337.72
8:15	306.00	309.70	316.10	294.62	20:15	306.00	323.00	294.40	329.89
8:30	306.00	306.90	315.18	290.79	20:30	306.00	320.10	294.15	326.93
8:45	306.00	293.30	314.97	297.19	20:45	306.00	321.50	294.50	326.95
9:00	306.00	277.00	313.42	300.62	21:00	306.00	320.30	295.90	320.39
9:15	293.40	302.60	300.89	303.09	21:15	293.40	316.90	282.42	313.78
9:30	293.40	298.50	301.24	296.07	21:30	293.40	313.80	281.70	304.16
9:45	293.40	299.20	302.35	292.53	21:45	293.40	307.90	285.76	297.58
10:00	293.40	297.20	302.72	295.41	22:00	293.40	304.20	285.97	281.88
10:15	293.40	292.10	302.50	295.73	22:15	293.40	296.70	305.81	282.71
10:30	293.40	290.10	302.24	300.06	22:30	293.40	295.10	309.44	282.59
10:45	293.40	287.00	303.90	299.70	22:45	293.40	290.80	309.88	269.20
11:00	293.40	289.80	302.54	297.02	23:00	293.40	289.70	308.98	274.51
11:15	293.40	291.10	302.07	294.03	23:15	293.40	282.50	309.99	270.91
11:30	293.40	291.20	301.34	299.79	23:30	293.40	285.20	308.05	265.30
11:45	293.40	290.80	302.31	297.15	23:45	293.40	282.20	308.66	262.83

Yours faithfully
Tshering Deki

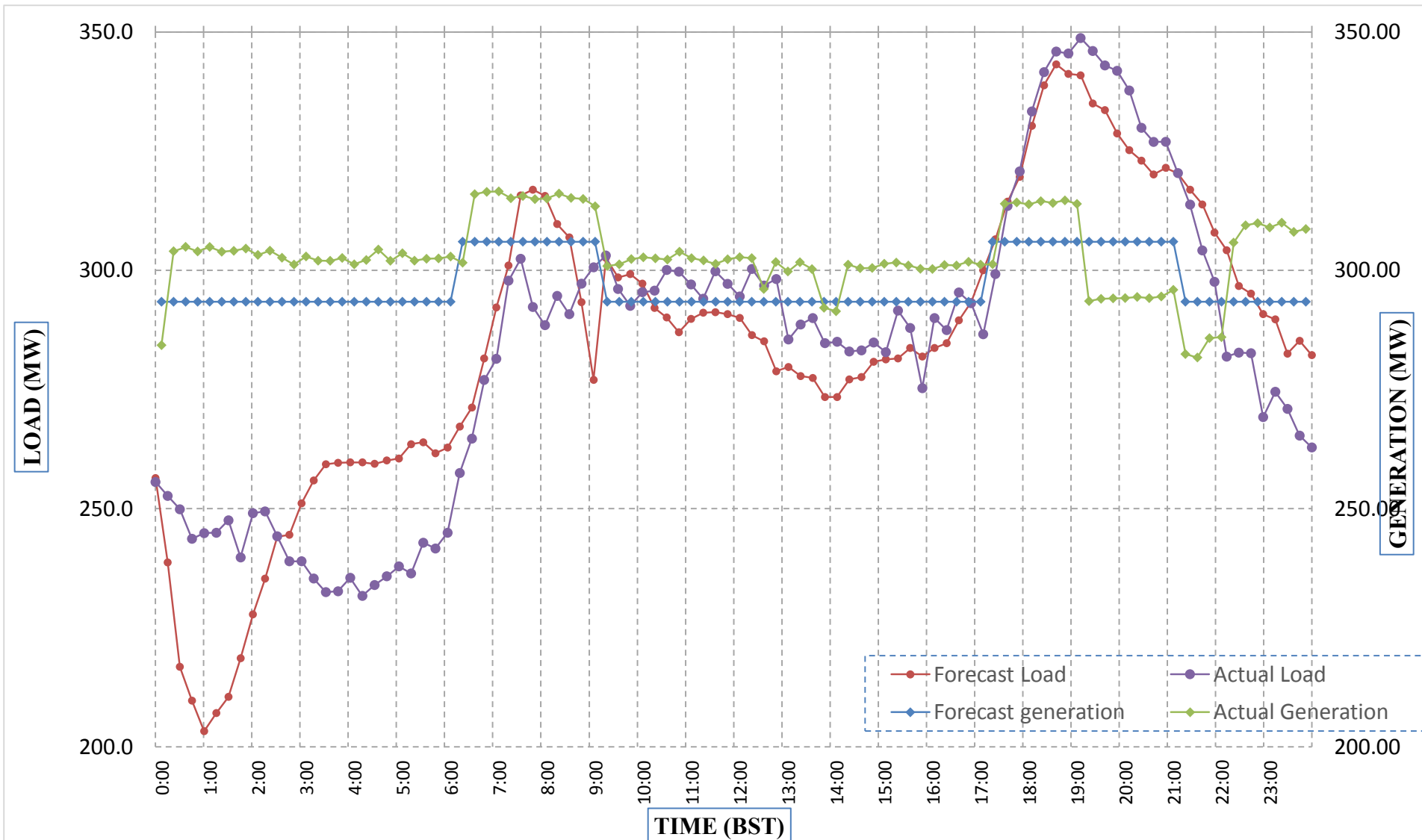
Coincidental peak load of Day(Last year):	
291.02	3-Feb-17
Maximum Load till date:	
362.09	14-Nov-17



Message No.: Enter your message number
From: Shift In-charge, Control Room

Date: 4-Feb-18
Time: 10:47

Forecast Generation & Load with Actual Generation & Load (03-Feb-2018).



Yours faithfully,
 Tshering Deki

	MW	Coincidental peak load of Day(Last year):	
Peak Co-incidental Generation(03-Feb-2018).	316.55	291.02	3-Feb-17
Peak Co-incidental Load(03-Feb-2018).	348.72		
		Maximum Load till date:	
		362.09	14-Nov-17



ལྷན་ རྒྱལ་གྱི་ལོ་ལས་འཛིན།

Bhutan Power Corporation Ltd.
Bhutan Power System Operator
Thimphu: Bhutan



Message No.: Enter your message number
From: Shift In-charge, Control Room

Date: 4-Feb-18
Time: 10:47

To
Managing Director, BPC. Email: gemtshering@bpc.bt
Director, O&MD, DGPC. Email: director.umd@drukgreen.com
General Manager, TD, BPC. Email: thinleygyeltshen@bpc.bt
General Manager, DCSD, BPC. Email: sandeeprai@bpc.bt

Sub: Load Generation Balance Report of Today (04-Feb-2018).

Hours (BST)	Forecast		Actual	
	Generation	Load	Generation	Load
0:00	286.00	273.10	310.66	255.56
0:15	286.00	267.40	310.31	254.58
0:30	286.00	256.60	309.91	255.31
0:45	286.00	238.60	311.53	258.84
1:00	286.00	218.40	310.61	256.55
1:15	286.00	210.60	309.49	252.32
1:30	286.00	204.80	309.55	255.88
1:45	286.00	202.50	307.16	255.42
2:00	286.00	206.50	307.39	259.73
2:15	286.00	207.90	308.11	258.77
2:30	286.00	211.10	307.93	259.68
2:45	286.00	209.10	306.08	244.89
3:00	286.00	214.90	306.34	250.18
3:15	286.00	226.80	303.41	255.16
3:30	286.00	229.10	302.31	260.30
3:45	286.00	241.30	301.44	254.69
4:00	286.00	252.10	302.70	259.73
4:15	286.00	253.20	302.75	261.69
4:30	286.00	256.40	300.50	261.88
4:45	286.00	270.30	301.39	260.82
5:00	286.00	270.30	301.45	245.20
5:15	286.00	276.20	301.79	250.48
5:30	286.00	277.60	301.67	248.78
5:45	286.00	276.20	299.57	249.61
6:00	286.00	275.90	300.72	251.83
6:15	286.00	279.90	302.20	251.18
6:30	286.40	286.20	315.17	255.00
6:45	306.00	296.80	314.43	272.04
7:00	310.40	308.20	314.80	256.45
7:15	319.80	313.00	313.03	279.32
7:30	342.20	331.00	314.05	285.39
7:45	348.40	334.10	312.87	277.50
8:00	328.80	324.30	314.16	276.22
8:15	306.00	305.60	313.81	277.99
8:30	290.70	288.30	313.68	277.70
8:45	286.00	241.00	313.95	278.68
9:00	337.70	328.70	312.95	282.34

Coincidental peak load of Day(Last year):	
301.09	4-Feb-18
Maximum Load till date:	
362.09	14-Nov-17

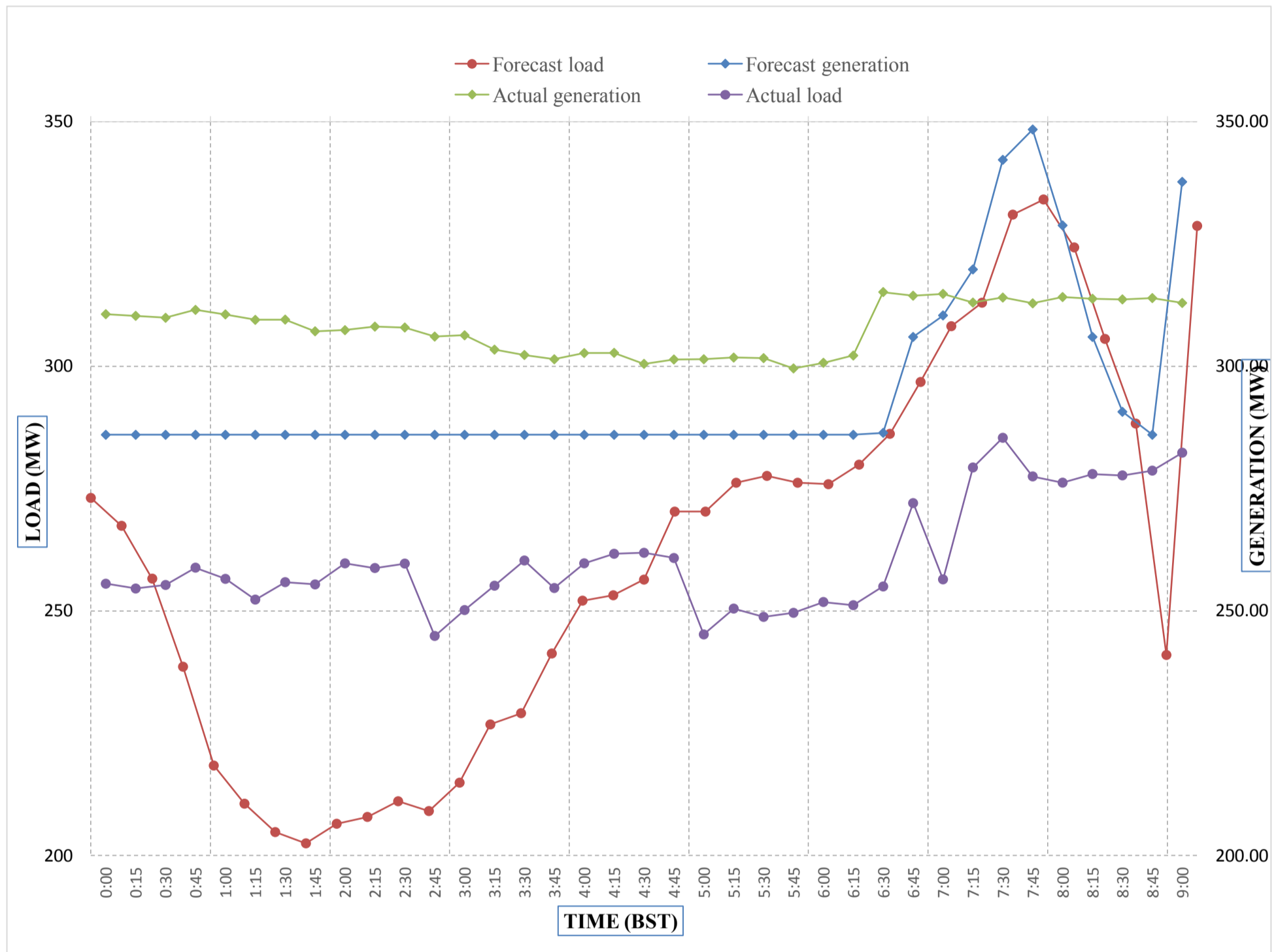
Yours faithfully,
Tshering Deki



Message No.: Enter your message number
 From: Shift In-charge, Control Room

Date: 4-Feb-18
 Time: 10:47

Forecast Generation & Load with Actual Generation & Load of Today from 00:00hrs to 09:00hrs(04-Feb-2018).



Yours faithfully
 Tshering Deki



འབྲུག་གྲོག་ལེ་ལམ་འཛིན།
Bhutan Power Corporation Ltd.
Bhutan Power System Operator
 Thimphu: Bhutan



Message No.: Enter your message number **Date:** 4-Feb-18
From: Shift In-charge, Control Room **Time:** 10:47

To
 Managing Director, BPC. Email: gemtshering@bpc.bt
 Director, O&MD, DGPC. Email: director.umd@drukgreen.com
 General Manager, TD, BPC. Email: ktobgye@bpc.bt
 Advisor, BPC. Email: bharattamang@bpc.bt

Sub: Load Generation Balance Report of Tomorrow (05-Feb-2018).

Hours (BST)	Forecast		Hours (BST)	Forecast	
	Generation	Load		Generation	Load
0:00	281.60	271.60	12:00	296.50	281.50
0:15	278.90	268.90	12:15	295.30	280.30
0:30	271.70	261.70	12:30	293.90	278.90
0:45	276.10	256.10	12:45	290.50	275.50
1:00	269.40	249.40	13:00	288.30	273.30
1:15	267.60	247.60	13:15	287.30	272.30
1:30	262.50	242.50	13:30	287.10	272.10
1:45	248.30	228.30	13:45	283.10	268.10
2:00	236.90	216.90	14:00	282.20	267.20
2:15	233.50	213.50	14:15	284.10	269.10
2:30	224.90	204.90	14:30	287.50	272.50
2:45	216.10	196.10	14:45	287.00	272.00
3:00	214.70	194.70	15:00	289.40	274.40
3:15	223.90	203.90	15:15	293.40	278.40
3:30	235.90	215.90	15:30	296.50	281.50
3:45	241.50	231.50	15:45	291.00	276.00
4:00	258.60	248.60	16:00	294.00	279.00
4:15	265.70	255.70	16:15	298.00	283.00
4:30	263.30	253.30	16:30	305.00	290.00
4:45	272.40	262.40	16:45	306.50	291.50
5:00	277.10	267.10	17:00	311.70	296.70
5:15	286.60	276.60	17:15	317.40	302.40
5:30	285.70	275.70	17:30	324.90	309.90
6:45	293.80	283.80	17:45	332.20	317.20
6:00	295.30	285.30	18:00	329.20	329.20
6:15	300.80	290.80	18:15	336.30	336.30
6:30	309.60	299.60	18:30	342.20	342.20
6:45	321.90	311.90	18:45	343.20	341.10
7:00	339.00	321.20	19:00	343.20	340.80
7:15	339.00	328.40	19:15	343.20	336.70
7:30	344.40	344.40	19:30	343.20	333.30
7:45	339.00	335.70	19:45	343.20	329.60
8:00	332.10	317.10	20:00	338.70	323.70
8:15	303.00	288.00	20:15	336.20	321.20
8:30	267.40	252.40	20:30	333.90	318.90
8:45	256.30	236.30	20:45	334.70	319.70
9:00	336.40	321.40	21:00	331.00	316.00
9:15	316.80	301.80	21:15	327.20	312.20
9:30	310.00	295.00	21:30	323.70	308.70
9:45	309.70	294.70	21:45	317.20	302.20
10:00	310.60	295.60	22:00	315.20	300.20
10:15	309.10	294.10	22:15	314.50	299.50
10:30	307.50	292.50	22:30	319.10	304.10
10:45	306.40	291.40	22:45	314.20	299.20
11:00	305.40	290.40	23:00	311.30	296.30
11:15	298.90	283.90	23:15	299.40	284.40
11:30	298.40	283.40	23:30	298.50	283.50
11:45	295.40	280.40	23:45	294.60	279.60

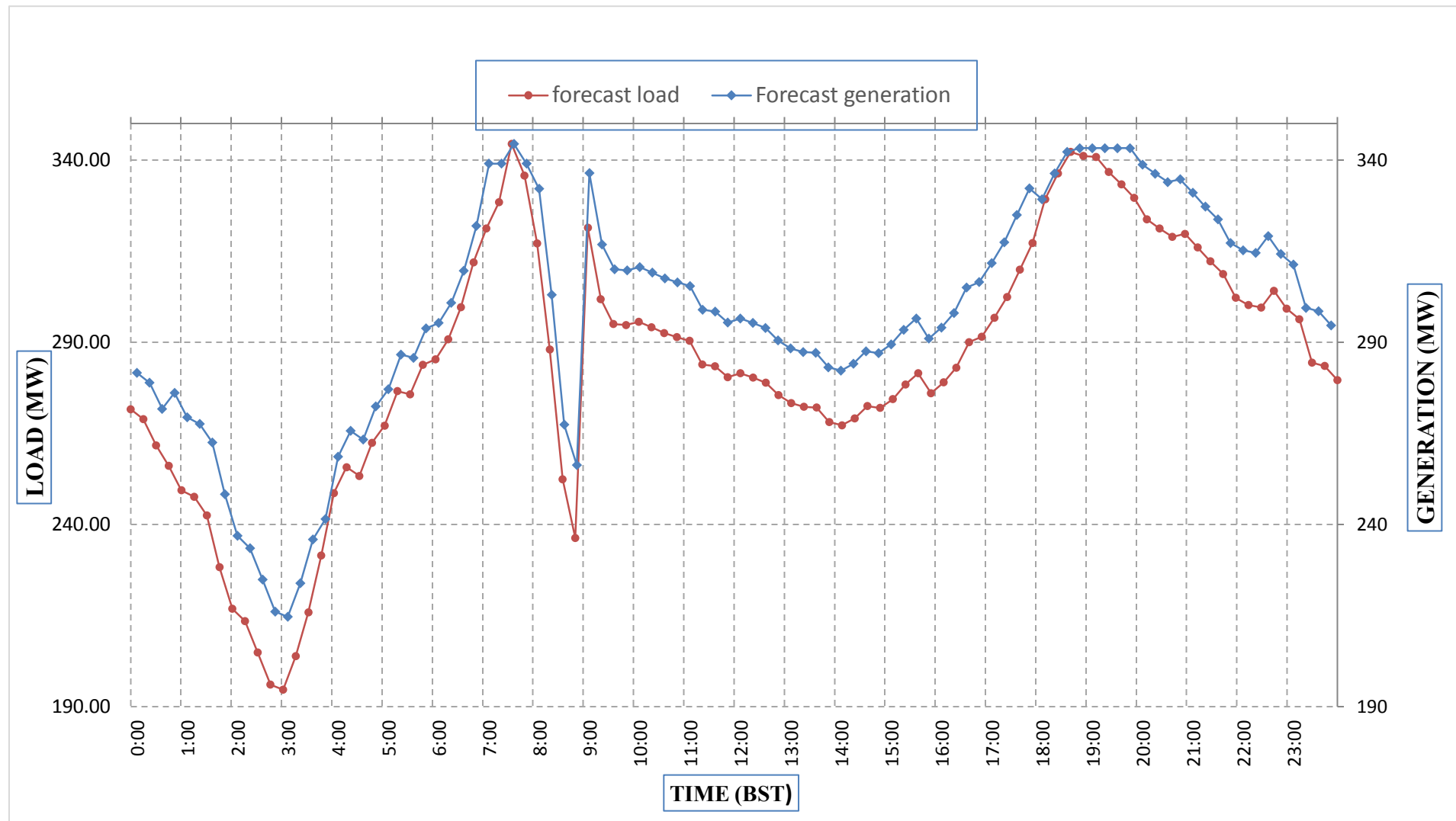
Yours faithfully,
 Tshering Deki



Message No.: Enter your message number
 From: Shift In-charge, Control Room

Date: 4-Feb-18
 Time: 10:47

Forecast Generation & Load Forecast for Tomorrow (05-Feb-2018).



Yours faithfully,
 Tshering Deki

	MW
Scheduled Peak Generation(05-Feb-2018).	344.40
Forecast Peak Load(05-Feb-2018).	344.40



Bhutan Power Corporation Ltd.
 Bhutan Power System Operator
 Thimphu: Bhutan

ཕྱག་ལུགས་ལྷན་ཁག་ལྷན་ཁག་།



Message No.: Enter your message number
From: Shift In-charge, Control Room

Date: 4-Feb-18
Time: 10:47

To
 Managing Director, BPC. Email: gemtshering@bpc.bt
 Director, O&MD, DGPC. Email: director.omid@drukgreen.com
 General Manager, TD, BPC. Email: ktobgye@bpc.bt
 Advisor, BPC. Email: bharrattamang@bpc.bt

Sub: Forecast Generation and Actual Generation of Dagachhu (03-Feb-2018).

Hours (BST)	Actual Frequency	Forecast Generation	Actual Generation	Hours (BST)	Actual Frequency	Forecast Generation	Actual Generation
0:00	49.95	19.50	19.75	12:00	49.94	19.50	19.53
0:15	50.00	19.50	19.73	12:15	49.97	19.50	18.99
0:30	49.97	19.50	19.76	12:30	49.96	19.50	14.67
0:45	49.98	19.50	19.76	12:45	50.01	19.50	19.01
1:00	49.97	19.50	19.75	13:00	50.01	19.50	18.97
1:15	49.99	19.50	19.76	13:15	49.97	19.50	18.99
1:30	49.97	19.50	19.75	13:30	49.97	19.50	18.97
1:45	49.98	19.50	19.73	13:45	50.00	19.50	9.97
2:00	49.97	19.50	19.73	14:00	49.98	19.50	10.33
2:15	49.99	19.50	19.74	14:15	49.97	19.50	19.52
2:30	49.99	19.50	19.74	14:30	49.92	19.50	19.51
2:45	49.99	19.50	19.72	14:45	49.95	19.50	19.51
3:00	50.04	19.50	19.74	15:00	49.99	19.50	19.50
3:15	50.00	19.50	19.73	15:15	49.95	19.50	19.50
3:30	50.01	19.50	19.74	15:30	49.92	19.50	19.50
3:45	50.04	19.50	19.73	15:45	49.97	19.50	19.50
4:00	49.97	19.50	19.74	16:00	49.94	19.50	19.52
4:15	50.00	19.50	19.75	16:15	49.93	19.50	19.51
4:30	49.98	19.50	19.71	16:30	49.91	19.50	19.51
4:45	49.99	19.50	19.74	16:45	49.91	19.50	19.52
5:00	49.96	19.50	19.74	17:00	50.00	19.50	19.52
5:15	49.95	19.50	19.72	17:15	49.98	19.50	19.51
5:30	49.97	19.50	19.73	17:30	49.99	19.50	19.51
6:45	49.99	19.50	19.74	17:45	50.01	19.50	19.50
6:00	49.99	19.50	19.74	18:00	50.02	19.50	19.51
6:15	49.98	19.50	19.76	18:15	50.01	19.50	19.50
6:30	49.98	19.50	19.75	18:30	49.94	19.50	19.51
6:45	49.97	19.50	19.72	18:45	49.98	19.50	19.51
7:00	50.03	19.50	19.74	19:00	49.98	19.50	19.51
7:15	50.02	19.50	19.74	19:15	50.01	19.50	19.51
7:30	49.99	19.50	19.74	19:30	50.01	19.50	19.48
7:45	49.97	19.50	19.75	19:45	50.01	19.50	19.52
8:00	50.00	19.50	19.76	20:00	50.00	19.50	19.54
8:15	49.99	19.50	19.73	20:15	49.95	19.50	19.51
8:30	49.97	19.50	19.74	20:30	50.01	19.50	19.51
8:45	50.02	19.50	19.75	20:45	50.04	19.50	19.51
9:00	49.95	19.50	19.74	21:00	49.99	19.50	19.50
9:15	49.95	19.50	19.73	21:15	49.99	19.50	19.52
9:30	50.00	19.50	19.75	21:30	50.01	19.50	19.51
9:45	50.03	19.50	19.76	21:45	50.06	19.50	19.50
10:00	49.96	19.50	19.75	22:00	49.91	19.50	19.49
10:15	50.00	19.50	19.73	22:15	49.95	19.50	19.51
10:30	49.97	19.50	19.75	22:30	49.95	19.50	19.50
10:45	50.04	19.50	19.75	22:45	49.97	19.50	19.51
11:00	50.01	19.50	19.76	23:00	49.93	19.50	19.50
11:15	49.99	19.50	19.75	23:15	49.93	19.50	19.52
11:30	49.97	19.50	19.75	23:30	49.97	19.50	19.51
11:45	50.05	19.50	19.73	23:45	50.00	19.50	19.51

Yours faithfully,
 Tshering Deki



འབྲུག་རྒྱལ་ཁོ་ལས་འཛིན།

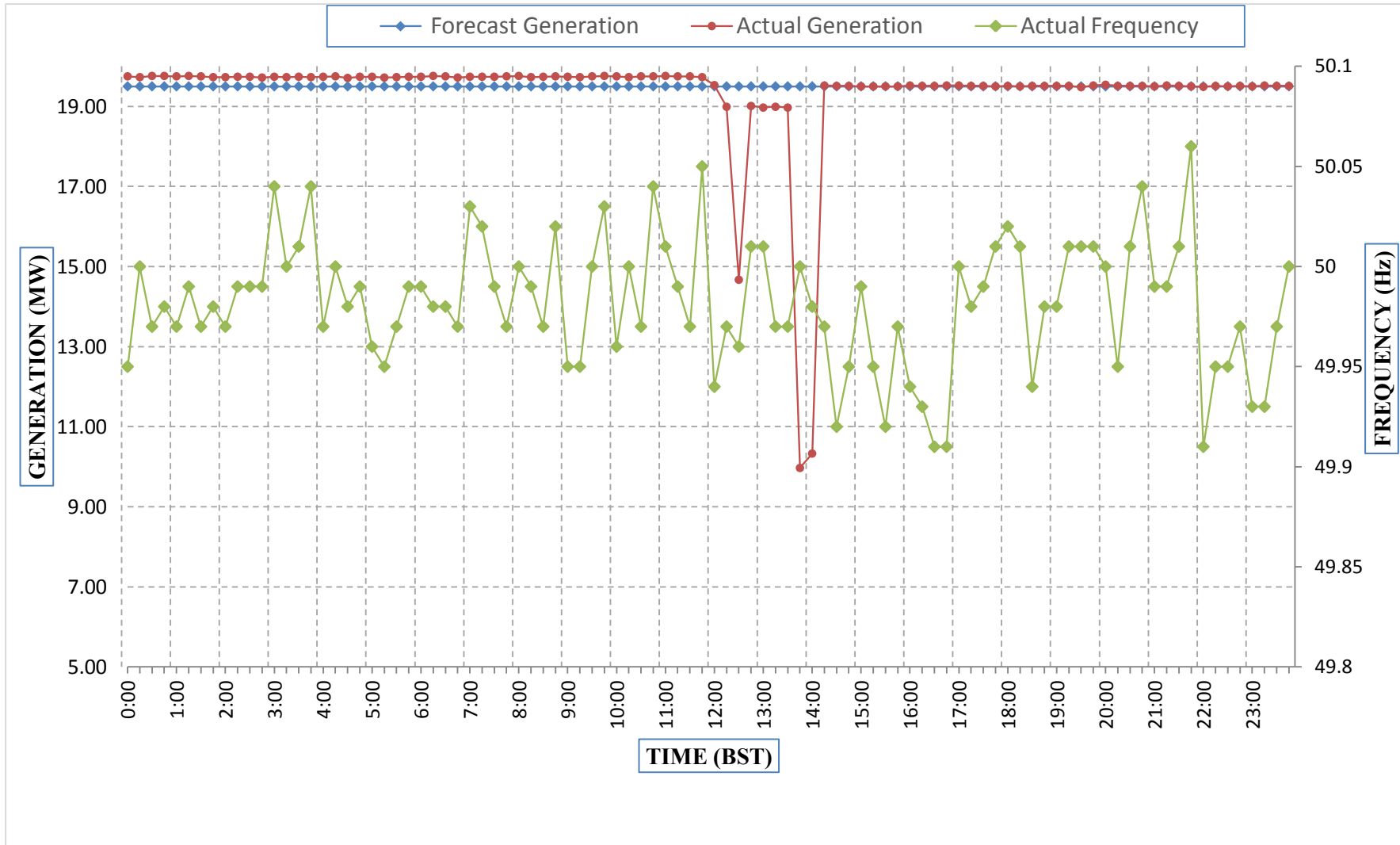
Bhutan Power Corporation Ltd.
Bhutan Power System Operator
Thimphu: Bhutan



Message No.: Enter your message number
From: Shift In-charge, Control Room

Date: 3-Feb-18
Time: 10:47

Forecast Generation & Actual Generation of Dagachhu(02-Feb-2018).



Yours faithfully,
Tshering Deki