



ཕྱུག་རྒྱལ་ལོ་ལས་འཛིན།

Bhutan Power Corporation Ltd.  
Bhutan Power System Operator  
Thimphu: Bhutan



Message No.: Enter your message number  
From: Shift In-charge, Control Room

Date: 3-Feb-18  
Time: 10:47

To  
Managing Director, BPC. Email: gemtshering@bpc.bt  
Director, O&MD, DGPC. Email: director.omb@drukgreen.com  
General Manager, TD, BPC. Email: ktobgye@bpc.bt  
General Manager, DCSD, BPC. Email: sandeeprai@bpc.bt

Sub: Load Generation Balance Report of Yesterday (02-Feb-2018).

Hours (BST)	Forecast		Actual		Hours (BST)	Forecast		Actual	
	Generation	Load	Generation	Load		Generation	Load	Generation	Load
0:00	295.80	263.20	298.93	260.95	12:00	295.80	289.70	281.05	247.55
0:15	295.80	254.10	300.90	260.20	12:15	295.80	283.60	280.48	248.51
0:30	295.80	238.20	299.72	259.09	12:30	295.80	283.00	280.88	242.20
0:45	295.80	226.80	301.41	248.49	12:45	295.80	279.50	280.77	244.56
1:00	295.80	210.20	300.02	255.97	13:00	295.80	280.40	280.24	239.50
1:15	295.80	210.00	300.73	248.44	13:15	295.80	277.20	279.65	239.31
1:30	295.80	209.30	300.87	254.59	13:30	295.80	278.60	281.43	238.56
1:45	295.80	207.60	300.71	248.74	13:45	295.80	272.90	282.84	238.30
2:00	295.80	213.00	300.61	248.09	14:00	295.80	273.70	281.87	236.65
2:15	295.80	217.00	300.38	248.31	14:15	295.80	278.90	281.42	233.40
2:30	295.80	217.50	300.16	248.14	14:30	295.80	278.00	281.29	244.45
2:45	295.80	215.10	298.67	252.83	14:45	295.80	280.10	281.50	247.54
3:00	295.80	223.00	299.15	254.25	15:00	295.80	280.20	280.71	239.38
3:15	295.80	238.60	301.85	252.51	15:15	295.80	281.30	281.82	252.93
3:30	295.80	252.60	281.49	248.93	15:30	295.80	283.40	282.00	258.26
3:45	295.80	255.20	281.29	254.40	15:45	295.80	280.90	282.27	254.93
4:00	295.80	256.40	282.55	248.32	16:00	295.80	283.10	285.95	259.73
4:15	295.80	259.20	280.99	255.24	16:15	295.80	283.70	299.71	261.79
4:30	295.80	259.50	281.01	250.13	16:30	295.80	288.40	348.37	273.11
4:45	295.80	261.00	280.34	255.97	16:45	295.80	292.90	351.50	279.88
5:00	295.80	261.40	282.55	254.44	17:00	295.80	301.30	351.34	284.29
5:15	295.80	264.80	281.27	259.93	17:15	308.40	308.70	349.95	290.09
5:30	295.80	264.90	280.43	262.48	17:30	308.40	313.60	364.06	292.55
5:45	295.80	267.60	281.27	263.73	17:45	308.40	318.90	363.82	299.95
6:00	295.80	267.80	293.87	264.61	18:00	308.40	328.70	364.32	316.25
6:15	308.40	271.70	293.87	261.75	18:15	308.40	337.60	364.26	324.40
6:30	308.40	273.40	293.63	271.55	18:30	308.40	342.10	363.18	331.37
6:45	308.40	283.00	294.60	287.34	18:45	308.40	339.30	294.80	329.91
7:00	308.40	292.50	294.65	294.27	19:00	308.40	339.30	293.64	329.08
7:15	308.40	300.30	294.73	305.92	19:15	308.40	334.70	295.56	328.78
7:30	308.40	317.40	293.43	309.56	19:30	308.40	333.10	295.53	320.87
7:45	308.40	318.30	293.79	316.53	19:45	308.40	330.50	305.89	320.66
8:00	308.40	317.70	294.13	318.27	20:00	308.40	325.20	304.65	315.51
8:15	308.40	311.80	293.73	317.83	20:15	308.40	323.90	300.91	309.39
8:30	308.40	307.90	293.11	319.16	20:30	308.40	321.10	299.00	305.80
8:45	308.40	277.20	293.67	320.18	20:45	308.40	321.00	297.15	304.41
9:00	308.40	301.20	293.30	314.41	21:00	308.40	320.20	297.13	304.05
9:15	295.80	304.00	278.73	299.52	21:15	295.80	318.90	285.80	301.51
9:30	295.80	298.90	281.05	297.38	21:30	295.80	317.70	285.43	302.98
9:45	295.80	300.70	281.32	292.30	21:45	295.80	311.70	284.24	293.92
10:00	295.80	299.60	280.95	290.64	22:00	295.80	310.30	285.03	287.10
10:15	295.80	293.40	281.14	295.30	22:15	295.80	301.90	285.08	273.13
10:30	295.80	290.00	280.95	292.72	22:30	295.80	300.80	284.59	273.04
10:45	295.80	286.70	278.86	291.20	22:45	295.80	296.30	284.55	268.91
11:00	295.80	290.80	281.42	281.95	23:00	295.80	296.20	285.31	262.25
11:15	295.80	290.20	280.34	248.18	23:15	295.80	285.70	285.27	246.18
11:30	295.80	291.20	280.80	249.52	23:30	295.80	282.30	285.16	253.66
11:45	295.80	289.90	280.23	242.86	23:45	295.80	275.40	284.12	259.45

Yours faithfully  
Tshering Deki

Coincidental peak load of Day(Last year):	
304.78 MW	2-Feb-17
Maximum Load till date:	
362.09	14-Nov-17



འབྲུག་རྒྱལ་ཁོ་ལས་འཛིན།

Bhutan Power Corporation Ltd.  
 Bhutan Power System Operator  
 Thimphu: Bhutan

Message No.: Enter your message number  
 From: Shift In-charge, Control Room

Forecast Generation & Load with Actual Generation & Load (02-Feb-2018)



Yours faithfully,  
 Tshering Deki

Peak Co-incident Generation(02-Feb-2018). 36  
 Peak Co-incident Load(02-Feb-2018). 33



**འབྲུག་གྲོག་ལེ་ལས་ཁུངས།**  
**Bhutan Power Corporation Ltd.**  
**Bhutan Power System Operator**  
**Thimphu: Bhutan**



**Message No.:** Enter your message number  
**From:** Shift In-charge, Control Room

**Date:** 3-Feb-18  
**Time:** 10:47

**To**  
 Managing Director, BPC. Email: gemtshering@bpc.bt  
 Director, O&MD, DGPC. Email: director.omid@drukgreen.com  
 General Manager, TD, BPC. Email: thinleygyeltshen@bpc.bt  
 General Manager, DCSD, BPC. Email: sandeeprai@bpc.bt

**Sub:** Load Generation Balance Report of Today (03-Feb-2018).

Hours (BST)	Forecast		Actual	
	Generation	Load	Generation	Load
0:00	293.40	256.40	284.29	255.57
0:15	293.40	238.70	304.00	252.66
0:30	293.40	216.80	304.92	249.85
0:45	293.40	209.70	303.95	243.66
1:00	293.40	203.30	304.90	244.84
1:15	293.40	207.10	303.89	244.92
1:30	293.40	210.50	304.08	247.53
1:45	293.40	218.60	304.55	239.75
2:00	293.40	227.80	303.23	249.03
2:15	293.40	235.30	304.12	249.40
2:30	293.40	244.10	302.63	244.19
2:45	293.40	244.50	301.20	238.94
3:00	293.40	251.10	302.90	238.95
3:15	293.40	255.90	302.01	235.33
3:30	293.40	259.30	301.99	232.47
3:45	293.40	259.60	302.59	232.64
4:00	293.40	259.70	301.25	235.48
4:15	293.40	259.70	302.16	231.68
4:30	293.40	259.40	304.35	233.96
4:45	293.40	260.10	301.99	235.80
5:00	293.40	260.50	303.58	237.87
5:15	293.40	263.50	302.02	236.39
5:30	293.40	263.90	302.41	242.83
5:45	293.40	261.60	302.48	241.62
6:00	293.40	262.80	302.88	244.93
6:15	306.00	267.20	301.59	257.46
6:30	306.00	271.20	315.97	264.67
6:45	306.00	281.50	316.45	276.98
7:00	306.00	292.20	316.55	281.42
7:15	306.00	301.00	315.11	297.82
7:30	306.00	315.70	315.58	302.41
7:45	306.00	316.90	314.92	292.30
8:00	306.00	315.60	315.04	288.48
8:15	306.00	309.70	316.10	294.62
8:30	306.00	306.90	315.18	290.79
8:45	306.00	293.30	314.97	297.19
9:00	306.00	277.00	313.42	300.62

Coincidental peak load of Day(Last year):	
291.02	3-Feb-18

Maximum Load till date:	
362.09	14-Nov-17

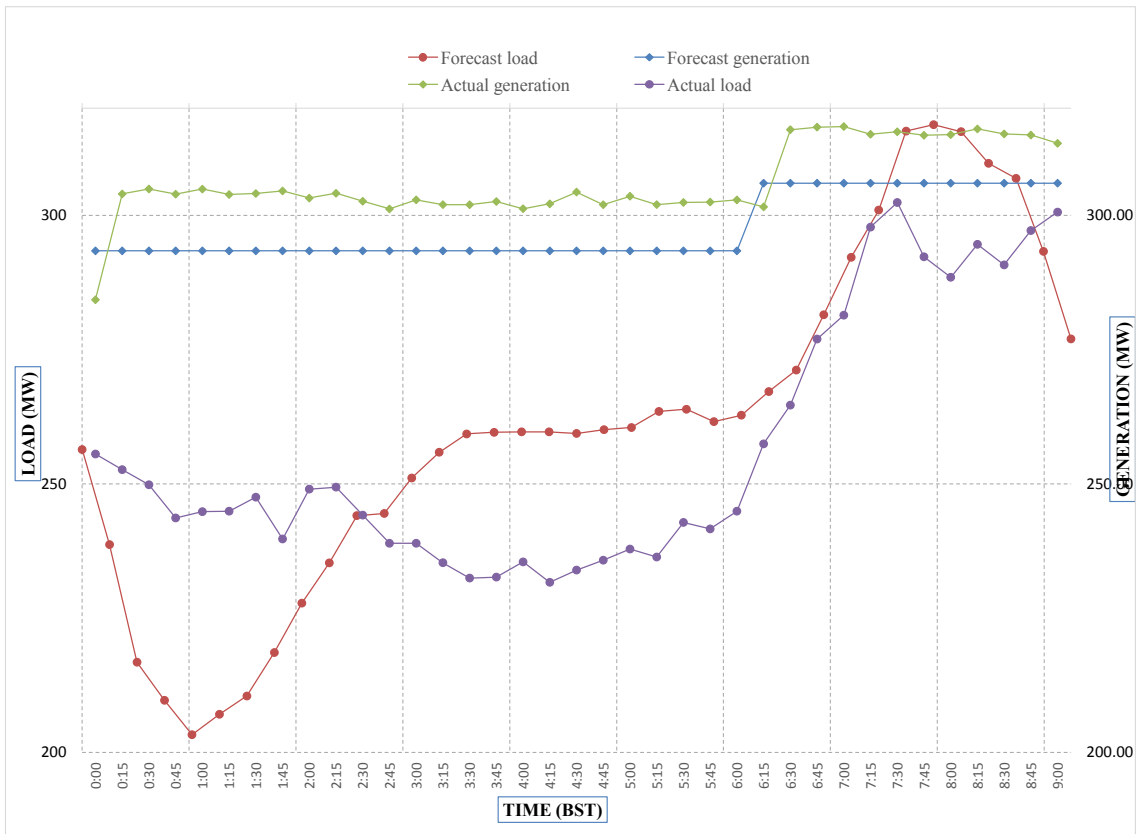
Yours faithfully,  
 Tshering Deki



Message No.: Enter your message number  
 From: Shift In-charge, Control Room

Date: 3-Feb-18  
 Time: 10:47

Forecast Generation & Load with Actual Generation & Load of Today from 00:00hrs to 09:00hrs(03-Feb-2018).



Yours faithfully  
 Tshering Deki



འབྲུག་ལྷན་རྒྱུ་ལས་ཁུངས་ལ.ལ.  
**Bhutan Power Corporation Ltd.**  
**Bhutan Power System Operator**  
**Thimphu: Bhutan**



**Message No.:** Enter your message number **Date:** 3-Feb-18  
**From:** Shift In-charge, Control Room **Time:** 10:47

**To**  
 Managing Director, BPC. Email: gemtshering@bpc.bt  
 Director, O&MD, DGPC. Email: director.omb@drukgreen.com  
 General Manager, TD, BPC. Email: ktobgye@bpc.bt  
 Advisor, BPC. Email: bharattamang@bpc.bt

**Sub:** Load Generation Balance Report of Tomorrow (04-Feb-2018).

Hours (BST)	Forecast		Hours (BST)	Forecast	
	Generation	Load		Generation	Load
0:00	286.00	273.10	12:00	286.00	277.10
0:15	286.00	267.40	12:15	286.00	274.60
0:30	286.00	256.60	12:30	286.00	272.20
0:45	286.00	238.60	12:45	286.00	267.60
1:00	286.00	218.40	13:00	286.00	268.30
1:15	286.00	210.60	13:15	286.00	267.20
1:30	286.00	204.80	13:30	286.00	266.20
1:45	286.00	202.50	13:45	286.00	264.20
2:00	286.00	206.50	14:00	286.00	263.10
2:15	286.00	207.90	14:15	286.00	265.20
2:30	286.00	211.10	14:30	286.00	267.90
2:45	286.00	209.10	14:45	286.00	269.00
3:00	286.00	214.90	15:00	286.00	271.40
3:15	286.00	226.80	15:15	286.00	274.30
3:30	286.00	229.10	15:30	286.00	277.10
3:45	286.00	241.30	15:45	286.00	275.80
4:00	286.00	252.10	16:00	286.00	276.40
4:15	286.00	253.20	16:15	286.00	278.90
4:30	286.00	256.40	16:30	286.00	285.20
4:45	286.00	270.30	16:45	290.20	288.10
5:00	286.00	270.30	17:00	303.70	294.80
5:15	286.00	276.20	17:15	306.00	302.30
5:30	286.00	277.60	17:30	308.30	307.20
6:45	286.00	276.20	17:45	319.80	313.70
6:00	286.00	275.90	18:00	333.60	326.70
6:15	286.00	279.90	18:15	348.10	334.00
6:30	286.40	286.20	18:30	360.00	339.90
6:45	306.00	296.80	18:45	356.50	338.20
7:00	310.40	308.20	19:00	354.90	337.30
7:15	319.80	313.00	19:15	341.60	332.90
7:30	342.20	331.00	19:30	339.10	329.40
7:45	348.40	334.10	19:45	331.20	325.50
8:00	328.80	324.30	20:00	322.10	321.00
8:15	306.00	305.60	20:15	319.80	319.30
8:30	290.70	288.30	20:30	319.80	316.80
8:45	286.00	241.00	20:45	319.80	318.10
9:00	337.70	328.70	21:00	319.80	317.40
9:15	306.00	301.00	21:15	319.40	314.80
9:30	304.00	295.00	21:30	312.40	311.40
9:45	306.00	296.30	21:45	306.00	305.50
10:00	300.70	293.30	22:00	306.00	300.50
10:15	296.60	291.30	22:15	296.20	291.10
10:30	293.10	289.50	22:30	294.20	290.10
10:45	286.60	286.30	22:45	286.40	286.20
11:00	286.00	285.80	23:00	286.00	281.90
11:15	286.00	278.90	23:15	286.00	274.20
11:30	286.00	279.50	23:30	286.00	278.30
11:45	286.00	276.00	23:45	286.00	275.90

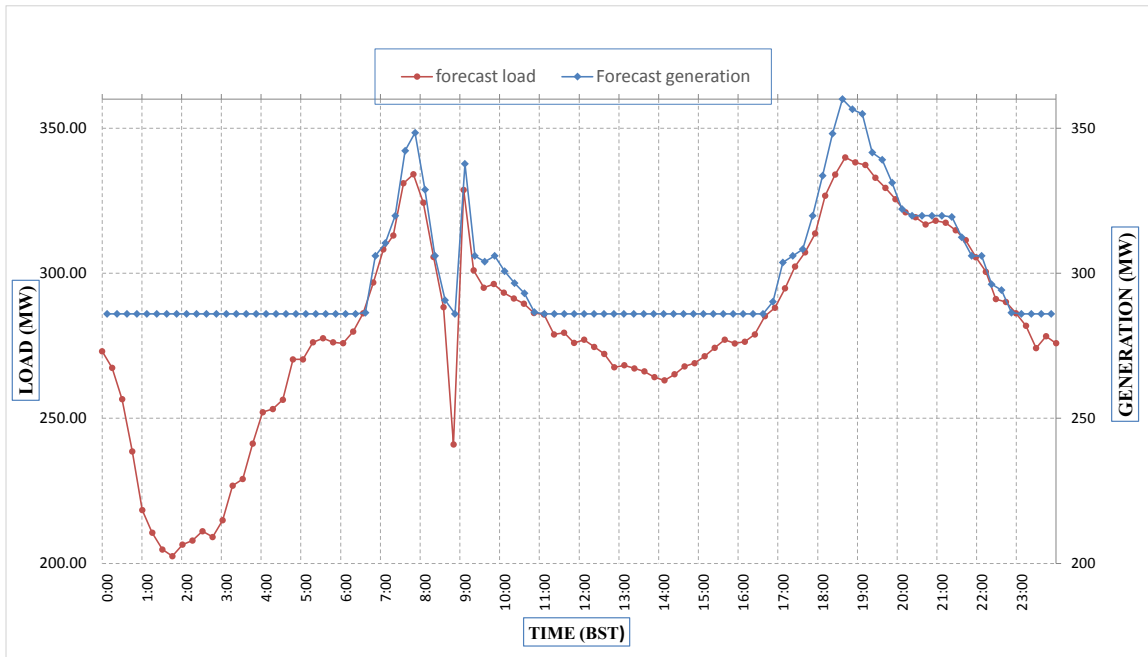
Yours faithfully,  
 Tshering Deki



Message No.: Enter your message number  
 From: Shift In-charge, Control Room

Date: 3-Feb-18  
 Time: 10:47

Forecast Generation & Load Forecast for Tomorrow (04-Feb-2018).



Yours faithfully,  
 Tshering Deki

	MW
Scheduled Peak Generation(04-Feb-2018).	360.00
Forecast Peak Load(04-Feb-2018).	339.90



འབྲུག་གྲོང་ཁའི་ལྷན་ཁག་།

Bhutan Power Corporation Ltd.  
Bhutan Power System Operator  
Thimphu: Bhutan



Message No.: Enter your message number  
From: Shift In-charge, Control Room

Date: 3-Feb-18  
Time: 10:47

To  
Managing Director, BPC. Email: gemtshering@bpc.bt  
Director, O&MD, DGPC. Email: director.omb@drukgreen.com  
General Manager, TD, BPC. Email: ktobgye@bpc.bt  
Advisor, BPC. Email: bharamtamang@bpc.bt

Sub: Forecast Generation and Actual Generation of Dagachhu (02-Feb-2018).

Hours (BST)	Actual Frequency	Forecast Generation	Actual Generation	Hours (BST)	Actual Frequency	Forecast Generation	Actual Generation
0:00	49.99	20.00	19.84	12:00	49.95	20.00	20.00
0:15	49.99	20.00	19.82	12:15	49.93	20.00	20.00
0:30	49.97	20.00	19.82	12:30	49.93	20.00	20.01
0:45	49.95	20.00	19.82	12:45	50.05	20.00	20.01
1:00	50.01	20.00	19.84	13:00	50.07	20.00	20.01
1:15	49.98	20.00	19.82	13:15	49.97	20.00	20.01
1:30	49.98	20.00	19.81	13:30	50.00	20.00	19.99
1:45	50.02	20.00	19.82	13:45	50.00	20.00	20.00
2:00	50.02	20.00	19.82	14:00	50.08	20.00	20.00
2:15	50.01	20.00	19.83	14:15	50.01	20.00	20.01
2:30	49.98	20.00	19.83	14:30	50.00	20.00	20.00
2:45	49.97	20.00	19.82	14:45	50.00	20.00	20.16
3:00	49.99	20.00	19.83	15:00	50.03	20.00	20.16
3:15	49.99	20.00	19.84	15:15	49.96	20.00	20.35
3:30	50.00	20.00	19.83	15:30	49.94	20.00	20.34
3:45	50.03	20.00	19.82	15:45	49.96	20.00	20.33
4:00	49.99	20.00	19.83	16:00	50.02	20.00	20.35
4:15	49.98	20.00	19.84	16:15	49.99	20.00	20.35
4:30	50.02	20.00	19.82	16:30	49.96	20.00	20.35
4:45	50.03	20.00	19.80	16:45	49.96	20.00	20.35
5:00	49.94	20.00	19.80	17:00	49.99	20.00	20.36
5:15	49.93	20.00	19.80	17:15	49.95	20.00	20.35
5:30	49.94	20.00	19.89	17:30	49.97	20.00	20.35
6:45	49.96	20.00	19.89	17:45	50.03	20.00	20.37
6:00	49.96	20.00	19.91	18:00	50.00	20.00	20.33
6:15	50.00	20.00	19.91	18:15	50.00	20.00	20.34
6:30	49.95	20.00	19.92	18:30	49.94	20.00	20.35
6:45	49.89	20.00	19.93	18:45	49.95	20.00	20.36
7:00	49.97	20.00	19.90	19:00	49.99	20.00	20.37
7:15	49.95	20.00	20.04	19:15	49.99	20.00	20.35
7:30	49.96	20.00	20.02	19:30	50.02	20.00	20.37
7:45	50.05	20.00	20.01	19:45	50.02	20.00	20.32
8:00	49.97	20.00	20.01	20:00	49.97	20.00	20.35
8:15	49.95	20.00	20.01	20:15	50.02	20.00	20.34
8:30	49.99	20.00	20.02	20:30	50.00	20.00	20.02
8:45	50.04	20.00	20.00	20:45	50.04	20.00	20.04
9:00	49.98	20.00	20.00	21:00	49.95	20.00	20.04
9:15	49.98	20.00	20.01	21:15	50.01	20.00	20.02
9:30	49.97	20.00	20.02	21:30	50.01	20.00	19.53
9:45	49.95	20.00	20.01	21:45	50.07	20.00	19.54
10:00	49.89	20.00	20.01	22:00	49.96	20.00	19.49
10:15	49.95	20.00	20.00	22:15	49.98	20.00	19.53
10:30	49.98	20.00	20.00	22:30	49.97	20.00	19.51
10:45	50.01	20.00	20.01	22:45	50.00	20.00	19.50
11:00	49.93	20.00	20.03	23:00	50.01	20.00	19.51
11:15	49.98	20.00	20.01	23:15	49.96	20.00	19.51
11:30	49.96	20.00	20.01	23:30	50.05	20.00	19.49
11:45	50.04	20.00	20.00	23:45	50.05	20.00	19.49

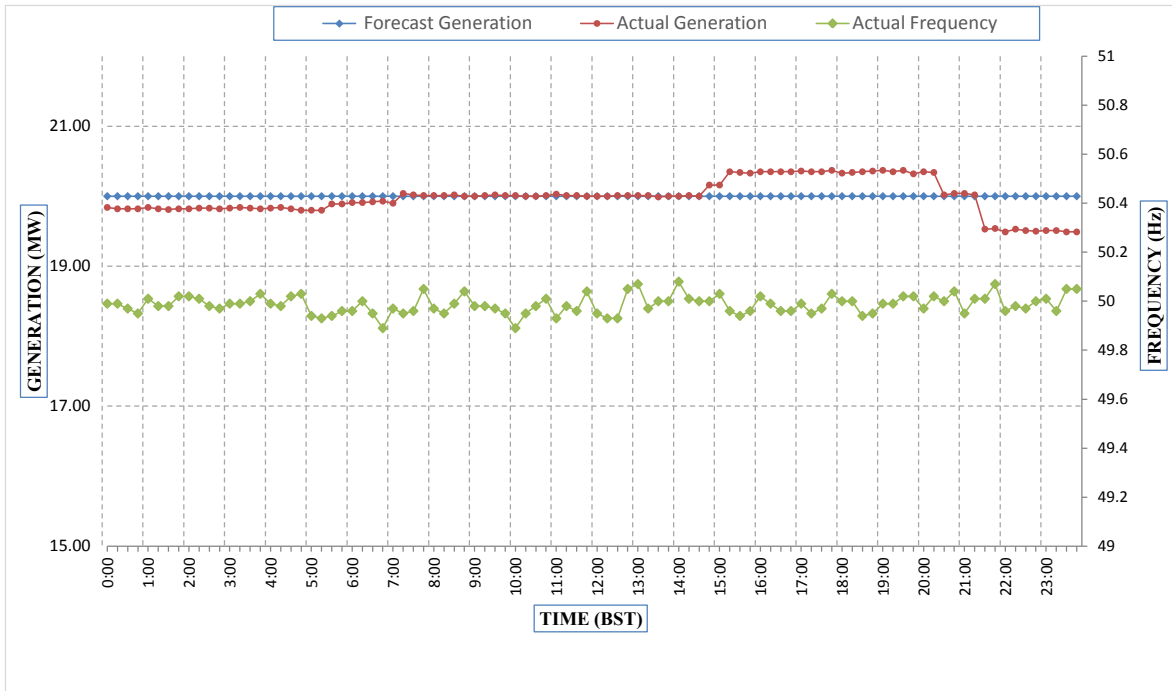
Yours faithfully,  
Tshering Deki



Message No.: Enter your message number  
 From: Shift In-charge, Control Room

Date: 3-Feb-18  
 Time: 10:47

Forecast Generation & Actual Generation of Dagachhu(02-Feb-2018).



Yours faithfully,  
 Tshering Deki



