



འབྲུག་གླིང་མེ་ལམ་འཛིན།

Bhutan Power Corporation Ltd.
Bhutan Power System Operator
Thimphu: Bhutan



Message No.: Enter your message number
From: Shift In-charge, Control Room

Date: 2-Feb-18
Time: 10:47

To
Managing Director, BPC. Email: gemtshering@bpc.bt
Director, O&MD, DGPC. Email: director.umd@drukgreen.com
General Manager, TD, BPC. Email: ktobgye@bpc.bt
General Manager, DCSD, BPC. Email: sandeeprai@bpc.bt

Sub: **Load Generation Balance Report of Yesterday (01-Feb-2018).**

Hours (BST)	Forecast		Actual		Hours (BST)	Forecast		Actual	
	Generation	Load	Generation	Load		Generation	Load	Generation	Load
0:00	346.9	285.5	307.4	261.6	12:00	346.9	295.7	305.79	289.73
0:15	346.9	281	307.0	264.5	12:15	346.9	298.1	305.57	292.00
0:30	346.9	278.2	307.0	264.8	12:30	346.9	296.1	304.72	292.52
0:45	346.9	274.9	306.3	259.2	12:45	346.9	293.8	304.73	289.29
1:00	346.9	272.3	307.0	257.2	13:00	346.9	289	303.95	280.55
1:15	346.9	273	308.2	260.0	13:15	346.9	288.1	302.10	280.80
1:30	346.9	273	306.9	255.9	13:30	346.9	285.4	305.03	275.30
1:45	346.9	266.1	306.3	258.0	13:45	346.9	244.1	307.05	272.19
2:00	346.9	270.2	306.4	255.8	14:00	346.9	282.1	305.65	271.57
2:15	346.9	267.9	305.8	254.3	14:15	346.9	282	306.55	270.84
2:30	346.9	270.3	305.4	252.5	14:30	346.9	282.3	305.41	276.23
2:45	346.9	268.6	305.2	252.2	14:45	346.9	283.4	304.66	280.80
3:00	346.9	268	305.8	248.8	15:00	346.9	281.5	307.24	289.53
3:15	346.9	265.7	308.1	250.0	15:15	346.9	281.1	306.58	284.92
3:30	346.9	267.4	306.6	252.3	15:30	346.9	282.1	307.61	283.82
3:45	346.9	264.5	305.2	251.8	15:45	346.9	280.6	305.91	283.73
4:00	346.9	266.9	305.9	253.1	16:00	346.9	283.5	308.27	288.55
4:15	346.9	267.9	306.9	252.4	16:15	346.9	286	307.97	289.80
4:30	346.9	269.2	307.2	254.9	16:30	346.9	287.4	305.10	292.81
4:45	346.9	271.2	306.7	252.2	16:45	346.9	289.1	318.30	293.00
5:00	346.9	271.4	306.1	257.4	17:00	346.9	294.5	317.28	300.48
5:15	346.9	273.6	305.3	258.3	17:15	346.9	255.4	317.48	304.64
5:30	346.9	276.8	305.6	259.7	17:30	346.9	261.7	318.55	314.08
5:45	346.9	277.9	305.3	255.4	17:45	346.9	269.3	317.87	325.05
6:00	346.9	281	305.3	246.2	18:00	346.9	329	317.68	327.70
6:15	346.9	284.7	304.8	251.9	18:15	346.9	328.6	318.56	345.69
6:30	346.9	294.3	318.4	259.6	18:30	346.9	330.4	319.98	350.91
6:45	346.9	298	319.1	277.8	18:45	346.9	276	318.83	348.18
7:00	346.9	306.6	318.1	292.7	19:00	346.9	325.6	319.32	347.91
7:15	346.9	312.2	318.3	300.9	19:15	346.9	325.5	321.20	340.92
7:30	346.9	313.5	317.1	307.9	19:30	346.9	272.7	320.95	341.08
7:45	346.9	314.2	316.7	311.2	19:45	346.9	271	319.85	321.29
8:00	346.9	314.2	316.7	310.5	20:00	346.9	316.4	320.14	326.87
8:15	346.9	318.1	317.6	303.0	20:15	346.9	316.4	319.52	328.05
8:30	346.9	316.9	317.9	302.5	20:30	346.9	317	318.05	323.35
8:45	346.9	309.3	317.9	296.2	20:45	346.9	264.2	319.75	320.99
9:00	346.9	312.2	317.8	291.8	21:00	346.9	311.1	319.85	320.53
9:15	346.9	336.3	305.16	294.38	21:15	346.9	318.7	305.48	314.93
9:30	346.9	319.4	305.36	295.48	21:30	346.9	326.2	305.77	309.71
9:45	346.9	315.1	305.84	295.24	21:45	346.9	327.7	305.48	300.30
10:00	346.9	298.3	305.73	288.27	22:00	346.9	327.5	303.72	298.15
10:15	346.9	297	305.40	287.13	22:15	346.9	334	302.49	291.27
10:30	346.9	294.9	305.85	290.44	22:30	346.9	330.8	303.08	283.89
10:45	346.9	296.1	305.71	287.94	22:45	346.9	322.9	302.30	281.46
11:00	346.9	297.7	307.05	287.20	23:00	346.9	309.4	303.30	272.85
11:15	346.9	299.1	306.16	290.60	23:15	346.9	293.1	303.57	272.59
11:30	346.9	300.9	304.72	291.98	23:30	346.9	284.7	302.84	266.98
11:45	346.9	299.2	305.05	293.73	23:45	346.9	282.6	301.99	265.08

288.39		258.18	
Coincidental peak load of Day(Last year):			
297.2 MW	1-Feb-17		
Maximum Load till date:			
362.09	14-Nov-17		

Yours faithfully
Karma Choden



འབྲུག་གློག་ལེ་ལས་འཛིན།

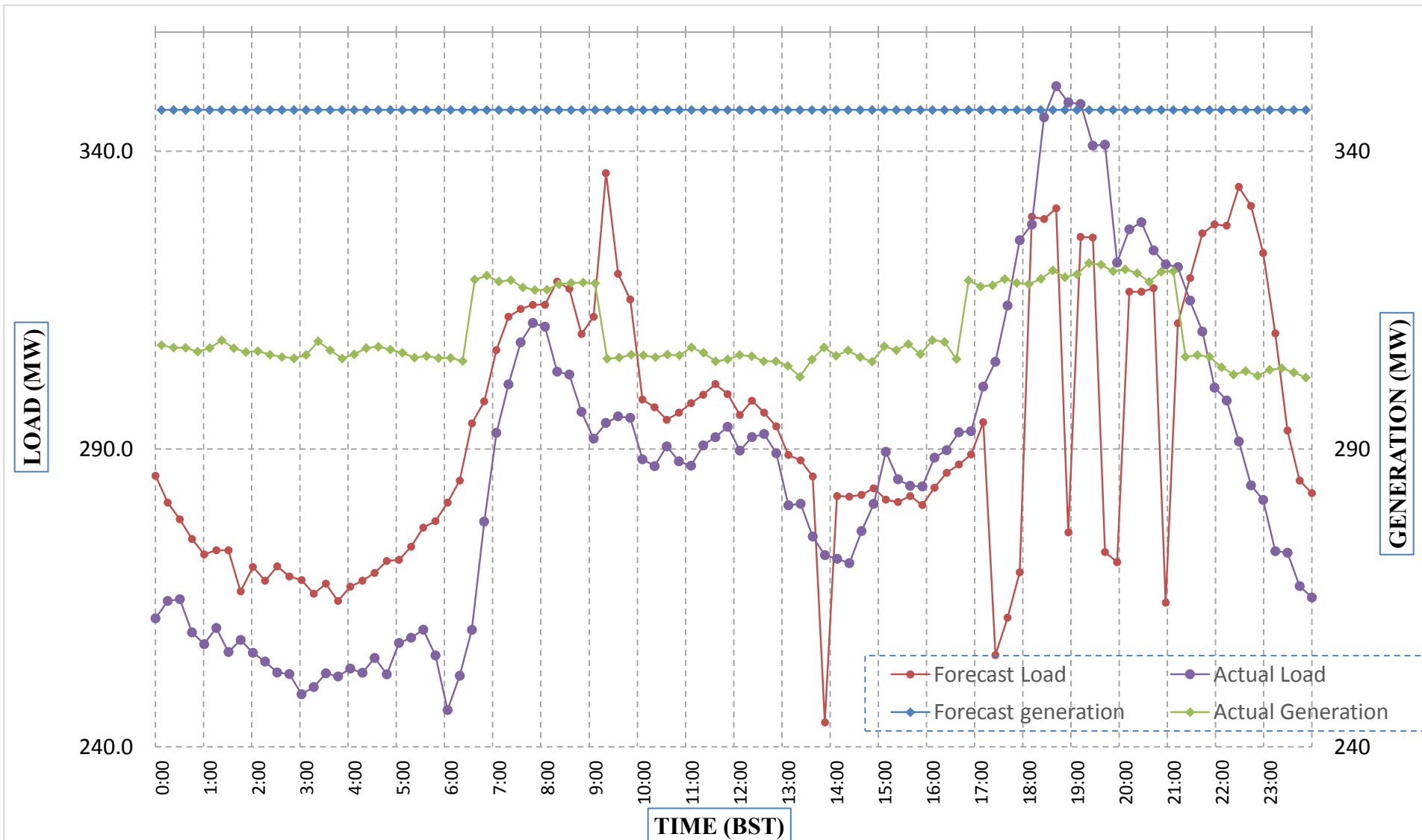
Bhutan Power Corporation Ltd.
 Bhutan Power System Operator
 Thimphu: Bhutan



Message No.: Enter your message number
 From: Shift In-charge, Control Room

Date: 2-Feb-18
 Time: 11:03

Forecast Generation & Load with Actual Generation & Load (01-Feb-2018).



Yours faithfully,
 Karma Choden

	MW	Coincidental peak load of Day(Last year):	
Peak Co-incident Generation(01-Feb-2018).	321.20	297.2 MW	1-Feb-17
Peak Co-incident Load(01-Feb-2018).	350.91	Maximum Load till date:	
		362.09	14-Nov-17

Telephone: +975-02335631; Fax: +975-02335632; Email: bhutansystemoperator@bpc.bt; www.bpc.bt



འབྲུག་གྲོག་མེ་ལས་འཛིན།

Bhutan Power Corporation Ltd.
Bhutan Power System Operator
Thimphu: Bhutan



Message No.: Enter your message number
From: Shift In-charge, Control Room

Date: 2-Feb-18
Time: 10:47

To
Managing Director, BPC. Email: gemtshering@bpc.bt
Director, O&MD, DGPC. Email: director.omid@drukgreen.com
General Manager, TD, BPC. Email: thinleygyeltshen@bpc.bt
General Manager, DCSD, BPC. Email: sandeeprai@bpc.bt

Sub: Load Generation Balance Report of Today (02-Feb-2018).

Hours (BST)	Forecast		Actual	
	Generation	Load	Generation	Load
0:00	295.8	263.2	298.9	261.0
0:15	295.8	254.1	300.9	260.2
0:30	295.8	238.2	299.7	259.1
0:45	295.8	226.8	301.4	248.5
1:00	295.8	210.2	300.0	256.0
1:15	295.8	210	300.7	248.4
1:30	295.8	209.3	300.9	254.6
1:45	295.8	207.6	300.7	248.7
2:00	295.8	213	300.6	248.1
2:15	295.8	217	300.4	248.3
2:30	295.8	217.5	300.2	248.1
2:45	295.8	215.1	298.7	252.8
3:00	295.8	223	299.1	254.3
3:15	295.8	238.6	301.9	252.5
3:30	295.8	252.6	281.5	248.9
3:45	295.8	255.2	281.3	254.4
4:00	295.8	256.4	282.6	248.3
4:15	295.8	259.2	281.0	255.2
4:30	295.8	259.5	281.0	250.1
4:45	295.8	261	280.3	256.0
5:00	295.8	261.4	282.5	254.4
5:15	295.8	264.8	281.3	259.9
5:30	295.8	264.9	280.4	262.5
5:45	295.8	267.6	281.3	263.7
6:00	295.8	267.8	293.9	264.6
6:15	308.4	271.7	293.9	261.8
6:30	308.4	273.4	293.6	271.5
6:45	308.4	283	294.6	287.3
7:00	308.4	292.5	294.6	294.3
7:15	308.4	300.3	294.7	305.9
7:30	308.4	317.4	293.4	309.6
7:45	308.4	318.3	293.8	316.5
8:00	308.4	317.7	294.1	318.3
8:15	308.4	311.8	293.7	317.8
8:30	308.4	307.9	293.1	319.2
8:45	308.4	277.2	293.7	320.2
9:00	308.4	301.2	293.3	314.4

Yours faithfully,
Karma Choden

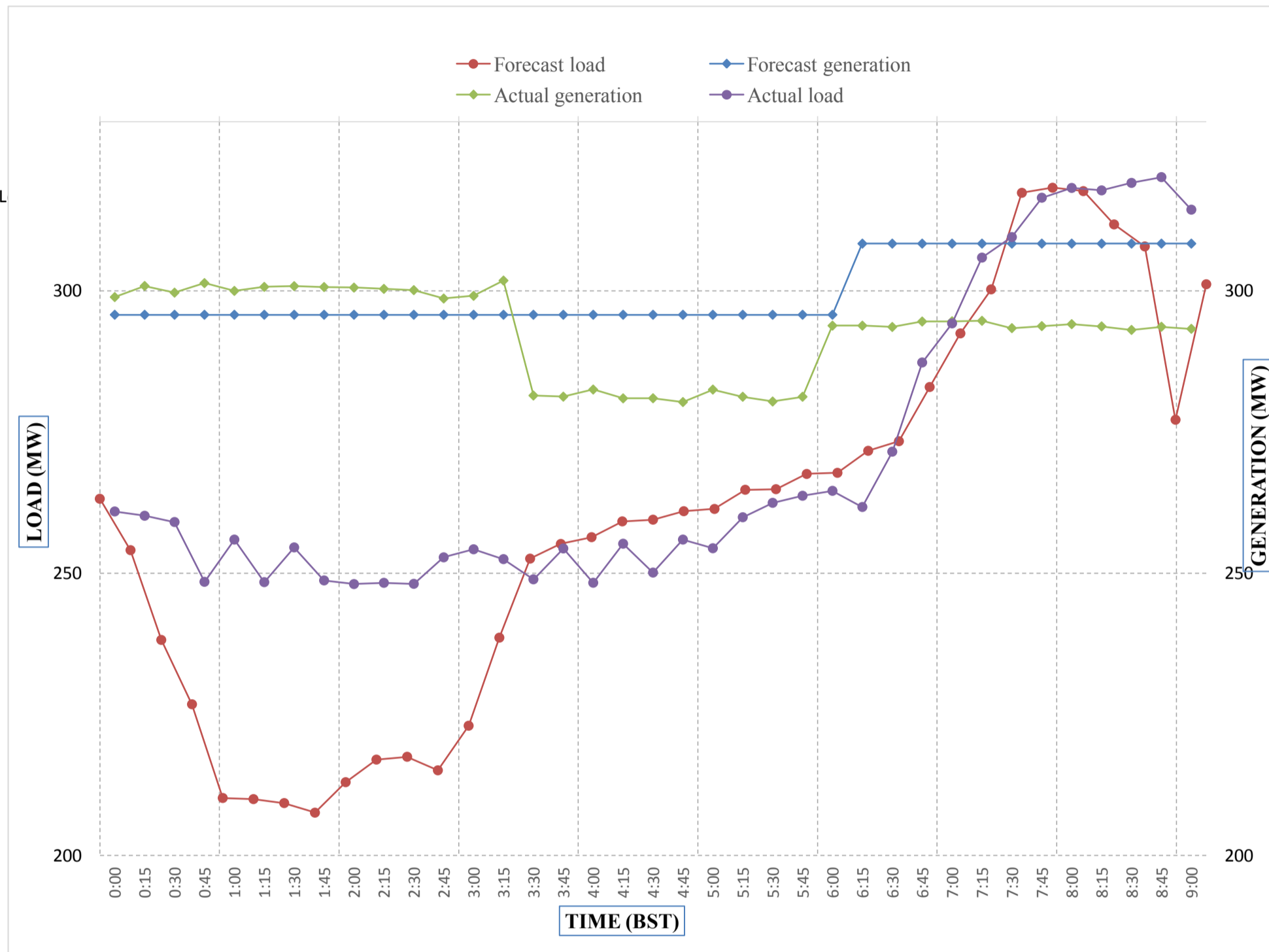
Coincidental peak load of Day(Last year):	
304.78 MW	2-Feb-18
Maximum Load till date:	
362.09	14-Nov-17



Message No.: Enter your message number
 From: Shift In-charge, Control Room

2/2/2018 11:55 2-Feb-18
 2/1/2018 10:47 10:47

Forecast Generation & Load with Actual Generation & Load of Today from 00:00hrs to 09:00hrs(02-Feb-2018).



Yours faithfully
 Karma Choden



འབྲུག་གྲོག་ལེ་ལམ་ལྷན་ཁག་།
Bhutan Power Corporation Ltd.
Bhutan Power System Operator
 Thimphu: Bhutan



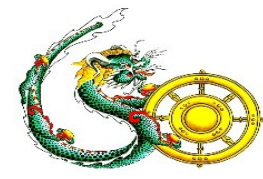
Message No.: Enter your message number **Date:** 2-Feb-18
From: Shift In-charge, Control Room **Time:** 10:47

To
 Managing Director, BPC. Email: gemtsheing@bpc.bt
 Director, O&MD, DGPC. Email: director.umd@drukgreen.com
 General Manager, TD, BPC. Email: ktobgye@bpc.bt
 Advisor, BPC. Email: bharattamang@bpc.bt

Sub: Load Generation Balance Report of Tomorrow (03-Feb-2018).

Hours (BST)	Forecast		Hours (BST)	Forecast	
	Generation	Load		Generation	Load
0:00	293.4	256.4	12:00	293.4	290
0:15	293.4	238.7	12:15	293.4	286.4
0:30	293.4	216.8	12:30	293.4	285.1
0:45	293.4	209.7	12:45	293.4	278.8
1:00	293.4	203.3	13:00	293.4	279.7
1:15	293.4	207.1	13:15	293.4	277.8
1:30	293.4	210.5	13:30	293.4	277.4
1:45	293.4	218.6	13:45	293.4	273.4
2:00	293.4	227.8	14:00	293.4	273.4
2:15	293.4	235.3	14:15	293.4	277.1
2:30	293.4	244.1	14:30	293.4	277.6
2:45	293.4	244.5	14:45	293.4	280.8
3:00	293.4	251.1	15:00	293.4	281.3
3:15	293.4	255.9	15:15	293.4	281.5
3:30	293.4	259.3	15:30	293.4	283.7
3:45	293.4	259.6	15:45	293.4	281.9
4:00	293.4	259.7	16:00	293.4	283.7
4:15	293.4	259.7	16:15	293.4	284.7
4:30	293.4	259.4	16:30	293.4	289.5
4:45	293.4	260.1	16:45	293.4	293.3
5:00	293.4	260.5	17:00	293.4	300
5:15	293.4	263.5	17:15	306	306.5
5:30	293.4	263.9	17:30	306	314.4
6:45	293.4	261.6	17:45	306	319.6
6:00	293.4	262.8	18:00	306	330.3
6:15	306	267.2	18:15	306	338.8
6:30	306	271.2	18:30	306	343.2
6:45	306	281.5	18:45	306	341.2
7:00	306	292.2	19:00	306	340.9
7:15	306	301	19:15	306	335
7:30	306	315.7	19:30	306	333.6
7:45	306	316.9	19:45	306	328.7
8:00	306	315.6	20:00	306	325.2
8:15	306	309.7	20:15	306	323
8:30	306	306.9	20:30	306	320.1
8:45	306	293.3	20:45	306	321.5
9:00	306	277	21:00	306	320.3
9:15	293.4	302.6	21:15	293.4	316.9
9:30	293.4	298.5	21:30	293.4	313.8
9:45	293.4	299.2	21:45	293.4	307.9
10:00	293.4	297.2	22:00	293.4	304.2
10:15	293.4	292.1	22:15	293.4	296.7
10:30	293.4	290.1	22:30	293.4	295.1
10:45	293.4	287	22:45	293.4	290.8
11:00	293.4	289.8	23:00	293.4	289.7
11:15	293.4	291.1	23:15	293.4	282.5
11:30	293.4	291.2	23:30	293.4	285.2
11:45	293.4	290.8	23:45	293.4	282.2

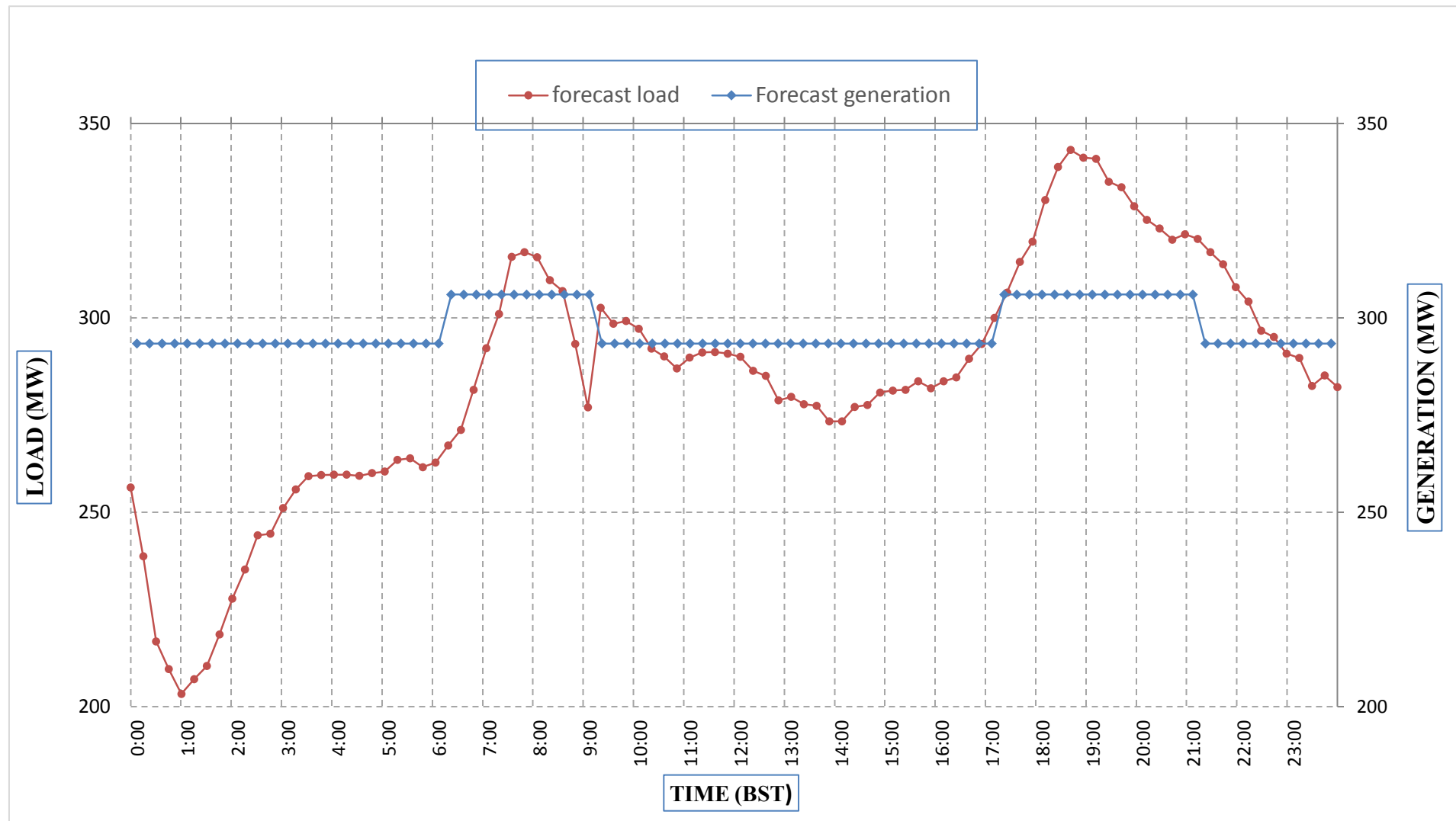
Yours faithfully,
 Karma Choden



Message No.: Enter your message number
 From: Shift In-charge, Control Room

Date: 2-Feb-18
 Time: 10:47

Forecast Generation & Load Forecast for Tomorrow (03-Feb-2018).



Yours faithfully,
 Karma Choden

	MW
Scheduled Peak Generation(03-Feb-2018).	306.00
Forecast Peak Load(03-Feb-2018).	343.20



Bhutan Power Corporation Ltd.
Bhutan Power System Operator
 Thimphu: Bhutan

འབྲུག་རྒྱལ་ཁོ་ལས་འཛིན།



Message No.: Enter your message number
From: Shift In-charge, Control Room

Date: 2-Feb-18
Time: 10:47

To
 Managing Director, BPC. Email: gemtshering@bpc.bt
 Director, O&MD, DGPC. Email: director.umd@drukgreen.com
 General Manager, TD, BPC. Email: ktobgye@bpc.bt
 Advisor, BPC. Email: bharattamang@bpc.bt

Sub: Forecast Generation and Actual Generation of Dagachhu (01-Feb-2018).

Hours (BST)	Actual Frequency	Forecast Generation	Actual Generation	Hours (BST)	Actual Frequency	Forecast Generation	Actual Generation
0:00	49.98	20	19.84	12:00	50.01	20	20.00
0:15	49.99	20	19.82	12:15	50.00	20	20.00
0:30	49.98	20	19.82	12:30	49.98	20	20.01
0:45	49.98	20	19.82	12:45	50.02	20	20.01
1:00	50.00	20	19.84	13:00	50.01	20	20.01
1:15	49.99	20	19.82	13:15	50.06	20	20.01
1:30	50.01	20	19.81	13:30	50.04	20	19.99
1:45	50.03	20	19.82	13:45	49.99	20	20.00
2:00	50.03	20	19.82	14:00	50.01	20	20.00
2:15	50.03	20	19.83	14:15	49.97	20	20.01
2:30	50.01	20	19.83	14:30	49.92	20	20.00
2:45	50.01	20	19.82	14:45	49.95	20	20.16
3:00	50.04	20	19.83	15:00	49.97	20	20.16
3:15	50.02	20	19.84	15:15	50.00	20	20.35
3:30	50.00	20	19.83	15:30	49.96	20	20.34
3:45	50.03	20	19.82	15:45	49.96	20	20.33
4:00	49.99	20	19.83	16:00	49.96	20	20.35
4:15	50.02	20	19.84	16:15	49.93	20	20.35
4:30	49.98	20	19.82	16:30	49.94	20	20.35
4:45	50.01	20	19.80	16:45	49.92	20	20.35
5:00	49.99	20	19.80	17:00	49.96	20	20.36
5:15	49.99	20	19.80	17:15	49.98	20	20.35
5:30	50.01	20	19.89	17:30	49.97	20	20.35
6:00	49.93	20	19.89	17:45	49.97	20	20.37
6:15	49.96	20	19.91	18:00	50.03	20	20.33
6:30	49.93	20	19.91	18:15	49.99	20	20.34
6:45	49.89	20	19.92	18:30	49.97	20	20.35
7:00	49.89	20	19.93	18:45	49.90	20	20.36
7:15	49.97	20	19.90	19:00	49.97	20	20.37
7:30	49.97	20	20.04	19:15	50.03	20	20.35
7:45	49.96	20	20.02	19:30	50.02	20	20.37
8:00	50.03	20	20.01	19:45	50.03	20	20.32
8:15	49.98	20	20.01	20:00	50.03	20	20.35
8:30	50.03	20	20.01	20:15	49.98	20	20.34
8:45	49.98	20	20.02	20:30	50.01	20	20.02
9:00	50.00	20	20.00	20:45	50.04	20	20.04
9:15	49.98	20	20.00	21:00	50.03	20	20.04
9:30	49.97	20	20.01	21:15	50.04	20	20.02
9:45	50.04	20	20.02	21:30	50.04	20	19.53
10:00	50.04	20	20.01	21:45	50.03	20	19.54
10:15	50.02	20	20.01	22:00	50.05	20	19.49
10:30	50.01	20	20.00	22:15	49.93	20	19.53
10:45	50.01	20	20.00	22:30	49.98	20	19.51
11:00	50.03	20	20.01	22:45	50.01	20	19.50
11:15	50.01	20	20.03	23:00	49.98	20	19.51
11:30	50.00	20	20.01	23:15	49.99	20	19.51
11:45	49.97	20	20.01	23:30	50.00	20	19.49
	49.91	20	20.00	23:45	49.99	20	19.49

Yours faithfully,
 Karma Choden



འབྲུག་རྒྱལ་ཁོ་ལས་འཛིན།

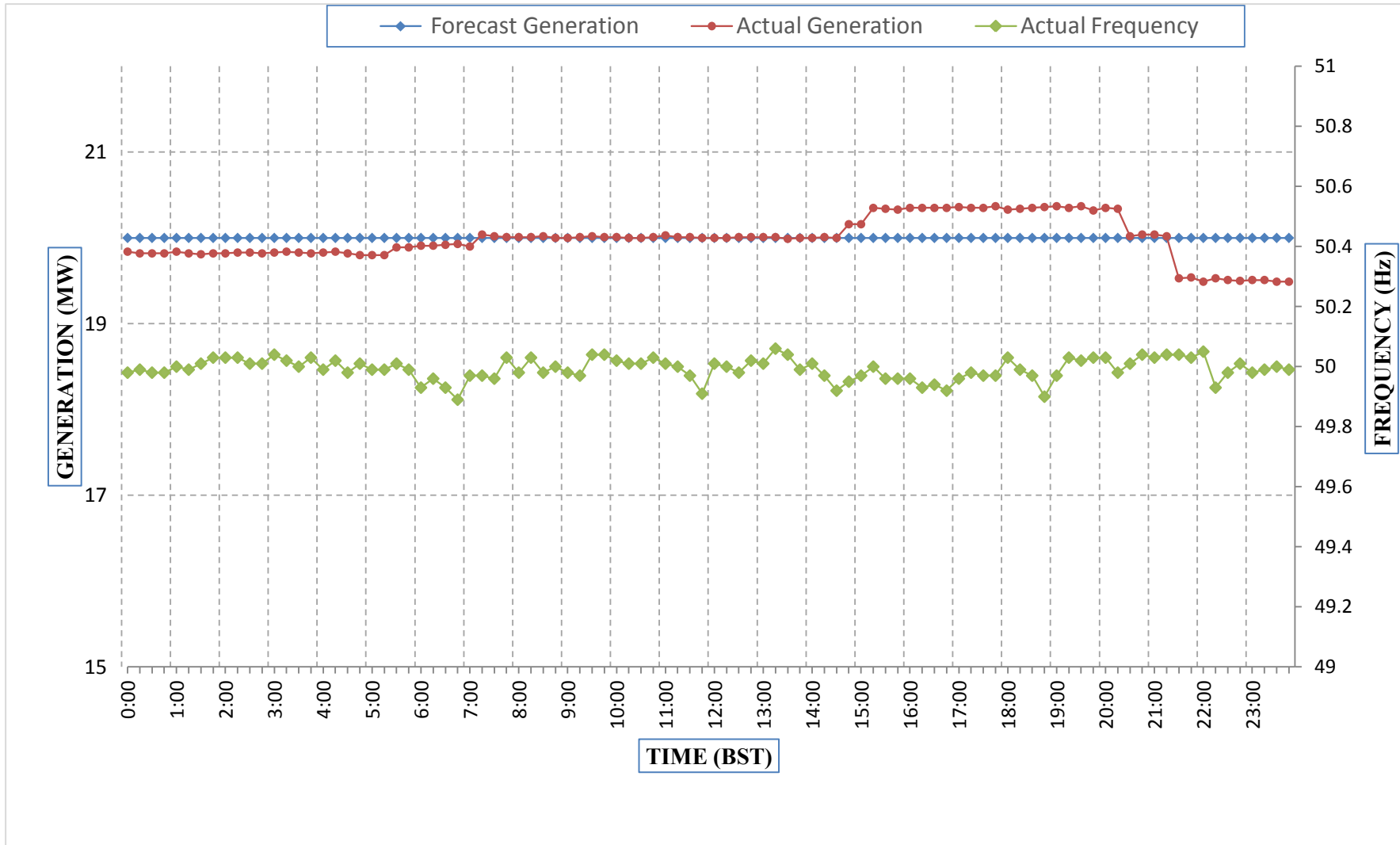
Bhutan Power Corporation Ltd.
Bhutan Power System Operator
Thimphu: Bhutan



Message No.: Enter your message number
From: Shift In-charge, Control Room

Date: 2-Feb-18
Time: 10:47

Forecast Generation & Actual Generation of Dagachhu(01-Feb-2018).



Yours faithfully,
Karma Choden