



འབྲུག་གླིང་མེ་ལམ་འཛིན།

Bhutan Power Corporation Ltd.  
 Bhutan Power System Operator  
 Thimphu: Bhutan



Message No.: Enter your message number  
 From: Shift In-charge, Control Room

Date: 1-Feb-18  
 Time: 10:47

To  
 Managing Director, BPC. Email: gemtshering@bpc.bt  
 Director, O&MD, DGPC. Email: director.omb@drukgreen.com  
 General Manager, TD, BPC. Email: ktobgye@bpc.bt  
 General Manager, DCSD, BPC. Email: sandeeprai@bpc.bt

Sub: **Load Generation Balance Report of Yesterday (31-Jan-2018).**

Hours (BST)	Forecast		Actual		Hours (BST)	Forecast		Actual	
	Generation	Load	Generation	Load		Generation	Load	Generation	Load
0:00	332.8	268.1	319.9	268.9	12:00	312.3	287	263.50	279.64
0:15	322.9	252.9	320.1	259.5	12:15	312.3	285.9	266.50	265.60
0:30	305.4	235.4	319.0	262.1	12:30	312.3	287.4	268.31	256.42
0:45	298	228	320.2	261.0	12:45	312.3	282.6	271.98	252.20
1:00	286.7	216.7	319.1	237.5	13:00	312.3	281.2	270.25	261.07
1:15	289.2	219.2	320.3	233.9	13:15	312.3	276.7	275.37	269.00
1:30	294.2	224.2	319.2	239.0	13:30	312.3	278.2	277.66	264.66
1:45	303.8	233.8	318.0	239.0	13:45	312.3	277.2	277.77	264.90
2:00	312.3	254	319.1	244.1	14:00	312.3	274.7	277.92	255.51
2:15	312.3	269.7	318.7	255.2	14:15	312.3	275.7	278.57	270.91
2:30	312.3	269.3	319.1	253.5	14:30	312.3	275.9	278.30	268.58
2:45	312.3	265.1	318.0	251.9	14:45	312.3	276.5	277.40	275.84
3:00	312.3	264.4	318.1	257.4	15:00	312.3	277.4	276.86	275.89
3:15	312.3	266.1	318.7	257.0	15:15	312.3	278.1	275.10	281.31
3:30	312.3	266.9	318.6	258.6	15:30	312.3	280.5	273.95	280.07
3:45	312.3	267.6	318.2	252.7	15:45	312.3	279	274.05	279.91
4:00	312.3	268.6	318.6	250.1	16:00	312.3	282.2	274.51	280.83
4:15	312.3	267.2	315.8	257.5	16:15	312.3	283.3	276.13	284.84
4:30	312.3	264.8	314.1	258.1	16:30	312.3	286.1	276.29	282.94
4:45	312.3	265.3	313.6	262.6	16:45	312.3	291.7	276.55	279.75
5:00	312.3	269.5	313.8	246.9	17:00	327.9	296.7	277.00	292.19
5:15	312.3	269.4	302.4	253.3	17:15	327.9	304.2	290.87	303.59
5:30	312.3	269.4	303.5	259.6	17:30	327.9	308.5	292.27	311.91
5:45	312.3	269.3	302.3	267.3	17:45	327.9	313.1	291.49	317.88
6:00	327.9	267.1	303.3	276.6	18:00	327.9	325.2	293.24	322.04
6:15	327.9	269.2	313.6	279.9	18:15	327.9	335	291.06	331.93
6:30	327.9	270.4	312.3	280.0	18:30	327.9	336.3	291.58	343.40
6:45	327.9	278.5	303.8	284.0	18:45	327.9	333.5	289.77	344.64
7:00	327.9	289.2	303.5	299.2	19:00	327.9	334	289.74	340.96
7:15	327.9	294.6	301.4	302.5	19:15	327.9	332.4	292.70	337.41
7:30	327.9	303	301.1	309.3	19:30	327.9	328.9	322.28	342.03
7:45	327.9	306.6	300.0	312.2	19:45	327.9	326.2	323.29	336.07
8:00	327.9	308	299.5	314.4	20:00	327.9	321.1	322.52	328.91
8:15	327.9	306.8	299.4	284.1	20:15	327.9	319	321.91	331.08
8:30	327.9	304.9	299.6	300.2	20:30	327.9	318.4	322.77	324.22
8:45	327.9	302.5	299.2	298.4	20:45	327.9	319	322.41	320.23
9:00	313.7	274.3	299.0	298.3	21:00	313.7	320.8	323.49	318.09
9:15	312.3	307.8	279.01	285.03	21:15	312.3	322.1	322.98	316.41
9:30	312.3	302.2	279.48	281.41	21:30	312.3	322.2	322.83	308.03
9:45	312.3	299.9	278.91	295.59	21:45	312.3	316.5	307.01	309.31
10:00	312.3	297.8	279.19	293.30	22:00	312.3	315.3	305.70	294.91
10:15	312.3	293.5	279.74	292.06	22:15	312.3	308.7	305.44	292.55
10:30	312.3	287.4	267.90	287.29	22:30	312.3	303.1	296.97	285.27
10:45	312.3	288.2	267.22	284.95	22:45	312.3	294.4	307.35	280.76
11:00	312.3	287.6	255.36	291.88	23:00	312.3	283.3	307.29	277.76
11:15	312.3	289	330.75	285.00	23:15	312.3	263.2	307.13	275.01
11:30	312.3	291.1	331.21	281.23	23:30	312.3	245.7	306.20	271.16
11:45	312.3	288	264.29	281.25	23:45	301.8	231.8	305.96	267.49

288.39		258.18	
<b>Coincidental peak load of Day(Last year):</b>			
<b>232.57 MW</b>	<b>31-Jan-17</b>		
<b>Maximum Load till date:</b>			
<b>362.09</b>	<b>14-Nov-17</b>		

Yours faithfully  
 Karma Choden



འབྲུག་རྒྱལ་ཁོ་ལས་འཛིན།

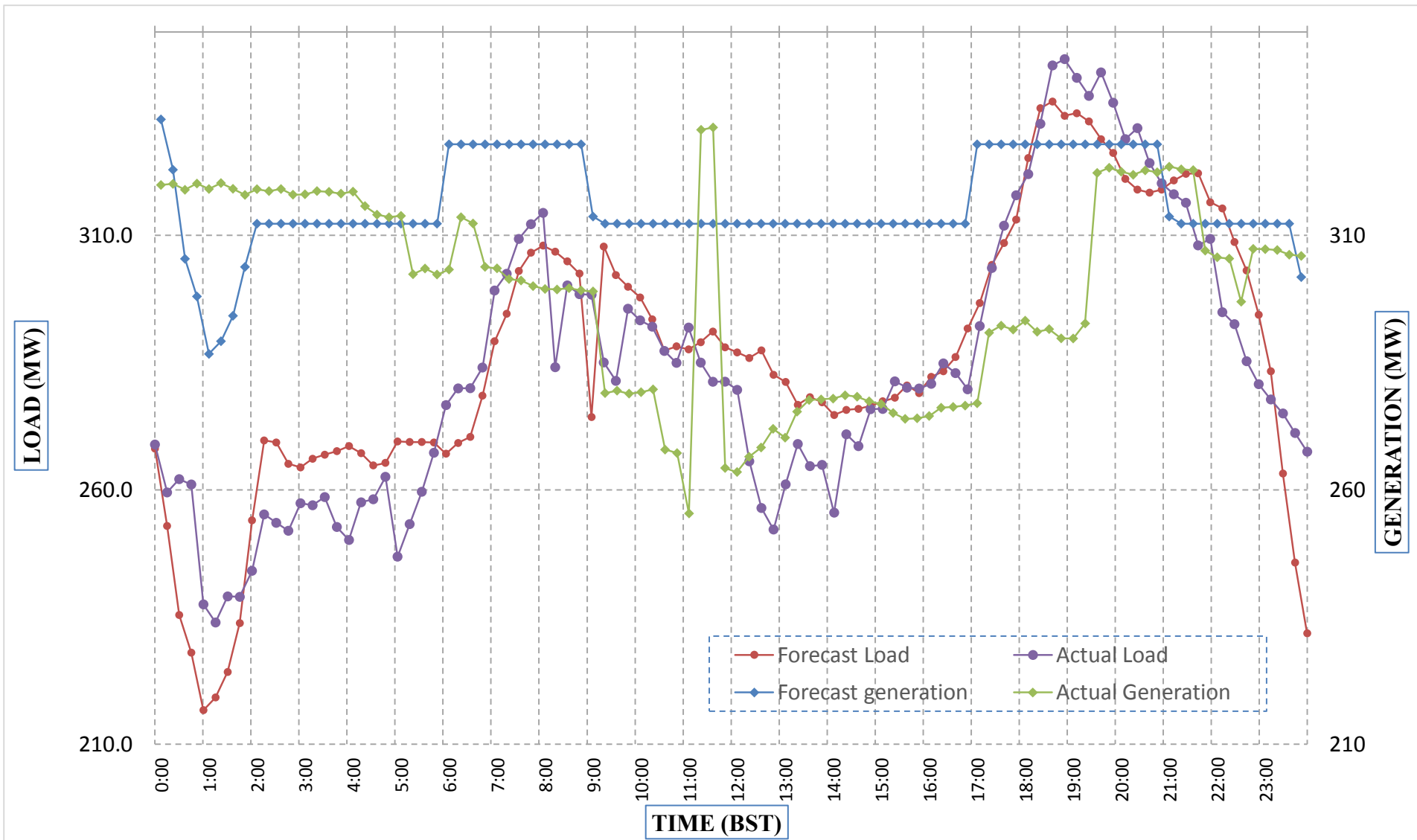
Bhutan Power Corporation Ltd.  
 Bhutan Power System Operator  
 Thimphu: Bhutan



Message No.: Enter your message number  
 From: Shift In-charge, Control Room

Date: 30-Jan-18  
 Time: 11:03

Forecast Generation & Load with Actual Generation & Load (29-Jan-2018).



Yours faithfully,  
 Karma Choden

	MW	Coincidental peak load of Day(Last year):	
Peak Co-incident Generation(29-Jan-2018).	331.21	232.57 MW	31-Jan-17
Peak Co-incident Load(29-Jan-2018).	344.64		
		Maximum Load till date:	
		362.09	14-Nov-17

Telephone: +975-02335631; Fax: +975-02335632; Email: bhutansystemoperator@bpc.bt; www.bpc.bt



འབྲུག་གྲོག་མེ་ལས་འཛིན།

Bhutan Power Corporation Ltd.  
Bhutan Power System Operator  
Thimphu: Bhutan



Message No.: Enter your message number  
From: Shift In-charge, Control Room

Date: 1-Feb-18  
Time: 10:47

To  
Managing Director, BPC. Email: gemtshering@bpc.bt  
Director, O&MD, DGPC. Email: director.omid@drukgreen.com  
General Manager, TD, BPC. Email: thinleygyeltshen@bpc.bt  
General Manager, DCSD, BPC. Email: sandeeprai@bpc.bt

Sub: Load Generation Balance Report of Today (01-Feb-2018).

Hours (BST)	Forecast		Actual	
	Generation	Load	Generation	Load
0:00	346.9	285.5	307.4	261.6
0:15	346.9	281	307.0	264.5
0:30	346.9	278.2	307.0	264.8
0:45	346.9	274.9	306.3	259.2
1:00	346.9	272.3	307.0	257.2
1:15	346.9	273	308.2	260.0
1:30	346.9	273	306.9	255.9
1:45	346.9	266.1	306.3	258.0
2:00	346.9	270.2	306.4	255.8
2:15	346.9	267.9	305.8	254.3
2:30	346.9	270.3	305.4	252.5
2:45	346.9	268.6	305.2	252.2
3:00	346.9	268	305.8	248.8
3:15	346.9	265.7	308.1	250.0
3:30	346.9	267.4	306.6	252.3
3:45	346.9	264.5	305.2	251.8
4:00	346.9	266.9	305.9	253.1
4:15	346.9	267.9	306.9	252.4
4:30	346.9	269.2	307.2	254.9
4:45	346.9	271.2	306.7	252.2
5:00	346.9	271.4	306.1	257.4
5:15	346.9	273.6	305.3	258.3
5:30	346.9	276.8	305.6	259.7
5:45	346.9	277.9	305.3	255.4
6:00	346.9	281	305.3	246.2
6:15	346.9	284.7	304.8	251.9
6:30	346.9	294.3	318.4	259.6
6:45	346.9	298	319.1	277.8
7:00	346.9	306.6	318.1	292.7
7:15	346.9	312.2	318.3	300.9
7:30	346.9	313.5	317.1	307.9
7:45	346.9	314.2	316.7	311.2
8:00	346.9	314.2	316.7	310.5
8:15	346.9	318.1	317.6	303.0
8:30	346.9	316.9	317.9	302.5
8:45	346.9	309.3	317.9	296.2
9:00	346.9	312.2	317.8	291.8

Coincidental peak load of Day(Last year):	
297.2 MW	1-Feb-18
Maximum Load till date:	
362.09	14-Nov-17

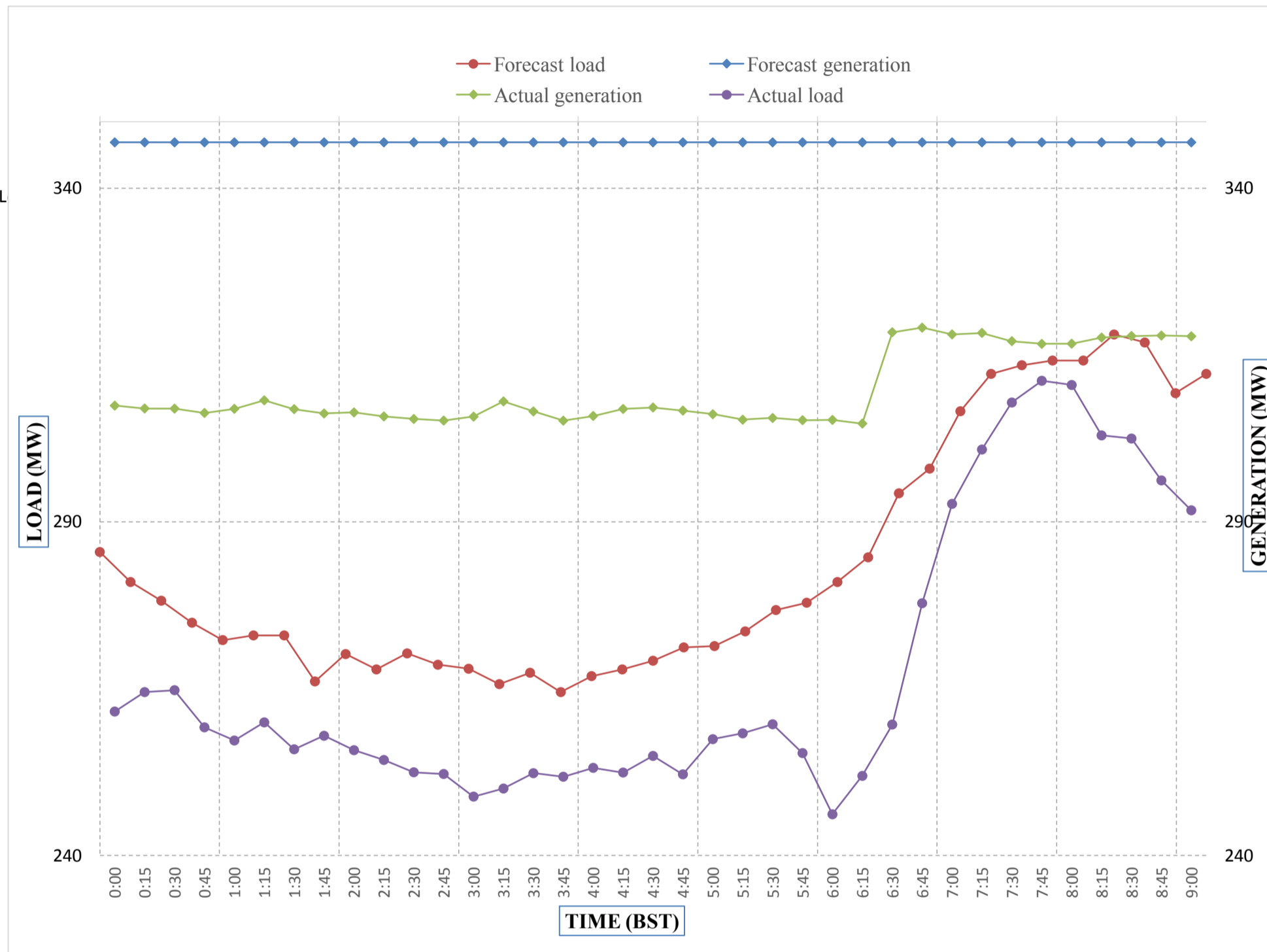
Yours faithfully,  
Karma Choden



Message No.: Enter your message number  
 From: Shift In-charge, Control Room

2/1/2018 10:47 1-Feb-18  
 2/1/2018 10:47 10:47

Forecast Generation & Load with Actual Generation & Load of Today from 00:00hrs to 09:00hrs(01-Feb-2018).



Yours faithfully  
 Karma Choden



འབྲུག་གྲོག་ལེ་ལམ་ལྷན་ཁག་།  
**Bhutan Power Corporation Ltd.**  
**Bhutan Power System Operator**  
 Thimphu: Bhutan



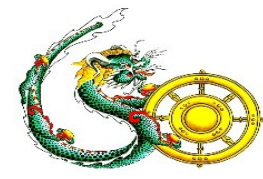
**Message No.:** Enter your message number **Date:** 1-Feb-18  
**From:** Shift In-charge, Control Room **Time:** 10:47

**To**  
 Managing Director, BPC. Email: gemtshering@bpc.bt  
 Director, O&MD, DGPC. Email: director.umd@drukgreen.com  
 General Manager, TD, BPC. Email: ktobgye@bpc.bt  
 Advisor, BPC. Email: bharattamang@bpc.bt

**Sub:** Load Generation Balance Report of Tomorrow (02-Feb-2018).

Hours (BST)	Forecast		Hours (BST)	Forecast	
	Generation	Load		Generation	Load
0:00	295.8	263.2	12:00	295.8	289.7
0:15	295.8	254.1	12:15	295.8	283.6
0:30	295.8	238.2	12:30	295.8	283
0:45	295.8	226.8	12:45	295.8	279.5
1:00	295.8	210.2	13:00	295.8	280.4
1:15	295.8	210	13:15	295.8	277.2
1:30	295.8	209.3	13:30	295.8	278.6
1:45	295.8	207.6	13:45	295.8	272.9
2:00	295.8	213	14:00	295.8	273.7
2:15	295.8	217	14:15	295.8	278.9
2:30	295.8	217.5	14:30	295.8	278
2:45	295.8	215.1	14:45	295.8	280.1
3:00	295.8	223	15:00	295.8	280.2
3:15	295.8	238.6	15:15	295.8	281.3
3:30	295.8	252.6	15:30	295.8	283.4
3:45	295.8	255.2	15:45	295.8	280.9
4:00	295.8	256.4	16:00	295.8	283.1
4:15	295.8	259.2	16:15	295.8	283.7
4:30	295.8	259.5	16:30	295.8	288.4
4:45	295.8	261	16:45	295.8	292.9
5:00	295.8	261.4	17:00	295.8	301.3
5:15	295.8	264.8	17:15	308.4	308.7
5:30	295.8	264.9	17:30	308.4	313.6
6:45	295.8	267.6	17:45	308.4	318.9
6:00	295.8	267.8	18:00	308.4	328.7
6:15	308.4	271.7	18:15	308.4	337.6
6:30	308.4	273.4	18:30	308.4	342.1
6:45	308.4	283	18:45	308.4	339.3
7:00	308.4	292.5	19:00	308.4	339.3
7:15	308.4	300.3	19:15	308.4	334.7
7:30	308.4	317.4	19:30	308.4	333.1
7:45	308.4	318.3	19:45	308.4	330.5
8:00	308.4	317.7	20:00	308.4	325.2
8:15	308.4	311.8	20:15	308.4	323.9
8:30	308.4	307.9	20:30	308.4	321.1
8:45	308.4	277.2	20:45	308.4	321
9:00	308.4	301.2	21:00	308.4	320.2
9:15	295.8	304	21:15	295.8	318.9
9:30	295.8	298.9	21:30	295.8	317.7
9:45	295.8	300.7	21:45	295.8	311.7
10:00	295.8	299.6	22:00	295.8	310.3
10:15	295.8	293.4	22:15	295.8	301.9
10:30	295.8	290	22:30	295.8	300.8
10:45	295.8	286.7	22:45	295.8	296.3
11:00	295.8	290.8	23:00	295.8	296.2
11:15	295.8	290.2	23:15	295.8	285.7
11:30	295.8	291.2	23:30	295.8	282.3
11:45	295.8	289.9	23:45	295.8	275.4

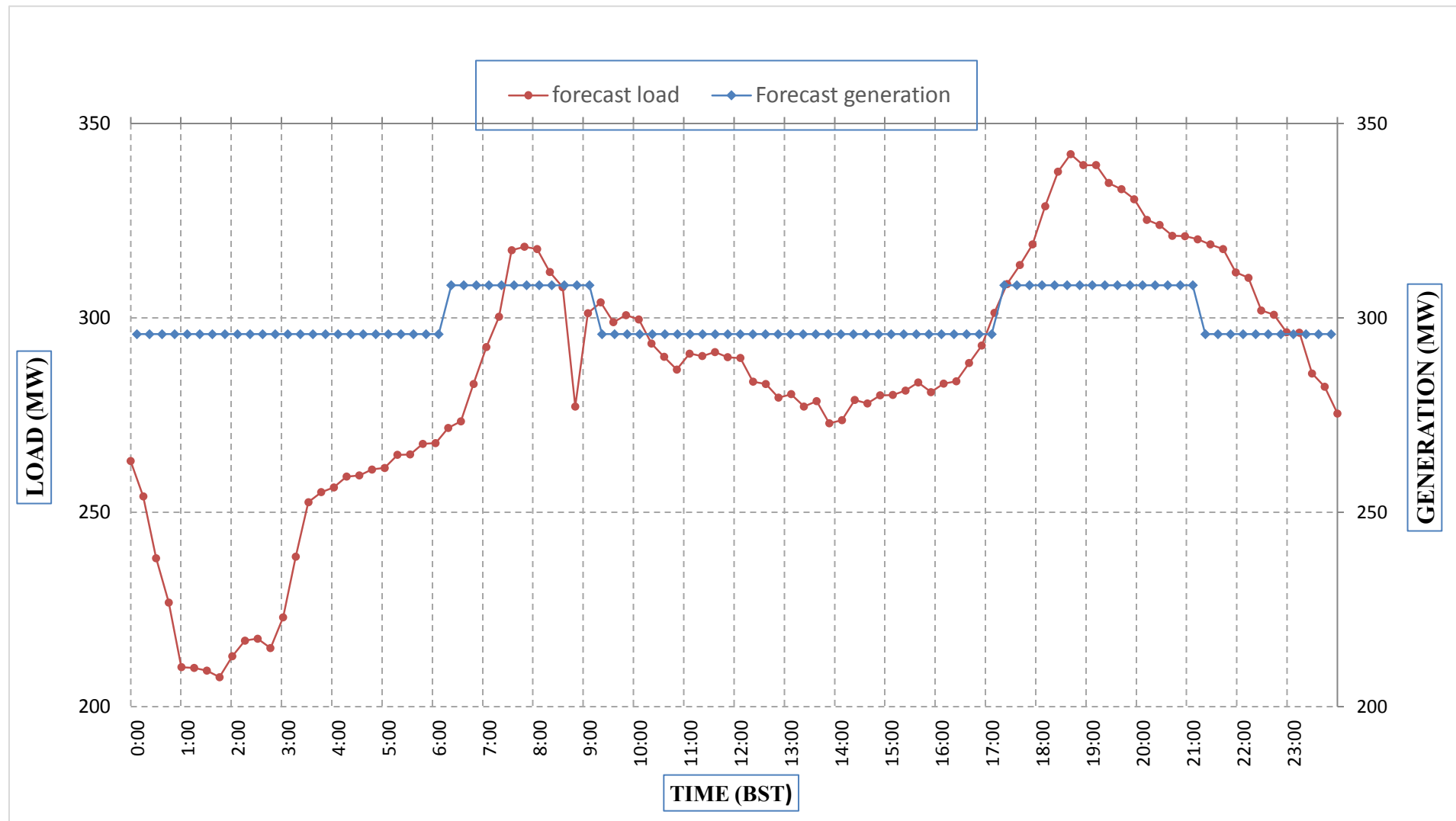
Yours faithfully,  
 Karma Choden



Message No.: Enter your message number  
 From: Shift In-charge, Control Room

Date: 1-Feb-18  
 Time: 10:47

**Forecast Generation & Load Forecast for Tomorrow (02-Feb-2018).**



Yours faithfully,  
 Karma Choden

	MW
Scheduled Peak Generation(02-Feb-2018).	308.40
Forecast Peak Load(02-Feb-2018).	342.10



**Bhutan Power Corporation Ltd.**  
**Bhutan Power System Operator**  
 Thimphu: Bhutan

འབྲུག་རྒྱལ་ཁོ་ལས་འཛིན།



**Message No.:** Enter your message number  
**From:** Shift In-charge, Control Room

**Date:** 1-Feb-18  
**Time:** 10:47

**To**  
 Managing Director, BPC. Email: gemtshering@bpc.bt  
 Director, O&MD, DGPC. Email: director.umd@drukgreen.com  
 General Manager, TD, BPC. Email: ktobgye@bpc.bt  
 Advisor, BPC. Email: bharattamang@bpc.bt

**Sub:** Forecast Generation and Actual Generation of Dagachhu (31-Jan-2018).

Hours (BST)	Actual Frequency	Forecast Generation	Actual Generation	Hours (BST)	Actual Frequency	Forecast Generation	Actual Generation
0:00	49.91	20	19.71	12:00	50.02	20	20.28
0:15	49.95	20	19.72	12:15	49.97	20	20.29
0:30	49.96	20	19.74	12:30	50.02	20	20.29
0:45	49.99	20	19.71	12:45	50.04	20	20.29
1:00	50.00	20	19.71	13:00	50.06	20	20.29
1:15	49.99	20	19.73	13:15	50.06	20	20.02
1:30	50.00	20	19.73	13:30	49.98	20	20.01
1:45	50.00	20	20.06	13:45	50.00	20	20.02
2:00	49.97	20	20.04	14:00	50.01	20	20.00
2:15	50.00	20	20.03	14:15	49.95	20	20.04
2:30	49.97	20	20.04	14:30	49.87	20	20.00
2:45	49.99	20	20.01	14:45	49.91	20	20.03
3:00	49.99	20	20.03	15:00	50.00	20	20.02
3:15	49.97	20	20.04	15:15	49.95	20	20.03
3:30	49.96	20	20.04	15:30	49.93	20	20.02
3:45	50.01	20	20.10	15:45	49.93	20	20.01
4:00	49.96	20	20.30	16:00	49.96	20	20.01
4:15	49.96	20	20.28	16:15	50.02	20	20.02
4:30	49.93	20	20.30	16:30	49.98	20	20.01
4:45	49.96	20	20.02	16:45	49.96	20	19.99
5:00	49.96	20	20.04	17:00	50.04	20	19.99
5:15	49.96	20	20.01	17:15	50.03	20	20.01
5:30	49.91	20	20.04	17:30	49.98	20	20.00
6:45	49.96	20	20.03	17:45	49.98	20	20.02
6:00	49.90	20	20.03	18:00	50.06	20	20.01
6:15	49.91	20	20.03	18:15	50.05	20	20.00
6:30	49.91	20	20.01	18:30	49.99	20	20.06
6:45	49.88	20	20.02	18:45	49.95	20	20.04
7:00	49.92	20	20.03	19:00	49.95	20	20.02
7:15	49.98	20	20.03	19:15	50.00	20	20.02
7:30	49.95	20	20.28	19:30	50.01	20	20.02
7:45	50.01	20	20.30	19:45	50.05	20	20.03
8:00	50.01	20	20.28	20:00	49.98	20	20.01
8:15	49.99	20	20.29	20:15	49.94	20	20.02
8:30	49.96	20	20.29	20:30	49.86	20	20.03
8:45	49.97	20	20.31	20:45	49.79	20	20.01
9:00	49.92	20	20.28	21:00	49.88	20	20.02
9:15	49.94	20	20.28	21:15	49.90	20	20.01
9:30	50.01	20	20.29	21:30	50.04	20	20.03
9:45	49.99	20	20.29	21:45	50.09	20	20.04
10:00	49.94	20	20.29	22:00	50.19	20	20.00
10:15	49.95	20	20.30	22:15	50.02	20	20.00
10:30	49.97	20	20.28	22:30	50.08	20	20.00
10:45	50.03	20	20.29	22:45	50.03	20	20.04
11:00	50.00	20	20.29	23:00	50.05	20	20.01
11:15	49.98	20	20.29	23:15	50.04	20	19.82
11:30	49.98	20	20.29	23:30	49.97	20	19.84
11:45	49.91	20	20.30	23:45	49.99	20	19.82

Yours faithfully,  
 Karma Choden



འབྲུག་གྲོག་མེ་ལས་འཛིན།

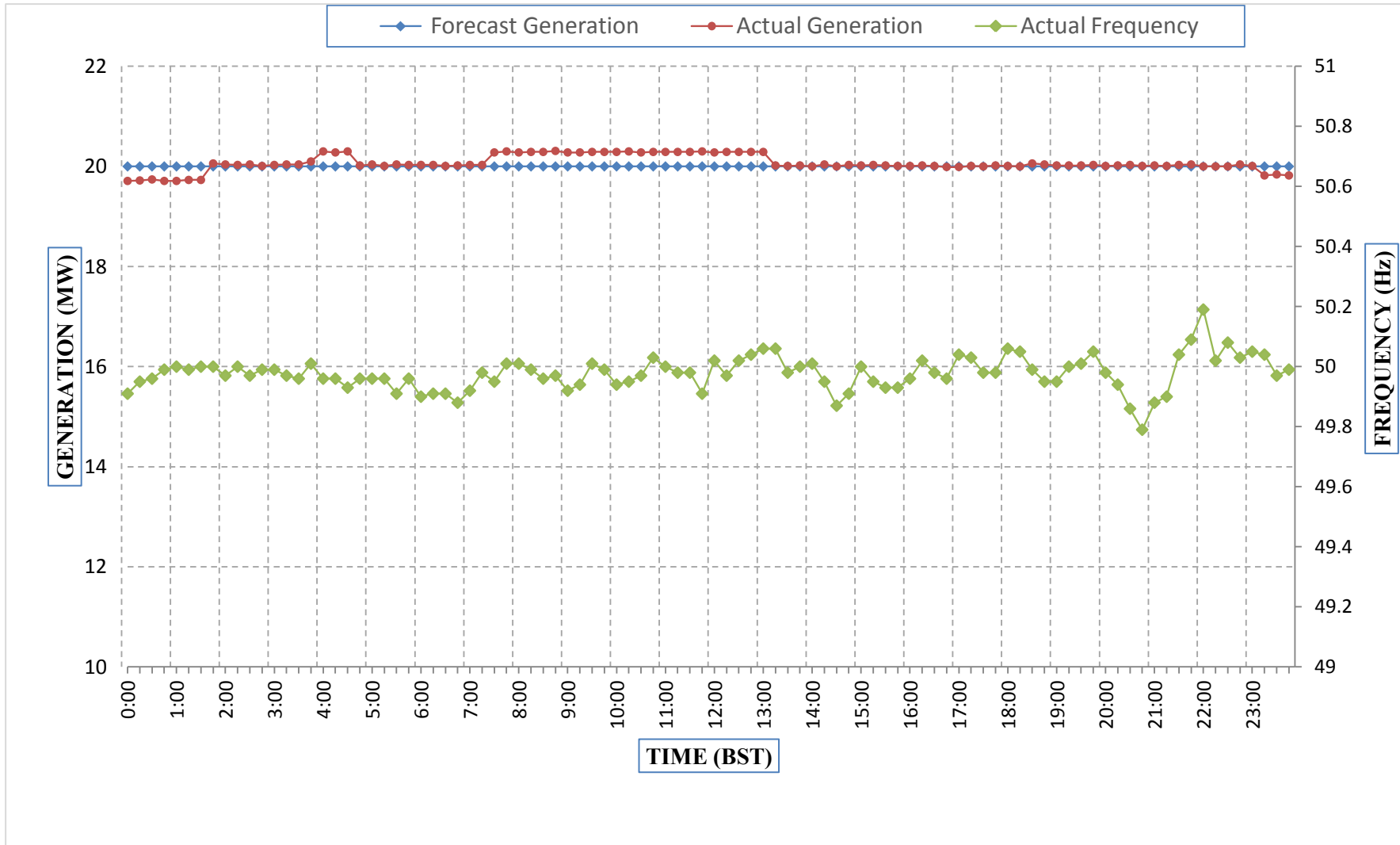
Bhutan Power Corporation Ltd.  
Bhutan Power System Operator  
Thimphu: Bhutan



Message No.: Enter your message number  
From: Shift In-charge, Control Room

Date: 1-Feb-18  
Time: 10:47

Forecast Generation & Actual Generation of Dagachhu(31-Jan-2018).



Yours faithfully,  
Karma Choden