



འབྲུག་གླིང་གི་ལས་འཛིན།

Bhutan Power Corporation Ltd.
Bhutan Power System Operator
Thimphu: Bhutan



Message No.: Enter your message number
From: Shift In-charge, Control Room

Date: 27-Jan-18
Time: 9:36

To
Managing Director, BPC. Email: gemtshering@bpc.bt
Director, O&MD, DGPC. Email: director.omid@drukgreen.com
General Manager, TD, BPC. Email: ktobgye@bpc.bt
General Manager, DCSD, BPC. Email: sandeeprai@bpc.bt

Sub: **Load Generation Balance Report of Yesterday (26-Jan-2018).**

Hours (BST)	Forecast		Actual		Hours (BST)	Forecast		Actual	
	Generation	Load	Generation	Load		Generation	Load	Generation	Load
0:00	294.6	254.4			12:00	294.6	289	308.55	289.16
0:15	294.6	245.2	310.6	261.4	12:15	294.6	291.1	308.41	285.70
0:30	294.6	231.9	311.7	252.8	12:30	294.6	294.4	307.09	272.73
0:45	294.6	227	310.0	244.9	12:45	294.6	289.6	307.91	271.02
1:00	294.6	206.3	310.8	241.8	13:00	294.6	280.1	306.91	270.63
1:15	294.6	204.7	310.2	239.6	13:15	294.6	274	306.86	268.70
1:30	294.6	204	310.3	245.2	13:30	294.6	279.2	307.30	280.65
1:45	294.6	206.8	309.7	245.6	13:45	294.6	279.6	308.78	279.16
2:00	294.6	215.4	308.8	249.7	14:00	294.6	277.9	307.40	279.70
2:15	294.6	216.7	309.2	245.3	14:15	294.6	280.3	329.13	276.77
2:30	294.6	228	310.8	244.1	14:30	294.6	276.8	326.27	280.77
2:45	294.6	229.7	309.6	246.6	14:45	294.6	277.5	326.69	278.05
3:00	294.6	238.2	310.5	246.5	15:00	294.6	283		
3:15	294.6	246.4	309.2	243.9	15:15	294.6	281	326.20	277.54
3:30	294.6	258.8	310.2	245.9	15:30	294.6	281.9	328.07	280.06
3:45	294.6	267.5			15:45	294.6	277.5	327.13	279.00
4:00	294.6	268.2	309.2	247.5	16:00	294.6	277.2	327.30	281.63
4:15	294.6	267.6	310.1	246.8	16:15	294.6	278.8	326.96	280.72
4:30	294.6	273.2	310.1	248.2	16:30	294.6	278.5	326.70	286.47
4:45	294.6	267	310.2	230.1	16:45	294.6	287.4	327.80	288.95
5:00	294.6	268.4	310.1	247.7	17:00	294.6	292.5	329.27	292.25
5:15	294.6	270.6	310.1	248.1	17:15	310.6	298	329.34	296.18
5:30	294.6	272.5	308.8	255.6	17:30	310.6	310	343.66	301.91
5:45	294.6	273	306.9	256.0	17:45	310.6	311.8	344.14	310.41
6:00	295.7	275.3	306.4	261.5	18:00	310.6	323.1	344.25	317.28
6:15	310.6	279.3	306.3	259.5	18:15	310.6	331.7	344.63	328.60
6:30	310.6	282.2	319.9	265.6	18:30	310.6	332.1	345.26	332.30
6:45	310.6	290.5	318.8	265.0	18:45	310.6	330.4		
7:00	310.6	302.8	320.4	278.8	19:00	310.6	330.1	343.99	335.29
7:15	310.6	307.1	320.5	290.9	19:15	310.6	327.8	344.03	335.54
7:30	310.6	320.9			19:30	310.6	324.6	343.61	329.02
7:45	310.6	317.9	319.3	289.5	19:45	310.6	325.1	343.88	327.86
8:00	310.6	313.3	318.9	299.8	20:00	310.6	326	344.39	323.66
8:15	310.6	303.4	318.6	299.8	20:15	310.6	322.3	342.91	322.83
8:30	310.6	279.3	314.1	299.9	20:30	310.6	316.7	343.91	321.70
8:45	310.6	246.1	315.1	297.1	20:45	310.6	316	344.71	315.77
9:00	310.6	276.2	314.8	297.1	21:00	310.6	313.6	343.21	309.15
9:15	294.6	311.1	313.41	296.44	21:15	294.6	323.3	329.33	306.59
9:30	294.6	305.3	304.28	296.60	21:30	294.6	315.3	328.11	301.33
9:45	294.6	299.9	302.90	296.00	21:45	294.6	300.1	328.32	289.73
10:00	294.6	297.9	302.88	294.88	22:00	294.6	293.4	329.05	284.44
10:15	294.6	287.5	304.83	298.51	22:15	294.6	288.2	329.04	275.33
10:30	294.6	288.1	302.95	291.59	22:30	294.6	285.7		
10:45	294.6	294.1	303.34	289.84	22:45	294.6	283.9	328.92	272.13
11:00	294.6	292	302.98	288.08	23:00	294.6	279.7	313.41	255.52
11:15	294.6	293.1			23:15	294.6	274.6	329.65	272.40
11:30	294.6	297.5	304.76	287.59	23:30	294.6	272.5	329.61	266.26
11:45	294.6	293.2	306.17	287.37	23:45	294.6	265.7	329.09	263.94

Yours faithfully
Phub Zam

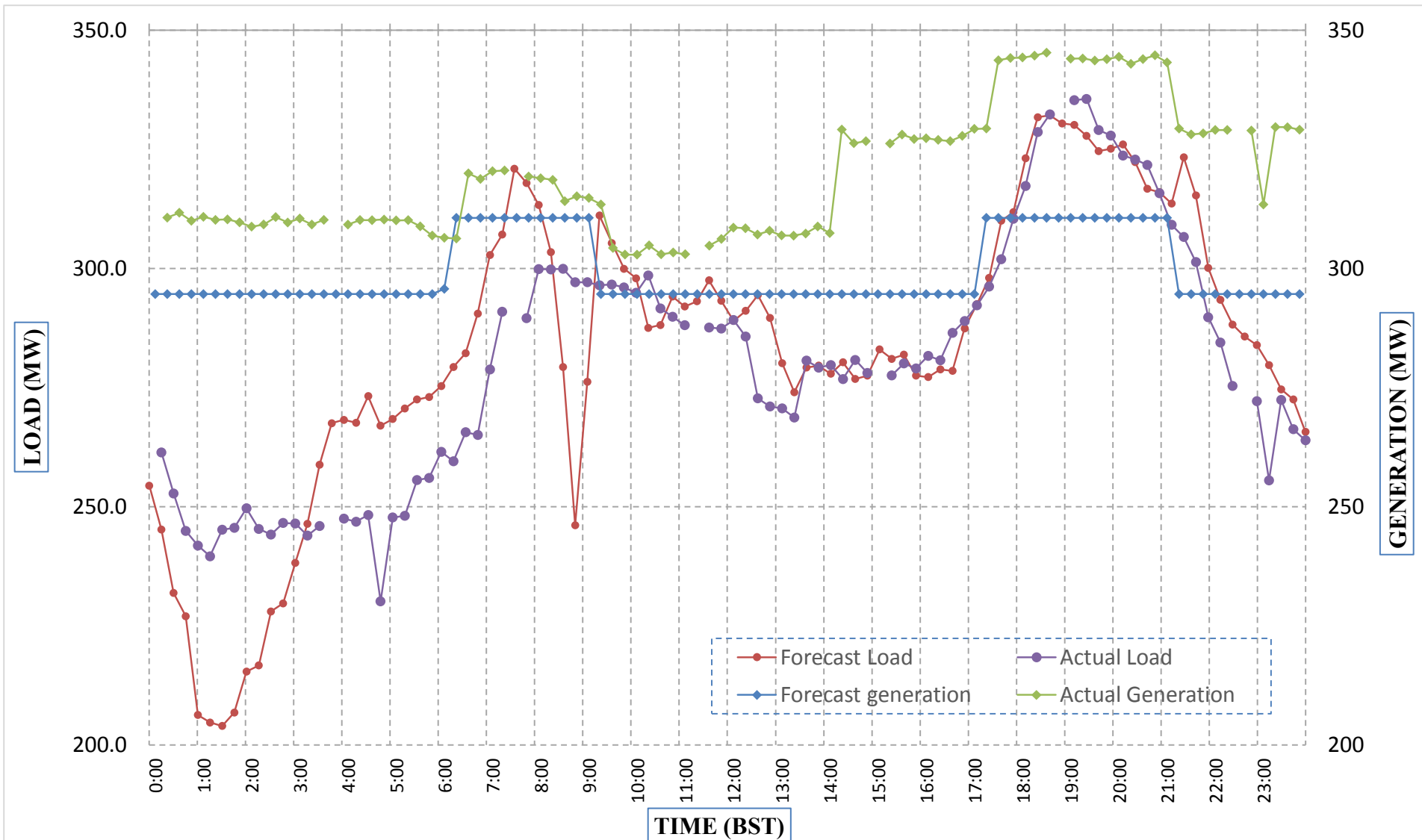
Coincidental peak load of Day(Last year):	
241.25	26-Jan-17
Maximum Load till date:	
362.09	14-Nov-17



Message No.: Enter your message number
From: Shift In-charge, Control Room

Date: 27-Jan-18
Time: 9:36

Forecast Generation & Load with Actual Generation & Load (26-Jan-2018).



Yours faithfully,
Phub Zam

	MW	Coincidental peak load of Day(Last year):	
Peak Co-incident Generation(26-Jan-2018).	345.26	241.25	26-Jan-17
Peak Co-incident Load(26-Jan-2018).	335.54		
		Maximum Load till date:	
		362.09	14-Nov-17

Telephone: +975-02335631; Fax: +975-02335632; Email: bhutansystemoperator@bpc.bt; www.bpc.bt

NOTE: some datas are missing



འབྲུག་གློག་ལེ་ལས་འཛིན།

Bhutan Power Corporation Ltd.
Bhutan Power System Operator
Thimphu: Bhutan



Message No.: Enter your message number
From: Shift In-charge, Control Room

Date: 27-Jan-18
Time: 9:36

To
Managing Director, BPC. Email: gemtshering@bpc.bt
Director, O&MD, DGPC. Email: director.umd@drukgreen.com
General Manager, TD, BPC. Email: thinleygyeltshen@bpc.bt
General Manager, DCSD, BPC. Email: sandeeprai@bpc.bt

Sub: Load Generation Balance Report of Today (27-Jan-2018).

Hours (BST)	Forecast		Actual	
	Generation	Load	Generation	Load
0:00	296.3	243.3		
0:15	296.3	226.2	328.6	257.9
0:30	296.3	223.7	329.3	254.3
0:45	296.3	223.2	328.0	245.5
1:00	296.3	214.4	326.9	262.9
1:15	296.3	223.5	328.3	259.3
1:30	296.3	227.4	327.9	260.8
1:45	296.3	246.6	328.3	262.0
2:00	296.3	253.5	328.0	263.3
2:15	296.3	251.3	327.0	260.1
2:30	296.3	254.4	317.5	260.3
2:45	296.3	256	319.7	259.4
3:00	296.3	255	319.5	255.3
3:15	296.3	258.2	317.5	256.2
3:30	296.3	260.9	318.0	251.8
3:45	296.3	260.7		
4:00	296.3	263.1	318.5	257.8
4:15	296.3	260.9	318.9	257.6
4:30	296.3	263.6	317.7	259.7
4:45	296.3	260.6	317.6	252.8
5:00	296.3	261.8	319.6	255.1
5:15	296.3	263.2	320.0	256.6
5:30	296.3	264.9	319.6	257.1
5:45	296.3	265.7	319.0	261.0
6:00	310.5	266.9	319.0	263.6
6:15	310.5	273.2	321.0	270.1
6:30	310.5	276.8	318.5	273.5
6:45	310.5	284.2	319.8	282.8
7:00	310.5	294.7	320.2	293.0
7:15	310.5	299.7	313.7	307.3
7:30	310.5	310.9		
7:45	310.5	310.6	313.3	316.6
8:00	310.5	308.5	312.6	316.7
8:15	310.5	306	312.4	323.7
8:30	310.5	304.7	313.3	324.6
8:45	310.5	293.3	326.4	311.2
9:00	310.5	254.6	326.4	309.5

Yours faithfully,
Phub Zam

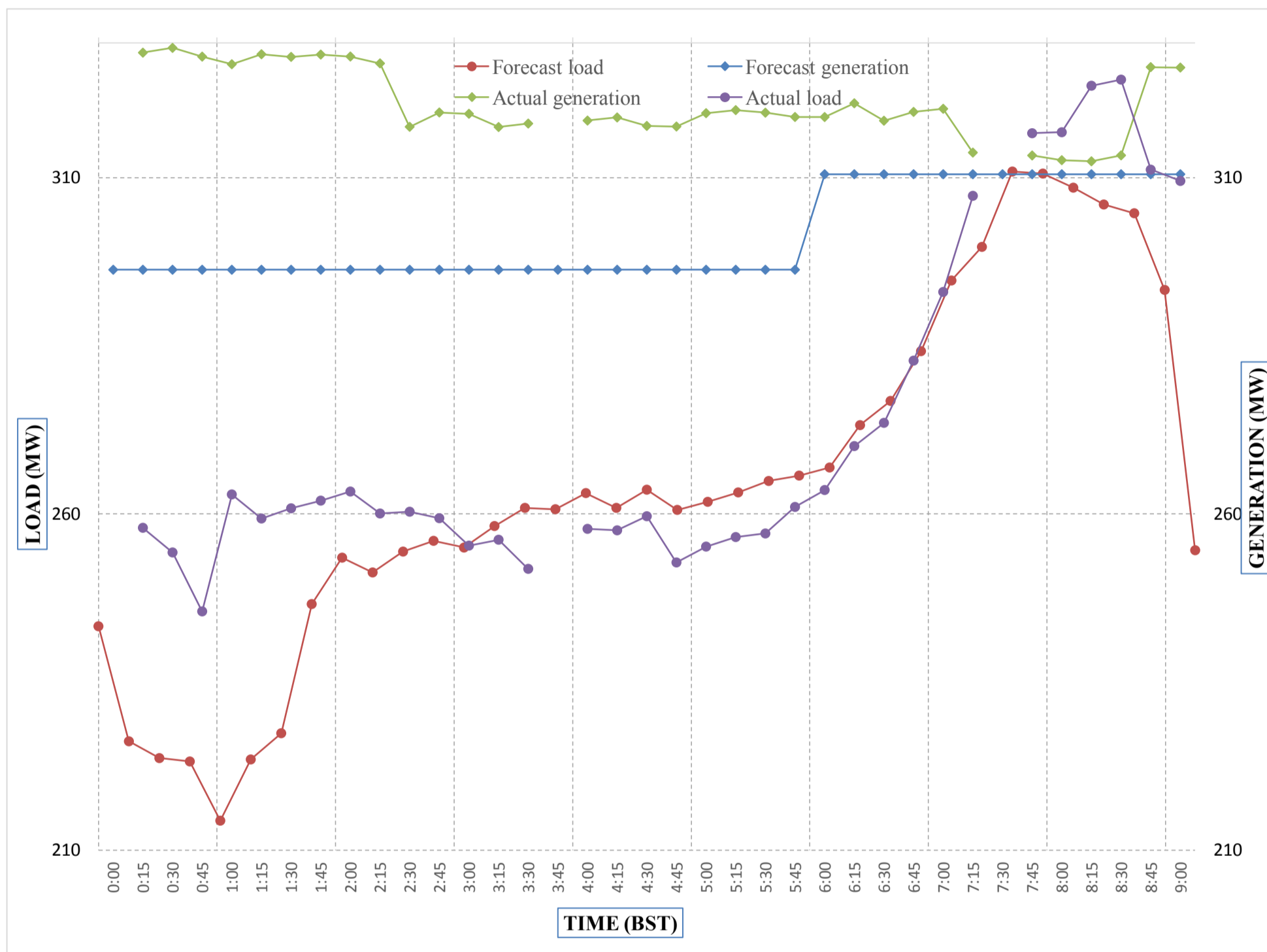
Coincidental peak load of Day(Last year):	
272.62	27-Jan-18
Maximum Load till date:	
362.09	14-Nov-17



Message No.: Enter your message number
 From: Shift In-charge, Control Room

Date: 27-Jan-18
 Time: 9:36

Forecast Generation & Load with Actual Generation & Load of Today from 00:00hrs to 09:00hrs(27-Jan-2018).



NOTE: some datas are missing

Yours faithfully
 Phub Zam



འབྲུག་གྲོག་ལེན་ལྷན་ཁག་ལཱ་བློན་པོ།
Bhutan Power Corporation Ltd.
Bhutan Power System Operator
 Thimphu: Bhutan



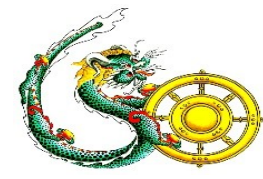
Message No.: Enter your message number **Date:** 27-Jan-18
From: Shift In-charge, Control Room **Time:** 9:36

To
 Managing Director, BPC. Email: gemtshering@bpc.bt
 Director, O&MD, DGPC. Email: director.umd@drukgreen.com
 General Manager, TD, BPC. Email: ktobgye@bpc.bt
 Advisor, BPC. Email: bharattamang@bpc.bt

Sub: Load Generation Balance Report of Tomorrow (28-Jan-2018).

Hours (BST)	Forecast		Hours (BST)	Forecast	
	Generation	Load		Generation	Load
0:00	296.8	226.1	12:00	296.8	283.2
0:15	296.8	220.7	12:15	296.8	282.9
0:30	296.8	220.9	12:30	296.8	287.8
0:45	296.8	227.3	12:45	296.8	283.3
1:00	296.8	229.2	13:00	296.8	278.4
1:15	296.8	241.6	13:15	296.8	274.5
1:30	296.8	246.5	13:30	296.8	277.4
1:45	296.8	251.2	13:45	296.8	277.8
2:00	296.8	255.6	14:00	296.8	276.9
2:15	296.8	253.4	14:15	296.8	277.4
2:30	296.8	254.1	14:30	296.8	274.8
2:45	296.8	253.9	14:45	296.8	275.8
3:00	296.8	252.6	15:00	296.8	278.2
3:15	296.8	255	15:15	296.8	278.3
3:30	296.8	257.8	15:30	296.8	280.9
3:45	296.8	257.2	15:45	296.8	280.1
4:00	296.8	259.3	16:00	296.8	280.6
4:15	296.8	258.3	16:15	296.8	283.9
4:30	296.8	258.6	16:30	296.8	284.6
4:45	296.8	257.1	16:45	296.8	293.3
5:00	296.8	258.8	17:00	296.8	297.3
5:15	296.8	261.7	17:15	310.9	303.5
5:30	296.8	263.1	17:30	310.9	310.3
6:45	296.8	264.3	17:45	310.9	314.1
6:00	297.1	266.2	18:00	310.9	326.6
6:15	310.9	270.1	18:15	310.9	334
6:30	310.9	273.2	18:30	310.9	336.7
6:45	310.9	280.4	18:45	310.9	334.1
7:00	310.9	291	19:00	310.9	334.3
7:15	310.9	297.3	19:15	310.9	331.2
7:30	310.9	306.1	19:30	310.9	327.3
7:45	310.9	307.7	19:45	310.9	325.1
8:00	310.9	306	20:00	310.9	324.1
8:15	310.9	303	20:15	310.9	320.2
8:30	310.9	302.4	20:30	310.9	317.1
8:45	310.9	293.7	20:45	310.9	314.4
9:00	310.9	263.7	21:00	310.9	314.3
9:15	296.8	308.9	21:15	296.8	324.4
9:30	296.8	301.8	21:30	296.8	321.4
9:45	296.8	297.4	21:45	296.8	307.1
10:00	296.8	296.1	22:00	296.8	300.5
10:15	296.8	291.9	22:15	296.8	295.1
10:30	296.8	291.9	22:30	296.8	289.6
10:45	296.8	293.3	22:45	296.8	285.5
11:00	296.8	290.3	23:00	296.8	279
11:15	296.8	290.7	23:15	296.8	269.1
11:30	296.8	294	23:30	296.8	270.5
11:45	296.8	286.8	23:45	296.8	245.9

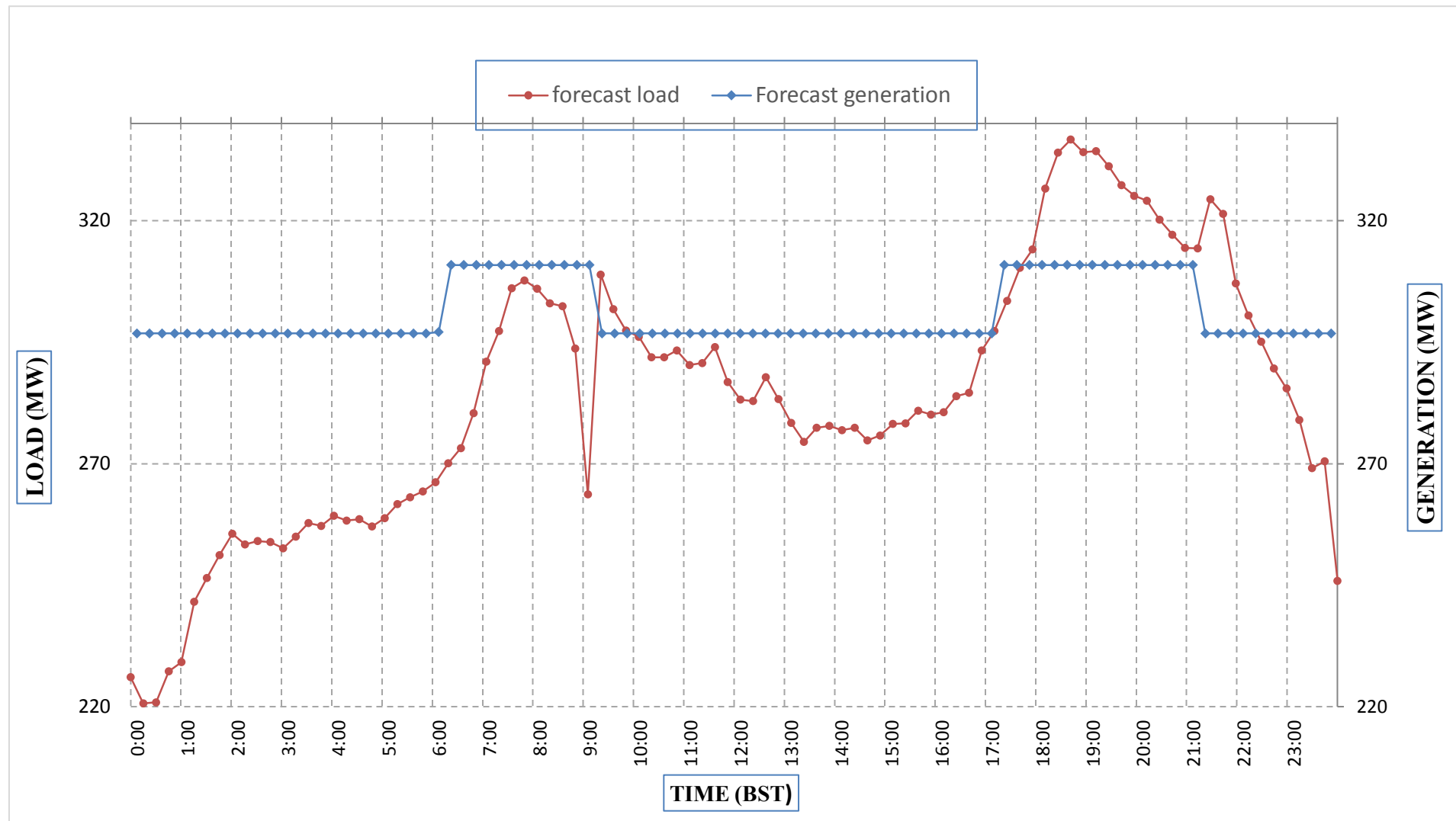
Yours faithfully,
 Phub Zam



Message No.: Enter your message number
 From: Shift In-charge, Control Room

Date: 27-Jan-18
 Time: 9:36

Forecast Generation & Load Forecast for Tomorrow (28-Jan-2018).



Yours faithfully,
 Phub Zam

	MW
Scheduled Peak Generation(28-Jan-2018).	310.90
Forecast Peak Load(28-Jan-2018).	336.70



Bhutan Power Corporation Ltd.
Bhutan Power System Operator
 Thimphu: Bhutan

འབྲུག་རྒྱལ་ཁོ་ལས་འཛིན།



Message No.: Enter your message number
From: Shift In-charge, Control Room

Date: 27-Jan-18
Time: 9:36

To
 Managing Director, BPC. Email: gemtshering@bpc.bt
 Director, O&MD, DGPC. Email: director.umd@drukgreen.com
 General Manager, TD, BPC. Email: ktobgye@bpc.bt
 Advisor, BPC. Email: bharattamang@bpc.bt

Sub: Forecast Generation and Actual Generation of Dagachhu (26-Jan-2018).

Hours (BST)	Actual Frequency	Forecast Generation	Actual Generation	Hours (BST)	Actual Frequency	Forecast Generation	Actual Generation
0:00	49.99	22	20.62	12:00	50.00	22	20.31
0:15	49.94	22	20.60	12:15	49.96	22	20.31
0:30	49.90	22	20.62	12:30	49.92	22	20.31
0:45	49.93	22	20.62	12:45	49.99	22	20.30
1:00	49.92	22	20.31	13:00	49.98	22	20.33
1:15	49.94	22	20.31	13:15	50.03	22	20.30
1:30	49.94	22	20.28	13:30	50.06	22	20.32
1:45	49.98	22	20.30	13:45	50.10	22	20.33
2:00	49.98	22	20.30	14:00	50.07	22	20.52
2:15	49.95	22	20.29	14:15	50.09	22	20.52
2:30	49.97	22	20.30	14:30	50.03	22	20.51
2:45	49.98	22	20.29	14:45	50.00	22	20.51
3:00	50.01	22	20.31	15:00	50.01	22	
3:15	49.96	22	20.29	15:15	50.00	22	20.50
3:30	49.99	22		15:30	50.00	22	20.51
3:45	49.97	22	20.31	15:45	49.97	22	20.52
4:00	50.01	22	20.29	16:00	49.97	22	20.51
4:15	49.93	22	20.28	16:15	49.99	22	20.50
4:30	49.95	22	20.29	16:30	49.97	22	20.51
4:45	49.96	22	20.30	16:45	49.96	22	20.50
5:00	49.92	22	20.32	17:00	49.98	22	20.51
5:15	49.89	22	20.30	17:15	49.99	22	20.51
5:30	49.94	22	20.30	17:30	49.99	22	20.54
6:00	49.92	22	20.46	17:45	49.99	22	20.51
6:15	50.01	22	20.45	18:00	50.01	22	20.51
6:30	49.93	22	20.45	18:15	49.95	22	20.52
6:45	49.95	22	20.44	18:30	49.99	22	20.52
7:00	49.95	22	20.45	18:45	49.88	22	
7:15	49.98	22	20.87	19:00	49.94	22	20.51
7:30	50.01	22		19:15	49.97	22	20.51
7:45	50.01	22	20.87	19:30	50.01	22	20.52
8:00	50.02	22	20.33	19:45	50.03	22	20.51
8:15	50.03	22	20.31	20:00	50.01	22	20.52
8:30	50.00	22	20.32	20:15	49.97	22	20.50
8:45	50.00	22	20.31	20:30	49.97	22	20.51
9:00	50.02	22	20.31	20:45	49.98	22	20.30
9:15	49.98	22	20.32	21:00	50.03	22	20.30
9:30	49.93	22	20.30	21:15	49.99	22	20.29
9:45	49.87	22	20.30	21:30	50.00	22	20.29
10:00	49.92	22	20.30	21:45	50.04	22	19.93
10:15	49.99	22	20.32	22:00	50.04	22	19.91
10:30	49.96	22	20.29	22:15	49.97	22	19.92
10:45	49.94	22	20.31	22:30	50.01	22	
11:00	49.89	22	20.31	22:45	50.00	22	19.90
11:15	49.89	22		23:00	49.96	22	19.92
11:30	49.93	22	20.32	23:15	50.00	22	19.93
11:45	49.96	22	20.31	23:30	49.97	22	19.91
	49.98	22		23:45	50.01	22	19.92

Note: Not able to get the frequency due to multifunction controller Card damaged.

Yours faithfully,
 Phub Zam



འབྲུག་རྒྱལ་ཁེ་ལས་འཛིན།

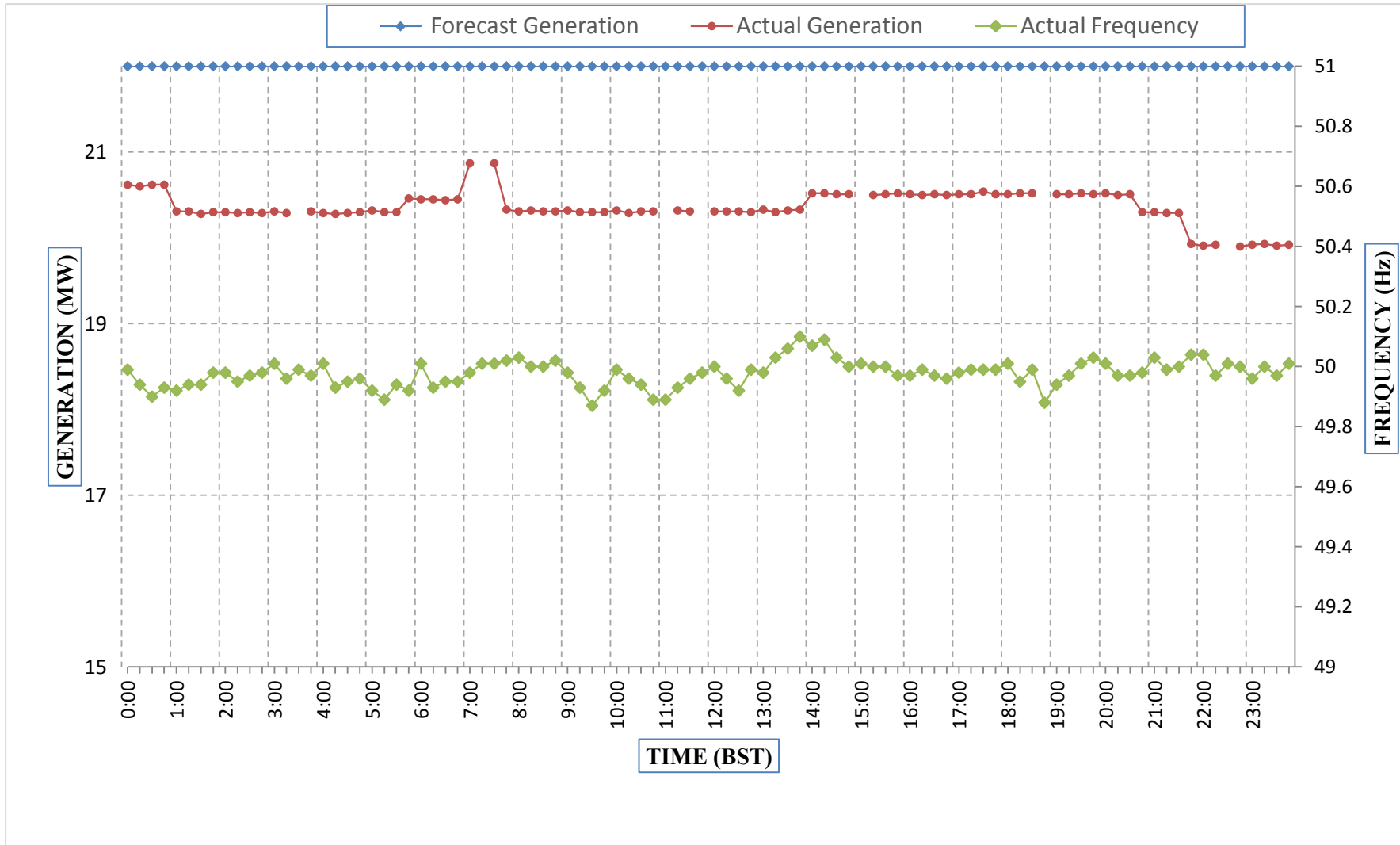
Bhutan Power Corporation Ltd.
Bhutan Power System Operator
Thimphu: Bhutan



Message No.: Enter your message number
From: Shift In-charge, Control Room

Date: 27-Jan-18
Time: 9:36

Forecast Generation & Actual Generation of Dagachhu(26-Jan-2018).



NOTE: some datas are missing

Yours faithfully,
Phub Zam

Telephone: +975-02335631; Fax: +975-02335632; Email: bhutansystemoperator@bpc.bt; www.bpc.bt