



འབྲུག་གླིང་མེ་ལམ་འཛིན།

Bhutan Power Corporation Ltd.  
Bhutan Power System Operator  
Thimphu: Bhutan



Message No.: Enter your message number  
From: Shift In-charge, Control Room

Date: 26-Jan-18  
Time: 10:31

To  
Managing Director, BPC. Email: gemtshering@bpc.bt  
Director, O&MD, DGPC. Email: director.omid@drukgreen.com  
General Manager, TD, BPC. Email: ktobgye@bpc.bt  
General Manager, DCSD, BPC. Email: sandeeprai@bpc.bt

Sub: **Load Generation Balance Report of Yesterday (25-Jan-2018).**

Hours (BST)	Forecast		Actual		Hours (BST)	Forecast		Actual	
	Generation	Load	Generation	Load		Generation	Load	Generation	Load
0:00	294.6	254.4	337.9	264.4	12:00	294.6	289	299.34	286.91
0:15	294.6	245.2	336.7	262.6	12:15	294.6	291.1	299.13	297.97
0:30	294.6	231.9	336.8	267.1	12:30	294.6	294.4	300.05	301.54
0:45	294.6	227	337.7	265.8	12:45	294.6	289.6	302.30	295.78
1:00	294.6	206.3	336.4	256.9	13:00	294.6	280.1	300.66	294.48
1:15	294.6	204.7	336.8	256.0	13:15	294.6	274	303.66	269.63
1:30	294.6	204	338.0	253.6	13:30	294.6	279.2	303.70	284.80
1:45	294.6	206.8	337.3	253.0	13:45	294.6	279.6	305.07	284.68
2:00	294.6	215.4	337.4	258.0	14:00	294.6	277.9	305.11	282.20
2:15	294.6	216.7	336.2	260.7	14:15	294.6	280.3	312.64	284.13
2:30	294.6	228	334.2	247.8	14:30	294.6	276.8	313.05	278.45
2:45	294.6	229.7	333.9	253.0	14:45	294.6	277.5	316.70	281.90
3:00	294.6	238.2	332.6	256.7	15:00	294.6	283	316.01	280.41
3:15	294.6	246.4	322.4	257.3	15:15	294.6	281	317.23	278.27
3:30	294.6	258.8	322.7	261.2	15:30	294.6	281.9	319.24	282.95
3:45	294.6	267.5	323.0	260.2	15:45	294.6	277.5	318.20	267.57
4:00	294.6	268.2	321.5	261.1	16:00	294.6	277.2	317.76	270.34
4:15	294.6	267.6	315.4	260.9	16:15	294.6	278.8	304.02	262.51
4:30	294.6	273.2	304.5	261.9	16:30	294.6	278.5	300.67	269.51
4:45	294.6	267	302.4	260.6	16:45	294.6	287.4	338.88	296.70
5:00	294.6	268.4	302.8	265.0	17:00	294.6	292.5	338.87	296.91
5:15	294.6	270.6	303.7	262.1	17:15	310.6	298	353.44	301.37
5:30	294.6	272.5	294.4	270.6	17:30	310.6	310	355.70	310.91
5:45	294.6	273	293.6	269.5	17:45	310.6	311.8	340.74	324.64
6:00	295.7	275.3	292.2	261.3	18:00	310.6	323.1	340.43	307.13
6:15	310.6	279.3	292.5	277.6	18:15	310.6	331.7	344.66	324.49
6:30	310.6	282.2	291.4	287.6	18:30	310.6	332.1	343.58	325.53
6:45	310.6	290.5	293.3	297.5	18:45	310.6	330.4	345.64	318.14
7:00	310.6	302.8	294.0	305.7	19:00	310.6	330.1	346.38	315.90
7:15	310.6	307.1	307.0	311.6	19:15	310.6	327.8	346.26	317.79
7:30	310.6	320.9	307.5	321.7	19:30	310.6	324.6	346.06	314.48
7:45	310.6	317.9	308.4	323.4	19:45	310.6	325.1	346.09	318.50
8:00	310.6	313.3	307.3	312.7	20:00	310.6	326	346.91	312.77
8:15	310.6	303.4	307.6	315.5	20:15	310.6	322.3	347.80	319.88
8:30	310.6	279.3	307.2	309.7	20:30	310.6	316.7	343.90	318.45
8:45	310.6	246.1	308.0	303.0	20:45	310.6	316	343.74	320.82
9:00	310.6	276.2	307.8	305.7	21:00	310.6	313.6	344.90	315.09
9:15	294.6	311.1	295.02	309.43	21:15	294.6	323.3	342.48	310.88
9:30	294.6	305.3	298.17	309.77	21:30	294.6	315.3	327.29	303.81
9:45	294.6	299.9	297.68	290.70	21:45	294.6	300.1	328.64	284.36
10:00	294.6	297.9	298.71	300.82	22:00	294.6	293.4	328.16	289.54
10:15	294.6	287.5	299.21	300.14	22:15	294.6	288.2	325.79	285.27
10:30	294.6	288.1	299.73	299.33	22:30	294.6	285.7	325.27	279.12
10:45	294.6	294.1	298.20	299.56	22:45	294.6	283.9	324.86	276.07
11:00	294.6	292	298.56	296.61	23:00	294.6	279.7	324.99	273.78
11:15	294.6	293.1	299.21	299.95	23:15	294.6	274.6	323.63	266.17
11:30	294.6	297.5	299.16	301.70	23:30	294.6	272.5	324.38	265.88
11:45	294.6	293.2	299.24	298.55	23:45	294.6	265.7	322.49	266.45

Yours faithfully  
Phub Zam

Coincidental peak load of Day(Last year):	
272.91	25-Jan-17
Maximum Load till date:	
362.09	14-Nov-17



འབྲུག་གློག་ལེ་ལས་འཛིན།

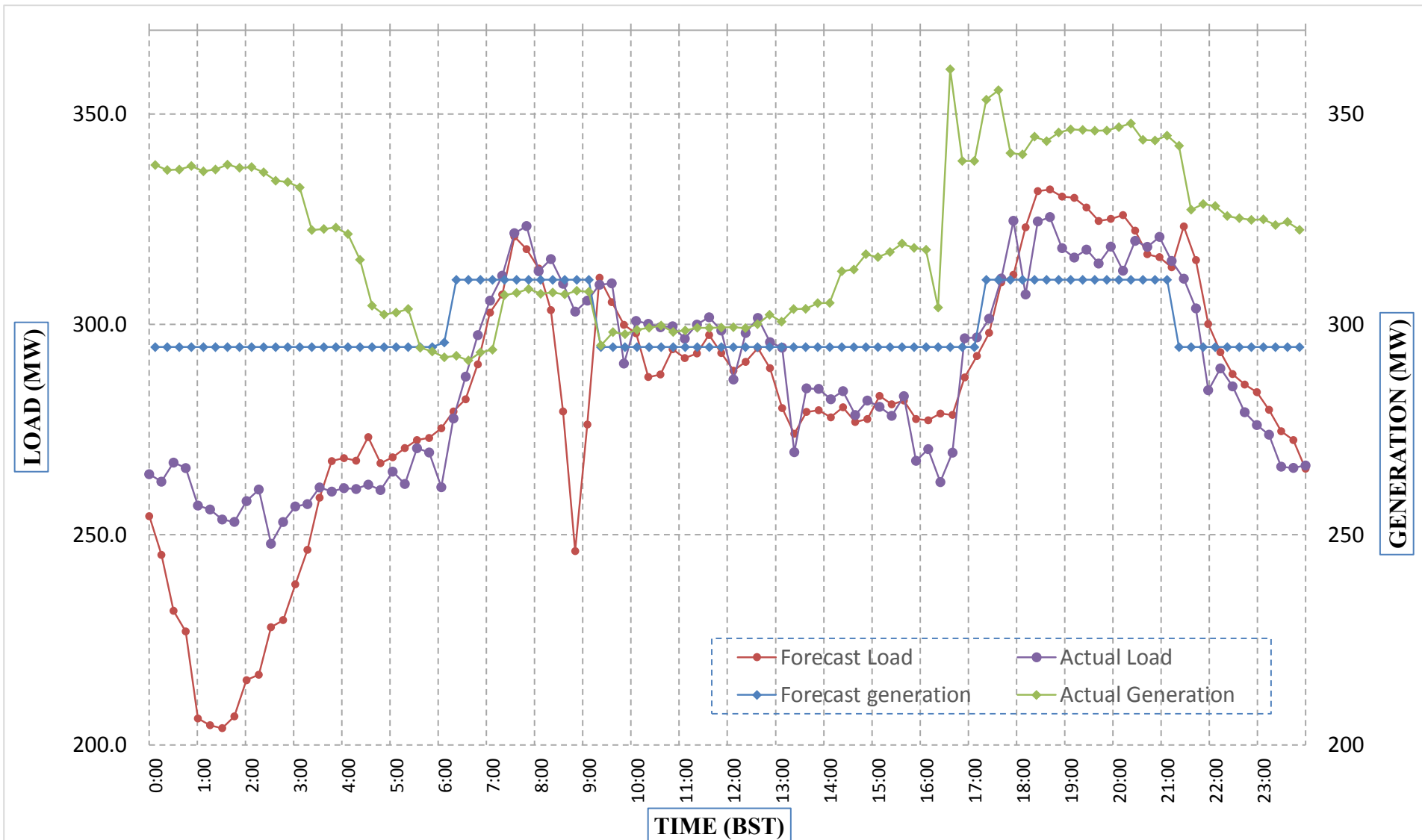
Bhutan Power Corporation Ltd.  
 Bhutan Power System Operator  
 Thimphu: Bhutan



Message No.: Enter your message number  
 From: Shift In-charge, Control Room

Date: 26-Jan-18  
 Time: 10:31

Forecast Generation & Load with Actual Generation & Load (25-Jan-2018).



Yours faithfully,  
 Phub Zam

	MW	Coincidental peak load of Day(Last year):	
Peak Co-incident Generation(25-Jan-2018).	360.67	272.91	25-Jan-17
Peak Co-incident Load(25-Jan-2018).	325.53		
		Maximum Load till date:	
		362.09	14-Nov-17

Telephone: +975-02335631; Fax: +975-02335632; Email: bhutansystemoperator@bpc.bt; www.bpc.bt



ལྷན་ རྒྱལ་གྱི་ལོ་ལས་འཛིན།

Bhutan Power Corporation Ltd.  
Bhutan Power System Operator  
Thimphu: Bhutan



Message No.: Enter your message number  
From: Shift In-charge, Control Room

Date: 26-Jan-18  
Time: 10:31

To  
Managing Director, BPC. Email: gemtshering@bpc.bt  
Director, O&MD, DGPC. Email: director.omb@drukgreen.com  
General Manager, TD, BPC. Email: thinleygyeltshen@bpc.bt  
General Manager, DCSD, BPC. Email: sandeeprai@bpc.bt

Sub: Load Generation Balance Report of Today (26-Jan-2018).

Hours (BST)	Forecast		Actual	
	Generation	Load	Generation	Load
0:00	294.6	254.4	310.6	261.4
0:15	294.6	245.2	311.7	252.8
0:30	294.6	231.9	310.0	244.9
0:45	294.6	227	310.8	241.8
1:00	294.6	206.3	310.2	239.6
1:15	294.6	204.7	310.3	245.2
1:30	294.6	204	309.7	245.6
1:45	294.6	206.8	308.8	249.7
2:00	294.6	215.4	309.2	247.9
2:15	294.6	216.7	310.2	245.3
2:30	294.6	228	310.8	244.1
2:45	294.6	229.7	309.6	246.6
3:00	294.6	238.2	310.5	246.5
3:15	294.6	246.4	309.2	243.9
3:30	294.6	258.8	310.2	245.9
3:45	294.6	267.5	309.2	247.5
4:00	294.6	268.2	310.1	246.8
4:15	294.6	267.6	310.1	248.2
4:30	294.6	273.2	310.2	230.1
4:45	294.6	267	310.1	247.7
5:00	294.6	268.4	310.1	248.1
5:15	294.6	270.6	308.8	255.6
5:30	294.6	272.5	306.9	256.0
5:45	294.6	273	306.4	257.7
6:00	295.7	275.3	305.5	261.5
6:15	310.6	279.3	306.3	259.5
6:30	310.6	282.2	319.9	265.6
6:45	310.6	290.5	318.8	265.0
7:00	310.6	302.8	320.4	278.8
7:15	310.6	307.1	320.5	290.9
7:30	310.6	320.9	319.3	289.5
7:45	310.6	317.9	318.9	299.8
8:00	310.6	313.3	318.6	299.8
8:15	310.6	303.4	314.1	299.9
8:30	310.6	279.3	315.1	297.1
8:45	310.6	246.1	314.8	297.1
9:00	310.6	276.2	313.4	296.4

Coincidental peak load of Day(Last year):	
241.25	26-Jan-18
Maximum Load till date:	
362.09	14-Nov-17

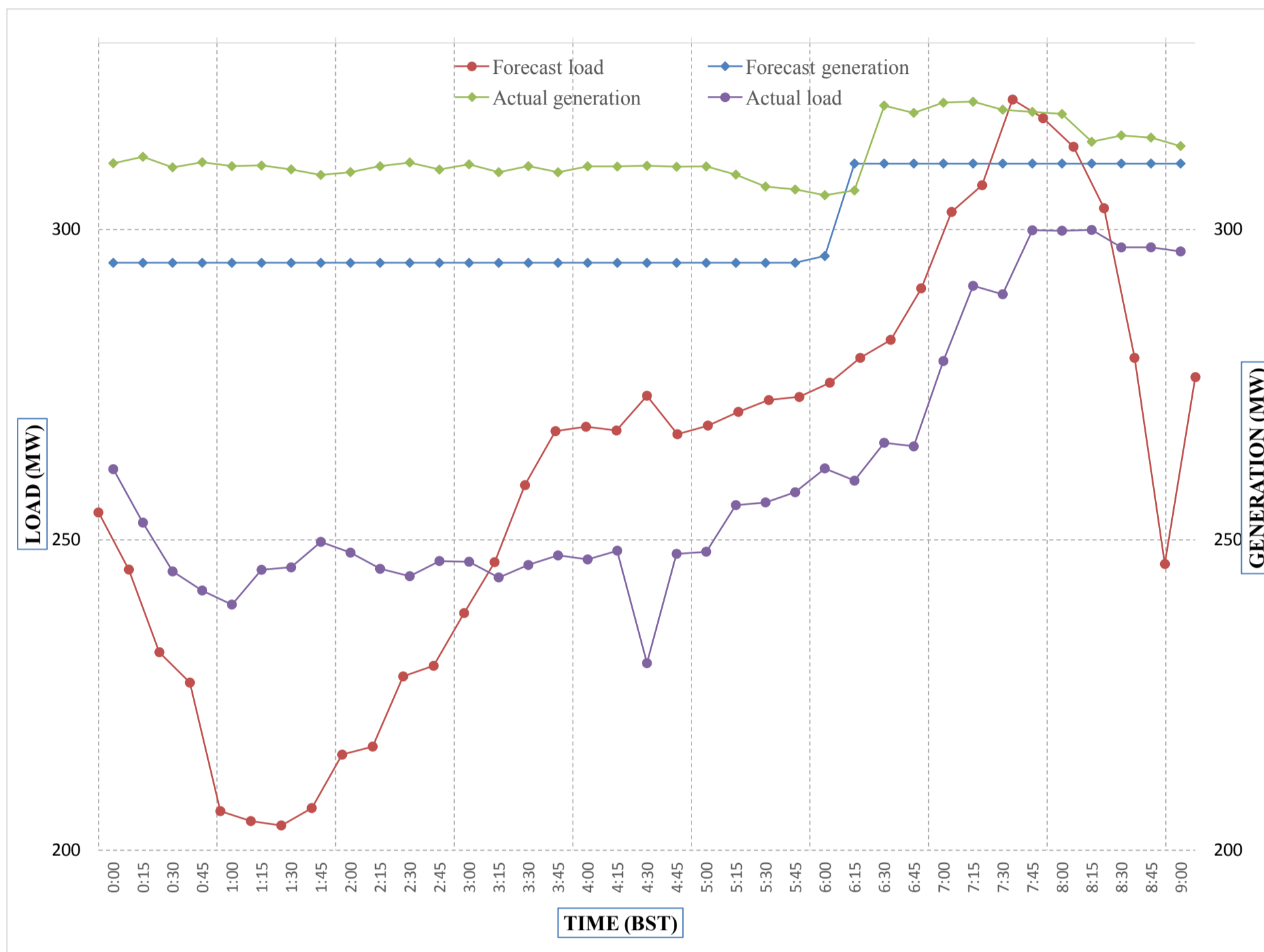
Yours faithfully,  
Phub Zam



Message No.: Enter your message number  
 From: Shift In-charge, Control Room

Date: 26-Jan-18  
 Time: 10:31

Forecast Generation & Load with Actual Generation & Load of Today from 00:00hrs to 09:00hrs(26-Jan-2018).



Yours faithfully  
 Phub Zam



འབྲུག་གྲོག་ལེན་ལེ་སྐོར་ལྷན་ཁག་།  
**Bhutan Power Corporation Ltd.**  
**Bhutan Power System Operator**  
 Thimphu: Bhutan



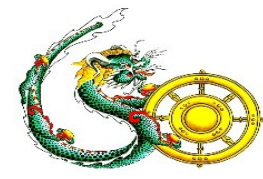
**Message No.:** Enter your message number **Date:** 26-Jan-18  
**From:** Shift In-charge, Control Room **Time:** 10:31

**To**  
 Managing Director, BPC. Email: gemtshering@bpc.bt  
 Director, O&MD, DGPC. Email: director.umd@drukgreen.com  
 General Manager, TD, BPC. Email: ktobgye@bpc.bt  
 Advisor, BPC. Email: bharattamang@bpc.bt

**Sub:** Load Generation Balance Report of Tomorrow (27-Jan-2018).

Hours (BST)	Forecast		Hours (BST)	Forecast	
	Generation	Load		Generation	Load
0:00	296.3	243.3	12:00	296.3	285.1
0:15	296.3	226.2	12:15	296.3	287.9
0:30	296.3	223.7	12:30	296.3	293.4
0:45	296.3	223.2	12:45	296.3	288.5
1:00	296.3	214.4	13:00	296.3	282
1:15	296.3	223.5	13:15	296.3	275
1:30	296.3	227.4	13:30	296.3	276.7
1:45	296.3	246.6	13:45	296.3	277.1
2:00	296.3	253.5	14:00	296.3	275.9
2:15	296.3	251.3	14:15	296.3	277.7
2:30	296.3	254.4	14:30	296.3	272.5
2:45	296.3	256	14:45	296.3	275.2
3:00	296.3	255	15:00	296.3	278.1
3:15	296.3	258.2	15:15	296.3	278.2
3:30	296.3	260.9	15:30	296.3	281.2
3:45	296.3	260.7	15:45	296.3	278.9
4:00	296.3	263.1	16:00	296.3	279.7
4:15	296.3	260.9	16:15	296.3	283.3
4:30	296.3	263.6	16:30	296.3	282.1
4:45	296.3	260.6	16:45	296.3	292.6
5:00	296.3	261.8	17:00	296.3	296.8
5:15	296.3	263.2	17:15	296.3	304.2
5:30	296.3	264.9	17:30	296.3	311.5
6:45	296.3	265.7	17:45	296.3	313.8
6:00	310.5	266.9	18:00	310.5	326.4
6:15	310.5	273.2	18:15	310.5	334.8
6:30	310.5	276.8	18:30	310.5	337.4
6:45	310.5	284.2	18:45	310.5	333.6
7:00	310.5	294.7	19:00	310.5	332.8
7:15	310.5	299.7	19:15	310.5	330.9
7:30	310.5	310.9	19:30	310.5	326.7
7:45	310.5	310.6	19:45	310.5	325.2
8:00	310.5	308.5	20:00	310.5	324.3
8:15	310.5	306	20:15	310.5	320.5
8:30	310.5	304.7	20:30	310.5	317.2
8:45	310.5	293.3	20:45	310.5	316.1
9:00	310.5	254.6	21:00	310.5	316.1
9:15	296.3	313.5	21:15	296.6	328.1
9:30	296.3	303.4	21:30	296.6	325.2
9:45	296.3	298.8	21:45	296.3	313.7
10:00	296.3	296	22:00	296.3	307.9
10:15	296.3	290.1	22:15	296.3	298.7
10:30	296.3	291.6	22:30	296.3	283.4
10:45	296.3	295.7	22:45	296.3	280.2
11:00	296.3	292.5	23:00	296.3	250.7
11:15	296.3	293.1	23:15	296.3	236.9
11:30	296.3	295.9	23:30	296.3	232.8
11:45	296.3	286.4	23:45	296.3	229.4

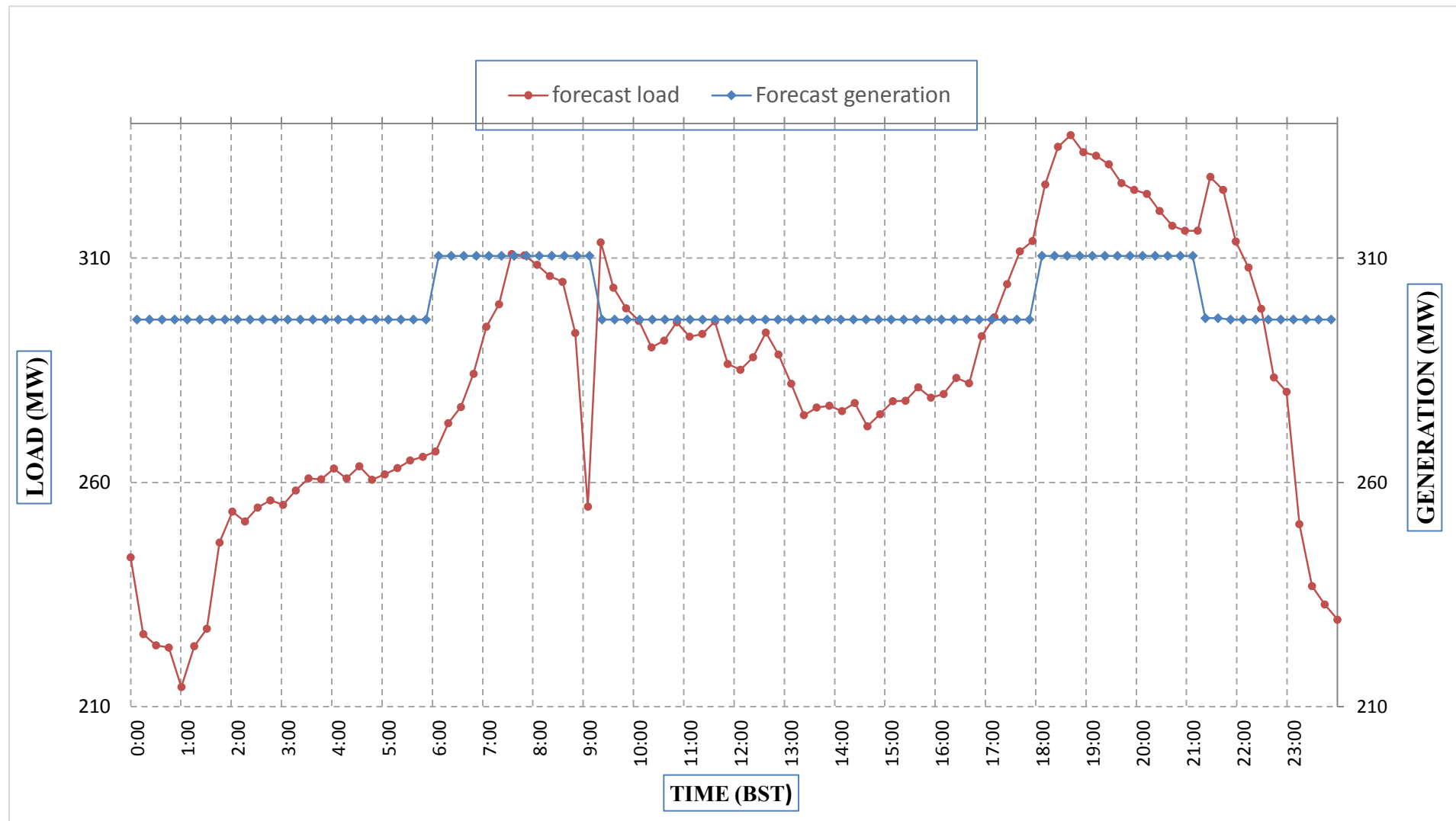
Yours faithfully,  
 Phub Zam



Message No.: Enter your message number  
 From: Shift In-charge, Control Room

Date: 26-Jan-18  
 Time: 10:31

**Forecast Generation & Load Forecast for Tomorrow (27-Jan-2018).**



Yours faithfully,  
 Phub Zam

	MW
Scheduled Peak Generation(27-Jan-2018).	310.50
Forecast Peak Load(27-Jan-2018).	337.40



**Bhutan Power Corporation Ltd.**  
**Bhutan Power System Operator**  
 Thimphu: Bhutan

འབྲུག་རྒྱལ་ཁོ་ལས་འཛིན།



**Message No.:** Enter your message number  
**From:** Shift In-charge, Control Room

**Date:** 26-Jan-18  
**Time:** 10:31

**To**  
 Managing Director, BPC. Email: gemtshering@bpc.bt  
 Director, O&MD, DGPC. Email: director.umd@drukgreen.com  
 General Manager, TD, BPC. Email: ktobgye@bpc.bt  
 Advisor, BPC. Email: bharattamang@bpc.bt

**Sub:** Forecast Generation and Actual Generation of Dagachhu (25-Jan-2018).

Hours (BST)	Actual Frequency	Forecast Generation	Actual Generation	Hours (BST)	Actual Frequency	Forecast Generation	Actual Generation
0:00	49.90	20.5	22.53	12:00	49.90	20.5	30.05
0:15	49.90	20.5	22.52	12:15	49.90	20.5	28.04
0:30	49.90	20.5	23.06	12:30	49.90	20.5	23.04
0:45	49.90	20.5	21.97	12:45	49.90	20.5	23.04
1:00	49.90	20.5	21.99	13:00	49.90	20.5	23.03
1:15	49.90	20.5	21.99	13:15	49.90	20.5	22.00
1:30	49.90	20.5	21.99	13:30	49.90	20.5	22.00
1:45	49.90	20.5	21.98	13:45	49.90	20.5	21.02
2:00	49.90	20.5	22.01	14:00	49.90	20.5	20.77
2:15	49.90	20.5	21.98	14:15	49.90	20.5	20.75
2:30	49.90	20.5	22.00	14:30	49.90	20.5	20.72
2:45	49.90	20.5	22.00	14:45	49.90	20.5	20.78
3:00	49.90	20.5	21.99	15:00	49.90	20.5	20.89
3:15	49.90	20.5	22.00	15:15	49.90	20.5	20.87
3:30	49.90	20.5	21.99	15:30	49.90	20.5	20.76
3:45	49.90	20.5	22.51	15:45	49.90	20.5	20.88
4:00	49.90	20.5	22.53	16:00	49.90	20.5	20.75
4:15	49.90	20.5	24.01	16:15	49.90	20.5	20.76
4:30	49.90	20.5	23.04	16:30	49.90	20.5	20.66
4:45	49.90	20.5	23.04	16:45	49.90	20.5	20.76
5:00	49.90	20.5	23.04	17:00	49.90	20.5	20.80
5:15	49.90	20.5	23.05	17:15	49.90	20.5	20.79
5:30	49.90	20.5	23.49	17:30	49.90	20.5	20.87
6:45	49.90	20.5	23.50	17:45	49.90	20.5	20.84
6:00	49.90	20.5	23.50	18:00	49.90	20.5	20.72
6:15	49.90	20.5	23.50	18:15	49.90	20.5	20.72
6:30	49.90	20.5	23.48	18:30	49.90	20.5	20.88
6:45	49.90	20.5	23.49	18:45	49.90	20.5	20.87
7:00	49.90	20.5	23.50	19:00	49.90	20.5	20.71
7:15	49.90	20.5	22.52	19:15	49.90	20.5	20.72
7:30	49.90	20.5	22.53	19:30	49.90	20.5	20.87
7:45	49.90	20.5	22.51	19:45	49.90	20.5	20.87
8:00	49.90	20.5	22.52	20:00	49.90	20.5	20.73
8:15	49.90	20.5	22.54	20:15	49.90	20.5	20.71
8:30	49.90	20.5	22.53	20:30	49.90	20.5	20.88
8:45	49.90	20.5	22.53	20:45	49.90	20.5	20.71
9:00	49.90	20.5	22.53	21:00	49.90	20.5	20.87
9:15	49.90	20.5	22.53	21:15	49.90	20.5	20.87
9:30	49.90	20.5	22.53	21:30	49.90	20.5	20.86
9:45	49.90	20.5	21.99	21:45	49.90	20.5	20.82
10:00	49.90	20.5	21.98	22:00	49.90	20.5	20.86
10:15	49.90	20.5	21.98	22:15	49.90	20.5	20.80
10:30	49.90	20.5	21.98	22:30	49.90	20.5	20.61
10:45	49.90	20.5	0.00	22:45	49.90	20.5	20.61
11:00	49.90	20.5	0.00	23:00	49.90	20.5	20.61
11:15	49.90	20.5	0.00	23:15	49.90	20.5	20.61
11:30	49.90	20.5	32.05	23:30	49.90	20.5	20.63
11:45	49.90	20.5	30.06	23:45	49.90	20.5	20.62

Note:Not able to get the frequency due to multifunction controller Card damaged.

Yours faithfully,  
 Phub Zam



འབྲུག་གྲོག་ཚེ་ལས་འཛིན།

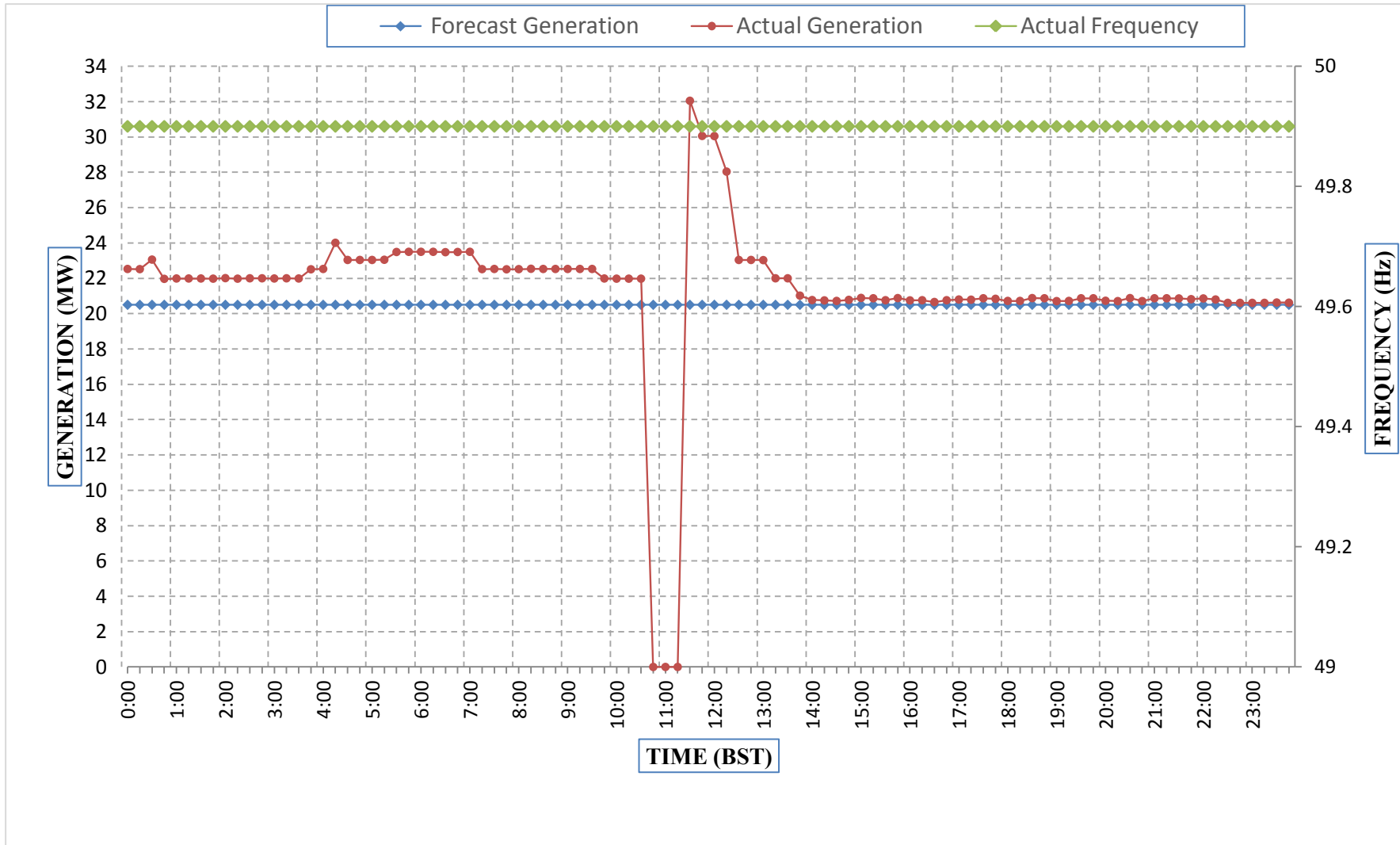
Bhutan Power Corporation Ltd.  
Bhutan Power System Operator  
Thimphu: Bhutan



Message No.: Enter your message number  
From: Shift In-charge, Control Room

Date: 26-Jan-18  
Time: 10:31

Forecast Generation & Actual Generation of Dagachhu(25-Jan-2018).



Note: DHP unit-I tripped at 10:35hrs and closed back at 11:09hrs

Yours faithfully,  
Phub Zam