



འབྲུག་རྒྱལ་ཁོ་ལས་འཛིན།

Bhutan Power Corporation Ltd.
Bhutan Power System Operator
Thimphu: Bhutan



Message No.: Enter your message number
From: Shift In-charge, Control Room

Date: 25-Jan-18
Time: 10:43

To
Managing Director, BPC. Email: gemtshering@bpc.bt
Director, O&MD, DGPC. Email: director.umd@drukgreen.com
General Manager, TD, BPC. Email: ktobgye@bpc.bt
General Manager, DCSD, BPC. Email: sandeeprai@bpc.bt

Sub: **Load Generation Balance Report of Yesterday (24-Jan-2018).**

Hours (BST)	Forecast		Actual		Hours (BST)	Forecast		Actual	
	Generation	Load	Generation	Load		Generation	Load	Generation	Load
0:00	333.7	257.9	323.7	251.8	12:00	329.1	288.4	297.20	272.81
0:15	333.7	250.1	302.4	242.1	12:15	329.1	291.4	299.07	282.63
0:30	333.7	239	302.7	242.5	12:30	329.1	291.2	301.29	282.44
0:45	330.7	230.7	312.0	255.7	12:45	329.1	285.7	303.15	276.53
1:00	314.5	214.5	306.8	264.6	13:00	329.1	276.5	301.87	272.67
1:15	310.1	210.1	321.2	264.0	13:15	329.1	276	304.35	257.10
1:30	307.5	207.5	323.7	254.5	13:30	329.1	277.2	304.57	257.35
1:45	305.4	205.4	324.4	261.0	13:45	329.1	277.8	303.92	255.08
2:00	304.5	204.5	323.6	258.4	14:00	329.1	277.4	304.48	257.27
2:15	301.6	201.6	326.4	263.8	14:15	329.1	278.2	301.49	258.15
2:30	307.9	207.9	325.1	263.0	14:30	329.1	275.8	299.98	262.80
2:45	306.8	206.8	324.9	255.1	14:45	329.1	276.9	296.88	259.55
3:00	314.4	214.4	325.2	252.9	15:00	329.1	283.1	295.53	263.82
3:15	320.9	220.9	311.5	250.5	15:15	329.1	281.8	299.50	263.05
3:30	329.2	232.7	311.2	246.3	15:30	329.1	280.8	298.61	267.78
3:45	329.2	253.6	308.4	245.8	15:45	329.1	280.9	300.41	275.36
4:00	329.2	254.1	306.5	248.2	16:00	329.1	279.2	302.37	276.63
4:15	329.2	255.3	307.3	253.2	16:15	329.1	281.7	304.74	283.84
4:30	329.2	269.1	311.3	252.5	16:30	329.1	283	304.30	285.14
4:45	329.2	263.4	309.8	252.1	16:45	329.1	284	303.42	294.00
5:00	329.2	264.7	309.8	252.0	17:00	344.7	290.2	304.66	299.19
5:15	329.2	267.3	308.2	251.6	17:15	344.7	297.2	323.93	308.37
5:30	329.2	267.2	308.1	250.4	17:30	344.7	307.9	339.58	314.80
5:45	329.2	270.6	308.1	252.1	17:45	344.7	314	341.66	318.38
6:00	345.2	278	321.3	240.8	18:00	344.7	327.2	341.97	329.28
6:15	345.2	279.5	320.0	261.2	18:15	344.7	334.5	342.56	330.89
6:30	345.2	280.1	315.4	268.4	18:30	344.7	335.7	342.47	333.22
6:45	345.2	287.6	315.9	273.6	18:45	344.7	334.1	343.18	332.40
7:00	345.2	301.1	315.2	279.4	19:00	344.7	334.8	343.44	339.45
7:15	345.2	304.1	315.7	289.9	19:15	344.7	331.2	354.32	334.64
7:30	345.2	319.8	314.7	294.2	19:30	344.7	328.1	354.65	330.84
7:45	345.2	317.9	314.7	300.4	19:45	344.7	328.9	353.36	330.02
8:00	345.2	298.6	315.1	299.7	20:00	344.7	329.5	352.74	326.21
8:15	345.2	261.3	315.5	298.5	20:15	344.7	321.8	352.95	319.02
8:30	343.2	243.2	316.5	302.4	20:30	344.7	316.4	356.01	320.90
8:45	345.1	254.6	315.5	293.8	20:45	344.7	314	352.59	316.75
9:00	330.6	314.8	316.5	298.0	21:00	330.6	312.7	353.32	310.91
9:15	329.1	312.3	293.55	298.97	21:15	329.1	328.3	340.26	309.67
9:30	329.1	304.1	295.94	295.14	21:30	329.1	323.2	339.05	301.43
9:45	329.1	299.5	294.52	287.78	21:45	329.1	305	341.13	296.48
10:00	329.1	297.1	295.41	287.30	22:00	329.1	295.7	341.02	289.09
10:15	329.1	284	297.27	285.33	22:15	329.1	288.6	339.60	283.71
10:30	329.1	284.9	296.76	290.85	22:30	329.1	286.7	334.96	281.06
10:45	329.1	291.5	297.30	289.41	22:45	329.1	287.4	332.48	273.08
11:00	329.1	290.9	295.69	286.52	23:00	329.1	281.7	333.35	267.83
11:15	329.1	291.2	296.11	270.31	23:15	329.1	275.7	334.83	266.47
11:30	329.1	296.8	296.38	275.99	23:30	329.1	272.7	335.05	261.08
11:45	329.1	292.7	295.04	277.66	23:45	329.1	266.5	334.74	261.62

Yours faithfully
Karma Choden

Coincidental peak load of Day(Last year):	
273.3 MW	24-Jan-17
Maximum Load till date:	
362.09	14-Nov-17



འབྲུག་གློག་ལེ་ལས་འཛིན།

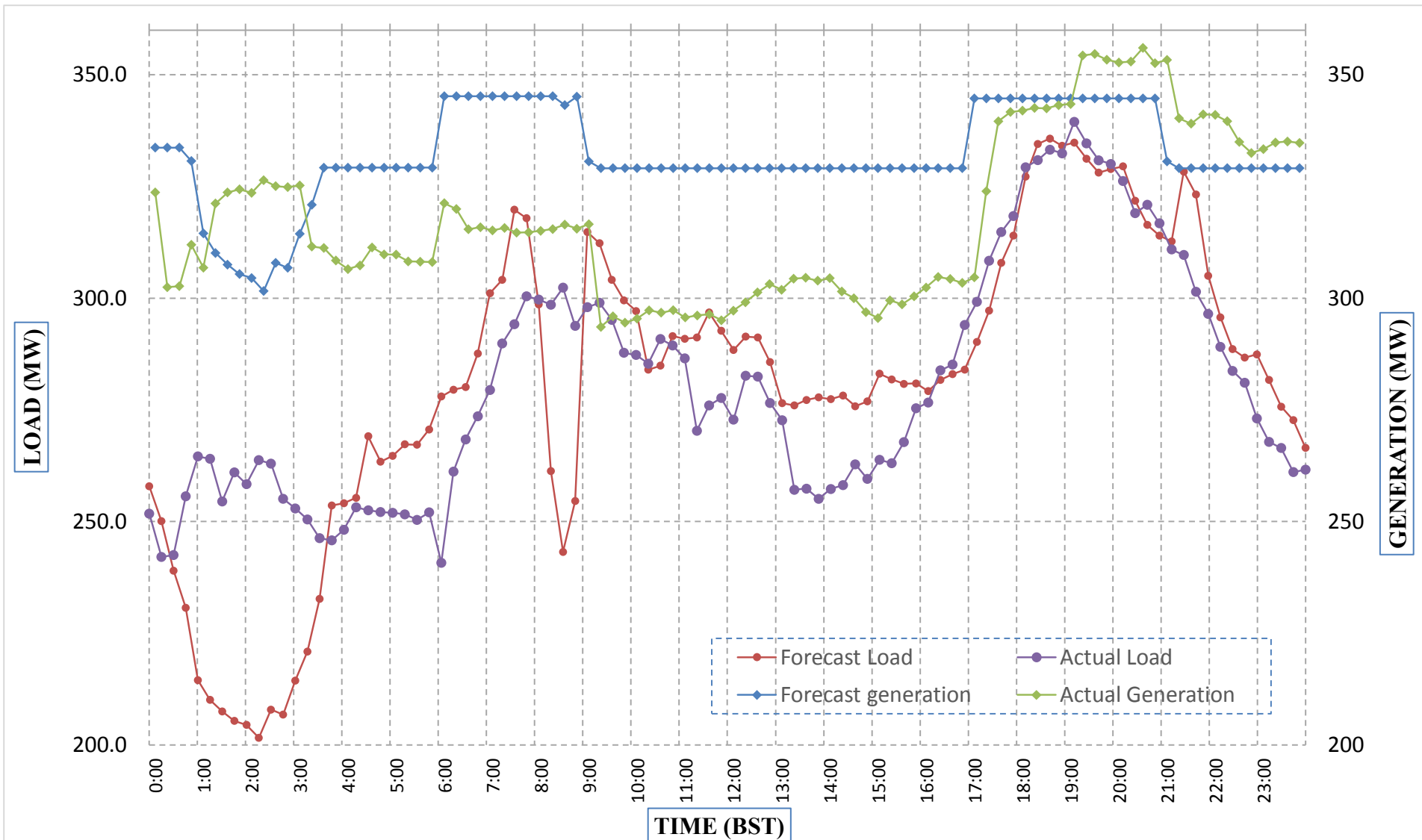
Bhutan Power Corporation Ltd.
 Bhutan Power System Operator
 Thimphu: Bhutan



Message No.: Enter your message number
 From: Shift In-charge, Control Room

Date: 25-Jan-18
 Time: 10:43

Forecast Generation & Load with Actual Generation & Load (24-Jan-2018).



Yours faithfully,
 Karma Choden

	MW	Coincidental peak load of Day(Last year):	
Peak Co-incident Generation(24-Jan-2018).	356.01	273.3 MW	24-Jan-17
Peak Co-incident Load(24-Jan-2018).	339.45		
		Maximum Load till date:	
		362.09	14-Nov-17

Telephone: +975-02335631; Fax: +975-02335632; Email: bhutansystemoperator@bpc.bt; www.bpc.bt



འབྲུག་གླིང་མི་ལས་འཛིན།

Bhutan Power Corporation Ltd.
Bhutan Power System Operator
Thimphu: Bhutan



Message No.: Enter your message number
From: Shift In-charge, Control Room

Date: 25-Jan-18
Time: 10:43

To
Managing Director, BPC. Email: gemtshering@bpc.bt
Director, O&MD, DGPC. Email: director.omb@drukgreen.com
General Manager, TD, BPC. Email: thinleygyeltshen@bpc.bt
General Manager, DCSD, BPC. Email: sandeeprai@bpc.bt

Sub: Load Generation Balance Report of Today (25-Jan-2018).

Hours (BST)	Forecast		Actual	
	Generation	Load	Generation	Load
0:00	294.6	254.4	334.8	261.2
0:15	294.6	245.2	333.5	257.5
0:30	294.6	231.9	334.8	255.0
0:45	294.6	227	333.8	253.2
1:00	294.6	206.3	334.0	243.3
1:15	294.6	204.7	333.8	251.0
1:30	294.6	204	331.7	248.5
1:45	294.6	206.8	332.7	249.4
2:00	294.6	215.4	333.8	252.0
2:15	294.6	216.7	334.2	249.0
2:30	294.6	228	334.7	242.0
2:45	294.6	229.7	333.4	247.0
3:00	294.6	238.2	333.5	247.5
3:15	294.6	246.4	332.9	248.9
3:30	294.6	258.8	329.9	247.5
3:45	294.6	267.5	329.7	249.5
4:00	294.6	268.2	329.7	245.5
4:15	294.6	267.6	331.2	241.5
4:30	294.6	273.2	330.8	245.7
4:45	294.6	267	328.3	246.7
5:00	294.6	268.4	329.8	251.1
5:15	294.6	270.6	329.7	252.1
5:30	294.6	272.5	328.8	249.4
5:45	294.6	273	328.5	255.7
6:00	295.7	275.3	328.4	257.3
6:15	310.6	279.3	313.8	262.3
6:30	310.6	282.2	314.9	268.7
6:45	310.6	290.5	314.1	277.9
7:00	310.6	302.8	312.9	282.3
7:15	310.6	307.1	312.7	289.7
7:30	310.6	320.9	313.0	297.7
7:45	310.6	317.9	312.4	300.4
8:00	310.6	313.3	312.5	301.2
8:15	310.6	303.4	313.0	302.1
8:30	310.6	279.3	313.9	292.6
8:45	310.6	246.1	314.2	297.4
9:00	310.6	276.2	313.3	294.0

Coincidental peak load of Day(Last year):	
272.91 MW	25-Jan-18
Maximum Load till date:	
362.09	14-Nov-17

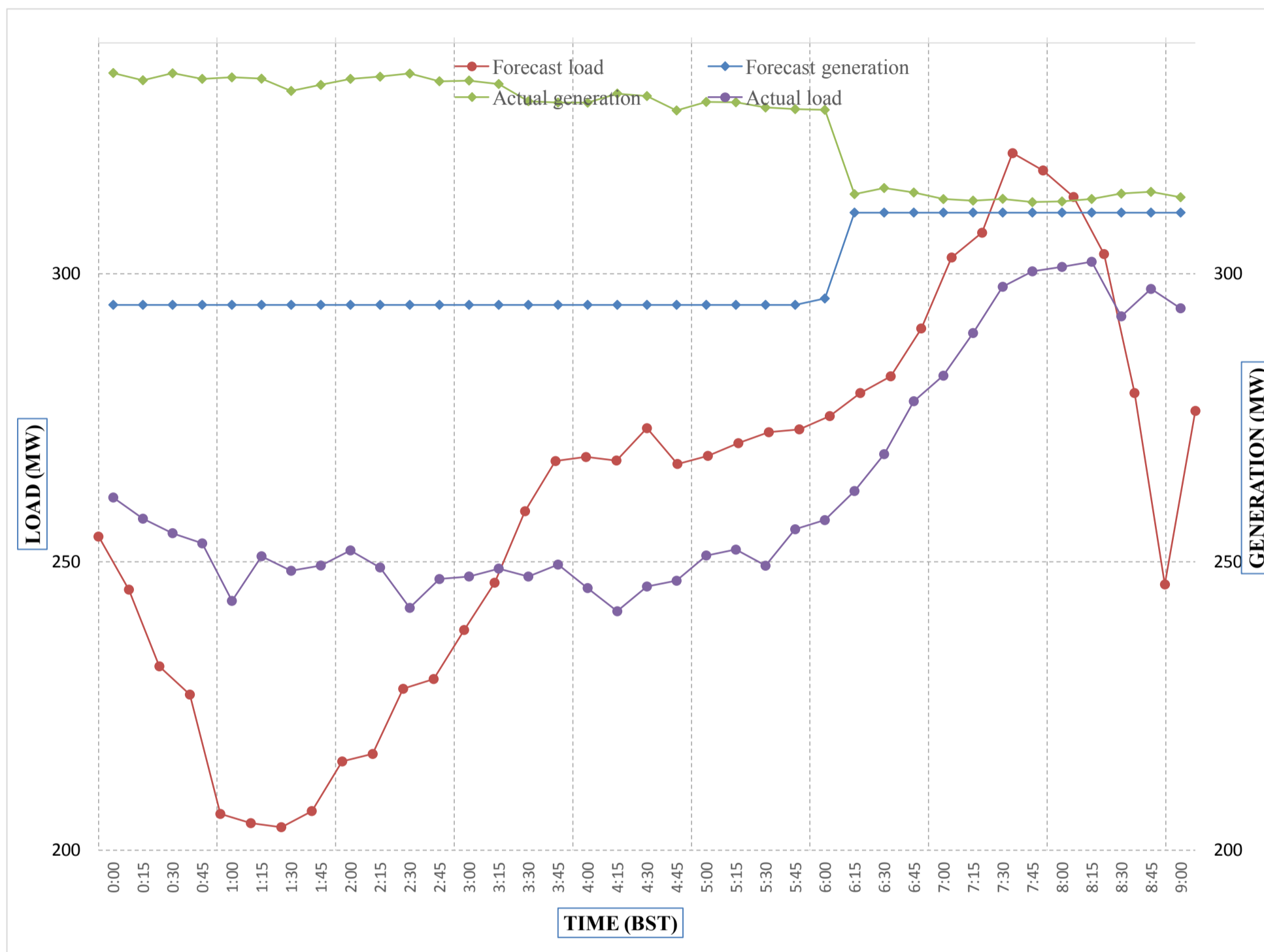
Yours faithfully,
Karma Choden



Message No.: Enter your message number
 From: Shift In-charge, Control Room

Date: 25-Jan-18
 Time: 10:43

Forecast Generation & Load with Actual Generation & Load of Today from 00:00hrs to 09:00hrs(25-Jan-2018).



Yours faithfully
 Karma Choden



འབྲུག་གྲོག་ལེ་ལམ་ལྷན་ཁག་།
Bhutan Power Corporation Ltd.
Bhutan Power System Operator
 Thimphu: Bhutan



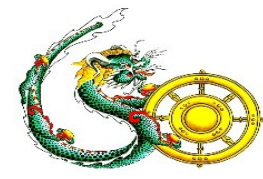
Message No.: Enter your message number **Date:** 25-Jan-18
From: Shift In-charge, Control Room **Time:** 10:43

To
 Managing Director, BPC. Email: gemtshering@bpc.bt
 Director, O&MD, DGPC. Email: director.omb@drukgreen.com
 General Manager, TD, BPC. Email: ktobgye@bpc.bt
 Advisor, BPC. Email: bharattamang@bpc.bt

Sub: Load Generation Balance Report of Tomorrow (26-Jan-2018).

Hours (BST)	Forecast		Hours (BST)	Forecast	
	Generation	Load		Generation	Load
0:00	294.6	254.4	12:00	294.6	289
0:15	294.6	245.2	12:15	294.6	291.1
0:30	294.6	231.9	12:30	294.6	294.4
0:45	294.6	227	12:45	294.6	289.6
1:00	294.6	206.3	13:00	294.6	280.1
1:15	294.6	204.7	13:15	294.6	274
1:30	294.6	204	13:30	294.6	279.2
1:45	294.6	206.8	13:45	294.6	279.6
2:00	294.6	215.4	14:00	294.6	277.9
2:15	294.6	216.7	14:15	294.6	280.3
2:30	294.6	228	14:30	294.6	276.8
2:45	294.6	229.7	14:45	294.6	277.5
3:00	294.6	238.2	15:00	294.6	283
3:15	294.6	246.4	15:15	294.6	281
3:30	294.6	258.8	15:30	294.6	281.9
3:45	294.6	267.5	15:45	294.6	277.5
4:00	294.6	268.2	16:00	294.6	277.2
4:15	294.6	267.6	16:15	294.6	278.8
4:30	294.6	273.2	16:30	294.6	278.5
4:45	294.6	267	16:45	294.6	287.4
5:00	294.6	268.4	17:00	294.6	292.5
5:15	294.6	270.6	17:15	310.6	298
5:30	294.6	272.5	17:30	310.6	310
6:45	294.6	273	17:45	310.6	311.8
6:00	295.7	275.3	18:00	310.6	323.1
6:15	310.6	279.3	18:15	310.6	331.7
6:30	310.6	282.2	18:30	310.6	332.1
6:45	310.6	290.5	18:45	310.6	330.4
7:00	310.6	302.8	19:00	310.6	330.1
7:15	310.6	307.1	19:15	310.6	327.8
7:30	310.6	320.9	19:30	310.6	324.6
7:45	310.6	317.9	19:45	310.6	325.1
8:00	310.6	313.3	20:00	310.6	326
8:15	310.6	303.4	20:15	310.6	322.3
8:30	310.6	279.3	20:30	310.6	316.7
8:45	310.6	246.1	20:45	310.6	316
9:00	310.6	276.2	21:00	310.6	313.6
9:15	294.6	311.1	21:15	294.6	323.3
9:30	294.6	305.3	21:30	294.6	315.3
9:45	294.6	299.9	21:45	294.6	300.1
10:00	294.6	297.9	22:00	294.6	293.4
10:15	294.6	287.5	22:15	294.6	288.2
10:30	294.6	288.1	22:30	294.6	285.7
10:45	294.6	294.1	22:45	294.6	283.9
11:00	294.6	292	23:00	294.6	279.7
11:15	294.6	293.1	23:15	294.6	274.6
11:30	294.6	297.5	23:30	294.6	272.5
11:45	294.6	293.2	23:45	294.6	265.7

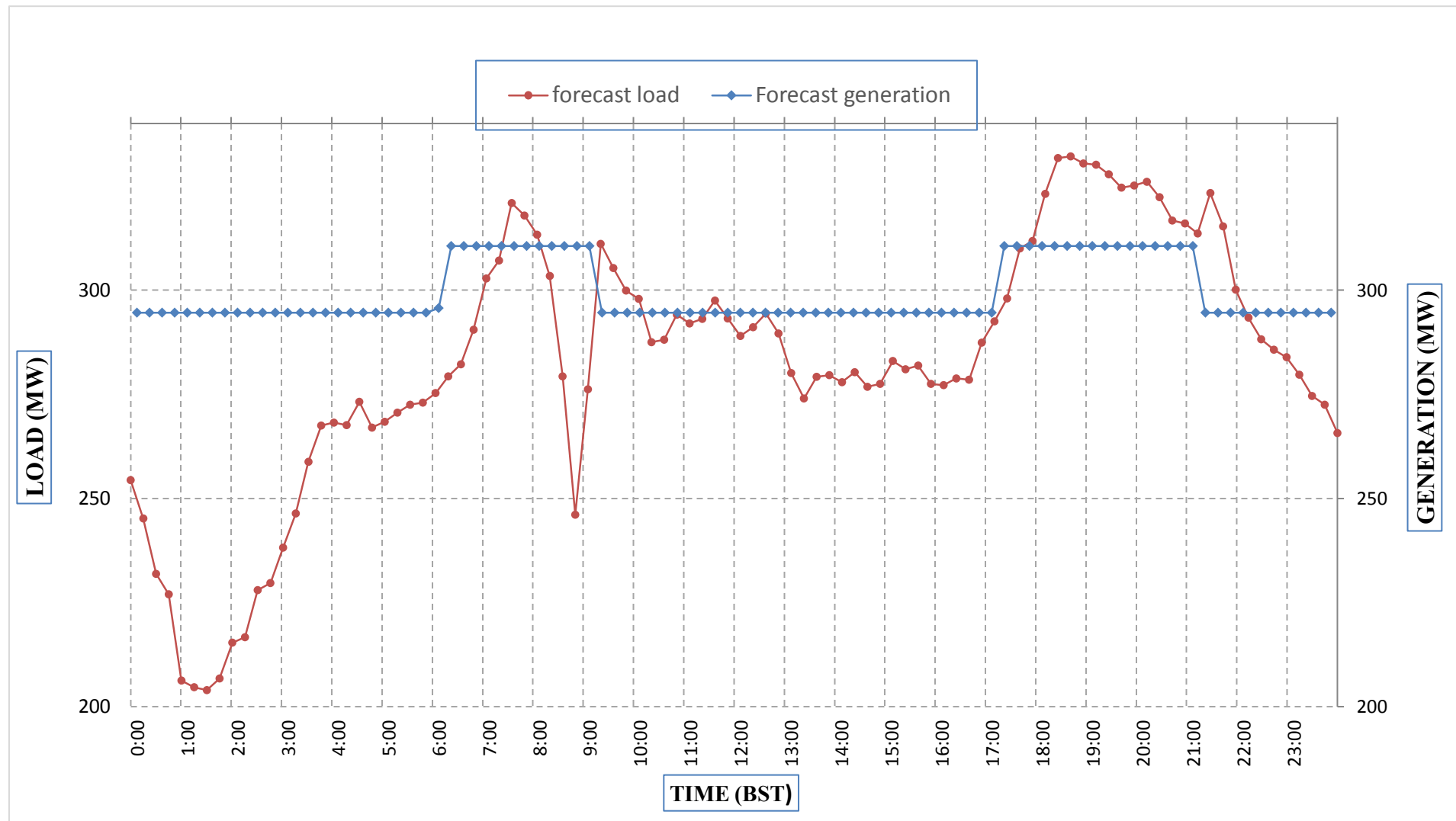
Yours faithfully,
 Karma Choden



Message No.: Enter your message number
 From: Shift In-charge, Control Room

Date: 25-Jan-18
 Time: 10:43

Forecast Generation & Load Forecast for Tomorrow (26-Jan-2018).



Yours faithfully,
 Karma Choden

	MW
Scheduled Peak Generation(26-Jan-2018).	310.60
Forecast Peak Load(26-Jan-2018).	332.10



Bhutan Power Corporation Ltd.
Bhutan Power System Operator
Thimphu: Bhutan

འབྲུག་རྒྱལ་ཁོ་ལས་འཛིན།



Message No.: Enter your message number
From: Shift In-charge, Control Room

Date: 25-Jan-18
Time: 10:43

To
 Managing Director, BPC. Email: gemtshering@bpc.bt
 Director, O&MD, DGPC. Email: director.umd@drukgreen.com
 General Manager, TD, BPC. Email: ktobgye@bpc.bt
 Advisor, BPC. Email: bharattamang@bpc.bt

Sub: Forecast Generation and Actual Generation of Dagachhu (24-Jan-2018).

Hours (BST)	Actual Frequency	Forecast Generation	Actual Generation	Hours (BST)	Actual Frequency	Forecast Generation	Actual Generation
0:00		20.7	20.76	12:00		20.7	21.09
0:15		20.7	20.77	12:15		20.7	21.09
0:30		20.7	20.72	12:30		20.7	21.07
0:45		20.7	20.89	12:45		20.7	21.09
1:00		20.7	20.78	13:00		20.7	21.08
1:15		20.7	20.70	13:15		20.7	21.03
1:30		20.7	20.81	13:30		20.7	21.01
1:45		20.7	20.89	13:45		20.7	21.04
2:00		20.7	20.77	14:00		20.7	20.85
2:15		20.7	20.78	14:15		20.7	20.78
2:30		20.7	20.77	14:30		20.7	20.76
2:45		20.7	20.83	14:45		20.7	20.75
3:00		20.7	20.85	15:00		20.7	20.85
3:15		20.7	20.89	15:15		20.7	20.75
3:30		20.7	20.80	15:30		20.7	20.73
3:45		20.7	20.77	15:45		20.7	20.87
4:00		20.7	20.87	16:00		20.7	20.85
4:15		20.7	20.87	16:15		20.7	20.86
4:30		20.7	20.87	16:30		20.7	20.87
4:45		20.7	20.76	16:45		20.7	20.87
5:00		20.7	20.88	17:00		20.7	20.87
5:15		20.7	20.92	17:15		20.7	20.87
5:30		20.7	20.89	17:30		20.7	20.87
6:45		20.7	20.85	17:45		20.7	20.87
6:00		20.7	20.91	18:00		20.7	25.06
6:15		20.7	20.86	18:15		20.7	25.07
6:30		20.7	20.95	18:30		20.7	25.05
6:45		20.7	21.28	18:45		20.7	25.06
7:00		20.7	21.28	19:00		20.7	25.08
7:15		20.7	21.28	19:15		20.7	25.05
7:30		20.7	21.29	19:30		20.7	25.05
7:45		20.7	21.27	19:45		20.7	25.06
8:00		20.7	21.27	20:00		20.7	25.04
8:15		20.7	21.27	20:15		20.7	25.07
8:30		20.7	21.29	20:30		20.7	21.98
8:45		20.7	21.28	20:45		20.7	21.97
9:00		20.7	21.28	21:00		20.7	21.98
9:15		20.7	21.28	21:15		20.7	21.99
9:30		20.7	21.28	21:30		20.7	22.00
9:45		20.7	21.28	21:45		20.7	21.99
10:00		20.7	21.29	22:00		20.7	21.97
10:15		20.7	21.29	22:15		20.7	21.96
10:30		20.7	21.30	22:30		20.7	21.98
10:45		20.7	21.28	22:45		20.7	21.98
11:00		20.7	21.26	23:00		20.7	21.98
11:15		20.7	21.08	23:15		20.7	21.97
11:30		20.7	21.09	23:30		20.7	21.97
11:45		20.7	21.08	23:45		20.7	21.99

Note:Not able to get the frequency due to multifunction controller Card damaged.

Yours faithfully,
 Karma Choden



འབྲུག་རྒྱལ་ཁོ་ལས་འཛིན།

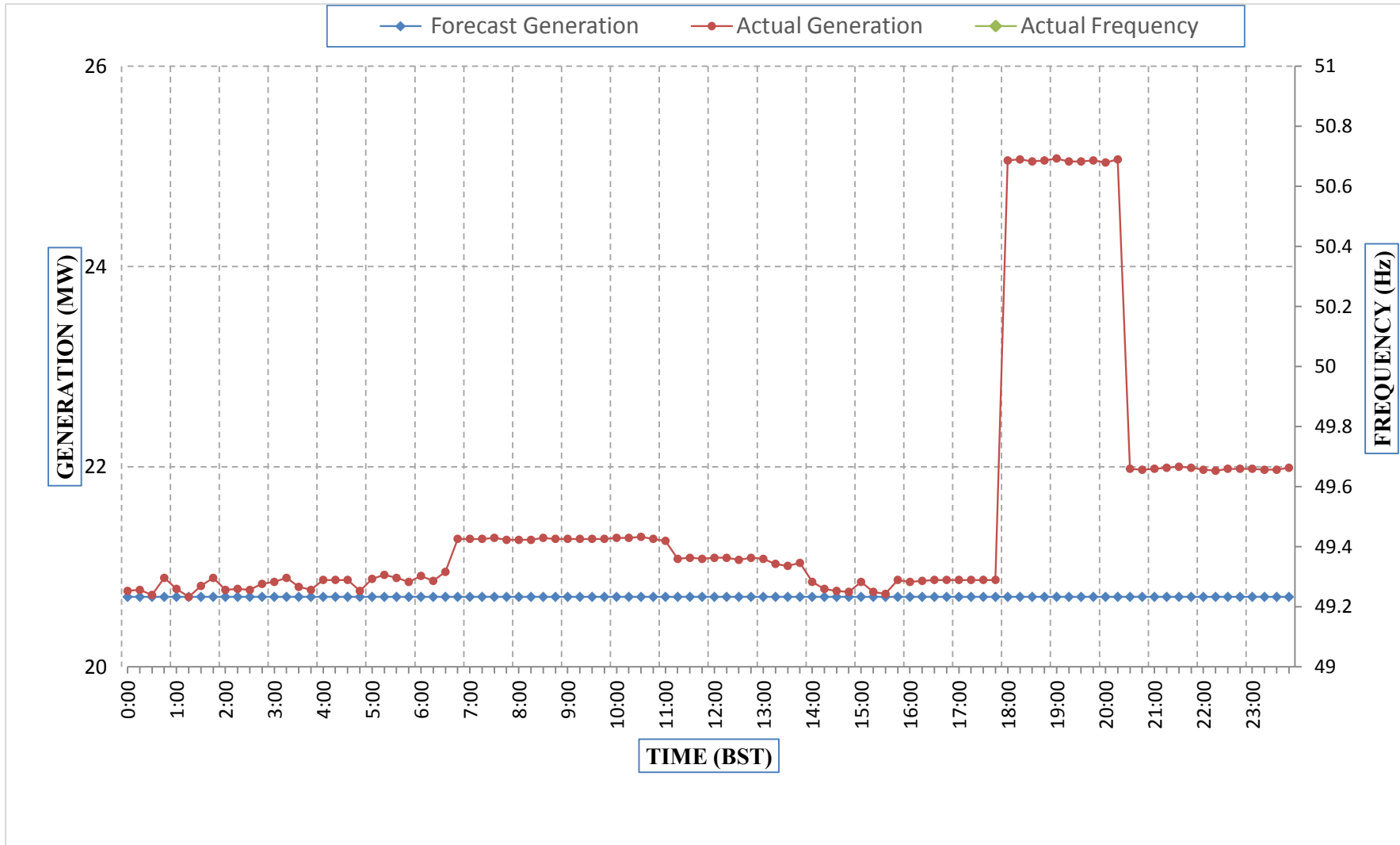
Bhutan Power Corporation Ltd.
Bhutan Power System Operator
Thimphu: Bhutan



Message No.: Enter your message number
From: Shift In-charge, Control Room

Date: 25-Jan-18
Time: 10:43

Forecast Generation & Actual Generation of Dagachhu(24-Jan-2018).



Yours faithfully,
Karma Choden