



འབྲུག་གློག་ལེ་ལས་འཛིན།

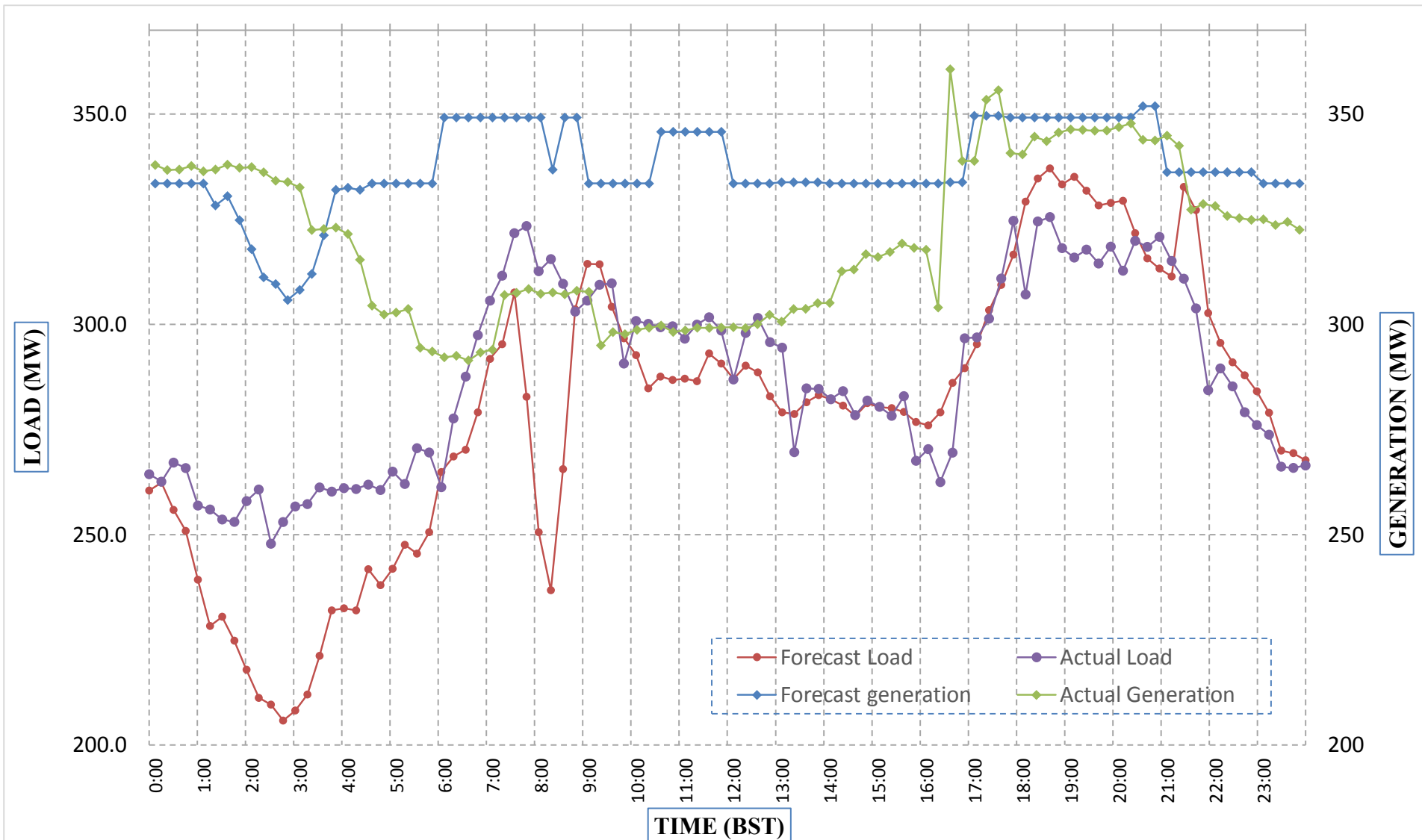
Bhutan Power Corporation Ltd.
 Bhutan Power System Operator
 Thimphu: Bhutan



Message No.: Enter your message number
 From: Shift In-charge, Control Room

Date: 24-Jan-18
 Time: 12:33

Forecast Generation & Load with Actual Generation & Load (23-Jan-2018).



Yours faithfully,
 Karma Choden

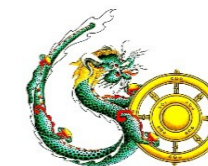
	MW	Coincidental peak load of Day(Last year):	
Peak Co-incident Generation(23-Jan-2018).	360.67	268.45 MW	23-Jan-17
Peak Co-incident Load(23-Jan-2018).	325.53		
		Maximum Load till date:	
		362.09	14-Nov-17

Telephone: +975-02335631; Fax: +975-02335632; Email: bhutansystemoperator@bpc.bt; www.bpc.bt



འབྲུག་གྲོག་མེ་ལས་འཛིན།

Bhutan Power Corporation Ltd.
Bhutan Power System Operator
Thimphu: Bhutan



Message No.: Enter your message number
From: Shift In-charge, Control Room

Date: 24-Jan-18
Time: 12:33

To
Managing Director, BPC. Email: gemtshering@bpc.bt
Director, O&MD, DGPC. Email: director.omb@drukgreen.com
General Manager, TD, BPC. Email: thinleygyeltshen@bpc.bt
General Manager, DCSD, BPC. Email: sandeeprai@bpc.bt

Sub: Load Generation Balance Report of Today (24-Jan-2018).

Hours (BST)	Forecast		Actual	
	Generation	Load	Generation	Load
0:00	333.7	257.9	323.7	251.8
0:15	333.7	250.1	302.4	242.1
0:30	333.7	239	302.7	242.5
0:45	330.7	230.7	312.0	255.7
1:00	314.5	214.5	306.8	264.6
1:15	310.1	210.1	321.2	264.0
1:30	307.5	207.5	323.7	254.5
1:45	305.4	205.4	324.4	261.0
2:00	304.5	204.5	323.6	258.4
2:15	301.6	201.6	326.4	263.8
2:30	307.9	207.9	325.1	263.0
2:45	306.8	206.8	324.9	255.1
3:00	314.4	214.4	325.2	252.9
3:15	320.9	220.9	311.5	250.5
3:30	329.2	232.7	311.2	246.3
3:45	329.2	253.6	308.4	245.8
4:00	329.2	254.1	306.5	248.2
4:15	329.2	255.3	307.3	253.2
4:30	329.2	269.1	311.3	252.5
4:45	329.2	263.4	309.8	252.1
5:00	329.2	264.7	309.8	252.0
5:15	329.2	267.3	308.2	251.6
5:30	329.2	267.2	308.1	250.4
5:45	329.2	270.6	308.1	252.1
6:00	345.2	278	321.3	240.8
6:15	345.2	279.5	320.0	261.2
6:30	345.2	280.1	315.4	268.4
6:45	345.2	287.6	315.9	273.6
7:00	345.2	301.1	315.2	279.4
7:15	345.2	304.1	315.7	289.9
7:30	345.2	319.8	314.7	294.2
7:45	345.2	317.9	314.7	300.4
8:00	345.2	298.6	315.1	299.7
8:15	345.2	261.3	315.5	298.5
8:30	343.2	243.2	316.5	302.4
8:45	345.1	254.6	315.5	293.8
9:00	330.6	314.8	316.5	298.0

Coincidental peak load of Day(Last year):	
273.3 MW	24-Jan-18
Maximum Load till date:	
362.09	14-Nov-17

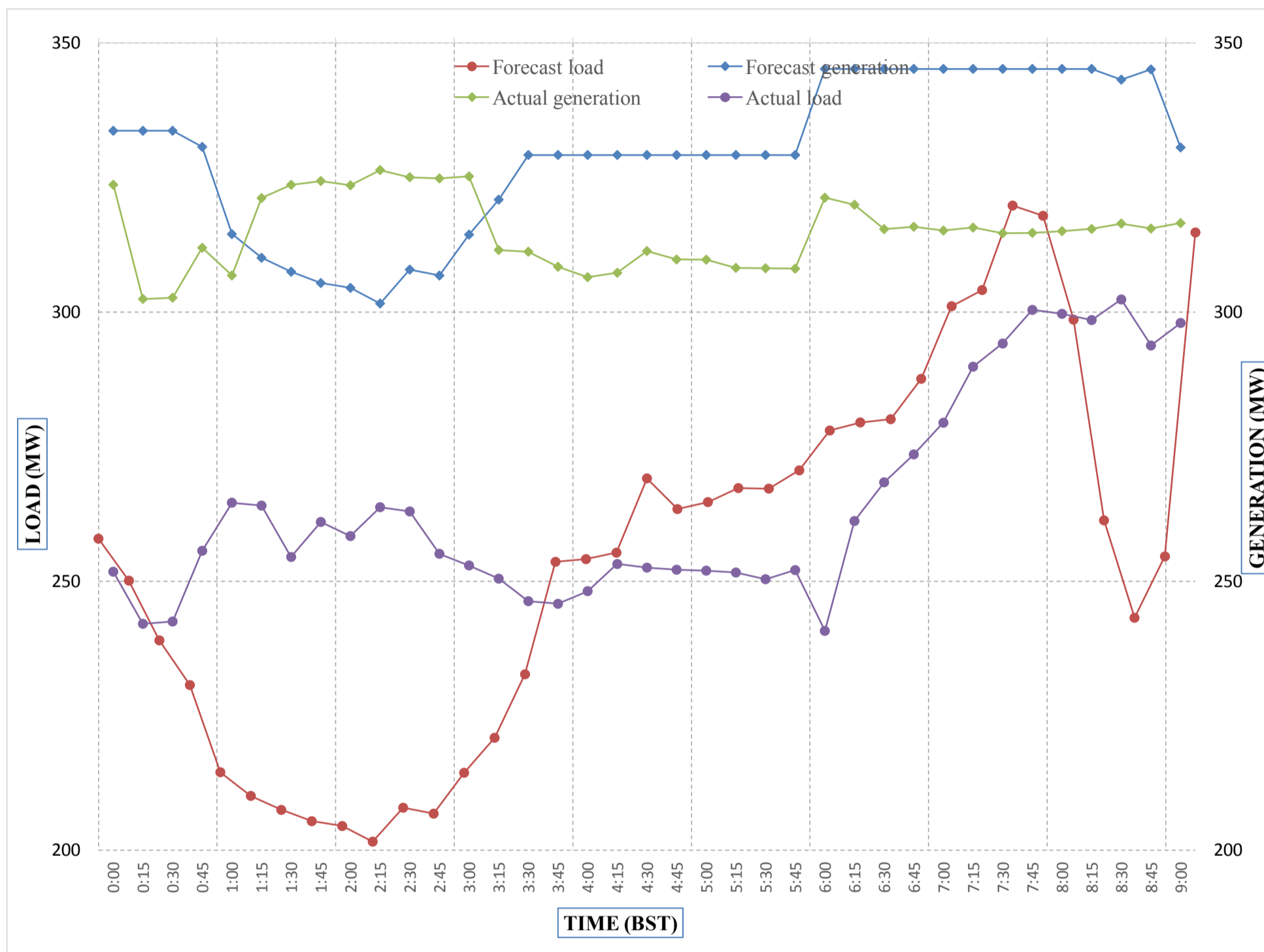
Yours faithfully,
Karma Choden



Message No.: Enter your message number
 From: Shift In-charge, Control Room

Date: 24-Jan-18
 Time: 12:33

Forecast Generation & Load with Actual Generation & Load of Today from 00:00hrs to 09:00hrs(24-Jan-2018).



Yours faithfully
 Karma Choden



འབྲུག་གྲོག་ལེན་ལེ་སྒོམ་ལྷན་ཁག་།
Bhutan Power Corporation Ltd.
Bhutan Power System Operator
 Thimphu: Bhutan



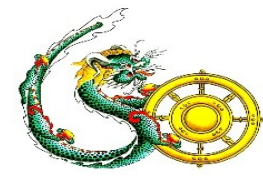
Message No.: Enter your message number **Date:** 24-Jan-18
From: Shift In-charge, Control Room **Time:** 12:33

To
 Managing Director, BPC. Email: gemtshering@bpc.bt
 Director, O&MD, DGPC. Email: director.omb@drukgreen.com
 General Manager, TD, BPC. Email: ktobgye@bpc.bt
 Advisor, BPC. Email: bharattamang@bpc.bt

Sub: Load Generation Balance Report of Tomorrow (25-Jan-2018).

Hours (BST)	Forecast		Hours (BST)	Forecast	
	Generation	Load		Generation	Load
0:00	294.6	254.4	12:00	294.6	289
0:15	294.6	245.2	12:15	294.6	291.1
0:30	294.6	231.9	12:30	294.6	294.4
0:45	294.6	227	12:45	294.6	289.6
1:00	294.6	206.3	13:00	294.6	280.1
1:15	294.6	204.7	13:15	294.6	274
1:30	294.6	204	13:30	294.6	279.2
1:45	294.6	206.8	13:45	294.6	279.6
2:00	294.6	215.4	14:00	294.6	277.9
2:15	294.6	216.7	14:15	294.6	280.3
2:30	294.6	228	14:30	294.6	276.8
2:45	294.6	229.7	14:45	294.6	277.5
3:00	294.6	238.2	15:00	294.6	283
3:15	294.6	246.4	15:15	294.6	281
3:30	294.6	258.8	15:30	294.6	281.9
3:45	294.6	267.5	15:45	294.6	277.5
4:00	294.6	268.2	16:00	294.6	277.2
4:15	294.6	267.6	16:15	294.6	278.8
4:30	294.6	273.2	16:30	294.6	278.5
4:45	294.6	267	16:45	294.6	287.4
5:00	294.6	268.4	17:00	294.6	292.5
5:15	294.6	270.6	17:15	310.6	298
5:30	294.6	272.5	17:30	310.6	310
6:45	294.6	273	17:45	310.6	311.8
6:00	295.7	275.3	18:00	310.6	323.1
6:15	310.6	279.3	18:15	310.6	331.7
6:30	310.6	282.2	18:30	310.6	332.1
6:45	310.6	290.5	18:45	310.6	330.4
7:00	310.6	302.8	19:00	310.6	330.1
7:15	310.6	307.1	19:15	310.6	327.8
7:30	310.6	320.9	19:30	310.6	324.6
7:45	310.6	317.9	19:45	310.6	325.1
8:00	310.6	313.3	20:00	310.6	326
8:15	310.6	303.4	20:15	310.6	322.3
8:30	310.6	279.3	20:30	310.6	316.7
8:45	310.6	246.1	20:45	310.6	316
9:00	310.6	276.2	21:00	310.6	313.6
9:15	294.6	311.1	21:15	294.6	323.3
9:30	294.6	305.3	21:30	294.6	315.3
9:45	294.6	299.9	21:45	294.6	300.1
10:00	294.6	297.9	22:00	294.6	293.4
10:15	294.6	287.5	22:15	294.6	288.2
10:30	294.6	288.1	22:30	294.6	285.7
10:45	294.6	294.1	22:45	294.6	283.9
11:00	294.6	292	23:00	294.6	279.7
11:15	294.6	293.1	23:15	294.6	274.6
11:30	294.6	297.5	23:30	294.6	272.5
11:45	294.6	293.2	23:45	294.6	265.7

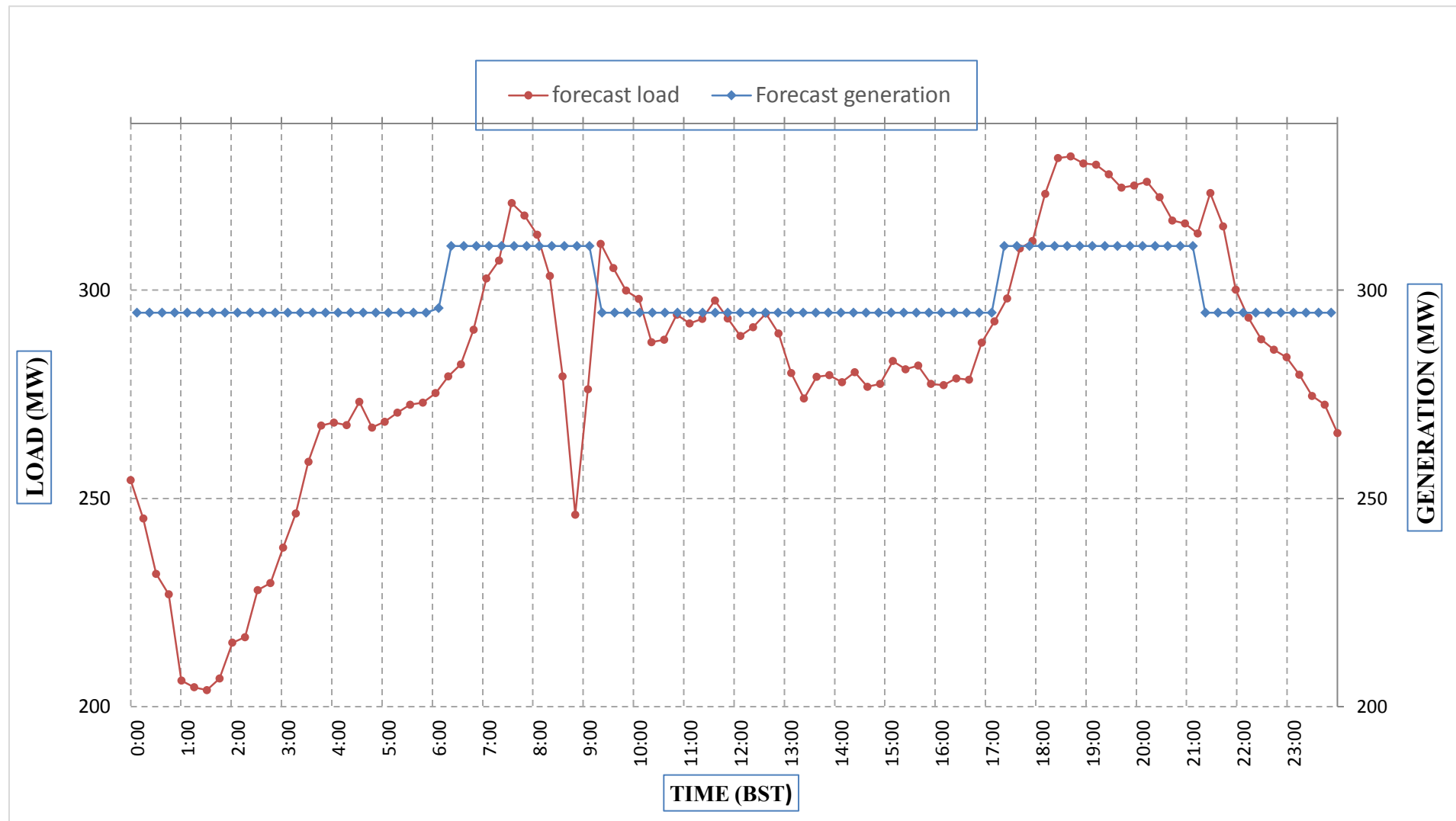
Yours faithfully,
 Karma Choden



Message No.: Enter your message number
 From: Shift In-charge, Control Room

Date: 24-Jan-18
 Time: 12:33

Forecast Generation & Load Forecast for Tomorrow (25-Jan-2018).



Yours faithfully,
 Karma Choden

	MW
Scheduled Peak Generation(25-Jan-2018).	310.60
Forecast Peak Load(25-Jan-2018).	332.10



Bhutan Power Corporation Ltd.
 Bhutan Power System Operator
 Thimphu: Bhutan

འབྲུག་གྲོགས་ཚོལ་ལས་ཁུངས་།



Message No.: Enter your message number
From: Shift In-charge, Control Room

Date: 24-Jan-18
Time: 12:33

To
 Managing Director, BPC. Email: gemtshering@bpc.bt
 Director, O&MD, DGPC. Email: director.omb@drukgreen.com
 General Manager, TD, BPC. Email: ktobgye@bpc.bt
 Advisor, BPC. Email: bharrattamang@bpc.bt

Sub: Forecast Generation and Actual Generation of Dagachhu (23-Jan-2018).

Hours (BST)	Actual Frequency	Forecast Generation	Actual Generation	Hours (BST)	Actual Frequency	Forecast Generation	Actual Generation
0:00		20.7	20.76	12:00		21.09	21.33
0:15		20.7	20.77	12:15		21.09	21.32
0:30		20.7	20.72	12:30		21.07	21.34
0:45		20.7	20.89	12:45		21.09	21.31
1:00		20.7	20.78	13:00		21.08	21.39
1:15		20.7	20.70	13:15		21.03	21.40
1:30		20.7	20.81	13:30		21.01	21.40
1:45		20.7	20.89	13:45		21.04	21.64
2:00		20.7	20.77	14:00		20.85	21.62
2:15		20.7	20.78	14:15		20.78	21.62
2:30		20.7	20.77	14:30		20.76	21.63
2:45		20.7	20.83	14:45		20.75	21.62
3:00		20.7	20.85	15:00		20.85	21.63
3:15		20.7	20.89	15:15		20.75	21.63
3:30		20.7	20.80	15:30		20.73	21.62
3:45		20.7	20.77	15:45		20.87	21.63
4:00		20.7	20.87	16:00		20.85	21.62
4:15		20.7	20.87	16:15		20.86	21.61
4:30		20.7	20.87	16:30		20.87	21.64
4:45		20.7	20.76	16:45		0.00	21.61
5:00		20.7	20.88	17:00		0.00	21.62
5:15		20.7	20.92	17:15		0.00	21.64
5:30		20.7	20.89	17:30		0.00	21.63
6:45		20.7	20.85	17:45		1.37	21.63
6:00		20.7	20.91	18:00		25.06	21.63
6:15		20.7	20.86	18:15		25.07	21.64
6:30		20.7	20.95	18:30		25.05	21.62
6:45		20.7	21.28	18:45		25.06	21.62
7:00		20.7	21.28	19:00		25.08	21.70
7:15		20.7	21.28	19:15		25.05	21.68
7:30		20.7	21.29	19:30		25.05	21.69
7:45		20.7	21.27	19:45		25.06	21.69
8:00		20.7	21.27	20:00		25.04	21.99
8:15		20.7	21.27	20:15		25.07	21.98
8:30		20.7	21.29	20:30		21.98	21.98
8:45		20.7	21.28	20:45		21.97	21.99
9:00		20.7	21.28	21:00		21.98	21.98
9:15		20.7	21.28	21:15		21.99	22.00
9:30		20.7	21.28	21:30		22.00	21.98
9:45		20.7	21.28	21:45		21.99	21.99
10:00		20.7	21.29	22:00		21.97	22.00
10:15		20.7	21.29	22:15		21.96	22.01
10:30		20.7	21.30	22:30		21.98	22.02
10:45		20.7	21.28	22:45		21.98	22.03
11:00		20.7	21.26	23:00		21.98	22.04
11:15		20.7	21.08	23:15		21.97	22.05
11:30		20.7	21.09	23:30		21.97	22.06
11:45		20.7	21.08	23:45		21.99	22.07

Note: Not able to get the frequency due to multifunction controller Card damaged.

Yours faithfully,
 Karma Choden



འབྲུག་གྲོག་ཚེ་ལས་འཛིན།

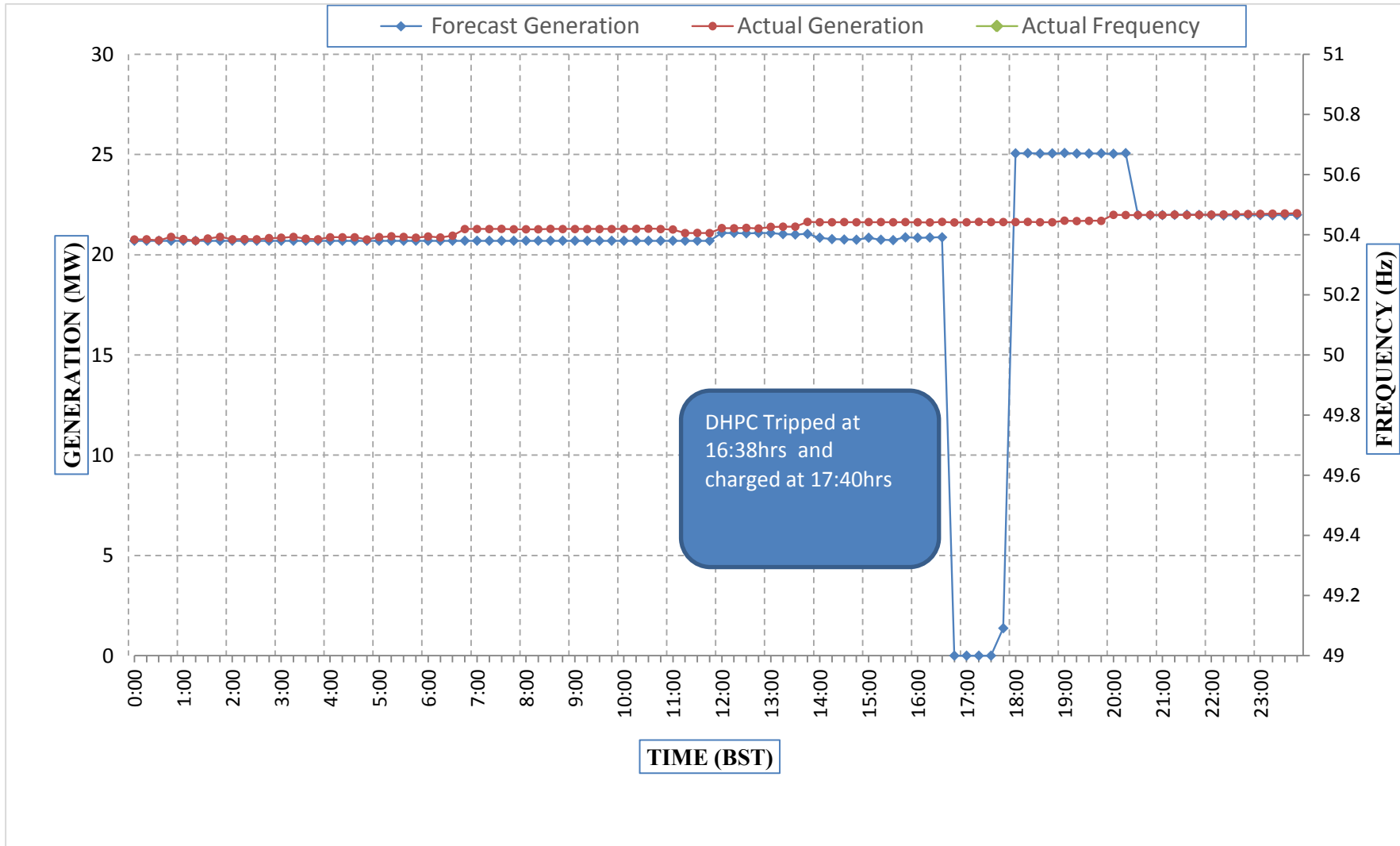
Bhutan Power Corporation Ltd.
Bhutan Power System Operator
Thimphu: Bhutan



Message No.: Enter your message number
From: Shift In-charge, Control Room

Date: 24-Jan-18
Time: 12:33

Forecast Generation & Actual Generation of Dagachhu(23-Jan-2018).



Yours faithfully,
Karma Choden