



འབྲུག་གླིང་མེ་ལམ་འཛིན།

Bhutan Power Corporation Ltd.
Bhutan Power System Operator
Thimphu: Bhutan



Message No.: Enter your message number
From: Shift In-charge, Control Room

Date: 22-Jan-18
Time: 13:09

To
Managing Director, BPC. Email: gemtshering@bpc.bt
Director, O&MD, DGPC. Email: director.omb@drukgreen.com
General Manager, TD, BPC. Email: ktobgye@bpc.bt
General Manager, DCSD, BPC. Email: sandeeprai@bpc.bt

Sub: **Load Generation Balance Report of Yesterday (21-Jan-2018).**

Hours (BST)	Forecast		Actual		Hours (BST)	Forecast		Actual	
	Generation	Load	Generation	Load		Generation	Load	Generation	Load
0:00	309.60	230.80	208.66	244.91	12:00	309.60	291.60	422.52	287.25
0:15	309.60	221.70	208.66	246.30	12:15	309.60	293.40	425.24	291.45
0:30	309.60	219.20	208.66	245.46	12:30	309.60	292.60	425.00	287.67
0:45	309.60	217.10	208.66	255.99	12:45	309.60	286.20	423.55	276.86
1:00	309.60	216.10	260.22	256.19	13:00	309.60	283.50	422.55	266.70
1:15	309.60	213.90	261.52	259.58	13:15	309.60	285.20	322.34	266.20
1:30	309.60	213.90	297.66	256.59	13:30	309.60	285.80	322.90	280.42
1:45	309.60	215.40	311.01	255.04	13:45	309.60	285.30	322.06	277.67
2:00	309.60	218.40	311.21	249.30	14:00	309.60	282.70	322.42	277.54
2:15	309.60	215.50	313.62	253.46	14:15	309.60	277.40	323.40	279.00
2:30	309.60	215.50	412.28	254.66	14:30	309.60	274.10	323.20	276.78
2:45	309.60	214.00	313.99	244.26	14:45	309.60	275.90	323.34	282.29
3:00	309.60	212.40	313.02	244.55	15:00	309.60	274.20	323.40	284.29
3:15	309.60	211.80	313.69	239.77	15:15	309.60	275.50	323.44	283.17
3:30	309.60	218.10	312.66	254.85	15:30	309.60	276.00	323.58	283.79
3:45	309.60	222.80	311.70	259.21	15:45	309.60	272.90	324.44	279.05
4:00	309.60	222.30	313.26	258.36	16:00	309.60	273.40	323.59	275.16
4:15	309.60	223.20	410.07	253.82	16:15	309.60	277.90	323.00	278.95
4:30	309.60	236.10	414.23	258.18	16:30	309.60	283.60	323.30	277.38
4:45	309.60	228.70	412.03	255.00	16:45	309.60	288.00	325.18	289.13
5:00	309.60	231.80	411.97	252.36	17:00	323.60	294.80	324.17	292.67
5:15	309.60	240.20	414.98	256.47	17:15	323.60	301.50	338.65	302.14
5:30	309.60	233.30	415.45	269.00	17:30	323.60	308.60	337.87	306.50
5:45	309.60	243.00	415.57	254.38	17:45	323.60	317.00	338.30	309.63
6:00	323.60	259.00	415.16	272.32	18:00	323.60	327.20	338.29	328.45
6:15	323.60	260.20	413.55	274.88	18:15	323.60	331.80	337.81	336.79
6:30	323.60	264.00	428.28	278.86	18:30	323.60	333.60	337.77	340.39
6:45	323.60	274.70	430.47	285.08	18:45	323.60	331.70	337.48	344.05
7:00	323.60	292.70	427.65	289.73	19:00	323.60	330.70	336.91	335.30
7:15	323.60	295.20	427.38	280.68	19:15	323.60	328.10	337.56	339.73
7:30	323.60	301.90	430.61	293.29	19:30	323.60	327.20	338.04	326.20
7:45	323.60	288.60	430.02	294.90	19:45	323.60	322.80	315.95	343.05
8:00	323.60	252.40	431.34	296.48	20:00	323.60	322.70	317.37	347.81
8:15	323.60	234.80	433.76	298.22	20:15	323.60	321.20	317.02	342.84
8:30	323.60	234.80	433.14	307.52	20:30	323.60	318.50	340.99	314.25
8:45	323.60	267.30	433.37	303.19	20:45	323.60	315.60	435.86	306.70
9:00	323.60	298.90	435.31	298.08	21:00	323.60	311.20	433.68	306.20
9:15	309.60	324.00	434.14	300.92	21:15	309.60	317.30	416.28	304.78
9:30	309.60	310.10	422.13	298.59	21:30	309.60	314.60	413.01	301.53
9:45	309.60	300.70	423.13	294.17	21:45	309.60	309.90	415.71	284.38
10:00	309.60	297.00	420.77	289.74	22:00	309.60	305.20	413.62	269.51
10:15	309.60	291.00	423.38	272.55	22:15	309.60	300.70	414.32	267.30
10:30	309.60	290.60	421.95	284.92	22:30	309.60	289.30	376.05	255.96
10:45	309.60	288.60	421.52	290.73	22:45	309.60	279.30	375.09	260.41
11:00	309.60	288.30	421.88	287.55	23:00	309.60	263.60	375.25	253.96
11:15	309.60	291.70	422.08	296.20	23:15	309.60	250.00	339.28	251.74
11:30	309.60	296.30	422.87	297.57	23:30	309.60	247.10	337.14	245.18
11:45	309.60	294.10	422.34	298.54	23:45	309.60	242.40	336.48	247.18

Yours faithfully
Jangchuk Selden

Coincidental peak load of Day(Last year):	
274.64 MW	21-Jan-17
Maximum Load till date:	
362.09MW	14-Nov-17



འབྲུག་གྲོག་མེ་ལས་འཛིན།

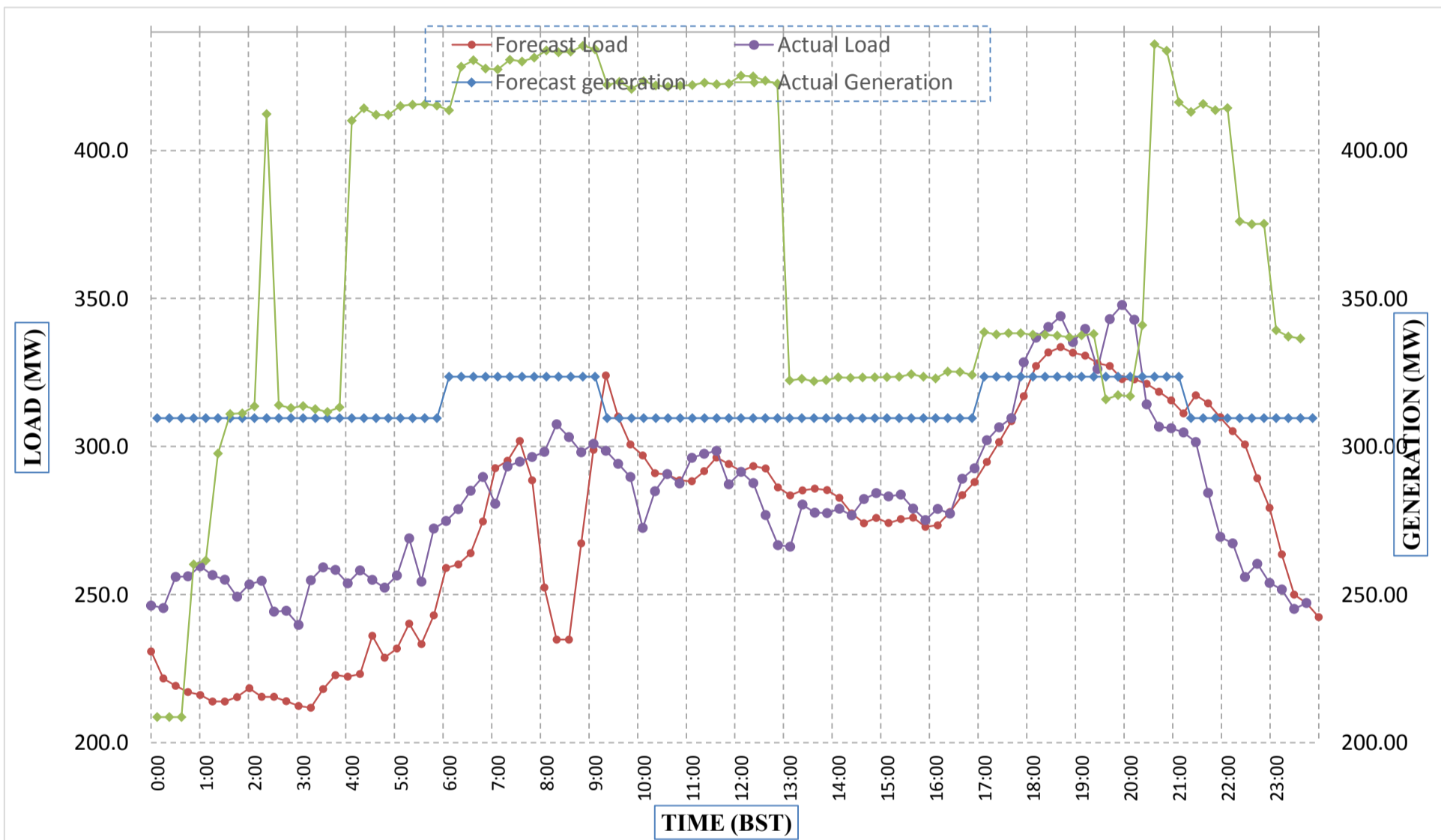
Bhutan Power Corporation Ltd.
 Bhutan Power System Operator
 Thimphu: Bhutan



Message No.: Enter your message number
 From: Shift In-charge, Control Room

Date: 22-Jan-18
 Time: 13:09

Forecast Generation & Load with Actual Generation & Load (21-Jan-2018).



Yours faithfully,
 Jangchuk Selden

	MW	Coincidental peak load of Day(Last year):	
Peak Co-incident Generation(21-Jan-2018).	435.86	274.64 MW	21-Jan-17
Peak Co-incident Load(21-Jan-2018).	347.81		
		Maximum Load till date:	
		362.09MW	14-Nov-17

Telephone: +975-02335631; Fax: +975-02335632; Email: bhutansystemoperator@bpc.bt; www.bpc.bt



འབྲུག་གླིང་མི་ལས་འཛིན།

Bhutan Power Corporation Ltd.
Bhutan Power System Operator
Thimphu: Bhutan



Message No.: Enter your message number
From: Shift In-charge, Control Room

Date: 22-Jan-18
Time: 13:09

To
Managing Director, BPC. Email: gemtshering@bpc.bt
Director, O&MD, DGPC. Email: director.umd@drukgreen.com
General Manager, TD, BPC. Email: thinleygyeltshen@bpc.bt
General Manager, DCSD, BPC. Email: sandeeprai@bpc.bt

Sub: Load Generation Balance Report of Today (22-Jan-2018).

Hours (BST)	Forecast		Actual	
	Generation	Load	Generation	Load
0:00	291.90	240.80	336.68	230.42
0:15	291.90	232.80	336.31	239.53
0:30	291.90	230.10	327.85	246.74
0:45	291.90	225.30	317.32	247.47
1:00	291.90	224.30	316.62	246.75
1:15	291.90	217.00	316.25	244.95
1:30	291.90	218.60	316.70	238.90
1:45	291.90	213.50	316.37	250.33
2:00	291.90	211.60	316.58	249.04
2:15	291.90	207.90	316.04	249.72
2:30	291.90	205.20	314.71	248.56
2:45	291.90	206.10	316.01	253.36
3:00	291.90	210.70	314.88	250.47
3:15	291.90	215.00	314.63	256.23
3:30	291.90	222.60	311.00	252.85
3:45	291.90	227.60	311.74	254.20
4:00	291.90	227.90	309.12	252.64
4:15	291.90	228.40	308.87	255.10
4:30	291.90	238.90	308.80	257.34
4:45	291.90	235.50	292.63	240.29
5:00	291.90	238.00	291.75	245.18
5:15	291.90	244.50	307.80	256.56
5:30	291.90	238.70	306.50	269.73
5:45	291.90	247.40	306.91	270.93
6:00	292.20	258.80	307.20	269.41
6:15	306.50	258.30	307.57	280.50
6:30	306.50	265.00	309.15	280.72
6:45	306.50	275.20	307.45	291.01
7:00	306.50	291.50	308.47	303.30
7:15	306.50	296.20	322.00	303.85
7:30	306.50	302.40	307.16	309.45
7:45	306.50	292.10	320.34	312.43
8:00	306.50	263.30	322.39	311.98
8:15	306.50	248.00	320.46	311.20
8:30	306.50	245.00	322.83	315.21
8:45	306.50	268.10	322.92	305.21
9:00	306.50	306.10	322.59	297.38

Coincidental peak load of Day(Last year):	
274.77 MW	22-Jan-17

Maximum Load till date:	
362.09MW	14-Nov-17

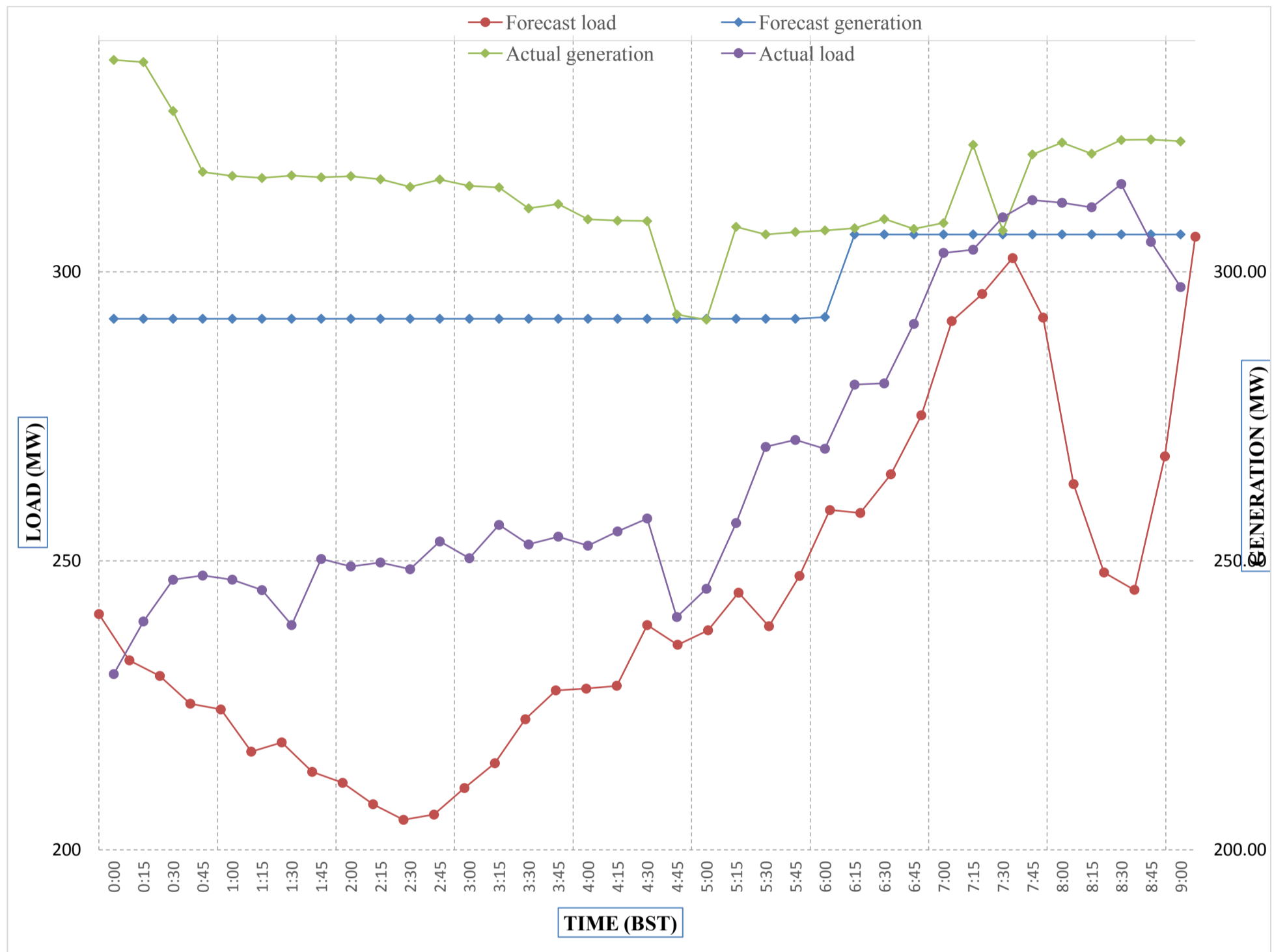
Yours faithfully,
Jangchuk Selden



Message No.: Enter your message number
 From: Shift In-charge, Control Room

Date: 22-Jan-18
 Time: 13:09

Forecast Generation & Load with Actual Generation & Load of Today from 00:00hrs to 09:00hrs(22-Jan-2018).



Yours faithfully Jangchuk Selden



འབྲུག་རྒྱལ་ཁོག་གི་འགྲུལ་རྒྱུ་ལས་ཁུངས་ལ.ལ.
Bhutan Power Corporation Ltd.
Bhutan Power System Operator
Thimphu: Bhutan



Message No.: Enter your message number **Date:** 22-Jan-18
From: Shift In-charge, Control Room **Time:** 13:09

To
 Managing Director, BPC. Email: gemtshering@bpc.bt
 Director, O&MD, DGPC. Email: director.umd@drukgreen.com
 General Manager, TD, BPC. Email: ktobgye@bpc.bt
 Advisor, BPC. Email: bharattamang@bpc.bt

Sub: Load Generation Balance Report of Tomorrow (23-Jan-2018).

Hours (BST)	Forecast		Hours (BST)	Forecast	
	Generation	Load		Generation	Load
0:00	333.50	260.50	12:00	333.50	287.00
0:15	333.50	262.40	12:15	333.50	290.20
0:30	333.50	255.90	12:30	333.50	288.60
0:45	333.50	250.90	12:45	333.50	282.90
1:00	333.50	239.30	13:00	333.80	279.10
1:15	328.30	228.30	13:15	333.80	278.70
1:30	330.50	230.50	13:30	333.80	281.50
1:45	324.80	224.80	13:45	333.80	283.20
2:00	317.90	217.90	14:00	333.50	282.20
2:15	311.20	211.20	14:15	333.50	280.70
2:30	309.60	209.60	14:30	333.50	278.20
2:45	305.80	205.80	14:45	333.50	281.30
3:00	308.20	208.20	15:00	333.50	280.30
3:15	312.00	212.00	15:15	333.50	280.10
3:30	321.20	221.20	15:30	333.50	279.20
3:45	332.00	232.00	15:45	333.50	276.80
4:00	332.50	232.50	16:00	333.50	276.00
4:15	332.00	232.00	16:15	333.50	279.10
4:30	333.50	241.80	16:30	333.80	286.10
4:45	333.50	238.00	16:45	333.80	289.60
5:00	333.50	241.90	17:00	349.60	295.30
5:15	333.50	247.60	17:15	349.60	303.40
5:30	333.50	245.50	17:30	349.60	309.40
6:45	333.50	250.60	17:45	349.20	316.60
6:00	349.20	264.90	18:00	349.20	329.20
6:15	349.20	268.60	18:15	349.20	334.70
6:30	349.20	270.20	18:30	349.20	337.10
6:45	349.20	279.10	18:45	349.20	333.30
7:00	349.20	291.80	19:00	349.20	335.10
7:15	349.20	295.30	19:15	349.20	331.80
7:30	349.20	307.60	19:30	349.20	328.30
7:45	349.20	282.80	19:45	349.20	328.90
8:00	349.20	250.60	20:00	349.20	329.40
8:15	336.80	236.80	20:15	349.20	321.70
8:30	349.20	265.60	20:30	351.90	315.70
8:45	349.20	303.60	20:45	351.90	313.30
9:00	333.50	314.40	21:00	336.20	311.40
9:15	333.50	314.30	21:15	336.20	332.70
9:30	333.50	304.20	21:30	336.20	327.20
9:45	333.50	296.70	21:45	336.20	302.70
10:00	333.50	292.70	22:00	336.20	295.60
10:15	333.50	284.80	22:15	336.20	291.00
10:30	345.80	287.60	22:30	336.20	287.90
10:45	345.80	286.80	22:45	336.20	284.10
11:00	345.80	287.10	23:00	333.50	279.00
11:15	345.80	286.50	23:15	333.50	270.00
11:30	345.80	293.10	23:30	333.50	269.40
11:45	345.80	290.70	23:45	333.50	267.70

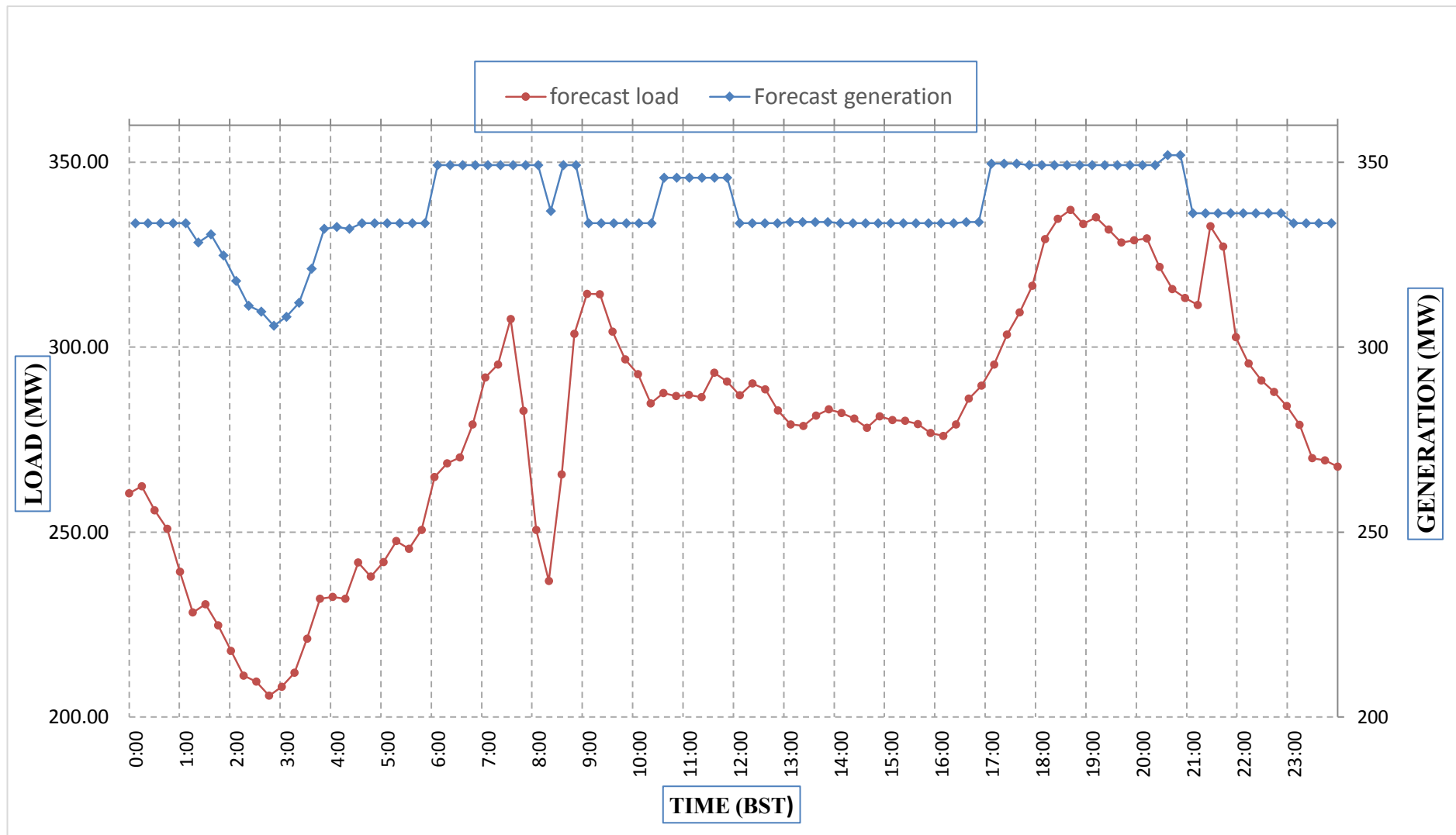
Yours faithfully,
 Jangchuk Selden



Message No.: Enter your message number
 From: Shift In-charge, Control Room

Date: 22-Jan-18
 Time: 13:09

Forecast Generation & Load Forecast for Tomorrow (23-Jan-2018).



Yours faithfully,
 Jangchuk Selden

	MW
Scheduled Peak Generation(23-Jan-2018).	351.90
Forecast Peak Load(23-Jan-2018).	337.10



འབྲུག་རྒྱལ་ཁོ་ལས་འཛིན།

Bhutan Power Corporation Ltd.
Bhutan Power System Operator
Thimphu: Bhutan



Message No.:

Enter your message number

Date: 22-Jan-18

From:

Shift In-charge, Control Room

Time: 13:09

To

Managing Director, BPC. Email: gemtshering@bpc.bt
Director, O&MD, DGPC. Email: director.umd@drukgreen.com
General Manager, TD, BPC. Email: ktobgye@bpc.bt
Advisor, BPC. Email: bharattamang@bpc.bt

Sub:

Forecast Generation and Actual Generation of Dagachhu (21-Jan-2018).

Hours (BST)	Actual Frequency	Forecast Generation	Actual Generation	Hours (BST)	Actual Frequency	Forecast Generation	Actual Generation
0:00		21.70	21.02	12:00		21.70	21.49
0:15		21.70	21.02	12:15		21.70	21.49
0:30		21.70	21.04	12:30		21.70	21.51
0:45		21.70	21.03	12:45		21.70	21.49
1:00		21.70	21.02	13:00		21.70	21.52
1:15		21.70	21.02	13:15		21.70	21.51
1:30		21.70	21.01	13:30		21.70	21.51
1:45		21.70	21.30	13:45		21.70	21.50
2:00		21.70	21.32	14:00		21.70	21.53
2:15		21.70	21.31	14:15		21.70	21.52
2:30		21.70	21.33	14:30		21.70	21.50
2:45		21.70	21.31	14:45		21.70	21.48
3:00		21.70	21.31	15:00		21.70	21.51
3:15		21.70	21.30	15:15		21.70	21.51
3:30		21.70	21.30	15:30		21.70	21.51
3:45		21.70	21.30	15:45		21.70	21.50
4:00		21.70	21.33	16:00		21.70	21.33
4:15		21.70	21.31	16:15		21.70	21.32
4:30		21.70	21.30	16:30		21.70	21.31
4:45		21.70	21.30	16:45		21.70	21.29
5:00		21.70	21.31	17:00		21.70	21.28
5:15		21.70	21.31	17:15		21.70	21.29
5:30		21.70	21.33	17:30		21.70	21.31
6:45		21.70	21.32	17:45		21.70	21.29
6:00		21.70	21.32	18:00		21.70	21.30
6:15		21.70	21.30	18:15		21.70	21.30
6:30		21.70	21.30	18:30		21.70	21.31
6:45		21.70	21.29	18:45		21.70	20.82
7:00		21.70	21.30	19:00		21.70	20.76
7:15		21.70	21.29	19:15		21.70	20.79
7:30		21.70	21.30	19:30		21.70	20.89
7:45		21.70	21.30	19:45		21.70	0.00
8:00		21.70	21.30	20:00		21.70	0.00
8:15		21.70	21.31	20:15		21.70	0.14
8:30		21.70	21.29	20:30		21.70	24.24
8:45		21.70	21.31	20:45		21.70	30.07
9:00		21.70	21.29	21:00		21.70	28.02
9:15		21.70	21.30	21:15		21.70	25.03
9:30		21.70	21.31	21:30		21.70	22.01
9:45		21.70	21.30	21:45		21.70	22.00
10:00		21.70	21.31	22:00		21.70	21.97
10:15		21.70	21.30	22:15		21.70	22.00
10:30		21.70	21.28	22:30		21.70	21.99
10:45		21.70	21.29	22:45		21.70	21.99
11:00		21.70	21.30	23:00		21.70	22.01
11:15		21.70	21.48	23:15		21.70	22.00
11:30		21.70	21.49	23:30		21.70	21.98
11:45		21.70	21.50	23:45		21.70	22.00

Note: Not able to get the frequency due to multifunction controller Card damaged.

Yours faithfully,
Jangchuk Selden



འབྲུག་གྲོག་མེ་ལས་འཛིན།

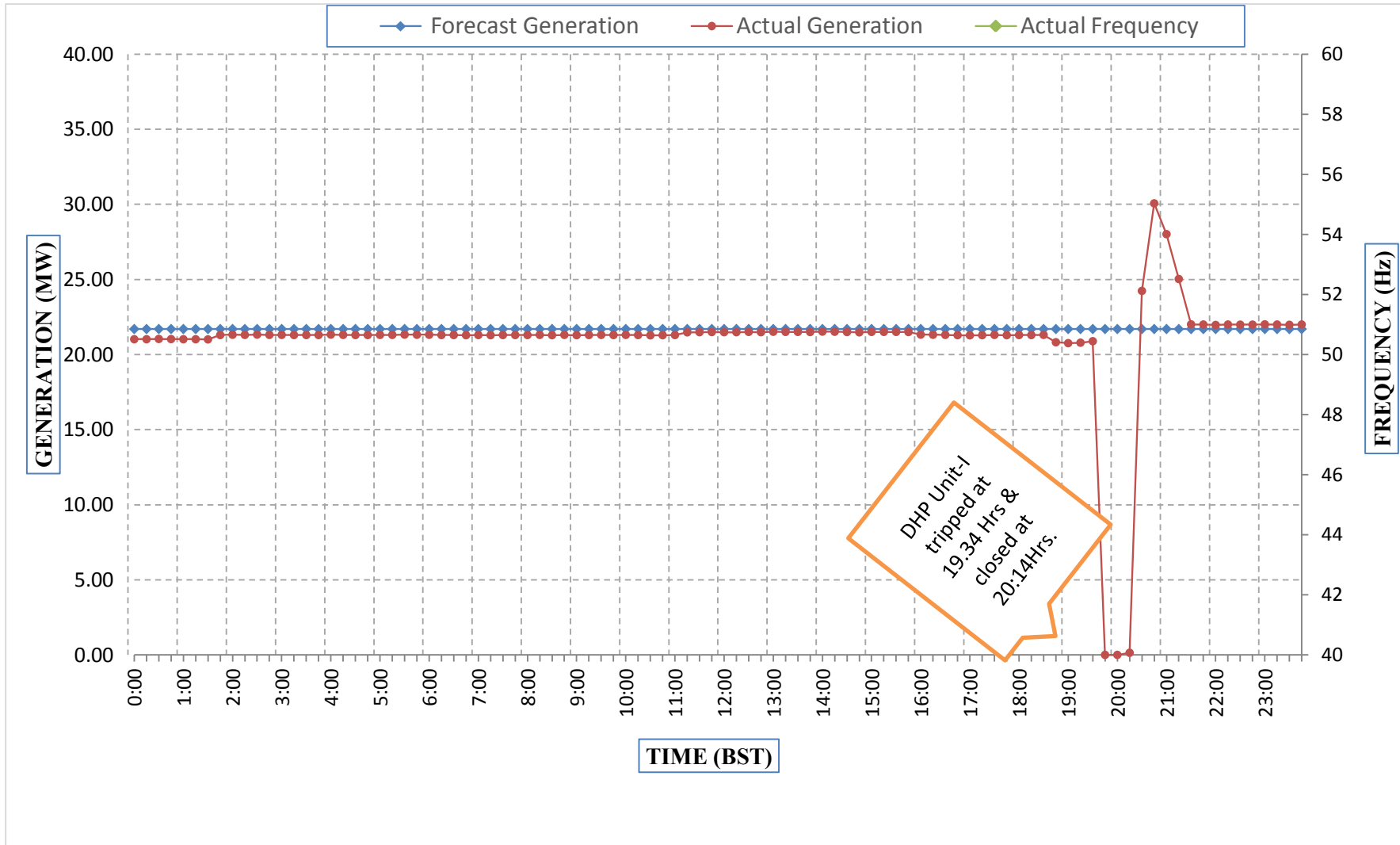
Bhutan Power Corporation Ltd.
Bhutan Power System Operator
Thimphu: Bhutan



Message No.: Enter your message number
From: Shift In-charge, Control Room

Date: 22-Jan-18
Time: 13:09

Forecast Generation & Actual Generation of Dagachhu(21-Jan-2018).



Yours faithfully,
Jangchuk Selden