



འབྲུག་གློག་ཐོ་ལས་འཛིན།

Bhutan Power Corporation Ltd.
Bhutan Power System Operator
Thimphu: Bhutan



Message No.: Enter your message number
From: Shift In-charge, Control Room

Date: 21-Jan-18
Time: 12:40

To
Managing Director, BPC. Email: gemtshering@bpc.bt
Director, O&MD, DGPC. Email: director.omb@drukgreen.com
General Manager, TD, BPC. Email: ktobgye@bpc.bt
General Manager, DCSD, BPC. Email: sandeeprai@bpc.bt

Sub: **Load Generation Balance Report of Yesterday (20-Jan-2018).**

Hours (BST)	Forecast		Actual		Hours (BST)	Forecast		Actual	
	Generation	Load	Generation	Load		Generation	Load	Generation	Load
0:00	243.60	219.60	319.60	265.54	12:00	315.10	291.10	334.60	275.73
0:15	235.20	211.20	318.82	264.19	12:15	316.30	292.30	317.70	278.31
0:30	233.50	209.50	318.61	262.58	12:30	316.20	292.20	312.74	284.68
0:45	227.30	203.30	322.00	259.57	12:45	309.80	285.80	313.46	276.39
1:00	223.70	199.70	319.98	256.25	13:00	308.00	284.00	314.69	280.20
1:15	222.20	198.20	319.38	253.30	13:15	307.70	283.70	315.05	274.93
1:30	222.40	198.40	319.18	247.95	13:30	309.30	285.30	315.91	281.32
1:45	227.00	203.00	319.48	244.65	13:45	306.70	282.70	316.16	281.23
2:00	230.00	206.00	320.42	240.15	14:00	304.50	280.50	315.09	289.02
2:15	227.30	203.30	319.13	245.90	14:15	300.50	276.50	316.22	284.95
2:30	230.70	206.70	319.80	251.16	14:30	299.40	275.40	316.54	287.49
2:45	229.80	205.80	319.57	250.61	14:45	301.30	277.30	317.55	290.27
3:00	230.00	206.00	320.74	250.24	15:00	300.80	276.80	321.02	290.97
3:15	229.70	205.70	321.50	248.05	15:15	300.70	276.70	327.60	290.50
3:30	240.30	216.30	321.17	241.81	15:30	301.00	277.00	327.17	288.49
3:45	244.00	220.00	323.84	244.56	15:45	299.20	275.20	317.12	285.05
4:00	250.20	226.20	320.73	246.90	16:00	298.20	274.20	312.55	281.73
4:15	258.40	234.40	320.83	247.75	16:15	305.20	281.20	316.70	289.28
4:30	269.40	245.40	320.65	245.66	16:30	309.10	285.10	306.20	296.95
4:45	269.80	245.80	319.34	249.94	16:45	314.40	290.40	306.55	289.93
5:00	273.20	249.20	320.57	253.46	17:00	321.10	297.10	308.02	303.99
5:15	277.40	253.40	309.51	252.84	17:15	326.70	302.70	307.78	309.89
5:30	278.10	254.10	310.55	254.82	17:30	334.20	310.20	312.88	314.98
5:45	283.10	259.10	308.84	257.41	17:45	342.60	320.00	326.21	323.33
6:00	289.10	265.10	308.82	260.12	18:00	355.00	331.00	327.48	332.88
6:15	289.80	265.80	309.87	257.81	18:15	359.60	335.60	329.20	337.34
6:30	294.00	270.00	323.21	266.93	18:30	360.50	336.50	330.15	341.48
6:45	299.00	275.00	323.44	275.27	18:45	358.90	334.90	328.46	331.41
7:00	309.30	285.30	324.22	285.55	19:00	356.10	332.10	327.04	333.13
7:15	317.70	293.70	323.48	289.58	19:15	354.10	330.10	327.45	339.99
7:30	325.70	301.70	322.52	297.90	19:30	353.90	329.90	326.48	327.59
7:45	325.70	301.70	324.20	300.77	19:45	348.70	324.70	326.29	329.49
8:00	313.90	289.90	322.42	301.66	20:00	349.30	325.30	325.26	324.19
8:15	303.00	279.00	324.62	299.36	20:15	348.50	324.50	325.09	318.11
8:30	269.00	245.00	323.38	298.21	20:30	342.60	322.40	325.68	318.58
8:45	259.00	235.00	324.82	303.38	20:45	342.60	320.30	326.25	313.01
9:00	280.10	256.10	325.11	300.63	21:00	339.40	315.40	327.05	309.09
9:15	353.70	329.70	311.16	299.50	21:15	342.60	323.50	313.26	395.16
9:30	333.90	309.90	310.48	296.91	21:30	342.60	321.40	303.62	390.90
9:45	322.80	298.80	317.86	286.84	21:45	340.70	316.70	138.65	296.88
10:00	318.00	294.00	319.18	281.26	22:00	338.60	314.60	138.50	289.81
10:15	315.60	291.60	329.38	272.38	22:15	335.50	311.50	138.25	286.85
10:30	316.20	292.20	339.30	273.30	22:30	319.50	295.50	137.85	278.92
10:45	314.70	290.70	363.41	272.65	22:45	310.00	286.00	128.48	276.89
11:00	314.50	290.50	369.58	276.92	23:00	289.90	265.90	126.89	272.07
11:15	313.80	289.80	373.79	266.19	23:15	273.60	249.60	119.99	275.20
11:30	319.00	295.00	295.34	276.97	23:30	262.00	238.00	112.75	249.40
11:45	316.70	292.70	294.25	276.92	23:45	257.40	233.40	97.04	248.03

Yours faithfully
Tshering Deki

Coincidental peak load of Day(Last year):	
283.96	20-Jan-17
Maximum Load till date:	
362.09	14-Nov-17



འབྲུག་རྒྱལ་ཁོ་ལས་འཛིན།

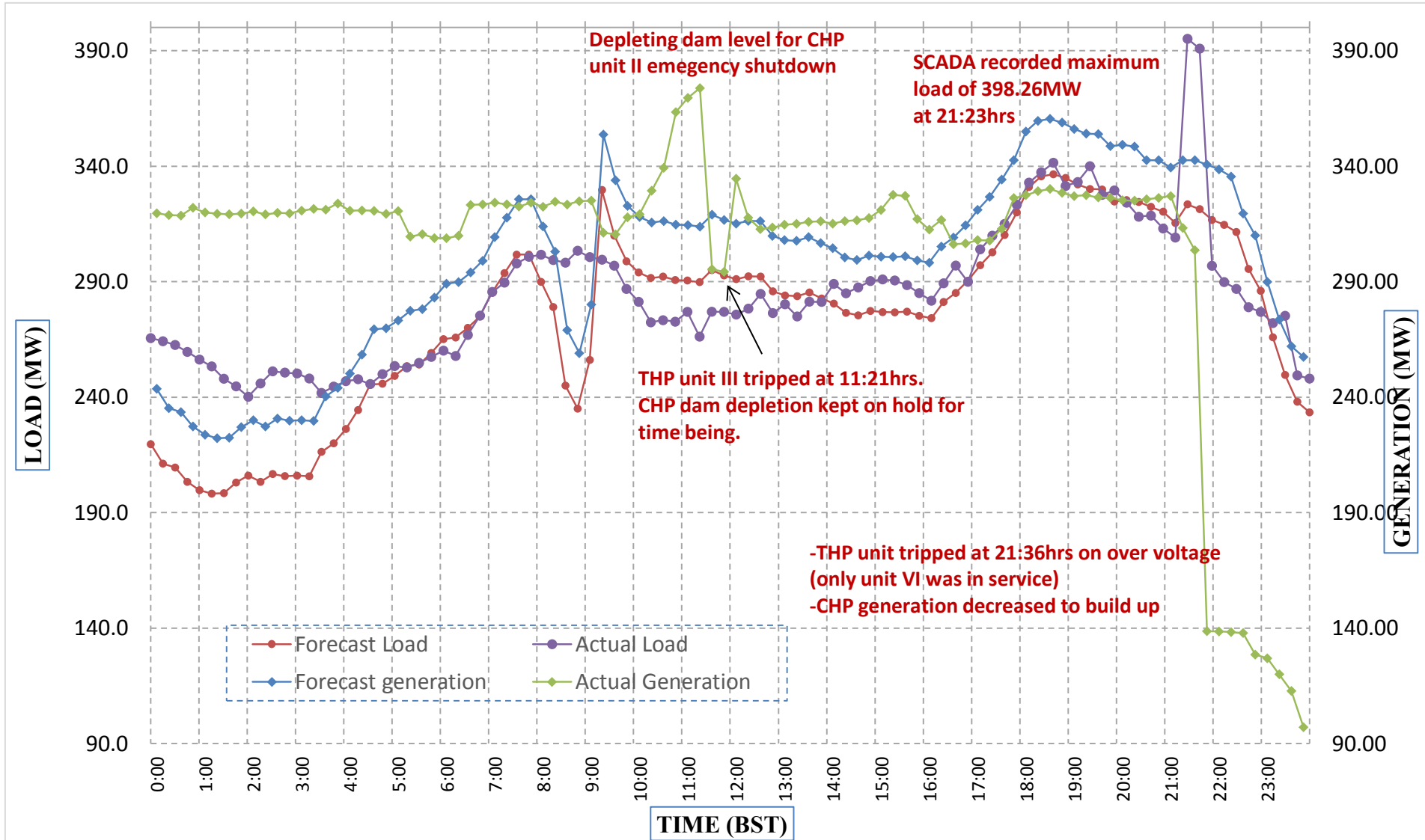
Bhutan Power Corporation Ltd.
 Bhutan Power System Operator
 Thimphu: Bhutan



Message No.: Enter your message number
 From: Shift In-charge, Control Room

Date: 21-Jan-18
 Time: 12:40

Forecast Generation & Load with Actual Generation & Load (20-Jan-2018).



Yours faithfully,
 Tshering Deki

	MW	Coincidental peak load of Day(Last year):	
Peak Co-incident Generation(20-Jan-2018).	373.79	283.96	20-Jan-17
Peak Co-incident Load(20-Jan-2018).	395.16		
		Maximum Load till date:	
		362.09	14-Nov-17

Telephone: +975-02335631; Fax: +975-02335632; Email: bhutansystemoperator@bpc.bt; www.bpc.bt



འབྲུག་གྲོག་མེ་ལས་འཛིན།

Bhutan Power Corporation Ltd.
Bhutan Power System Operator
Thimphu: Bhutan



Message No.: Enter your message number
From: Shift In-charge, Control Room

Date: 21-Jan-18
Time: 12:40

To
Managing Director, BPC. Email: gemtshering@bpc.bt
Director, O&MD, DGPC. Email: director.umd@drukgreen.com
General Manager, TD, BPC. Email: ktobgye@bpc.bt
General Manager, DCSD, BPC. Email: sandeeprai@bpc.bt

Sub: Load Generation Balance Report of Today (21-Jan-2018).

Hours (BST)	Forecast		Actual	
	Generation	Load	Generation	Load
0:00	309.60	230.80	94.73	244.91
0:15	309.60	221.70	94.06	246.30
0:30	309.60	219.20	94.39	245.46
0:45	309.60	217.10	208.66	255.99
1:00	309.60	216.10	260.22	256.19
1:15	309.60	213.90	261.52	259.58
1:30	309.60	213.90	297.66	256.59
1:45	309.60	215.40	311.01	255.04
2:00	309.60	218.40	311.21	249.30
2:15	309.60	215.50	313.62	253.46
2:30	309.60	215.50	412.28	254.66
2:45	309.60	214.00	313.99	244.26
3:00	309.60	212.40	313.02	244.55
3:15	309.60	211.80	313.69	239.77
3:30	309.60	218.10	312.66	254.85
3:45	309.60	222.80	311.70	259.21
4:00	309.60	222.30	313.26	258.36
4:15	309.60	223.20	410.07	253.82
4:30	309.60	236.10	414.23	258.18
4:45	309.60	228.70	412.03	255.00
5:00	309.60	231.80	411.97	252.36
5:15	309.60	240.20	414.98	256.47
5:30	309.60	233.30	415.45	269.00
5:45	309.60	243.00	415.57	254.38
6:00	323.60	259.00	415.16	272.32
6:15	323.60	260.20	413.55	274.88
6:30	323.60	264.00	428.28	278.86
6:45	323.60	274.70	430.47	285.08
7:00	323.60	292.70	427.65	289.73
7:15	323.60	295.20	427.38	280.68
7:30	323.60	301.90	430.61	293.29
7:45	323.60	288.60	430.02	294.90
8:00	323.60	252.40	431.34	296.48
8:15	323.60	234.80	433.76	298.22
8:30	323.60	234.80	433.14	307.52
8:45	323.60	267.30	433.37	303.19
9:00	323.60	298.90	435.31	298.08

Coincidental peak load of Day(Last year):	
274.64	21-Jan-18
264.71	
362.09	14-Nov-17

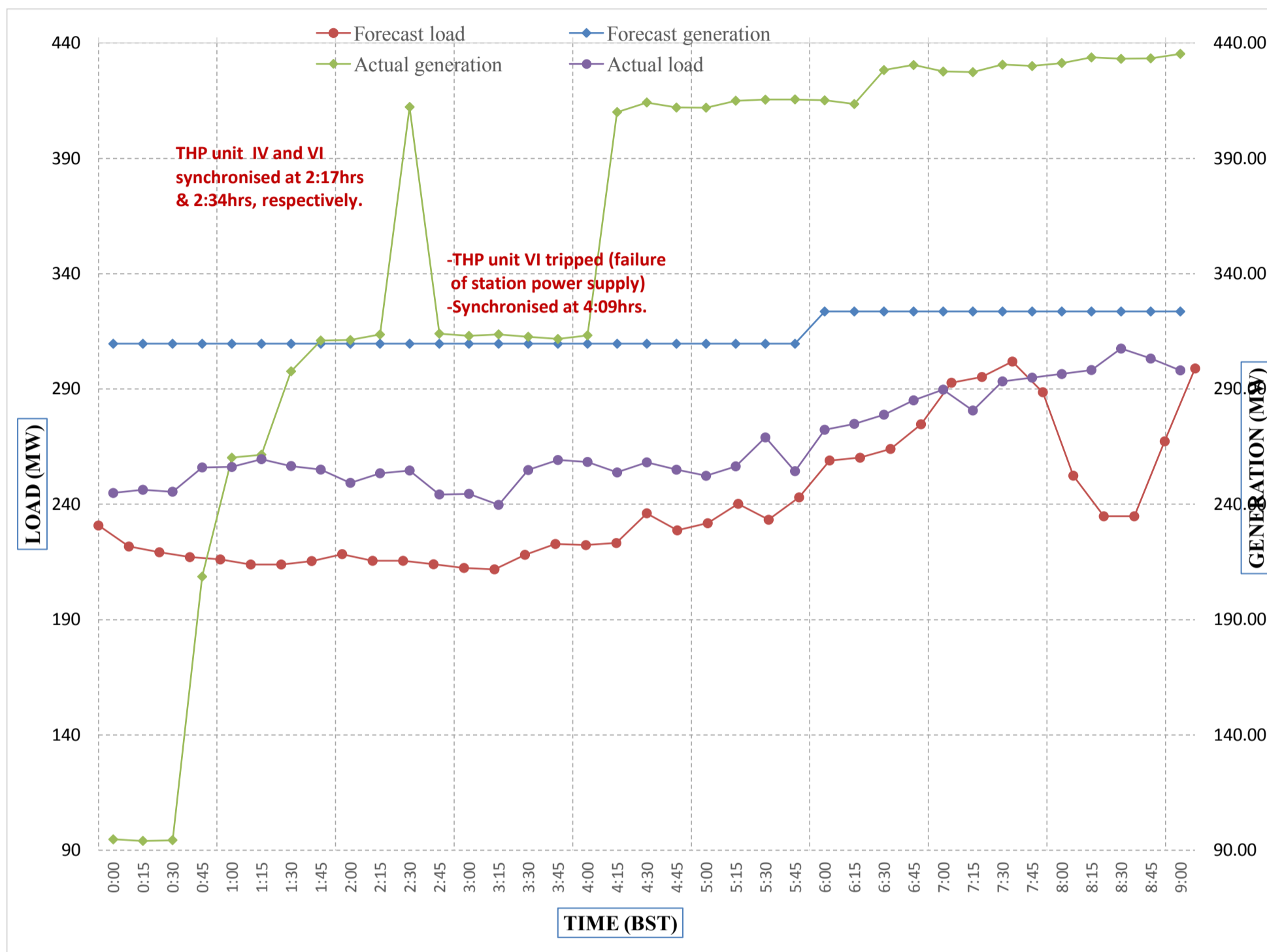
Yours faithfully,
Tshering Deki



Message No.: Enter your message number
 From: Shift In-charge, Control Room

21-Jan-18
 12:40

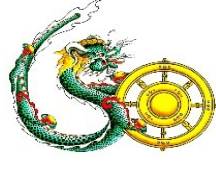
Forecast Generation & Load with Actual Generation & Load of Today from 00:00hrs to 09:00hrs(21-Jan-2018).



Yours faithfully
 Tshering Deki



འབྲུག་གྲོག་མོ་ལས་འཛིན།
Bhutan Power Corporation Ltd.
Bhutan Power System Operator
 Thimphu: Bhutan



Message No.: Enter your message number **Date:** 21-Jan-18
From: Shift In-charge, Control Room **Time:** 12:40

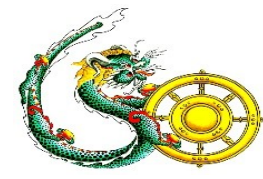
To
 Managing Director, BPC. Email: gemtshering@bpc.bt
 Director, O&MD, DGPC. Email: director.umd@drukgreen.com
 General Manager, TD, BPC. Email: ktobgye@bpc.bt
 Advisor, BPC. Email: bharattamang@bpc.bt

Sub: Load Generation Balance Report of Tomorrow (22-Jan-2018).

Hours (BST)	Forecast		Hours (BST)	Forecast	
	Generation	Load		Generation	Load
0:00	291.90	240.80	12:00	291.90	286.50
0:15	291.90	232.80	12:15	291.90	290.60
0:30	291.90	230.10	12:30	291.90	290.00
0:45	291.90	225.30	12:45	291.90	286.00
1:00	291.90	224.30	13:00	291.90	283.10
1:15	291.90	217.00	13:15	291.90	283.70
1:30	291.90	218.60	13:30	291.90	283.60
1:45	291.90	213.50	13:45	291.90	284.80
2:00	291.90	211.60	14:00	291.90	284.40
2:15	291.90	207.90	14:15	291.90	281.70
2:30	291.90	205.20	14:30	291.90	278.50
2:45	291.90	206.10	14:45	291.90	280.20
3:00	291.90	210.70	15:00	291.90	279.40
3:15	291.90	215.00	15:15	291.90	279.70
3:30	291.90	222.60	15:30	291.90	278.60
3:45	291.90	227.60	15:45	291.90	276.80
4:00	291.90	227.90	16:00	291.90	275.90
4:15	291.90	228.40	16:15	291.90	281.60
4:30	291.90	238.90	16:30	291.90	288.00
4:45	291.90	235.50	16:45	291.90	290.40
5:00	291.90	238.00	17:00	291.90	297.50
5:15	291.90	244.50	17:15	306.50	304.80
5:30	291.90	238.70	17:30	306.50	310.70
6:45	291.90	247.40	17:45	306.50	318.60
6:00	292.20	258.80	18:00	306.50	328.30
6:15	306.50	258.30	18:15	306.50	333.60
6:30	306.50	265.00	18:30	306.50	335.80
6:45	306.50	275.20	18:45	306.50	332.10
7:00	306.50	291.50	19:00	306.50	332.80
7:15	306.50	296.20	19:15	306.50	330.10
7:30	306.50	302.40	19:30	306.50	327.40
7:45	306.50	292.10	19:45	306.50	322.50
8:00	306.50	263.30	20:00	306.50	323.00
8:15	306.50	248.00	20:15	306.50	320.40
8:30	306.50	245.00	20:30	306.50	316.90
8:45	306.50	268.10	20:45	306.50	315.00
9:00	306.50	306.10	21:00	306.50	311.50
9:15	291.90	318.00	21:15	291.90	344.00
9:30	291.90	305.40	21:30	291.90	339.30
9:45	291.90	297.00	21:45	291.90	307.90
10:00	291.90	292.40	22:00	291.90	303.50
10:15	291.90	288.20	22:15	291.90	299.90
10:30	291.90	287.20	22:30	291.90	292.90
10:45	291.90	285.20	22:45	291.90	287.70
11:00	291.90	286.10	23:00	291.90	286.20
11:15	291.90	284.90	23:15	291.90	275.50
11:30	291.90	292.00	23:30	291.90	268.30
11:45	291.90	289.20	23:45	291.90	265.50

Yours faithfully,

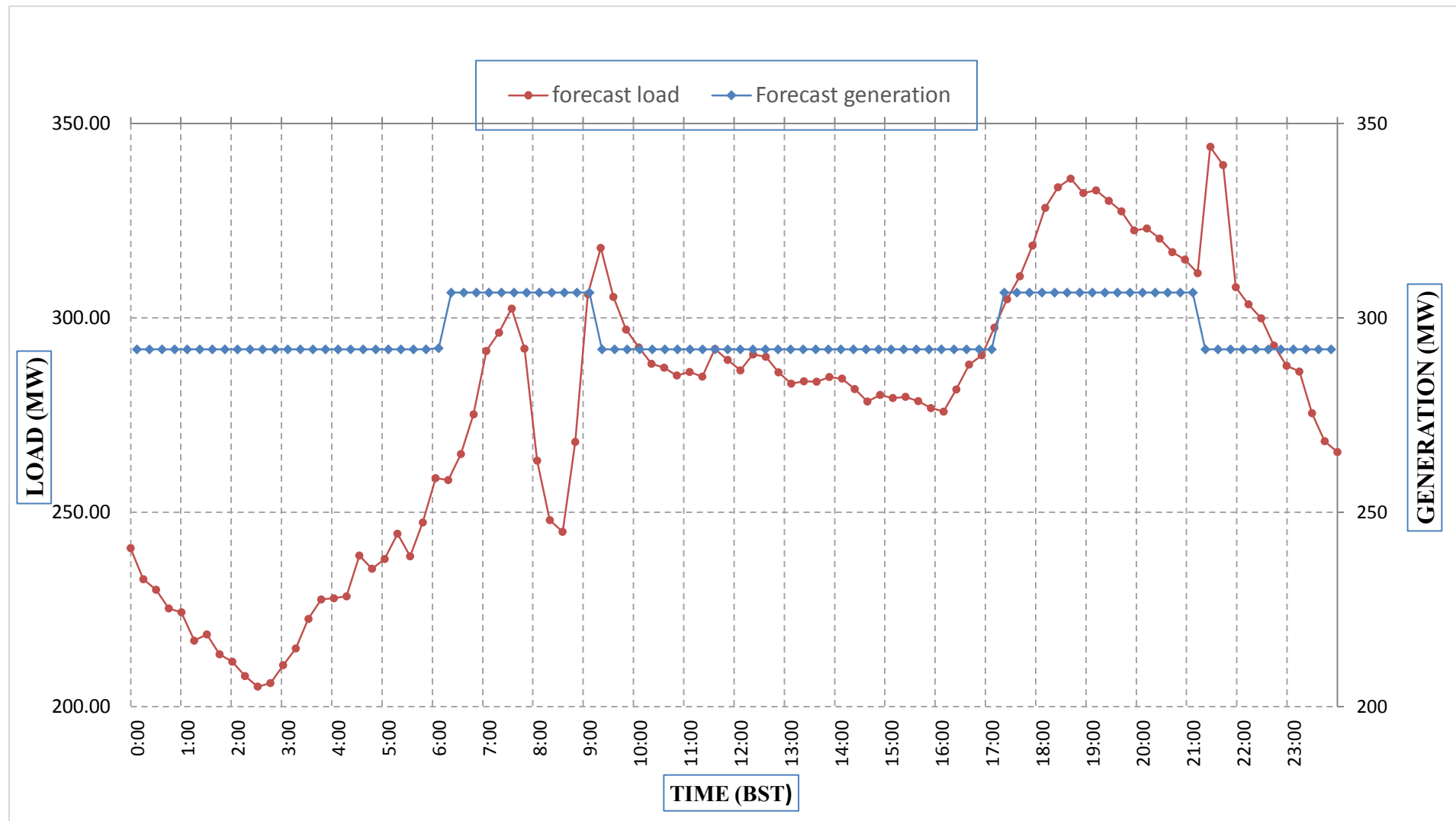
Tshering Deki



Message No.: Enter your message number
 From: Shift In-charge, Control Room

Date: 21-Jan-18
 Time: 12:40

Forecast Generation & Load Forecast for Tomorrow (22-Jan-2018).



Yours faithfully,
 Tshering Deki

	MW
Scheduled Peak Generation(22-Jan-2018).	306.50
Forecast Peak Load(22-Jan-2018).	344.00



Bhutan Power Corporation Ltd.
 Bhutan Power System Operator
 Thimphu: Bhutan

འབྲུག་གྲོགས་ཚོལ་ལས་འཁོར་ལེན།



Message No.: Enter your message number
 From: Shift In-charge, Control Room

Date: 21-Jan-18
 Time: 12:40

To
 Managing Director, BPC. Email: gemtshering@bpc.bt
 Director, O&MD, DGPC. Email: director.omb@drukgreen.com
 General Manager, TD, BPC. Email: ktobgye@bpc.bt
 Advisor, BPC. Email: bharattamang@bpc.bt

Sub: **Forecast Generation and Actual Generation of Dagachhu (20-Jan-2018).**

Hours (BST)	Actual Frequency	Forecast Generation	Actual Generation	Hours (BST)	Actual Frequency	Forecast Generation	Actual Generation
0:00	49.98	21.80	21.02	12:00	50.00	21.80	21.52
0:15	49.99	21.80	21.00	12:15	50.06	21.80	21.51
0:30	49.97	21.80	21.04	12:30	50.04	21.80	21.48
0:45	49.99	21.80	21.02	12:45	50.02	21.80	21.51
1:00	50.03	21.80	21.05	13:00	50.02	21.80	21.50
1:15	50.02	21.80	21.02	13:15	50.03	21.80	21.50
1:30	50.01	21.80	21.01	13:30	49.98	21.80	21.47
1:45	50.03	21.80	21.03	13:45	49.96	21.80	21.49
2:00	50.00	21.80	21.04	14:00	50.02	21.80	21.47
2:15	50.01	21.80	21.03	14:15	50.01	21.80	21.48
2:30	50.02	21.80	21.33	14:30	49.98	21.80	21.50
2:45	50.03	21.80	21.32	14:45	49.98	21.80	21.50
3:00	50.00	21.80	21.31	15:00	49.97	21.80	21.50
3:15	50.02	21.80	21.32	15:15	50.04	21.80	21.50
3:30	50.02	21.80	21.29	15:30	49.97	21.80	21.52
3:45	50.04	21.80	21.30	15:45	49.98	21.80	21.49
4:00	49.96	21.80	21.29	16:00	49.97	21.80	21.49
4:15	49.98	21.80	21.31	16:15	50.02	21.80	21.49
4:30	49.99	21.80	21.32	16:30	49.97	21.80	21.50
4:45	49.98	21.80	21.51	16:45	49.97	21.80	21.49
5:00	49.99	21.80	21.49	17:00	50.05	21.80	21.48
5:15	49.99	21.80	21.52	17:15	50.02	21.80	21.49
5:30	50.00	21.80	21.52	17:30	49.95	21.80	21.48
6:45	50.02	21.80	21.51	17:45	49.97	21.80	21.31
6:00	49.96	21.80	21.52	18:00	49.99	21.80	21.32
6:15	49.93	21.80	21.49	18:15	49.99	21.80	21.31
6:30	49.94	21.80	21.50	18:30	49.98	21.80	21.30
6:45	49.96	21.80	21.49	18:45	50.02	21.80	21.30
7:00	50.00	21.80	21.69	19:00	50.03	21.80	21.33
7:15	49.96	21.80	21.70	19:15	50.02	21.80	21.30
7:30	49.90	21.80	21.71	19:30	49.97	21.80	21.30
7:45	49.94	21.80	21.70	19:45	49.99	21.80	21.31
8:00	49.98	21.80	21.67	20:00	49.98	21.80	21.32
8:15	49.96	21.80	21.69	20:15	49.95	21.80	21.32
8:30	49.96	21.80	21.68	20:30	49.98	21.80	21.32
8:45	49.91	21.80	21.70	20:45	50.01	21.80	21.30
9:00	49.96	21.80	21.68	21:00	50.05	21.80	21.30
9:15	49.94	21.80	21.68	21:15	49.94	21.80	21.29
9:30	49.98	21.80	21.69	21:30	49.98	21.80	21.31
9:45	49.97	21.80	21.67	21:45	49.93	21.80	21.02
10:00	49.97	21.80	21.69	22:00	50.01	21.80	21.01
10:15	49.96	21.80	21.68	22:15	49.98	21.80	21.01
10:30	50.02	21.80	21.69	22:30	49.96	21.80	20.99
10:45	49.98	21.80	21.49	22:45	49.94	21.80	21.01
11:00	50.00	21.80	21.48	23:00	49.97	21.80	21.01
11:15	50.03	21.80	21.51	23:15	49.99	21.80	21.05
11:30	49.98	21.80	21.50	23:30	49.99	21.80	21.05
11:45	49.97	21.80	21.48	23:45	0.00	21.80	21.06

Yours faithfully,
 Tshering Deki



འབྲུག་རྒྱལ་ཁོ་ལས་འཛིན།

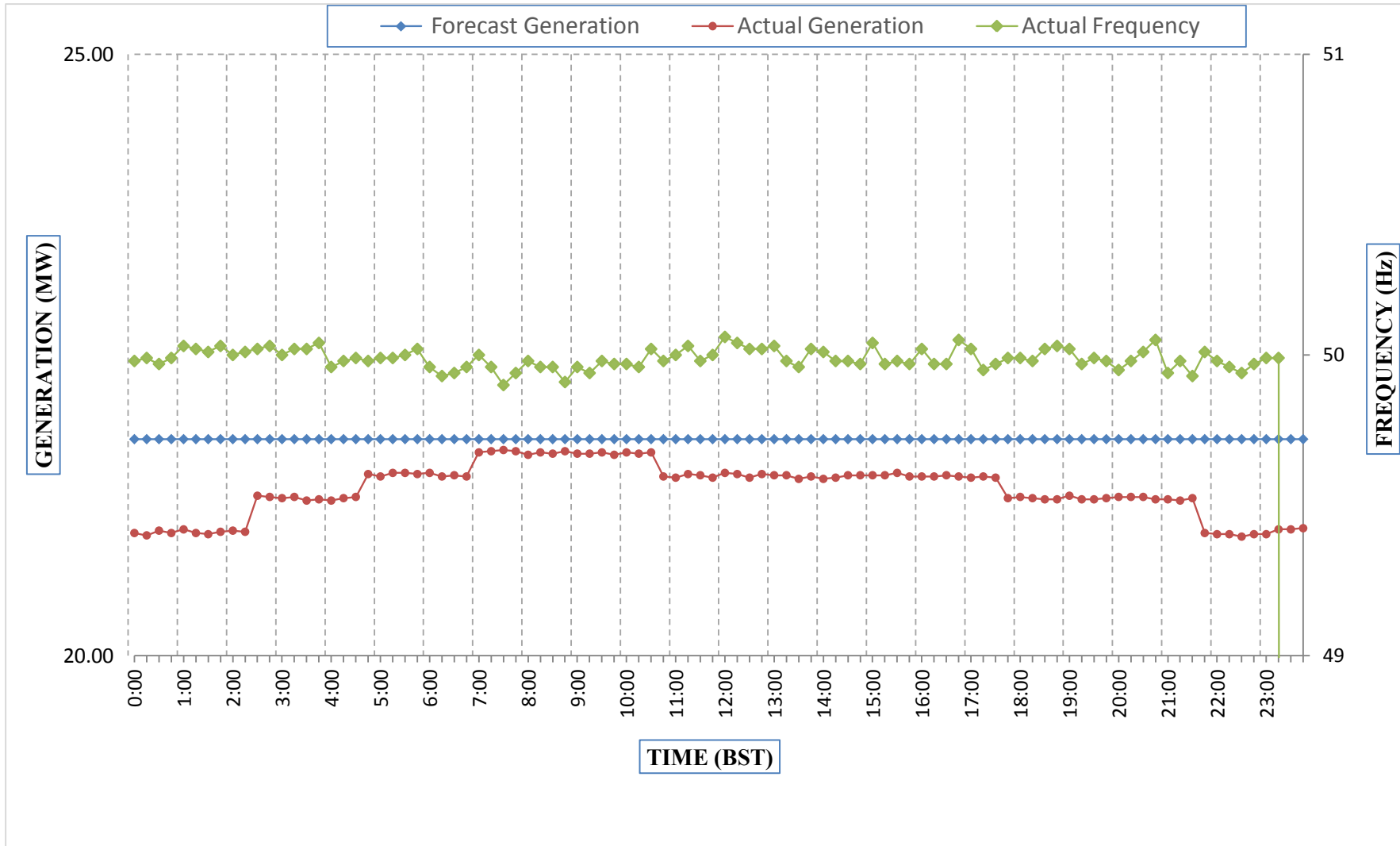
Bhutan Power Corporation Ltd.
Bhutan Power System Operator
Thimphu: Bhutan



Message No.: Enter your message number
From: Shift In-charge, Control Room

Date: 21-Jan-18
Time: 12:40

Forecast Generation & Actual Generation of Dagachhu(20-Jan-2018).



Yours faithfully,
Tshering Deki