



ཕྱག་ལུགས་ལེ་ལས་འཛིན།

Bhutan Power Corporation Ltd.
Bhutan Power System Operator
Thimphu: Bhutan



Message No.: Enter your message number
From: Shift In-charge, Control Room

Date: 20-Jan-18
Time: 12:22

To
Managing Director, BPC. Email: gemtshering@bpc.bt
Director, O&MD, DGPC. Email: director.omb@drukgreen.com
General Manager, TD, BPC. Email: ktobgye@bpc.bt
General Manager, DCSD, BPC. Email: sandeeprai@bpc.bt

Sub: **Load Generation Balance Report of Yesterday (19-Jan-2018).**

Hours (BST)	Forecast		Actual		Hours (BST)	Forecast		Actual	
	Generation	Load	Generation	Load		Generation	Load	Generation	Load
0:00	331.10	207.10	335.50	267.91	12:00	331.10	290.10	314.70	290.03
0:15	331.10	201.50	334.16	267.90	12:15	331.10	293.10	315.84	299.66
0:30	331.10	202.70	333.63	265.55	12:30	331.10	293.60	314.38	291.98
0:45	331.10	199.60	334.08	268.53	12:45	331.10	286.00	316.01	291.82
1:00	331.10	203.10	333.41	267.95	13:00	331.10	285.10	313.68	286.70
1:15	331.10	208.60	323.54	265.05	13:15	331.10	286.30	314.02	290.41
1:30	331.10	217.00	323.42	264.65	13:30	331.10	286.20	310.24	285.77
1:45	331.10	225.10	323.94	258.45	13:45	331.10	283.60	312.48	287.84
2:00	331.10	231.30	323.70	258.75	14:00	331.10	282.40	310.90	288.99
2:15	331.10	232.90	323.81	257.41	14:15	331.10	277.90	312.31	287.21
2:30	331.10	245.10	324.47	244.26	14:30	331.10	275.90	312.80	273.91
2:45	331.10	244.40	326.24	249.54	14:45	331.10	277.70	313.05	268.95
3:00	331.10	244.10	324.77	237.95	15:00	331.10	277.40	314.08	272.70
3:15	331.10	242.60	321.80	245.55	15:15	331.10	279.20	312.21	271.53
3:30	331.10	246.10	323.02	243.32	15:30	331.10	278.30	332.88	267.74
3:45	331.10	246.70	321.95	252.14	15:45	331.10	278.10	331.09	252.87
4:00	331.10	249.60	324.73	259.17	16:00	331.10	277.20	332.16	271.25
4:15	331.10	248.60	322.99	253.73	16:15	331.10	285.30	330.91	278.74
4:30	331.10	252.50	323.66	258.59	16:30	331.10	286.50	332.24	276.99
4:45	331.10	253.60	318.23	261.89	16:45	331.10	293.00	332.16	285.12
5:00	331.10	256.20	316.68	265.73	17:00	339.00	299.20	330.38	285.52
5:15	331.10	259.20	315.47	264.05	17:15	339.00	305.70	333.27	294.89
5:30	331.10	263.00	315.37	269.11	17:30	339.00	310.30	332.27	298.74
5:45	331.80	263.70	317.33	273.91	17:45	339.00	320.20	346.08	296.94
6:00	339.00	268.30	317.75	276.52	18:00	339.00	331.00	342.39	310.80
6:15	339.00	269.50	317.82	275.90	18:15	339.00	336.60	345.02	322.02
6:30	339.00	270.00	317.65	283.31	18:30	339.00	335.70	344.53	322.84
6:45	339.00	278.70	329.88	285.71	18:45	339.00	334.40	342.98	319.80
7:00	339.00	289.00	329.69	298.64	19:00	339.00	333.90	343.98	327.42
7:15	339.00	298.20	330.37	306.58	19:15	339.00	330.40	341.61	324.77
7:30	339.00	305.40	327.50	312.48	19:30	339.00	330.40	343.96	316.63
7:45	339.00	303.80	329.27	319.96	19:45	339.00	326.80	344.28	318.24
8:00	339.00	300.20	310.49	317.30	20:00	339.00	327.30	339.56	314.84
8:15	339.00	300.80	308.47	316.60	20:15	339.00	326.40	336.51	316.06
8:30	339.00	301.40	310.84	312.88	20:30	339.00	324.20	334.12	308.41
8:45	339.00	296.50	311.22	314.31	20:45	339.00	323.20	335.63	308.09
9:00	339.00	243.30	310.99	315.02	21:00	331.10	321.60	335.07	306.86
9:15	331.10	335.80	300.82	315.57	21:15	331.10	333.10	334.87	305.52
9:30	331.10	310.10	303.25	312.98	21:30	331.10	331.90	334.40	305.27
9:45	331.10	298.00	303.89	309.97	21:45	331.10	325.70	334.64	298.05
10:00	331.10	294.50	303.34	309.23	22:00	331.10	325.60	335.00	282.07
10:15	331.10	293.10	308.64	291.90	22:15	331.10	319.90	319.88	279.46
10:30	331.10	294.70	308.75	288.26	22:30	331.10	303.60	319.88	280.80
10:45	331.10	290.90	309.09	279.40	22:45	331.10	293.50	319.20	267.64
11:00	331.10	289.30	314.80	282.52	23:00	331.10	266.30	319.93	254.27
11:15	331.10	289.30	313.43	296.40	23:15	331.10	244.60	319.28	256.89
11:30	331.10	295.40	314.13	298.23	23:30	331.10	229.40	319.58	269.87
11:45	331.10	292.10	315.79	296.19	23:45	331.10	222.70	319.60	271.16

Yours faithfully
Tshering Deki

Coincidental peak load of Day(Last year):	
262.07	19-Jan-17
Maximum Load till date:	
362.09	14-Nov-17



འབྲུག་གློག་ལེ་ལས་འཛིན།

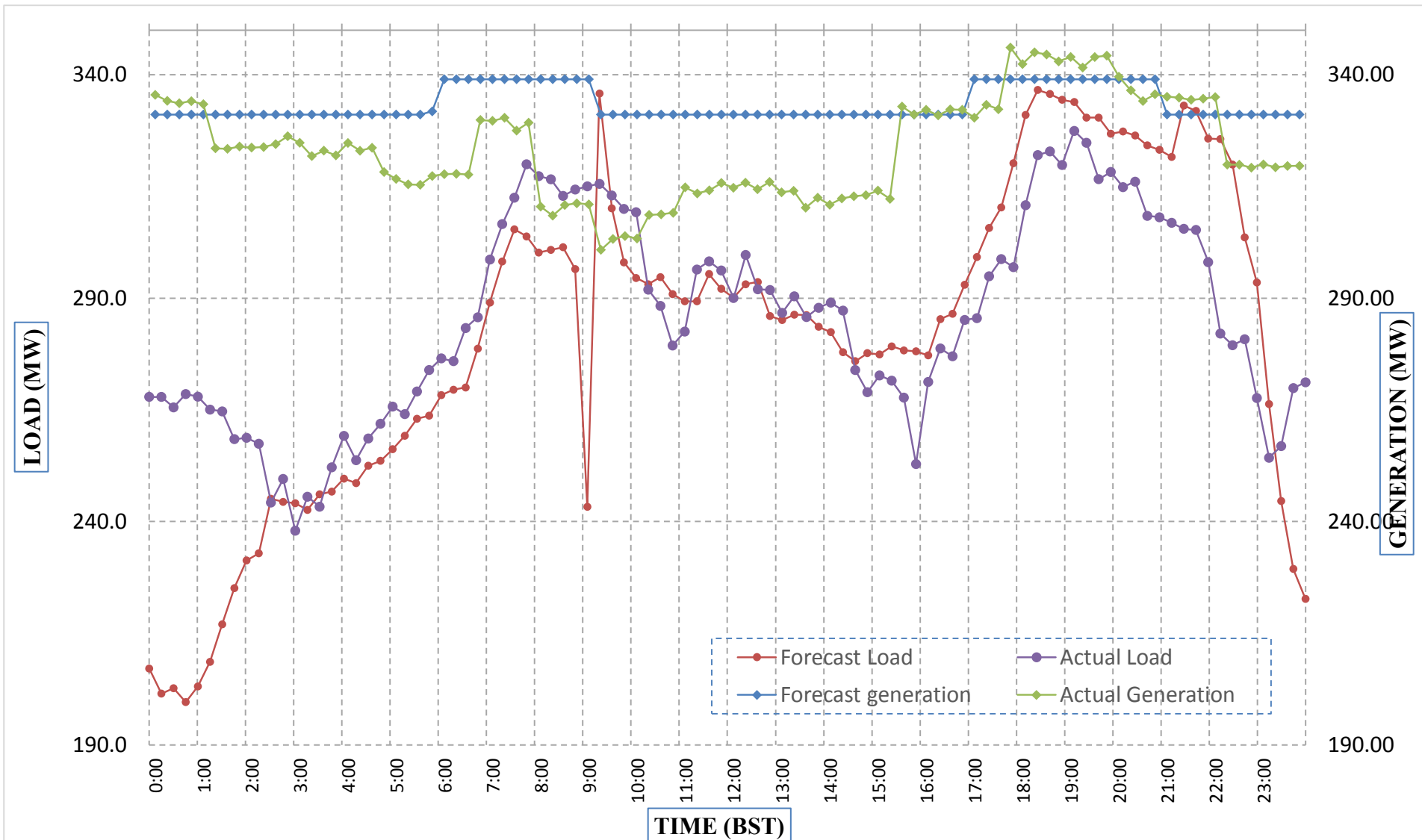
Bhutan Power Corporation Ltd.
 Bhutan Power System Operator
 Thimphu: Bhutan



Message No.: Enter your message number
 From: Shift In-charge, Control Room

Date: 20-Jan-18
 Time: 12:22

Forecast Generation & Load with Actual Generation & Load (19-Jan-2018).



Yours faithfully,
 Tshering Deki

	MW	Coincidental peak load of Day(Last year):	
Peak Co-incident Generation(19-Jan-2018).	346.08	262.07	19-Jan-17
Peak Co-incident Load(19-Jan-2018).	327.42		
		Maximum Load till date:	
		362.09	14-Nov-17

Telephone: +975-02335631; Fax: +975-02335632; Email: bhutansystemoperator@bpc.bt; www.bpc.bt



འབྲུག་གླིང་མེ་ལས་འཛིན།

Bhutan Power Corporation Ltd.
Bhutan Power System Operator
Thimphu: Bhutan



Message No.: Enter your message number
From: Shift In-charge, Control Room

Date: 20-Jan-18
Time: 12:22

To
Managing Director, BPC. Email: gemtshering@bpc.bt
Director, O&MD, DGPC. Email: director.omb@drukgreen.com
General Manager, TD, BPC. Email: thinleygyeltshen@bpc.bt
General Manager, DCSD, BPC. Email: sandeeprai@bpc.bt

Sub: Load Generation Balance Report of Today (20-Jan-2018).

Hours (BST)	Forecast		Actual	
	Generation	Load	Generation	Load
0:00	243.60	219.60	319.60	265.54
0:15	235.20	211.20	318.82	264.19
0:30	233.50	209.50	318.61	262.58
0:45	227.30	203.30	322.00	259.57
1:00	223.70	199.70	319.98	256.25
1:15	222.20	198.20	319.38	253.30
1:30	222.40	198.40	319.18	247.95
1:45	227.00	203.00	319.48	244.65
2:00	230.00	206.00	320.42	240.15
2:15	227.30	203.30	319.13	245.90
2:30	230.70	206.70	319.80	251.16
2:45	229.80	205.80	319.57	250.61
3:00	230.00	206.00	320.74	250.24
3:15	229.70	205.70	321.50	248.05
3:30	240.30	216.30	321.17	241.81
3:45	244.00	220.00	323.84	244.56
4:00	250.20	226.20	320.73	246.90
4:15	258.40	234.40	320.83	247.75
4:30	269.40	245.40	320.65	245.66
4:45	269.80	245.80	319.34	249.94
5:00	273.20	249.20	320.57	253.46
5:15	277.40	253.40	309.51	252.84
5:30	278.10	254.10	310.55	254.82
5:45	283.10	259.10	308.84	257.41
6:00	289.10	265.10	308.82	260.12
6:15	289.80	265.80	309.87	257.81
6:30	294.00	270.00	323.21	266.93
6:45	299.00	275.00	323.44	275.27
7:00	309.30	285.30	324.22	285.55
7:15	317.70	293.70	323.48	289.58
7:30	325.70	301.70	322.52	297.90
7:45	325.70	301.70	324.20	300.77
8:00	313.90	289.90	322.42	301.66
8:15	303.00	279.00	324.62	299.36
8:30	269.00	245.00	323.38	298.21
8:45	259.00	235.00	324.82	303.38
9:00	280.10	256.10	325.11	300.63

Coincidental peak load of Day(Last year):	
283.96	20-Jan-18
264.71	
362.09	14-Nov-17

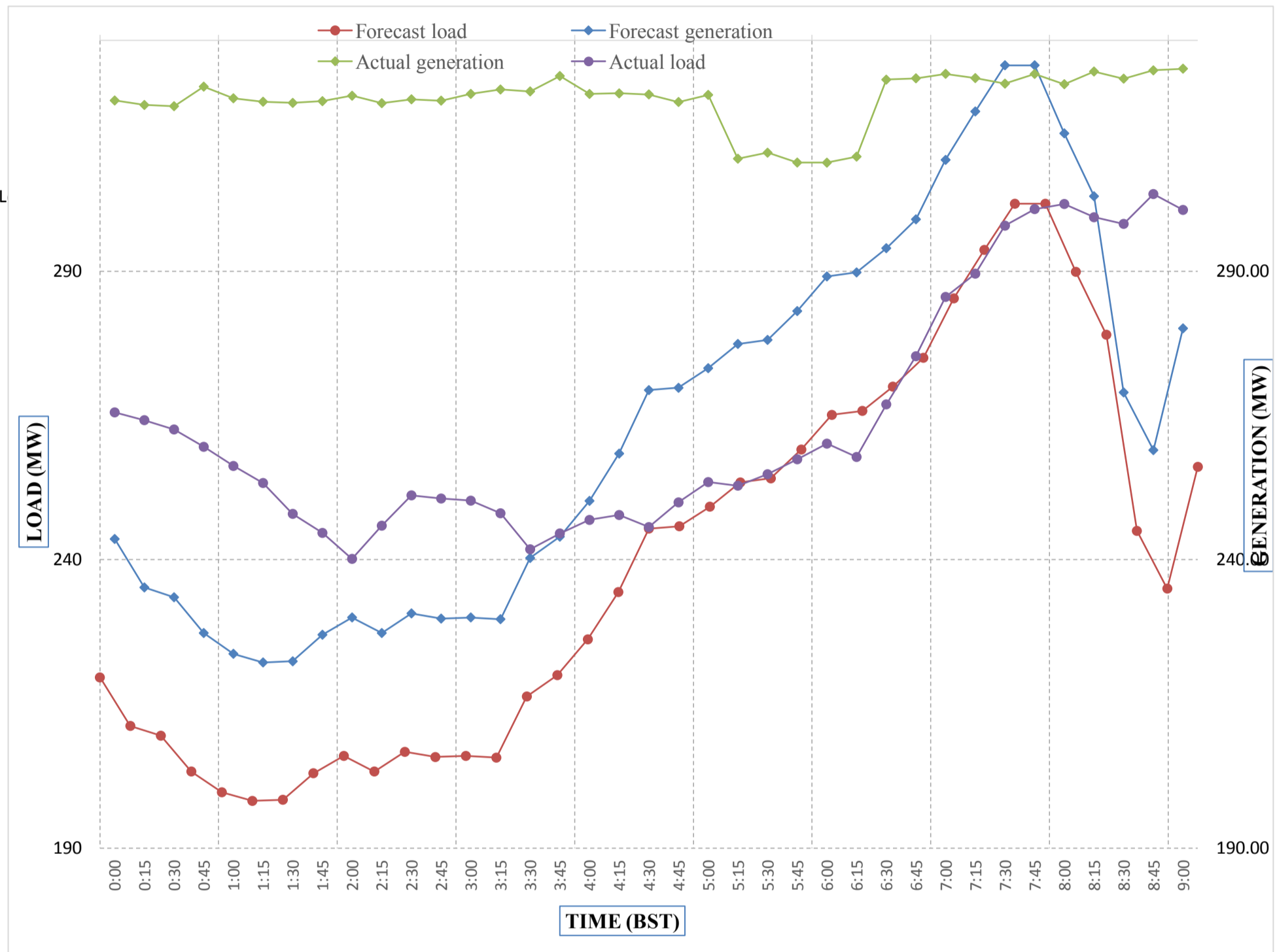
Yours faithfully,
Tshering Deki



Message No.: Enter your message number
 From: Shift In-charge, Control Room

1/19/2018 11:28 20-Jan-18
 1/19/2018 11:28 12:22

Forecast Generation & Load with Actual Generation & Load of Today from 00:00hrs to 09:00hrs(20-Jan-2018).



Yours faithfully
 Tshering Deki



འབྲུག་གྲོག་ལོ་ལས་འཛིན།
Bhutan Power Corporation Ltd.
Bhutan Power System Operator
 Thimphu: Bhutan



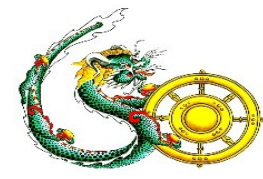
Message No.: Enter your message number **Date:** 20-Jan-18
From: Shift In-charge, Control Room **Time:** 12:22

To
 Managing Director, BPC. Email: gemtshering@bpc.bt
 Director, O&MD, DGPC. Email: director.umd@drukgreen.com
 General Manager, TD, BPC. Email: ktobgye@bpc.bt
 Advisor, BPC. Email: bharattamang@bpc.bt

Sub: Load Generation Balance Report of Tomorrow (21-Jan-2018).

Hours (BST)	Forecast		Hours (BST)	Forecast	
	Generation	Load		Generation	Load
0:00	309.60	230.80	12:00	309.60	291.60
0:15	309.60	221.70	12:15	309.60	293.40
0:30	309.60	219.20	12:30	309.60	292.60
0:45	309.60	217.10	12:45	309.60	286.20
1:00	309.60	216.10	13:00	309.60	283.50
1:15	309.60	213.90	13:15	309.60	285.20
1:30	309.60	213.90	13:30	309.60	285.80
1:45	309.60	215.40	13:45	309.60	285.30
2:00	309.60	218.40	14:00	309.60	282.70
2:15	309.60	215.50	14:15	309.60	277.40
2:30	309.60	215.50	14:30	309.60	274.10
2:45	309.60	214.00	14:45	309.60	275.90
3:00	309.60	212.40	15:00	309.60	274.20
3:15	309.60	211.80	15:15	309.60	275.50
3:30	309.60	218.10	15:30	309.60	276.00
3:45	309.60	222.80	15:45	309.60	272.90
4:00	309.60	222.30	16:00	309.60	273.40
4:15	309.60	223.20	16:15	309.60	277.90
4:30	309.60	236.10	16:30	309.60	283.60
4:45	309.60	228.70	16:45	309.60	288.00
5:00	309.60	231.80	17:00	323.60	294.80
5:15	309.60	240.20	17:15	323.60	301.50
5:30	309.60	233.30	17:30	323.60	308.60
6:45	309.60	243.00	17:45	323.60	317.00
6:00	323.60	259.00	18:00	323.60	327.20
6:15	323.60	260.20	18:15	323.60	331.80
6:30	323.60	264.00	18:30	323.60	333.60
6:45	323.60	274.70	18:45	323.60	331.70
7:00	323.60	292.70	19:00	323.60	330.70
7:15	323.60	295.20	19:15	323.60	328.10
7:30	323.60	301.90	19:30	323.60	327.20
7:45	323.60	288.60	19:45	323.60	322.80
8:00	323.60	252.40	20:00	323.60	322.70
8:15	323.60	234.80	20:15	323.60	321.20
8:30	323.60	234.80	20:30	323.60	318.50
8:45	323.60	267.30	20:45	323.60	315.60
9:00	323.60	298.90	21:00	323.60	311.20
9:15	309.60	324.00	21:15	309.60	317.30
9:30	309.60	310.10	21:30	309.60	314.60
9:45	309.60	300.70	21:45	309.60	309.90
10:00	309.60	297.00	22:00	309.60	305.20
10:15	309.60	291.00	22:15	309.60	300.70
10:30	309.60	290.60	22:30	309.60	289.30
10:45	309.60	288.60	22:45	309.60	279.30
11:00	309.60	288.30	23:00	309.60	263.60
11:15	309.60	291.70	23:15	309.60	250.00
11:30	309.60	296.30	23:30	309.60	247.10
11:45	309.60	294.10	23:45	309.60	242.40

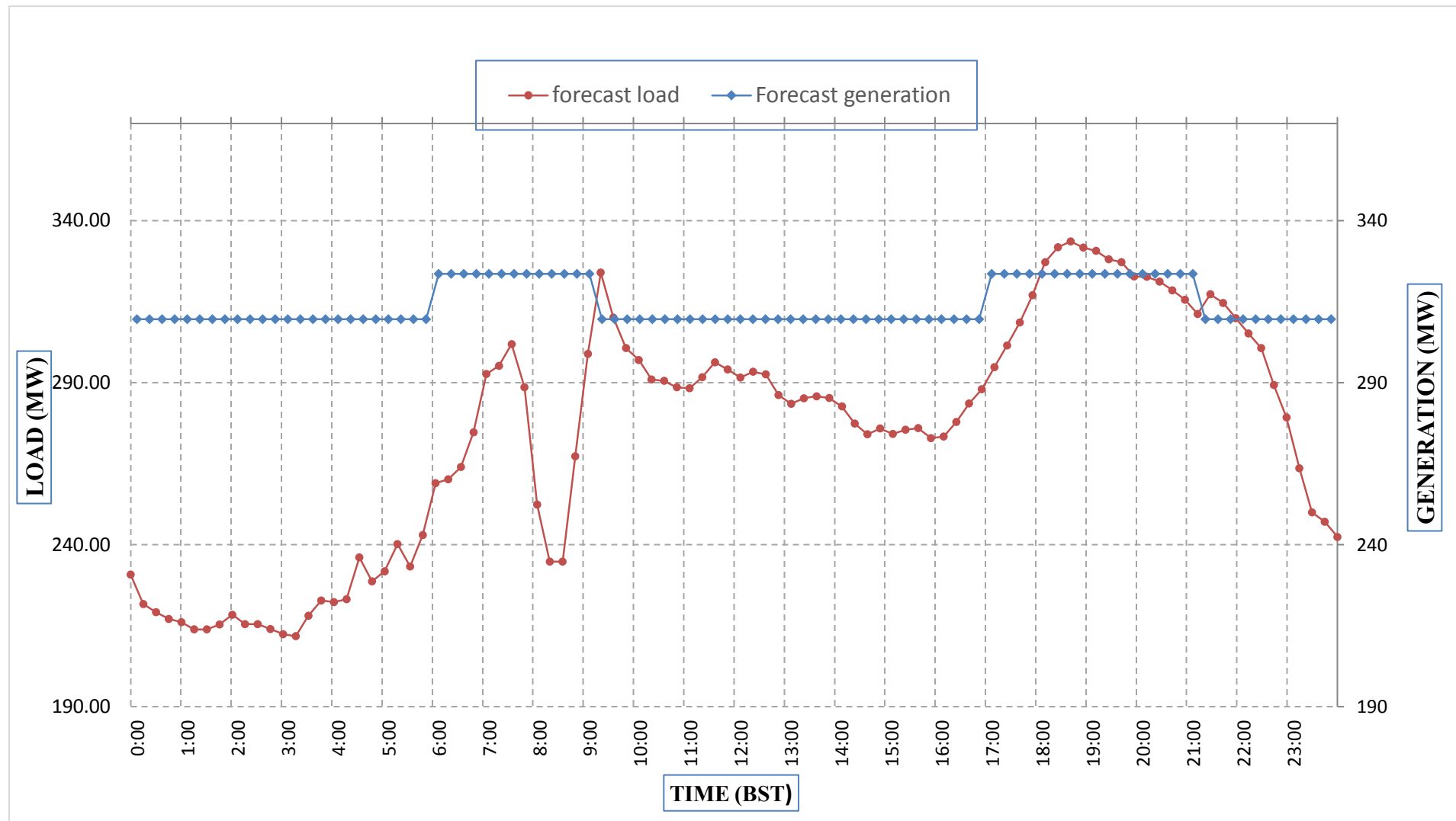
Yours faithfully,
 Tshering Deki



Message No.: Enter your message number
 From: Shift In-charge, Control Room

Date: 19-Jan-18
 Time: 11:28

Forecast Generation & Load Forecast for Tomorrow (20-Jan-2018).



Yours faithfully,
 Tshering Deki

	MW
Scheduled Peak Generation(20-Jan-2018).	323.60
Forecast Peak Load(20-Jan-2018).	333.60



Bhutan Power Corporation Ltd.
 Bhutan Power System Operator
 Thimphu: Bhutan

འབྲུག་གྲོགས་ཚོལ་ལས་ཁུངས་།



Message No.: Enter your message number
From: Shift In-charge, Control Room

Date: 20-Jan-18
Time: 12:22

To
 Managing Director, BPC. Email: gemtshering@bpc.bt
 Director, O&MD, DGPC. Email: director.omb@drukgreen.com
 General Manager, TD, BPC. Email: ktobgye@bpc.bt
 Advisor, BPC. Email: bharattamang@bpc.bt

Sub: Forecast Generation and Actual Generation of Dagachhu (19-Jan-2018).

Hours (BST)	Actual Frequency	Forecast Generation	Actual Generation	Hours (BST)	Actual Frequency	Forecast Generation	Actual Generation
0:00	50.03	21.80	21.51	12:00	50.04	21.80	21.50
0:15	50.03	21.80	21.53	12:15	50.01	21.80	21.50
0:30	50.05	21.80	21.50	12:30	50.00	21.80	21.51
0:45	50.02	21.80	21.52	12:45	50.00	21.80	21.70
1:00	49.99	21.80	21.50	13:00	50.03	21.80	21.70
1:15	50.02	21.80	21.51	13:15	50.09	21.80	21.69
1:30	49.98	21.80	21.49	13:30	50.04	21.80	21.69
1:45	50.00	21.80	21.51	13:45	49.99	21.80	21.70
2:00	50.02	21.80	21.51	14:00	50.02	21.80	21.69
2:15	50.00	21.80	21.49	14:15	50.06	21.80	21.70
2:30	49.98	21.80	21.50	14:30	50.01	21.80	21.69
2:45	50.01	21.80	21.51	14:45	50.00	21.80	21.67
3:00	50.01	21.80	21.50	15:00	49.97	21.80	21.70
3:15	49.97	21.80	21.49	15:15	50.04	21.80	21.71
3:30	49.97	21.80	21.52	15:30	49.96	21.80	21.28
3:45	49.98	21.80	21.51	15:45	49.90	21.80	21.28
4:00	49.97	21.80	21.52	16:00	49.90	21.80	21.30
4:15	50.02	21.80	21.51	16:15	49.95	21.80	21.34
4:30	50.00	21.80	21.49	16:30	49.90	21.80	21.29
4:45	49.99	21.80	21.50	16:45	49.99	21.80	21.30
5:00	49.98	21.80	21.51	17:00	49.99	21.80	21.30
5:15	49.94	21.80	21.50	17:15	50.01	21.80	21.30
5:30	49.92	21.80	21.49	17:30	49.99	21.80	21.30
6:45	50.03	21.80	21.51	17:45	50.00	21.80	21.30
6:00	49.97	21.80	21.50	18:00	50.05	21.80	21.29
6:15	49.97	21.80	21.51	18:15	49.99	21.80	21.31
6:30	49.87	21.80	21.50	18:30	49.92	21.80	21.30
6:45	49.89	21.80	21.50	18:45	49.90	21.80	21.32
7:00	49.93	21.80	21.50	19:00	49.99	21.80	21.30
7:15	49.88	21.80	21.50	19:15	49.99	21.80	21.29
7:30	49.97	21.80	21.49	19:30	49.98	21.80	21.30
7:45	49.98	21.80	21.49	19:45	49.98	21.80	21.32
8:00	49.98	21.80	21.49	20:00	50.00	21.80	21.29
8:15	49.98	21.80	21.53	20:15	50.01	21.80	21.31
8:30	49.99	21.80	21.48	20:30	49.97	21.80	21.29
8:45	50.01	21.80	21.49	20:45	49.99	21.80	21.50
9:00	49.98	21.80	21.50	21:00	49.99	21.80	21.50
9:15	50.00	21.80	21.46	21:15	49.97	21.80	21.49
9:30	49.99	21.80	21.49	21:30	49.98	21.80	21.48
9:45	49.99	21.80	21.48	21:45	50.01	21.80	21.48
10:00	49.94	21.80	21.49	22:00	50.07	21.80	21.50
10:15	49.98	21.80	21.50	22:15	49.95	21.80	21.48
10:30	49.95	21.80	21.50	22:30	49.95	21.80	21.50
10:45	49.99	21.80	21.49	22:45	49.99	21.80	21.48
11:00	49.90	21.80	21.50	23:00	49.99	21.80	21.51
11:15	49.92	21.80	21.50	23:15	49.98	21.80	21.01
11:30	49.96	21.80	21.49	23:30	49.99	21.80	21.02
11:45	49.92	21.80	21.49	23:45	49.99	21.80	21.00

Yours faithfully,
 Tshering Deki

#



འབྲུག་གྲོག་མེ་ལས་འཛིན།

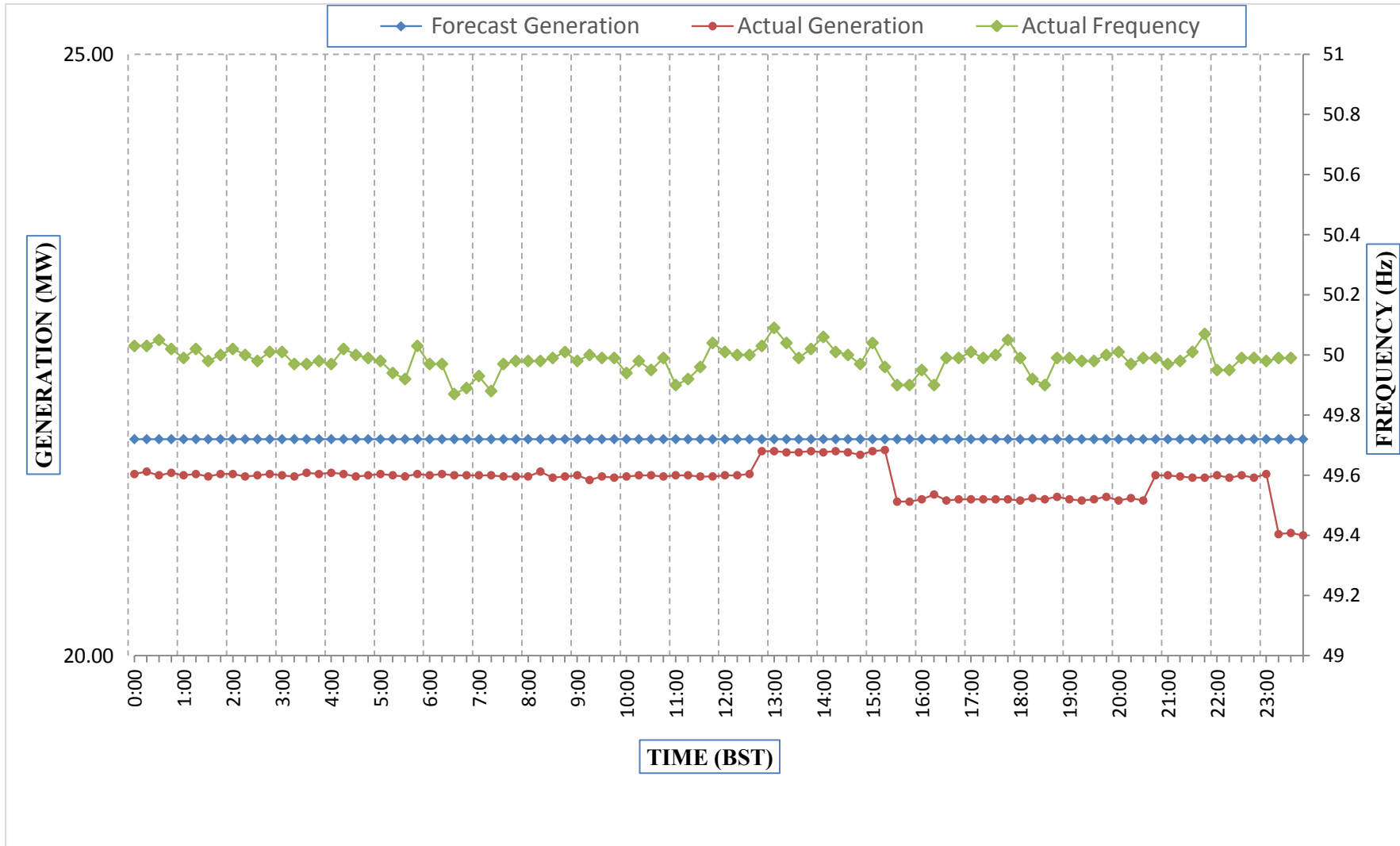
Bhutan Power Corporation Ltd.
Bhutan Power System Operator
Thimphu: Bhutan



Message No.: Enter your message number
From: Shift In-charge, Control Room

Date: 19-Jan-18
Time: 11:28

Forecast Generation & Actual Generation of Dagachhu(18-Jan-2018).



Yours faithfully,
Tshering Deki