



འབྲུག་རྒྱུ་ལེ་ལས་འཛིན།

Bhutan Power Corporation Ltd.  
Bhutan Power System Operator  
Thimphu: Bhutan



Message No.: Enter your message number  
From: Shift In-charge, Control Room

Date: 19-Jan-18  
Time: 11:28

To  
Managing Director, BPC. Email: gemtshering@bpc.bt  
Director, O&MD, DGPC. Email: director.omb@drukgreen.com  
General Manager, TD, BPC. Email: ktobgye@bpc.bt  
General Manager, DCSD, BPC. Email: sandeeprai@bpc.bt

Sub: **Load Generation Balance Report of Yesterday (18-Jan-2018).**

Hours (BST)	Forecast		Actual		Hours (BST)	Forecast		Actual	
	Generation	Load	Generation	Load		Generation	Load	Generation	Load
0:00	295.9	250.1	333.4	255.7	12:00	309.5	297.7	323.99	297.88
0:15	295.9	233.3	331.8	252.6	12:15	309.5	299.3	323.73	289.56
0:30	295.9	225.2	332.6	255.8	12:30	309.5	298.7	325.39	294.81
0:45	295.9	212.3	333.6	249.0	12:45	309.5	294.5	323.66	291.01
1:00	309.2	209.7	333.1	245.1	13:00	309.5	291.8	325.88	287.12
1:15	309.5	205.1	333.7	240.8	13:15	309.5	292.3	324.11	279.70
1:30	309.5	202	331.6	247.9	13:30	309.5	292.9	320.21	285.01
1:45	309.5	203.9	330.7	249.6	13:45	309.5	289.6	321.25	282.28
2:00	309.5	204.2	331.2	251.0	14:00	309.5	288.8	320.65	278.12
2:15	309.5	204.3	330.7	247.6	14:15	309.5	283.7	341.77	282.74
2:30	309.5	208.7	328.7	246.3	14:30	309.5	283.6	340.59	280.47
2:45	309.5	214	328.3	248.1	14:45	309.5	287	340.88	274.50
3:00	309.5	211.4	330.0	243.6	15:00	309.5	285	341.13	275.55
3:15	309.5	214.7	337.3	250.7	15:15	309.5	284.8	341.91	280.00
3:30	309.5	228.7	332.6	255.4	15:30	309.5	285.6	341.19	283.98
3:45	309.5	244.2	331.9	257.3	15:45	309.5	284.9	342.40	273.41
4:00	309.5	243.9	330.7	253.4	16:00	309.5	288.2	341.14	272.88
4:15	309.5	244.1	331.7	252.5	16:15	309.5	292.5	337.95	272.30
4:30	309.5	251.4	331.4	251.4	16:30	309.5	292.4	336.92	285.22
4:45	309.5	255.2	330.6	253.3	16:45	309.5	297.3	325.38	290.40
5:00	309.5	256.6	329.9	256.7	17:00	309.5	304	331.28	294.98
5:15	309.5	262.2	311.4	252.7	17:15	324.2	310	345.53	301.55
5:30	309.5	264.5	310.1	254.7	17:30	324.2	315.1	352.53	299.75
5:45	309.5	266.4	304.2	251.9	17:45	324.2	324.1	336.29	318.97
6:00	309.5	270.4	312.4	251.3	18:00	324.2	334.5	350.31	330.93
6:15	324.2	275.8	310.3	253.0	18:15	324.2	340	351.07	336.45
6:30	324.2	279	317.7	258.6	18:30	324.2	341.4	350.87	342.39
6:45	324.2	284.2	323.1	263.6	18:45	324.2	339.5	348.48	335.16
7:00	324.2	294.3	324.5	271.0	19:00	324.2	338.3	351.00	334.69
7:15	324.2	304.4	324.3	278.2	19:15	324.2	340.8	334.79	333.06
7:30	324.2	313.7	323.4	287.5	19:30	324.2	339.4	350.13	326.48
7:45	324.2	309.5	323.5	291.2	19:45	324.2	332.4	349.66	328.25
8:00	324.2	307.3	324.4	291.0	20:00	324.2	332.1	347.95	326.45
8:15	324.2	305.3	323.6	293.2	20:15	324.2	328.4	347.81	315.86
8:30	324.2	296.1	321.8	300.3	20:30	324.2	327.8	349.49	315.39
8:45	324.2	264.9	323.6	302.1	20:45	324.2	327.4	352.83	312.39
9:00	324.2	244.1	322.3	303.5	21:00	324.2	328	354.84	310.05
9:15	309.5	330.6	308.26	305.16	21:15	309.5	344.1	337.13	302.76
9:30	309.5	317.6	311.01	305.09	21:30	309.5	342.7	337.73	298.09
9:45	309.5	306.2	306.79	302.13	21:45	309.5	335.5	339.21	296.52
10:00	309.5	303.4	308.57	302.01	22:00	309.5	330	338.45	296.57
10:15	309.5	302.5	308.83	287.62	22:15	309.5	327	338.98	281.50
10:30	309.5	298.9	310.32	285.16	22:30	309.5	310.4	339.12	277.63
10:45	309.5	297.2	309.60	294.90	22:45	309.5	295.8	336.84	275.55
11:00	309.5	296.8	308.84	293.24	23:00	309.5	273.7	335.77	267.27
11:15	309.5	294.2	314.10	291.38	23:15	309.5	249.4	336.46	268.23
11:30	309.5	301.5	321.36	294.34	23:30	309.5	232.7	332.81	264.73
11:45	309.5	299.8	323.86	294.19	23:45	309.5	215.1	336.50	270.36

Yours faithfully  
Phub Zam

Coincidental peak load of Day(Last year):	
264.71	18-Jan-17
Maximum Load till date:	
362.09	14-Nov-17



འབྲུག་གློག་ལེ་ལས་འཛིན།

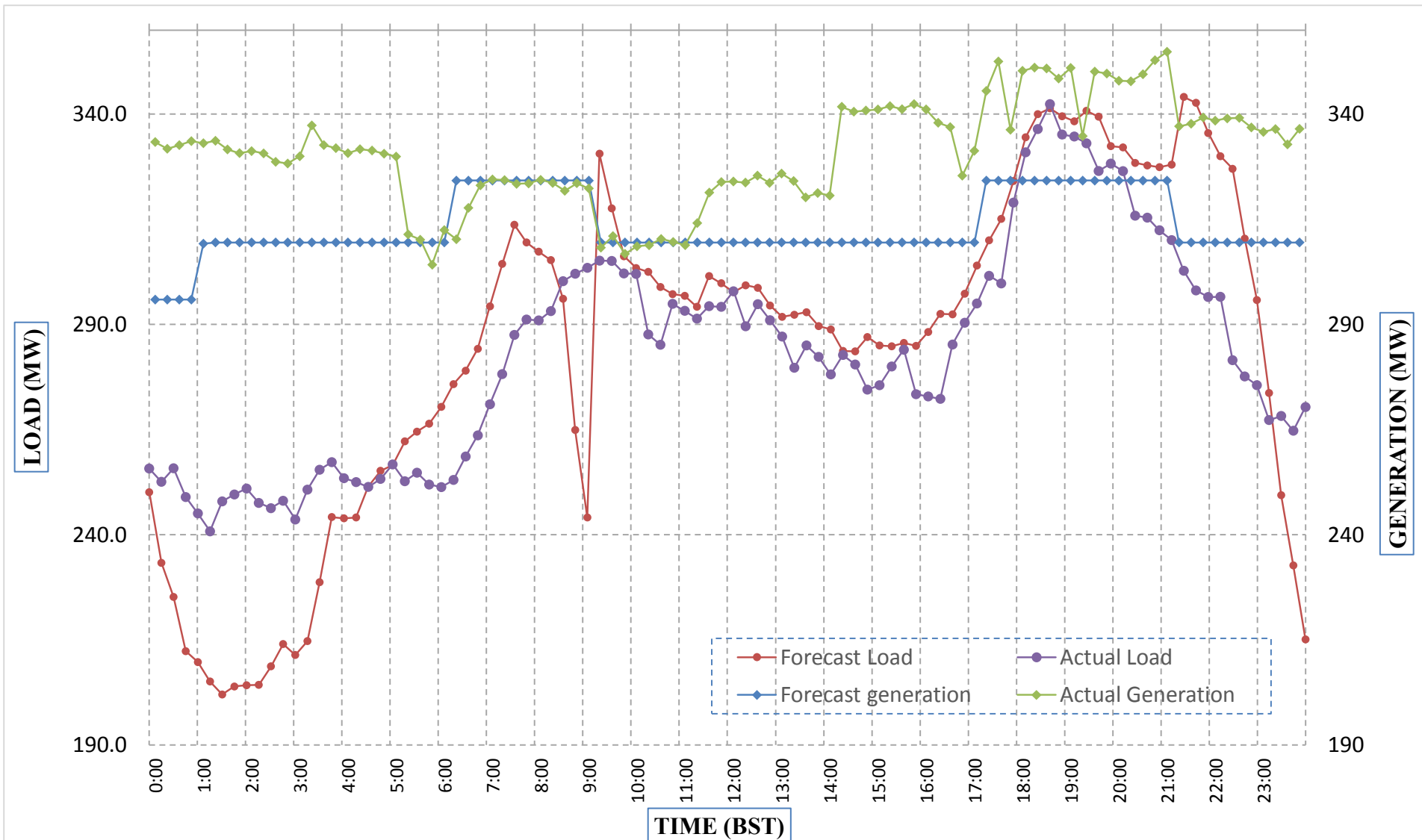
Bhutan Power Corporation Ltd.  
 Bhutan Power System Operator  
 Thimphu: Bhutan



Message No.: Enter your message number  
 From: Shift In-charge, Control Room

Date: 19-Jan-18  
 Time: 11:28

Forecast Generation & Load with Actual Generation & Load (18-Jan-2018).



Yours faithfully,  
 Phub Zam

	MW	Coincidental peak load of Day(Last year):	
Peak Co-incident Generation(18-Jan-2018).	354.84	264.71	18-Jan-17
Peak Co-incident Load(18-Jan-2018).	342.39		
		Maximum Load till date:	
		362.09	14-Nov-17

Telephone: +975-02335631; Fax: +975-02335632; Email: bhutansystemoperator@bpc.bt; www.bpc.bt



འབྲུག་གློག་ལེ་ལས་འཛིན།

Bhutan Power Corporation Ltd.  
Bhutan Power System Operator  
Thimphu: Bhutan



Message No.: Enter your message number  
From: Shift In-charge, Control Room

Date: 19-Jan-18  
Time: 11:28

To  
Managing Director, BPC. Email: gemtshering@bpc.bt  
Director, O&MD, DGPC. Email: director.umd@drukgreen.com  
General Manager, TD, BPC. Email: thinleygyeltshen@bpc.bt  
General Manager, DCSD, BPC. Email: sandeeprai@bpc.bt

Sub: Load Generation Balance Report of Today (19-Jan-2018).

Hours (BST)	Forecast		Actual	
	Generation	Load	Generation	Load
0:00	331.1	207.1	335.5	267.9
0:15	331.1	201.5	334.2	267.9
0:30	331.1	202.7	333.6	265.6
0:45	331.1	199.6	334.1	268.5
1:00	331.1	203.1	333.4	268.0
1:15	331.1	208.6	323.5	265.0
1:30	331.1	217	323.4	264.6
1:45	331.1	225.1	323.9	258.5
2:00	331.1	231.3	323.7	258.8
2:15	331.1	232.9	323.8	257.4
2:30	331.1	245.1	324.5	244.3
2:45	331.1	244.4	326.2	249.5
3:00	331.1	244.1	324.8	237.9
3:15	331.1	242.6	321.8	245.5
3:30	331.1	246.1	323.0	243.3
3:45	331.1	246.7	322.0	252.1
4:00	331.1	249.6	324.7	259.2
4:15	331.1	248.6	323.0	253.7
4:30	331.1	252.5	323.7	258.6
4:45	331.1	253.6	318.2	261.9
5:00	331.1	256.2	316.7	265.7
5:15	331.1	259.2	315.5	264.1
5:30	331.1	263	315.4	269.1
5:45	331.8	263.7	317.3	273.9
6:00	339	268.3	317.8	276.5
6:15	339	269.5	317.8	275.9
6:30	339	270	317.6	283.3
6:45	339	278.7	329.9	285.7
7:00	339	289	329.7	298.6
7:15	339	298.2	330.4	306.6
7:30	339	305.4	327.5	312.5
7:45	339	303.8	329.3	320.0
8:00	339	300.2	310.5	317.3
8:15	339	300.8	308.5	316.6
8:30	339	301.4	310.8	312.9
8:45	339	296.5	311.2	314.3
9:00	339	243.3	311.0	315.0

Coincidental peak load of Day(Last year):	
262.07	19-Jan-18
264.71	
362.09	14-Nov-17

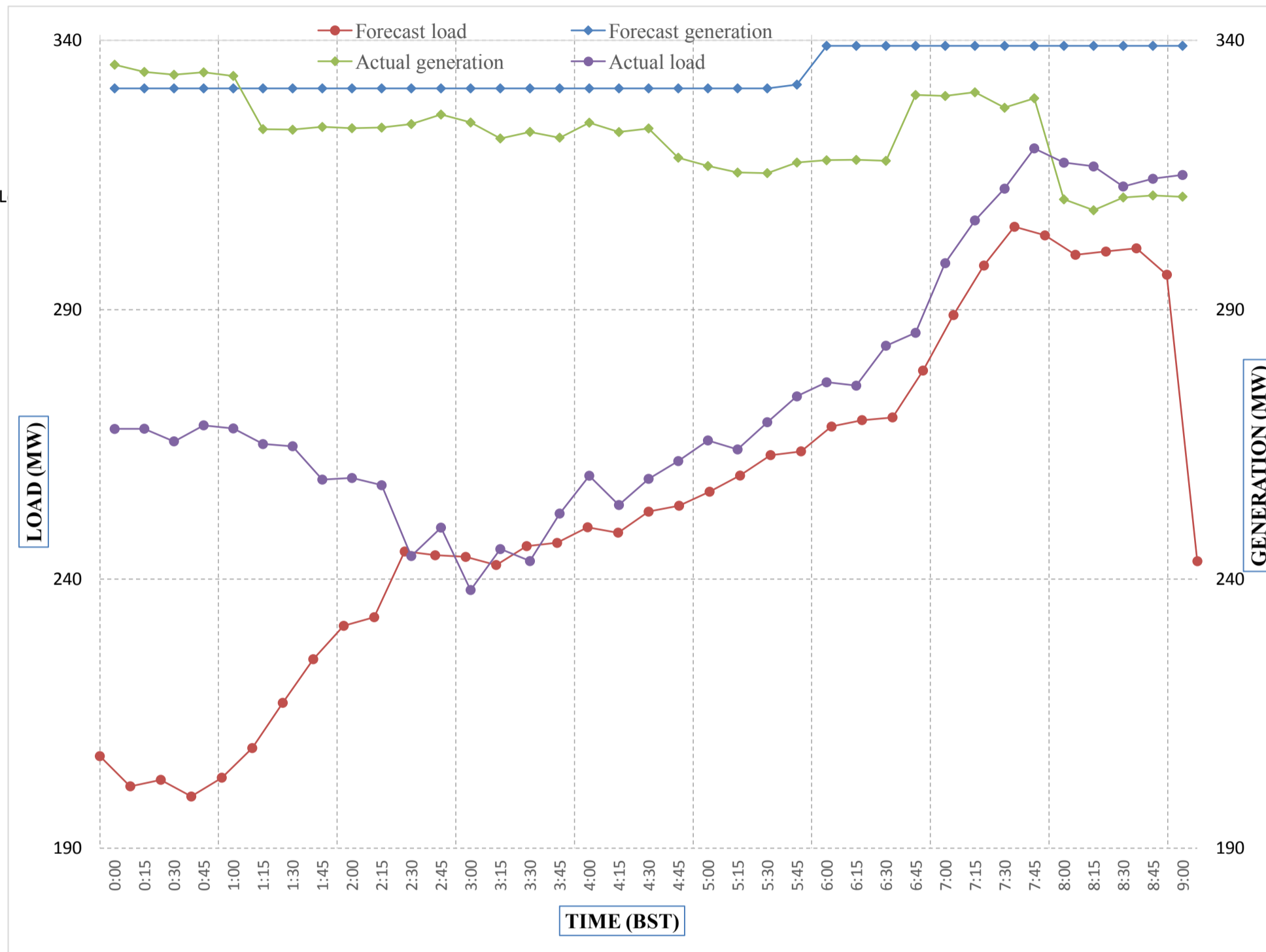
Yours faithfully,  
Phub Zam



Message No.: Enter your message number  
 From: Shift In-charge, Control Room

1/19/2018 11:28 19-Jan-18  
 1/19/2018 11:28 11:28

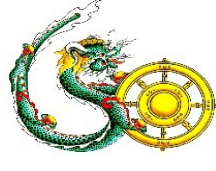
Forecast Generation & Load with Actual Generation & Load of Today from 00:00hrs to 09:00hrs(19-Jan-2018).



Yours faithfully  
 Phub Zam



འབྲུག་གྲོག་ཚོའི་ལས་འཛིན།  
**Bhutan Power Corporation Ltd.**  
**Bhutan Power System Operator**  
 Thimphu: Bhutan



**Message No.:** Enter your message number **Date:** 19-Jan-18  
**From:** Shift In-charge, Control Room **Time:** 11:28

**To**  
 Managing Director, BPC. Email: gemtshering@bpc.bt  
 Director, O&MD, DGPC. Email: director.umd@drukgreen.com  
 General Manager, TD, BPC. Email: ktobgye@bpc.bt  
 Advisor, BPC. Email: bharattamang@bpc.bt

**Sub:** Load Generation Balance Report of Tomorrow (20-Jan-2018).

Hours (BST)	Forecast		Hours (BST)	Forecast	
	Generation	Load		Generation	Load
0:00	243.6	219.6	12:00	315.1	291.1
0:15	235.2	211.2	12:15	316.3	292.3
0:30	233.5	209.5	12:30	316.2	292.2
0:45	227.3	203.3	12:45	309.8	285.8
1:00	223.7	199.7	13:00	308	284
1:15	222.2	198.2	13:15	307.7	283.7
1:30	222.4	198.4	13:30	309.3	285.3
1:45	227	203	13:45	306.7	282.7
2:00	230	206	14:00	304.5	280.5
2:15	227.3	203.3	14:15	300.5	276.5
2:30	230.7	206.7	14:30	299.4	275.4
2:45	229.8	205.8	14:45	301.3	277.3
3:00	230	206	15:00	300.8	276.8
3:15	229.7	205.7	15:15	300.7	276.7
3:30	240.3	216.3	15:30	301	277
3:45	244	220	15:45	299.2	275.2
4:00	250.2	226.2	16:00	298.2	274.2
4:15	258.4	234.4	16:15	305.2	281.2
4:30	269.4	245.4	16:30	309.1	285.1
4:45	269.8	245.8	16:45	314.4	290.4
5:00	273.2	249.2	17:00	321.1	297.1
5:15	277.4	253.4	17:15	326.7	302.7
5:30	278.1	254.1	17:30	334.2	310.2
6:45	283.1	259.1	17:45	342.6	320
6:00	289.1	265.1	18:00	355	331
6:15	289.8	265.8	18:15	359.6	335.6
6:30	294	270	18:30	360.5	336.5
6:45	299	275	18:45	358.9	334.9
7:00	309.3	285.3	19:00	356.1	332.1
7:15	317.7	293.7	19:15	354.1	330.1
7:30	325.7	301.7	19:30	353.9	329.9
7:45	325.7	301.7	19:45	348.7	324.7
8:00	313.9	289.9	20:00	349.3	325.3
8:15	303	279	20:15	348.5	324.5
8:30	269	245	20:30	342.6	322.4
8:45	259	235	20:45	342.6	320.3
9:00	280.1	256.1	21:00	339.4	315.4
9:15	353.7	329.7	21:15	342.6	323.5
9:30	333.9	309.9	21:30	342.6	321.4
9:45	322.8	298.8	21:45	340.7	316.7
10:00	318	294	22:00	338.6	314.6
10:15	315.6	291.6	22:15	335.5	311.5
10:30	316.2	292.2	22:30	319.5	295.5
10:45	314.7	290.7	22:45	310	286
11:00	314.5	290.5	23:00	289.9	265.9
11:15	313.8	289.8	23:15	273.6	249.6
11:30	319	295	23:30	262	238
11:45	316.7	292.7	23:45	257.4	233.4

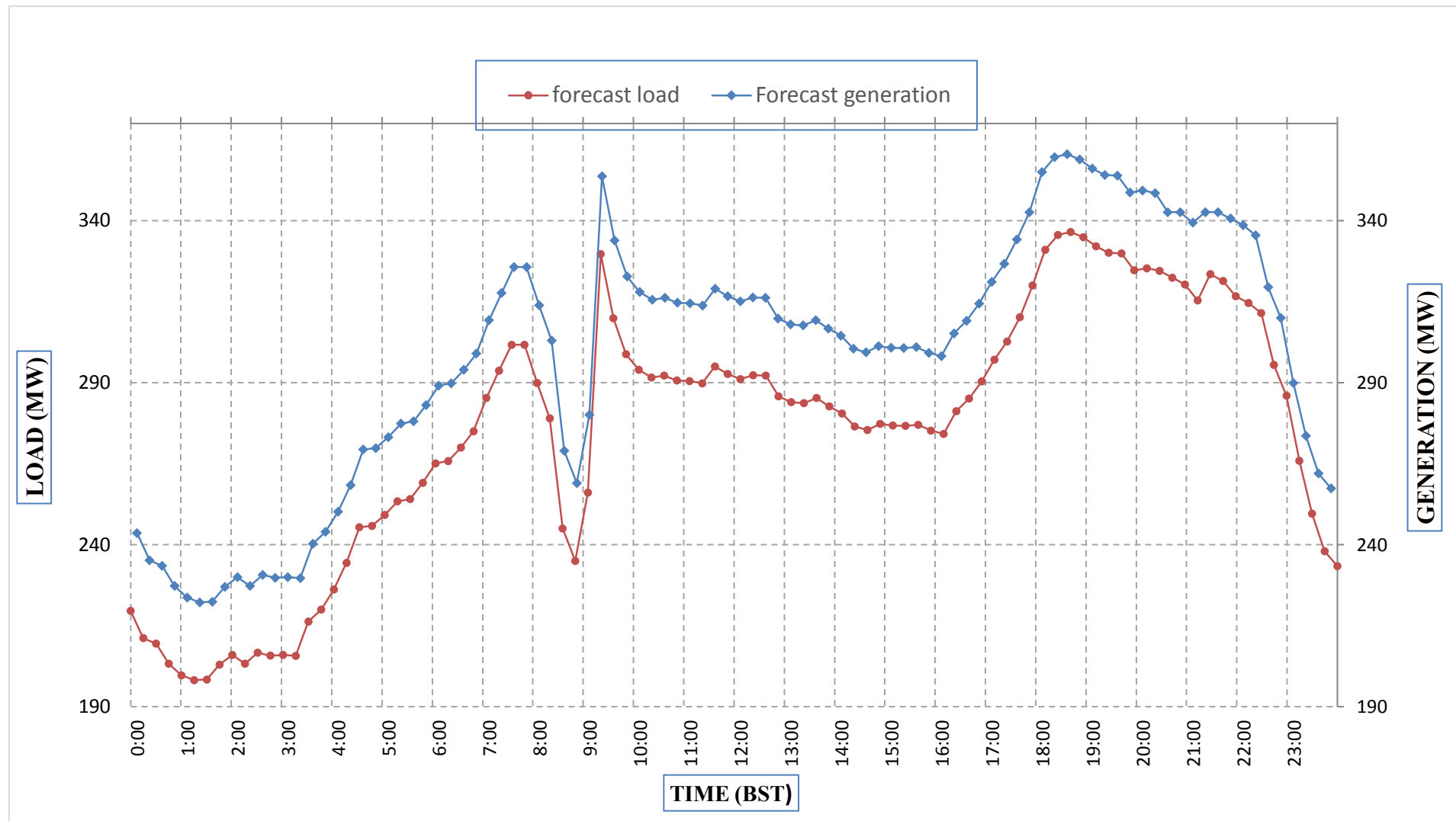
Yours faithfully,  
 Phub Zam



Message No.: Enter your message number  
 From: Shift In-charge, Control Room

Date: 19-Jan-18  
 Time: 11:28

**Forecast Generation & Load Forecast for Tomorrow (20-Jan-2018).**



Yours faithfully,  
 Phub Zam

	MW
Scheduled Peak Generation(20-Jan-2018).	360.50
Forecast Peak Load(20-Jan-2018).	336.50



Bhutan Power Corporation Ltd.  
 Bhutan Power System Operator  
 Thimphu: Bhutan

འབྲུག་གྲོགས་ཚོལ་ལས་ཁུངས་།



**Message No.:** Enter your message number  
**From:** Shift In-charge, Control Room

**Date:** 19-Jan-18  
**Time:** 11:28

#####  
 #####

**To**  
 Managing Director, BPC. Email: gemtshering@bpc.bt  
 Director, O&MD, DGPC. Email: director.omb@drukgreen.com  
 General Manager, TD, BPC. Email: ktobgye@bpc.bt  
 Advisor, BPC. Email: bharrattamang@bpc.bt

**Sub:** Forecast Generation and Actual Generation of Dagachhu (18-Jan-2018).

Hours (BST)	Actual Frequency	Forecast Generation	Actual Generation	Hours (BST)	Actual Frequency	Forecast Generation	Actual Generation
0:00	49.92	21.8	21.33	12:00	49.92	21.8	21.99
0:15	49.92	21.8	21.32	12:15	49.92	21.8	21.98
0:30	49.92	21.8	21.34	12:30	49.92	21.8	22.00
0:45	49.92	21.8	21.31	12:45	49.92	21.8	22.00
1:00	49.92	21.8	21.39	13:00	49.92	21.8	22.00
1:15	49.92	21.8	21.40	13:15	50.17	21.8	21.99
1:30	49.92	21.8	21.40	13:30	50.17	21.8	22.00
1:45	49.92	21.8	21.64	13:45	50.17	21.8	21.99
2:00	49.92	21.8	21.62	14:00	50.17	21.8	21.99
2:15	49.92	21.8	21.62	14:15	50.17	21.8	22.01
2:30	49.92	21.8	21.63	14:30	50.17	21.8	21.99
2:45	49.92	21.8	21.62	14:45	50.17	21.8	21.99
3:00	49.92	21.8	21.63	15:00	50.17	21.8	21.99
3:15	49.92	21.8	21.63	15:15	49.92	21.8	21.99
3:30	49.92	21.8	21.62	15:30	49.92	21.8	21.99
3:45	49.92	21.8	21.63	15:45	49.92	21.8	21.98
4:00	49.92	21.8	21.62	16:00	49.92	21.8	22.00
4:15	49.92	21.8	21.61	16:15	49.92	21.8	21.96
4:30	49.92	21.8	21.64	16:30	49.92	21.8	21.99
4:45	49.92	21.8	21.61	16:45	49.92	21.8	21.98
5:00	49.92	21.8	21.62	17:00	49.92	21.8	21.98
5:15	49.92	21.8	21.64	17:15	49.92	21.8	21.97
5:30	49.92	21.8	21.63	17:30	49.92	21.8	21.97
6:45	49.92	21.8	21.63	17:45	49.92	21.8	21.99
6:00	49.92	21.8	21.63	18:00	49.92	21.8	21.97
6:15	49.92	21.8	21.64	18:15	49.92	21.8	21.99
6:30	49.92	21.8	21.62	18:30	49.92	21.8	21.49
6:45	49.92	21.8	21.62	18:45	49.92	21.8	21.50
7:00	49.92	21.8	21.70	19:00	49.92	21.8	21.48
7:15	49.92	21.8	21.68	19:15	49.92	21.8	21.47
7:30	49.92	21.8	21.69	19:30	49.92	21.8	21.48
7:45	49.92	21.8	21.69	19:45	49.92	21.8	21.48
8:00	49.92	21.8	21.99	20:00	49.92	21.8	21.48
8:15	49.92	21.8	21.98	20:15	49.92	21.8	21.48
8:30	49.92	21.8	21.98	20:30	49.92	21.8	21.19
8:45	49.92	21.8	21.99	20:45	49.92	21.8	21.18
9:00	49.92	21.8	21.98	21:00	49.92	21.8	21.19
9:15	49.92	21.8	22.00	21:15	49.92	21.8	21.19
9:30	49.92	21.8	21.98	21:30	49.92	21.8	21.19
9:45	49.92	21.8	21.99	21:45	49.92	21.8	21.19
10:00	49.92	21.8	22.00	22:00	49.92	21.8	21.18
10:15	49.92	21.8	21.98	22:15	49.92	21.8	21.20
10:30	49.92	21.8	21.99	22:30	49.92	21.8	21.20
10:45	49.92	21.8	21.99	22:45	49.92	21.8	21.20
11:00	49.92	21.8	21.98	23:00	49.92	21.8	21.19
11:15	49.92	21.8	22.00	23:15	50.17	21.8	21.21
11:30	49.92	21.8	22.00	23:30	50.17	21.8	21.51
11:45	49.92	21.8	21.98	23:45	50.17	21.8	21.50

Yours faithfully,  
 Phub Zam

#



འབྲུག་གྲོག་མེ་ལས་འཛིན།

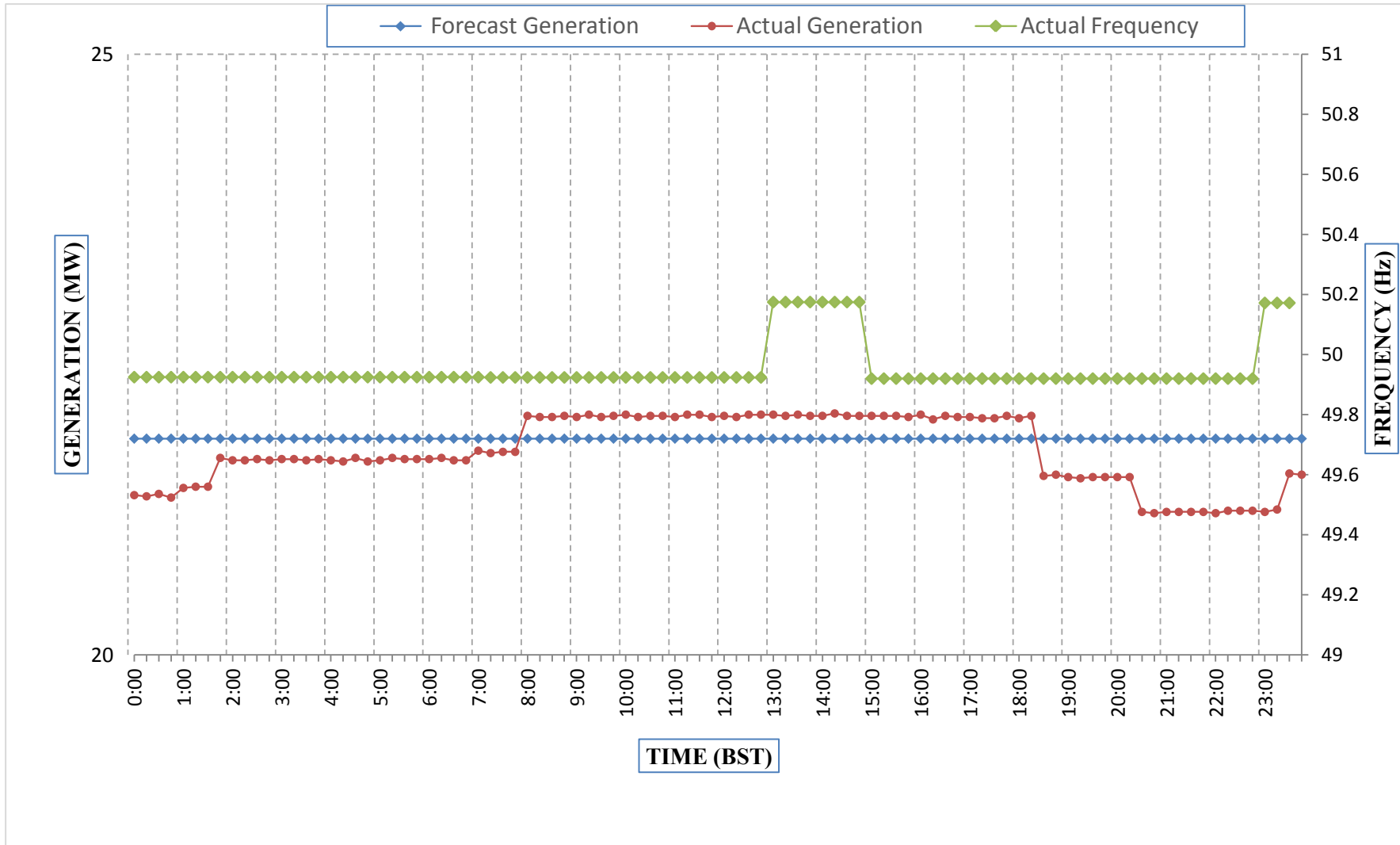
Bhutan Power Corporation Ltd.  
Bhutan Power System Operator  
Thimphu: Bhutan



Message No.: Enter your message number  
From: Shift In-charge, Control Room

Date: 19-Jan-18  
Time: 11:28

Forecast Generation & Actual Generation of Dagachhu(18-Jan-2018).



Yours faithfully,  
Phub Zam



