



འབྲུག་གློག་ཐོ་ལས་འཛིན།

Bhutan Power Corporation Ltd.
Bhutan Power System Operator
Thimphu: Bhutan



Message No.: Enter your message number
From: Shift In-charge, Control Room

Date: 18-Jan-18
Time: 11:26

To
Managing Director, BPC. Email: gemtshering@bpc.bt
Director, O&MD, DGPC. Email: director.omid@drukgreen.com
General Manager, TD, BPC. Email: ktobgye@bpc.bt
General Manager, DCSD, BPC. Email: sandeeprai@bpc.bt

Sub: **Load Generation Balance Report of Yesterday (17-Jan-2018).**

Hours (BST)	Forecast		Actual		Hours (BST)	Forecast		Actual	
	Generation	Load	Generation	Load		Generation	Load	Generation	Load
0:00	317.8	264.2	320.7	253.7	12:00	317.8	298.7	309.70	274.05
0:15	317.8	260.6	319.9	251.2	12:15	317.8	298.7	310.40	274.85
0:30	317.8	260.5	320.9	250.7	12:30	317.8	299	309.75	276.48
0:45	317.8	251.2	321.0	249.1	12:45	317.8	293.3	310.28	259.96
1:00	317.8	254.2	321.7	248.9	13:00	317.8	291.4	311.52	265.13
1:15	317.8	249	310.5	242.0	13:15	317.8	290.9	311.57	262.16
1:30	317.8	243.7	311.7	248.2	13:30	317.8	292.1	312.09	263.44
1:45	317.8	233.9	312.1	244.6	13:45	317.8	289.7	312.17	266.05
2:00	317.8	225.8	311.8	259.2	14:00	317.8	288.1	312.41	263.80
2:15	317.8	214.6	311.4	244.3	14:15	317.8	284.2	332.95	261.11
2:30	317.8	204.7	313.9	253.3	14:30	317.8	282.2	331.87	255.46
2:45	317.8	197.5	310.2	253.4	14:45	317.8	284.3	333.05	251.60
3:00	317.8	199.5	311.4	252.6	15:00	317.8	280.8	333.40	256.87
3:15	317.8	198.5	310.6	243.3	15:15	317.8	281.5	330.95	260.99
3:30	317.8	199.9	311.4	239.1	15:30	317.8	281.9	331.38	259.42
3:45	317.8	200.1	312.5	237.6	15:45	317.8	281	332.57	254.36
4:00	317.8	199.8	312.6	243.1	16:00	317.8	287	332.16	256.91
4:15	317.8	201.6	311.2	243.4	16:15	317.8	291.5	333.22	257.09
4:30	317.8	210.4	311.0	246.0	16:30	317.8	295.9	331.55	268.73
4:45	317.8	220.9	310.0	247.1	16:45	317.8	299.5	330.73	278.72
5:00	317.8	225.7	311.4	251.4	17:00	331.8	303.7	332.58	280.83
5:15	317.8	233.7	310.5	254.4	17:15	331.8	309.2	332.11	288.92
5:30	317.8	245.4	311.8	258.5	17:30	331.8	314.9	346.77	291.91
5:45	317.8	258.8	310.2	256.1	17:45	331.8	323.8	345.62	306.83
6:00	317.8	265.1	310.5	257.6	18:00	331.8	335.3	345.02	318.64
6:15	331.8	271.7	311.1	242.4	18:15	331.8	340.2	346.02	327.25
6:30	331.8	278.6	325.8	251.2	18:30	331.8	340.4	345.02	321.38
6:45	331.8	285.6	326.1	259.1	18:45	331.8	339.5	345.80	318.09
7:00	331.8	298.5	326.0	267.3	19:00	331.8	337.2	346.06	321.95
7:15	331.8	307.2	326.3	277.4	19:15	331.8	340.6	356.38	298.82
7:30	331.8	312.2	325.5	283.2	19:30	331.8	339.1	354.97	303.56
7:45	331.8	296.4	324.9	285.9	19:45	331.8	333.5	357.00	307.83
8:00	331.8	258.2	325.4	281.4	20:00	331.8	330.5	350.17	313.78
8:15	331.8	241.3	325.7	289.4	20:15	331.8	327.6	348.48	316.21
8:30	331.8	239.3	323.4	275.1	20:30	331.8	326.2	350.31	316.93
8:45	331.8	248.8	325.1	284.7	20:45	331.8	324.5	349.69	311.75
9:00	317.8	299.7	325.6	281.6	21:00	319.2	323.6	346.97	301.54
9:15	317.8	314	304.32	283.18	21:15	319.2	338.5	332.66	296.57
9:30	317.8	317.3	303.51	285.13	21:30	317.8	333.2	333.13	293.46
9:45	317.8	304.5	307.23	277.72	21:45	317.8	329.5	332.60	285.89
10:00	317.8	302.1	308.37	267.14	22:00	317.8	321.4	333.74	284.23
10:15	317.8	301.7	309.96	270.59	22:15	317.8	315.5	331.72	273.70
10:30	317.8	299.8	307.78	282.82	22:30	317.8	306.4	332.26	270.80
10:45	317.8	296.2	308.61	274.84	22:45	317.8	295.1	333.49	266.18
11:00	317.8	296.2	308.37	270.77	23:00	307.5	283	334.13	255.08
11:15	317.8	296.5	309.69	278.08	23:15	307.5	272.6	332.00	254.47
11:30	317.8	302.8	310.63	274.56	23:30	307.5	260.3	334.33	248.47
11:45	317.8	302.1	309.33	270.75	23:45	307.5	254.8	330.95	255.75

Yours faithfully
Phub Zam

Coincidental peak load of Day(Last year):	
283.76	17-Jan-17
Maximum Load till date:	
362.09	14-Nov-17



འབྲུག་རྒྱལ་ཁོ་ལས་འཛིན།

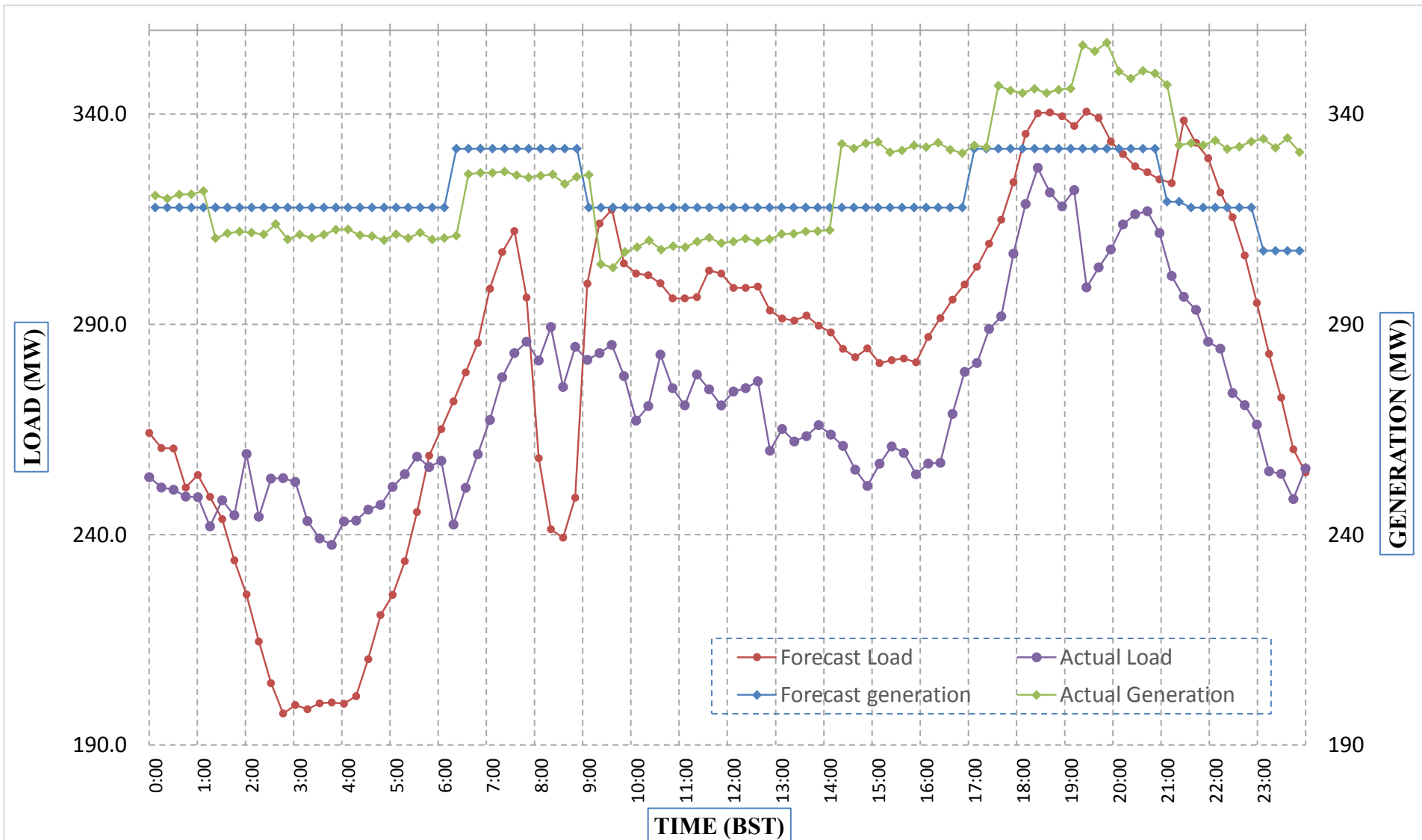
Bhutan Power Corporation Ltd.
 Bhutan Power System Operator
 Thimphu: Bhutan



Message No.: Enter your message number
 From: Shift In-charge, Control Room

Date: 18-Jan-18
 Time: 11:26

Forecast Generation & Load with Actual Generation & Load (17-Jan-2018).



Yours faithfully,
 Phub Zam

	MW	Coincidental peak load of Day(Last year):	
Peak Co-incident Generation(17-Jan-2018).	357.00	283.76	17-Jan-17
Peak Co-incident Load(17-Jan-2018).	327.25		
		Maximum Load till date:	
		362.09	14-Nov-17

Telephone: +975-02335631; Fax: +975-02335632; Email: bhutansystemoperator@bpc.bt; www.bpc.bt



འབྲུག་གླིང་མེ་ལས་འཛིན།

Bhutan Power Corporation Ltd.
Bhutan Power System Operator
Thimphu: Bhutan



Message No.: Enter your message number
From: Shift In-charge, Control Room

Date: 18-Jan-18
Time: 11:26

To
Managing Director, BPC. Email: gemtshering@bpc.bt
Director, O&MD, DGPC. Email: director.omid@drukgreen.com
General Manager, TD, BPC. Email: thinleygyeltshen@bpc.bt
General Manager, DCSD, BPC. Email: sandeeprai@bpc.bt

Sub: Load Generation Balance Report of Today (18-Jan-2018).

Hours (BST)	Forecast		Actual	
	Generation	Load	Generation	Load
0:00	295.9	250.1	333.4	255.7
0:15	295.9	233.3	331.8	252.6
0:30	295.9	225.2	332.6	255.8
0:45	295.9	212.3	333.6	249.0
1:00	309.2	209.7	333.1	245.1
1:15	309.5	205.1	333.7	240.8
1:30	309.5	202	331.6	247.9
1:45	309.5	203.9	330.7	249.6
2:00	309.5	204.2	331.2	251.0
2:15	309.5	204.3	330.7	247.6
2:30	309.5	208.7	328.7	246.3
2:45	309.5	214	328.3	248.1
3:00	309.5	211.4	330.0	243.6
3:15	309.5	214.7	337.3	250.7
3:30	309.5	228.7	332.6	255.4
3:45	309.5	244.2	331.9	257.3
4:00	309.5	243.9	330.7	253.4
4:15	309.5	244.1	331.7	252.5
4:30	309.5	251.4	331.4	251.4
4:45	309.5	255.2	330.6	253.3
5:00	309.5	256.6	329.9	256.7
5:15	309.5	262.2	311.4	252.7
5:30	309.5	264.5	310.1	254.7
5:45	309.5	266.4	304.2	251.9
6:00	309.5	270.4	312.4	251.3
6:15	324.2	275.8	310.3	253.0
6:30	324.2	279	317.7	258.6
6:45	324.2	284.2	323.1	263.6
7:00	324.2	294.3	324.5	271.0
7:15	324.2	304.4	324.3	278.2
7:30	324.2	313.7	323.4	287.5
7:45	324.2	309.5	323.5	291.2
8:00	324.2	307.3	324.4	291.0
8:15	324.2	305.3	323.6	293.2
8:30	324.2	296.1	321.8	300.3
8:45	324.2	264.9	323.6	302.1
9:00	324.2	244.1	322.3	303.5

Coincidental peak load of Day(Last year):	
264.71	18-Jan-18
Maximum Load till date:	
362.09	14-Nov-17

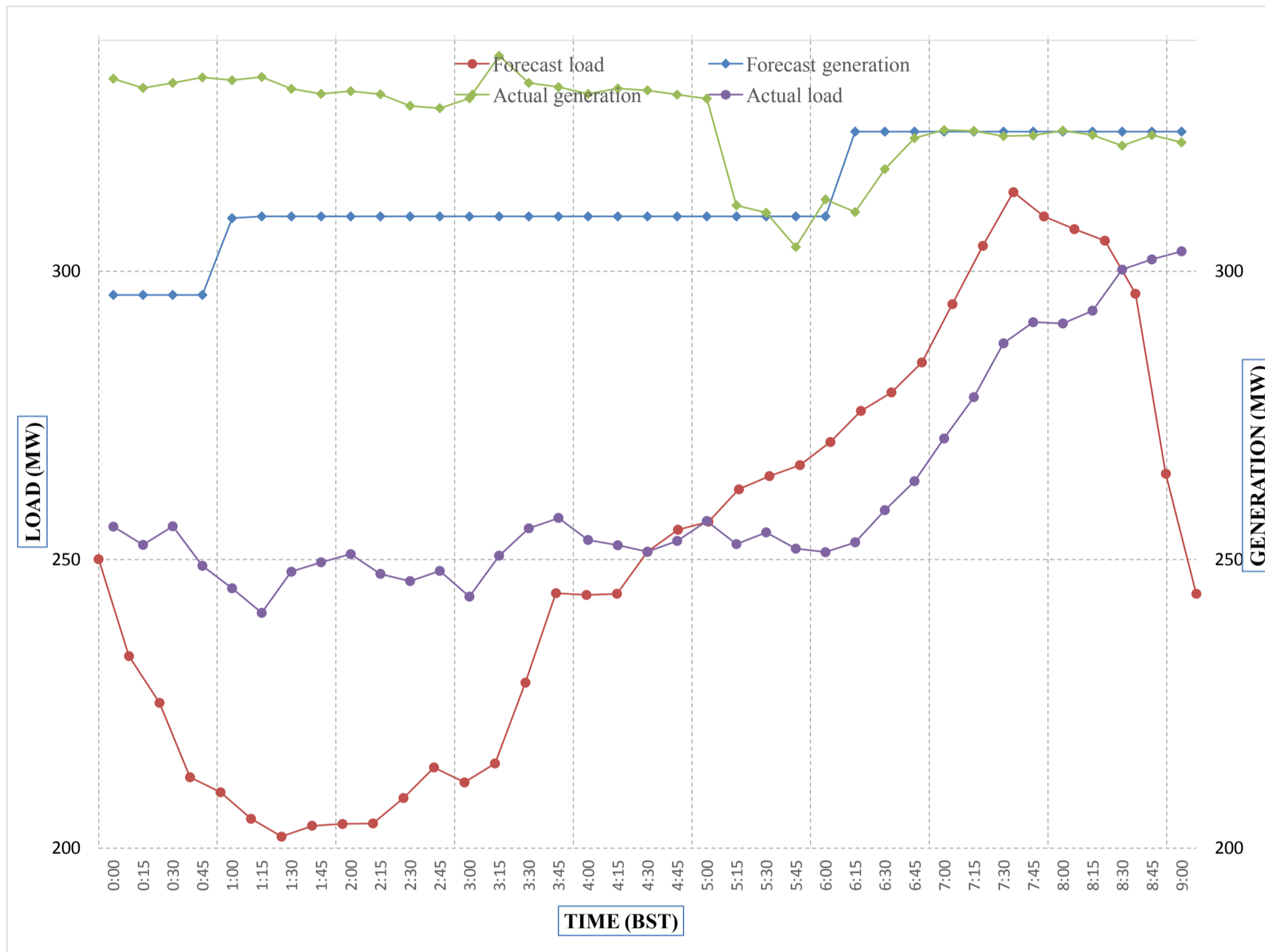
Yours faithfully,
Phub Zam



Message No.: Enter your message number
 From: Shift In-charge, Control Room

Date: 18-Jan-18
 Time: 11:26

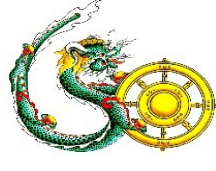
Forecast Generation & Load with Actual Generation & Load of Today from 00:00hrs to 09:00hrs(18-Jan-2018).



Yours faithfully
 Phub Zam



འབྲུག་གྲོག་ཚོའི་ལས་འདེན།
Bhutan Power Corporation Ltd.
Bhutan Power System Operator
 Thimphu: Bhutan



Message No.: Enter your message number **Date:** 18-Jan-18
From: Shift In-charge, Control Room **Time:** 11:26

To
 Managing Director, BPC. Email: gemtspering@bpc.bt
 Director, O&MD, DGPC. Email: director.umd@drukgreen.com
 General Manager, TD, BPC. Email: ktobgye@bpc.bt
 Advisor, BPC. Email: bharattamang@bpc.bt

Sub: Load Generation Balance Report of Tomorrow (19-Jan-2018).

Hours (BST)	Forecast		Hours (BST)	Forecast	
	Generation	Load		Generation	Load
0:00	331.1	207.1	12:00	331.1	290.1
0:15	331.1	201.5	12:15	331.1	293.1
0:30	331.1	202.7	12:30	331.1	293.6
0:45	331.1	199.6	12:45	331.1	286
1:00	331.1	203.1	13:00	331.1	285.1
1:15	331.1	208.6	13:15	331.1	286.3
1:30	331.1	217	13:30	331.1	286.2
1:45	331.1	225.1	13:45	331.1	283.6
2:00	331.1	231.3	14:00	331.1	282.4
2:15	331.1	232.9	14:15	331.1	277.9
2:30	331.1	245.1	14:30	331.1	275.9
2:45	331.1	244.4	14:45	331.1	277.7
3:00	331.1	244.1	15:00	331.1	277.4
3:15	331.1	242.6	15:15	331.1	279.2
3:30	331.1	246.1	15:30	331.1	278.3
3:45	331.1	246.7	15:45	331.1	278.1
4:00	331.1	249.6	16:00	331.1	277.2
4:15	331.1	248.6	16:15	331.1	285.3
4:30	331.1	252.5	16:30	331.1	286.5
4:45	331.1	253.6	16:45	331.1	293
5:00	331.1	256.2	17:00	339	299.2
5:15	331.1	259.2	17:15	339	305.7
5:30	331.1	263	17:30	339	310.3
6:45	331.8	263.7	17:45	339	320.2
6:00	339	268.3	18:00	339	331
6:15	339	269.5	18:15	339	336.6
6:30	339	270	18:30	339	335.7
6:45	339	278.7	18:45	339	334.4
7:00	339	289	19:00	339	333.9
7:15	339	298.2	19:15	339	330.4
7:30	339	305.4	19:30	339	330.4
7:45	339	303.8	19:45	339	326.8
8:00	339	300.2	20:00	339	327.3
8:15	339	300.8	20:15	339	326.4
8:30	339	301.4	20:30	339	324.2
8:45	339	296.5	20:45	339	323.2
9:00	339	243.3	21:00	331.1	321.6
9:15	331.1	335.8	21:15	331.1	333.1
9:30	331.1	310.1	21:30	331.1	331.9
9:45	331.1	298	21:45	331.1	325.7
10:00	331.1	294.5	22:00	331.1	325.6
10:15	331.1	293.1	22:15	331.1	319.9
10:30	331.1	294.7	22:30	331.1	303.6
10:45	331.1	290.9	22:45	331.1	293.5
11:00	331.1	289.3	23:00	331.1	266.3
11:15	331.1	289.3	23:15	331.1	244.6
11:30	331.1	295.4	23:30	331.1	229.4
11:45	331.1	292.1	23:45	331.1	222.7

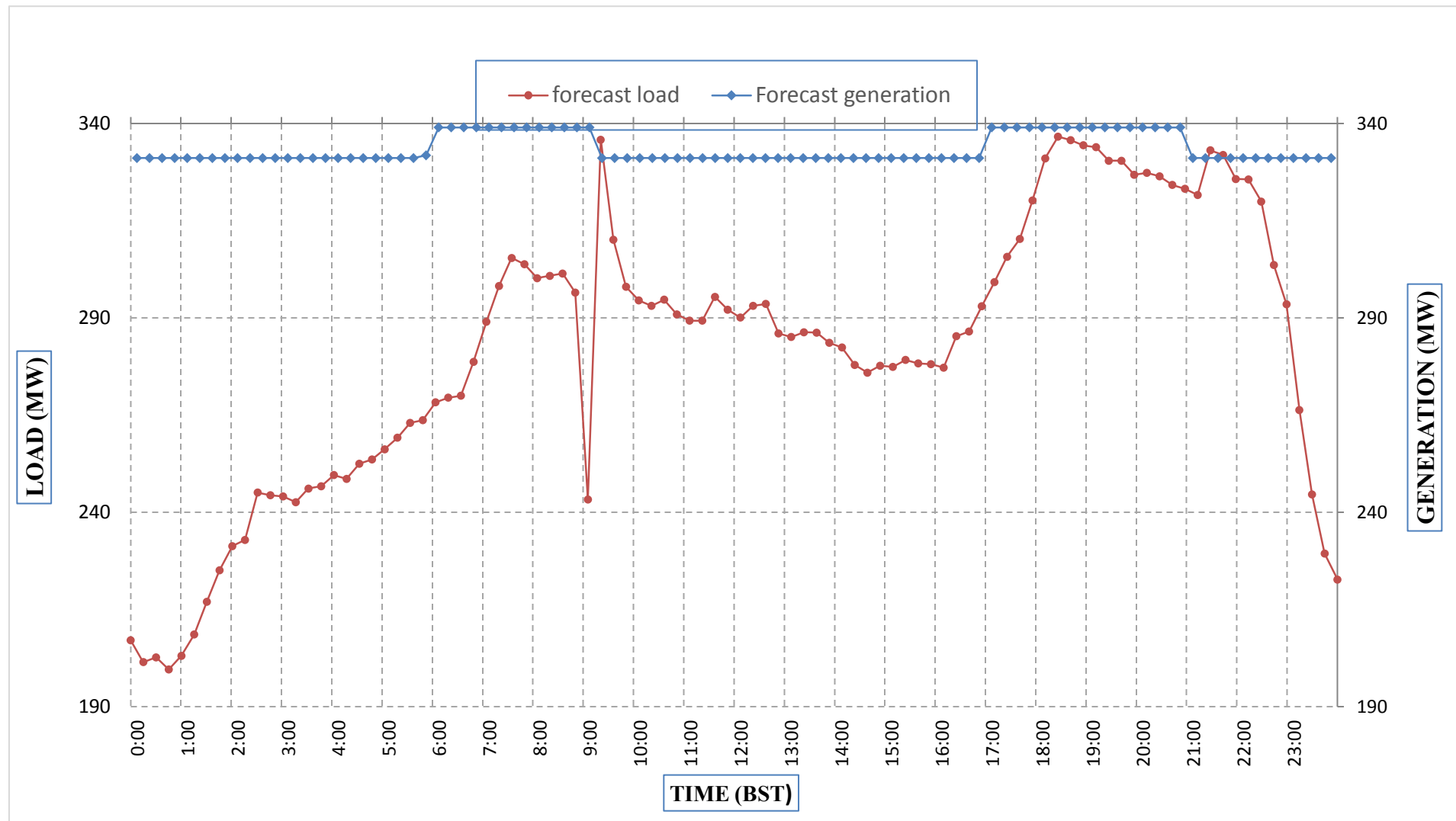
Yours faithfully,
 Phub Zam



Message No.: Enter your message number
 From: Shift In-charge, Control Room

Date: 18-Jan-18
 Time: 11:26

Forecast Generation & Load Forecast for Tomorrow (19-Jan-2018).



Yours faithfully,
 Phub Zam

	MW
Scheduled Peak Generation(19-Jan-2018).	339.00
Forecast Peak Load(19-Jan-2018).	336.60



Bhutan Power Corporation Ltd.
Bhutan Power System Operator
Thimphu: Bhutan

འབྲུག་གྲོང་ཁོངས་རྒྱུ་ལས་ཁུངས་།



Message No.: Enter your message number
From: Shift In-charge, Control Room

Date: 18-Jan-18
Time: 11:26

To
Managing Director, BPC. Email: gemtshering@bpc.bt
Director, O&MD, DGPC. Email: director.omid@drukgreen.com
General Manager, TD, BPC. Email: ktobgye@bpc.bt
Advisor, BPC. Email: bharattamang@bpc.bt

Sub: Forecast Generation and Actual Generation of Dagachhu (17-Jan-2018).

Hours (BST)	Actual Frequency	Forecast Generation	Actual Generation	Hours (BST)	Actual Frequency	Forecast Generation	Actual Generation
0:00	50.00	21.8	21.50	12:00	50.02	21.8	21.33
0:15	50.07	21.8	21.49	12:15	50.04	21.8	21.32
0:30	50.04	21.8	21.52	12:30	50.07	21.8	21.34
0:45	50.08	21.8	21.47	12:45	50.03	21.8	21.31
1:00	50.05	21.8	21.51	13:00	50.00	21.8	21.39
1:15	50.10	21.8	21.48	13:15	50.01	21.8	21.40
1:30	50.16	21.8	21.49	13:30	49.99	21.8	21.40
1:45	50.12	21.8	21.50	13:45	49.95	21.8	21.64
2:00	50.02	21.8	21.49	14:00	49.97	21.8	21.62
2:15	50.03	21.8	21.50	14:15	50.01	21.8	21.62
2:30	50.05	21.8	21.50	14:30	49.96	21.8	21.63
2:45	50.02	21.8	21.49	14:45	49.98	21.8	21.62
3:00	50.05	21.8	21.51	15:00	49.96	21.8	21.63
3:15	50.17	21.8	21.49	15:15	49.94	21.8	21.63
3:30	50.10	21.8	21.49	15:30	50.02	21.8	21.62
3:45	50.08	21.8	21.50	15:45	49.96	21.8	21.63
4:00	50.06	21.8	21.51	16:00	49.92	21.8	21.62
4:15	50.14	21.8	21.48	16:15	49.99	21.8	21.61
4:30	50.04	21.8	21.79	16:30	50.01	21.8	21.64
4:45	50.13	21.8	21.82	16:45	49.96	21.8	21.61
5:00	49.99	21.8	21.80	17:00	49.96	21.8	21.62
5:15	50.02	21.8	21.81	17:15	50.03	21.8	21.64
5:30	50.09	21.8	21.80	17:30	49.98	21.8	21.63
6:45	50.13	21.8	21.81	17:45	49.96	21.8	21.63
6:00	50.05	21.8	21.80	18:00	49.98	21.8	21.63
6:15	49.97	21.8	21.90	18:15	49.98	21.8	21.64
6:30	49.94	21.8	21.91	18:30	49.97	21.8	21.62
6:45	49.90	21.8	21.89	18:45	49.95	21.8	21.62
7:00	49.95	21.8	21.88	19:00	49.96	21.8	21.70
7:15	49.95	21.8	21.89	19:15	50.02	21.8	21.68
7:30	49.97	21.8	21.89	19:30	49.98	21.8	21.69
7:45	49.93	21.8	21.91	19:45	49.93	21.8	21.69
8:00	49.92	21.8	21.87	20:00	49.95	21.8	21.99
8:15	49.95	21.8	21.88	20:15	50.00	21.8	21.98
8:30	49.94	21.8	21.87	20:30	49.96	21.8	21.98
8:45	49.92	21.8	21.90	20:45	50.02	21.8	21.99
9:00	49.97	21.8	21.90	21:00	50.09	21.8	21.98
9:15	50.05	21.8	21.87	21:15	50.03	21.8	22.00
9:30	49.95	21.8	21.89	21:30	49.96	21.8	21.98
9:45	49.95	21.8	21.89	21:45	49.95	21.8	21.99
10:00	50.03	21.8	21.89	22:00	49.96	21.8	22.00
10:15	50.04	21.8	21.88	22:15	50.00	21.8	22.01
10:30	50.00	21.8	21.88	22:30	50.04	21.8	22.02
10:45	50.00	21.8	21.91	22:45	50.03	21.8	22.03
11:00	49.96	21.8	21.88	23:00	50.02	21.8	22.04
11:15	49.99	21.8	21.90	23:15	50.02	21.8	22.05
11:30	49.99	21.8	21.90	23:30	49.99	21.8	22.06
11:45	50.01	21.8	21.89	23:45	49.80	21.8	22.07

Yours faithfully,
Phub Zam



འབྲུག་གྲོག་མེ་ལས་འཛིན།

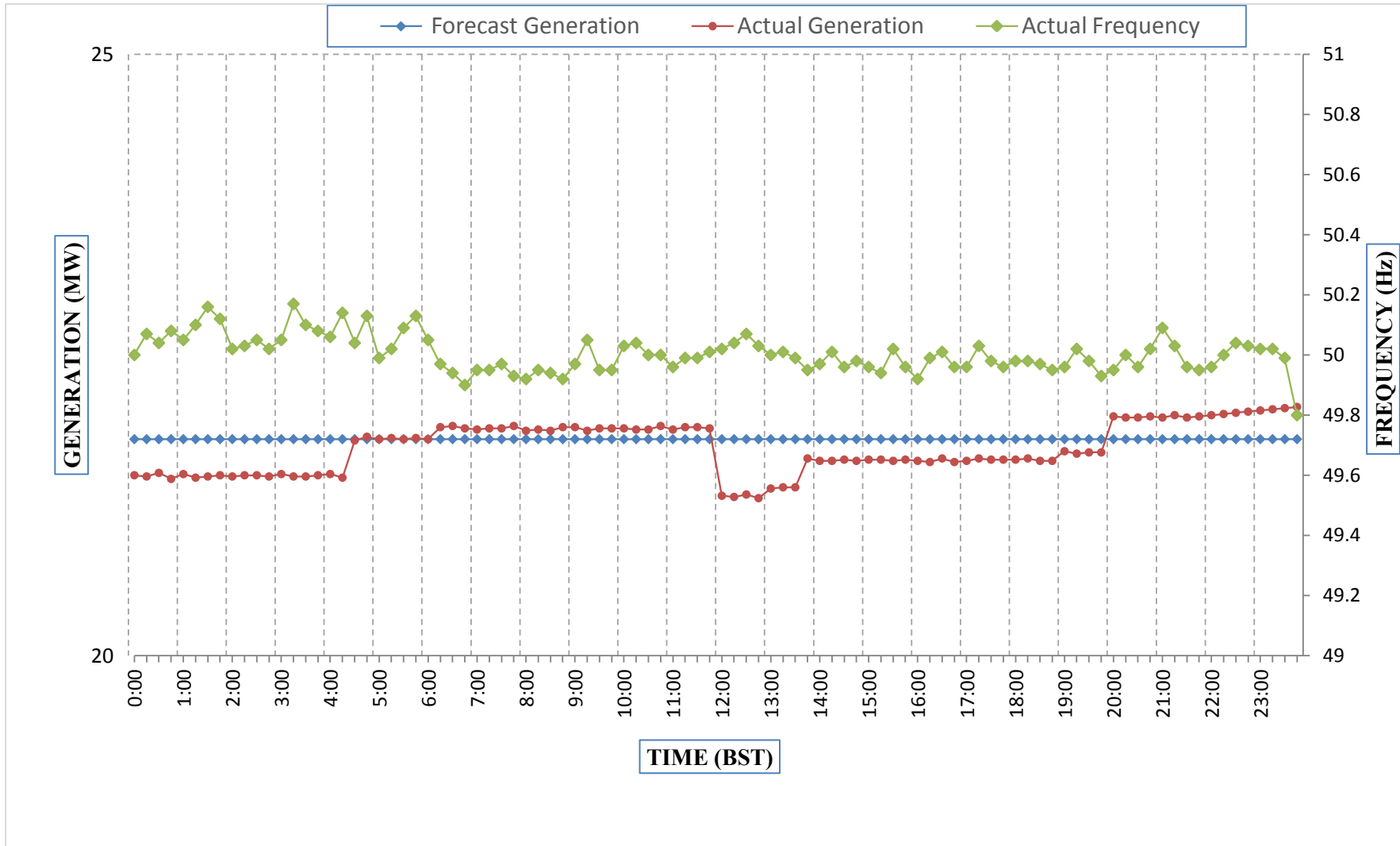
Bhutan Power Corporation Ltd.
Bhutan Power System Operator
Thimphu: Bhutan



Message No.: Enter your message number
From: Shift In-charge, Control Room

Date: 18-Jan-18
Time: 11:26

Forecast Generation & Actual Generation of Dagachhu(17-Jan-2018).



Yours faithfully,
Phub Zam