



འབྲུག་གློག་ཐོ་ལས་འཛིན།

Bhutan Power Corporation Ltd.
Bhutan Power System Operator
Thimphu: Bhutan



Message No.: Enter your message number
From: Shift In-charge, Control Room

Date: 15-Jan-18
Time: 12:26

To
Managing Director, BPC. Email: gemtshering@bpc.bt
Director, O&MD, DGPC. Email: director.omid@drukgreen.com
General Manager, TD, BPC. Email: ktobgye@bpc.bt
General Manager, DCSD, BPC. Email: sandeeprai@bpc.bt

Sub: **Load Generation Balance Report of Yesterday (14-Jan-2018).**

Hours (BST)	Forecast		Actual		Hours (BST)	Forecast		Actual	
	Generation	Load	Generation	Load		Generation	Load	Generation	Load
0:00	279.70	262.70	356.59	273.59	12:00	319.20	302.20	323.93	279.74
0:15	276.50	259.50	356.16	267.93	12:15	318.70	301.70	322.55	279.63
0:30	282.60	265.60	352.95	269.84	12:30	316.50	299.50	324.74	279.84
0:45	279.70	262.70	355.03	258.96	12:45	312.90	295.90	324.05	273.25
1:00	283.00	266.00	354.91	266.70	13:00	308.80	291.80	322.88	278.23
1:15	279.60	262.60	354.67	263.91	13:15	307.30	290.30	324.44	279.79
1:30	281.10	264.10	355.86	266.07	13:30	303.80	286.80	324.49	286.04
1:45	284.40	267.40	353.27	267.72	13:45	298.60	281.60	324.30	288.55
2:00	281.60	264.60	356.31	267.49	14:00	304.30	287.30	324.38	280.72
2:15	283.60	266.60	353.27	268.01	14:15	293.30	276.30	325.50	280.12
2:30	279.90	262.90	355.06	265.52	14:30	291.80	274.80	325.52	282.38
2:45	277.20	260.20	354.40	262.03	14:45	298.70	281.70	324.68	273.23
3:00	278.20	261.20	355.19	253.23	15:00	293.90	276.90	328.34	268.09
3:15	271.20	254.20	356.34	259.70	15:15	295.10	278.10	330.68	279.87
3:30	273.90	256.90	354.29	257.90	15:30	295.90	278.90	331.62	280.41
3:45	272.50	255.50	352.97	258.91	15:45	297.10	280.10	330.88	271.58
4:00	271.60	254.60	352.39	260.20	16:00	301.70	284.70	332.55	275.64
4:15	271.90	254.90	351.42	259.41	16:15	302.40	285.40	333.95	287.52
4:30	274.60	257.60	348.77	260.23	16:30	312.30	295.30	333.24	287.20
4:45	275.90	258.90	349.02	259.19	16:45	313.00	296.00	332.68	295.67
5:00	277.90	260.90	348.22	259.15	17:00	323.00	306.00	332.79	287.49
5:15	282.50	265.50	347.55	262.50	17:15	325.50	308.50	332.08	300.12
5:30	282.10	265.10	346.30	261.12	17:30	334.90	317.90	348.07	311.97
5:45	282.30	265.30	346.55	253.93	17:45	345.70	328.70	347.48	308.98
6:00	283.40	266.40	347.55	265.62	18:00	359.20	342.20	347.21	323.48
6:15	286.00	269.00	344.66	266.54	18:15	364.50	347.50	347.46	328.30
6:30	293.30	276.30	346.80	273.64	18:30	364.80	347.80	346.91	327.52
6:45	298.90	281.90	346.61	277.91	18:45	361.30	344.30	347.47	331.73
7:00	309.80	292.80	357.88	287.84	19:00	356.90	339.90	346.17	336.14
7:15	319.80	302.80	339.23	296.97	19:15	352.90	348.90	349.34	332.23
7:30	323.20	306.20	338.70	299.73	19:30	352.90	350.90	347.71	326.92
7:45	327.50	310.50	337.52	301.13	19:45	352.90	341.30	347.64	326.00
8:00	328.80	311.80	336.73	301.49	20:00	352.90	338.50	349.45	326.18
8:15	327.00	310.00	339.66	297.61	20:15	352.90	340.80	346.47	317.80
8:30	325.90	308.90	337.36	297.57	20:30	352.90	338.60	347.10	319.18
8:45	322.20	305.20	338.04	306.09	20:45	352.70	335.70	346.77	309.56
9:00	321.40	304.40	338.00	307.85	21:00	352.20	335.20	347.81	314.91
9:15	272.10	255.10	338.19	303.18	21:15	337.30	336.20	347.30	311.04
9:30	337.30	324.80	337.76	307.05	21:30	337.30	327.10	347.32	294.22
9:45	324.40	307.40	323.77	302.43	21:45	331.70	314.70	345.81	280.42
10:00	321.10	304.10	325.23	286.55	22:00	317.10	300.10	346.90	295.30
10:15	318.60	301.60	325.87	289.84	22:15	284.50	267.50	334.91	285.77
10:30	320.30	303.30	323.95	289.69	22:30	261.30	244.30	333.41	283.19
10:45	320.70	303.70	324.05	289.69	22:45	247.30	230.30	333.45	275.55
11:00	318.20	301.20	324.28	285.23	23:00	236.20	219.20	333.09	274.50
11:15	317.60	300.60	322.27	278.26	23:15	230.20	213.20	333.52	267.00
11:30	321.00	304.00	324.87	288.75	23:30	230.90	213.90	333.35	263.38
11:45	319.70	302.70	324.48	290.98	23:45	232.30	215.30	333.61	257.20

Yours faithfully
Jangchuk Selden

Coincidental peak load of Day(Last year):	
279.13	14-Jan-17
Maximum Load till date:	
362.09MW	14-Nov-17



འབྲུག་རྒྱལ་ཁོ་ལས་འཛིན།

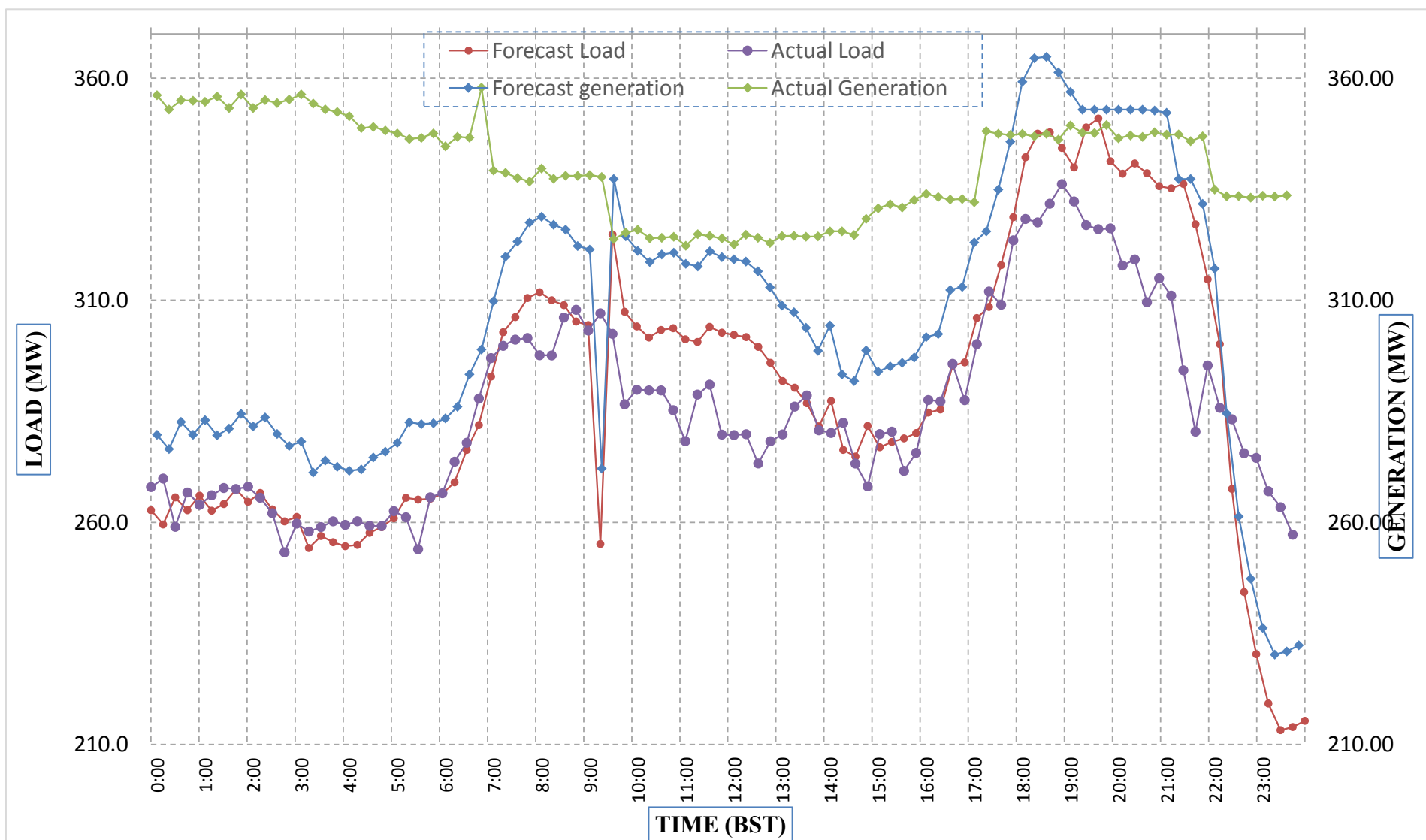
Bhutan Power Corporation Ltd.
 Bhutan Power System Operator
 Thimphu: Bhutan



Message No.: Enter your message number
 From: Shift In-charge, Control Room

Date: 15-Jan-18
 Time: 12:26

Forecast Generation & Load with Actual Generation & Load (14-Jan-2018).



Yours faithfully,
 Jangchuk Selden

	MW	Coincidental peak load of Day(Last year):	
Peak Co-incident Generation(14-Jan-2018).	357.88	273.23	14-Jan-17
Peak Co-incident Load(14-Jan-2018).	336.14		
		Maximum Load till date:	
		362.09MW	14-Nov-17

Telephone: +975-02335631; Fax: +975-02335632; Email: bhutansystemoperator@bpc.bt; www.bpc.bt



འབྲུག་གྲོག་མེ་ལས་འཛིན།

Bhutan Power Corporation Ltd.
Bhutan Power System Operator
Thimphu: Bhutan



Message No.: Enter your message number
From: Shift In-charge, Control Room

Date: 15-Jan-18
Time: 12:26

To
Managing Director, BPC. Email: gemtshering@bpc.bt
Director, O&MD, DGPC. Email: director.umd@drukgreen.com
General Manager, TD, BPC. Email: thinleygyeltshen@bpc.bt
General Manager, DCSD, BPC. Email: sandeeprai@bpc.bt

Sub: Load Generation Balance Report of Today (15-Jan-2018).

Hours (BST)	Forecast		Actual	
	Generation	Load	Generation	Load
0:00	333.00	213.40	334.87	256.99
0:15	333.00	215.70	333.38	251.79
0:30	333.00	219.60	332.77	255.32
0:45	333.00	228.40	331.78	249.05
1:00	333.00	225.70	334.34	246.56
1:15	333.00	232.00	334.00	249.57
1:30	333.00	243.00	333.43	251.05
1:45	333.00	253.70	331.44	251.87
2:00	333.00	253.80	333.56	253.90
2:15	333.00	254.30	331.23	251.14
2:30	333.00	255.30	332.88	247.89
2:45	333.00	255.30	333.95	243.14
3:00	333.00	257.20	334.33	250.82
3:15	333.00	253.90	333.48	251.36
3:30	333.00	256.80	332.51	252.24
3:45	333.00	255.30	335.04	250.83
4:00	333.00	254.40	332.84	247.75
4:15	333.00	252.50	364.11	240.84
4:30	333.00	257.00	362.09	241.82
4:45	333.00	257.70	363.81	253.04
5:00	333.00	260.00	363.54	255.90
5:15	333.00	263.70	380.98	258.73
5:30	347.20	264.70	383.21	258.58
5:45	347.20	267.40	384.66	246.81
6:00	347.20	267.20	381.77	254.32
6:15	347.20	270.90	383.14	263.89
6:30	347.20	276.90	381.63	273.12
6:45	347.20	286.60	394.73	278.16
7:00	347.20	295.60	397.34	289.51
7:15	347.20	304.90	397.22	299.52
7:30	347.20	310.30	395.90	301.00
7:45	347.20	310.90	396.77	296.88
8:00	347.20	311.60	394.66	296.26
8:15	347.20	309.90	395.10	308.06
8:30	347.20	310.60	392.22	303.98
8:45	347.20	307.30	394.45	305.38
9:00	333.00	284.90	394.19	299.84

Coincidental peak load of Day(Last year):	
271.48	15-Jan-17

Maximum Load till date:	
362.09MW	14-Nov-17

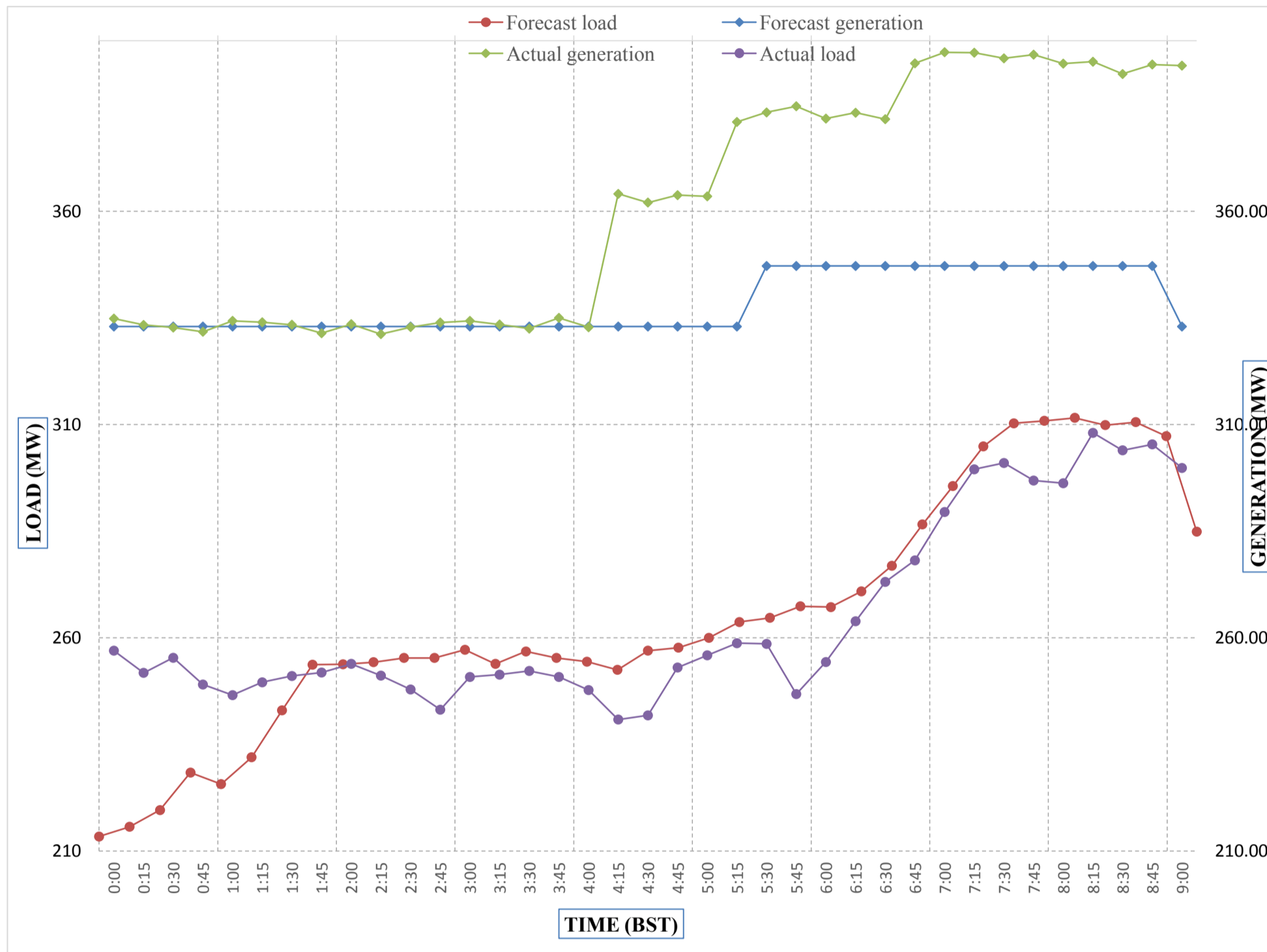
Yours faithfully,
Jangchuk Selden



Message No.: Enter your message number
 From: Shift In-charge, Control Room

Date: 15-Jan-18
 Time: 12:26

Forecast Generation & Load with Actual Generation & Load of Today from 00:00hrs to 09:00hrs(15-Jan-2018).



Yours faithfully Jangchuk Selden



འབྲུག་རྒྱལ་ཁོག་གི་འགྲུལ་རྒྱུ་ལས་ཁུངས་ལ.ལ.
Bhutan Power Corporation Ltd.
Bhutan Power System Operator
Thimphu: Bhutan



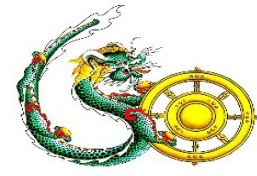
Message No.: Enter your message number **Date:** 15-Jan-18
From: Shift In-charge, Control Room **Time:** 12:26

To
 Managing Director, BPC. Email: gemtshering@bpc.bt
 Director, O&MD, DGPC. Email: director.umd@drukgreen.com
 General Manager, TD, BPC. Email: ktobgye@bpc.bt
 Advisor, BPC. Email: bharattamang@bpc.bt

Sub: Load Generation Balance Report of Tomorrow (16-Jan-2018).

Hours (BST)	Forecast		Hours (BST)	Forecast	
	Generation	Load		Generation	Load
0:00	261.80	221.80	12:00	336.40	298.50
0:15	255.70	215.70	12:15	336.40	297.30
0:30	257.90	217.90	12:30	335.50	295.50
0:45	248.00	208.00	12:45	331.80	291.80
1:00	256.60	216.60	13:00	327.90	287.90
1:15	247.80	207.80	13:15	327.30	287.30
1:30	246.00	206.00	13:30	328.30	288.30
1:45	247.60	207.60	13:45	325.20	285.20
2:00	246.60	206.60	14:00	324.40	284.40
2:15	246.00	206.00	14:15	318.80	278.80
2:30	248.90	208.90	14:30	318.70	278.70
2:45	251.20	211.20	14:45	322.00	282.00
3:00	252.50	212.50	15:00	318.50	278.50
3:15	252.10	212.10	15:15	316.50	276.50
3:30	265.50	225.50	15:30	317.00	277.00
3:45	277.20	237.20	15:45	314.90	274.90
4:00	284.10	244.10	16:00	323.50	283.50
4:15	286.70	246.70	16:15	327.30	287.30
4:30	292.70	252.70	16:30	332.80	292.80
4:45	295.50	255.50	16:45	336.40	297.40
5:00	299.60	259.60	17:00	342.50	302.50
5:15	303.70	263.70	17:15	348.70	308.70
5:30	305.60	265.60	17:30	352.20	318.50
6:45	316.80	276.80	17:45	352.20	327.60
6:00	321.50	281.50	18:00	352.20	339.10
6:15	324.70	284.70	18:15	352.20	344.10
6:30	326.60	286.60	18:30	352.20	343.20
6:45	330.40	290.40	18:45	380.10	343.40
7:00	339.50	299.50	19:00	380.10	340.10
7:15	349.10	309.10	19:15	383.50	345.40
7:30	352.20	321.00	19:30	383.50	344.00
7:45	352.20	320.00	19:45	377.50	337.50
8:00	349.20	309.20	20:00	352.20	333.20
8:15	333.50	293.50	20:15	352.20	333.00
8:30	311.40	271.40	20:30	352.20	332.00
8:45	283.70	243.70	20:45	352.20	328.90
9:00	305.80	265.80	21:00	352.20	322.60
9:15	336.40	315.70	21:15	336.40	325.20
9:30	336.40	320.40	21:30	336.40	320.60
9:45	336.40	305.20	21:45	336.40	314.00
10:00	336.40	302.30	22:00	336.40	307.90
10:15	336.40	301.20	22:15	336.40	300.60
10:30	336.40	299.10	22:30	333.00	293.00
10:45	335.20	295.20	22:45	324.20	284.20
11:00	335.80	295.80	23:00	316.70	276.70
11:15	336.40	297.30	23:15	311.80	271.80
11:30	336.40	302.30	23:30	308.40	268.40
11:45	336.40	302.30	23:45	306.00	266.00

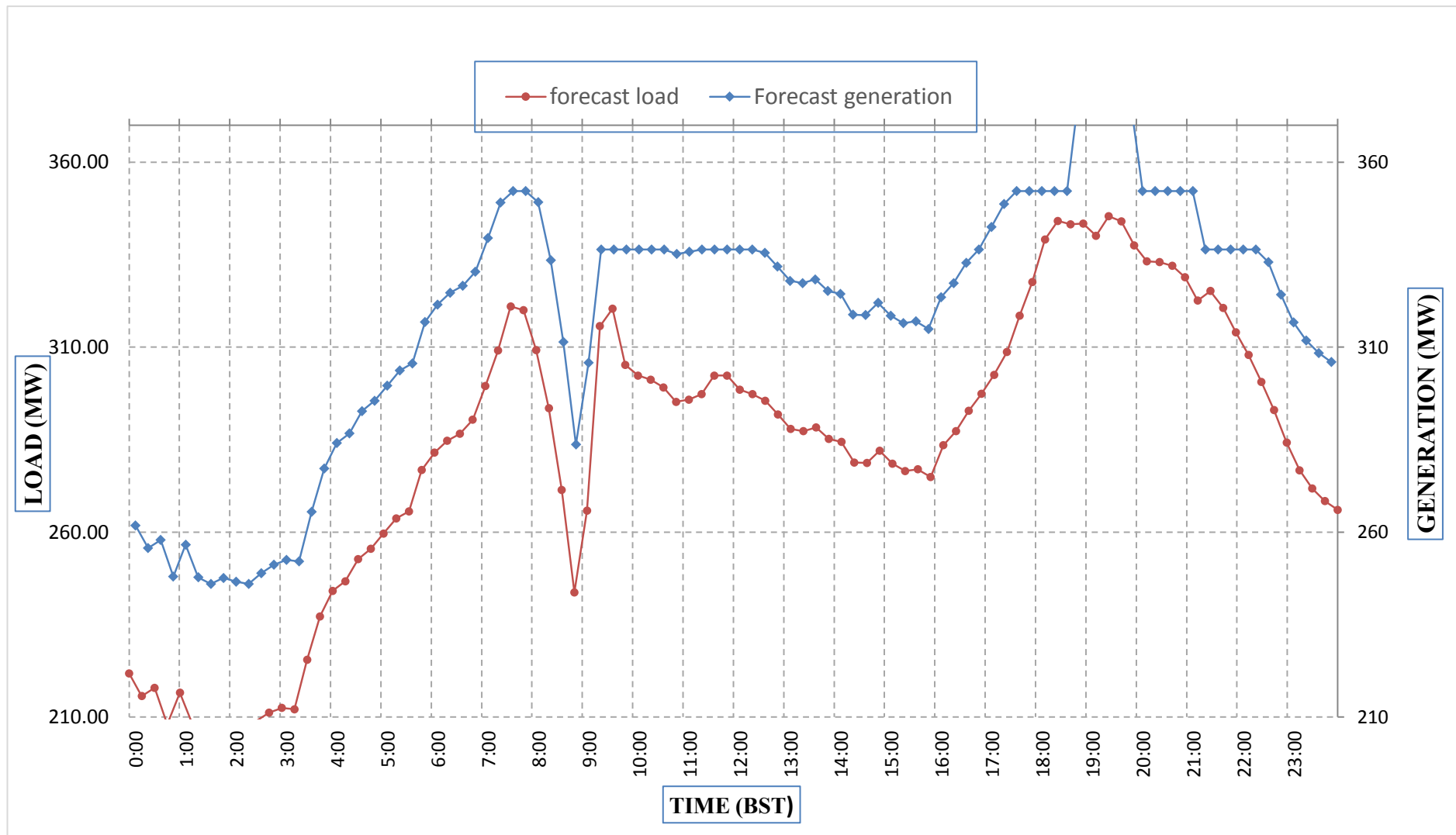
Yours faithfully,
 Jangchuk Selden



Message No.: Enter your message number
 From: Shift In-charge, Control Room

Date: 15-Jan-18
 Time: 12:26

Forecast Generation & Load Forecast for Tomorrow (16-Jan-2018).



Yours faithfully,
 Jangchuk Selden

	MW
Scheduled Peak Generation(16-Jan-2018).	383.50
Forecast Peak Load(16-Jan-2018).	345.40



འབྲུག་གྲོག་ལེ་ལས་འཛིན།

Bhutan Power Corporation Ltd.
 Bhutan Power System Operator
 Thimphu: Bhutan



Message No.:

Enter your message number

Date: 15-Jan-18

From:

Shift In-charge, Control Room

Time: 12:26

To

Managing Director, BPC. Email: gemtshering@bpc.bt
 Director, O&MD, DGPC. Email: director.umd@drukgreen.com
 General Manager, TD, BPC. Email: ktobgye@bpc.bt
 Advisor, BPC. Email: bharattamang@bpc.bt

Sub:

Forecast Generation and Actual Generation of Dagachhu (14-Jan-2018).

Hours (BST)	Actual Frequency	Forecast Generation	Actual Generation	Hours (BST)	Actual Frequency	Forecast Generation	Actual Generation
0:00	49.94	22.50	22.55	12:00	50.00	22.50	22.32
0:15	49.96	22.50	22.54	12:15	49.98	22.50	22.35
0:30	49.92	22.50	22.55	12:30	49.99	22.50	22.33
0:45	49.98	22.50	22.54	12:45	50.00	22.50	22.35
1:00	50.00	22.50	22.55	13:00	50.05	22.50	22.35
1:15	49.98	22.50	22.54	13:15	50.05	22.50	22.34
1:30	49.96	22.50	22.56	13:30	50.04	22.50	22.36
1:45	49.99	22.50	22.53	13:45	50.03	22.50	22.35
2:00	49.98	22.50	22.54	14:00	50.10	22.50	22.34
2:15	49.99	22.50	22.54	14:15	50.04	22.50	22.33
2:30	49.96	22.50	22.56	14:30	50.03	22.50	22.35
2:45	49.99	22.50	22.56	14:45	50.02	22.50	18.02
3:00	49.95	22.50	22.53	15:00	50.03	22.50	22.37
3:15	49.95	22.50	22.55	15:15	49.97	22.50	22.37
3:30	49.96	22.50	22.34	15:30	49.99	22.50	22.34
3:45	50.00	22.50	22.34	15:45	50.01	22.50	22.34
4:00	49.94	22.50	22.36	16:00	50.00	22.50	22.36
4:15	49.97	22.50	22.35	16:15	49.99	22.50	22.34
4:30	49.98	22.50	22.35	16:30	49.98	22.50	22.35
4:45	49.94	22.50	22.36	16:45	50.02	22.50	22.36
5:00	49.90	22.50	22.36	17:00	50.02	22.50	22.36
5:15	49.91	22.50	22.35	17:15	50.03	22.50	22.36
5:30	49.98	22.50	22.35	17:30	50.04	22.50	22.35
6:45	50.03	22.50	22.35	17:45	50.07	22.50	22.33
6:00	50.03	22.50	22.34	18:00	49.98	22.50	22.33
6:15	50.02	22.50	22.35	18:15	49.99	22.50	22.35
6:30	49.98	22.50	22.36	18:30	49.96	22.50	22.33
6:45	49.94	22.50	22.35	18:45	49.95	22.50	22.33
7:00	50.00	22.50	22.33	19:00	49.96	22.50	22.31
7:15	49.93	22.50	22.34	19:15	49.95	22.50	22.32
7:30	49.95	22.50	22.34	19:30	49.93	22.50	22.32
7:45	49.92	22.50	22.34	19:45	49.97	22.50	22.32
8:00	49.98	22.50	22.32	20:00	49.97	22.50	22.31
8:15	49.97	22.50	22.32	20:15	50.02	22.50	22.30
8:30	50.01	22.50	22.33	20:30	49.98	22.50	22.34
8:45	49.99	22.50	22.32	20:45	50.01	22.50	22.34
9:00	49.94	22.50	22.33	21:00	49.94	22.50	22.35
9:15	49.92	22.50	22.34	21:15	50.03	22.50	22.35
9:30	50.01	22.50	22.33	21:30	50.04	22.50	22.34
9:45	50.01	22.50	22.33	21:45	50.10	22.50	22.34
10:00	49.96	22.50	22.34	22:00	49.98	22.50	22.34
10:15	49.97	22.50	22.33	22:15	50.04	22.50	22.33
10:30	49.94	22.50	22.34	22:30	50.03	22.50	22.31
10:45	50.01	22.50	22.34	22:45	50.04	22.50	22.35
11:00	50.03	22.50	22.34	23:00	50.00	22.50	22.33
11:15	50.02	22.50	22.35	23:15	49.98	22.50	22.33
11:30	50.00	22.50	22.34	23:30	50.03	22.50	22.34
11:45	50.05	22.50	22.35	23:45	50.07	22.50	22.32

Yours faithfully,
 Jangchuk Selden



འབྲུག་གྲོག་ཚེ་ལས་འཛིན།

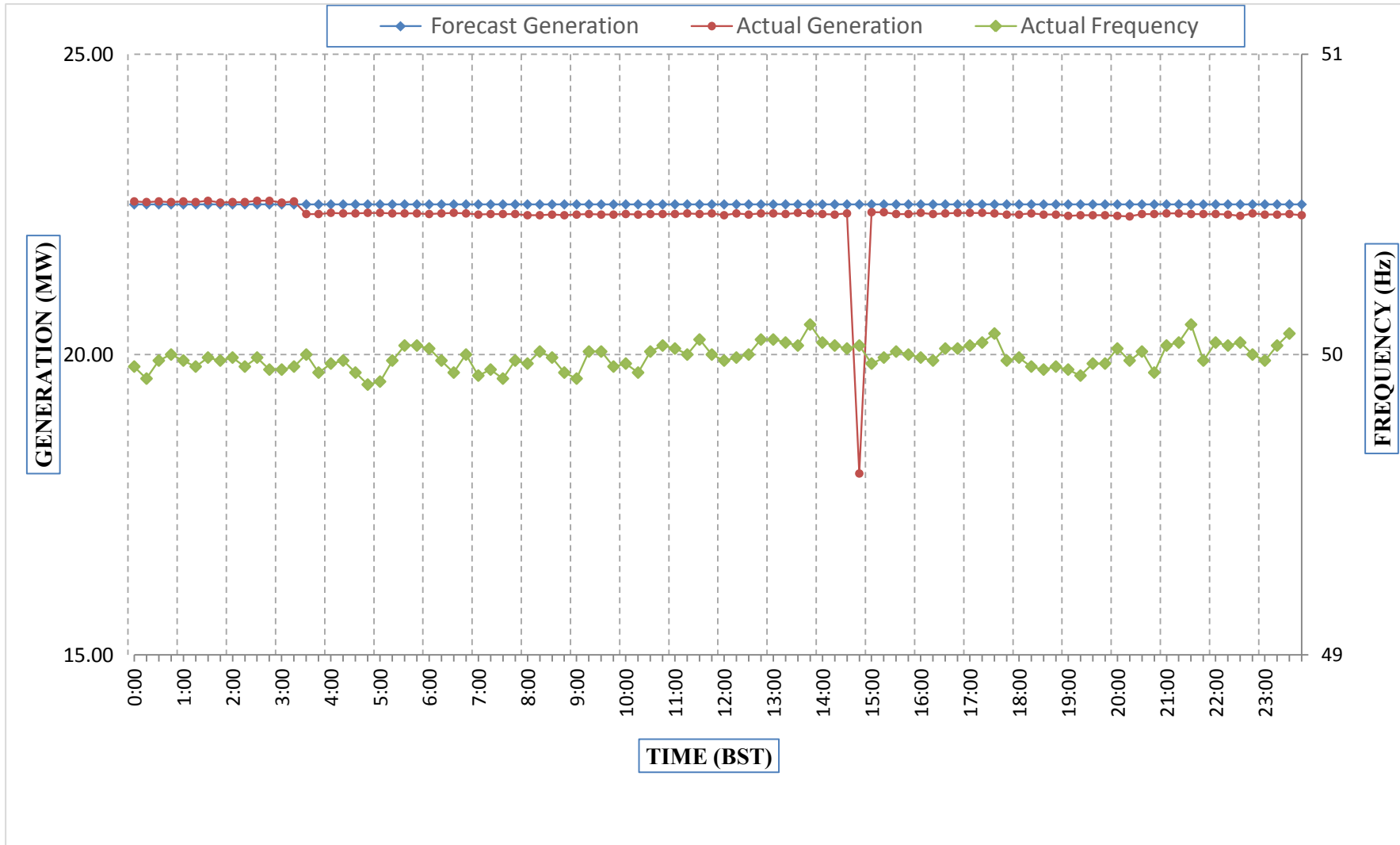
Bhutan Power Corporation Ltd.
Bhutan Power System Operator
Thimphu: Bhutan



Message No.: Enter your message number
From: Shift In-charge, Control Room

Date: 15-Jan-18
Time: 12:26

Forecast Generation & Actual Generation of Dagachhu(14-Jan-2018).



Yours faithfully,
Jangchuk Selden