



འབྲུག་རྒྱལ་ཁོ་ལས་འཛིན།

Bhutan Power Corporation Ltd.
Bhutan Power System Operator
Thimphu: Bhutan



Message No.: Enter your message number
From: Shift In-charge, Control Room

Date: 14-Jan-18
Time: 12:39

To
Managing Director, BPC. Email: gemtshering@bpc.bt
Director, O&MD, DGPC. Email: director.umd@drukgreen.com
General Manager, TD, BPC. Email: ktobgye@bpc.bt
General Manager, DCSD, BPC. Email: sandeeprai@bpc.bt

Sub: **Load Generation Balance Report of Yesterday (13-Jan-2018).**

Hours (BST)	Forecast		Actual		Hours (BST)	Forecast		Actual	
	Generation	Load	Generation	Load		Generation	Load	Generation	Load
0:00	308.67	298.09	308.67	298.09	12:00	298.09	308.67	298.09	308.67
0:15	302.91	302.53	302.91	302.53	12:15	302.53	302.91	302.53	302.91
0:30	299.72	302.51	299.72	302.51	12:30	302.51	299.72	302.51	299.72
0:45	303.70	303.70	303.70	303.70	12:45	303.70	303.70	303.70	303.70
1:00	300.30	304.59	300.30	304.59	13:00	304.59	300.30	304.59	300.30
1:15	294.05	309.92	294.05	309.92	13:15	309.92	294.05	309.92	294.05
1:30	293.05	313.73	293.05	313.73	13:30	313.73	293.05	313.73	293.05
1:45	288.07	312.74	288.07	312.74	13:45	312.74	288.07	312.74	288.07
2:00	285.03	311.60	285.03	311.60	14:00	311.60	285.03	311.60	285.03
2:15	286.92	331.37	286.92	331.37	14:15	331.37	286.92	331.37	286.92
2:30	279.77	329.61	279.77	329.61	14:30	329.61	279.77	329.61	279.77
2:45	288.65	330.52	288.65	330.52	14:45	330.52	288.65	330.52	288.65
3:00	292.03	328.59	292.03	328.59	15:00	328.59	292.03	328.59	292.03
3:15	287.05	331.42	287.05	331.42	15:15	331.42	287.05	331.42	287.05
3:30	286.25	329.63	286.25	329.63	15:30	329.63	286.25	329.63	286.25
3:45	279.62	330.96	279.62	330.96	15:45	330.96	279.62	330.96	279.62
4:00	284.72	328.84	284.72	328.84	16:00	328.84	284.72	328.84	284.72
4:15	283.67	330.37	283.67	330.37	16:15	330.37	283.67	330.37	283.67
4:30	286.97	333.17	286.97	333.17	16:30	333.17	286.97	333.17	286.97
4:45	296.85	332.83	296.85	332.83	16:45	332.83	296.85	332.83	296.85
5:00	305.26	332.88	305.26	332.88	17:00	332.88	305.26	332.88	305.26
5:15	314.25	333.12	314.25	333.12	17:15	333.12	314.25	333.12	314.25
5:30	315.92	347.92	315.92	347.92	17:30	347.92	315.92	347.92	315.92
5:45	331.52	347.23	331.52	347.23	17:45	347.23	331.52	347.23	331.52
6:00	347.23	346.96	347.23	346.96	18:00	346.96	347.23	346.96	347.23
6:15	347.94	350.55	347.94	350.55	18:15	350.55	347.94	350.55	347.94
6:30	342.58	357.09	342.58	357.09	18:30	357.09	342.58	357.09	342.58
6:45	345.50	356.93	345.50	356.93	18:45	356.93	345.50	356.93	345.50
7:00	344.38	355.59	344.38	355.59	19:00	355.59	344.38	355.59	344.38
7:15	339.27	378.96	339.27	378.96	19:15	378.96	339.27	378.96	339.27
7:30	335.59	373.02	335.59	373.02	19:30	373.02	335.59	373.02	335.59
7:45	328.88	375.78	328.88	375.78	19:45	375.78	328.88	375.78	328.88
8:00	321.32	376.64	321.32	376.64	20:00	376.64	321.32	376.64	321.32
8:15	319.89	375.29	319.89	375.29	20:15	375.29	319.89	375.29	319.89
8:30	310.64	375.18	310.64	375.18	20:30	375.18	310.64	375.18	310.64
8:45	305.46	376.02	305.46	376.02	20:45	376.02	305.46	376.02	305.46
9:00	287.59	376.74	287.59	376.74	21:00	376.74	287.59	376.74	287.59
9:15	295.04	376.55	295.04	376.55	21:15	376.55	295.04	376.55	295.04
9:30	292.28	376.53	292.28	376.53	21:30	376.53	292.28	376.53	292.28
9:45	300.05	374.31	300.05	374.31	21:45	374.31	300.05	374.31	300.05
10:00	292.88	370.26	292.88	370.26	22:00	370.26	292.88	370.26	292.88
10:15	288.77	374.32	288.77	374.32	22:15	374.32	288.77	374.32	288.77
10:30	284.35	372.52	284.35	372.52	22:30	372.52	284.35	372.52	284.35
10:45	280.12	372.42	280.12	372.42	22:45	372.42	280.12	372.42	280.12
11:00	275.19	371.19	275.19	371.19	23:00	371.19	275.19	371.19	275.19
11:15	272.38	358.59	272.38	358.59	23:15	358.59	272.38	358.59	272.38
11:30	271.59	353.68	271.59	353.68	23:30	353.68	271.59	353.68	271.59
11:45	271.03	355.77	271.03	355.77	23:45	355.77	271.03	355.77	271.03

Yours faithfully
Phub Zam

Coincidental peak load of Day(Last year):	
281.17	13-Jan-17
Maximum Load till date:	
362.09MW	14-Nov-17



འབྲུག་གྲོག་མེ་ལས་འཛིན།

Bhutan Power Corporation Ltd.
 Bhutan Power System Operator
 Thimphu: Bhutan



Message No.: Enter your message number
 From: Shift In-charge, Control Room

Date: 14-Jan-18
 Time: 12:39

Forecast Generation & Load with Actual Generation & Load (13-Jan-2018).



Yours faithfully,

Phub Zam

	MW	Coincidental peak load of Day(Last year):	
Peak Co-incident Generation(13-Jan-2018).	378.96	281.17	13-Jan-17
Peak Co-incident Load(13-Jan-2018).	378.96		
		Maximum Load till date:	
		362.09MW	14-Nov-17

Telephone: +975-02335631; Fax: +975-02335632; Email: bhutansystemoperator@bpc.bt; www.bpc.bt



འབྲུག་གྲོག་མེ་ལས་འཛིན།

Bhutan Power Corporation Ltd.
Bhutan Power System Operator
Thimphu: Bhutan



Message No.: Enter your message number
From: Shift In-charge, Control Room

Date: 14-Jan-18
Time: 12:39

To
Managing Director, BPC. Email: gemtshering@bpc.bt
Director, O&MD, DGPC. Email: director.omb@drukgreen.com
General Manager, TD, BPC. Email: thinleygyeltshen@bpc.bt
General Manager, DCSD, BPC. Email: sandeeprai@bpc.bt

Sub: Load Generation Balance Report of Today (14-Jan-2018).

Hours (BST)	Forecast		Actual	
	Generation	Load	Generation	Load
0:00	279.70	262.70	356.59	273.59
0:15	276.50	259.50	356.16	267.93
0:30	282.60	265.60	352.95	269.84
0:45	279.70	262.70	355.03	258.96
1:00	283.00	266.00	354.91	266.70
1:15	279.60	262.60	354.67	263.91
1:30	281.10	264.10	355.86	266.07
1:45	284.40	267.40	353.27	267.72
2:00	281.60	264.60	356.31	267.49
2:15	283.60	266.60	353.27	268.01
2:30	279.90	262.90	355.06	265.52
2:45	277.20	260.20	354.40	262.03
3:00	278.20	261.20	355.19	253.23
3:15	271.20	254.20	356.34	259.70
3:30	273.90	256.90	354.29	257.90
3:45	272.50	255.50	352.97	258.91
4:00	271.60	254.60	352.39	260.20
4:15	271.90	254.90	351.42	259.41
4:30	274.60	257.60	348.77	260.23
4:45	275.90	258.90	349.02	259.19
5:00	277.90	260.90	348.22	259.15
5:15	282.50	265.50	347.55	262.50
5:30	282.10	265.10	346.30	261.12
5:45	282.30	265.30	346.55	253.93
6:00	283.40	266.40	347.55	265.62
6:15	286.00	269.00	344.66	266.54
6:30	293.30	276.30	346.80	273.64
6:45	298.90	281.90	346.61	277.91
7:00	309.80	292.80	357.88	287.84
7:15	319.80	302.80	339.23	296.97
7:30	323.20	306.20	338.70	299.73
7:45	327.50	310.50	337.52	301.13
8:00	328.80	311.80	336.73	301.49
8:15	327.00	310.00	339.66	297.61
8:30	325.90	308.90	337.36	297.57
8:45	322.20	305.20	338.04	306.09
9:00	321.40	304.40	338.00	307.85

Coincidental peak load of Day(Last year):	
273.13	14-Jan-17

Maximum Load till date:	
362.09MW	14-Nov-17

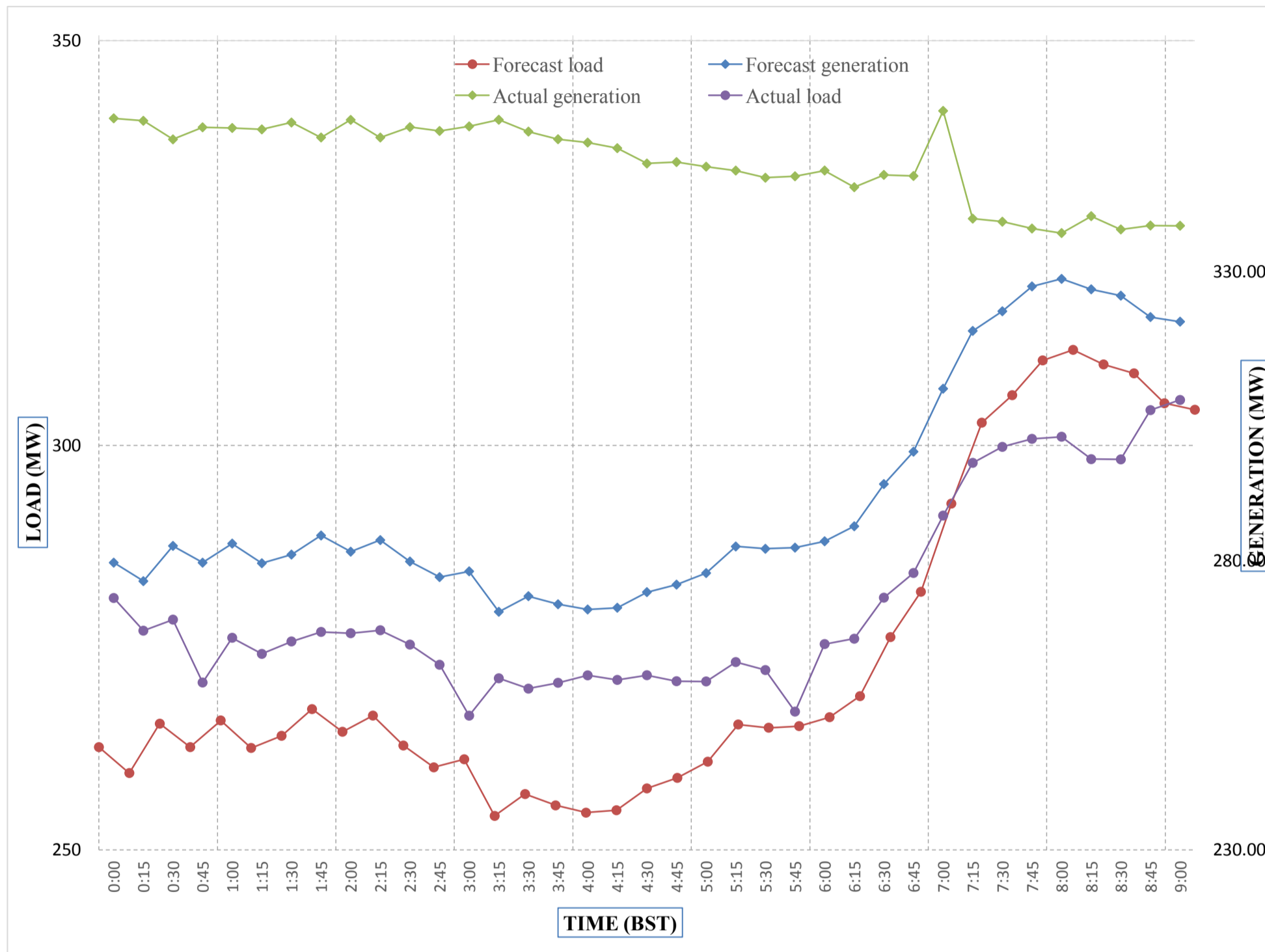
Yours faithfully,
Phub zam



Message No.: Enter your message number
 From: Shift In-charge, Control Room

Date: 14-Jan-18
 Time: 12:39

Forecast Generation & Load with Actual Generation & Load of Today from 00:00hrs to 09:00hrs(14-Jan-2018).



Yours faithfully Phub Zam



འབྲུག་རྒྱལ་ཁོག་གི་འགྲུལ་རྒྱུ་ལས་ཁུངས་ལ.འཛུགས་ལེགས་ལས་ཁུངས་ལ.
Bhutan Power Corporation Ltd.
Bhutan Power System Operator
Thimphu: Bhutan



Message No.: Enter your message number **Date:** 14-Jan-18
From: Shift In-charge, Control Room **Time:** 12:39

To
 Managing Director, BPC. Email: gemtshering@bpc.bt
 Director, O&MD, DGPC. Email: director.umd@drukgreen.com
 General Manager, TD, BPC. Email: ktobgye@bpc.bt
 Advisor, BPC. Email: bharattamang@bpc.bt

Sub: **Load Generation Balance Report of Tomorrow (15-Jan-2018).**

Hours (BST)	Forecast		Hours (BST)	Forecast	
	Generation	Load		Generation	Load
0:00	333.00	213.40	12:00	333.00	303.90
0:15	333.00	215.70	12:15	333.00	302.70
0:30	333.00	219.60	12:30	333.00	301.80
0:45	333.00	228.40	12:45	333.00	298.30
1:00	333.00	225.70	13:00	333.00	293.70
1:15	333.00	232.00	13:15	333.00	291.10
1:30	333.00	243.00	13:30	333.00	288.70
1:45	333.00	253.70	13:45	333.00	284.60
2:00	333.00	253.80	14:00	333.00	285.70
2:15	333.00	254.30	14:15	333.00	278.20
2:30	333.00	255.30	14:30	333.00	278.10
2:45	333.00	255.30	14:45	333.00	284.50
3:00	333.00	257.20	15:00	333.00	280.20
3:15	333.00	253.90	15:15	333.00	277.10
3:30	333.00	256.80	15:30	333.00	278.30
3:45	333.00	255.30	15:45	333.00	275.50
4:00	333.00	254.40	16:00	333.00	284.40
4:15	333.00	252.50	16:15	333.00	286.80
4:30	333.00	257.00	16:30	333.00	295.30
4:45	333.00	257.70	16:45	333.00	298.10
5:00	333.00	260.00	17:00	347.20	307.90
5:15	333.00	263.70	17:15	347.20	311.50
5:30	347.20	264.70	17:30	347.20	320.30
6:45	347.20	267.40	17:45	347.20	334.50
6:00	347.20	267.20	18:00	347.20	344.10
6:15	347.20	270.90	18:15	347.20	349.50
6:30	347.20	276.90	18:30	347.20	348.40
6:45	347.20	286.60	18:45	347.20	347.10
7:00	347.20	295.60	19:00	347.20	342.90
7:15	347.20	304.90	19:15	347.20	349.40
7:30	347.20	310.30	19:30	347.20	348.70
7:45	347.20	310.90	19:45	347.20	340.80
8:00	347.20	311.60	20:00	347.20	336.80
8:15	347.20	309.90	20:15	347.20	337.60
8:30	347.20	310.60	20:30	347.20	335.30
8:45	347.20	307.30	20:45	347.20	332.50
9:00	333.00	284.90	21:00	347.20	324.50
9:15	333.00	319.70	21:15	333.00	330.20
9:30	333.00	324.80	21:30	333.00	327.00
9:45	333.00	307.00	21:45	333.00	322.80
10:00	333.00	306.50	22:00	333.00	311.80
10:15	333.00	305.00	22:15	333.00	304.90
10:30	333.00	301.20	22:30	333.00	289.70
10:45	333.00	298.80	22:45	333.00	276.00
11:00	333.00	301.40	23:00	333.00	265.20
11:15	333.00	300.30	23:15	157.50	248.80
11:30	333.00	306.80	23:30	157.50	235.70
11:45	333.00	305.50	23:45	157.50	225.30

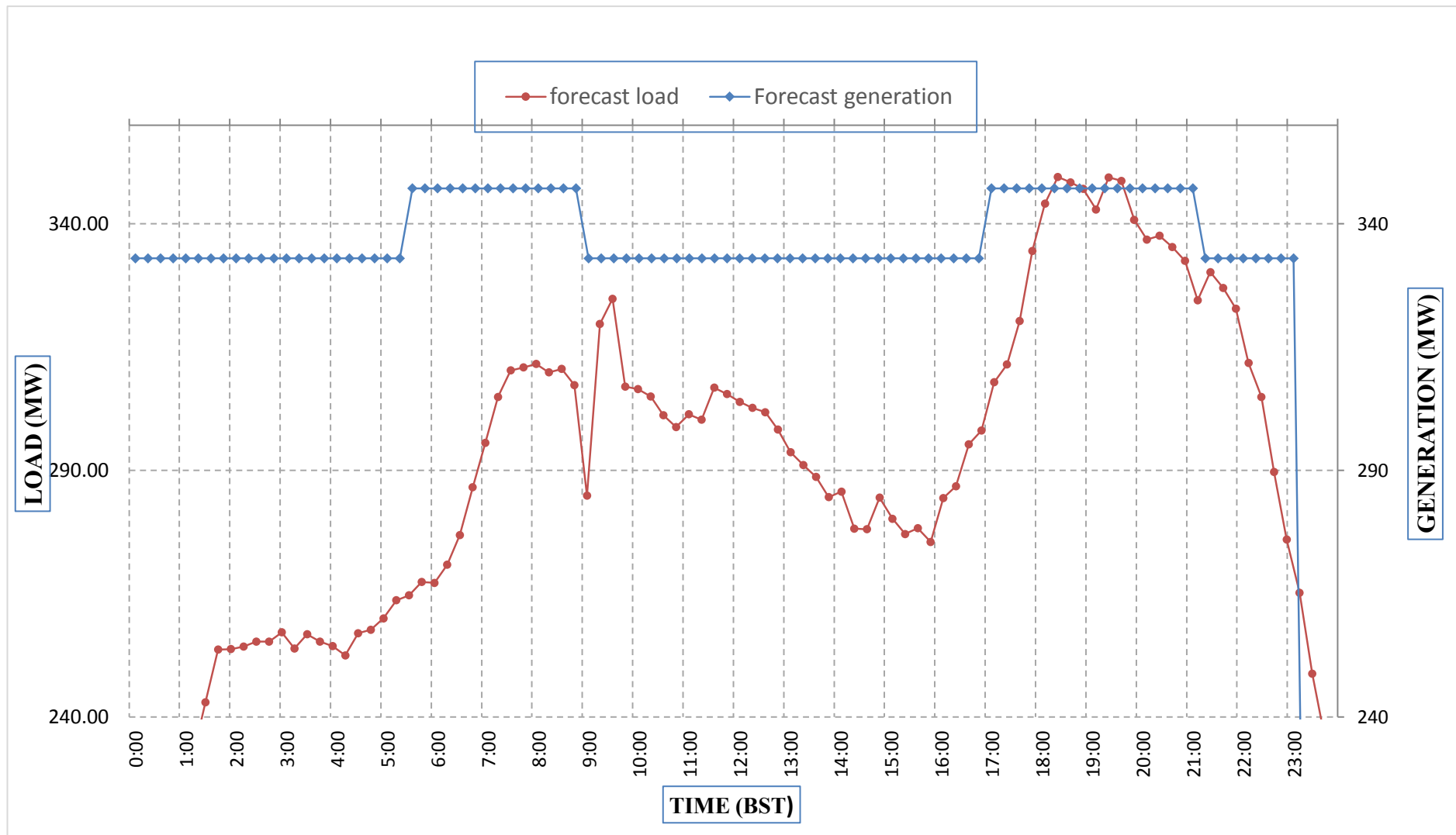
Yours faithfully,
 Phub Zam



Message No.: Enter your message number
 From: Shift In-charge, Control Room

Date: 14-Jan-18
 Time: 12:39

Forecast Generation & Load Forecast for Tomorrow (15-Jan-2018).



Yours faithfully,
 Phub zam

	MW
Scheduled Peak Generation(15-Jan-2018).	347.20
Forecast Peak Load(15-Jan-2018).	349.50



འབྲུག་རྒྱལ་ཁོག་གི་འགན་ཁུར་ལྷན་ཁག་།

Bhutan Power Corporation Ltd.
Bhutan Power System Operator
Thimphu: Bhutan



Message No.:

Enter your message number

Date: 14-Jan-18

From:

Shift In-charge, Control Room

Time: 12:39

To

Managing Director, BPC. Email: gemtshering@bpc.bt
Director, O&MD, DGPC. Email: director.umd@drukgreen.com
General Manager, TD, BPC. Email: ktobgye@bpc.bt
Advisor, BPC. Email: bharattamang@bpc.bt

Sub:

Forecast Generation and Actual Generation of Dagachhu (13-Jan-2018).

Hours (BST)	Actual Frequency	Forecast Generation	Actual Generation	Hours (BST)	Actual Frequency	Forecast Generation	Actual Generation
0:00	49.98	22.50	22.50	12:00	50.00	22.50	22.71
0:15	49.93	22.50	22.53	12:15	49.90	22.50	22.71
0:30	49.97	22.50	22.56	12:30	49.91	22.50	22.70
0:45	49.97	22.50	22.53	12:45	49.94	22.50	22.73
1:00	50.00	22.50	22.53	13:00	49.98	22.50	22.73
1:15	50.02	22.50	22.54	13:15	50.03	22.50	22.72
1:30	50.02	22.50	22.52	13:30	50.02	22.50	22.74
1:45	50.02	22.50	22.52	13:45	49.95	22.50	22.74
2:00	50.03	22.50	22.52	14:00	49.98	22.50	22.71
2:15	49.98	22.50	22.52	14:15	50.00	22.50	22.74
2:30	49.99	22.50	22.53	14:30	49.95	22.50	22.75
2:45	49.97	22.50	22.52	14:45	50.00	22.50	22.73
3:00	50.01	22.50	22.53	15:00	49.98	22.50	22.71
3:15	50.01	22.50	22.51	15:15	50.02	22.50	22.73
3:30	49.97	22.50	22.51	15:30	49.94	22.50	22.74
3:45	49.98	22.50	22.52	15:45	49.93	22.50	22.54
4:00	50.01	22.50	22.51	16:00	49.92	22.50	22.53
4:15	49.98	22.50	22.52	16:15	49.98	22.50	22.52
4:30	50.02	22.50	22.52	16:30	49.93	22.50	22.52
4:45	50.01	22.50	22.51	16:45	49.94	22.50	22.54
5:00	50.03	22.50	22.54	17:00	49.91	22.50	22.51
5:15	50.04	22.50	22.50	17:15	49.94	22.50	22.52
5:30	50.01	22.50	22.52	17:30	49.95	22.50	22.53
6:45	50.03	22.50	22.51	17:45	50.01	22.50	22.51
6:00	50.07	22.50	22.51	18:00	50.02	22.50	22.53
6:15	50.07	22.50	22.49	18:15	50.03	22.50	22.32
6:30	50.03	22.50	22.53	18:30	49.99	22.50	22.33
6:45	50.00	22.50	22.51	18:45	49.96	22.50	21.99
7:00	49.98	22.50	22.48	19:00	49.98	22.50	21.99
7:15	49.98	22.50	22.54	19:15	49.94	22.50	22.36
7:30	49.94	22.50	22.53	19:30	49.93	22.50	22.33
7:45	49.91	22.50	22.51	19:45	49.95	22.50	22.33
8:00	49.95	22.50	22.52	20:00	49.97	22.50	22.35
8:15	49.91	22.50	22.53	20:15	49.95	22.50	22.36
8:30	49.86	22.50	22.52	20:30	49.97	22.50	22.36
8:45	49.92	22.50	22.52	20:45	50.00	22.50	22.36
9:00	49.89	22.50	23.46	21:00	50.05	22.50	22.35
9:15	49.88	22.50	22.77	21:15	49.97	22.50	22.34
9:30	49.92	22.50	22.75	21:30	50.05	22.50	22.38
9:45	49.97	22.50	22.73	21:45	50.01	22.50	22.33
10:00	49.97	22.50	22.74	22:00	50.04	22.50	19.85
10:15	49.92	22.50	22.74	22:15	49.93	22.50	22.54
10:30	49.92	22.50	22.74	22:30	50.03	22.50	22.56
10:45	49.90	22.50	22.72	22:45	50.00	22.50	22.52
11:00	49.90	22.50	22.56	23:00	50.04	22.50	22.52
11:15	49.94	22.50	22.59	23:15	49.99	22.50	22.51
11:30	49.91	22.50	22.58	23:30	50.00	22.50	22.53
11:45	49.94	22.50	22.57	23:45	50.01	22.50	22.56

Note: Some data obtained from SCADA are missing

Yours faithfully,

Phub Zam



འབྲུག་གྲོག་ཚེ་ལས་འཛིན།

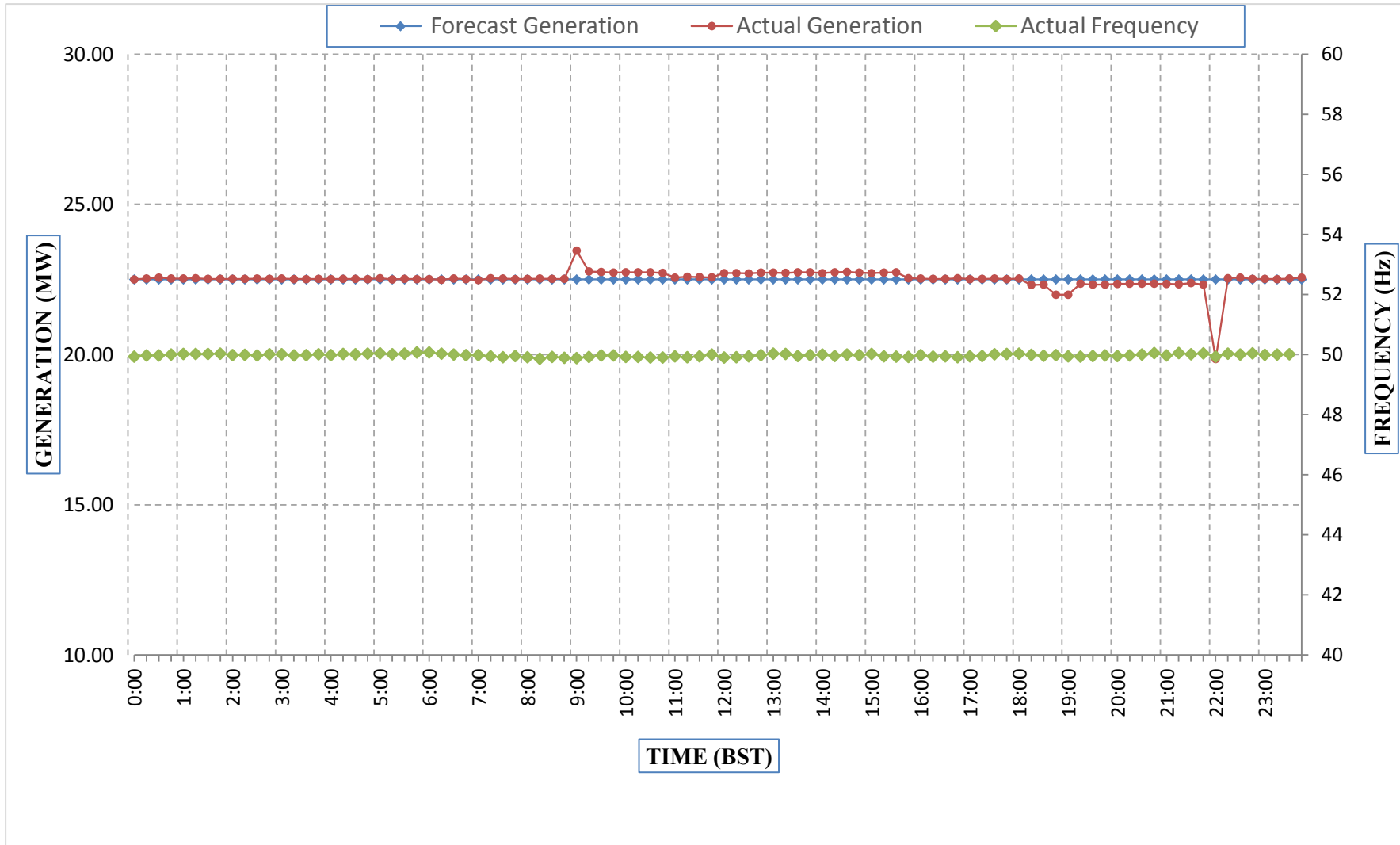
Bhutan Power Corporation Ltd.
Bhutan Power System Operator
Thimphu: Bhutan



Message No.: Enter your message number
From: Shift In-charge, Control Room

Date: 14-Jan-18
Time: 12:39

Forecast Generation & Actual Generation of Dagachhu(13-Jan-2018).



Yours faithfully,
Phub Zam