



འབྲུག་གླིང་མེ་ལམ་འཛིན།

Bhutan Power Corporation Ltd.
Bhutan Power System Operator
Thimphu: Bhutan



Message No.: Enter your message number
From: Shift In-charge, Control Room

Date: 13-Jan-18
Time: 9:13

To
Managing Director, BPC. Email: gemtshering@bpc.bt
Director, O&MD, DGPC. Email: director.omid@drukgreen.com
General Manager, TD, BPC. Email: ktobgye@bpc.bt
General Manager, DCSD, BPC. Email: sandeeprai@bpc.bt

Sub: **Load Generation Balance Report of Yesterday (12-Jan-2018).**

Hours (BST)	Forecast		Actual		Hours (BST)	Forecast		Actual	
	Generation	Load	Generation	Load		Generation	Load	Generation	Load
0:00	282.80	262.80	328.40	260.99	12:00	316.50	296.80	328.88	315.66
0:15	277.10	257.10	329.13	259.69	12:15	316.00	296.00	330.26	312.66
0:30	277.20	257.20	327.37	258.08	12:30	314.80	294.80	331.20	315.44
0:45	271.80	251.80	329.78	261.16	12:45	313.90	293.90	329.93	307.08
1:00	272.70	252.70	327.03	265.50	13:00	307.50	287.50	329.59	303.59
1:15	270.00	250.00	328.15	253.07	13:15	306.90	286.90	329.02	302.93
1:30	271.80	251.80	328.50	257.56	13:30	300.20	280.20	329.42	290.78
1:45	274.20	254.20	328.40	256.92	13:45	298.90	278.90	329.82	292.93
2:00	275.00	255.00	327.24	260.61	14:00	305.70	285.70	328.05	292.38
2:15	275.60	255.60	328.99	265.38	14:15	287.80	267.80	332.17	284.01
2:30	275.90	255.90	327.85	266.63	14:30	289.10	269.10	332.66	287.88
2:45	273.70	253.70	327.89	267.58	14:45	298.50	278.50	333.82	283.49
3:00	273.40	253.40	329.13	267.72	15:00	295.20	275.20	333.98	280.33
3:15	270.40	250.40	327.95	265.94	15:15	285.70	265.70	336.57	280.41
3:30	274.20	254.20	329.56	267.05	15:30	285.30	265.30	336.97	279.26
3:45	272.50	252.50	329.58	265.48	15:45	288.40	268.40	336.45	280.77
4:00	270.20	250.20	327.96	266.10	16:00	300.10	280.10	337.05	284.02
4:15	270.20	250.20	327.73	264.55	16:15	305.30	285.30	339.91	284.02
4:30	273.70	253.70	326.92	268.51	16:30	293.30	293.30	337.17	293.30
4:45	274.80	254.80	327.02	265.09	16:45	294.80	294.80	337.09	301.42
5:00	275.60	255.60	327.17	272.33	17:00	304.60	304.60	350.27	302.46
5:15	281.20	261.20	328.77	273.14	17:15	305.40	305.40	363.95	314.73
5:30	284.30	264.30	326.08	269.91	17:30	312.60	312.60	363.14	323.41
5:45	284.70	264.70	329.77	272.11	17:45	323.50	327.30	360.56	331.18
6:00	284.30	264.30	327.21	273.69	18:00	323.50	342.20	359.49	341.29
6:15	289.00	269.00	326.64	269.01	18:15	348.30	348.30	361.75	343.41
6:30	296.00	276.00	328.63	274.85	18:30	347.30	347.30	363.70	344.05
6:45	300.30	280.30	329.28	287.02	18:45	343.90	343.90	360.75	344.23
7:00	312.60	292.60	342.74	295.13	19:00	344.50	344.50	362.93	330.37
7:15	321.70	301.70	342.39	307.27	19:15	358.10	358.10	364.38	332.66
7:30	324.40	307.30	342.55	312.56	19:30	361.60	361.60	362.61	336.52
7:45	324.40	310.80	340.69	310.64	19:45	323.50	352.90	361.13	331.15
8:00	331.10	311.10	341.95	314.07	20:00	323.50	339.20	361.25	328.63
8:15	330.40	310.40	342.04	311.95	20:15	323.50	329.70	381.43	321.45
8:30	330.00	310.00	342.57	304.94	20:30	295.30	295.30	382.70	323.95
8:45	327.10	307.10	342.89	294.14	20:45	303.00	278.00	382.25	320.64
9:00	324.40	304.40	342.28	296.38	21:00	303.00	278.00	380.54	312.35
9:15	318.20	298.20	343.52	291.78	21:15	310.90	285.90	367.55	315.06
9:30	316.50	333.60	342.76	308.17	21:30	293.60	293.60	369.73	308.65
9:45	316.50	303.80	341.33	311.31	21:45	303.50	303.50	367.14	305.52
10:00	316.50	300.50	338.77	303.18	22:00	299.90	299.90	369.04	294.61
10:15	316.50	297.70	338.30	312.77	22:15	298.60	298.60	368.78	291.69
10:30	316.50	298.70	326.23	306.72	22:30	293.80	293.80	368.52	291.55
10:45	316.50	298.00	328.42	306.44	22:45	306.30	281.30	369.45	287.51
11:00	316.00	296.00	328.23	311.02	23:00	303.30	278.30	366.81	279.16
11:15	315.90	295.90	328.72	312.77	23:15	295.50	270.50	369.94	255.61
11:30	316.50	297.50	326.68	317.37	23:30	292.10	267.10	368.02	270.27
11:45	314.50	294.50	329.69	321.07	23:45	289.70	264.70	366.65	265.45

Yours faithfully
Tshering Choden

Coincidental peak load of Day(Last year):	
279.13	12-Jan-17
Maximum Load till date:	
362.09MW	14-Nov-17



འབྲུག་རྒྱལ་ཁོ་ལས་འཛིན།

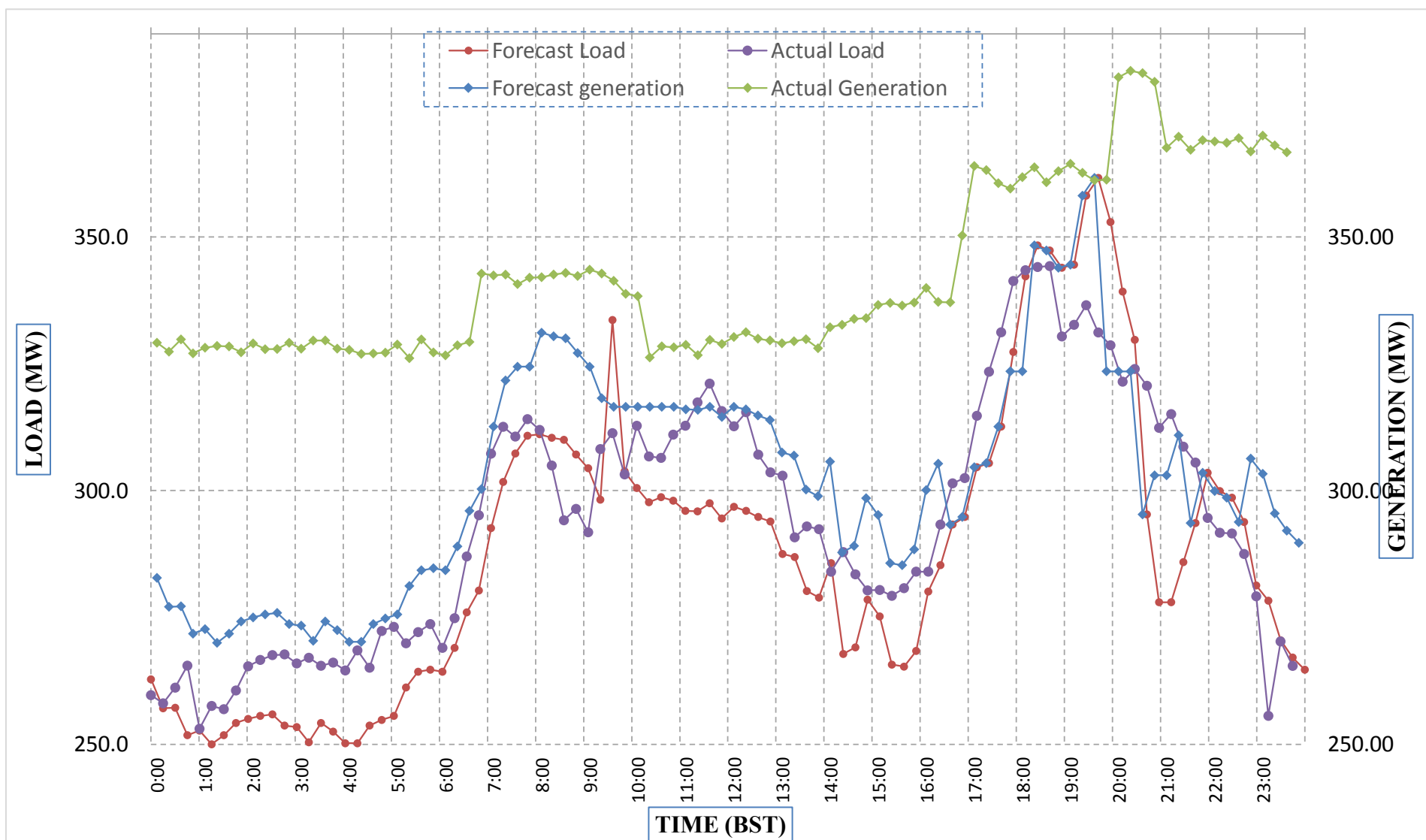
Bhutan Power Corporation Ltd.
 Bhutan Power System Operator
 Thimphu: Bhutan



Message No.: Enter your message number
 From: Shift In-charge, Control Room

Date: 13-Jan-18
 Time: 9:13

Forecast Generation & Load with Actual Generation & Load (12-Jan-2018).



Yours faithfully,
 Tshering Choden

	MW	Coincidental peak load of Day(Last year):	
Peak Co-incident Generation(12-Jan-2018).	382.70	279.13	12-Jan-17
Peak Co-incident Load(12-Jan-2018).	344.23		
		Maximum Load till date:	
		362.09MW	14-Nov-17

Telephone: +975-02335631; Fax: +975-02335632; Email: bhutansystemoperator@bpc.bt; www.bpc.bt



འབྲུག་གློག་ལེ་ལས་འཛིན།

Bhutan Power Corporation Ltd.
Bhutan Power System Operator
Thimphu: Bhutan



Message No.: Enter your message number
From: Shift In-charge, Control Room

Date: 13-Jan-18
Time: 9:13

To
Managing Director, BPC. Email: gemtshering@bpc.bt
Director, O&MD, DGPC. Email: director.umd@drukgreen.com
General Manager, TD, BPC. Email: thinleygyeltshen@bpc.bt
General Manager, DCSD, BPC. Email: sandeeprai@bpc.bt

Sub: Load Generation Balance Report of Today (13-Jan-2018).

Hours (BST)	Forecast		Actual	
	Generation	Load	Generation	Load
0:00	320.90	260.00	365.23	266.07
0:15	320.90	255.10	367.27	266.74
0:30	320.90	254.30	368.56	269.09
0:45	320.90	249.80	367.88	266.10
1:00	320.90	250.10	365.85	265.27
1:15	320.90	247.70	368.12	260.20
1:30	320.90	248.20	367.84	254.21
1:45	320.90	250.80	368.56	252.92
2:00	320.90	250.80	367.21	251.05
2:15	320.90	252.50	366.17	249.44
2:30	320.90	252.90	365.12	233.50
2:45	320.90	250.30	365.70	237.75
3:00	320.90	251.20	365.37	242.29
3:15	320.90	248.40	356.63	251.71
3:30	320.90	252.00	357.58	248.54
3:45	320.90	251.10	357.04	253.27
4:00	320.90	248.40	358.54	249.75
4:15	320.90	248.90	354.67	252.35
4:30	320.90	252.30	353.33	255.96
4:45	320.90	253.40	352.41	258.05
5:00	320.90	254.70	355.09	262.45
5:15	320.90	259.90	352.19	259.81
5:30	320.90	262.30	347.48	263.98
5:45	320.90	262.80	361.28	265.20
6:00	334.90	263.40	360.27	269.29
6:15	334.90	267.70	346.45	277.09
6:30	334.90	275.40	357.02	278.45
6:45	334.90	280.00	357.43	279.46
7:00	334.90	292.90	360.53	283.46
7:15	334.90	301.50	338.35	296.94
7:30	334.90	307.10	340.12	303.87
7:45	334.90	311.40	337.07	315.38
8:00	334.90	311.90	336.95	309.20
8:15	334.90	311.10	335.11	305.70
8:30	334.90	311.10	338.19	311.04
8:45	334.90	309.70	335.77	310.31
9:00	334.90	307.00	337.77	314.91

Coincidental peak load of Day(Last year):	
281.17	13-Jan-17

Maximum Load till date:	
362.09MW	14-Nov-17

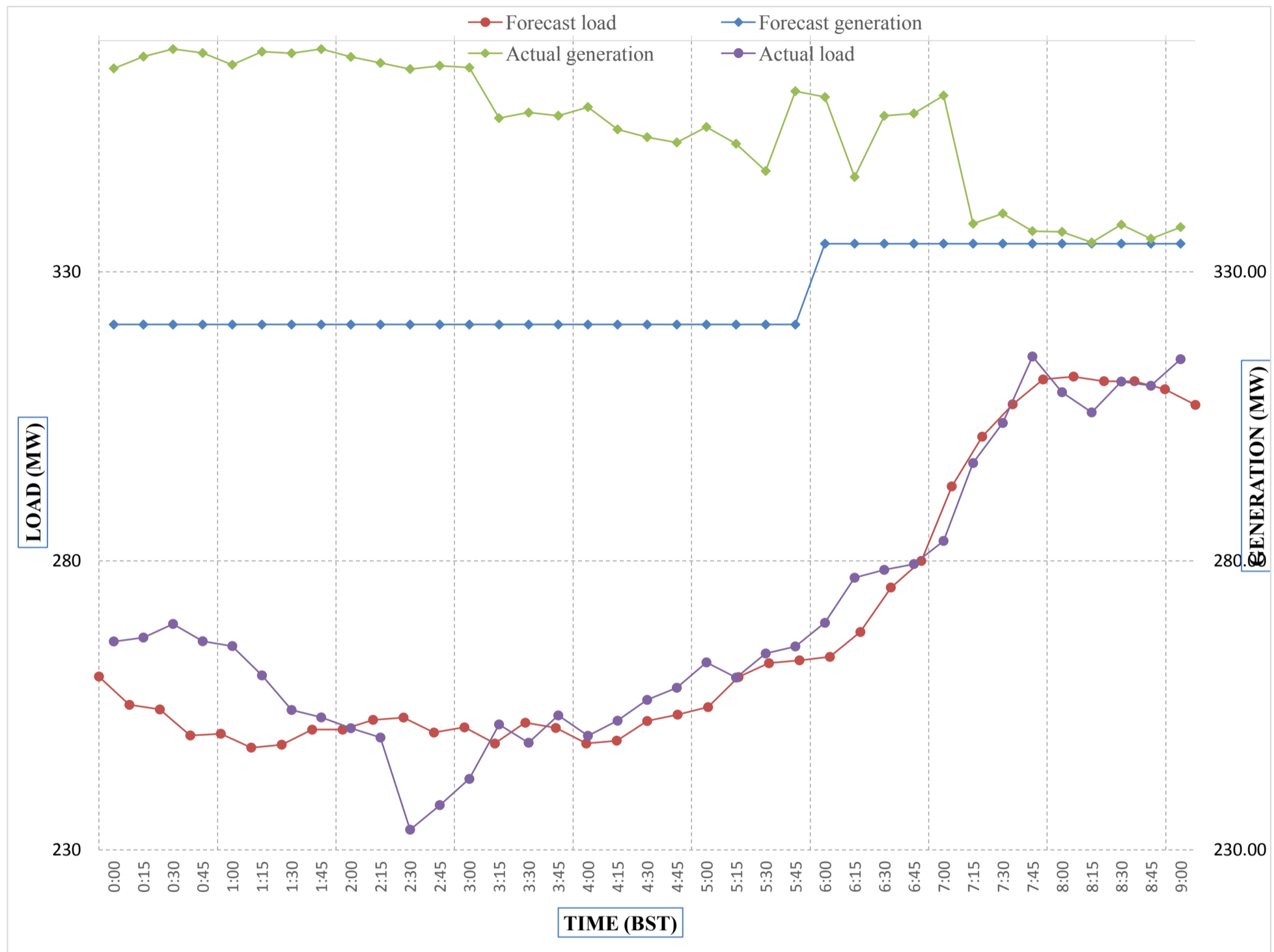
Yours faithfully,
Tshering Choden



Message No.: Enter your message number
 From: Shift In-charge, Control Room

Date: 13-Jan-18
 Time: 9:13

Forecast Generation & Load with Actual Generation & Load of Today from 00:00hrs to 09:00hrs(13-Jan-2018).



Yours faithfully Tshering Choden



འབྲུག་རྒྱལ་ཁོག་གི་འགྲུལ་རྒྱུ་ལས་ཁུངས་ལ.ལ.
Bhutan Power Corporation Ltd.
Bhutan Power System Operator
Thimphu: Bhutan



Message No.: Enter your message number **Date:** 13-Jan-18
From: Shift In-charge, Control Room **Time:** 9:13

To
 Managing Director, BPC. Email: gemtshering@bpc.bt
 Director, O&MD, DGPC. Email: director.umd@drukgreen.com
 General Manager, TD, BPC. Email: ktobgye@bpc.bt
 Advisor, BPC. Email: bharattamang@bpc.bt

Sub: **Load Generation Balance Report of Tomorrow (14-Jan-2018).**

Hours (BST)	Forecast		Hours (BST)	Forecast	
	Generation	Load		Generation	Load
0:00	262.70	279.70	12:00	302.20	319.20
0:15	259.50	276.50	12:15	301.70	318.70
0:30	265.60	282.60	12:30	299.50	316.50
0:45	262.70	279.70	12:45	295.90	312.90
1:00	266.00	283.00	13:00	291.80	308.80
1:15	262.60	279.60	13:15	290.30	307.30
1:30	264.10	281.10	13:30	286.80	303.80
1:45	267.40	284.40	13:45	281.60	298.60
2:00	264.60	281.60	14:00	287.30	304.30
2:15	266.60	283.60	14:15	276.30	293.30
2:30	262.90	279.90	14:30	274.80	291.80
2:45	260.20	277.20	14:45	281.70	298.70
3:00	261.20	278.20	15:00	276.90	293.90
3:15	254.20	271.20	15:15	278.10	295.10
3:30	256.90	273.90	15:30	278.90	295.90
3:45	255.50	272.50	15:45	280.10	297.10
4:00	254.60	271.60	16:00	284.70	301.70
4:15	254.90	271.90	16:15	285.40	302.40
4:30	257.60	274.60	16:30	295.30	312.30
4:45	258.90	275.90	16:45	296.00	313.00
5:00	260.90	277.90	17:00	306.00	323.00
5:15	265.50	282.50	17:15	308.50	325.50
5:30	265.10	282.10	17:30	317.90	334.90
6:45	265.30	282.30	17:45	328.70	345.70
6:00	266.40	283.40	18:00	342.20	359.20
6:15	269.00	286.00	18:15	347.50	364.50
6:30	276.30	293.30	18:30	347.80	364.80
6:45	281.90	298.90	18:45	344.30	361.30
7:00	292.80	309.80	19:00	339.90	356.90
7:15	302.80	319.80	19:15	348.90	352.90
7:30	306.20	323.20	19:30	350.90	352.90
7:45	310.50	327.50	19:45	341.30	352.90
8:00	311.80	328.80	20:00	338.50	352.90
8:15	310.00	327.00	20:15	340.80	352.90
8:30	308.90	325.90	20:30	338.60	352.90
8:45	305.20	322.20	20:45	335.70	352.70
9:00	304.40	321.40	21:00	335.20	352.20
9:15	255.10	272.10	21:15	336.20	337.30
9:30	324.80	337.30	21:30	327.10	337.30
9:45	307.40	324.40	21:45	314.70	331.70
10:00	304.10	321.10	22:00	300.10	317.10
10:15	301.60	318.60	22:15	267.50	284.50
10:30	303.30	320.30	22:30	244.30	261.30
10:45	303.70	320.70	22:45	230.30	247.30
11:00	301.20	318.20	23:00	219.20	236.20
11:15	300.60	317.60	23:15	213.20	230.20
11:30	304.00	321.00	23:30	213.90	230.90
11:45	302.70	319.70	23:45	215.30	232.30

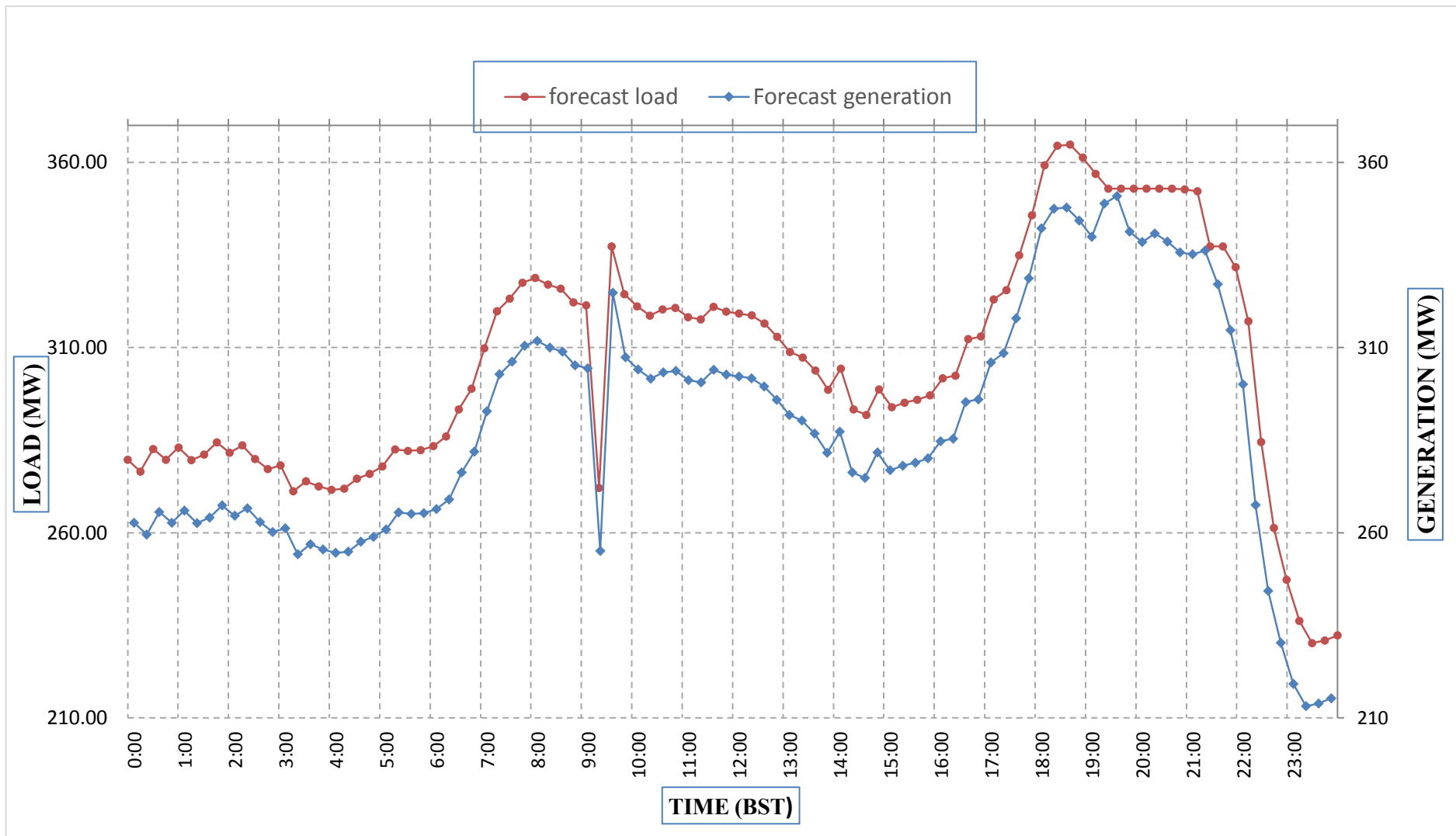
Yours faithfully,
 Tshering Choden



Message No.: Enter your message number
 From: Shift In-charge, Control Room

Date: 13-Jan-18
 Time: 9:13

Forecast Generation & Load Forecast for Tomorrow (14-Jan-2018).



Yours faithfully,
 Tshering Choden

	MW
Scheduled Peak Generation(14-Jan-2018).	350.90
Forecast Peak Load(14-Jan-2018).	364.80



འབྲུག་རྒྱལ་ཁོ་ལས་འཛིན།

Bhutan Power Corporation Ltd.
 Bhutan Power System Operator
 Thimphu: Bhutan



Message No.:

Enter your message number

Date: 13-Jan-18

From:

Shift In-charge, Control Room

Time: 9:13

To

Managing Director, BPC. Email: gemtshering@bpc.bt
 Director, O&MD, DGPC. Email: director.umd@drukgreen.com
 General Manager, TD, BPC. Email: ktobgye@bpc.bt
 Advisor, BPC. Email: bharattamang@bpc.bt

Sub:

Forecast Generation and Actual Generation of Dagachhu (12-Jan-2018).

Hours (BST)	Actual Frequency	Forecast Generation	Actual Generation	Hours (BST)	Actual Frequency	Forecast Generation	Actual Generation
0:00	49.94	22.80	22.55	12:00	49.91	22.80	22.85
0:15	49.98	22.80	22.53	12:15	49.90	22.80	22.84
0:30	49.98	22.80	22.54	12:30	49.92	22.80	22.83
0:45	49.99	22.80	22.53	12:45	50.00	22.80	22.85
1:00	50.00	22.80	22.54	13:00	49.99	22.80	22.84
1:15	50.02	22.80	22.54	13:15	49.92	22.80	22.83
1:30	49.97	22.80	22.54	13:30	49.98	22.80	22.84
1:45	50.00	22.80	22.53	13:45	50.02	22.80	22.86
2:00	50.00	22.80	22.54	14:00	49.98	22.80	22.85
2:15	49.97	22.80	22.54	14:15	49.92	22.80	22.83
2:30	49.96	22.80	22.55	14:30	49.94	22.80	22.86
2:45	50.00	22.80	22.57	14:45	49.93	22.80	22.88
3:00	49.98	22.80	22.54	15:00	49.91	22.80	22.83
3:15	50.00	22.80	22.54	15:15	49.98	22.80	22.85
3:30	50.02	22.80	22.56	15:30	49.97	22.80	22.83
3:45	50.00	22.80	22.52	15:45	49.94	22.80	22.84
4:00	49.99	22.80	22.56	16:00	50.03	22.80	22.85
4:15	50.00	22.80	22.57	16:15	49.92	22.80	22.84
4:30	49.98	22.80	22.53	16:30	49.93	22.80	22.86
4:45	50.02	22.80	22.54	16:45	49.99	22.80	22.85
5:00	49.95	22.80	22.55	17:00	49.97	22.80	22.86
5:15	49.95	22.80	22.64	17:15	49.96	22.80	22.85
5:30	49.94	22.80	22.64	17:30	49.93	22.80	22.86
6:45	50.02	22.80	22.67	17:45	49.98	22.80	22.84
6:00	50.01	22.80	22.64	18:00	49.96	22.80	22.50
6:15	49.93	22.80	22.63	18:15	49.91	22.80	22.51
6:30	49.97	22.80	22.81	18:30	49.93	22.80	22.51
6:45	49.94	22.80	22.84	18:45	49.95	22.80	22.51
7:00	49.94	22.80	22.82	19:00	49.93	22.80	22.50
7:15	49.90	22.80	22.94	19:15	49.96	22.80	22.51
7:30	49.84	22.80	22.93	19:30	49.96	22.80	22.51
7:45	49.96	22.80	22.94	19:45	49.92	22.80	22.50
8:00	49.96	22.80	22.94	20:00	49.94	22.80	22.52
8:15	49.98	22.80	22.95	20:15	49.91	22.80	22.51
8:30	49.98	22.80	22.95	20:30	49.96	22.80	22.52
8:45	49.89	22.80	22.84	20:45	49.98	22.80	22.52
9:00	49.86	22.80	22.83	21:00	49.97	22.80	22.50
9:15	49.91	22.80	22.83	21:15	49.88	22.80	22.50
9:30	49.90	22.80	22.85	21:30	49.97	22.80	22.52
9:45	49.97	22.80	22.82	21:45	50.04	22.80	22.55
10:00	49.96	22.80	22.84	22:00	49.88	22.80	22.49
10:15	49.94	22.80	22.84	22:15	49.96	22.80	22.53
10:30	49.96	22.80	22.86	22:30	49.93	22.80	22.52
10:45	49.93	22.80	22.83	22:45	49.94	22.80	22.53
11:00	49.93	22.80	22.86	23:00	49.94	22.80	22.52
11:15	49.94	22.80	22.84	23:15	49.96	22.80	22.52
11:30	49.98	22.80	22.84	23:30	49.94	22.80	22.53
11:45	50.01	22.80	22.82	23:45	49.96	22.80	22.52

Yours faithfully,
 Tshering Choden



འབྲུག་རྒྱལ་ཁོ་ལས་འཛིན།

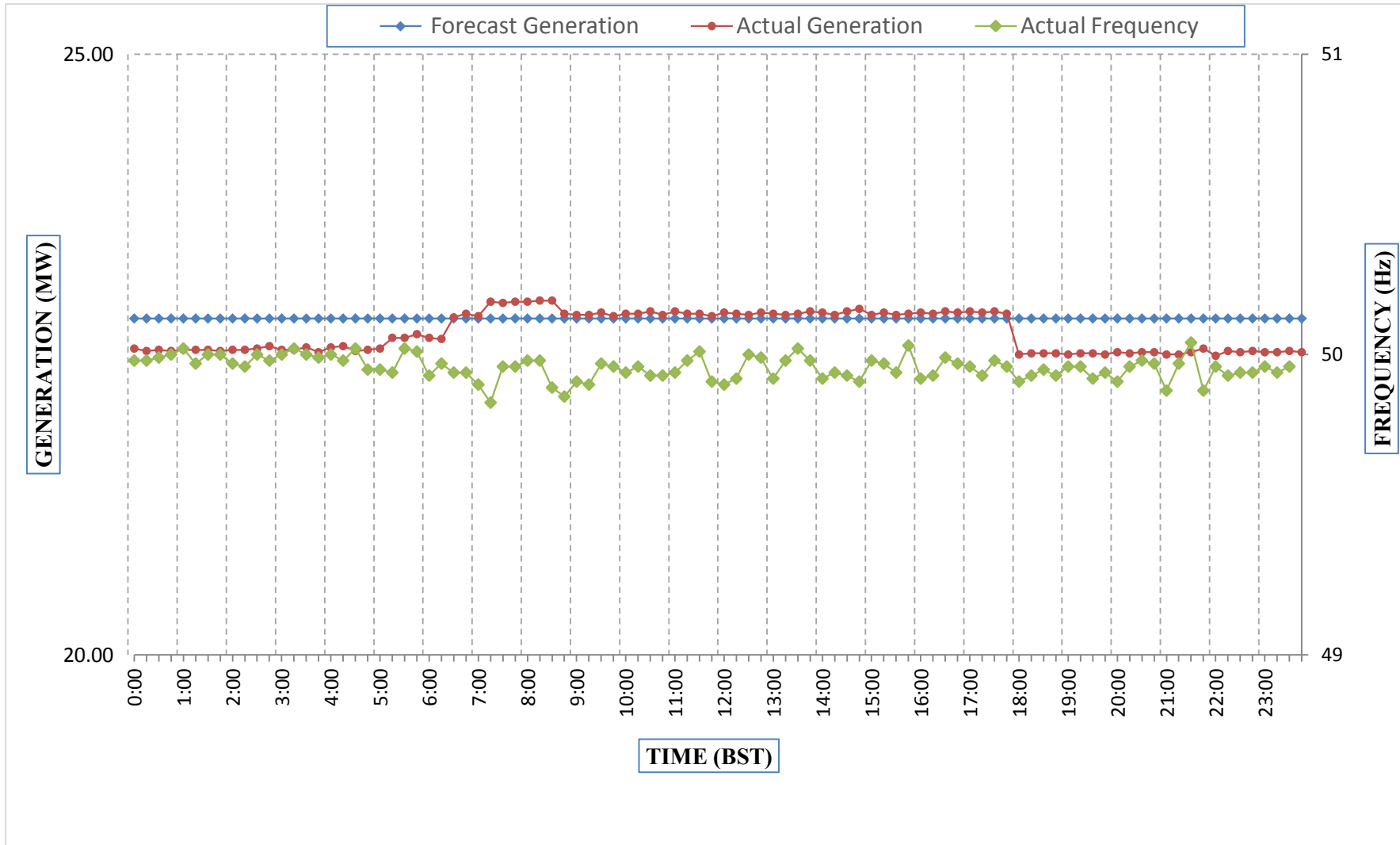
Bhutan Power Corporation Ltd.
Bhutan Power System Operator
Thimphu: Bhutan



Message No.: Enter your message number
From: Shift In-charge, Control Room

Date: 13-Jan-18
Time: 9:13

Forecast Generation & Actual Generation of Dagachhu(12-Jan-2018).



Yours faithfully,
Tshering Choden