



འབྲུག་གླིང་གི་ལམ་འཛིན།

Bhutan Power Corporation Ltd.
Bhutan Power System Operator
Thimphu: Bhutan



Message No.: Enter your message number
From: Shift In-charge, Control Room

Date: 11-Jan-18
Time: 9:48

To
Managing Director, BPC. Email: gemtshering@bpc.bt
Director, O&MD, DGPC. Email: director.umd@drukgreen.com
General Manager, TD, BPC. Email: ktobgye@bpc.bt
General Manager, DCSD, BPC. Email: sandeeprai@bpc.bt

Sub: **Load Generation Balance Report of Yesterday (10-Jan-2018).**

Hours (BST)	Forecast		Actual		Hours (BST)	Forecast		Actual	
	Generation	Load	Generation	Load		Generation	Load	Generation	Load
0:00	265.1	299.6	259.046875	330.703125	12:00	293.4	299.6	296.58	316.32
0:15	258	299.6	256.3	340.9	12:15	294.1	299.6	299.11	316.30
0:30	256.1	299.6	254.8	339.1	12:30	292	299.6	291.02	316.89
0:45	252.8	299.6	244.4	339.0	12:45	289.9	299.6	290.88	315.79
1:00	253.9	299.6	238.2	339.0	13:00	285.6	299.6	284.33	316.14
1:15	248.7	299.6	245.0	338.9	13:15	284.9	299.6	285.73	318.71
1:30	251	299.6	248.7	339.6	13:30	284.4	299.6	269.39	318.82
1:45	253	299.6	248.4	339.1	13:45	276.7	299.6	259.75	319.90
2:00	252.8	299.6	250.8	338.4	14:00	286.4	299.6	280.43	319.99
2:15	253.8	299.6	249.7	337.2	14:15	285.1	299.6	218.21	248.69
2:30	253.9	299.6	252.3	332.9	14:30	286.9	299.6	218.85	249.54
2:45	251.4	299.6	253.0	332.0	14:45	283.1	299.6	276.43	249.50
3:00	252.9	299.6	253.6	332.2	15:00	278.1	299.6	278.59	264.79
3:15	251	299.6	250.6	332.4	15:15	279.8	299.6	279.57	270.63
3:30	253.4	299.6	251.7	332.5	15:30	279	299.6	276.02	270.10
3:45	252	299.6	250.4	332.8	15:45	283.4	299.6	281.95	269.93
4:00	250.1	299.6	253.6	332.9	16:00	286.8	299.6	286.51	327.55
4:15	249.4	299.6	250.3	333.1	16:15	286.7	299.6	285.84	337.30
4:30	253.6	299.6	246.3	333.5	16:30	294.1	299.6	293.85	342.04
4:45	255.7	299.6	254.0	333.6	16:45	295.6	299.6	297.30	341.34
5:00	258.9	299.6	260.3	332.8	17:00	302	299.6	308.43	342.02
5:15	262.9	299.6	260.0	333.1	17:15	304.6	314.1	310.66	346.35
5:30	264.2	299.6	263.1	332.5	17:30	313.7	314.1	304.94	344.88
5:45	263.3	299.6	259.3	333.2	17:45	323.1	314.1	331.95	343.72
6:00	265	299.6	265.4	332.5	18:00	342.8	314.1	338.15	342.14
6:15	267.8	314.1	265.4	331.8	18:15	349.9	314.1	343.00	342.17
6:30	275.6	314.1	265.8	345.0	18:30	347.9	314.1	340.43	340.23
6:45	277.4	314.1	277.8	345.4	18:45	344.1	314.1	342.30	341.23
7:00	290.4	314.1	283.4	345.5	19:00	350.5	314.1	328.45	341.14
7:15	300.1	314.1	295.0	346.2	19:15	371.8	314.1	331.95	362.64
7:30	305.5	314.1	303.8	347.5	19:30	376	314.1	325.43	363.37
7:45	308.3	314.1	312.1	346.2	19:45	363.5	314.1	325.00	363.24
8:00	308.2	314.1	313.0	346.5	20:00	345.8	314.1	318.16	364.40
8:15	308.4	314.1	309.4	344.1	20:15	325.5	314.1	324.51	364.80
8:30	309.9	314.1	307.3	344.2	20:30	286.5	314.1	317.17	363.97
8:45	309	314.1	305.3	336.7	20:45	257.3	314.1	315.45	364.08
9:00	304.3	314.1	304.1	333.3	21:00	263	314.1	304.45	363.41
9:15	280.8	299.6	305.6	333.6	21:15	275	299.6	309.50	358.80
9:30	322	299.6	304.13	332.96	21:30	288.4	299.6	304.87	356.98
9:45	300.2	299.6	305.22	332.23	21:45	302.9	299.6	298.51	359.17
10:00	297.6	299.6	305.55	332.09	22:00	297.2	299.6	291.04	358.49
10:15	296	299.6	290.89	326.87	22:15	300.8	299.6	285.82	358.09
10:30	294.6	299.6	297.09	313.39	22:30	296.8	299.6	274.44	358.41
10:45	294.3	299.6	304.08	313.71	22:45	285.4	299.6	268.93	358.27
11:00	291.2	299.6	301.40	313.35	23:00	283.8	299.6	267.41	358.94
11:15	293.8	299.6	303.57	313.84	23:15	276.4	299.6	265.98	357.34
11:30	295.2	299.6	301.83	315.55	23:30	271.7	299.6	252.55	357.27
11:45	290.6	299.6	299.91	316.12	23:45	269.2	299.6	253.02	356.95

Yours faithfully
Phub Zam

Coincidental peak load of Day(Last year):	
269.83MW	10-Jan-17
Maximum Load till date:	
362.09MW	14-Nov-17



འབྲུག་རྒྱལ་ཁོ་ལས་འཛིན།

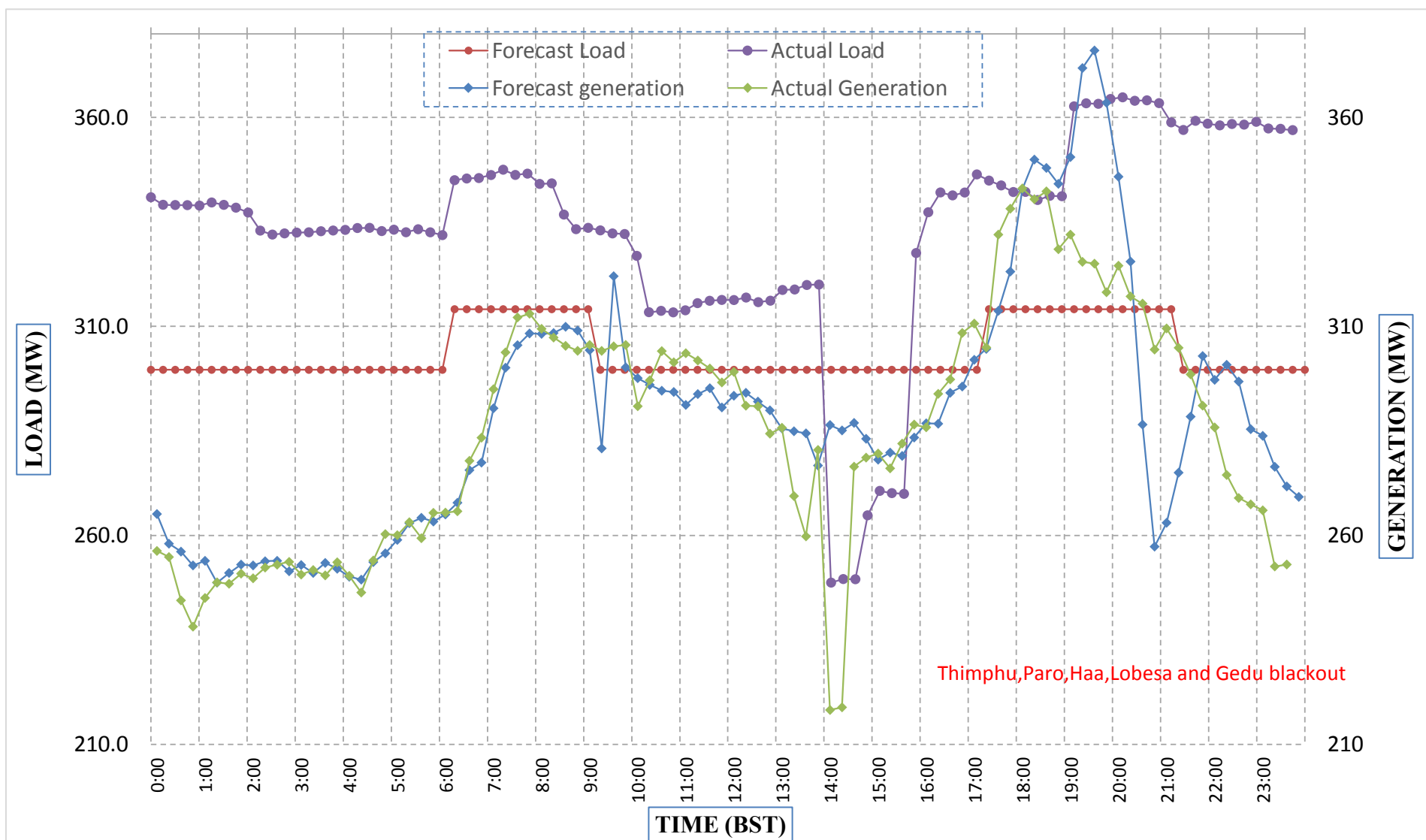
Bhutan Power Corporation Ltd.
 Bhutan Power System Operator
 Thimphu: Bhutan



Message No.: Enter your message number
 From: Shift In-charge, Control Room

Date: 11-Jan-18
 Time: 9:48

Forecast Generation & Load with Actual Generation & Load (10-Jan-2018).



Thimphu, Paro, Haa, Lobesa and Gedu blackout

Yours faithfully,

Phub Zam

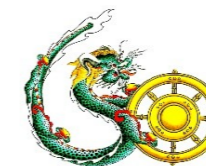
	MW	Coincidental peak load of Day (Last year):	
Peak Co-incident Generation (10-Jan-2018).	343.00	269.83MW	10-Jan-17
Peak Co-incident Load (10-Jan-2018).	364.80	Maximum Load till date:	
		362.09MW	14-Nov-17

Telephone: +975-02335631; Fax: +975-02335632; Email: bhutansystemoperator@bpc.bt; www.bpc.bt



འབྲུག་གློག་ལེ་ལས་འཛིན།

Bhutan Power Corporation Ltd.
Bhutan Power System Operator
Thimphu: Bhutan



Message No.: Enter your message number
From: Shift In-charge, Control Room

Date: 11-Jan-18
Time: 9:48

To
Managing Director, BPC. Email: gemtshering@bpc.bt
Director, O&MD, DGPC. Email: director.omid@drukgreen.com
General Manager, TD, BPC. Email: thinleygyeltshen@bpc.bt
General Manager, DCSD, BPC. Email: sandeeprai@bpc.bt

Sub: Load Generation Balance Report of Today (11-Jan-2018).

Hours (BST)	Forecast		Actual	
	Generation	Load	Generation	Load
0:00	265	285	250.0	356.9
0:15	259.7	279.7	245.6	356.1
0:30	258.8	278.8	246.4	355.4
0:45	254.3	274.3	242.6	355.1
1:00	257.4	277.4	241.0	355.1
1:15	251.9	271.9	239.8	353.8
1:30	253	273	238.1	352.4
1:45	256.4	276.4	238.8	353.4
2:00	257.4	277.4	237.4	352.2
2:15	257.5	277.5	240.6	349.6
2:30	257.2	277.2	242.8	349.1
2:45	254.4	274.4	244.0	349.3
3:00	253.7	273.7	244.2	348.8
3:15	252	272	241.9	349.8
3:30	255.6	275.6	245.0	348.4
3:45	252.7	272.7	248.1	349.0
4:00	249.7	269.7	248.4	348.6
4:15	249.8	269.8	244.7	348.4
4:30	254.2	274.2	245.3	349.1
4:45	255.7	275.7	249.5	348.6
5:00	254.9	274.9	250.8	349.3
5:15	261.6	281.6	256.0	349.3
5:30	265.6	285.6	256.9	348.6
5:45	265.3	285.3	257.3	348.9
6:00	265	285	261.8	363.0
6:15	269.2	289.2	269.9	363.6
6:30	279	299	276.3	362.9
6:45	280.1	300.1	284.1	362.7
7:00	294.9	314.9	293.7	362.7
7:15	303.1	323.1	302.2	362.4
7:30	307.5	327.5	311.0	362.6
7:45	310	330	313.5	362.5
8:00	310.5	330.5	318.2	362.2
8:15	310.6	330.6	320.8	362.2
8:30	310.9	330.9	318.1	362.4
8:45	307.4	327.4	319.7	362.0
9:00	304.7	324.7	316.6	361.8

Coincidental peak load of Day(Last year):	
268.18MW	11-Jan-18
Maximum Load till date:	
362.09MW	14-Nov-17

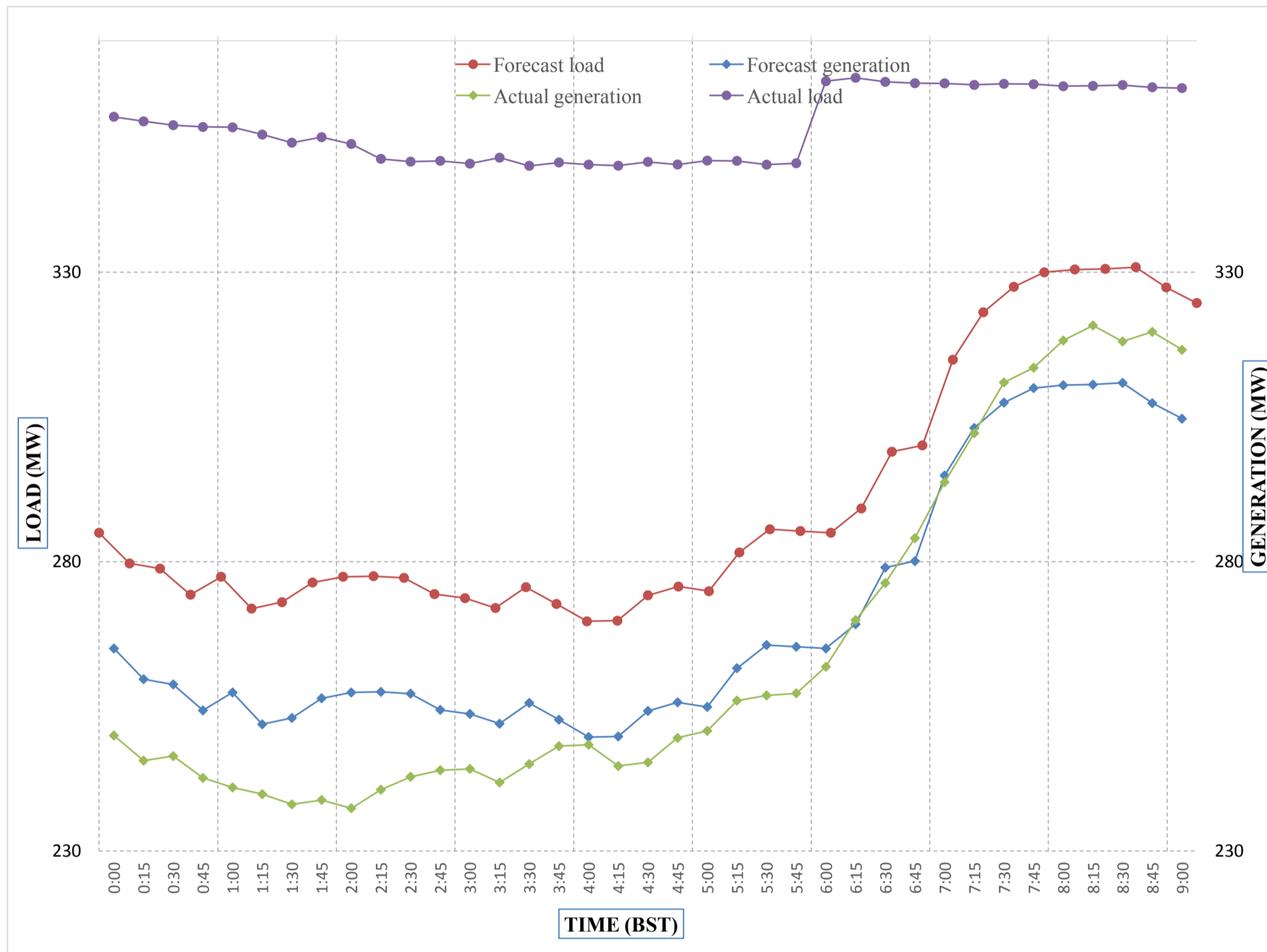
Yours faithfully,
Phub zam



Message No.: Enter your message number
 From: Shift In-charge, Control Room

Date: 11-Jan-18
 Time: 9:48

Forecast Generation & Load with Actual Generation & Load of Today from 00:00hrs to 09:00hrs(11-Jan-2018).



Yours faithfully Phub Zam



འབྲུག་རྒྱལ་ཁོག་གི་འགྲུལ་རྒྱུ་ལས་ཁུངས་ལ.ལ.
Bhutan Power Corporation Ltd.
Bhutan Power System Operator
Thimphu: Bhutan



Message No.: Enter your message number **Date:** 11-Jan-18
From: Shift In-charge, Control Room **Time:** 9:48

To
 Managing Director, BPC. Email: gemtshering@bpc.bt
 Director, O&MD, DGPC. Email: director.umd@drukgreen.com
 General Manager, TD, BPC. Email: ktobgye@bpc.bt
 Advisor, BPC. Email: bharattamang@bpc.bt

Sub: Load Generation Balance Report of Tomorrow (12-Jan-2018).

Hours (BST)	Forecast		Hours (BST)	Forecast	
	Generation	Load		Generation	Load
0:00	262.8	282.8	12:00	296.8	316.5
0:15	257.1	277.1	12:15	296	316
0:30	257.2	277.2	12:30	294.8	314.8
0:45	251.8	271.8	12:45	293.9	313.9
1:00	252.7	272.7	13:00	287.5	307.5
1:15	250	270	13:15	286.9	306.9
1:30	251.8	271.8	13:30	280.2	300.2
1:45	254.2	274.2	13:45	278.9	298.9
2:00	255	275	14:00	285.7	305.7
2:15	255.6	275.6	14:15	267.8	287.8
2:30	255.9	275.9	14:30	269.1	289.1
2:45	253.7	273.7	14:45	278.5	298.5
3:00	253.4	273.4	15:00	275.2	295.2
3:15	250.4	270.4	15:15	265.7	285.7
3:30	254.2	274.2	15:30	265.3	285.3
3:45	252.5	272.5	15:45	268.4	288.4
4:00	250.2	270.2	16:00	280.1	300.1
4:15	250.2	270.2	16:15	285.3	305.3
4:30	253.7	273.7	16:30	293.3	293.3
4:45	254.8	274.8	16:45	294.8	294.8
5:00	255.6	275.6	17:00	304.6	304.6
5:15	261.2	281.2	17:15	305.4	305.4
5:30	264.3	284.3	17:30	312.6	312.6
6:45	264.7	284.7	17:45	327.3	323.5
6:00	264.3	284.3	18:00	342.2	323.5
6:15	269	289	18:15	348.3	348.3
6:30	276	296	18:30	347.3	347.3
6:45	280.3	300.3	18:45	343.9	343.9
7:00	292.6	312.6	19:00	344.5	344.5
7:15	301.7	321.7	19:15	358.1	358.1
7:30	307.3	324.4	19:30	361.6	361.6
7:45	310.8	324.4	19:45	352.9	323.5
8:00	311.1	331.1	20:00	339.2	323.5
8:15	310.4	330.4	20:15	329.7	323.5
8:30	310	330	20:30	295.3	295.3
8:45	307.1	327.1	20:45	278	303
9:00	304.4	324.4	21:00	278	303
9:15	298.2	318.2	21:15	285.9	310.9
9:30	333.6	316.5	21:30	293.6	293.6
9:45	303.8	316.5	21:45	303.5	303.5
10:00	300.5	316.5	22:00	299.9	299.9
10:15	297.7	316.5	22:15	298.6	298.6
10:30	298.7	316.5	22:30	293.8	293.8
10:45	298	316.5	22:45	281.3	306.3
11:00	296	316	23:00	278.3	303.3
11:15	295.9	315.9	23:15	270.5	295.5
11:30	297.5	316.5	23:30	267.1	292.1
11:45	294.5	314.5	23:45	264.7	289.7

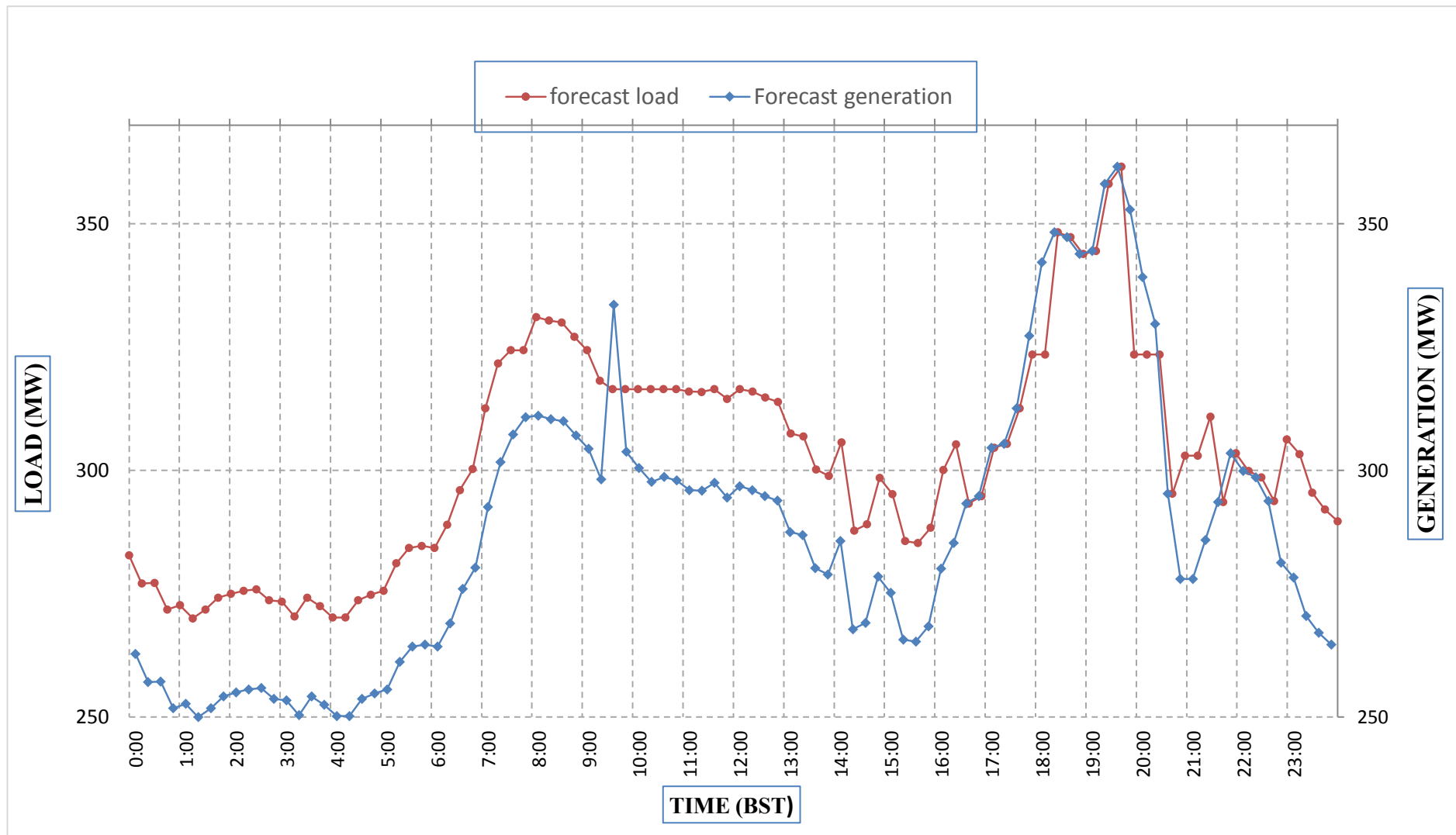
Yours faithfully,
 Phub Zam



Message No.: Enter your message number
 From: Shift In-charge, Control Room

Date: 11-Jan-18
 Time: 9:48

Forecast Generation & Load Forecast for Tomorrow (12-Jan-2018).



Yours faithfully,
 Phub zam

	MW
Scheduled Peak Generation(12-Jan-2018).	361.60
Forecast Peak Load(12-Jan-2018).	361.60



འབྲུག་གྲོག་ལེ་ལས་འཛིན།

Bhutan Power Corporation Ltd.
Bhutan Power System Operator
Thimphu: Bhutan



Message No.:

Enter your message number

Date: 11-Jan-18

From:

Shift In-charge, Control Room

Time: 9:48

To

Managing Director, BPC. Email: gemtshering@bpc.bt
Director, O&MD, DGPC. Email: director.omb@drukgreen.com
General Manager, TD, BPC. Email: ktobgye@bpc.bt
Advisor, BPC. Email: bharattamang@bpc.bt

Sub:

Forecast Generation and Actual Generation of Dagachhu (10-Jan-2018).

Hours (BST)	Actual Frequency	Forecast Generation	Actual Generation	Hours (BST)	Actual Frequency	Forecast Generation	Actual Generation
0:00	50.04	23.00	22.52	12:00	49.94	23.00	23.24
0:15	49.94	23.00	22.54	12:15	49.98	23.00	23.02
0:30	49.99	23.00	22.51	12:30	50.03	23.00	23.03
0:45	49.99	23.00	22.56	12:45	50.01	23.00	22.85
1:00	49.95	23.00	22.55	13:00	50.02	23.00	22.66
1:15	50.00	23.00	22.53	13:15	50.06	23.00	22.89
1:30	50.01	23.00	22.56	13:30	50.01	23.00	22.84
1:45	49.96	23.00	22.55	13:45	50.00	23.00	23.04
2:00	49.98	23.00	22.53	14:00	50.02	23.00	23.04
2:15	49.98	23.00	22.54	14:15	50.04	23.00	23.01
2:30	49.96	23.00	22.51	14:30	49.98	23.00	23.02
2:45	50.00	23.00	22.53	14:45	49.99	23.00	23.01
3:00	50.00	23.00	22.56	15:00	50.02	23.00	23.02
3:15	50.00	23.00	22.54	15:15	49.99	23.00	23.03
3:30	50.01	23.00	22.51	15:30	49.95	23.00	23.01
3:45	49.99	23.00	22.52	15:45	49.97	23.00	23.01
4:00	49.98	23.00	22.55	16:00	50.00	23.00	23.01
4:15	49.93	23.00	22.53	16:15	50.05	23.00	23.06
4:30	49.99	23.00	22.53	16:30	49.96	23.00	23.02
4:45	50.05	23.00	22.54	16:45	49.94	23.00	23.02
5:00	50.03	23.00	22.52	17:00	49.99	23.00	23.01
5:15	49.98	23.00	22.53	17:15	50.02	23.00	23.04
5:30	49.97	23.00	22.55	17:30	49.98	23.00	23.02
6:45	49.97	23.00	22.54	17:45	49.98	23.00	22.99
6:00	50.03	23.00	22.55	18:00	50.00	23.00	23.02
6:15	50.00	23.00	22.55	18:15	49.92	23.00	23.00
6:30	49.98	23.00	23.00	18:30	49.92	23.00	23.02
6:45	49.93	23.00	23.00	18:45	49.98	23.00	23.01
7:00	49.93	23.00	22.99	19:00	50.01	23.00	23.01
7:15	49.93	23.00	23.18	19:15	50.01	23.00	23.02
7:30	49.90	23.00	23.18	19:30	50.00	23.00	23.02
7:45	49.85	23.00	23.20	19:45	50.01	23.00	23.02
8:00	49.96	23.00	23.18	20:00	50.04	23.00	23.03
8:15	49.98	23.00	23.18	20:15	50.01	23.00	23.01
8:30	49.88	23.00	23.43	20:30	49.99	23.00	23.00
8:45	50.00	23.00	23.44	20:45	49.93	23.00	23.02
9:00	50.02	23.00	23.43	21:00	49.99	23.00	23.00
9:15	49.94	23.00	23.41	21:15	49.94	23.00	23.03
9:30	49.97	23.00	23.42	21:30	49.98	23.00	23.02
9:45	50.03	23.00	23.43	21:45	50.01	23.00	22.82
10:00	50.04	23.00	23.42	22:00	50.05	23.00	22.82
10:15	50.01	23.00	23.43	22:15	49.98	23.00	22.52
10:30	49.93	23.00	23.45	22:30	49.97	23.00	22.52
10:45	49.97	23.00	23.45	22:45	49.98	23.00	22.53
11:00	50.02	23.00	23.25	23:00	50.03	23.00	22.52
11:15	50.00	23.00	23.26	23:15	50.00	23.00	22.52
11:30	49.95	23.00	23.23	23:30	49.99	23.00	22.54
11:45	49.96	23.00	23.24	23:45	50.04	23.00	22.54

Note: Some data obtained from SCADA are missing

Yours faithfully,

Phub Zam



འབྲུག་གྲོག་ཚེ་ལས་འཛིན།

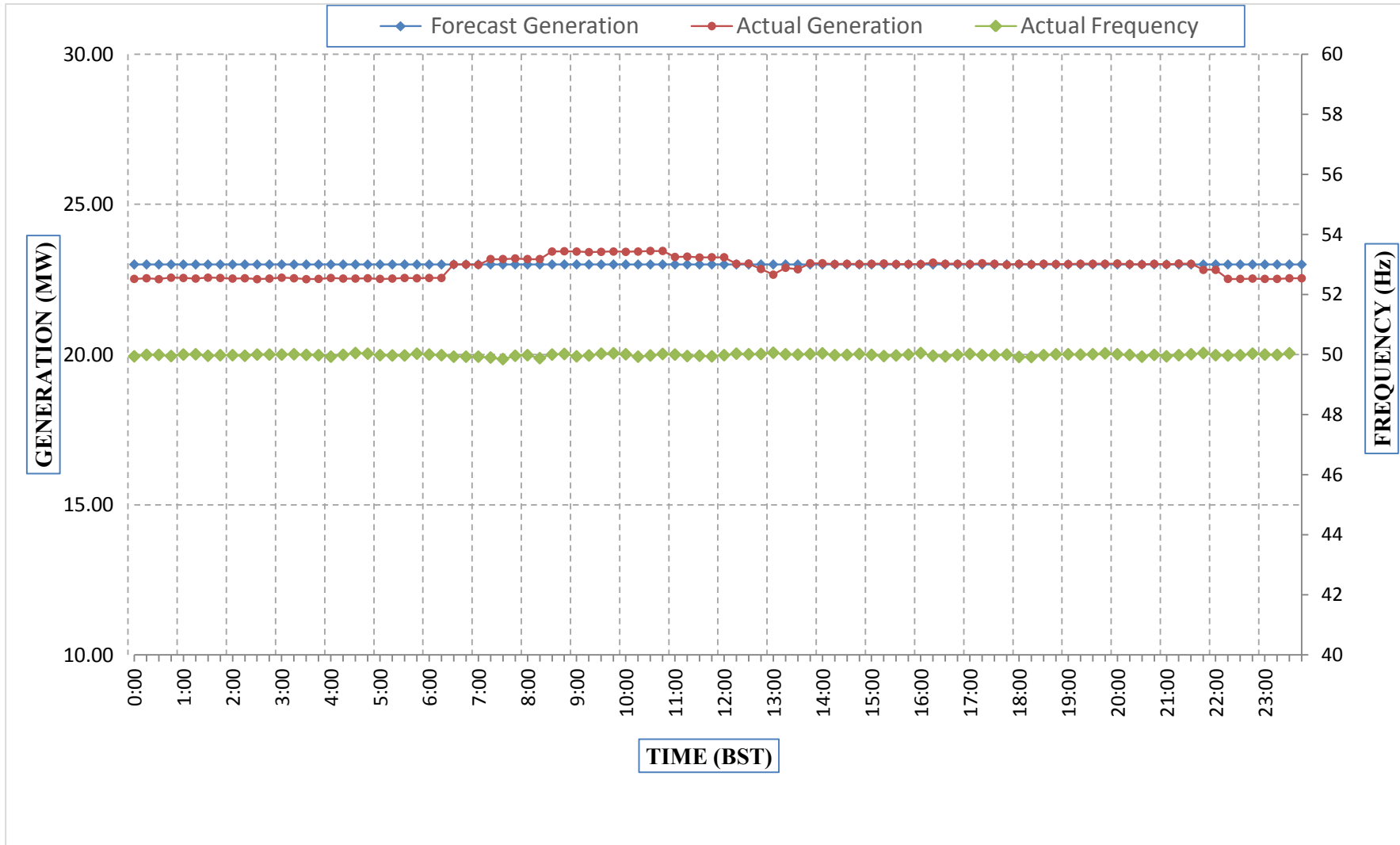
Bhutan Power Corporation Ltd.
Bhutan Power System Operator
Thimphu: Bhutan



Message No.: Enter your message number
From: Shift In-charge, Control Room

Date: 11-Jan-18
Time: 9:48

Forecast Generation & Actual Generation of Dagachhu(10-Jan-2018).



Yours faithfully,
Phub Zam