



འབྲུག་གླིང་མེ་ལམ་འཛིན།

Bhutan Power Corporation Ltd.
Bhutan Power System Operator
Thimphu: Bhutan



Message No.: Enter your message number
From: Shift In-charge, Control Room

Date: 10-Jan-18
Time: 17:39

To
Managing Director, BPC. Email: gemtshering@bpc.bt
Director, O&MD, DGPC. Email: director.umd@drukgreen.com
General Manager, TD, BPC. Email: ktobgye@bpc.bt
General Manager, DCSD, BPC. Email: sandeeprai@bpc.bt

Sub: **Load Generation Balance Report of Yesterday (09-Jan-2018).**

Hours (BST)	Forecast		Actual		Hours (BST)	Forecast		Actual	
	Generation	Load	Generation	Load		Generation	Load	Generation	Load
0:00	301.00	267.00			12:00	301.00	293.10	318.28	300.19
0:15	301.00	264.60	356.96	264.91	12:15	301.00	292.60	320.13	303.47
0:30	301.00	260.90	357.91	265.14	12:30	301.00	291.30	318.17	300.80
0:45	301.00	256.50	357.88	257.80	12:45	301.00	286.40	320.97	295.63
1:00	301.00	253.90	357.94	266.39	13:00	301.00	280.10	319.44	290.15
1:15	301.00	251.50	357.94	264.47	13:15	301.00	282.00	319.70	294.94
1:30	301.00	251.50	326.69	264.44	13:30	301.00	283.50	319.41	294.63
1:45	301.00	252.00	326.25	261.60	13:45	301.00	276.30	322.80	289.08
2:00	301.00	251.30	325.60	270.84	14:00	301.00	284.10		
2:15	301.00	253.00	327.16	270.88	14:15	301.00	282.50	320.39	276.02
2:30	301.00	253.20	327.32	267.97	14:30	301.00	282.30	322.02	273.89
2:45	301.00	252.00	327.55	264.21	14:45	301.00	277.10	321.62	269.84
3:00	301.00	253.10	326.28	256.52	15:00	301.00	273.80	321.52	270.27
3:15	301.00	250.00	327.46	255.48	15:15	301.00	272.90	258.39	206.04
3:30	301.00	251.50			15:30	301.00	271.70	259.59	197.61
3:45	301.00	250.30	327.37	257.35	15:45	301.00	276.90	257.60	200.22
4:00	301.00	248.30	327.46	253.66	16:00	301.00	278.20	257.52	274.41
4:15	301.00	246.50	327.36	256.55	16:15	301.00	278.50	278.95	283.40
4:30	301.00	252.30	325.45	254.30	16:30	301.00	287.60	261.58	286.20
4:45	301.00	254.30	325.15	257.77	16:45	301.00	289.70	295.09	299.55
5:00	301.00	257.60	322.65	258.71	17:00	301.00	294.90	294.25	289.64
5:15	301.00	261.00	323.47	251.23	17:15	315.80	297.50		
5:30	301.00	262.50	324.92	249.64	17:30	315.80	305.90		
5:45	301.00	263.20	323.29	266.27	17:45	315.80	315.50	297.27	301.75
6:00	301.00	261.70	324.30	264.52	18:00	315.80	337.90	298.89	321.95
6:15	315.80	266.00	324.48	273.77	18:15	315.80	344.10	298.55	332.48
6:30	315.80	274.40	335.13	283.31	18:30	315.80	342.60	297.34	339.63
6:45	315.80	276.00	336.16	292.90	18:45	315.80	338.40	296.21	339.30
7:00	315.80	287.50			19:00	315.80	341.90	296.89	344.77
7:15	315.80	295.40	337.76	301.04	19:15	315.80	357.30	294.33	339.42
7:30	315.80	300.70	337.27	307.27	19:30	315.80	359.80	292.46	330.53
7:45	315.80	303.40	336.88	316.70	19:45	315.80	350.70	336.59	342.29
8:00	315.80	304.70	337.73	315.05	20:00	315.80	346.80	335.77	335.45
8:15	315.80	303.20	337.66	315.84	20:15	315.80	342.70	335.13	331.69
8:30	315.80	306.20	337.73	318.25	20:30	315.80	316.90	336.02	327.30
8:45	315.80	304.60	326.77	313.91	20:45	315.80	280.30	336.95	320.59
9:00	315.80	298.50	327.20	302.15	21:00	315.80	269.80		
9:15	301.00	250.50	325.40	301.45	21:15	315.80	267.40	339.09	320.91
9:30	301.00	313.30	312.42	301.30	21:30	315.80	268.00	348.77	314.77
9:45	301.00	296.20	313.20	306.56	21:45	315.80	268.80	349.95	310.86
10:00	301.00	292.60	312.20	308.85	22:00	315.80	266.40	349.45	311.70
10:15	301.00	294.70	314.37	307.07	22:15	301.00	289.50	350.36	293.56
10:30	301.00	294.00			22:30	301.00	290.90	333.45	291.90
10:45	301.00	291.90	313.73	304.91	22:45	301.00	286.40	327.95	288.86
11:00	301.00	291.90	312.71	303.89	23:00	301.00	284.60	332.77	284.65
11:15	301.00	291.00	312.79	301.37	23:15	301.00	275.50	332.58	271.31
11:30	301.00	292.10	314.11	302.30	23:30	301.00	270.40	331.05	266.52
11:45	301.00	291.50	316.26	297.45	23:45	301.00	268.20	329.54	258.43

Note: Some data obtained from SCADA are missing

Yours faithfully
Phub Zam

Coincidental peak load of Day(Last year):	
262.74	10-Jan-17
Maximum Load till date:	
362.09	14-Nov-17



འབྲུག་རྒྱལ་ཁོ་ལས་འཛིན།

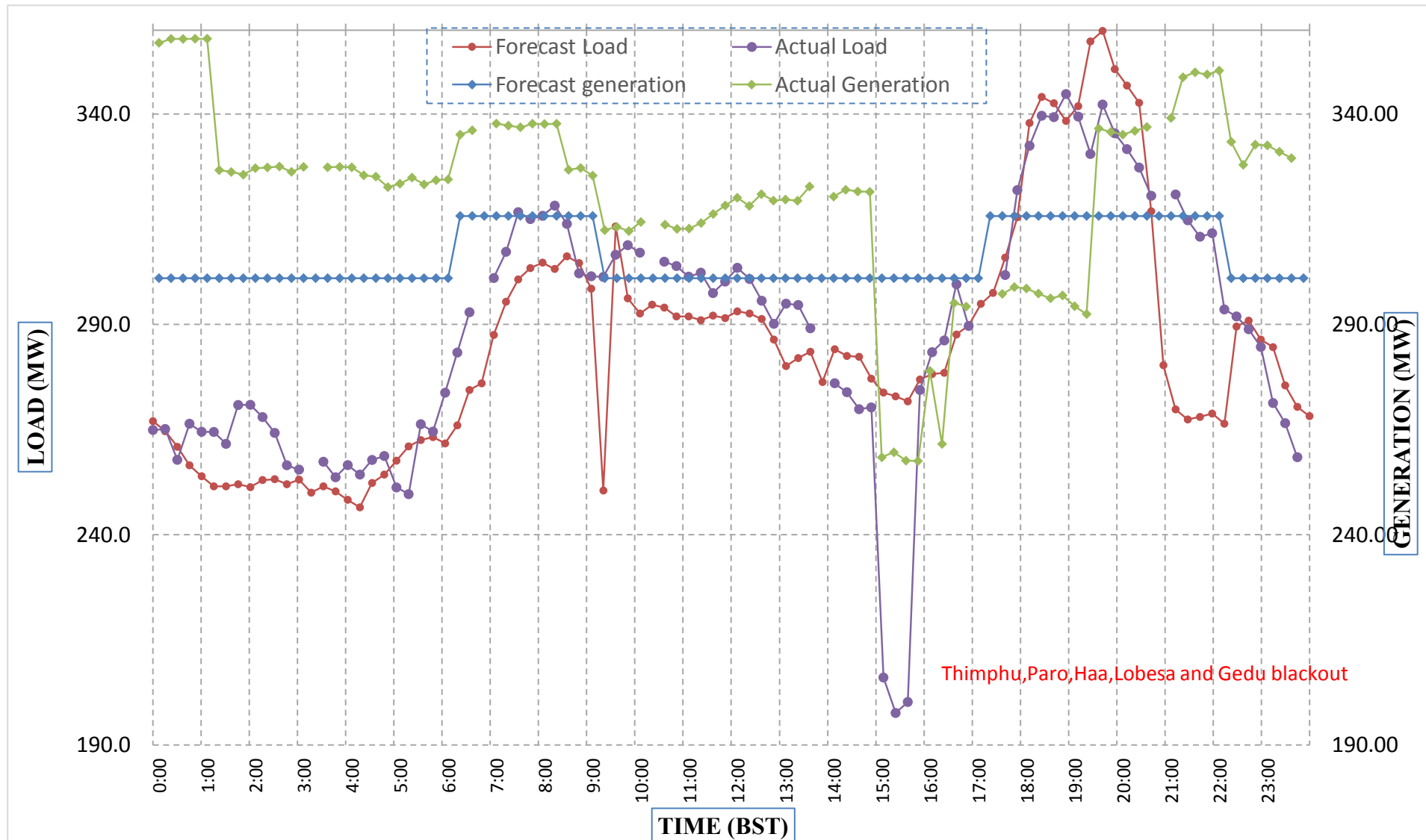
Bhutan Power Corporation Ltd.
 Bhutan Power System Operator
 Thimphu: Bhutan



Message No.: Enter your message number
 From: Shift In-charge, Control Room

Date: 10-Jan-18
 Time: 17:39

Forecast Generation & Load with Actual Generation & Load (09-Jan-2018).



Thimphu, Paro, Haa, Lobesa and Gedu blackout

Yours faithfully,
 Phub Zam

	MW	Coincidental peak load of Day(Last year):	
Peak Co-incident Generation(09-Jan-2018).	357.94	262.74	10-Jan-17
Peak Co-incident Load(09-Jan-2018).	344.77		
		Maximum Load till date:	
		362.09	14-Nov-17

Telephone: +975-02335631; Fax: +975-02335632; Email: bhutansystemoperator@bpc.bt; www.bpc.bt



འབྲུག་གྲོག་མེ་ལས་འཛིན།

Bhutan Power Corporation Ltd.
Bhutan Power System Operator
Thimphu: Bhutan



Message No.: Enter your message number
From: Shift In-charge, Control Room

Date: 10-Jan-18
Time: 17:39

To
Managing Director, BPC. Email: gemtshering@bpc.bt
Director, O&MD, DGPC. Email: director.umd@drukgreen.com
General Manager, TD, BPC. Email: thinleygyeltshen@bpc.bt
General Manager, DCSD, BPC. Email: sandeeprai@bpc.bt

Sub: Load Generation Balance Report of Today (10-Jan-2018).

Hours (BST)	Forecast		Actual	
	Generation	Load	Generation	Load
0:00	299.60	265.10		
0:15	299.60	258.00	330.70	259.05
0:30	299.60	256.10	340.89	256.27
0:45	299.60	252.80	339.09	254.81
1:00	299.60	253.90	339.03	244.43
1:15	299.60	248.70	339.00	238.15
1:30	299.60	251.00	338.89	245.02
1:45	299.60	253.00	339.64	248.74
2:00	299.60	252.80	339.07	248.42
2:15	299.60	253.80	338.40	249.72
2:30	299.60	253.90	332.91	252.29
2:45	299.60	251.40	331.96	252.98
3:00	299.60	252.90	332.24	253.65
3:15	299.60	251.00	332.43	250.62
3:30	299.60	253.40		
3:45	299.60	252.00	332.50	251.70
4:00	299.60	250.10	332.76	250.42
4:15	299.60	249.40	332.93	253.55
4:30	299.60	253.60	333.08	250.30
4:45	299.60	255.70	333.52	246.32
5:00	299.60	258.90	333.57	253.98
5:15	299.60	262.90	332.80	260.30
5:30	299.60	264.20	333.13	260.03
5:45	299.60	263.30	332.52	259.31
6:00	299.60	265.00	332.50	265.38
6:15	314.10	267.80	331.83	265.44
6:30	314.10	275.60	344.97	265.76
6:45	314.10	277.40	345.38	277.83
7:00	314.10	290.40		
7:15	314.10	300.10	345.48	283.36
7:30	314.10	305.50	346.20	294.97
7:45	314.10	308.30	347.48	303.77
8:00	314.10	308.20	346.23	312.13
8:15	314.10	308.40	346.54	313.02
8:30	314.10	309.90	344.08	309.41
8:45	314.10	309.00	344.21	307.32
9:00	314.10	304.30	336.74	305.34

Note: Some data obtained from SCADA are missing

Yours faithfully,
Phub Zam

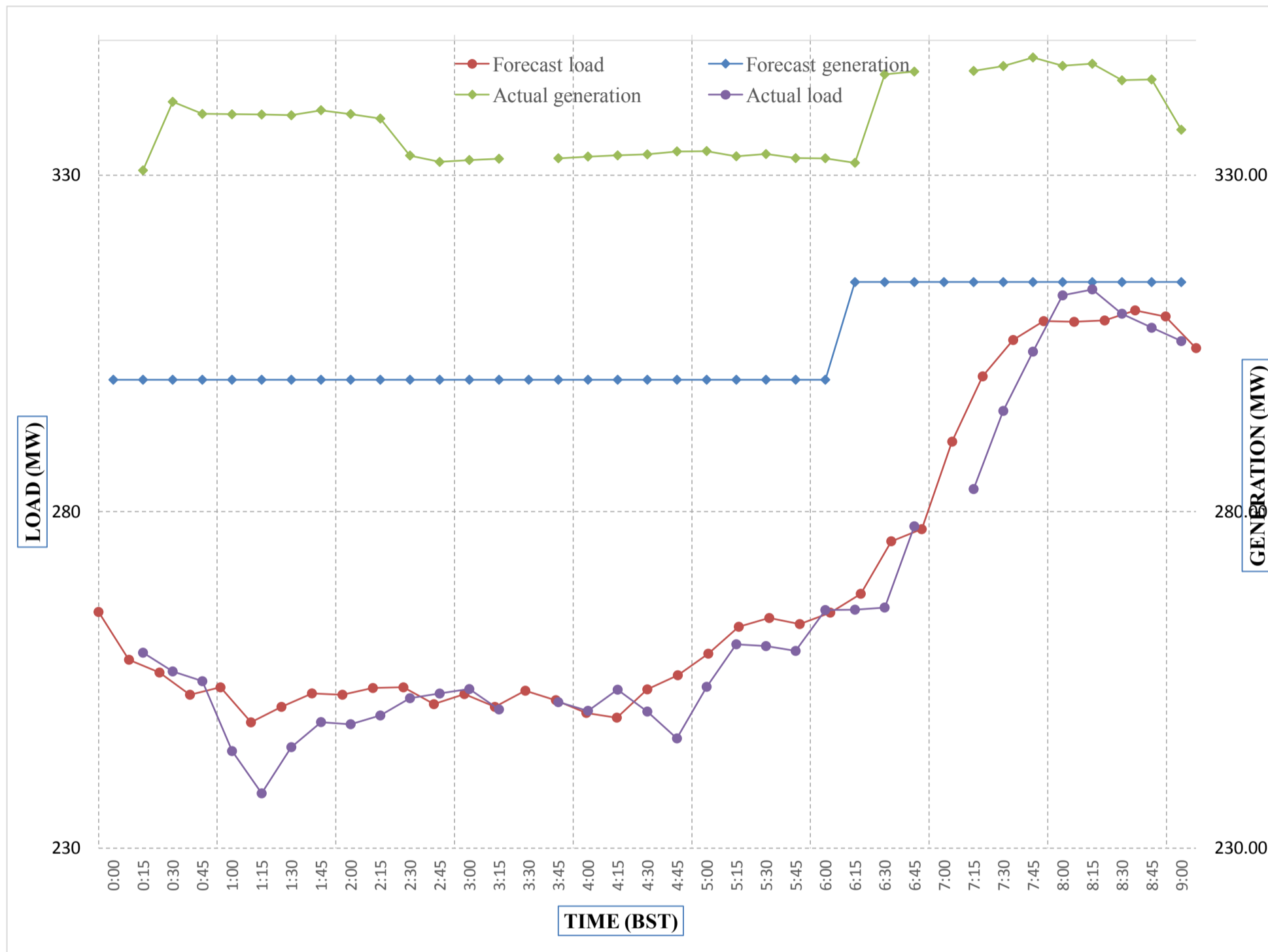
Coincidental peak load of Day(Last year):	
269.83	10-Jan-18
Maximum Load till date:	
362.09	14-Nov-17



Message No.: Enter your message number
 From: Shift In-charge, Control Room

Date: 10-Jan-18
 Time: 17:39

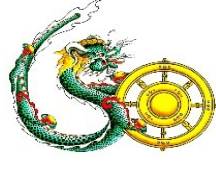
Forecast Generation & Load with Actual Generation & Load of Today from 00:00hrs to 09:00hrs(10-Jan-2018).



Yours faithfully
 Phub Zam



ཕུག་ལུ་བྱུང་བའི་ལོ་ལོ་མཚན་ལོ་ལོ་
Bhutan Power Corporation Ltd.
Bhutan Power System Operator
 Thimphu: Bhutan



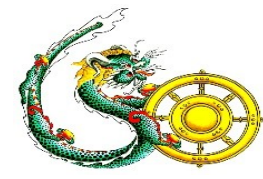
Message No.: Enter your message number **Date:** 10-Jan-18
From: Shift In-charge, Control Room **Time:** 17:39

To
 Managing Director, BPC. Email: gemtsheing@bpc.bt
 Director, O&MD, DGPC. Email: director.umd@drukgreen.com
 General Manager, TD, BPC. Email: ktobgye@bpc.bt
 Advisor, BPC. Email: bharattamang@bpc.bt

Sub: Load Generation Balance Report of Tomorrow (11-Jan-2018).

Hours (BST)	Forecast		Hours (BST)	Forecast	
	Generation	Load		Generation	Load
0:00	285.00	265.00	12:00	316.20	296.20
0:15	279.70	259.70	12:15	315.10	295.10
0:30	278.80	258.80	12:30	315.10	295.10
0:45	274.30	254.30	12:45	313.10	293.10
1:00	277.40	257.40	13:00	307.50	287.50
1:15	271.90	251.90	13:15	306.50	286.50
1:30	273.00	253.00	13:30	306.50	286.50
1:45	276.40	256.40	13:45	300.80	280.80
2:00	277.40	257.40	14:00	306.80	286.80
2:15	277.50	257.50	14:15	303.80	283.80
2:30	277.20	257.20	14:30	304.50	284.50
2:45	274.40	254.40	14:45	299.90	279.90
3:00	273.70	253.70	15:00	295.60	275.60
3:15	272.00	252.00	15:15	282.30	262.30
3:30	275.60	255.60	15:30	280.20	260.20
3:45	272.70	252.70	15:45	283.20	263.20
4:00	269.70	249.70	16:00	298.20	278.20
4:15	269.80	249.80	16:15	304.30	284.30
4:30	274.20	254.20	16:30	312.00	292.00
4:45	275.70	255.70	16:45	313.30	293.30
5:00	274.90	254.90	17:00	322.40	302.40
5:15	281.60	261.60	17:15	322.20	302.20
5:30	285.60	265.60	17:30	333.60	313.60
6:45	285.30	265.30	17:45	344.80	324.80
6:00	285.00	265.00	18:00	361.50	341.50
6:15	289.20	269.20	18:15	368.60	348.60
6:30	299.00	279.00	18:30	367.30	347.30
6:45	300.10	280.10	18:45	363.70	343.70
7:00	314.90	294.90	19:00	368.10	348.10
7:15	323.10	303.10	19:15	384.20	364.20
7:30	327.50	307.50	19:30	389.30	369.30
7:45	330.00	310.00	19:45	380.10	360.10
8:00	330.50	310.50	20:00	364.00	344.00
8:15	330.60	310.60	20:15	347.80	327.80
8:30	330.90	310.90	20:30	309.90	289.90
8:45	327.40	307.40	20:45	290.10	270.10
9:00	324.70	304.70	21:00	295.60	275.60
9:15	316.30	296.30	21:15	302.80	282.80
9:30	353.90	333.90	21:30	313.30	293.30
9:45	322.60	302.60	21:45	324.90	304.90
10:00	320.10	300.10	22:00	316.20	296.20
10:15	319.20	299.20	22:15	321.30	301.30
10:30	317.50	297.50	22:30	315.50	295.50
10:45	316.50	296.50	22:45	303.70	283.70
11:00	314.20	294.20	23:00	302.40	282.40
11:15	316.20	296.20	23:15	295.20	275.20
11:30	315.30	295.30	23:30	291.20	271.20
11:45	312.20	292.20	23:45	312.20	292.20

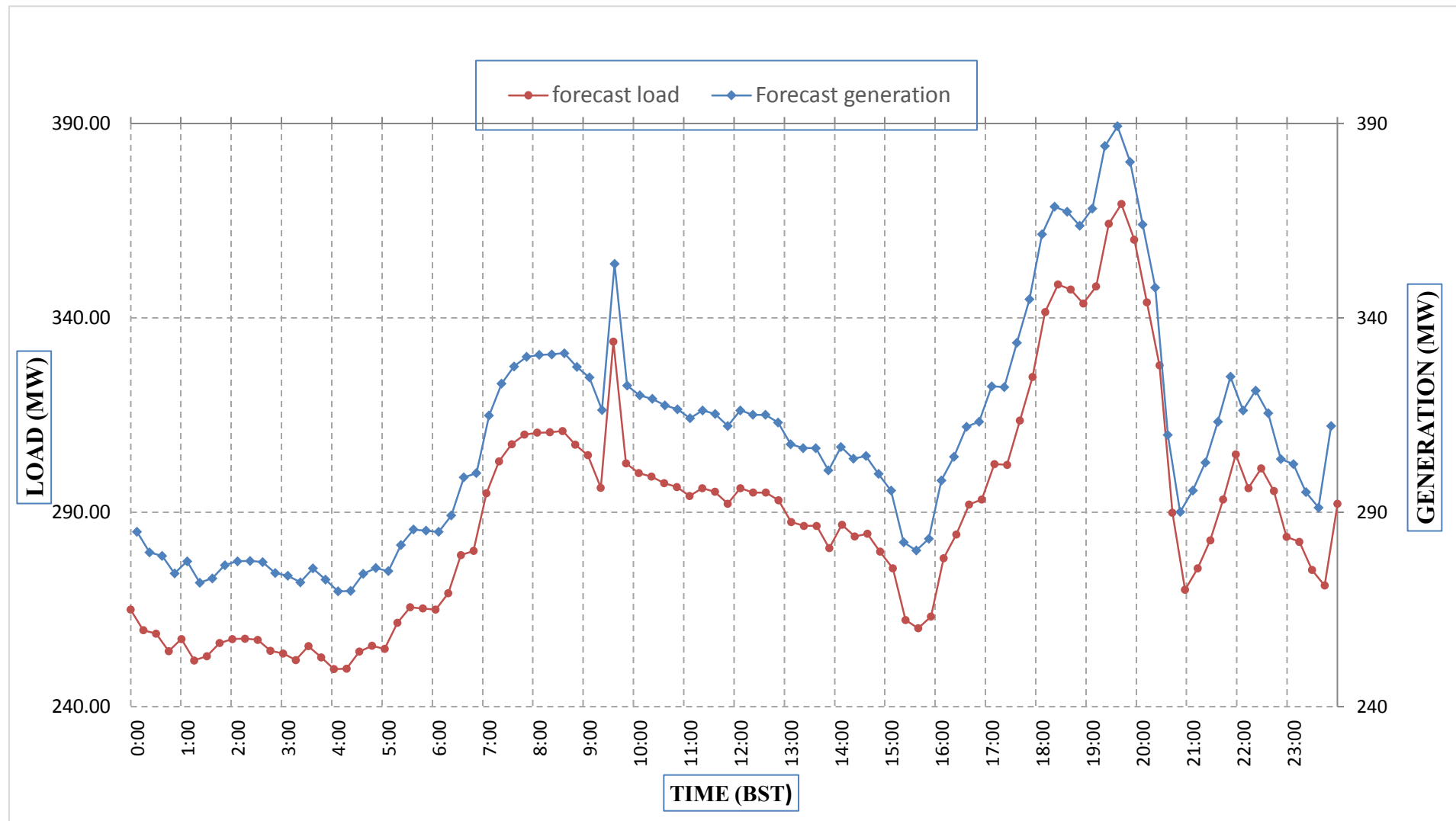
Yours faithfully,
 Phub Zam



Message No.: Enter your message number
From: Shift In-charge, Control Room

Date: 10-Jan-18
Time: 17:39

Forecast Generation & Load Forecast for Tomorrow (11-Jan-2018).



Yours faithfully,
 Phub Zam

	MW
Scheduled Peak Generation(11-Jan-2018).	389.30
Forecast Peak Load(11-Jan-2018).	369.30



འབྲུག་གྲོག་མེ་ལམ་འཛིན།
Bhutan Power Corporation Ltd.
Bhutan Power System Operator
Thimphu: Bhutan



Message No.: Enter your message number **Date:** 10-Jan-18
From: Shift In-charge, Control Room **Time:** 17:39

To
 Managing Director, BPC. Email: gemtshering@bpc.bt
 Director, O&MD, DGPC. Email: director.omid@drukgreen.com
 General Manager, TD, BPC. Email: ktobgye@bpc.bt
 Advisor, BPC. Email: bharattamang@bpc.bt

Sub: Forecast Generation and Actual Generation of Dagachhu (09-Jan-2018).

Hours (BST)	Actual Frequency	Forecast Generation	Actual Generation	Hours (BST)	Actual Frequency	Forecast Generation	Actual Generation
0:00		23.50		12:00		23.50	23.03
0:15		23.50	22.84	12:15		23.50	23.02
0:30		23.50	22.82	12:30		23.50	23.05
0:45		23.50	22.83	12:45		23.50	23.05
1:00		23.50	22.84	13:00		23.50	23.03
1:15		23.50	22.83	13:15		23.50	23.03
1:30		23.50	22.83	13:30		23.50	23.03
1:45		23.50	22.85	13:45		23.50	23.05
2:00		23.50	22.82	14:00		23.50	
2:15		23.50	22.83	14:15		23.50	20.03
2:30		23.50	22.83	14:30		23.50	23.04
2:45		23.50	22.84	14:45		23.50	23.07
3:00		23.50	22.83	15:00		23.50	23.04
3:15		23.50	23.02	15:15		23.50	23.05
3:30		23.50		15:30		23.50	23.03
3:45		23.50	23.00	15:45		23.50	23.03
4:00		23.50	23.00	16:00		23.50	23.02
4:15		23.50	23.01	16:15		23.50	23.04
4:30		23.50	23.01	16:30		23.50	23.03
4:45		23.50	23.01	16:45		23.50	23.02
5:00		23.50	23.00	17:00		23.50	23.03
5:15		23.50	23.00	17:15		23.50	23.02
5:30		23.50	23.00	17:30		23.50	
6:45		23.50	23.01	17:45		23.50	22.87
6:00		23.50	23.02	18:00		23.50	22.85
6:15		23.50	23.01	18:15		23.50	22.86
6:30		23.50	23.01	18:30		23.50	22.55
6:45		23.50	22.99	18:45		23.50	22.53
7:00		23.50		19:00		23.50	22.54
7:15		23.50	23.01	19:15		23.50	22.54
7:30		23.50	23.01	19:30		23.50	22.53
7:45		23.50	23.00	19:45		23.50	22.54
8:00		23.50	23.00	20:00		23.50	22.53
8:15		23.50	23.51	20:15		23.50	22.53
8:30		23.50	23.49	20:30		23.50	22.53
8:45		23.50	23.51	20:45		23.50	22.54
9:00		23.50	23.52	21:00		23.50	
9:15		23.50	23.04	21:15		23.50	22.53
9:30		23.50	23.03	21:30		23.50	22.52
9:45		23.50	23.03	21:45		23.50	22.55
10:00		23.50	23.04	22:00		23.50	22.52
10:15		23.50	23.06	22:15		23.50	22.54
10:30		23.50		22:30		23.50	22.54
10:45		23.50	23.04	22:45		23.50	18.00
11:00		23.50	23.04	23:00		23.50	23.03
11:15		23.50	23.04	23:15		23.50	22.52
11:30		23.50	23.03	23:30		23.50	22.54
11:45		23.50	23.03	23:45		23.50	22.55

Note: Some data obtained from SCADA are missing

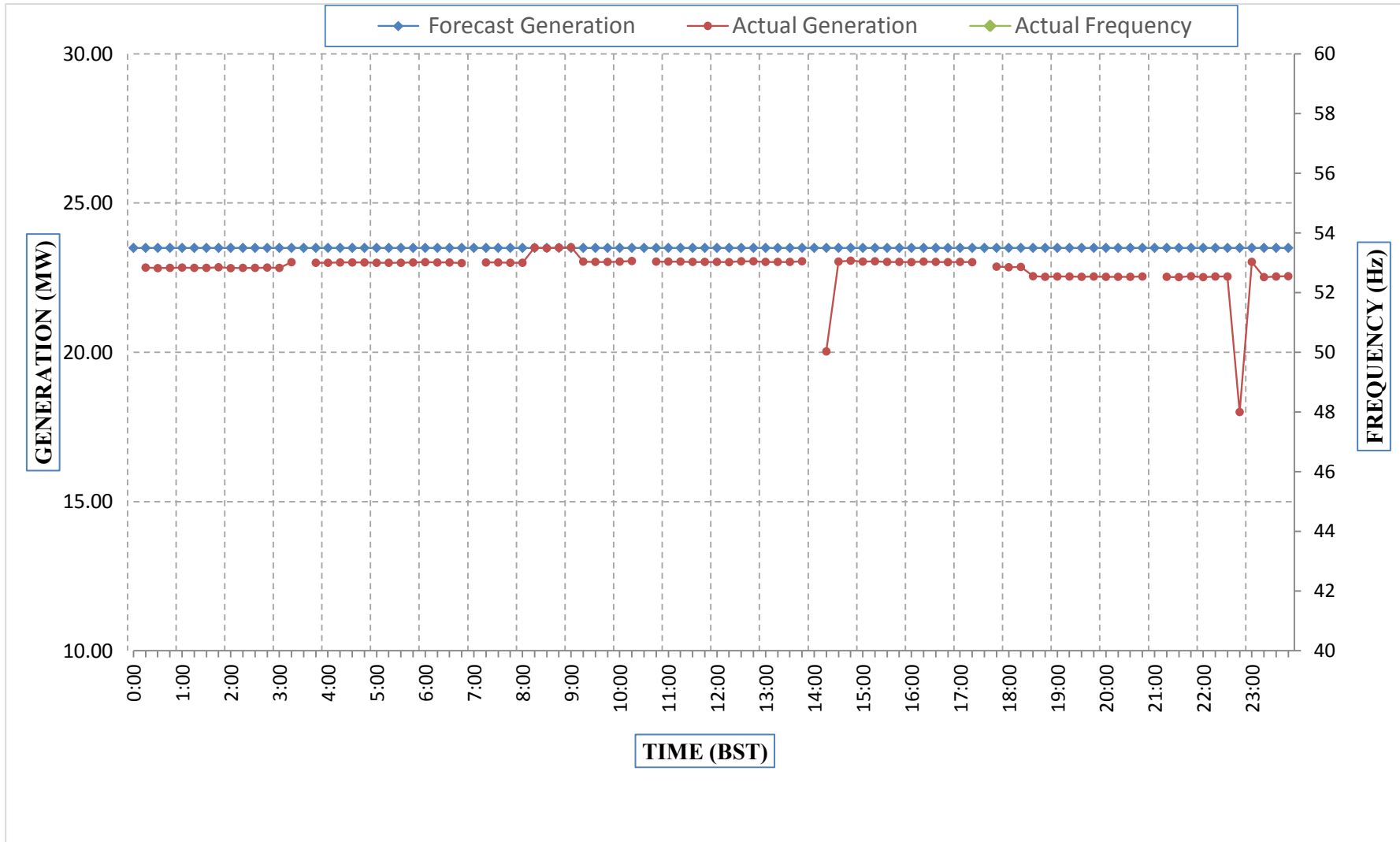
Yours faithfully,
 Phub Zam



Message No.: Enter your message number
 From: Shift In-charge, Control Room

Date: 10-Jan-18
 Time: 17:39

Forecast Generation & Actual Generation of Dagachhu(09-Jan-2018).



Yours faithfully,
 Phub Zam